

V&V Reference Report

L2 ASCDS Version : 10.4.3.1

Observation 18090 - L2 Version 1
Chandra X-Ray Center

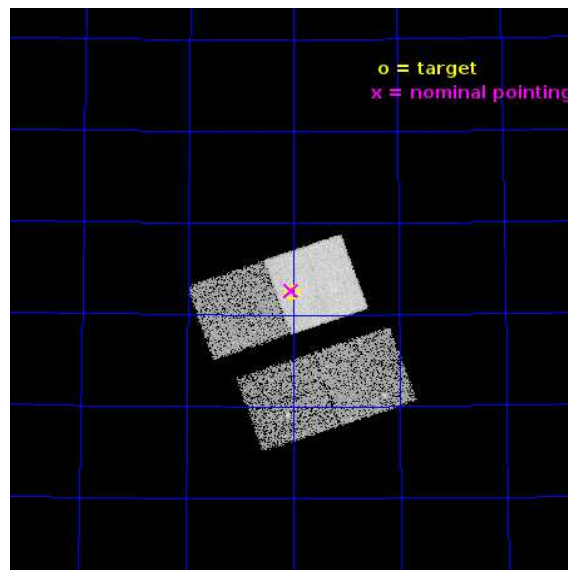
L2 Processing Date : Mar 16 2016

Contents

1	Front	2
2	OBI	3
2.1	OBI	3
2.1.1	Images	3
2.1.2	Bias	3
2.1.3	Parameters	4
2.1.4	Events	4
2.2	Compared Parameters	5
2.3	Aspect	6
2.4	Star Slots	9
2.4.1	Slot 3	9
2.4.2	Slot 4	10
2.4.3	Slot 5	11
2.4.4	Slot 6	12
2.4.5	Slot 7	13
2.5	FID Slots	14
2.5.1	Slot 0	14
2.5.2	Slot 1	15
2.5.3	Slot 2	16
A	Summary	17
A.1	Status	17
A.2	Comments	17

1 Front

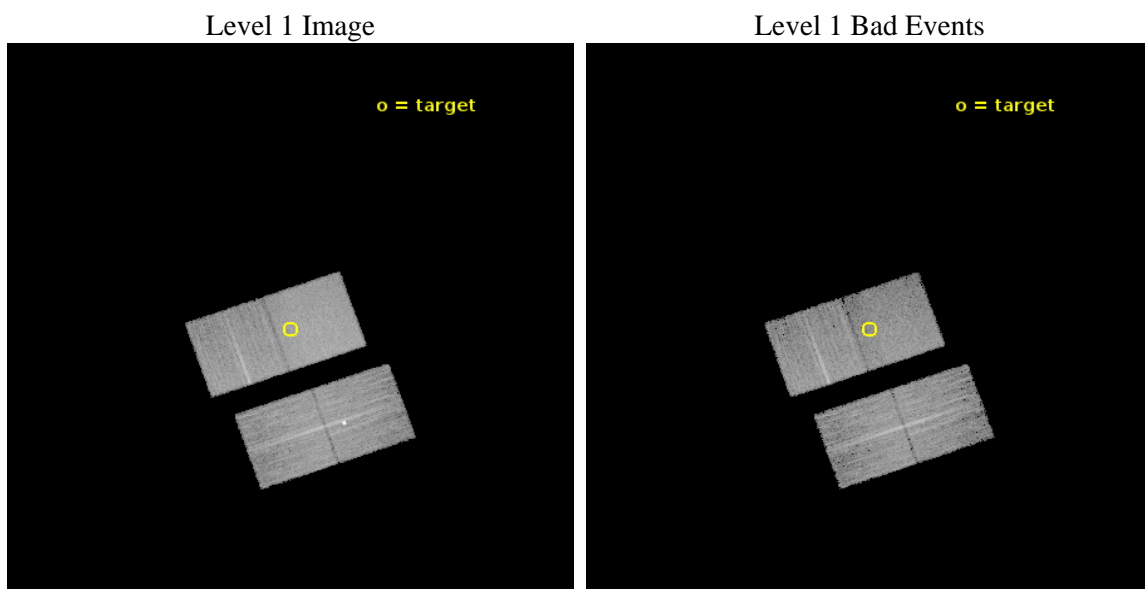
seq_num	703156	Sequence number
obs_id	18090	Observation id
title	Extending the Extragalactic 3CR Chandra Survey to z=1.5	Proposal t
observer	Francesco Massaro	Principal investigator
object	3CR 27	Source name
dtcycle	0	
cycle	P	events from which exps? Prim/Second/Both
ra_targ	14.004583	Observer's specified target RA [deg]
dec_targ	68.375111	Observer's specified target Dec [deg]
ra_nom	14.0091111106614	Nominal RA [deg]
dec_nom	68.377272632284	Nominal Dec [deg]
roll_nom	340.68472922801	Nominal Roll [deg]
revision	1	Processing version of data
ontime	12070.427639008	Sum of GTIs [s]
livetime	11912.718615784	Livetime [s]
ontime2	12070.304519057	Sum of GTIs [s]
ontime3	12070.345559001	Sum of GTIs [s]
ontime6	12070.386599064	Sum of GTIs [s]
ontime7	12070.427639008	Sum of GTIs [s]
l2events	60892	Number of level 2 events



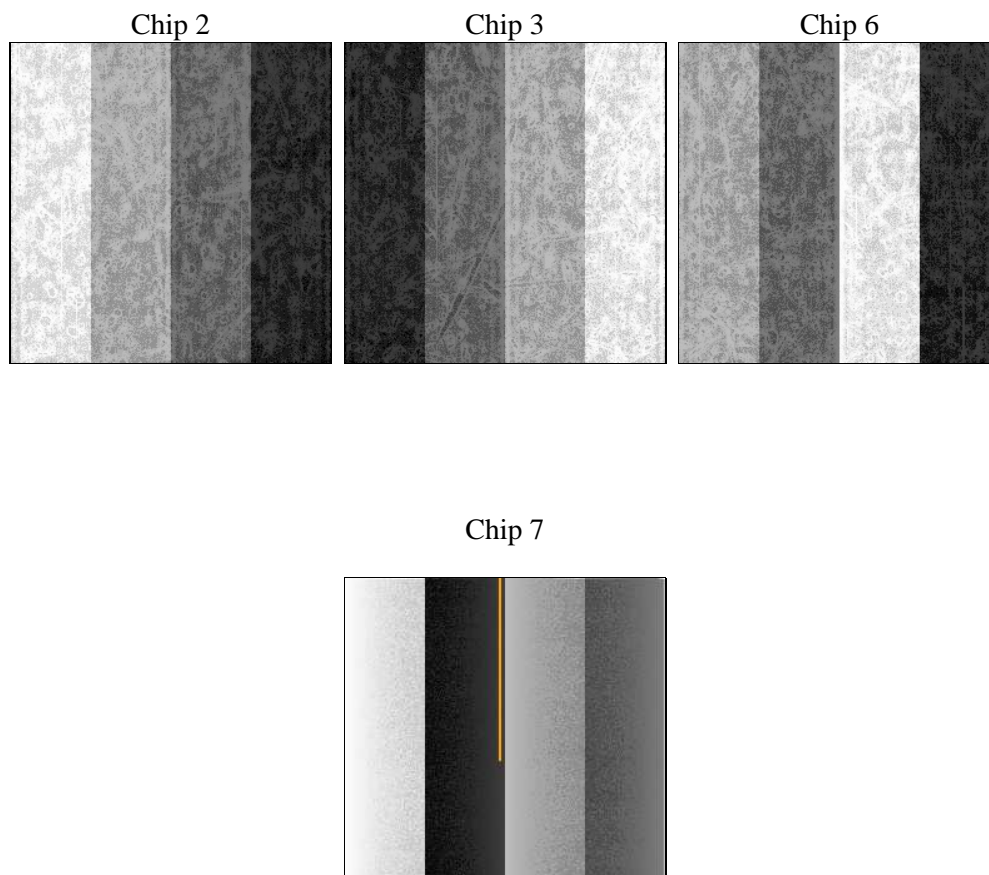
2 OBI

2.1 OBI

2.1.1 Images



2.1.2 Bias



2.1.3 Parameters

obi_num	0	Obi number	sched_exp_time	12000.000000	[s] Scheduled observation exposure time
ascdsver	10.4.3.1	Processing system revision	ontime	12070.427639008	Sum of GTIs [s]
caldbver	4.7.0	 	ontime2	12070.304519057	Sum of GTIs [s]
date	2016-03-16T04:44:13	Date and time of file creation	ontime3	12070.345559001	Sum of GTIs [s]
revision	1	Processing version of data	ontime6	12070.386599064	Sum of GTIs [s]
			ontime7	12070.427639008	Sum of GTIs [s]
			l1events	316212	Number of level 1 events

2.1.4 Events

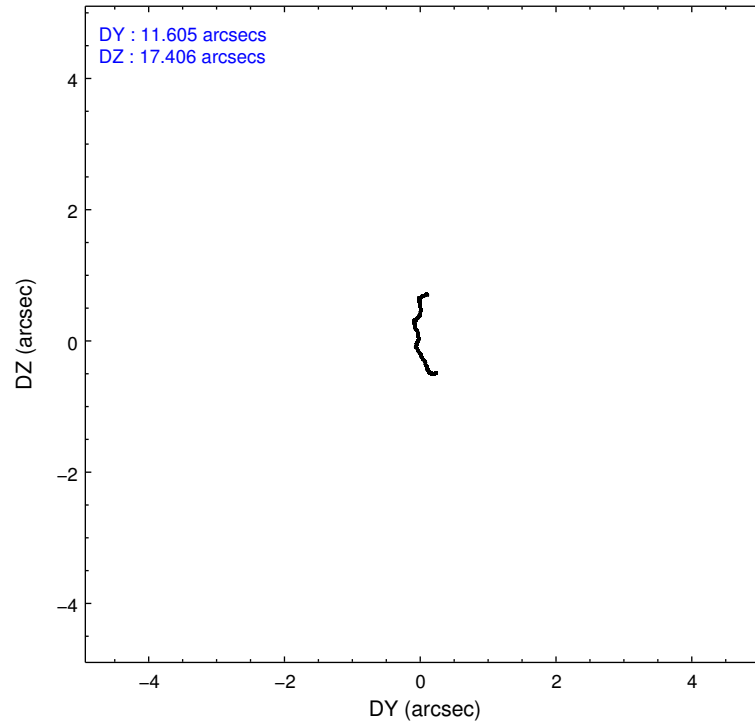
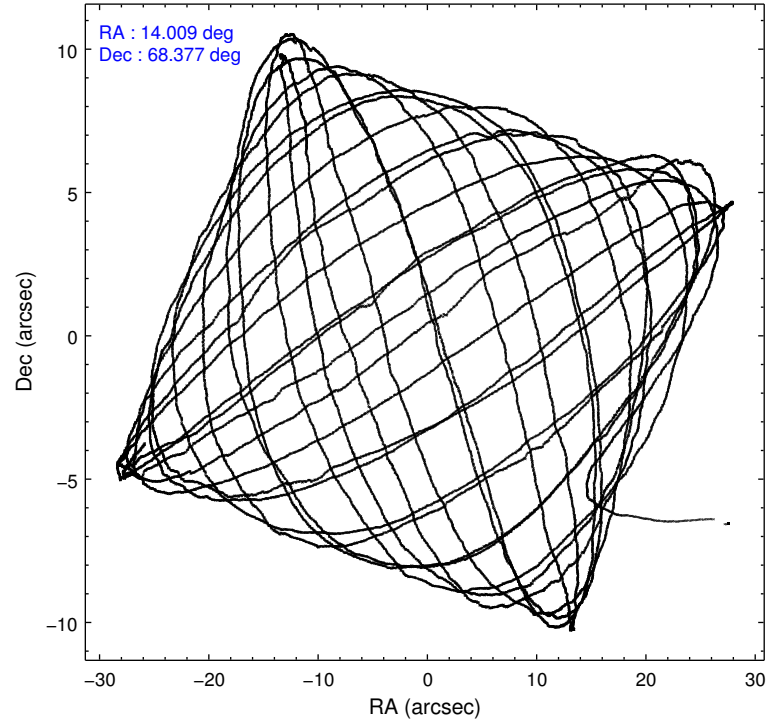
	ccd 2	ccd 3	ccd 6	ccd 7
level 1 events	74354	73853	73633	94372
rejected events	66440	63032	65152	53391
rejected %	89%	85%	88%	56%

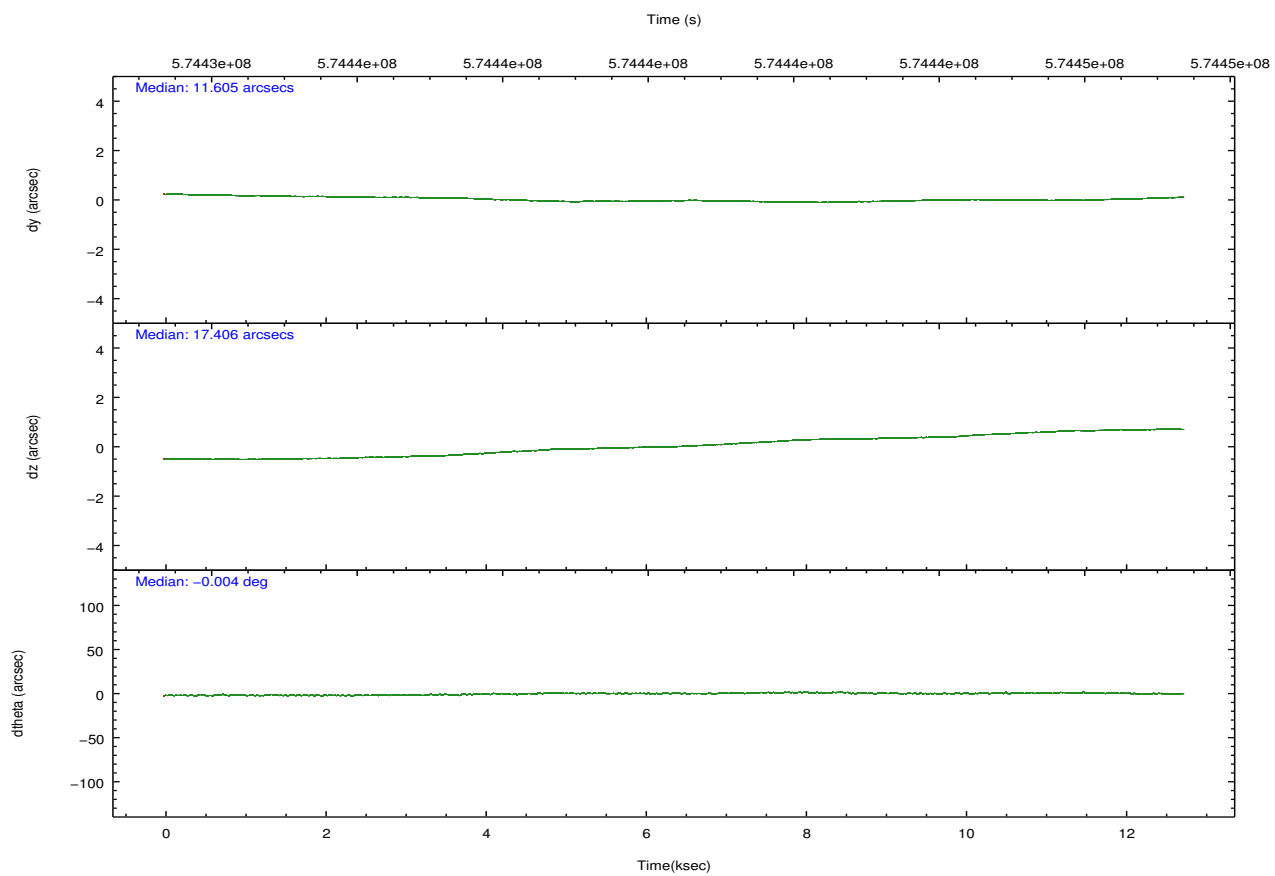
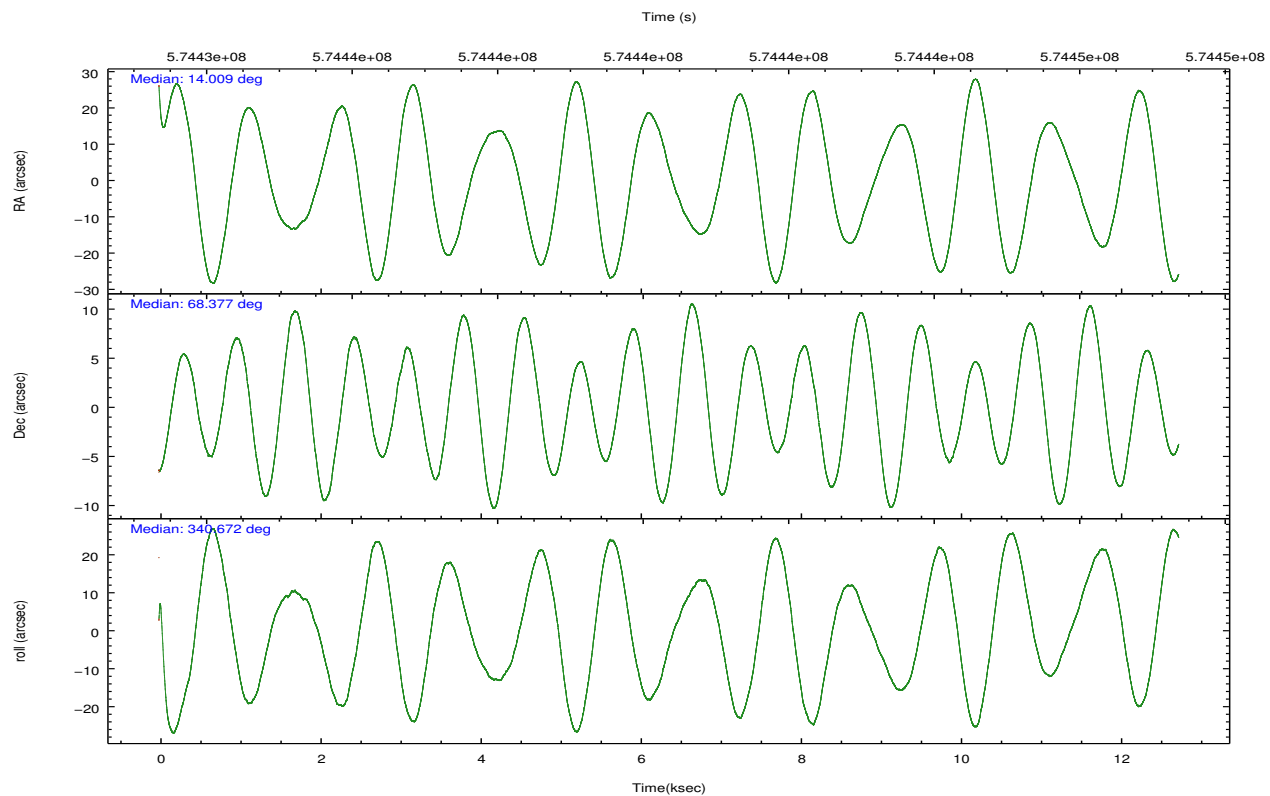
	ccd 2	ccd 3	ccd 6	ccd 7
grade 0 events	2831	5796	2663	3435
	3%	7%	3%	3%
grade 1 events	32	83	25	135
	0%	0%	0%	0%
grade 2 events	1891	1711	2000	8464
	2%	2%	2%	8%
grade 3 events	841	837	794	3119
	1%	1%	1%	3%
grade 4 events	823	827	878	3085
	1%	1%	1%	3%
grade 5 events	2908	3443	3308	9265
	3%	4%	4%	9%
grade 6 events	1531	1655	2148	22888
	2%	2%	2%	24%
grade 7 events	63497	59501	61817	43981
	85%	80%	83%	46%

2.2 Compared Parameters

Parameter	Planned	Actual	Parameter	Planned	Actual
Instrument	ACIS	ACIS	Obspar format version number	7	7
Detector	ACIS-2367	ACIS-2367	Obspar file type	PREDICTED	ACTUAL
Grating	NONE	NONE	Obspar update status	NONE	UPDATED
Data mode	VFAINT	VFAINT	CCD I0 on	N	N
Observation mode	POINTING	POINTING	CCD I1 on	N	N
[deg] Pointing RA	13.936056	14.00911110661385	CCD I2 on	O1	Y
[deg] Pointing Dec	68.371813	68.37727263228447	CCD I3 on	O2	Y
[deg] Pointing Roll	340.595984	340.6847292280091	CCD S0 on	N	N
[mm] SIM focus pos	-0.684267	-0.6828225247311905	CCD S1 on	N	N
[mm] SIM defocus	0	0.001444936568705701	CCD S2 on	Y	Y
[mm] SIM translation stage pos	-190.132523	-190.1400660498719	CCD S3 on	Y	Y
[mm] SIM translation stage offset	0	0.00754346686406393	CCD S4 on	N	N
[s] Observation start time (MET)	574434697.184000	574432981.42905	CCD S5 on	N	N
Observation start date	2016-03-15T13:10:29	2016-03-15T12:43:01	Number of optional ACIS chips dropped	0	0
[s] Observation end time (MET)	574446697.184000	574448150.40491	On-chip summing requested	N	N
Observation end date	2016-03-15T16:30:29	2016-03-15T16:55:50	Subarray requested	NONE	NONE
Read mode	TIMED	TIMED	Alternating exposures requested	N	N
			[s] Primary exposure time	0.000000	3.1

2.3 Aspect



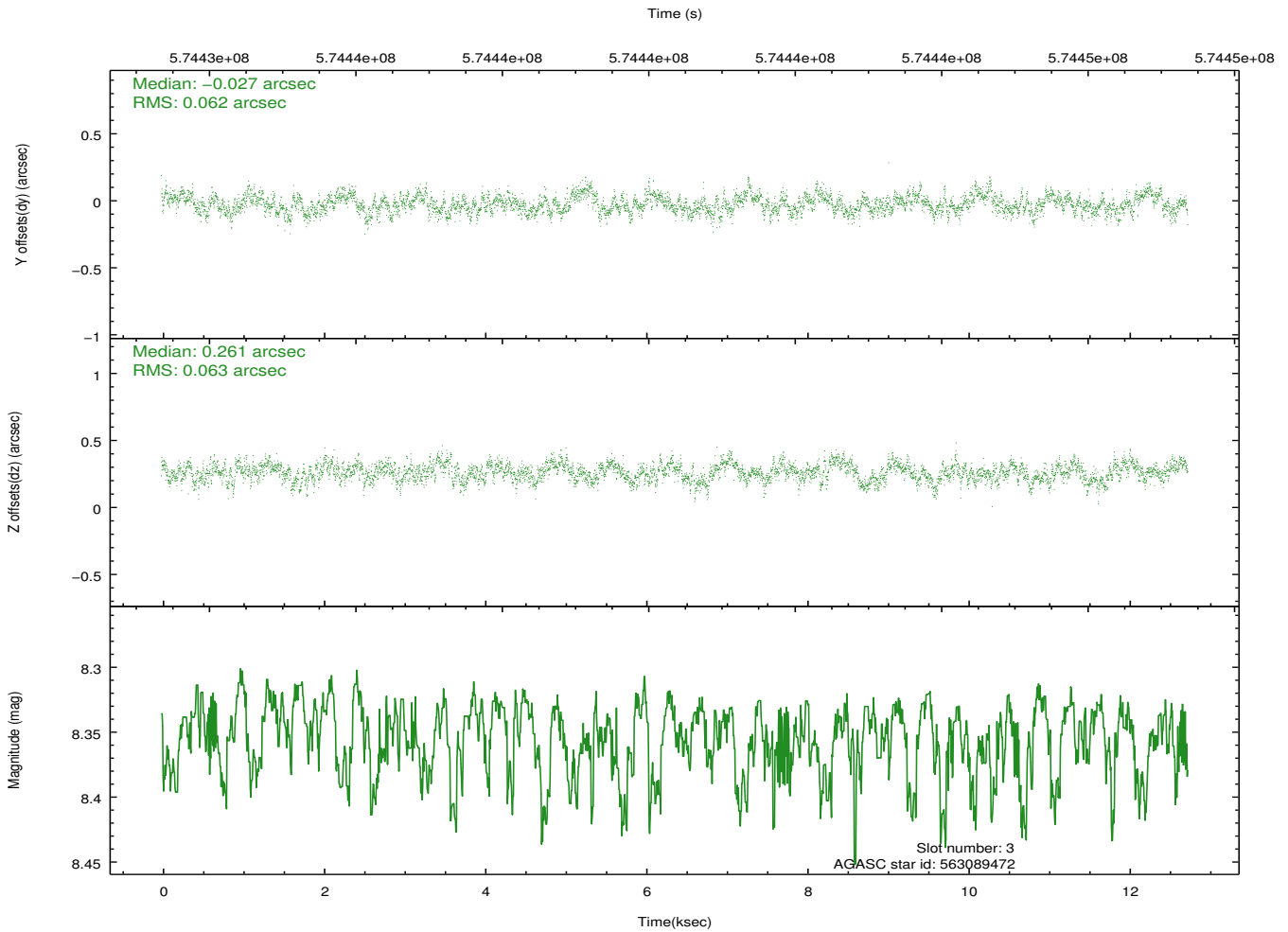
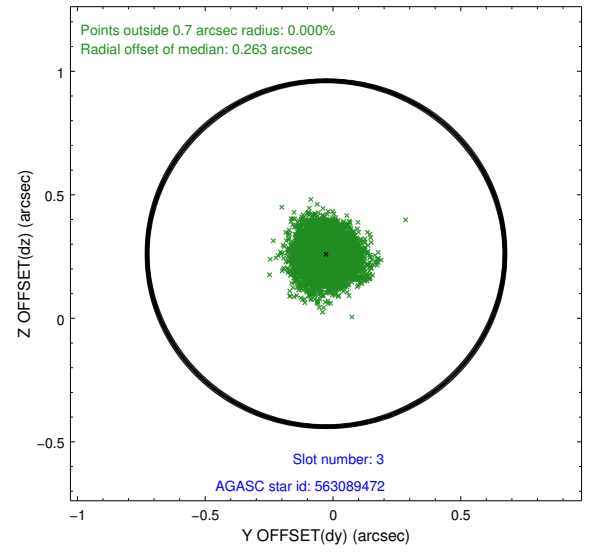
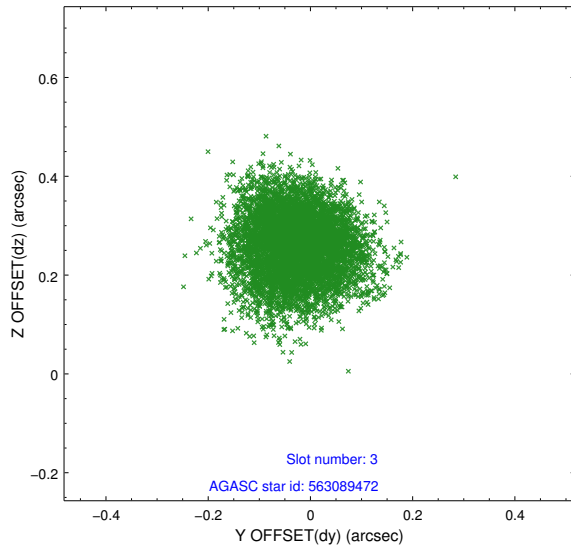


Slot Statistics

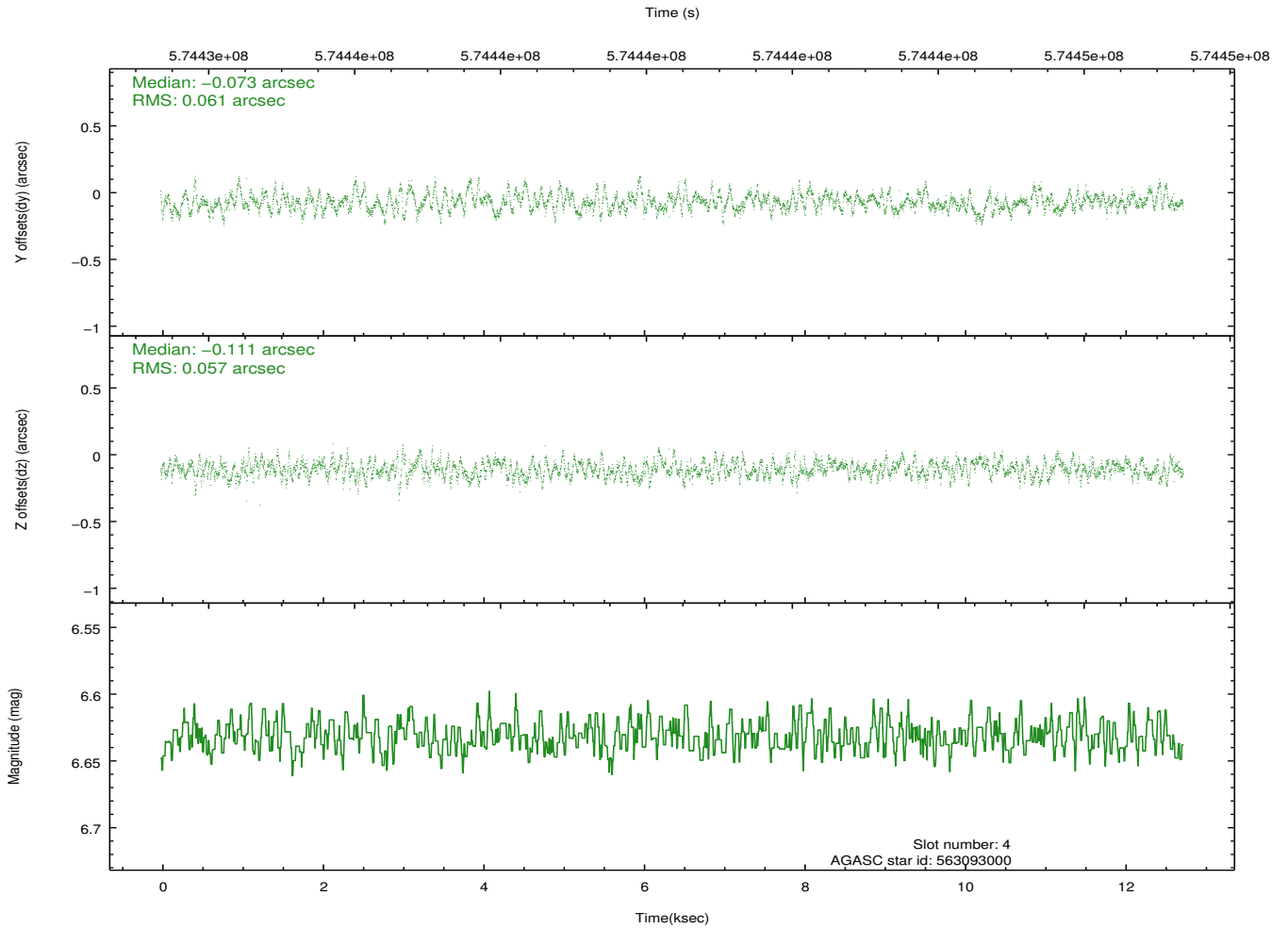
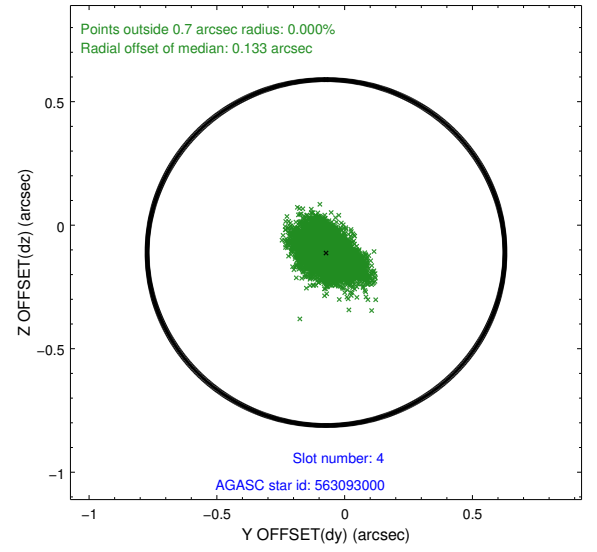
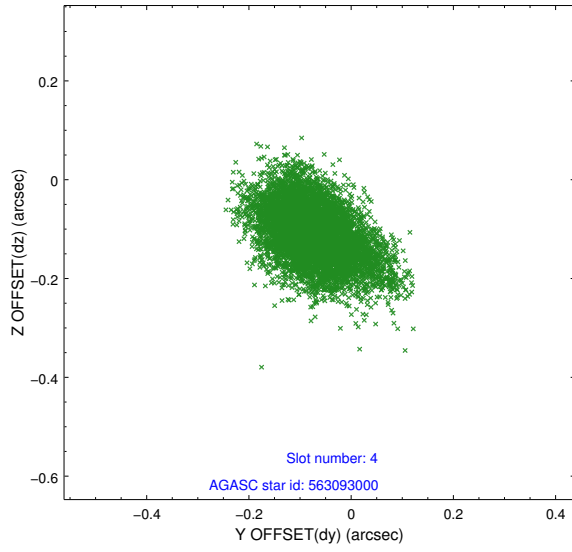
slot	status	used	id	mag	n_pts	med_dy	med_dz	dr1	dr2	ra	dec	mean_y	mean_z
0	FID		ACIS-S-2	7.10	3107	-0.126	-0.104	0.011	0.018	0.000000	0.000000	-764.63	-1739.00
1	FID		ACIS-S-4	7.21	3107	0.363	0.088	0.006	0.011	0.000000	0.000000	2148.96	169.28
2	FID		ACIS-S-5	7.24	3108	-0.268	0.024	0.009	0.015	0.000000	0.000000	-1817.13	163.31
3	GUIDE	used	563089472	8.35	6215	-0.027	0.261	0.095	0.150	12.317204	68.467239	-2140.75	-360.29
4	GUIDE	used	563093000	6.63	6215	-0.073	-0.111	0.088	0.146	14.229857	68.775656	-121.05	1499.16
5	GUIDE	used	563093968	7.81	6213	-0.133	-0.138	0.083	0.134	15.522687	68.678901	1582.15	1758.09
6	GUIDE	used	563095712	8.91	6210	0.007	-0.043	0.116	0.181	14.355660	67.835388	1179.07	-1629.82
7	GUIDE	used	563092576	9.29	6207	0.220	0.032	0.135	0.223	14.482096	67.739867	1457.85	-1895.55

2.4 Star Slots

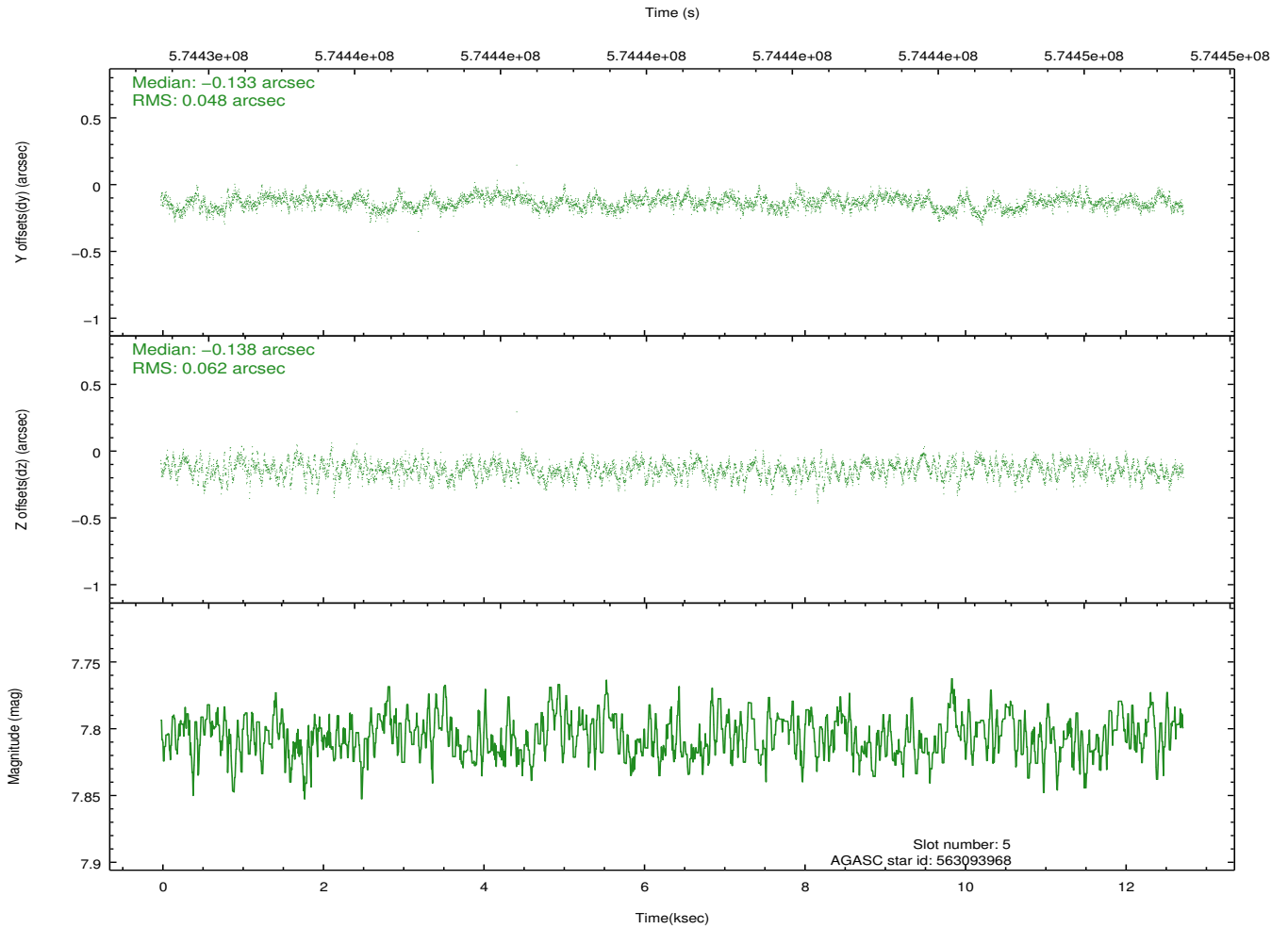
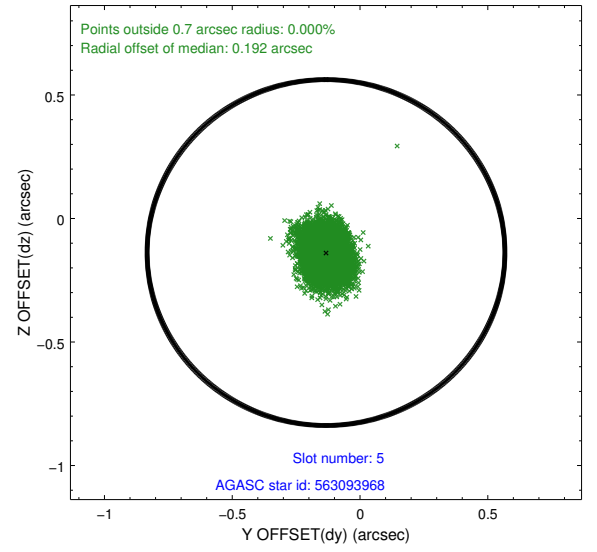
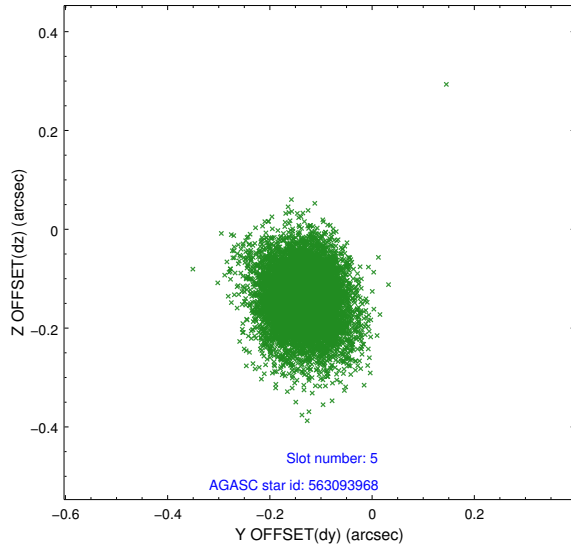
2.4.1 Slot 3



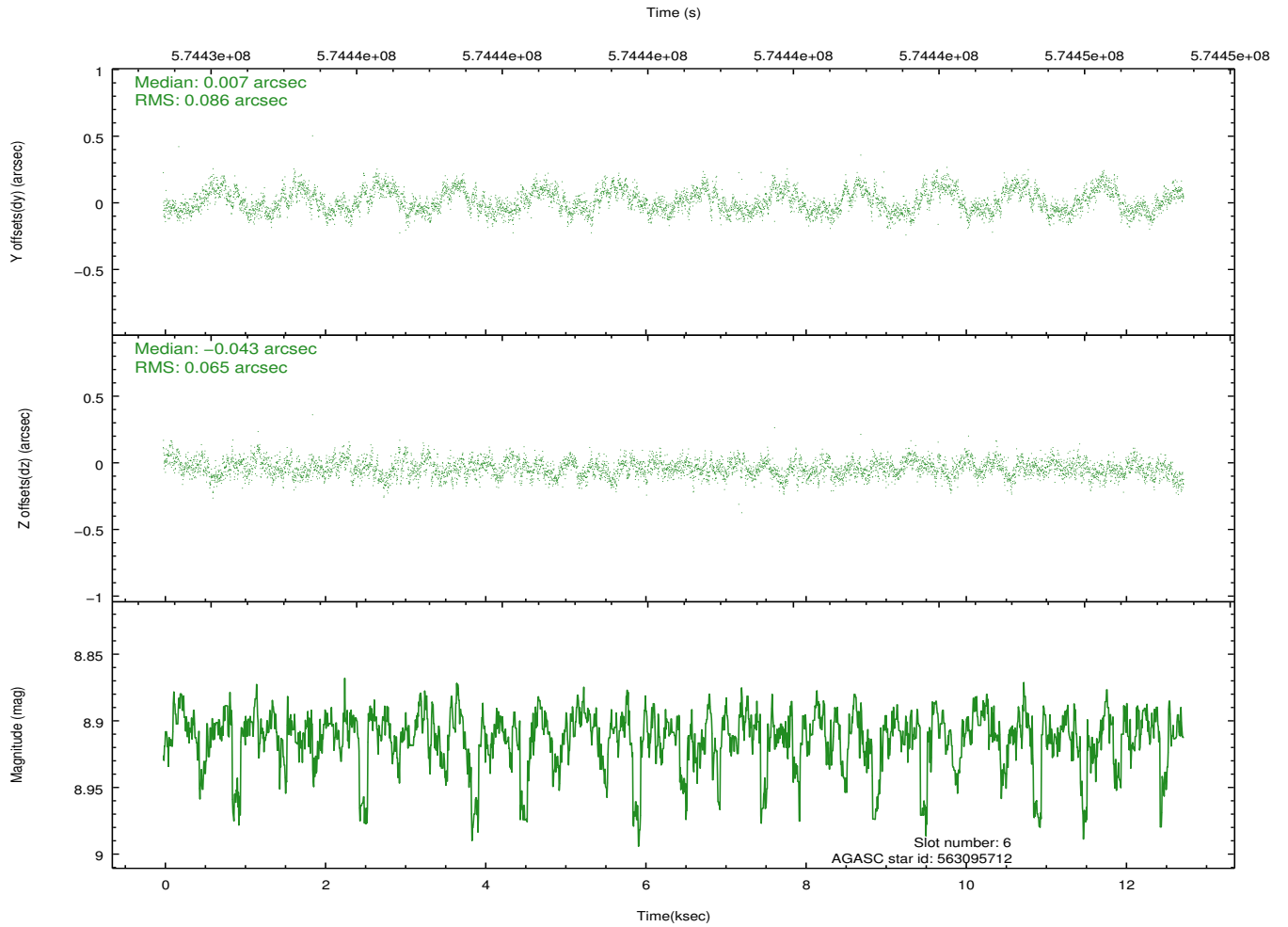
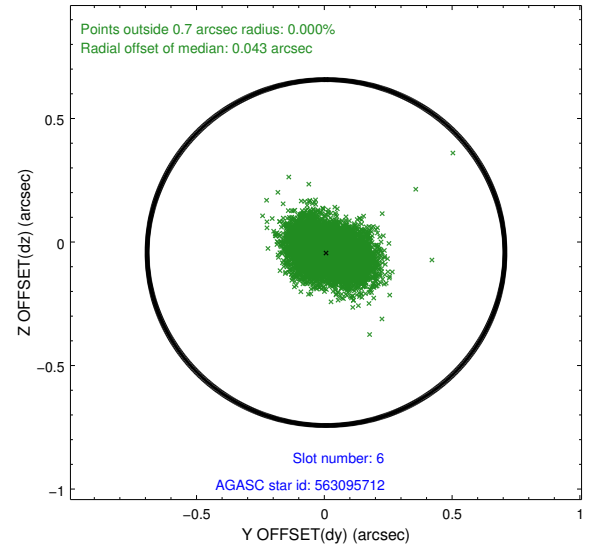
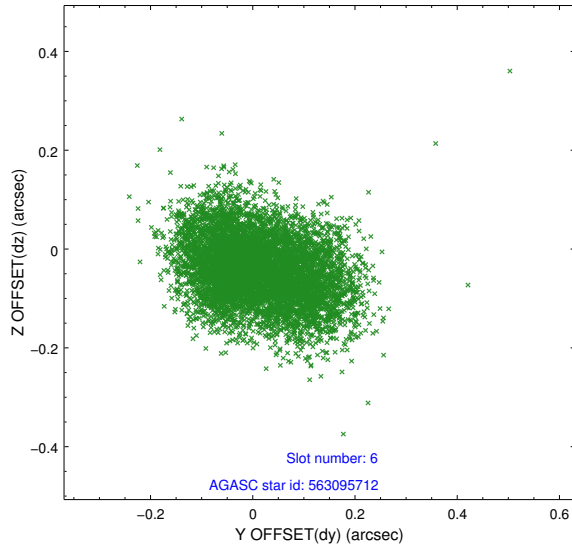
2.4.2 Slot 4



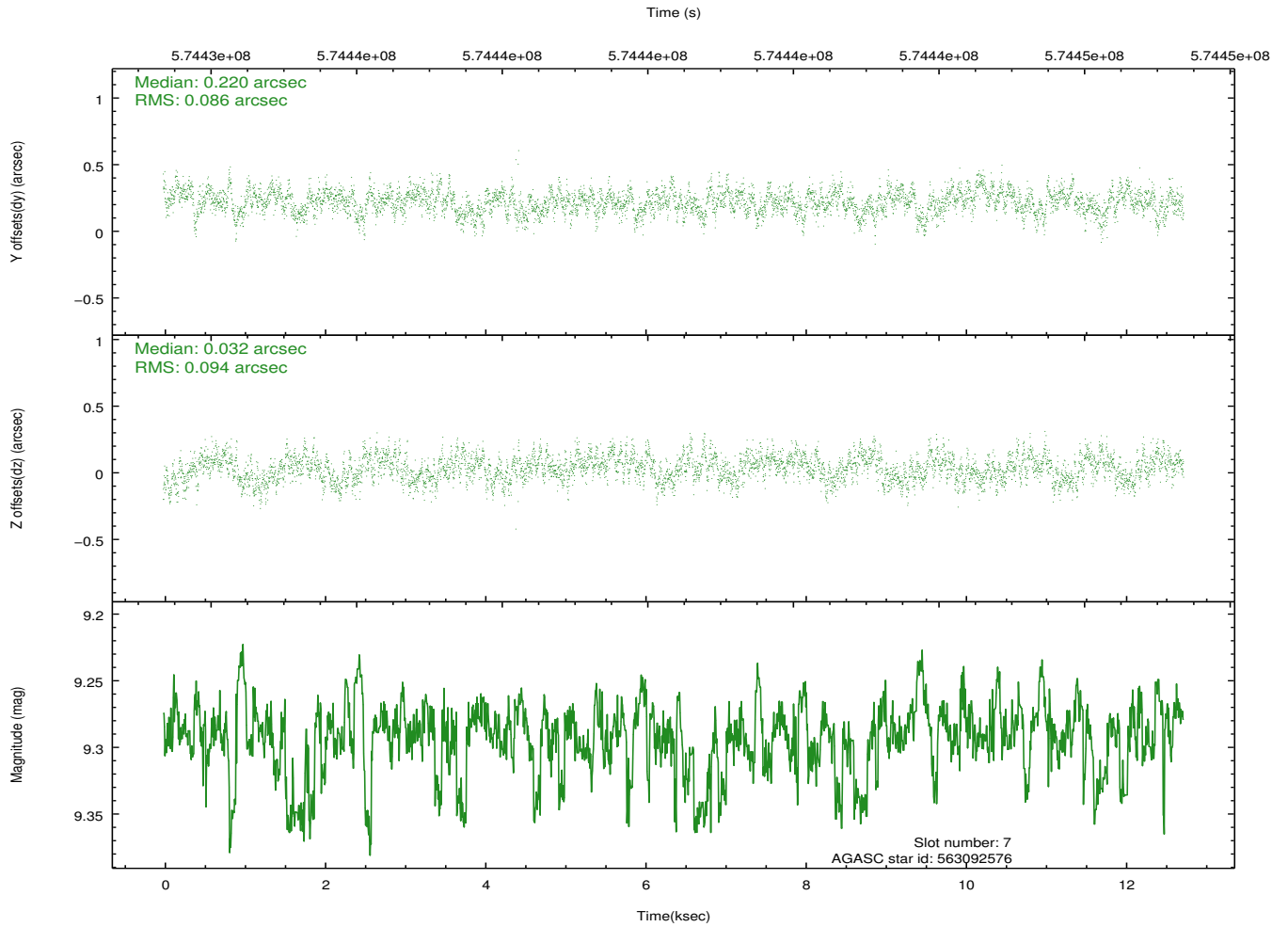
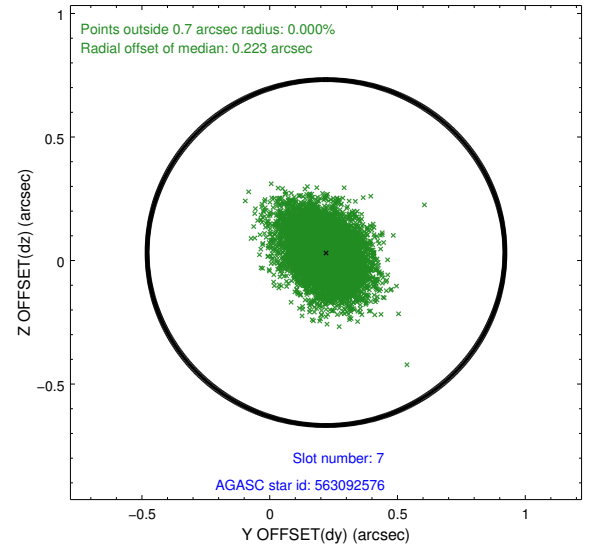
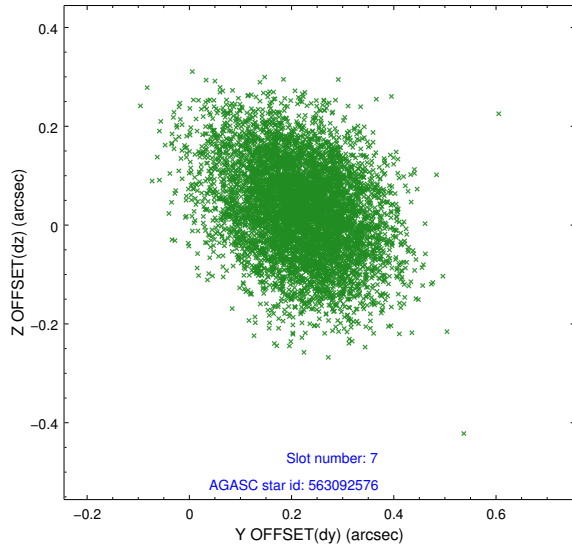
2.4.3 Slot 5



2.4.4 Slot 6

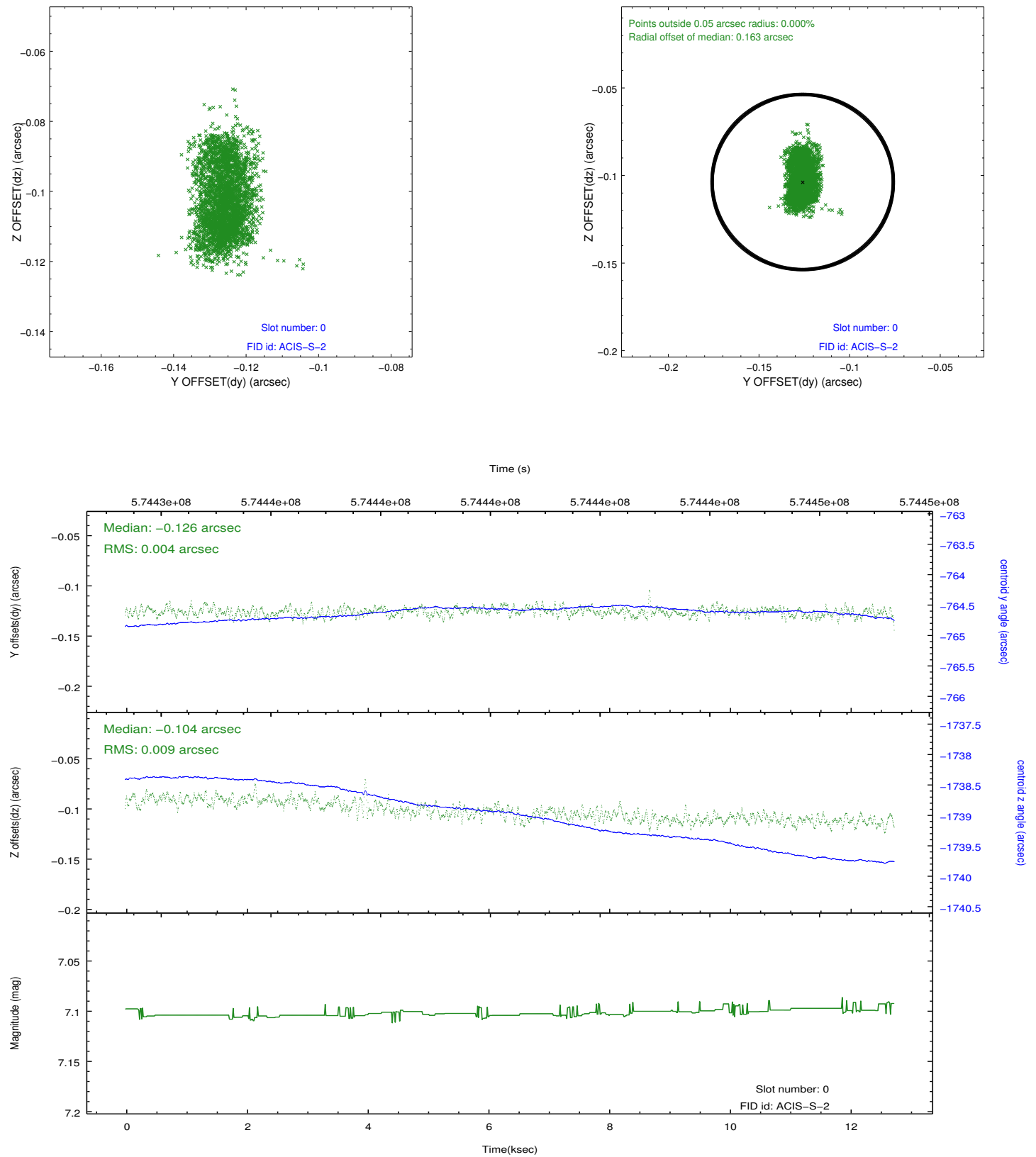


2.4.5 Slot 7

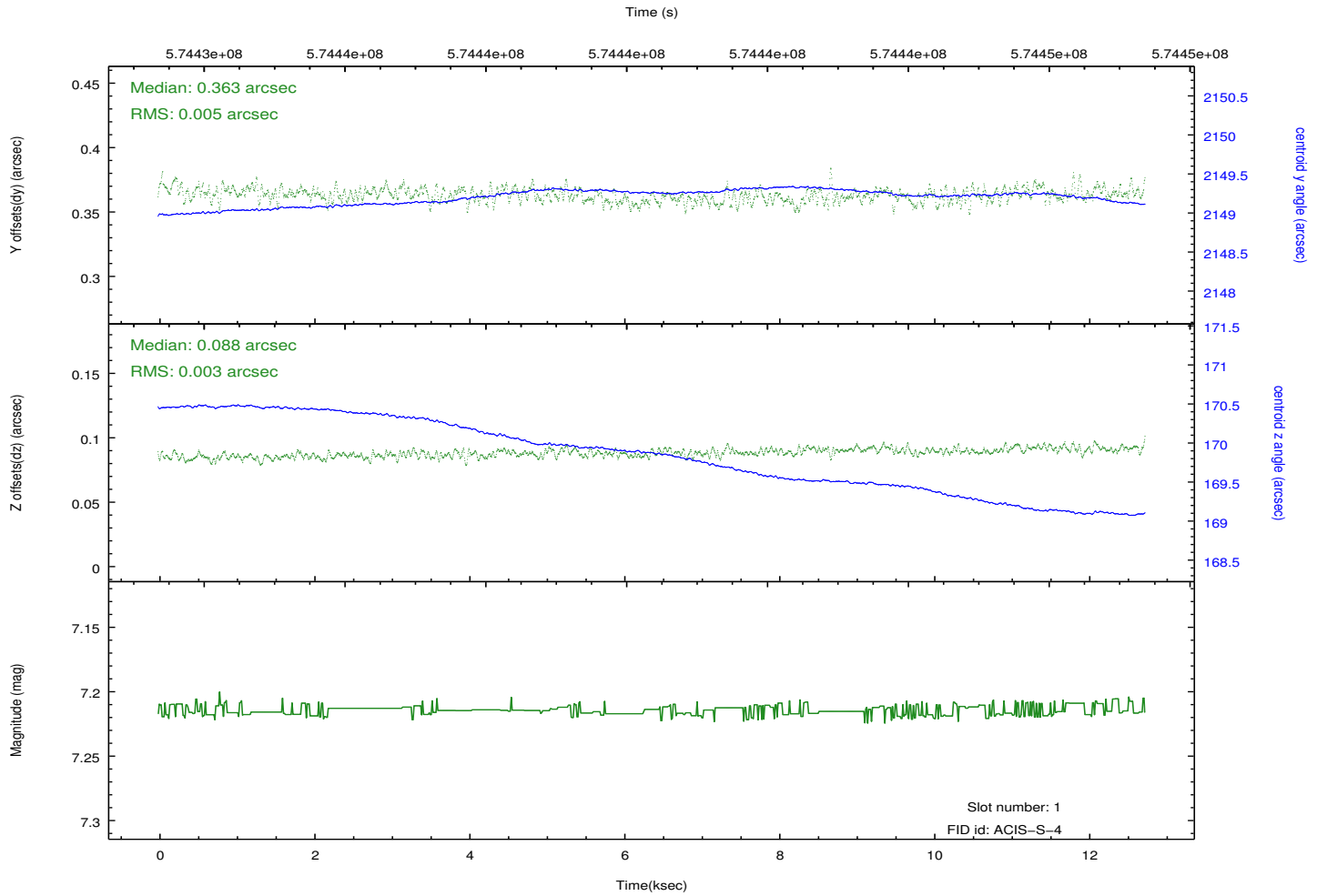
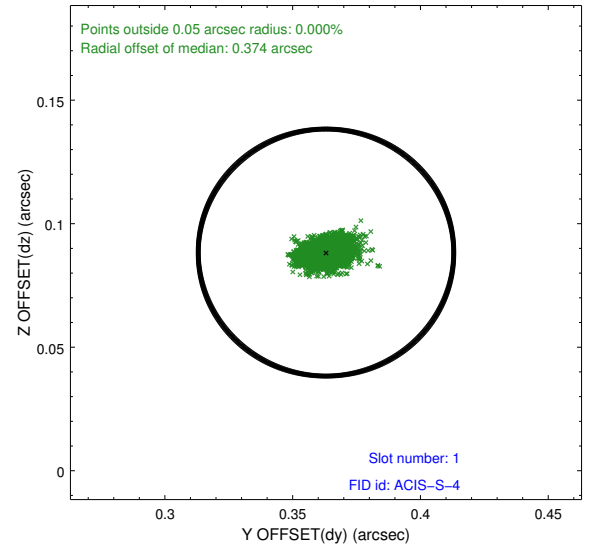
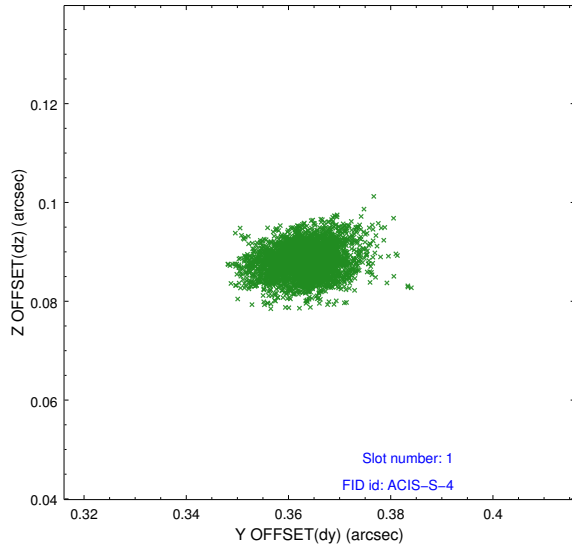


2.5 FID Slots

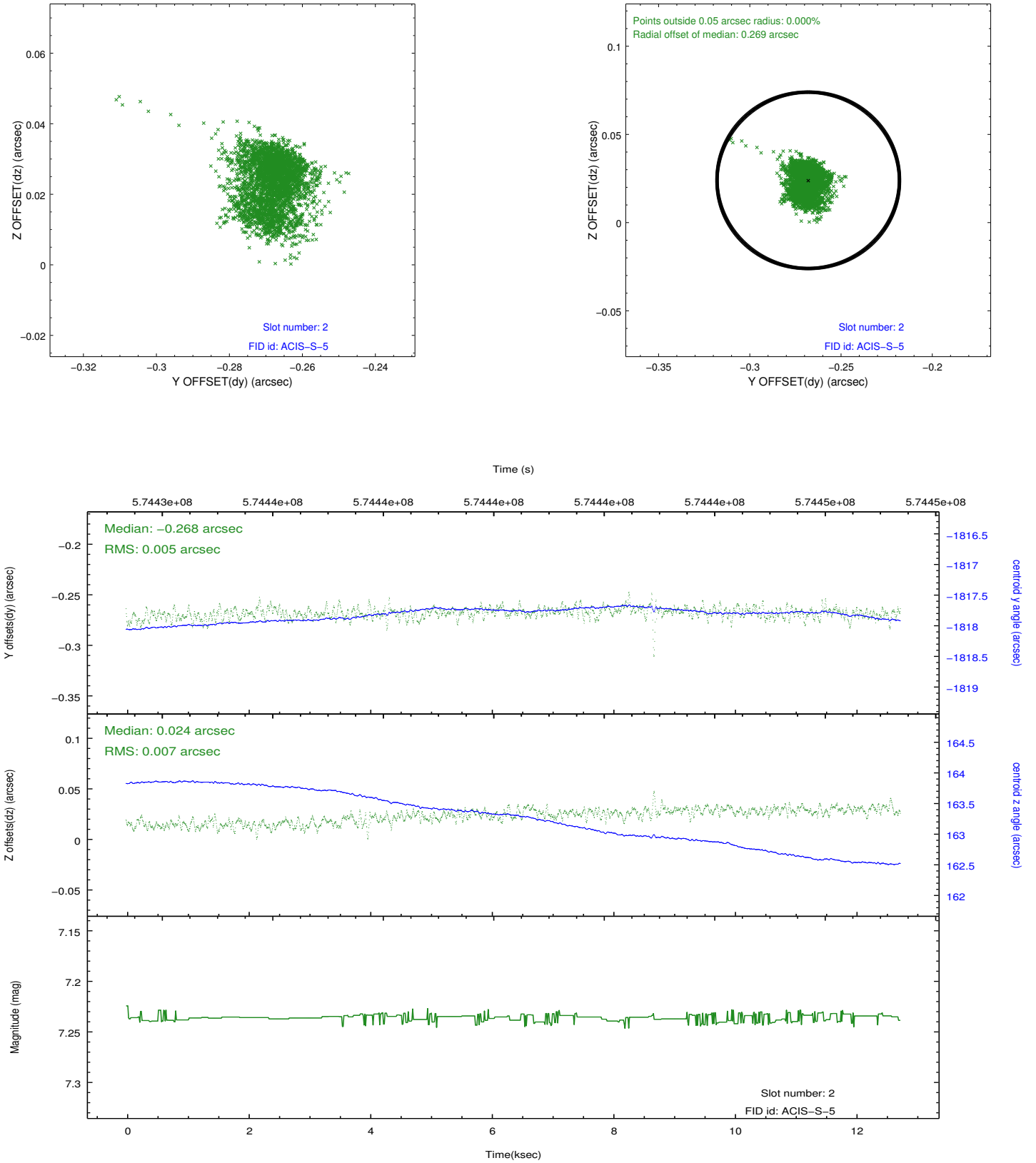
2.5.1 Slot 0



2.5.2 Slot 1



2.5.3 Slot 2



A Summary

A.1 Status

V&V Scientist	Joy Nichols
V&V Date (YYYY-MM-DD)	2016.03.16
V&V Edition	1
V&V Disposition and Status	OK
V&V Charge Time	12.070427639008

A.2 Comments