

V&V Reference Report

L2 ASCDS Version : 8.4.5

Observation 1670 - L2 Version 5
Chandra X-Ray Center

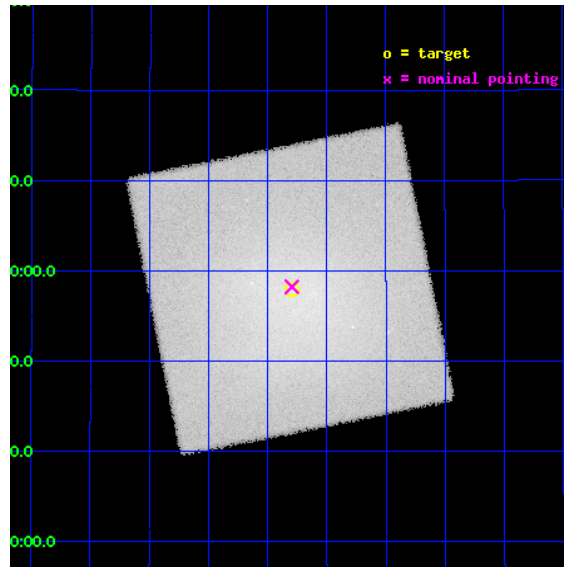
L2 Processing Date : Sep 11 2012

Contents

1	Front	2
2	OBI	3
2.1	OBI	3
2.1.1	Images	3
2.1.2	Parameters	4
2.1.3	Events	4
2.2	Compared Parameters	5
2.3	Aspect	6
2.4	Star Slots	9
2.4.1	Slot 3	9
2.4.2	Slot 4	10
2.4.3	Slot 5	11
2.4.4	Slot 6	12
2.4.5	Slot 7	13
2.5	FID Slots	14
2.5.1	Slot 0	14
2.5.2	Slot 1	15
2.5.3	Slot 2	16
A	Summary	17
A.1	Status	17
A.2	Comments	17

1 Front

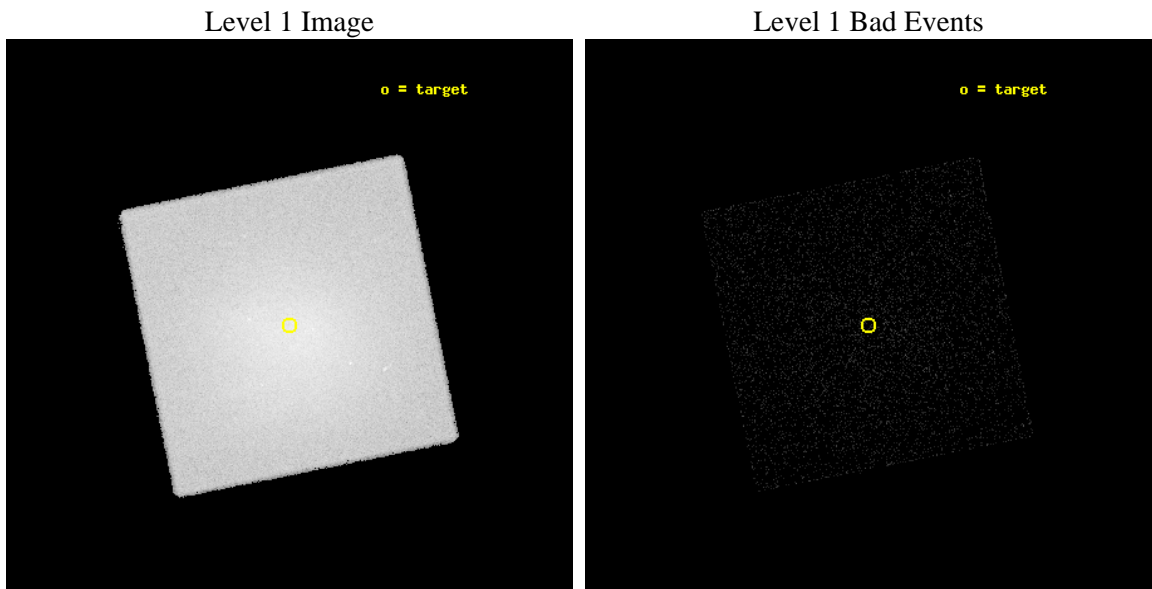
seq_num	890024	Sequence number
obs_id	1670	Observation id
title	HRC-I CALIBRATION OBSERVATION OF THE COMA CLUSTER	Proposal title
observer	Dr. CXC Calibration	Principal investigator
object	COMA	Source name
ra_targ	194.95	Observer's specified target RA [deg]
dec_targ	27.966667	Observer's specified target Dec [deg]
ra_nom	194.94897985985	Nominal RA [deg]
dec_nom	27.970893950426	Nominal Dec [deg]
roll_nom	123.70937309972	Nominal Roll [deg]
revision	5	Processing version of data
ontime	17870.106940523	[s]
livetime	17720.195529153	Ontime multiplied by DTCOR
l2events	765876	Number of level 2 events



2 OBI

2.1 OBI

2.1.1 Images



2.1.2 Parameters

obi_num	1	Obi number	sched_exp_time	18000.000000	[s] Scheduled observation exposure time
ascdsver	8.4.5	Processing system revision	ontime	17870.106940523	[s]
caldbver	4.5.1.1	 	l1events	1035633	Number of level 1 events
date	2012-09-11T23:56:43	Date and time of file creation			
revision	5	Processing version of data			

2.1.3 Events

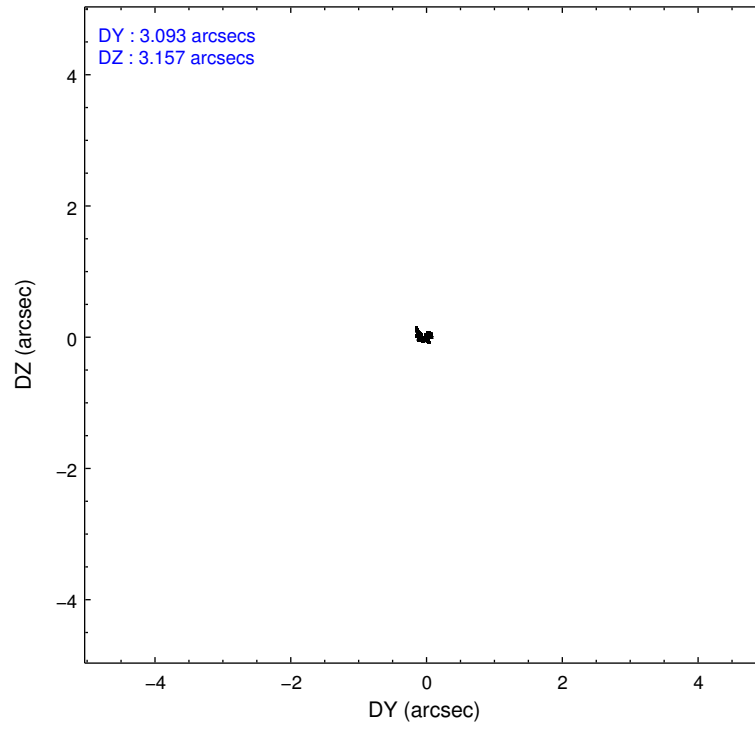
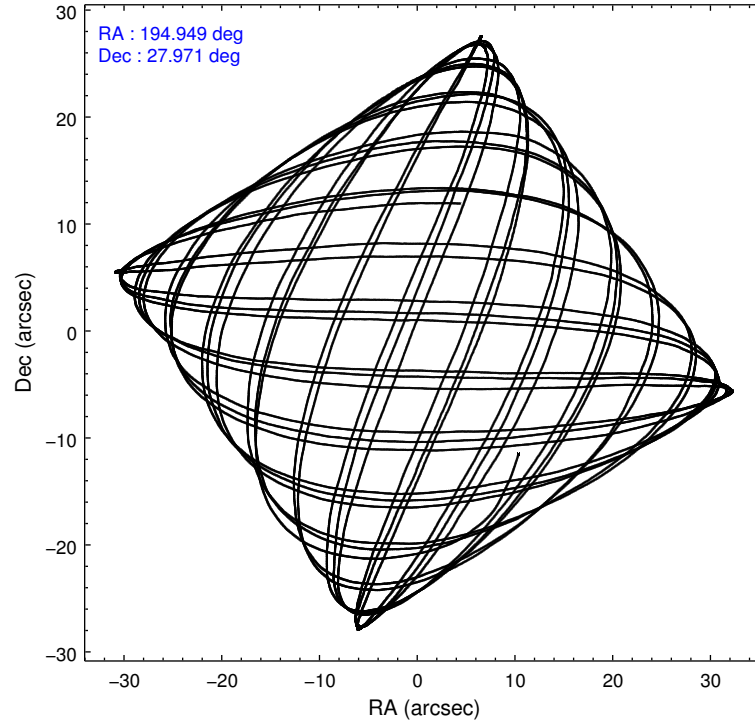
Level 1 Events

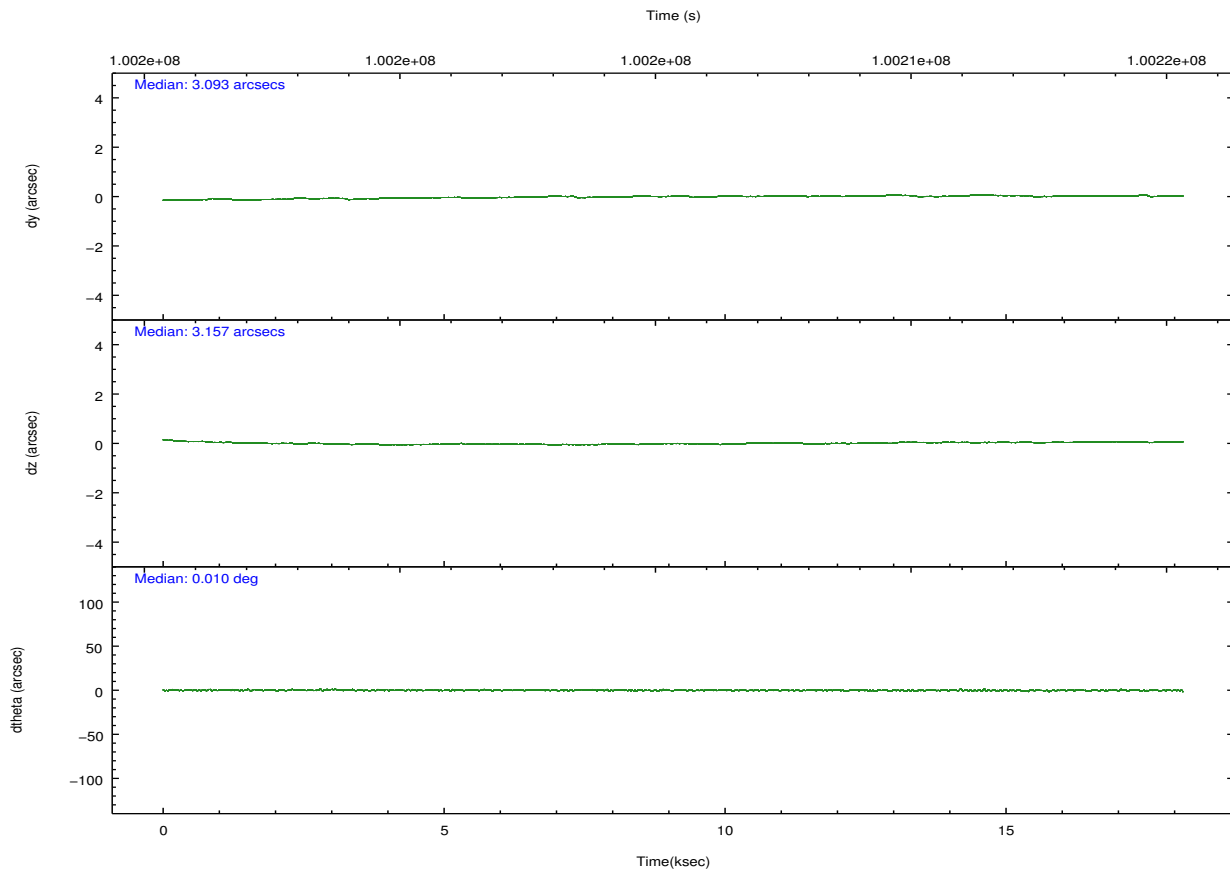
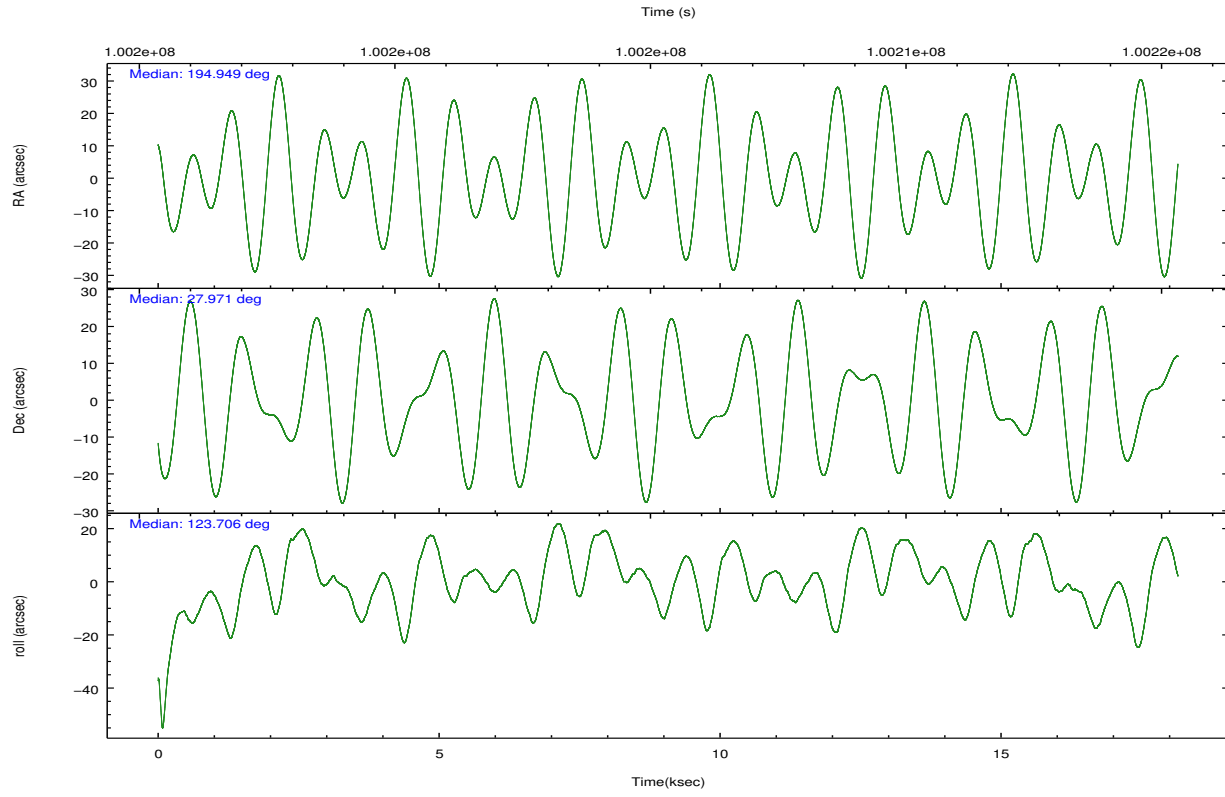
	segment 0
level 1 events	1035633
rejected events	31017
rejected %	2%

2.2 Compared Parameters

Parameter	Planned	Actual	Parameter	Planned	Actual
Instrument	HRC	HRC	Obspar format version number	7	7
Detector	HRC-I	HRC-I	Obspar file type	PREDICTED	ACTUAL
Grating	NONE	NONE	Obspar update status	NONE	UPDATED
Data mode	OBSERVING	OBSERVING			
Observation mode	POINTING	POINTING			
[deg] Pointing RA	194.976913	194.9489798598515			
[deg] Pointing Dec	27.959321	27.97089395042577			
[deg] Pointing Roll	123.791747	123.7093730997201			
[s] Window start time (MET)	97372864.184000	97372864.184000			
[s] Window stop time (MET)	102124864.184000	102124864.184000			
[mm] SIM focus pos	-1.040293	-1.038866356238299			
[mm] SIM defocus	0	0.001426264420575141			
[mm] SIM translation stage pos	126.985494	126.9804656746847			
[mm] SIM translation stage offset	0	0.005023216916882234			
[s] Observation start time (MET)	100196421.184000	100195684.58801			
Observation start date	2001-03-05T16:19:17	2001-03-05T16:08:04			
[s] Observation end time (MET)	100214421.184000	100215148.31376			
Observation end date	2001-03-05T21:19:17	2001-03-05T21:32:28			

2.3 Aspect



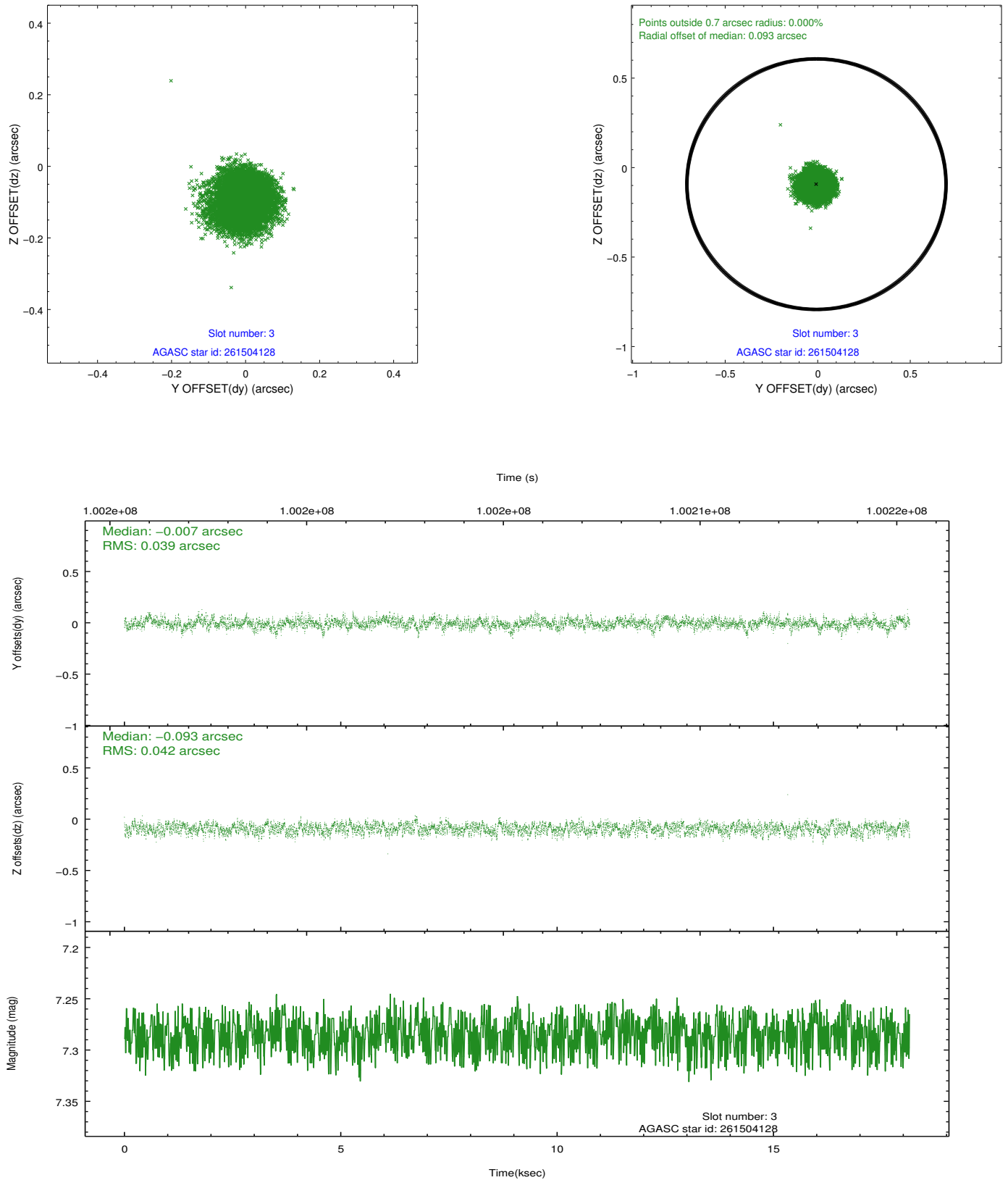


Slot Statistics

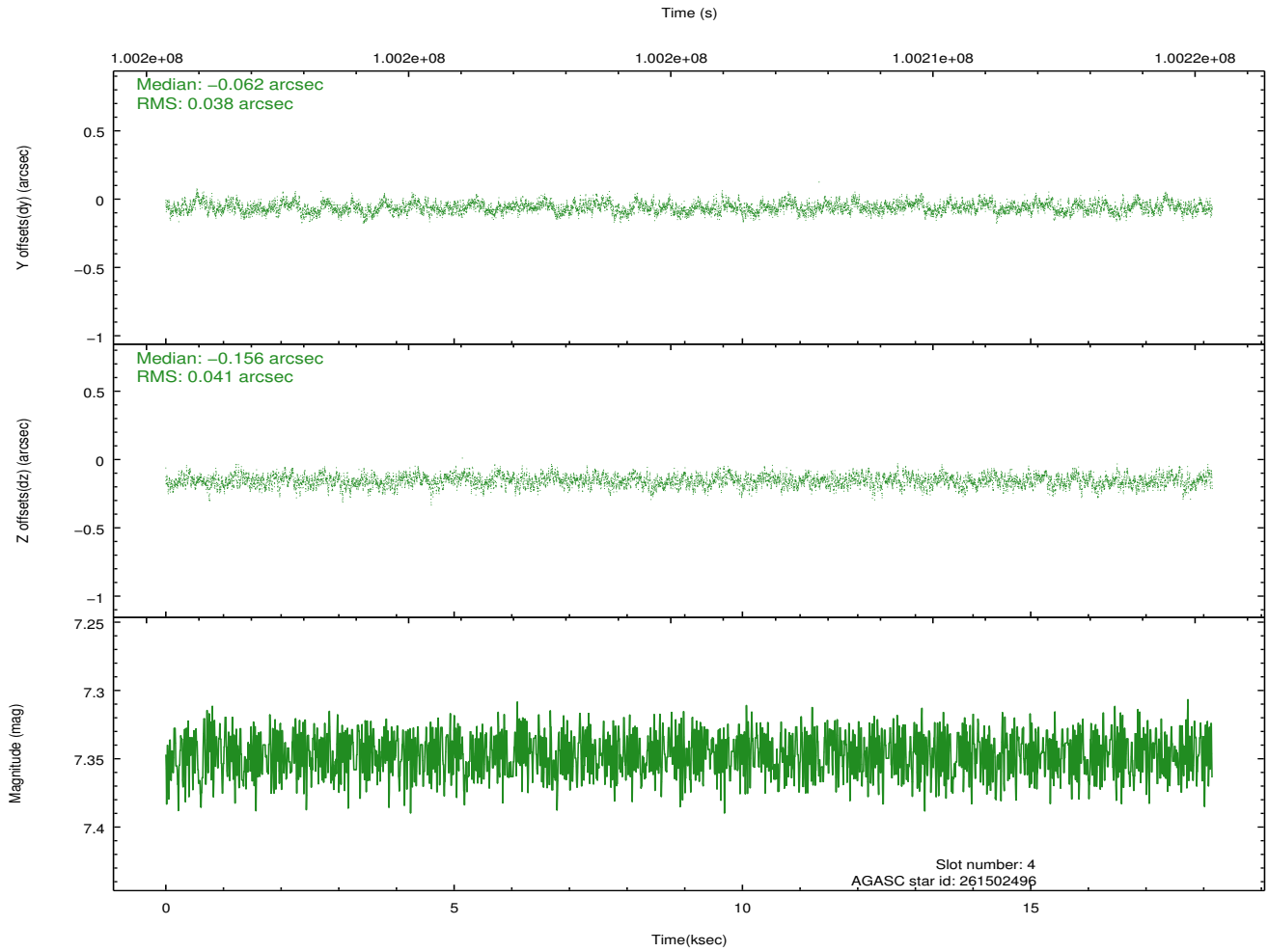
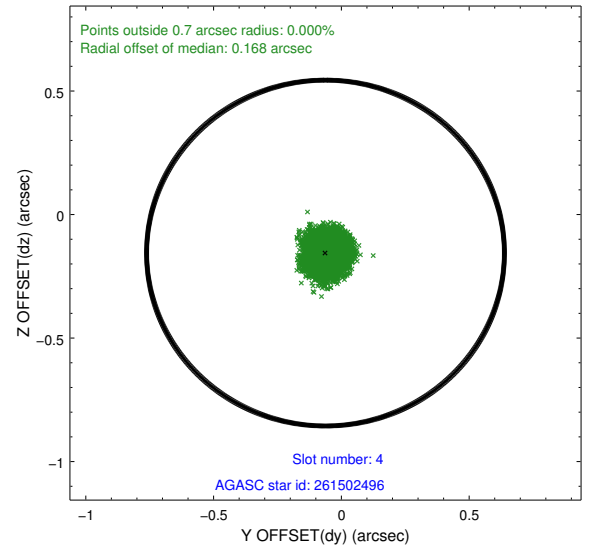
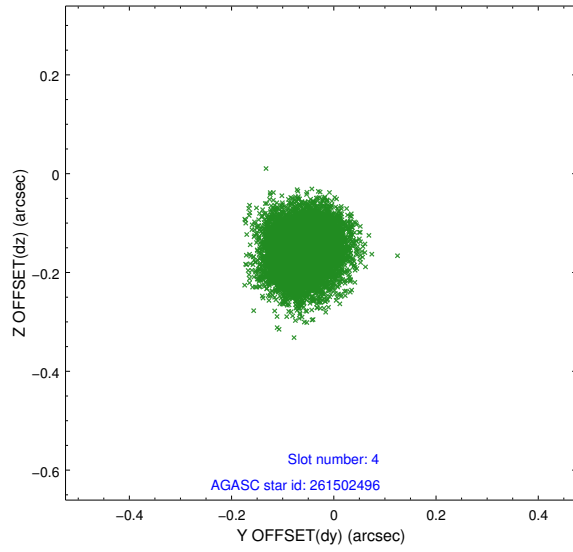
slot	status	id	mag	n_pts	med_dy	med_dz	dr1	dr2	ra	dec	mean_y	mean_z
0	FID	HRC-I-1	6.96	4427	0.081	0.037	0.006	0.010	0.000000	0.000000	-758.51	-1290.79
1	FID	HRC-I-3	7.05	4427	-0.002	-0.043	0.007	0.011	0.000000	0.000000	-1187.19	1013.42
2	FID	HRC-I-4	6.98	4426	0.034	-0.083	0.006	0.009	0.000000	0.000000	1284.03	1011.43
3	GUIDE	261504128	7.28	8854	-0.007	-0.093	0.061	0.097	194.640935	28.319570	1671.16	162.51
4	GUIDE	261502496	7.35	8854	-0.062	-0.156	0.060	0.096	194.887297	28.065668	476.59	23.13
5	GUIDE	261498392	8.31	8853	0.089	0.241	0.073	0.117	194.888587	28.238913	992.42	-327.12
6	GUIDE	261505232	9.79	8848	0.011	-0.009	0.131	0.213	194.216553	27.802521	883.58	2321.69
7	GUIDE	261490800	10.18	8846	-0.033	0.011	0.165	0.282	195.029641	27.224508	-2292.43	1330.83

2.4 Star Slots

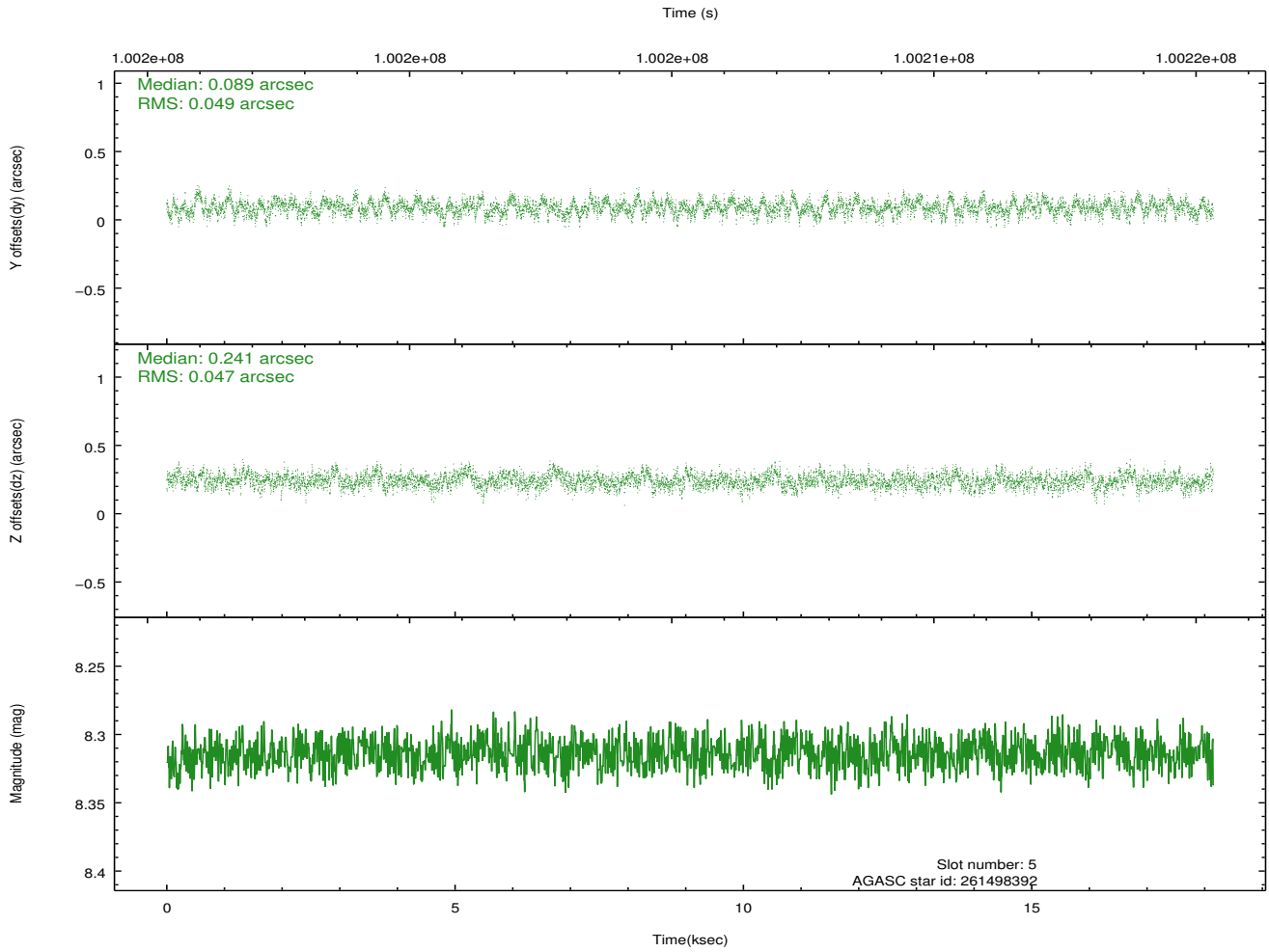
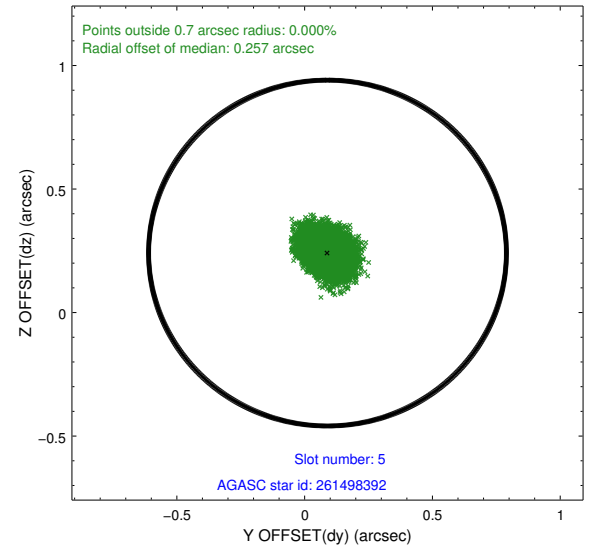
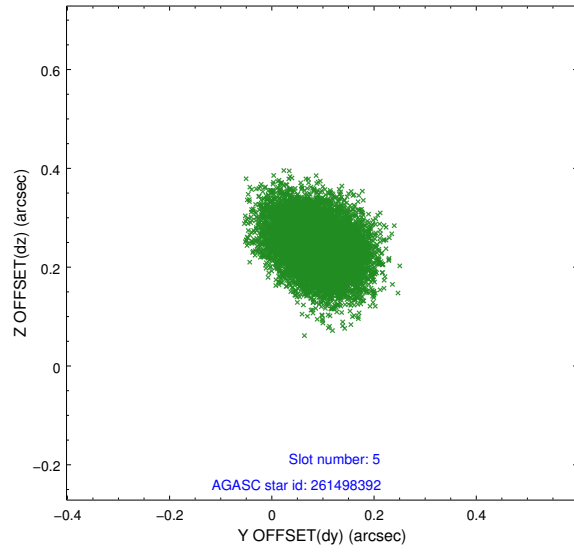
2.4.1 Slot 3



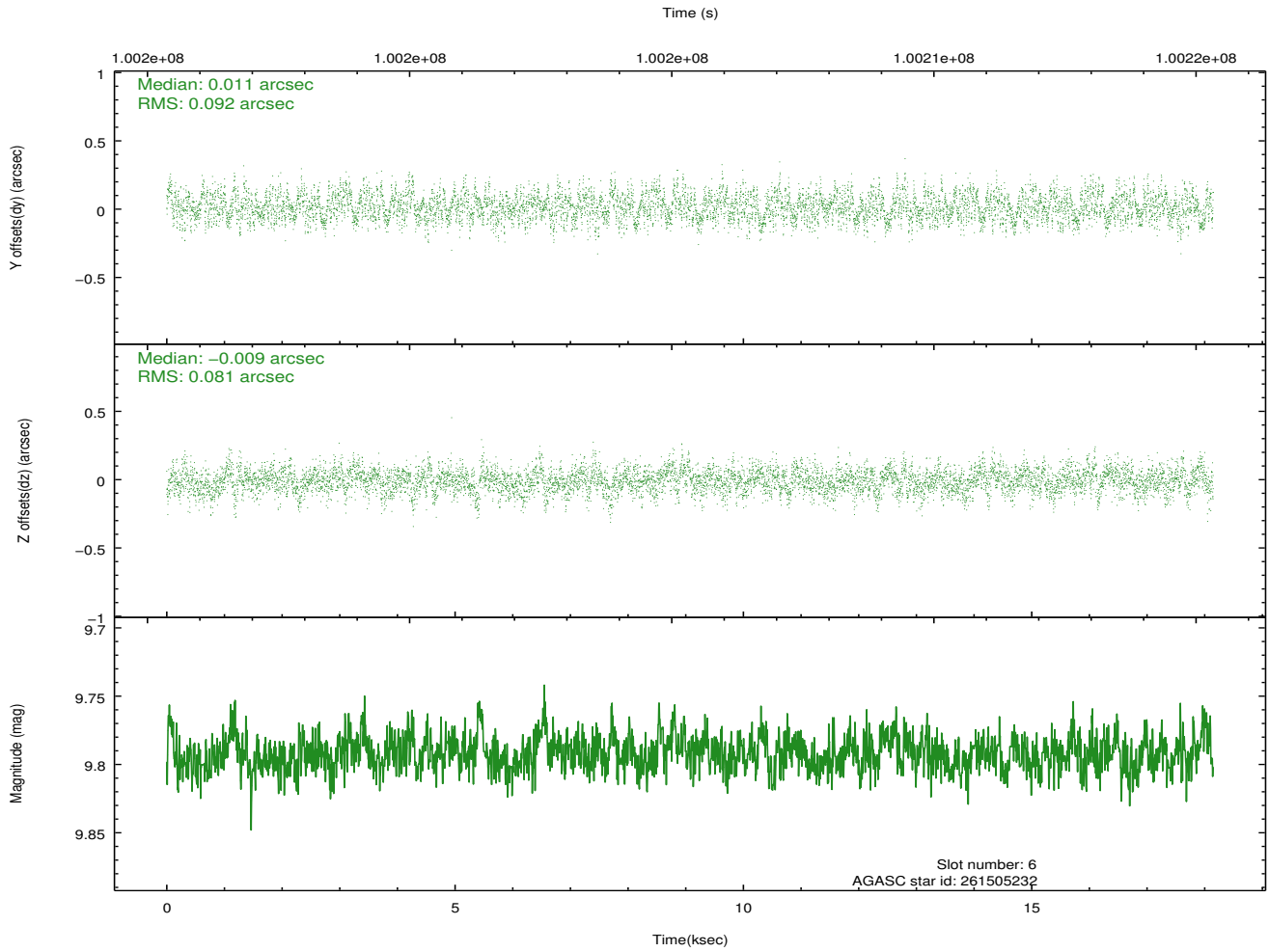
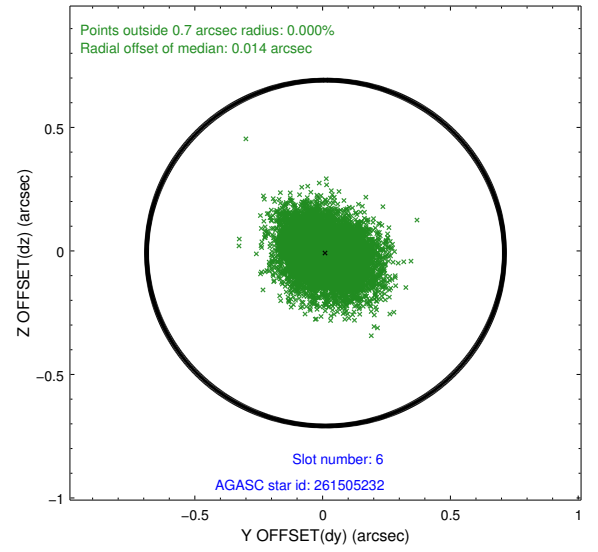
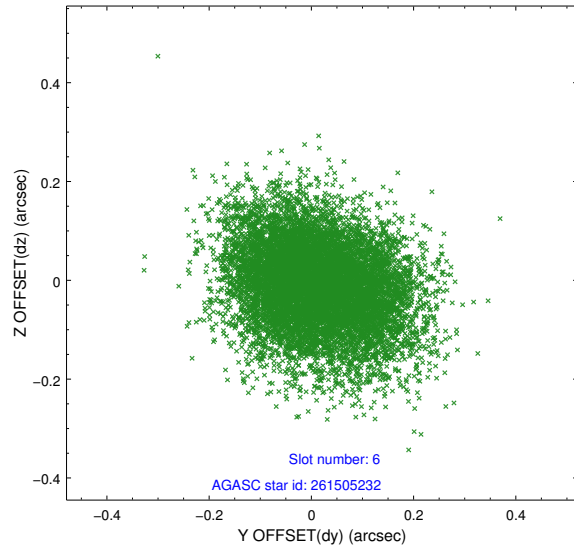
2.4.2 Slot 4



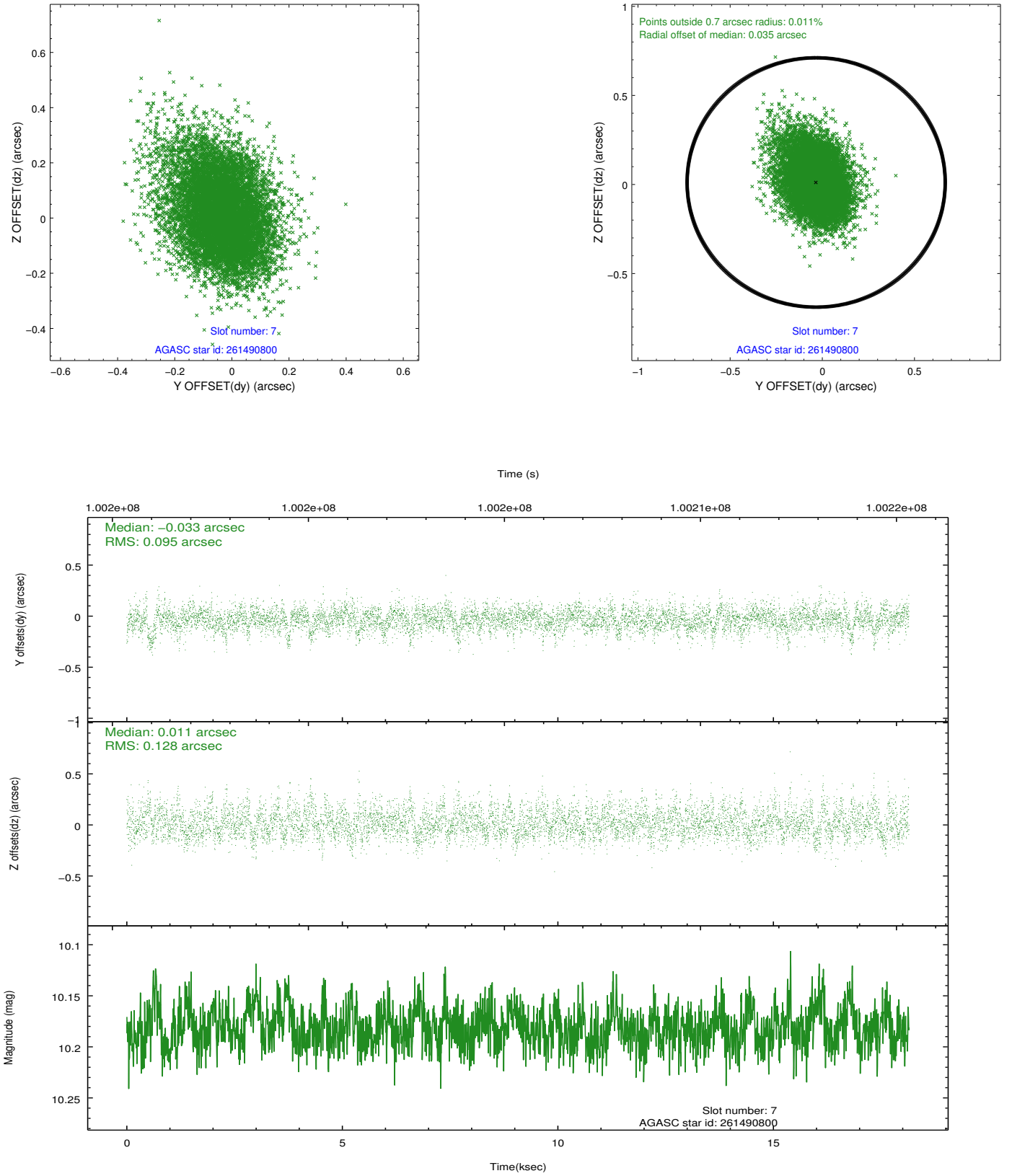
2.4.3 Slot 5



2.4.4 Slot 6

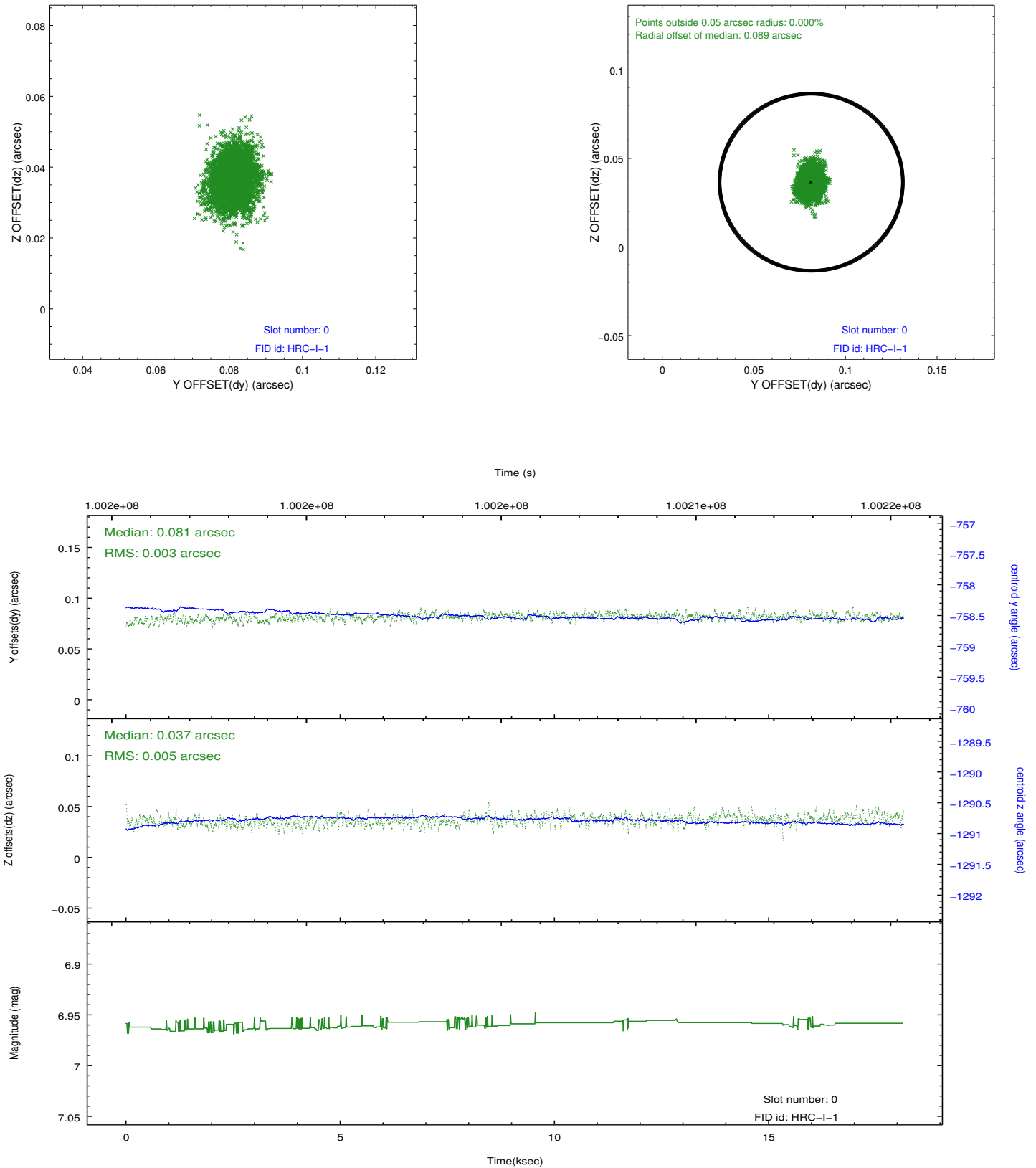


2.4.5 Slot 7

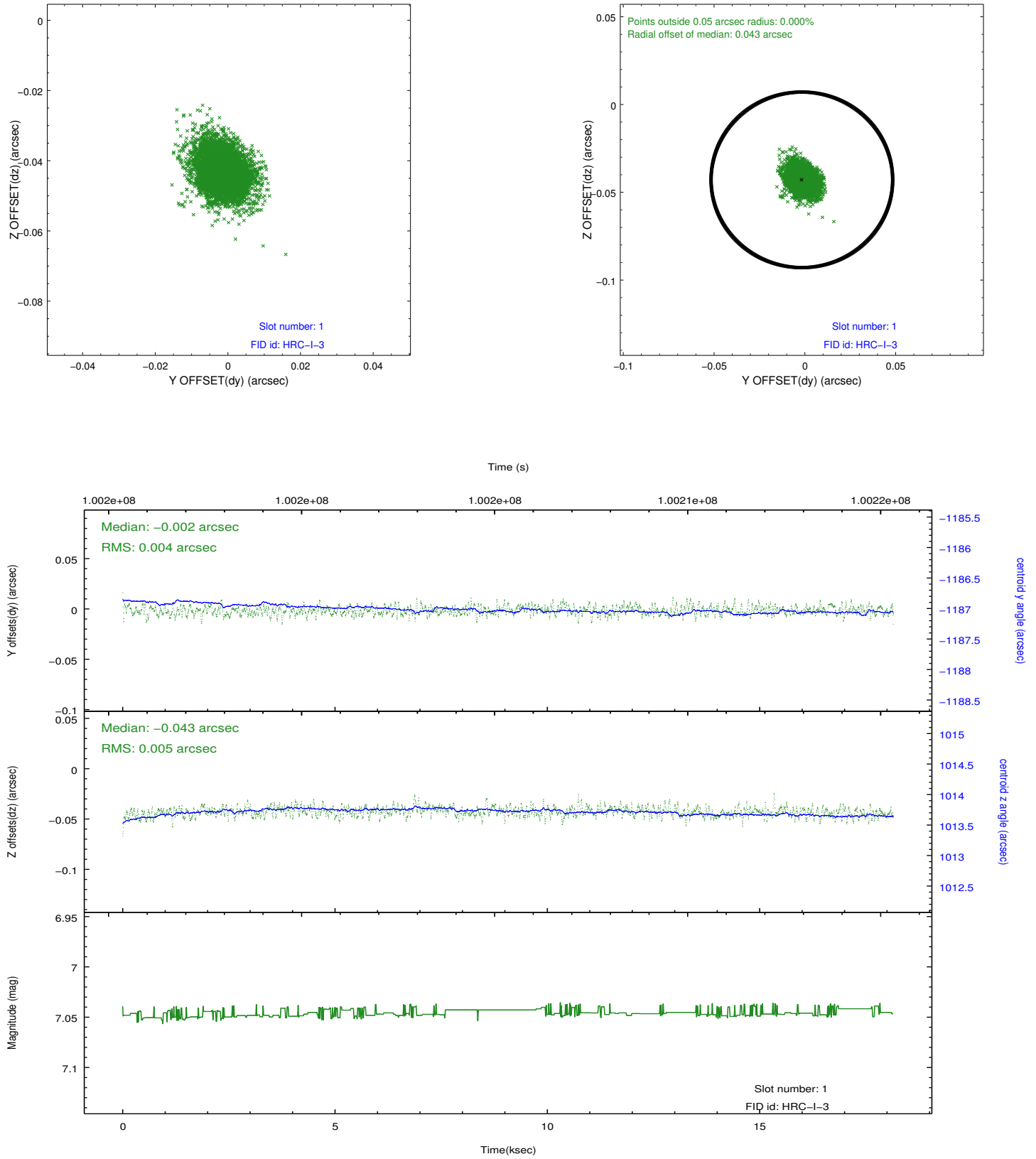


2.5 FID Slots

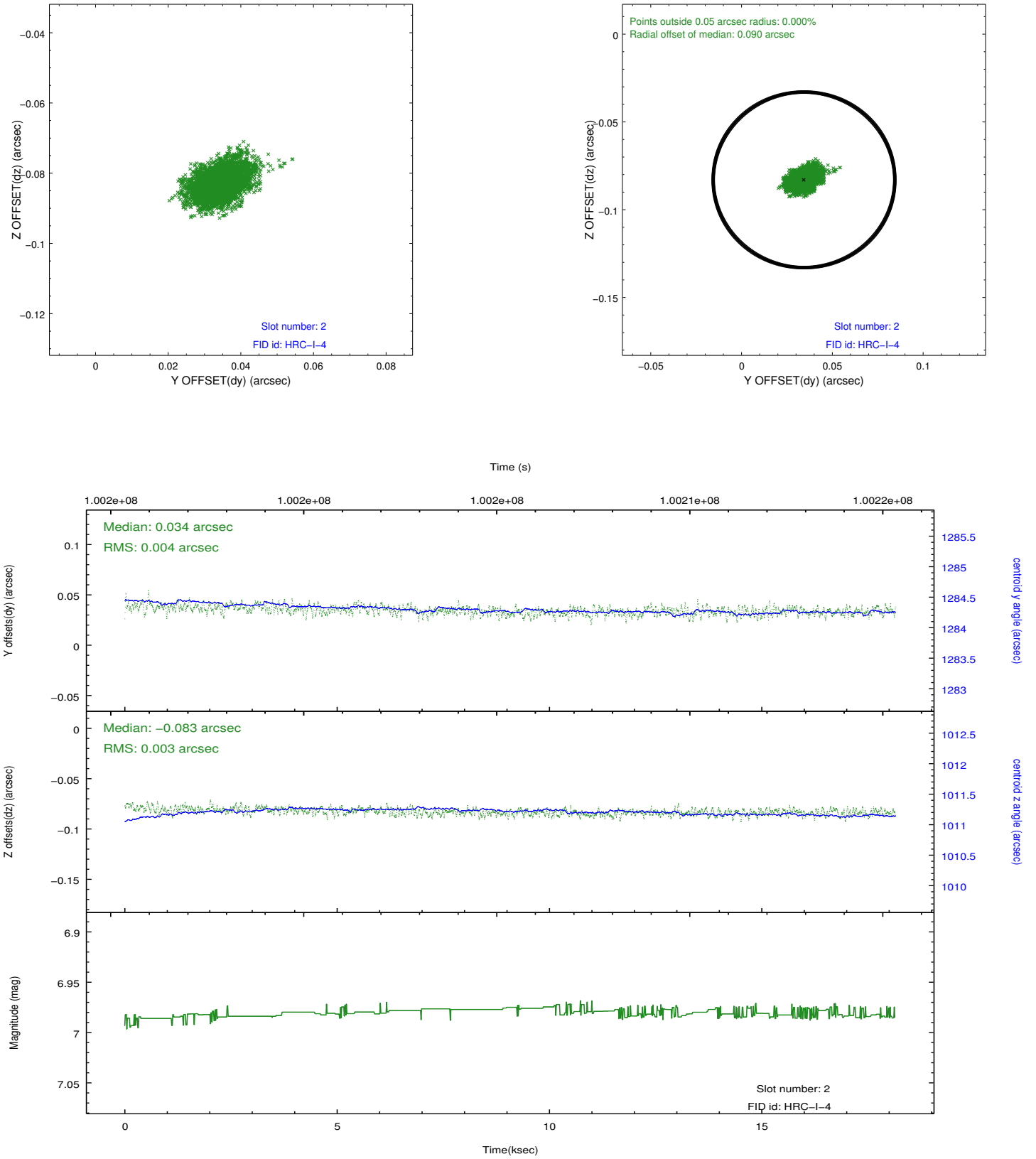
2.5.1 Slot 0



2.5.2 Slot 1



2.5.3 Slot 2



A Summary

A.1 Status

V&V Scientist	Jen Lauer
V&V Date (YYYY-MM-DD)	2012.09.17
V&V Edition	1
V&V Disposition and Status	OK
V&V Charge Time	17.866

A.2 Comments

Window constraint met.