

V&V Reference Report

L2 ASCDS Version : 7.6.10

Observation 1580 - L2 Version 001
Chandra X-Ray Center

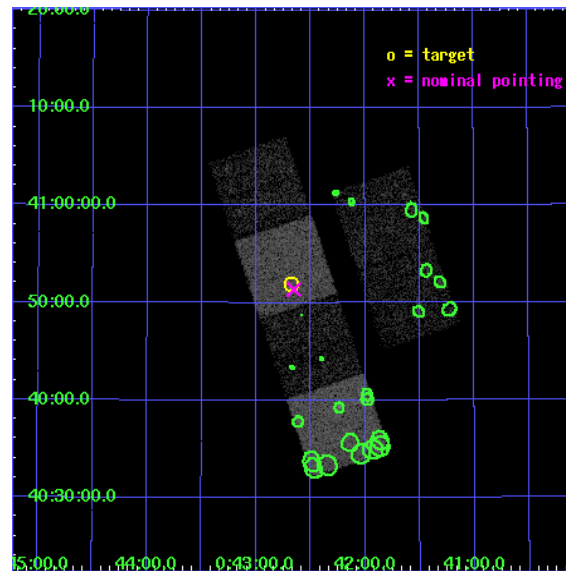
L2 Processing Date : Jun 16 2007

Contents

1	Front	2
2	OBI	3
2.1	OBI	3
2.1.1	Images	3
2.1.2	Bias	3
2.1.3	Parameters	4
2.1.4	Events	4
2.2	Compared Parameters	5
2.3	Aspect	6
2.4	Star Slots	9
2.4.1	Slot 3	9
2.4.2	Slot 4	10
2.4.3	Slot 5	11
2.4.4	Slot 6	12
2.4.5	Slot 7	13
2.5	FID Slots	14
2.5.1	Slot 0	14
2.5.2	Slot 1	15
2.5.3	Slot 2	16
3	Point Sources	17
A	Summary	18
A.1	Status	18
A.2	Comments	18

1 Front

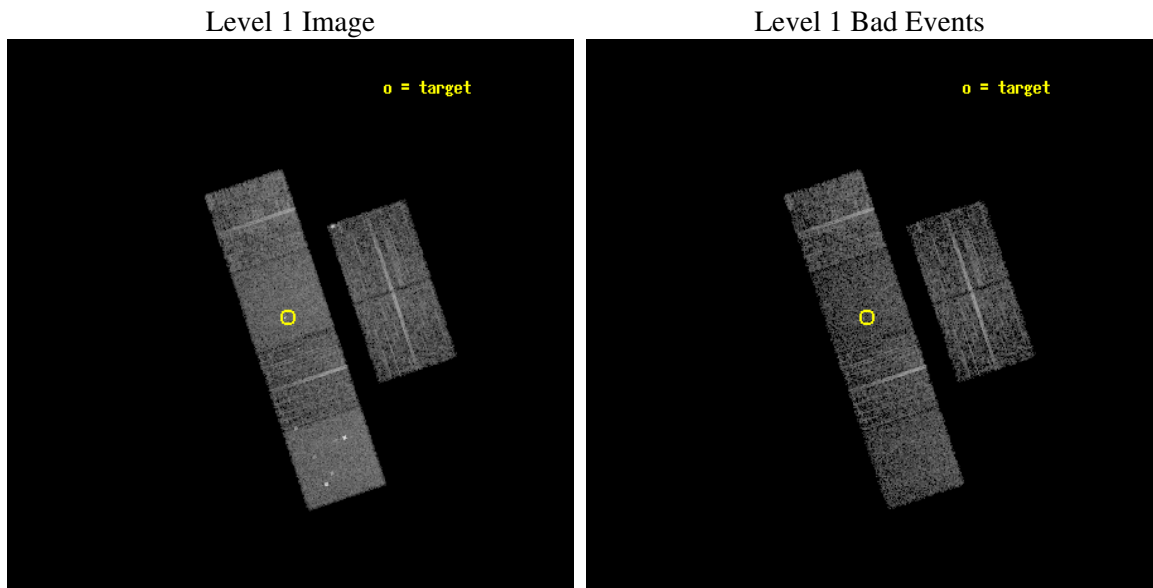
seq_num	600137
obs_id	1580
title	MONITORING THE M31 NUCLEAR REGION
observer	Dr. Stephen Murray
object	M31 NUCLEUS/TRANS
dtcycle	0
cycle	P
ra_targ	10.67
dec_targ	40.865
ra_nom	10.663794561616
dec_nom	40.856297587148
roll_nom	251.51918506685
revision	2
ontime	5129.6000047773
livetime	5064.6459208425
ontime2	5129.6000047773
ontime3	5129.6000047773
ontime5	5129.6000047773
ontime6	5129.6000047773
ontime7	5129.6000047773
ontime8	5129.6000047773
l2events	49095



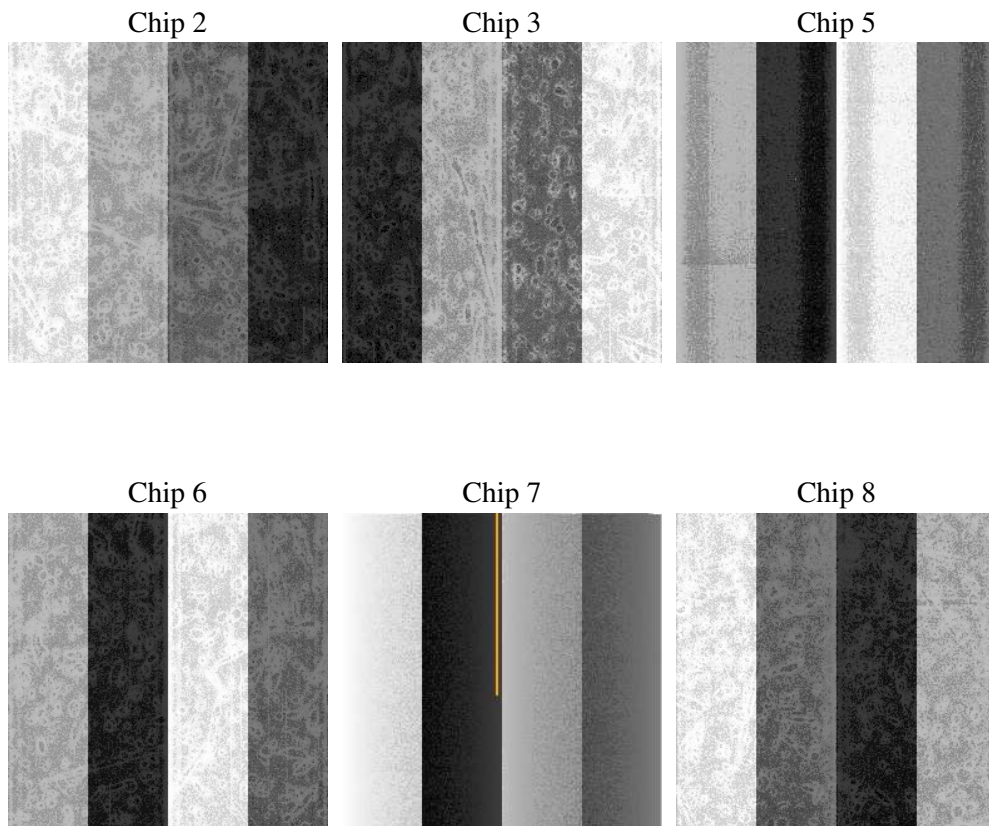
2 OBI

2.1 OBI

2.1.1 Images



2.1.2 Bias



2.1.3 Parameters

obi_num	0
ascdsver	7.6.10
caldsver	3.4.0
date	2007-06-16T14:39:07
revision	2

sched_exp_time	5000.000000
ontime	5129.6000047773
ontime2	5129.6000047773
ontime3	5129.6000047773
ontime5	5129.6000047773
ontime6	5129.6000047773
ontime7	5129.6000047773
ontime8	5129.6000047773
l1events	229027

2.1.4 Events

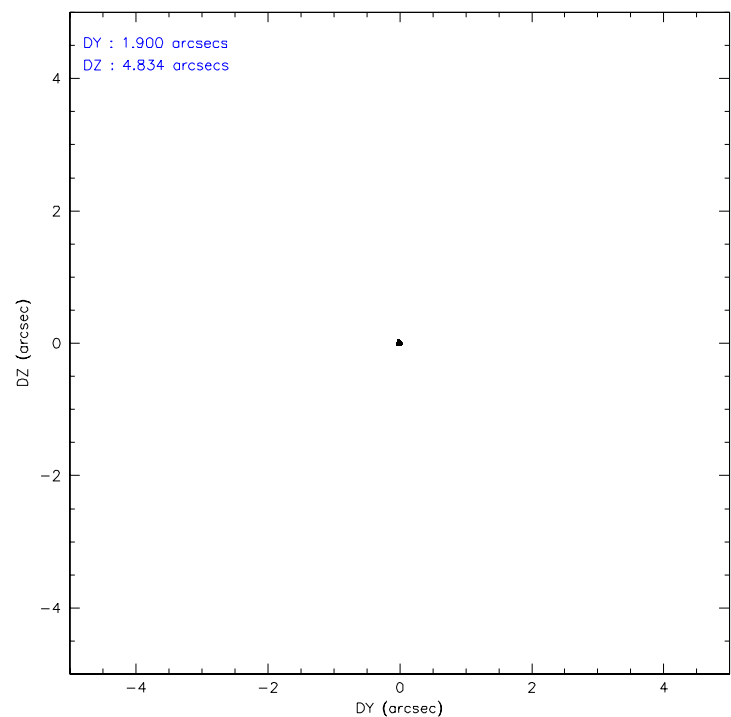
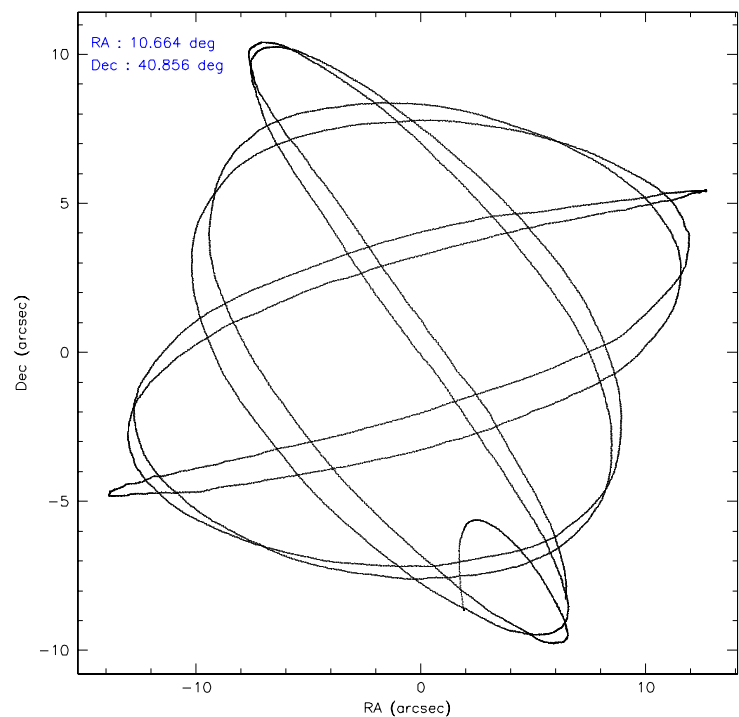
	ccd 2	ccd 3	ccd 5	ccd 6	ccd 7	ccd 8
level 1 events	32286	32227	47301	33619	42087	41507
rejected events	28756	27791	25856	29794	24875	33722
rejected %	89%	86%	54%	88%	59%	81%

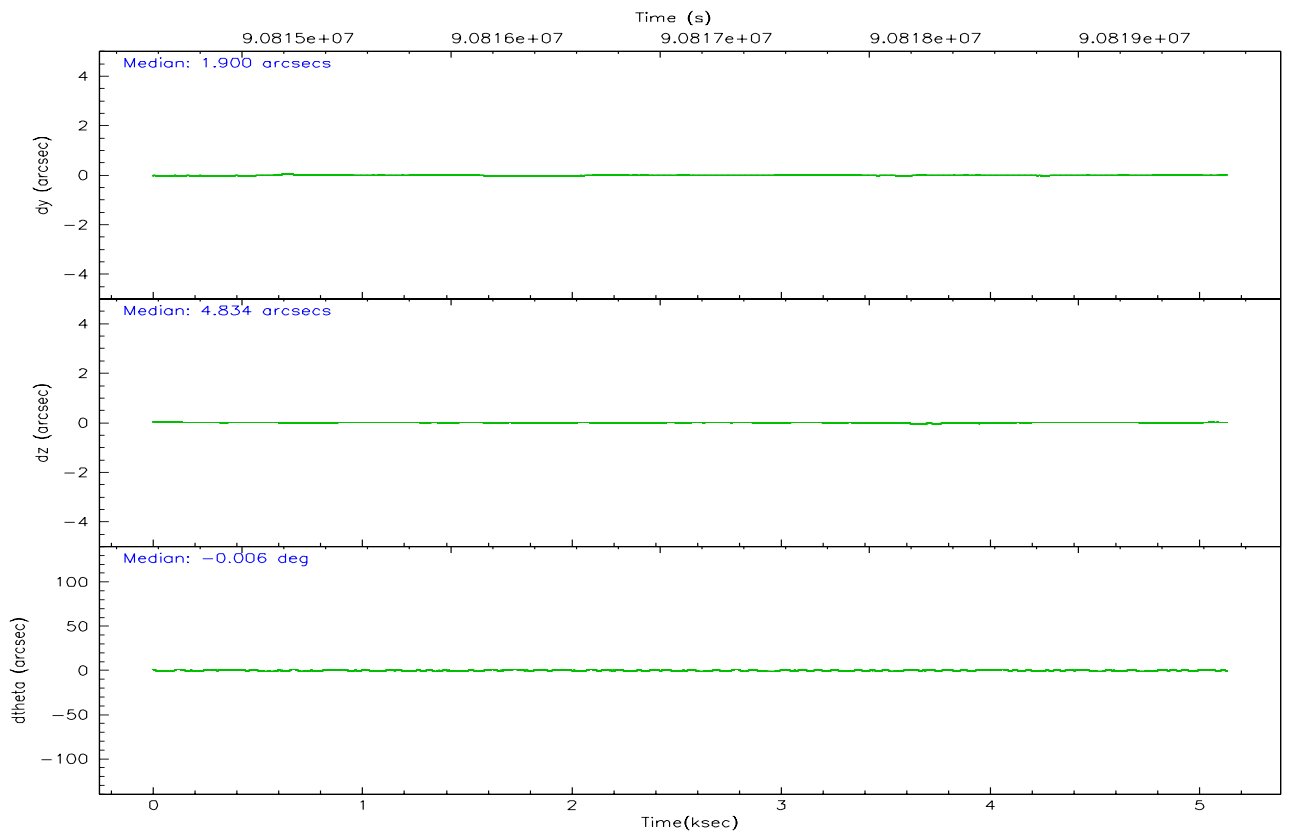
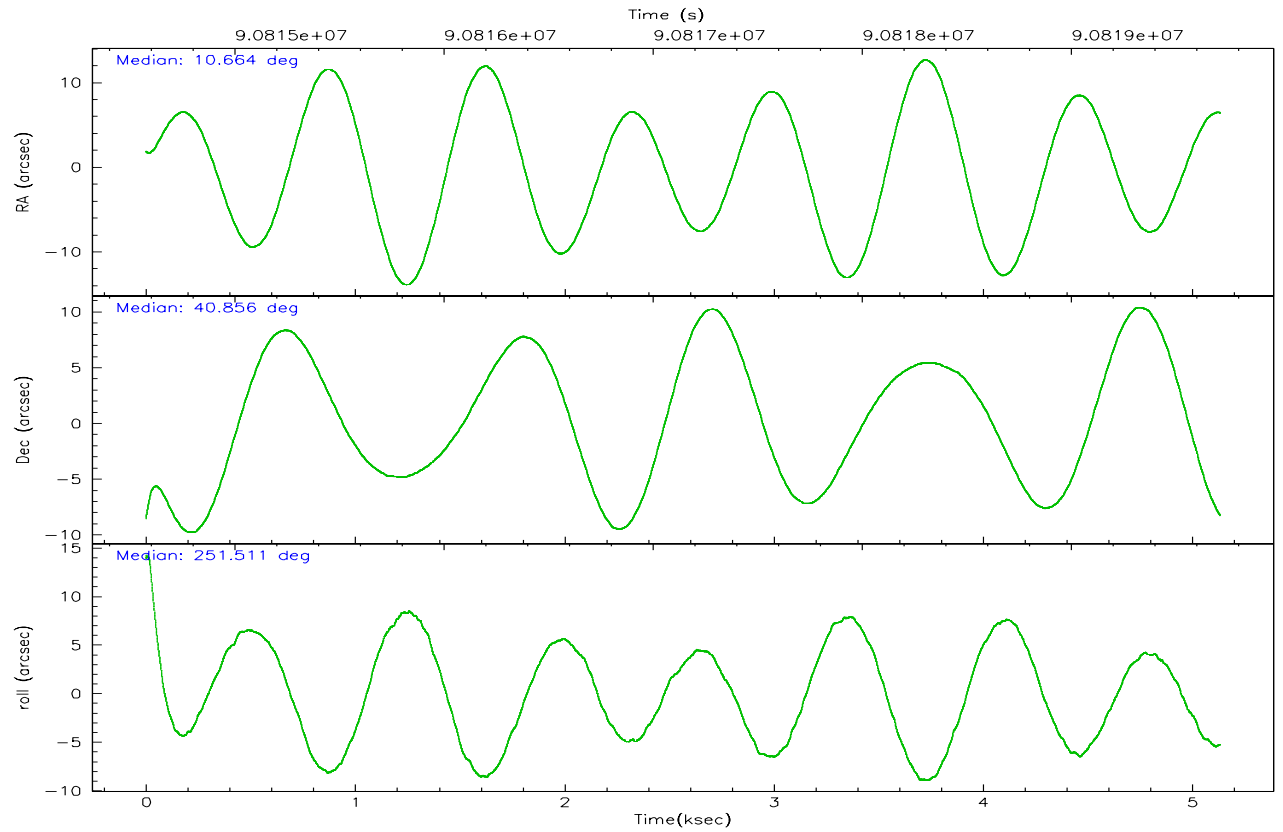
	ccd 2	ccd 3	ccd 5	ccd 6	ccd 7	ccd 8
grade 0 events	1667	2356	4122	1793	2011	2801
	5%	7%	8%	5%	4%	6%
grade 1 events	21	20	83	14	34	17
	0%	0%	0%	0%	0%	0%
grade 2 events	736	832	6313	745	3757	1844
	2%	2%	13%	2%	8%	4%
grade 3 events	353	418	973	383	1620	794
	1%	1%	2%	1%	3%	1%
grade 4 events	386	386	858	380	1724	777
	1%	1%	1%	1%	4%	1%
grade 5 events	1028	1177	3585	1282	3998	1752
	3%	3%	7%	3%	9%	4%
grade 6 events	654	676	10653	785	9242	2094
	2%	2%	22%	2%	21%	5%
grade 7 events	27441	26362	20714	28237	19701	31428
	84%	81%	43%	83%	46%	75%

2.2 Compared Parameters

Parameter	Planned	Actual	Parameter	Planned	Actual
Instrument	ACIS	ACIS	Obspar format version number	6	6
Detector	ACIS-235678	ACIS-235678	Obspar file type	PREDICTED	ACTUAL
Grating	NONE	NONE	Obspar update status	NONE	UPDATED
Data mode	FAINT	FAINT	Number of optional ACIS chips dropped	0	0
Observation mode	POINTING	POINTING	On-chip summing requested	N	N
Pointing RA	10.656219	10.66379456161642	Subarray requested	NONE	NONE
Pointing Dec	40.883112	40.85629758714772	Alternating exposures requested	N	N
Pointing Roll	251.367480	251.519185066854	Primary exposure time	0.000000	3.2
SIM focus pos (mm)	-0.684267	-0.6828225247311905			
SIM defocus (mm)	0	0.001444936568705701			
SIM translation stage pos (mm)	-190.132523	-190.1425803651734			
SIM translation stage offset (mm)	0	0.01005778216563158			
Observation start time	90814708.184000	90813489.202925			
Observation start date	2000-11-17T02:17:24	2000-11-17T01:58:09			
Observation end time	90819708.184000	90819899.04066899			
Observation end date	2000-11-17T03:40:44	2000-11-17T03:44:59			
Read mode	TIMED	TIMED			

2.3 Aspect



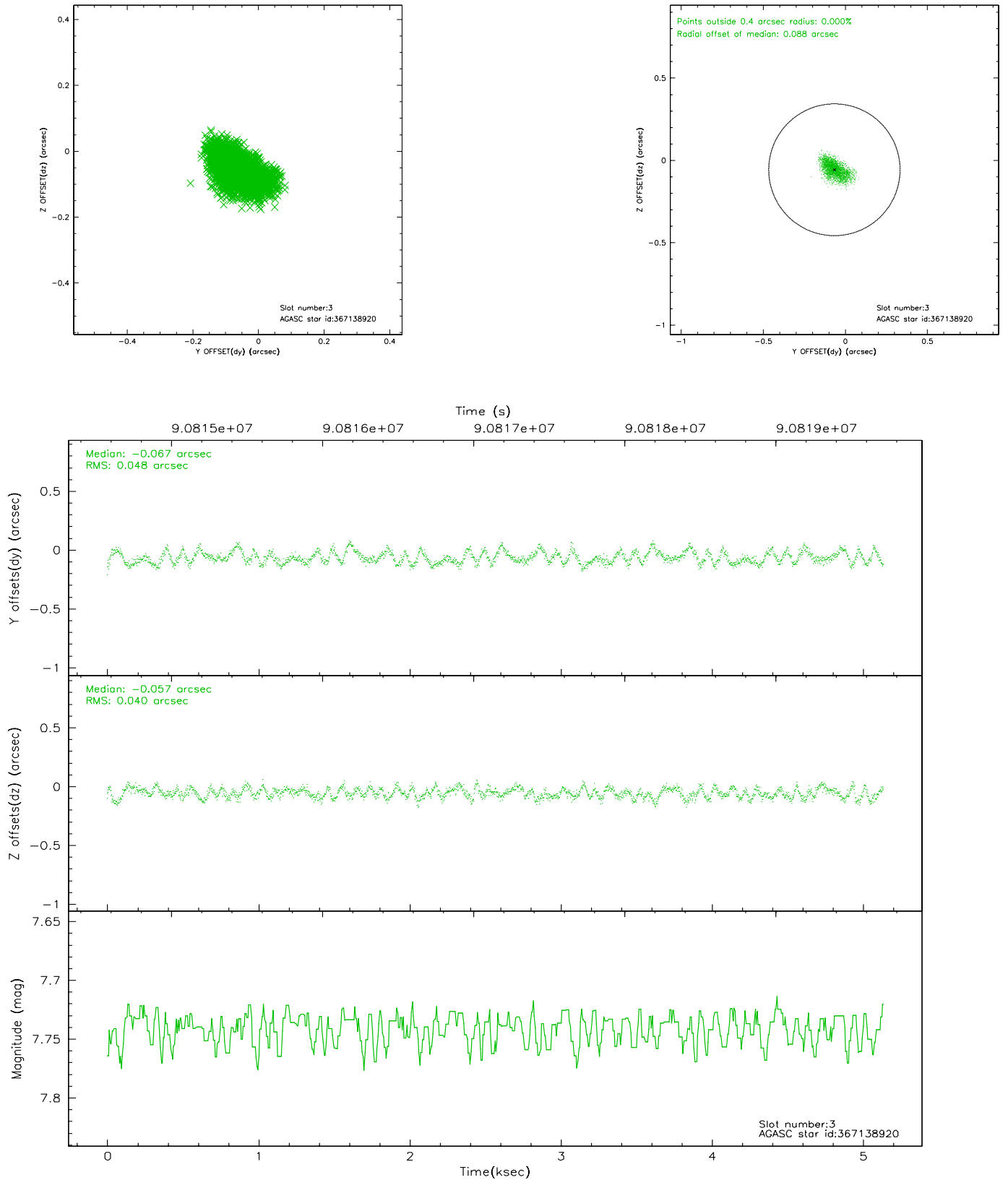


Slot Statistics

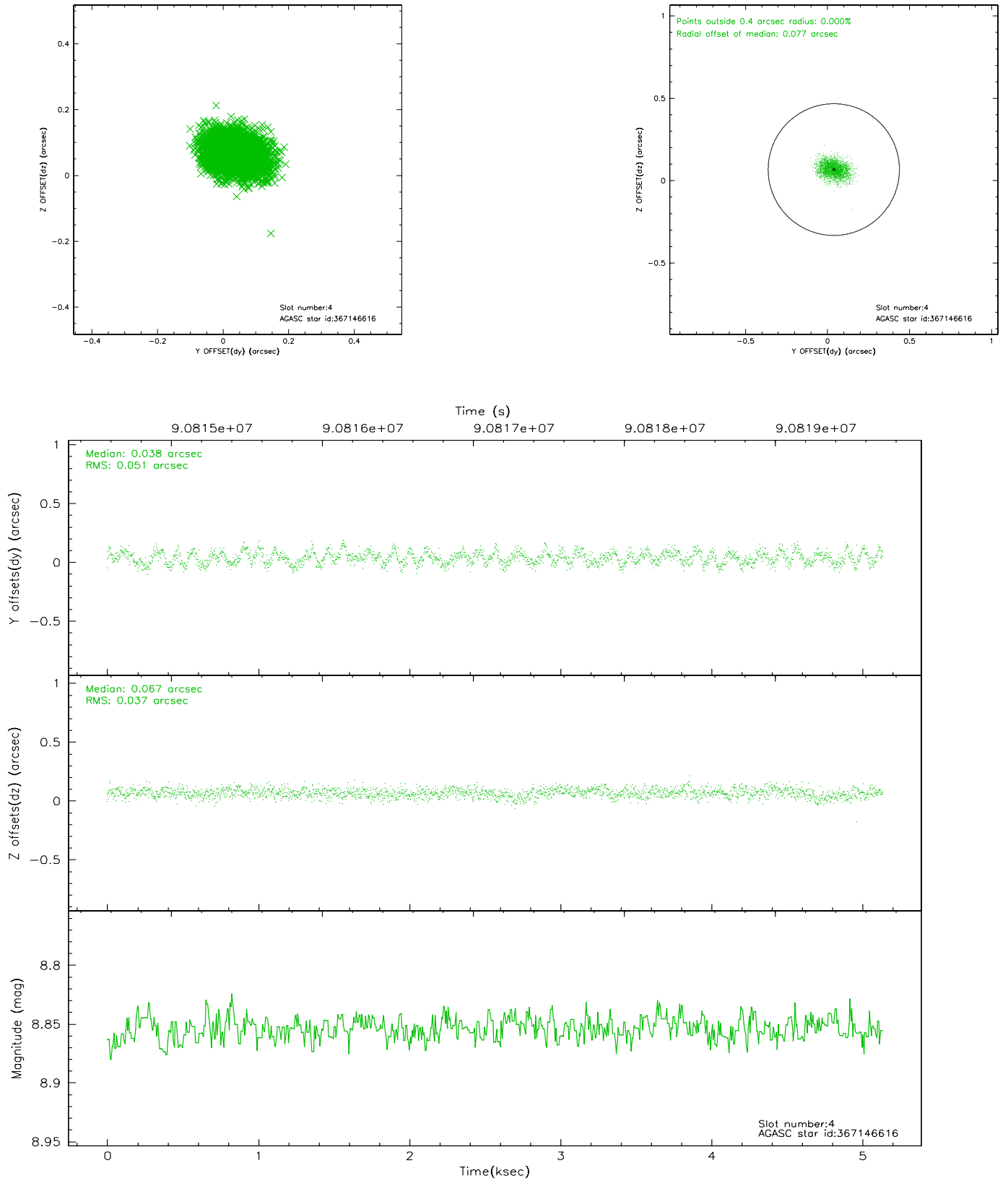
slot	status	id	mag	n_pts	med_dy	med_dz	dr1	dr2	ra	dec	mean_y	mean_z
0	FID	ACIS-S-1	6.94	1253	-0.030	0.050	0.006	0.010	0.000000	0.000000	941.52	-1721.46
1	FID	ACIS-S-5	6.99	1253	0.035	0.001	0.006	0.009	0.000000	0.000000	-1806.77	174.81
2	FID	ACIS-S-6	7.11	1253	-0.026	-0.039	0.006	0.010	0.000000	0.000000	405.78	820.09
3	GUIDE	367138920	7.74	2506	-0.067	-0.057	0.069	0.109	11.513485	40.808909	-503.80	2294.67
4	GUIDE	367146616	8.85	2505	0.038	0.067	0.068	0.108	11.418645	41.190163	-1715.74	1601.53
5	GUIDE	367139768	7.98	2505	-0.084	0.027	0.056	0.088	11.069715	40.685175	311.71	1296.75
6	GUIDE	367148872	7.21	2505	0.074	0.064	0.057	0.086	10.505940	40.688258	796.31	-164.44
7	GUIDE	365439720	8.50	2504	0.037	-0.105	0.065	0.110	9.704623	40.431022	2363.25	-1955.80

2.4 Star Slots

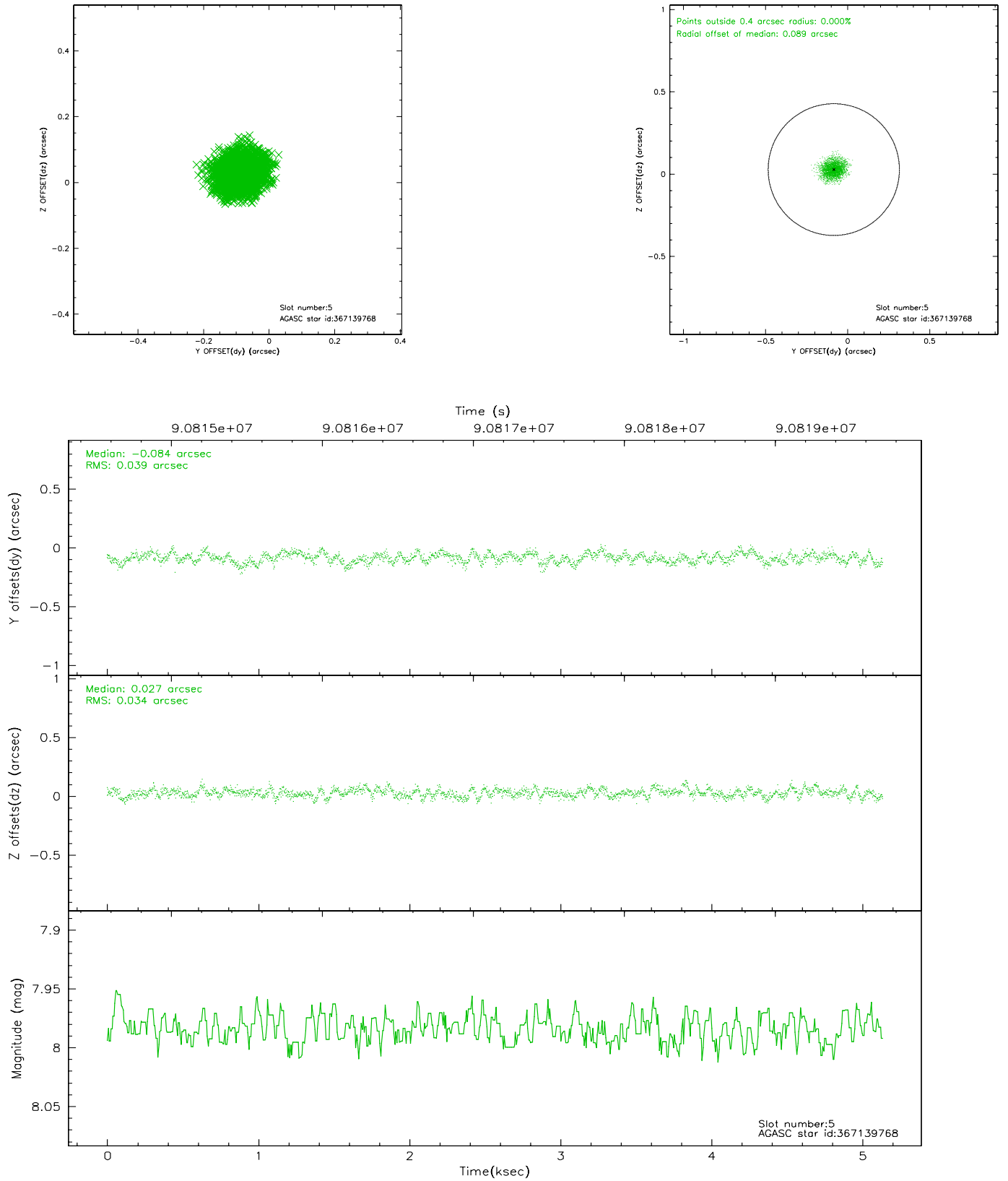
2.4.1 Slot 3



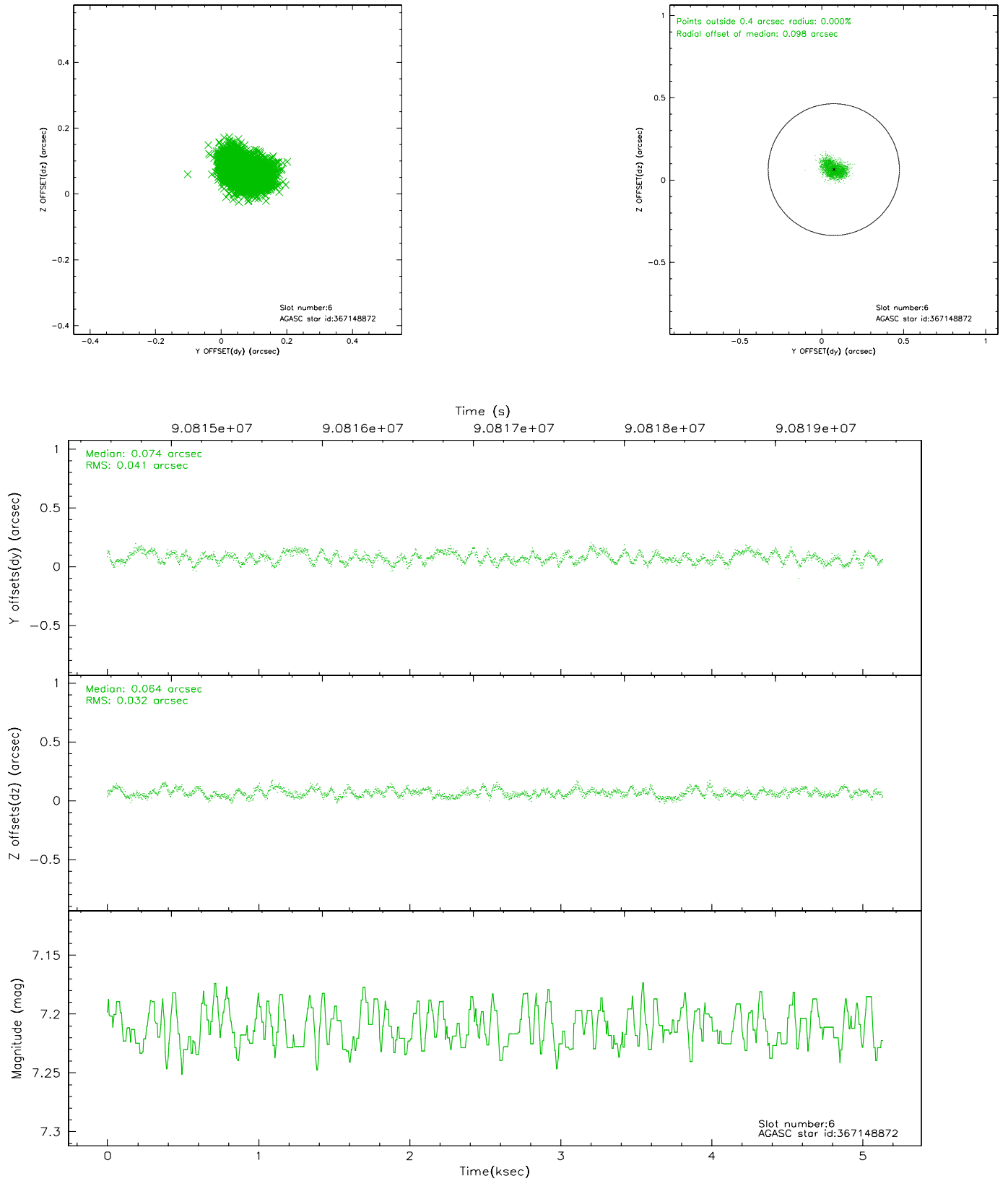
2.4.2 Slot 4



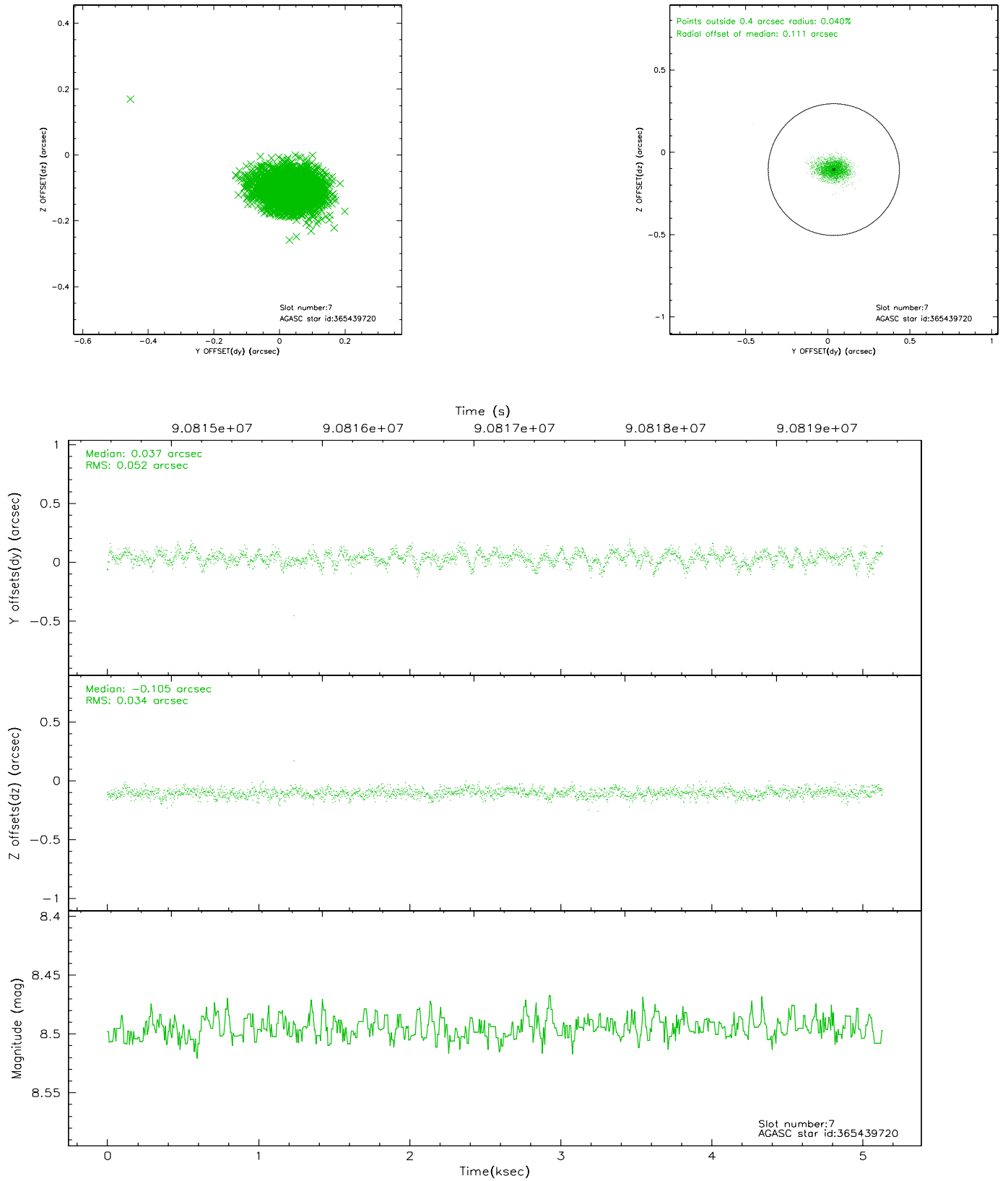
2.4.3 Slot 5



2.4.4 Slot 6

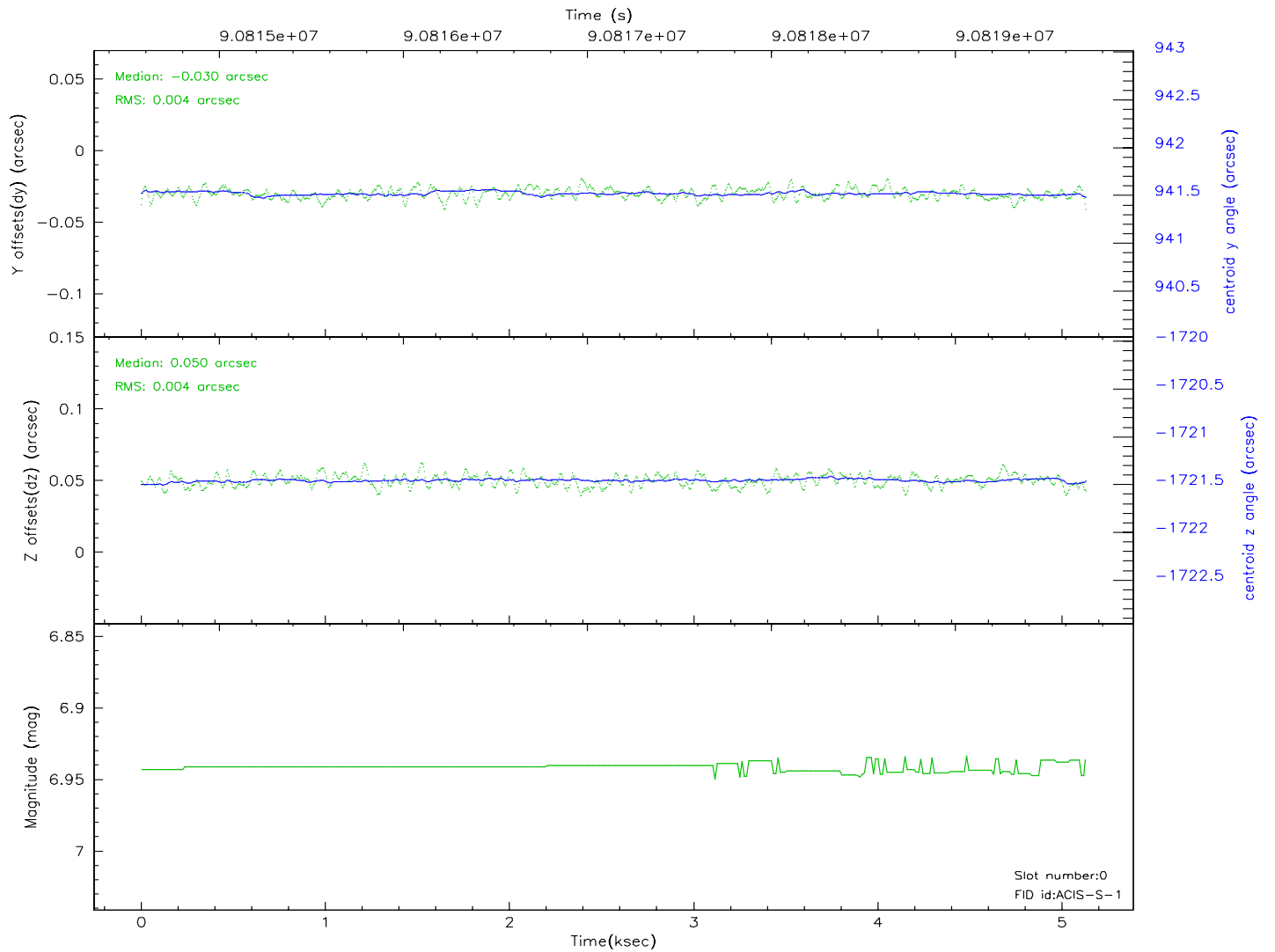
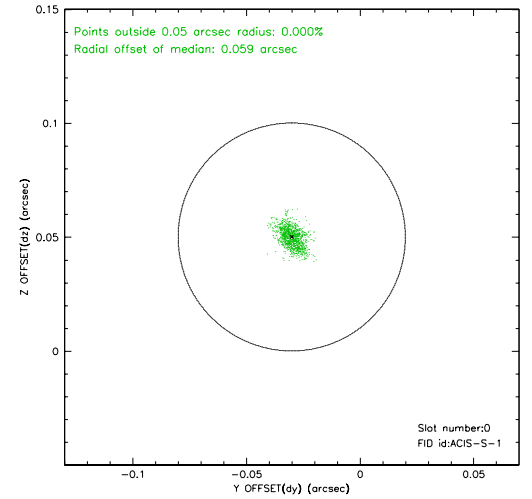
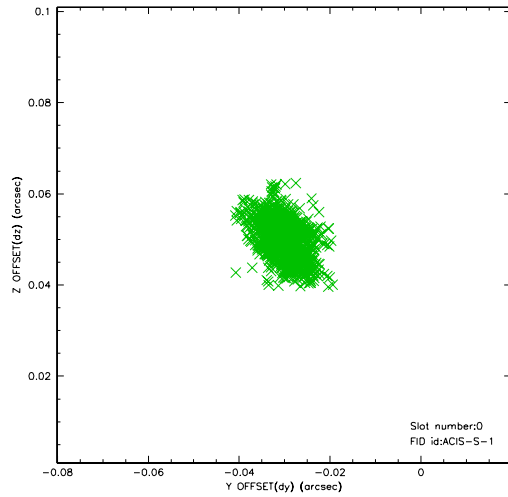


2.4.5 Slot 7

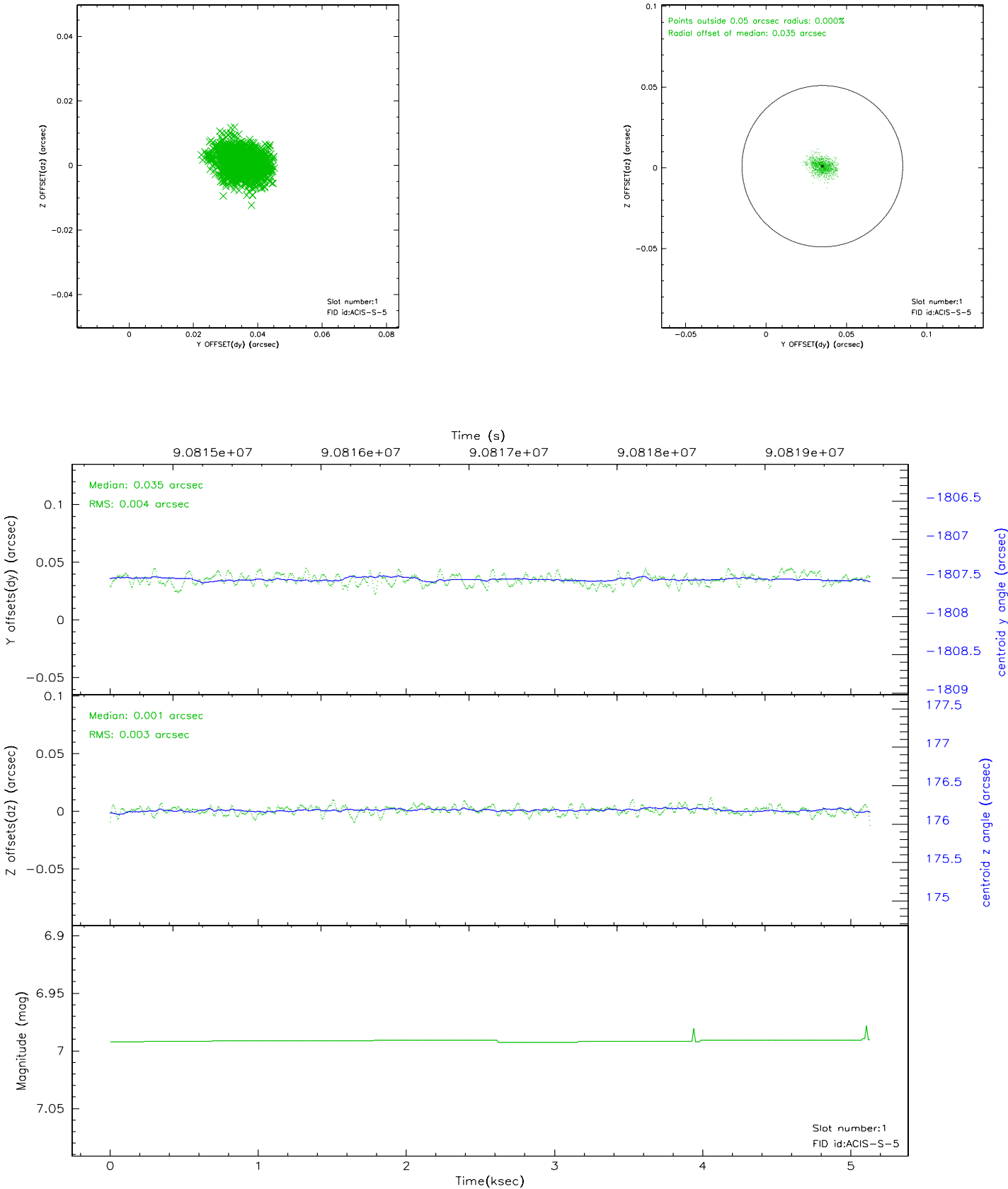


2.5 FID Slots

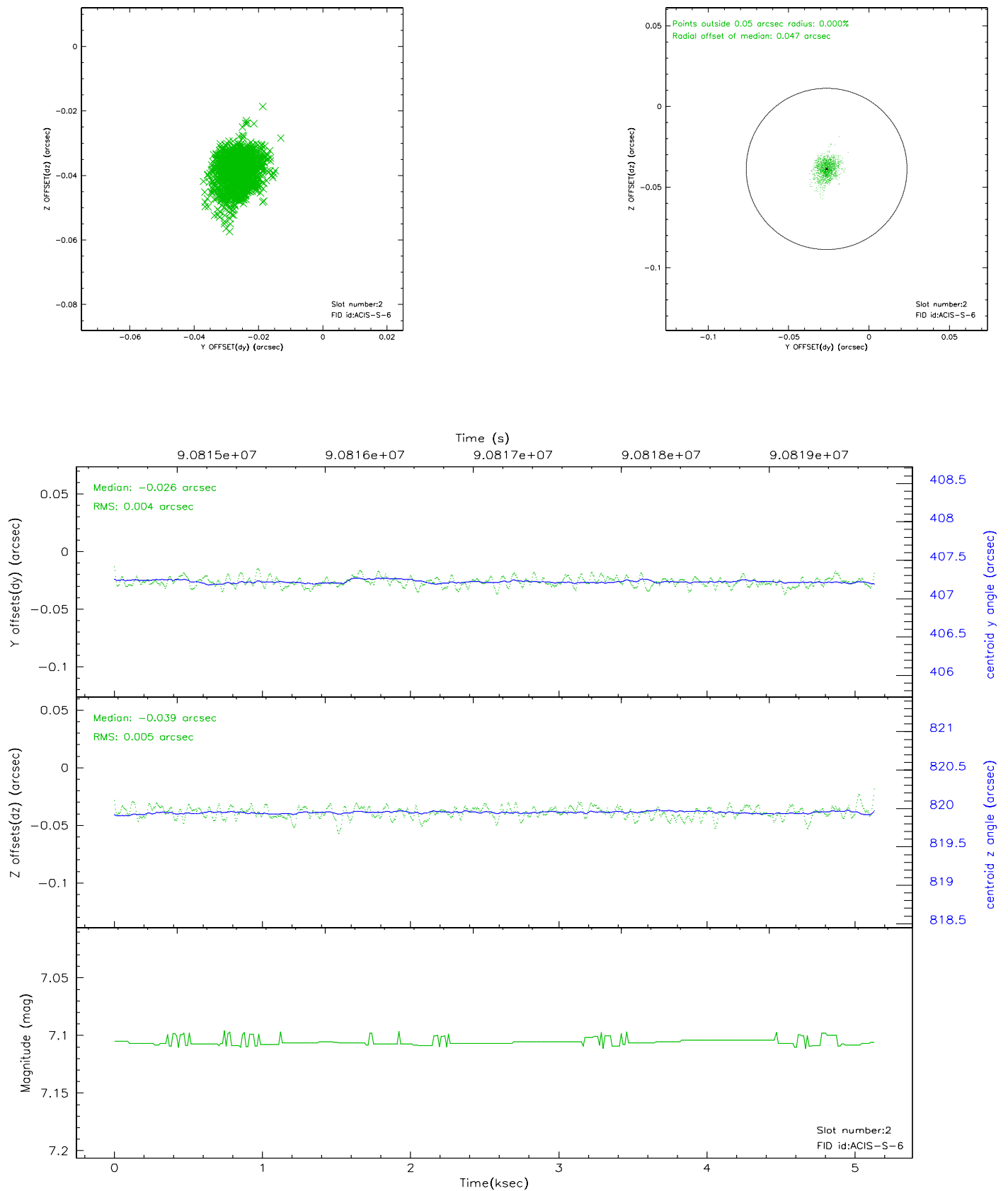
2.5.1 Slot 0



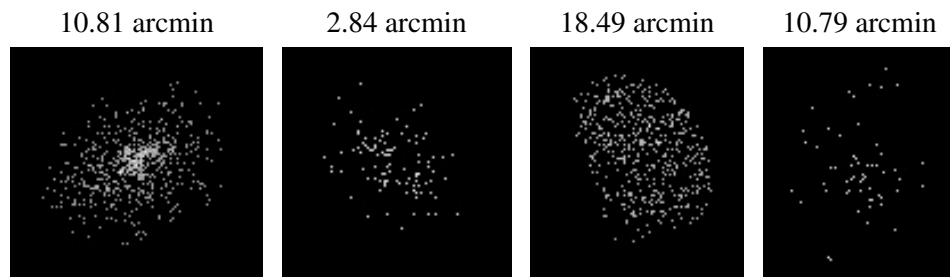
2.5.2 Slot 1



2.5.3 Slot 2



3 Point Sources



A Summary

A.1 Status

V&V Scientist	Jen Lauer
V&V Date (YYYY-MM-DD)	2007.06.18
V&V Edition	1
V&V Disposition and Status	OK
V&V Charge Time	5.129

A.2 Comments

Window constraint not met, missed window by two days, but science not impacted. CDO states that it does not need to be reobserved.

Window: Nov 1 2000 12:00AM to Nov 14 2000 12:00AM
actual: Nov 17 2000