

V&V Reference Report

L2 ASCDS Version : 8.5.1.1

Observation 15490 - L2 Version 2
Chandra X-Ray Center

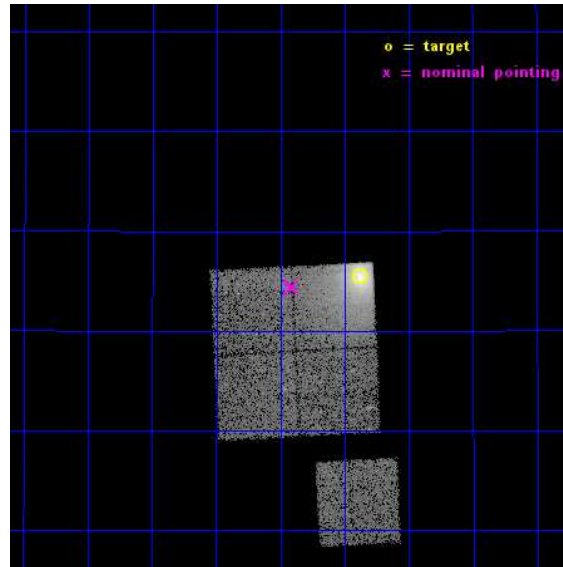
L2 Processing Date : Dec 2 2014

Contents

1	Front	2
2	OBI	3
2.1	OBI	3
2.1.1	Images	3
2.1.2	Bias	3
2.1.3	Parameters	4
2.1.4	Events	4
2.2	Compared Parameters	5
2.3	Aspect	6
2.4	Star Slots	9
2.4.1	Slot 3	9
2.4.2	Slot 4	10
2.4.3	Slot 5	11
2.4.4	Slot 6	12
2.4.5	Slot 7	13
2.5	FID Slots	14
2.5.1	Slot 0	14
2.5.2	Slot 1	15
2.5.3	Slot 2	16
A	Summary	17
A.1	Status	17
A.2	Comments	17

1 Front

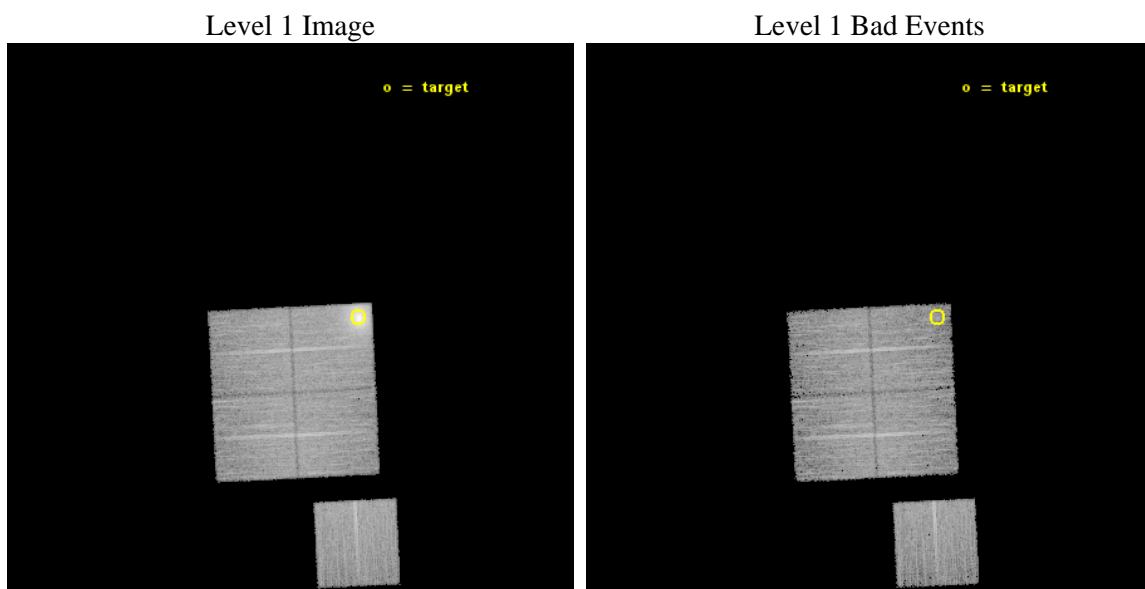
seq_num	890076	Sequence number
obs_id	15490	Observation id
title	AO-14 Calibration Observations of A1795	Proposal title
observer	Dr. CXC Calibration	Principal investigator
object	A1795	Source name
dtcycle	0	
cycle	P	events from which exps? Prim/Second/Both
ra_targ	207.219583	Observer's specified target RA [deg]
dec_targ	26.590833	Observer's specified target Dec [deg]
ra_nom	207.3536147106	Nominal RA [deg]
dec_nom	26.572955185044	Nominal Dec [deg]
roll_nom	177.17822821092	Nominal Roll [deg]
revision	2	Processing version of data
ontime	15084.540753305	Sum of GTIs [s]
livetime	14887.450123286	Livetime [s]
ontime0	15084.540753305	Sum of GTIs [s]
ontime1	15081.440802932	Sum of GTIs [s]
ontime2	15084.600116014	Sum of GTIs [s]
ontime3	15081.459095776	Sum of GTIs [s]
ontime6	15078.217752695	Sum of GTIs [s]
l2events	94374	Number of level 2 events



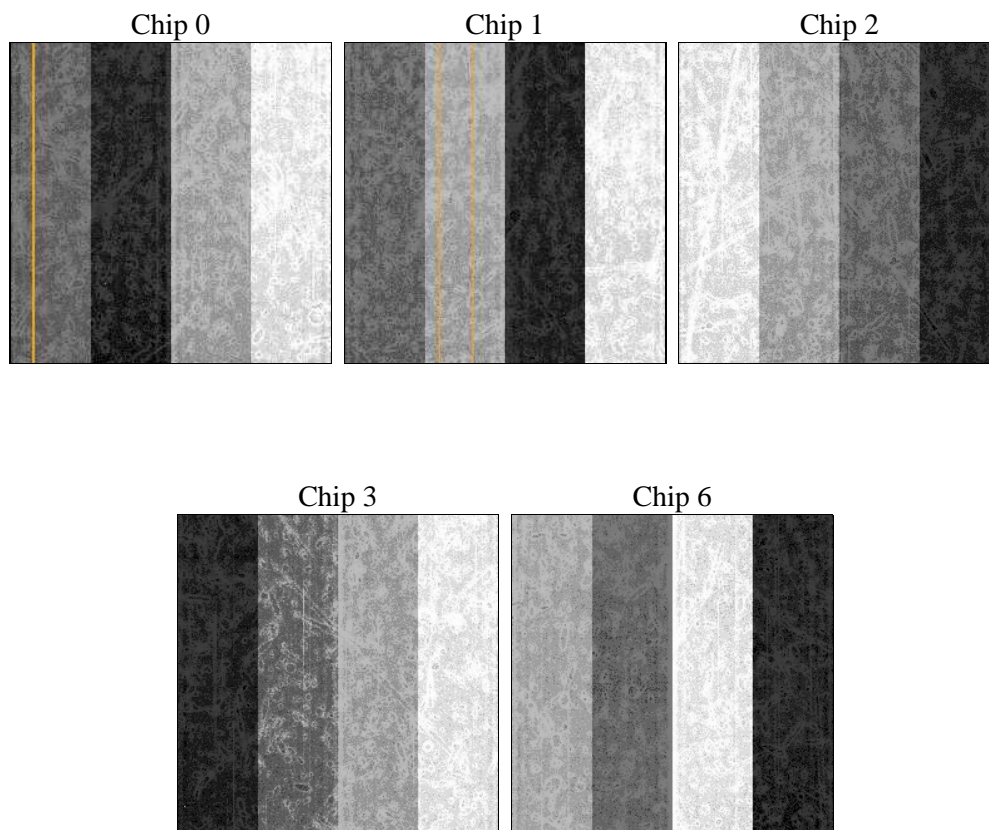
2 OBI

2.1 OBI

2.1.1 Images



2.1.2 Bias



2.1.3 Parameters

obi_num	0	Obi number	sched_exp_time	15000.000000	[s] Scheduled observation exposure time
ascdsver	10.3	Processing system revision	ontime	15084.540753305	Sum of GTIs [s]
caldsver	4.6.4	 	ontime0	15084.540753305	Sum of GTIs [s]
date	2014-12-02T18:27:39	Date and time of file creation	ontime1	15081.440802932	Sum of GTIs [s]
revision	2	Processing version of data	ontime2	15084.600116014	Sum of GTIs [s]
			ontime3	15081.459095776	Sum of GTIs [s]
			ontime6	15078.217752695	Sum of GTIs [s]
			l1events	436282	Number of level 1 events

2.1.4 Events

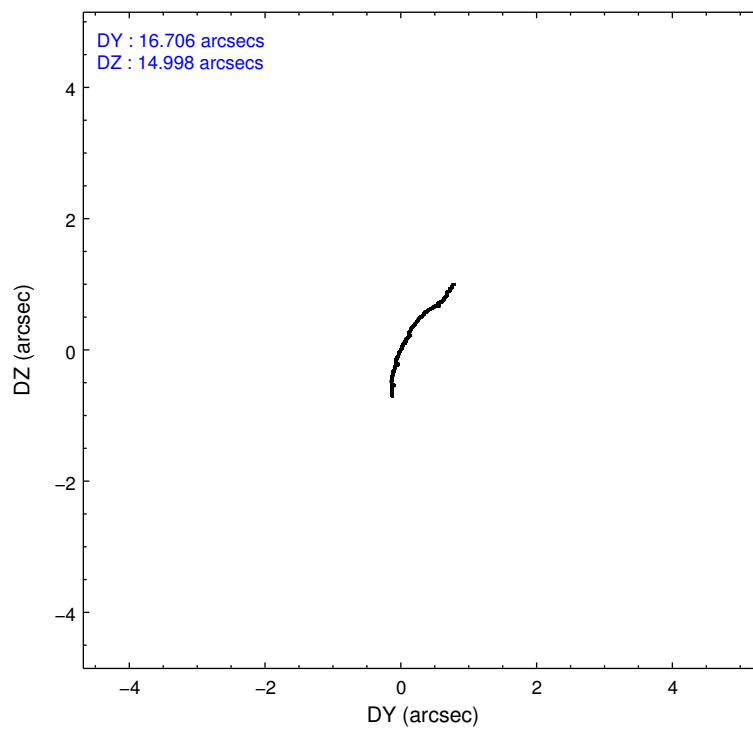
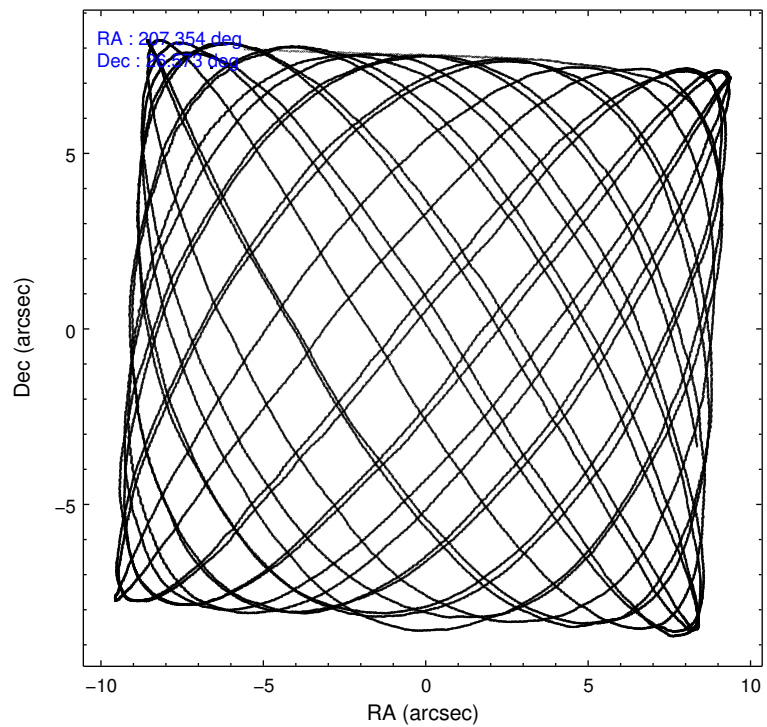
	ccd 0	ccd 1	ccd 2	ccd 3	ccd 6
level 1 events	129448	74692	78692	75684	77766
rejected events	63145	63413	68670	66684	68565
rejected %	48%	84%	87%	88%	88%

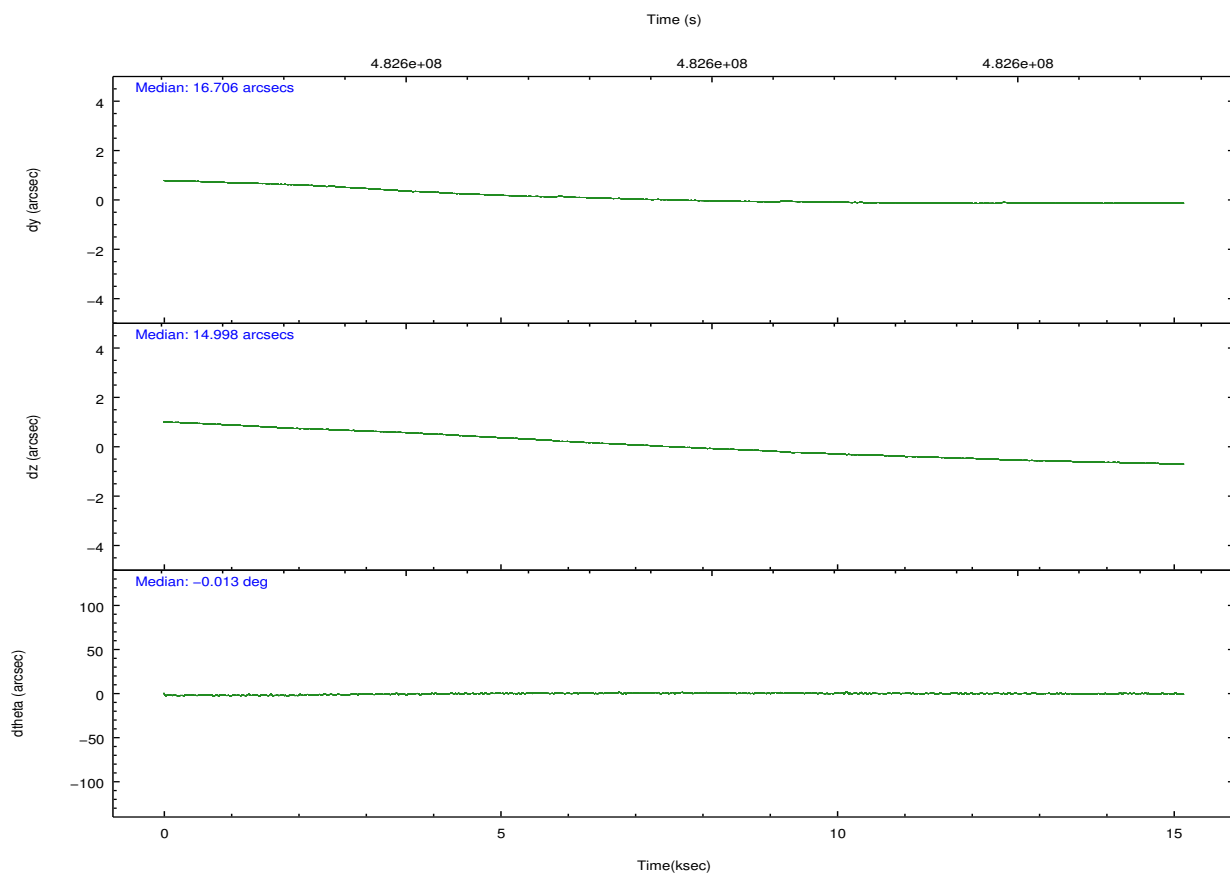
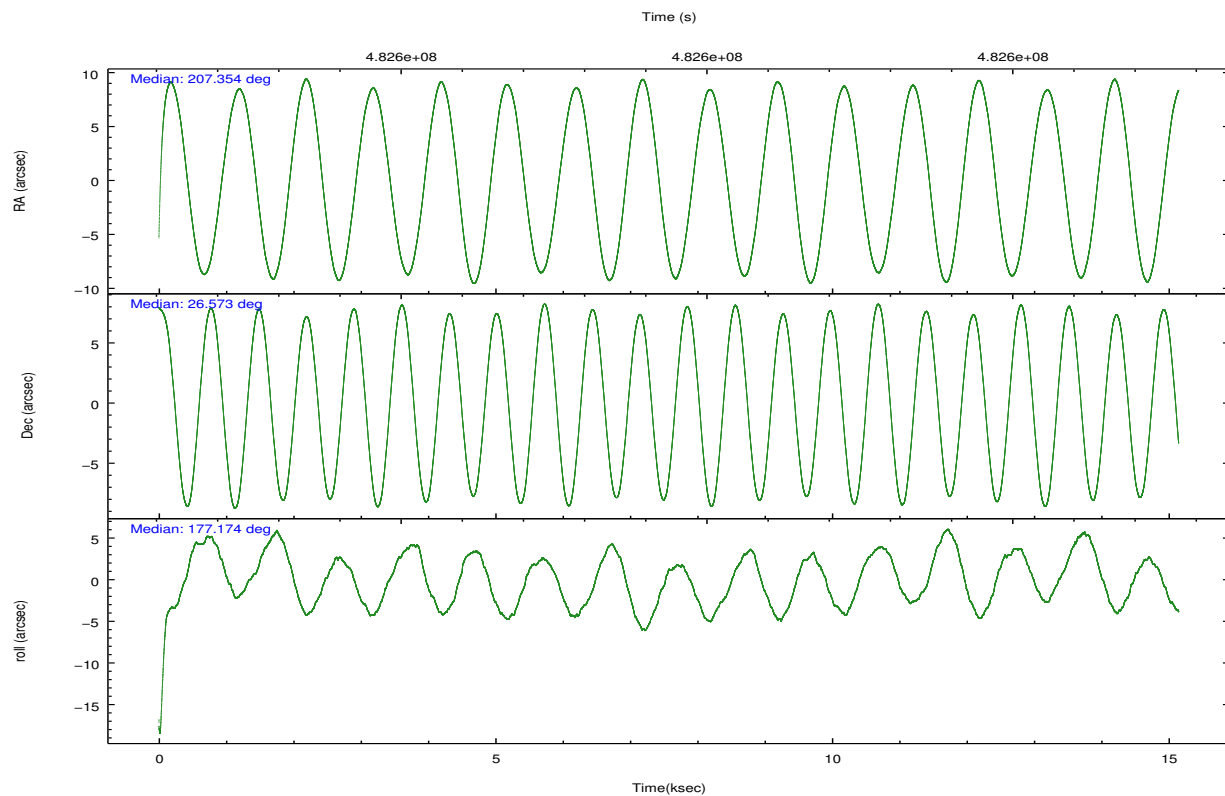
	ccd 0	ccd 1	ccd 2	ccd 3	ccd 6
grade 0 events	48477	4343	4100	3304	3046
	37%	5%	5%	4%	3%
grade 1 events	207	53	52	55	36
	0%	0%	0%	0%	0%
grade 2 events	8439	2622	2336	1982	2035
	6%	3%	2%	2%	2%
grade 3 events	2884	1048	967	955	1001
	2%	1%	1%	1%	1%
grade 4 events	2870	1116	918	917	942
	2%	1%	1%	1%	1%
grade 5 events	3714	3963	3351	4127	3997
	2%	5%	4%	5%	5%
grade 6 events	3668	2157	1707	1845	2179
	2%	2%	2%	2%	2%
grade 7 events	59189	59390	65261	62499	64530
	45%	79%	82%	82%	82%

2.2 Compared Parameters

Parameter	Planned	Actual	Parameter	Planned	Actual
Instrument	ACIS	ACIS	Obspar format version number	7	7
Detector	ACIS-01236	ACIS-01236	Obspar file type	PREDICTED	ACTUAL
Grating	NONE	NONE	Obspar update status	NONE	UPDATED
Data mode	VFAINT	VFAINT	Number of optional ACIS chips dropped	0	0
Observation mode	POINTING	POINTING	On-chip summing requested	N	N
[deg] Pointing RA	207.380900	207.3536147105989	Subarray requested	NONE	NONE
[deg] Pointing Dec	26.585597	26.57295518504356	Alternating exposures requested	N	N
[deg] Pointing Roll	176.957344	177.1782282109178	[s] Primary exposure time	0.000000	3.1
[mm] SIM focus pos	-0.782348	-0.7809083437167272			
[mm] SIM defocus	0	0.001439871863259334			
[mm] SIM translation stage pos	-254.359963	-254.3657361129205			
[mm] SIM translation stage offset	20.7675	20.77328310999084			
[s] Observation start time (MET)	482591948.184000	482590719.06366			
Observation start date	2013-04-17T13:18:01	2013-04-17T12:58:39			
[s] Observation end time (MET)	482606948.184000	482607856.55209			
Observation end date	2013-04-17T17:28:01	2013-04-17T17:44:16			
Read mode	TIMED	TIMED			

2.3 Aspect



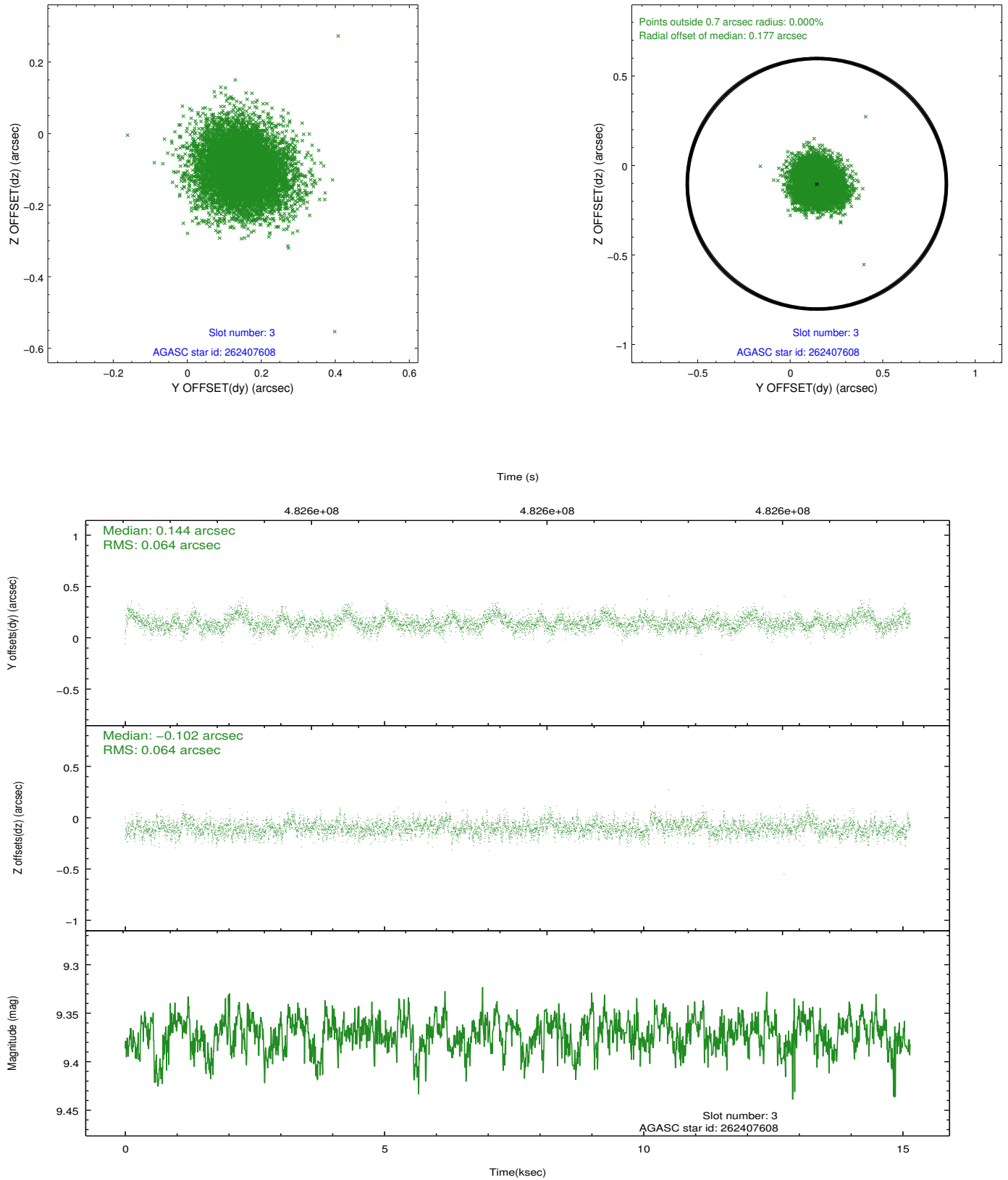


Slot Statistics

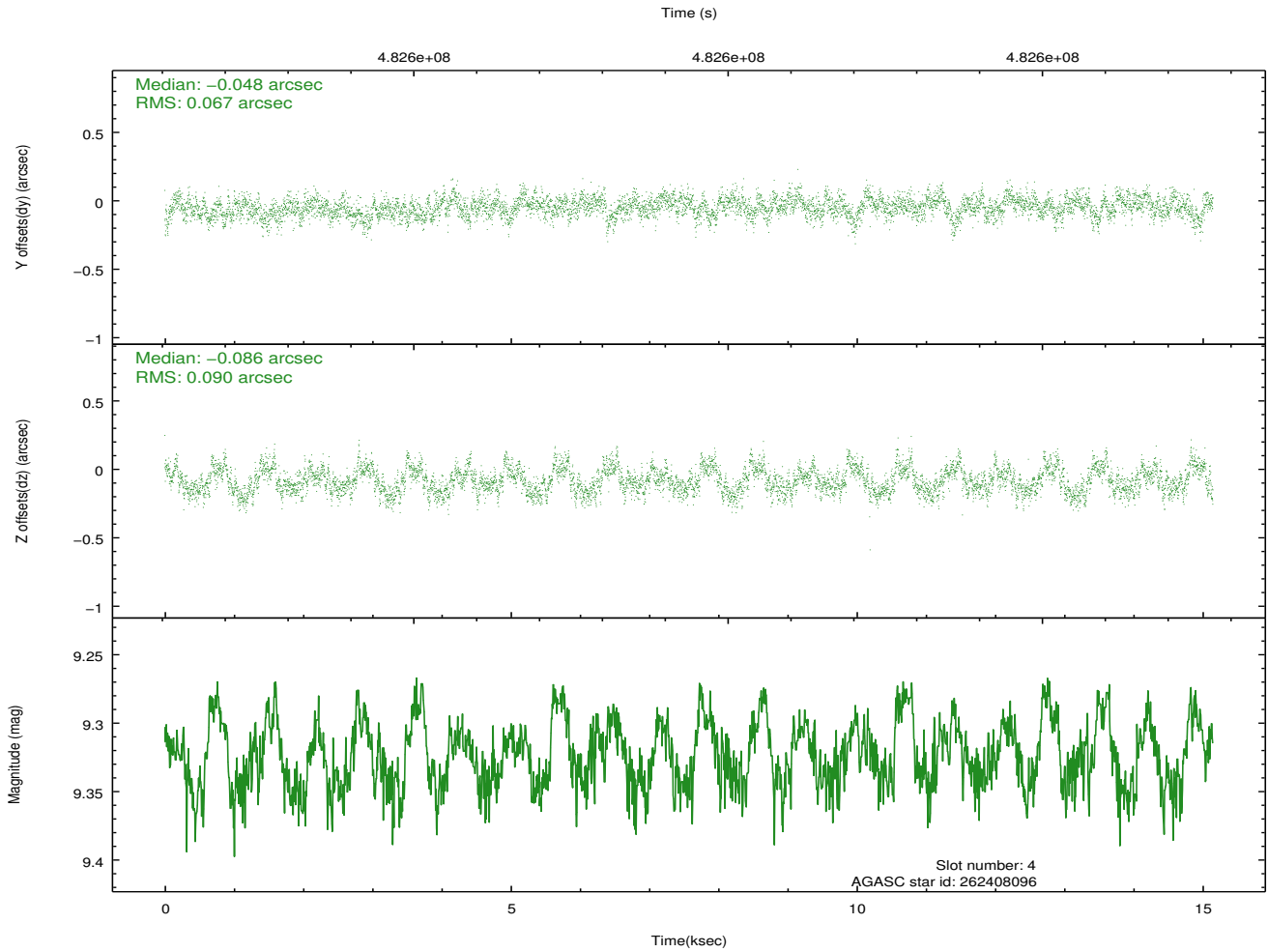
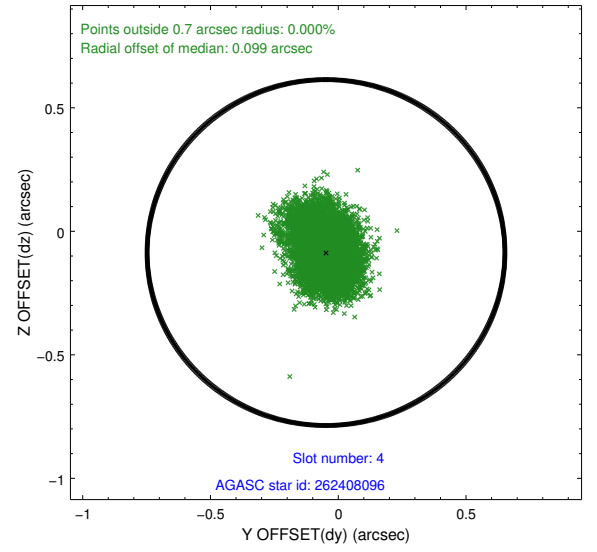
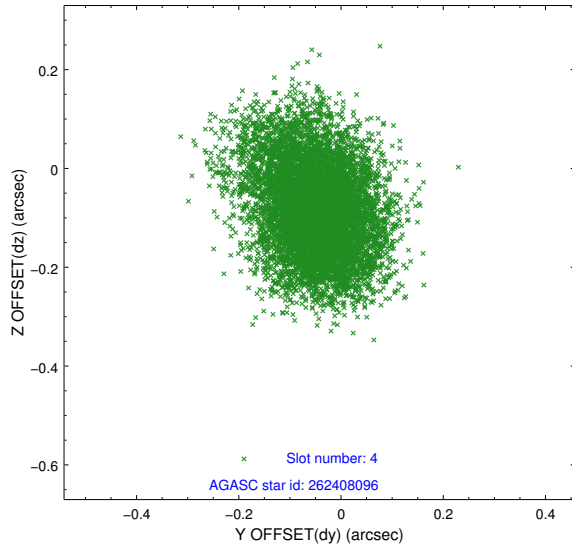
slot	status	used	id	mag	n_pts	med_dy	med_dz	dr1	dr2	ra	dec	mean_y	mean_z
0	FID		ACIS-I-2	7.08	3695	0.006	-0.510	0.044	0.058	0.000000	0.000000	-770.10	-420.90
1	FID		ACIS-I-4	7.07	3695	0.117	0.143	0.017	0.036	0.000000	0.000000	2143.55	1486.46
2	FID		ACIS-I-5	7.08	3695	-0.222	0.435	0.031	0.043	0.000000	0.000000	-1825.17	1486.20
3	GUIDE	used	262407608	9.37	7381	0.144	-0.102	0.096	0.156	207.378401	26.435507	-20.41	540.26
4	GUIDE	used	262408096	9.32	7384	-0.048	-0.086	0.120	0.195	207.011678	26.515421	1175.08	313.91
5	GUIDE	used	262408512	8.00	7389	0.001	0.051	0.093	0.146	207.800210	27.128796	-1237.09	-2025.99
6	GUIDE	used	262408936	9.61	7376	0.008	0.120	0.183	0.295	207.154731	26.726554	753.09	-468.41
7	GUIDE	used	262414456	9.28	7376	-0.106	0.016	0.109	0.174	208.043290	26.129682	-2224.68	1520.23

2.4 Star Slots

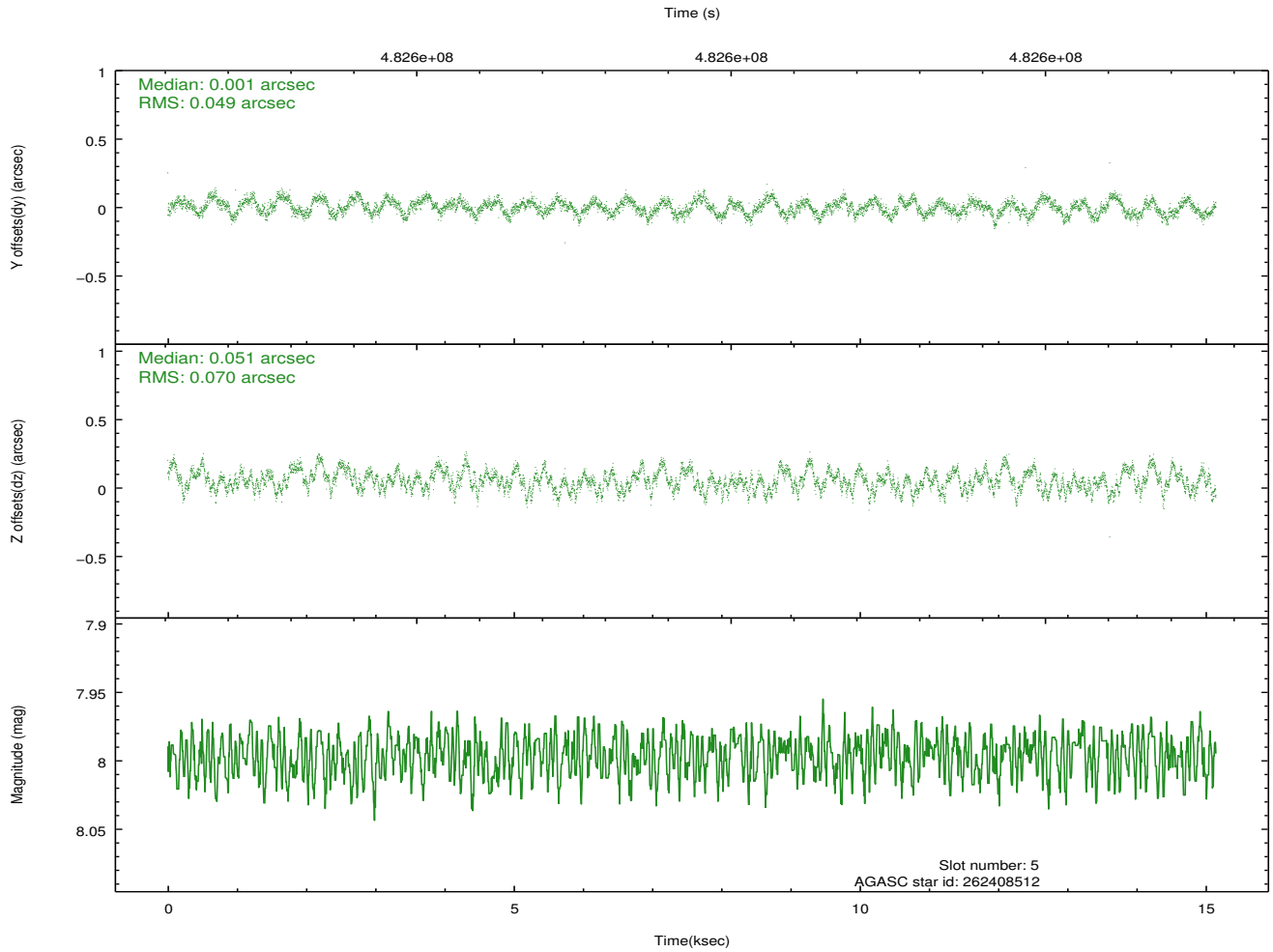
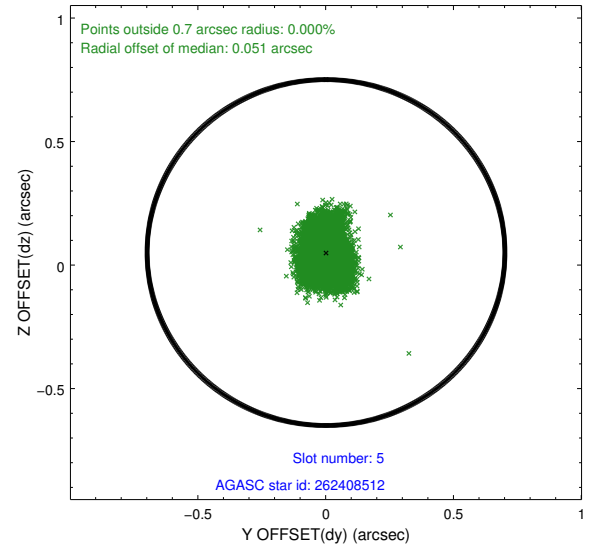
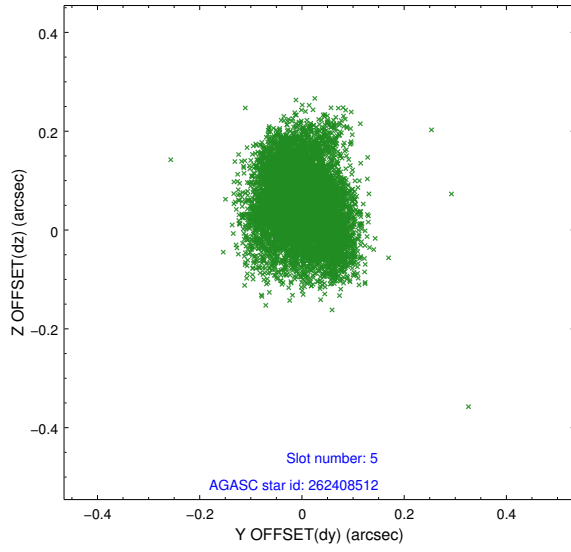
2.4.1 Slot 3



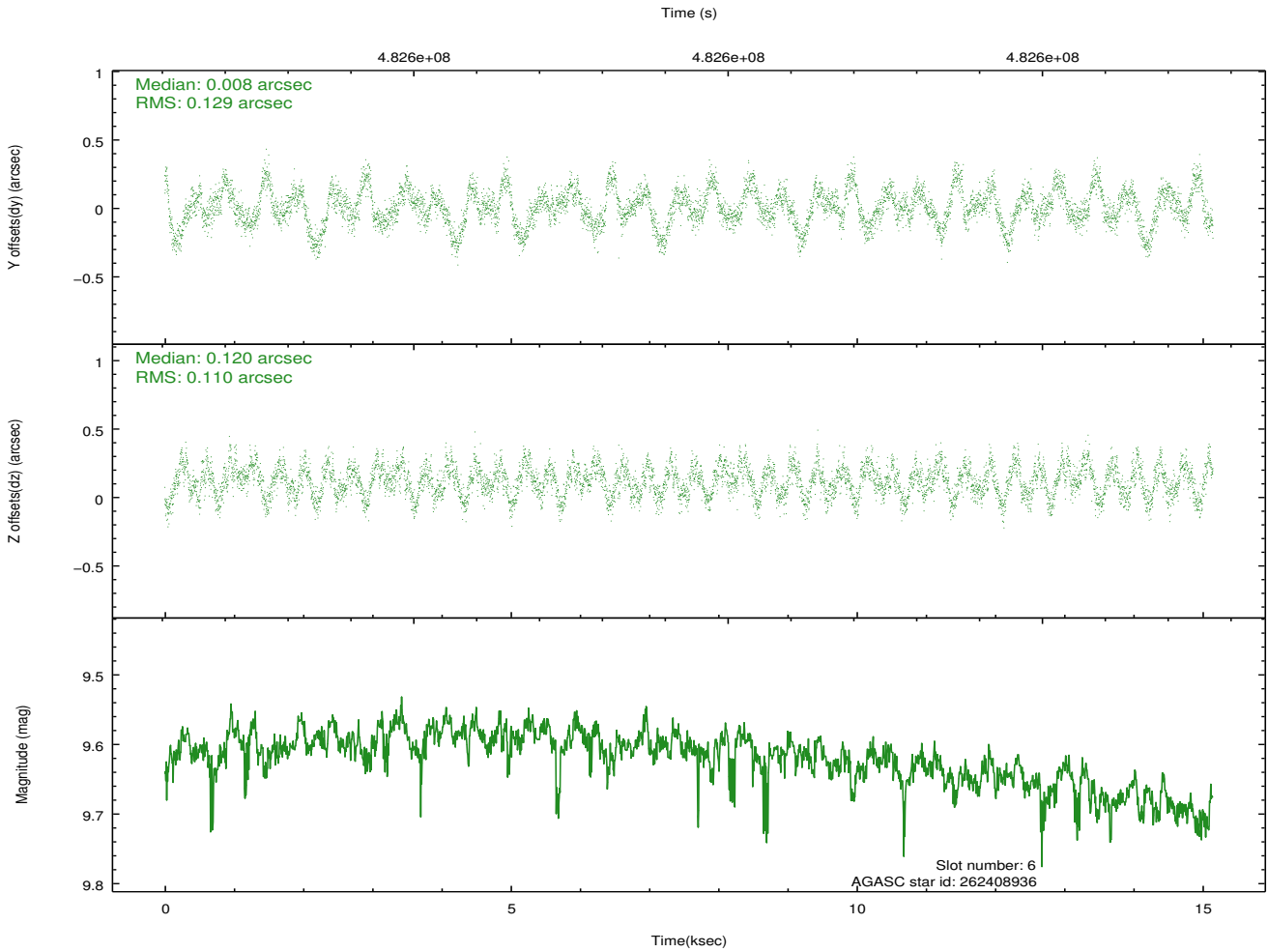
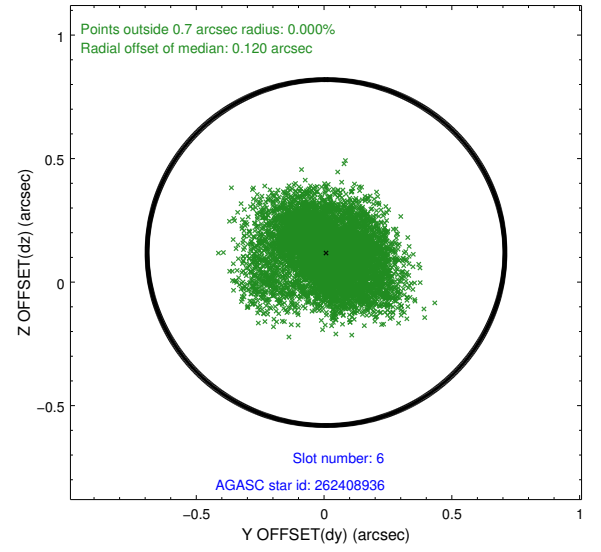
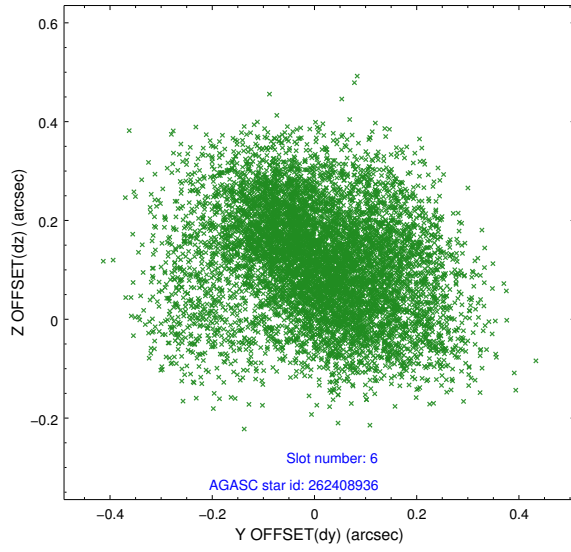
2.4.2 Slot 4



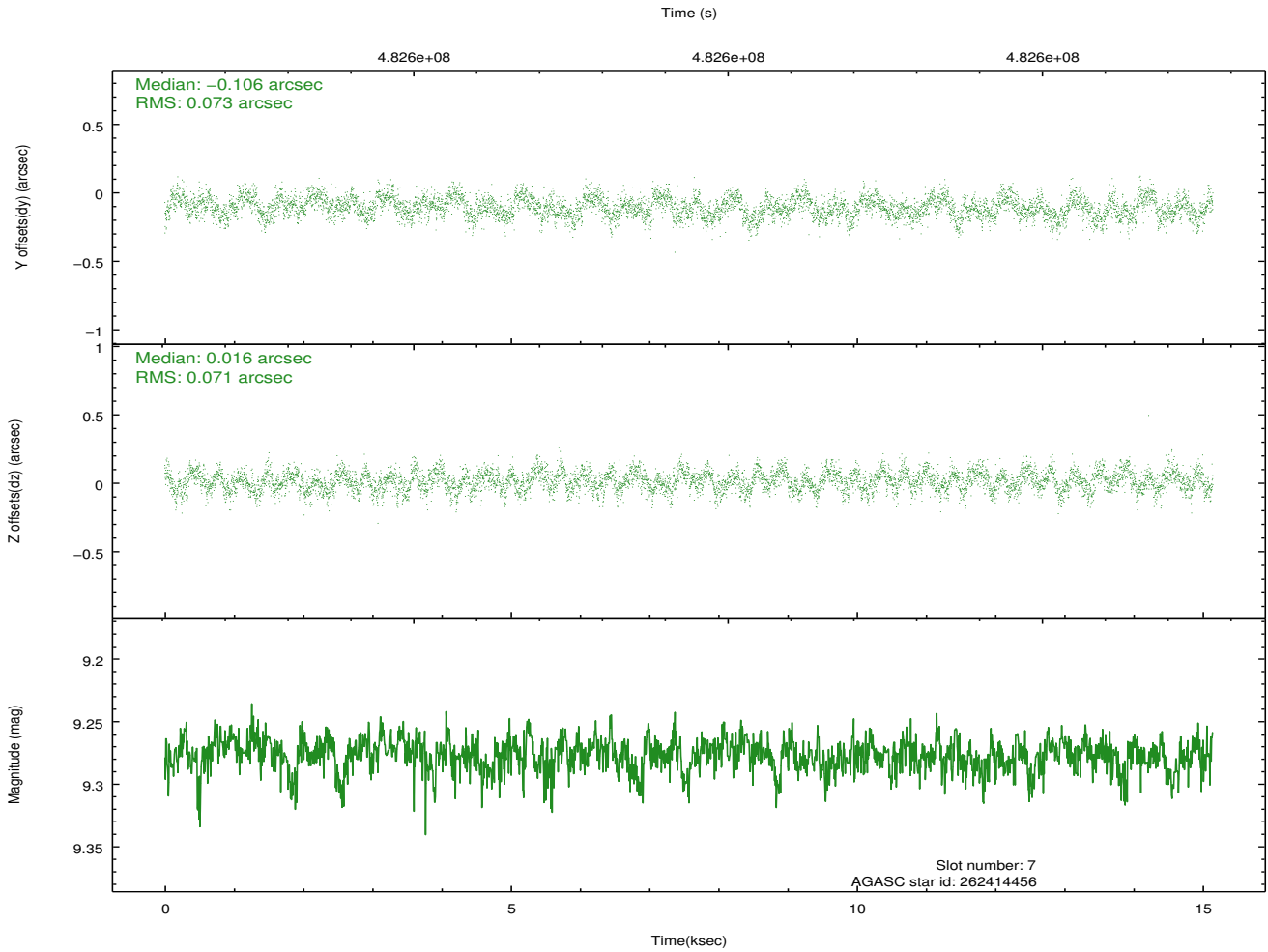
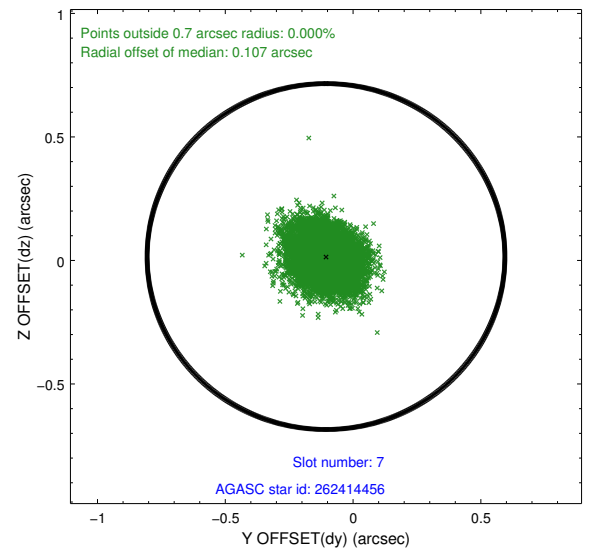
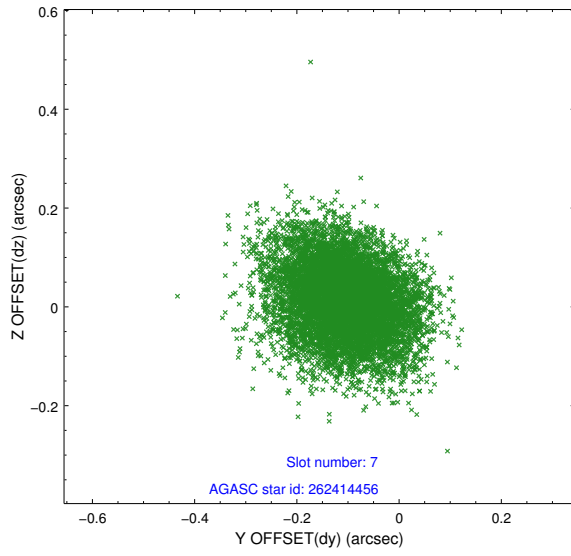
2.4.3 Slot 5



2.4.4 Slot 6

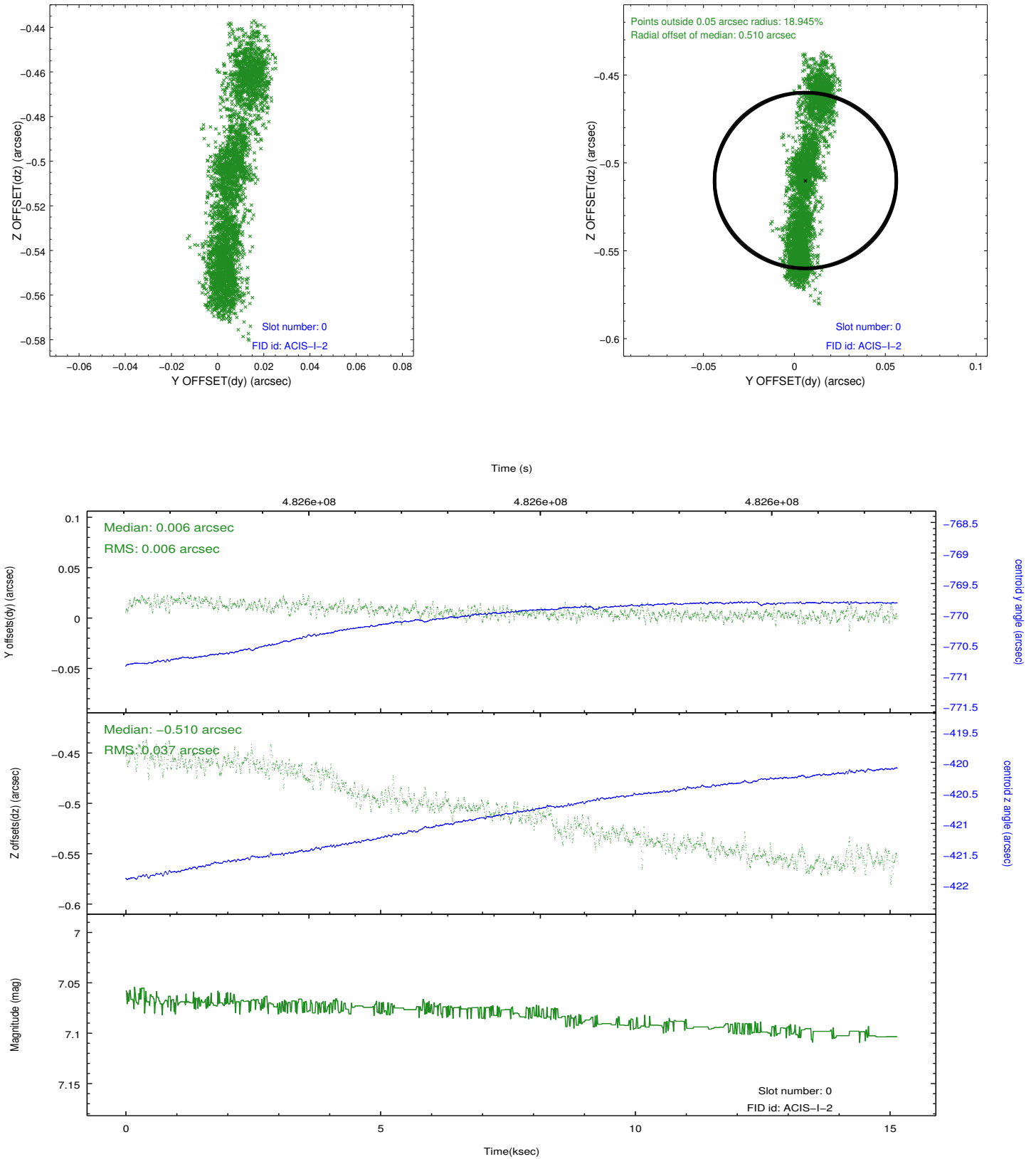


2.4.5 Slot 7

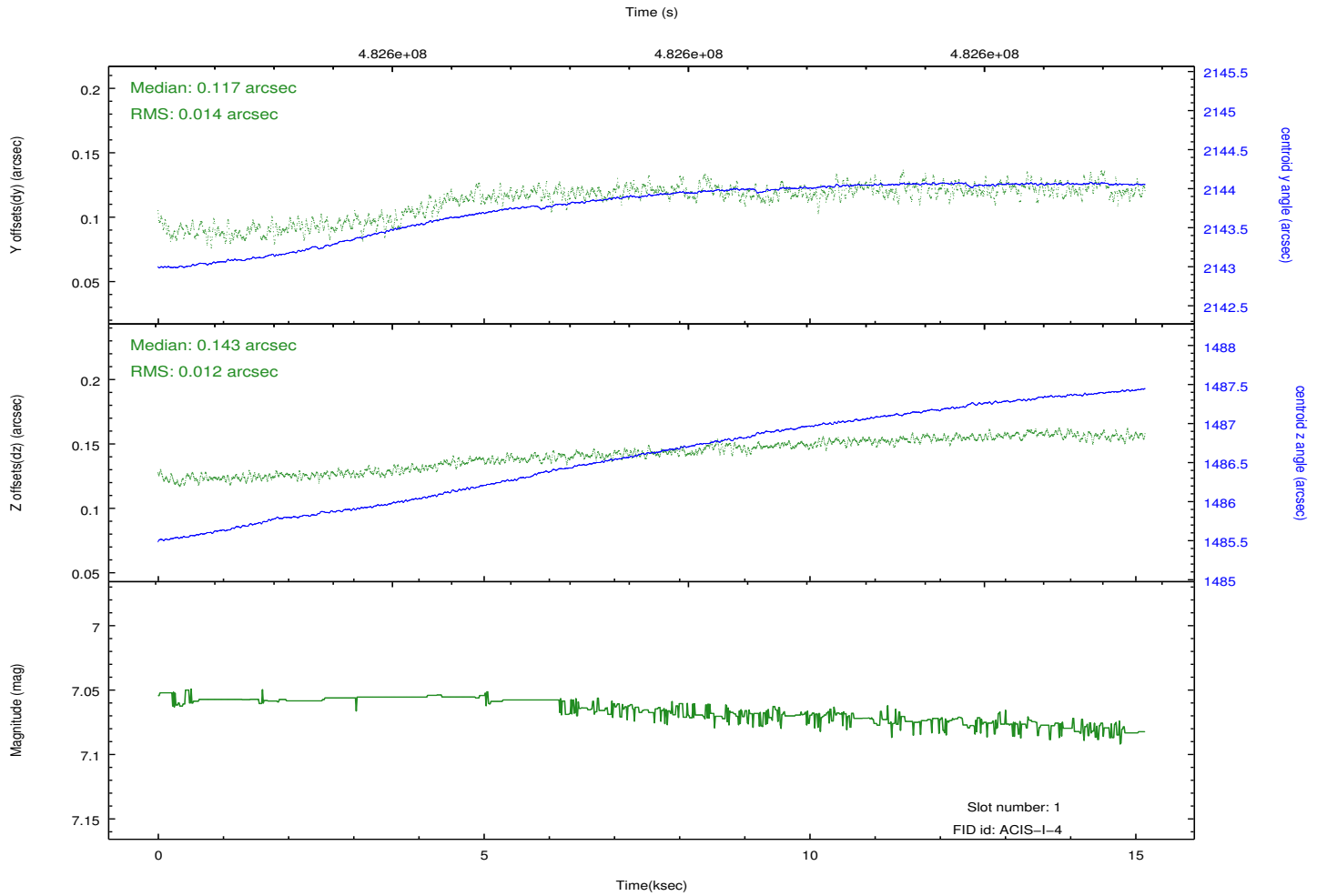
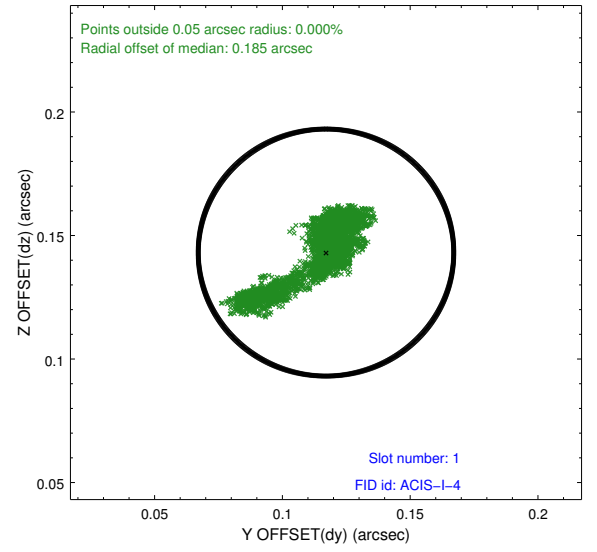
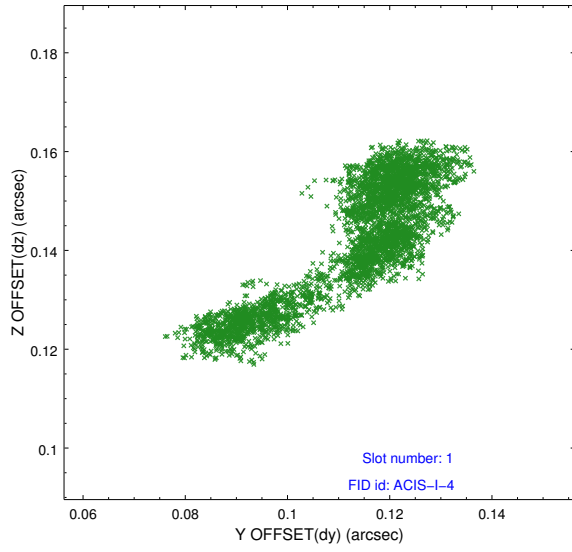


2.5 FID Slots

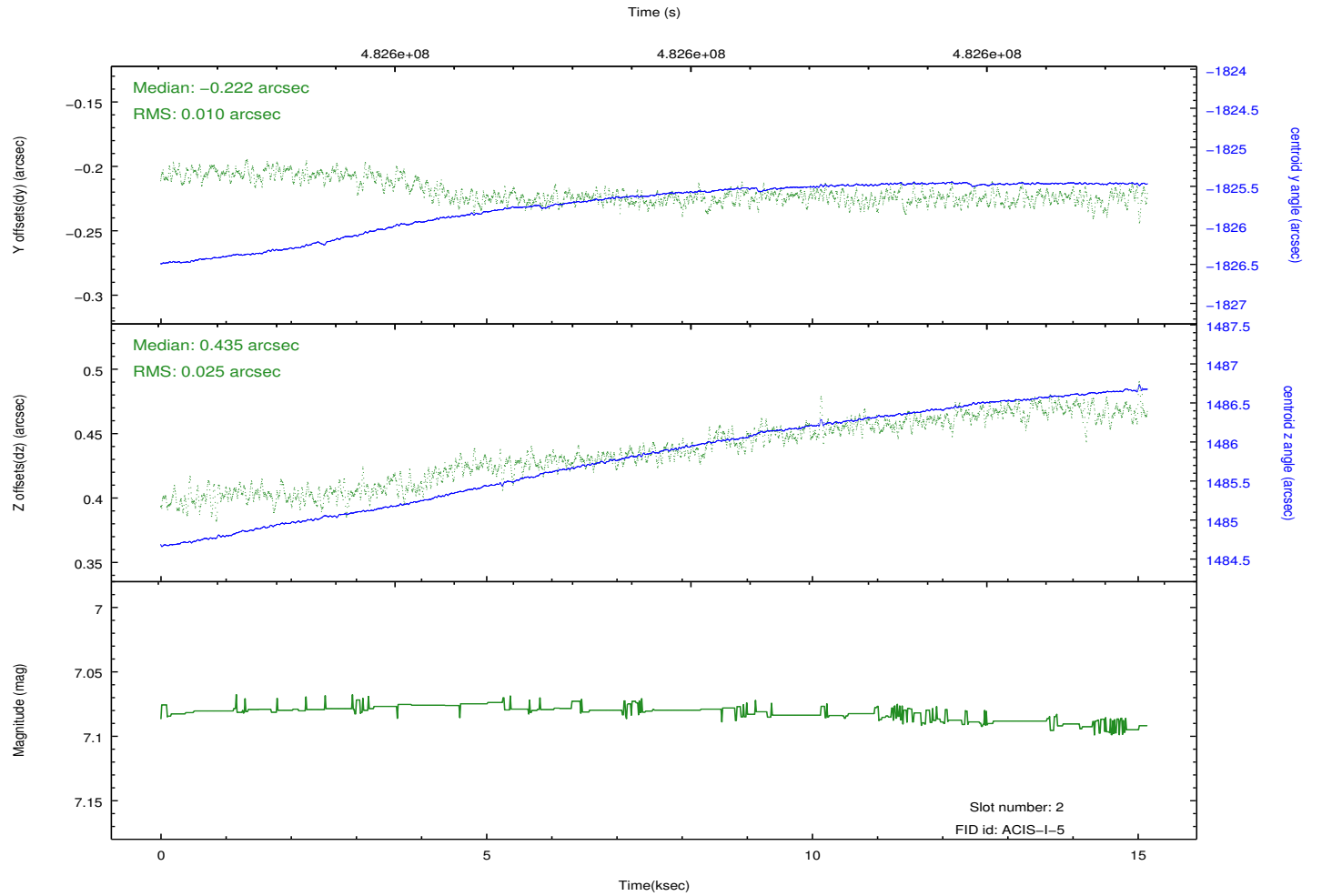
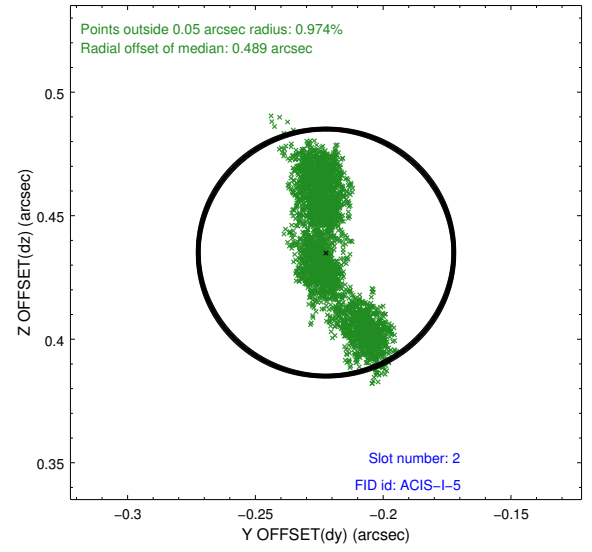
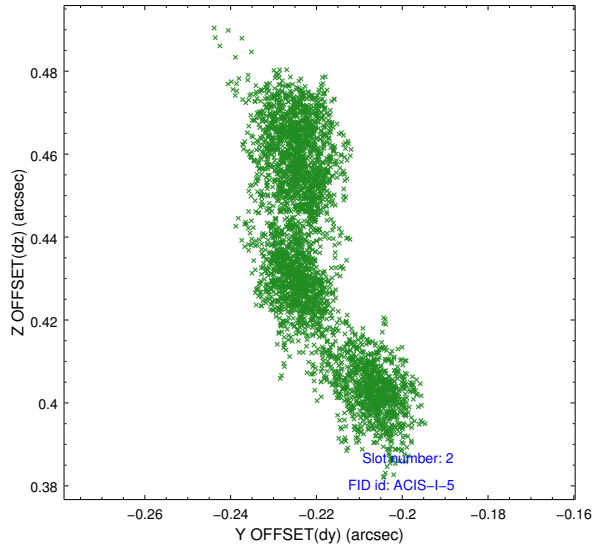
2.5.1 Slot 0



2.5.2 Slot 1



2.5.3 Slot 2



A Summary

A.1 Status

V&V Scientist	Beth Sundheim
V&V Date (YYYY-MM-DD)	2014.12.10
V&V Edition	1
V&V Disposition and Status	OK
V&V Charge Time	15.084540753305

A.2 Comments

These data have been reprocessed with new aspect alignment calibration files that correct small mean offsets (up to 0.4 arcsecs) and improve overall astrometric accuracy. The new calibration was determined using data from the time period being reprocessed and was performed using cross-correlation of X-ray sources with radio and optical counterparts.