

V&V Reference Report

L2 ASCDS Version : 10.1.1

Observation 15310 - L2 Version 2
Chandra X-Ray Center

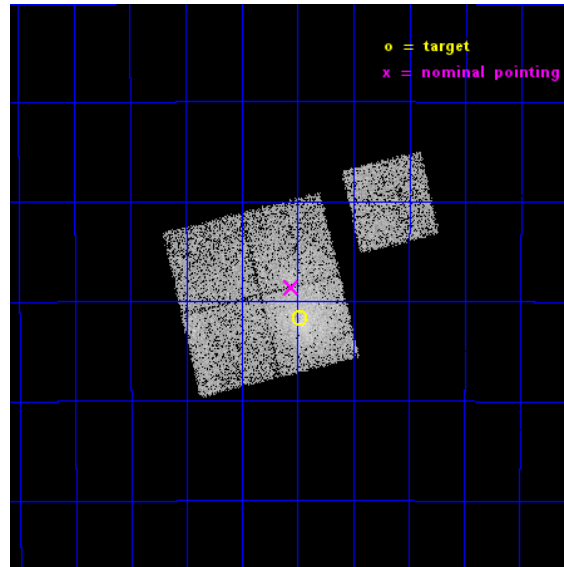
L2 Processing Date : Dec 8 2014

Contents

1	Front	2
2	OBI	3
2.1	OBI	3
2.1.1	Images	3
2.1.2	Bias	3
2.1.3	Parameters	4
2.1.4	Events	4
2.2	Compared Parameters	5
2.3	Aspect	6
2.4	Star Slots	9
2.4.1	Slot 3	9
2.4.2	Slot 4	10
2.4.3	Slot 5	11
2.4.4	Slot 6	12
2.4.5	Slot 7	13
2.5	FID Slots	14
2.5.1	Slot 0	14
2.5.2	Slot 1	15
2.5.3	Slot 2	16
A	Summary	17
A.1	Status	17
A.2	Comments	17

1 Front

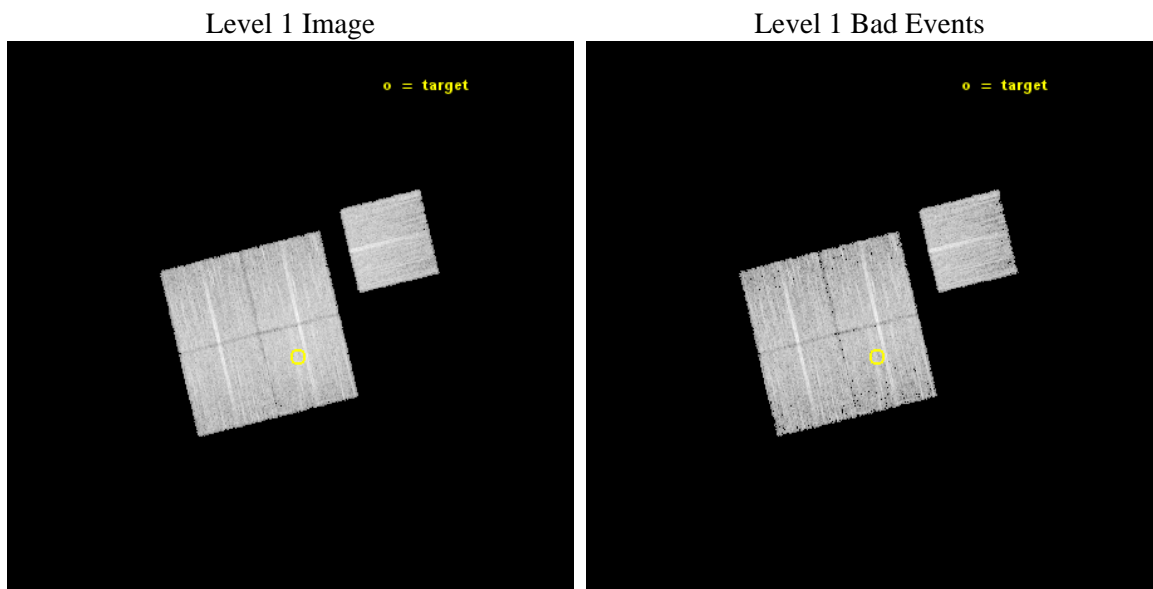
seq_num	801343	Sequence number
obs_id	15310	Observation id
title	Characterizing the Most Massive Clusters in the z	Proposal title
observer	Dr Stephen Murray	Principal investigator
object	G295.33+23.33	Source name
dtcycle	0	
cycle	P	events from which exps? Prim/Second/Both
ra_targ	183.87	Observer's specified target RA [deg]
dec_targ	-39.029722	Observer's specified target Dec [deg]
ra_nom	183.88895215517	Nominal RA [deg]
dec_nom	-38.977360032717	Nominal Dec [deg]
roll_nom	76.340183409919	Nominal Roll [deg]
revision	2	Processing version of data
ontime	14086.400108337	Sum of GTIs [s]
livetime	13902.350920665	Livetime [s]
ontime0	14086.400108337	Sum of GTIs [s]
ontime1	14086.400108337	Sum of GTIs [s]
ontime2	14086.400108337	Sum of GTIs [s]
ontime3	14086.400108337	Sum of GTIs [s]
ontime6	14086.400108337	Sum of GTIs [s]
l2events	42572	Number of level 2 events



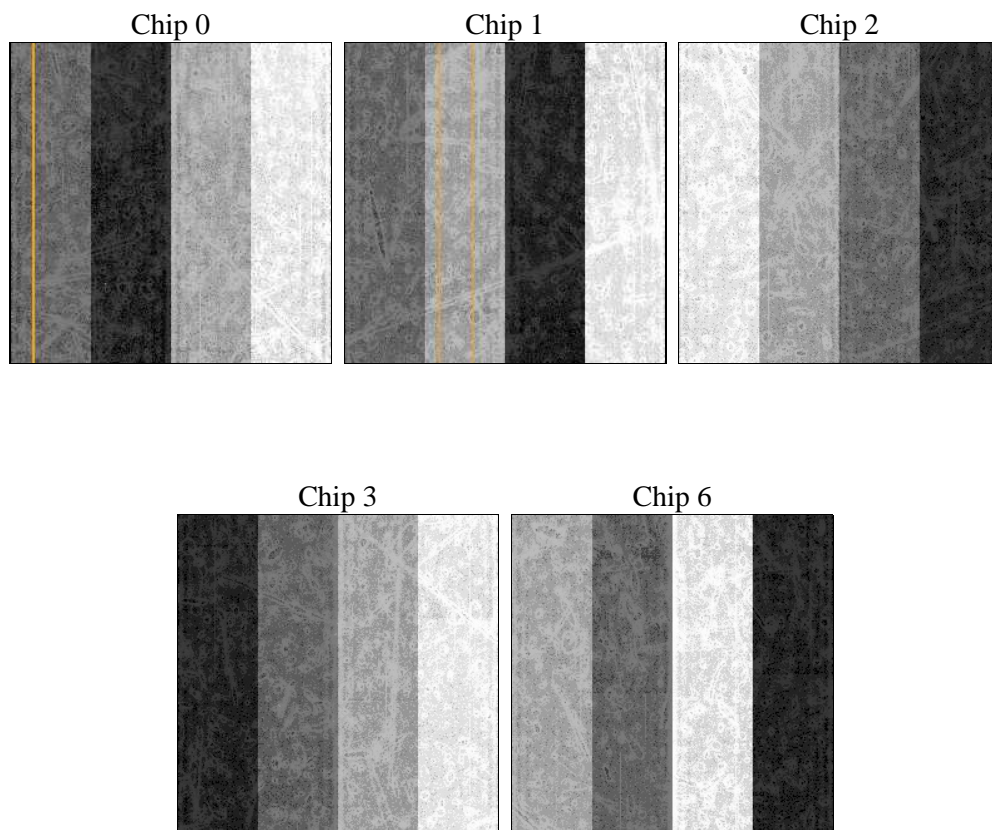
2 OBI

2.1 OBI

2.1.1 Images



2.1.2 Bias



2.1.3 Parameters

obi_num	0	Obi number	sched_exp_time	14000.000000	[s] Scheduled observation exposure time
ascdsver	10.3.1	Processing system revision	ontime	14086.400108337	Sum of GTIs [s]
caldbver	4.6.4	 	ontime0	14086.400108337	Sum of GTIs [s]
date	2014-12-08T09:56:18	Date and time of file creation	ontime1	14086.400108337	Sum of GTIs [s]
revision	2	Processing version of data	ontime2	14086.400108337	Sum of GTIs [s]
			ontime3	14086.400108337	Sum of GTIs [s]
			ontime6	14086.400108337	Sum of GTIs [s]
			l1events	324254	Number of level 1 events

2.1.4 Events

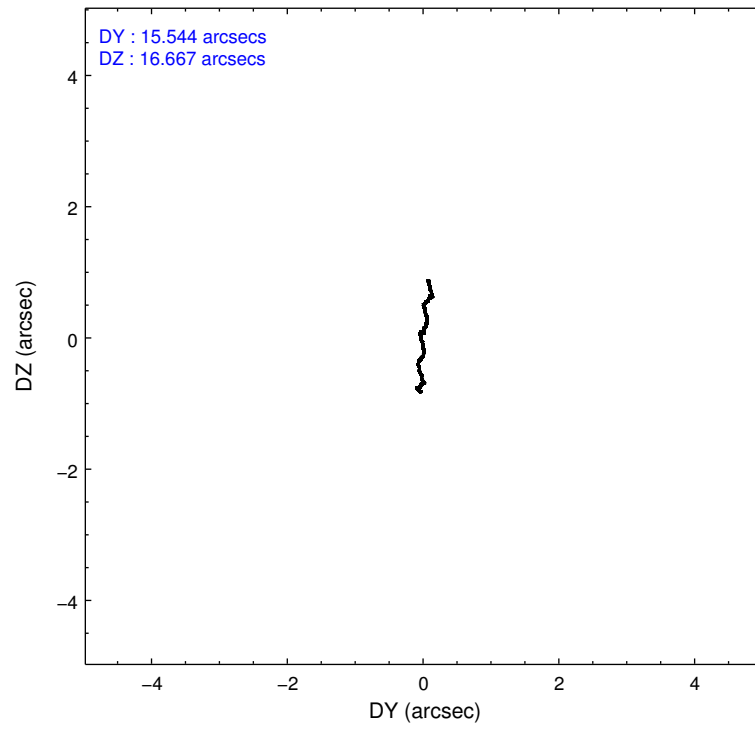
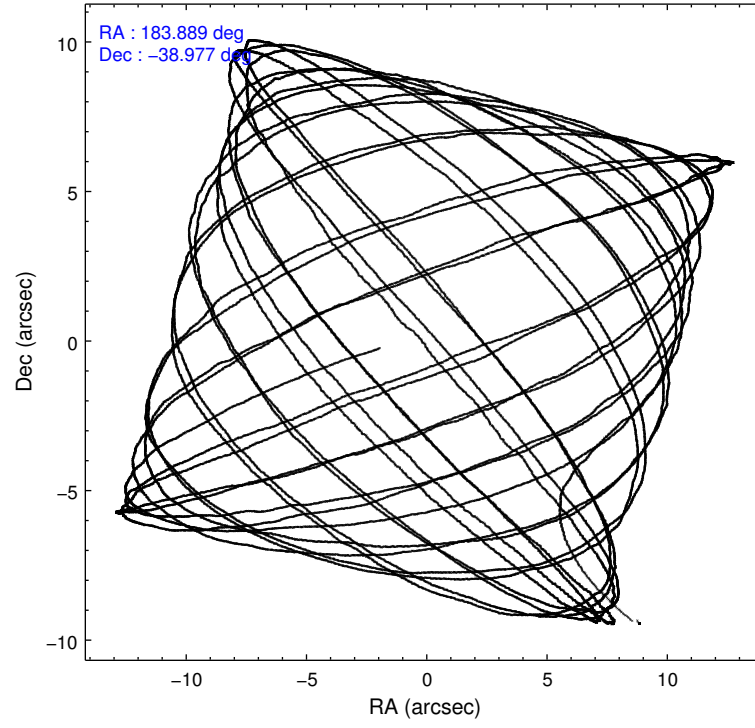
	ccd 0	ccd 1	ccd 2	ccd 3	ccd 6
level 1 events	61006	61865	66582	68857	65944
rejected events	52759	52690	56770	54902	58016
rejected %	86%	85%	85%	79%	87%

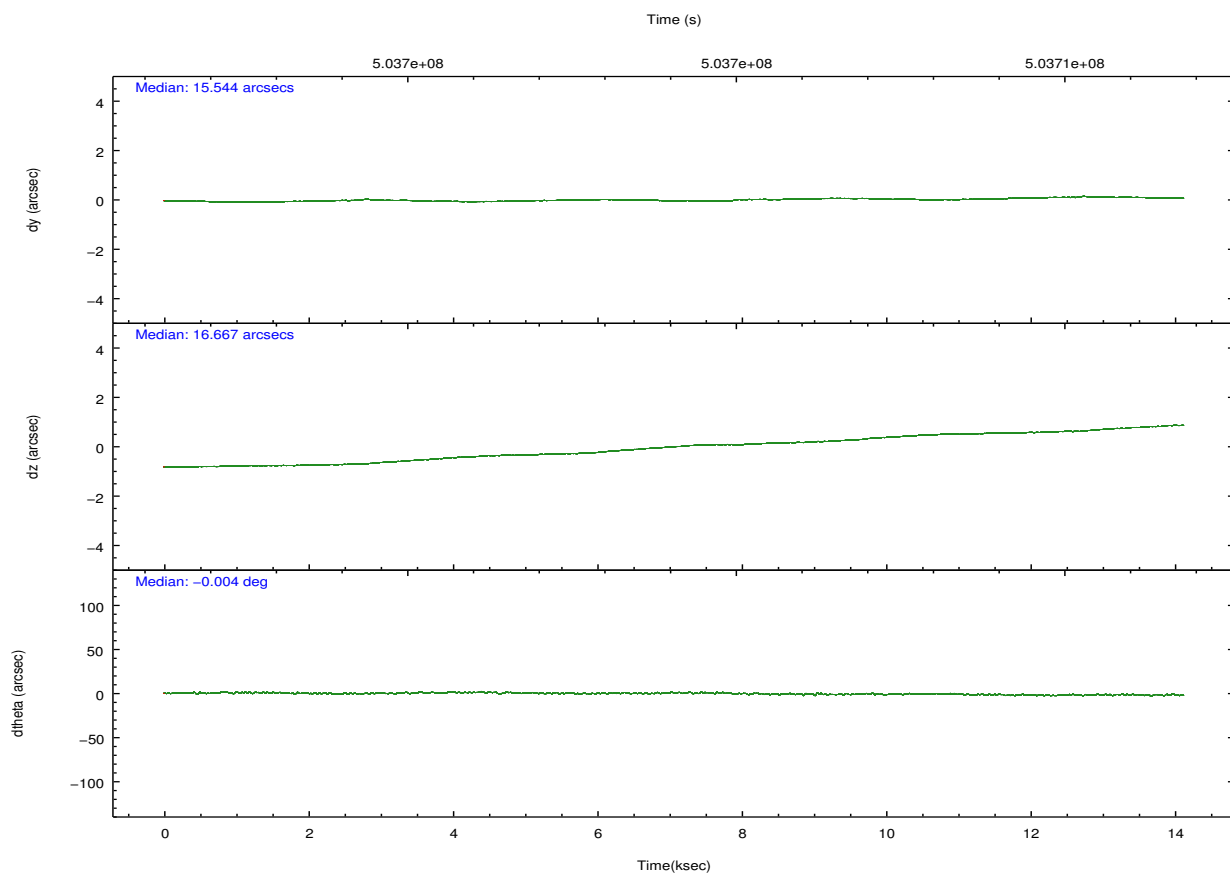
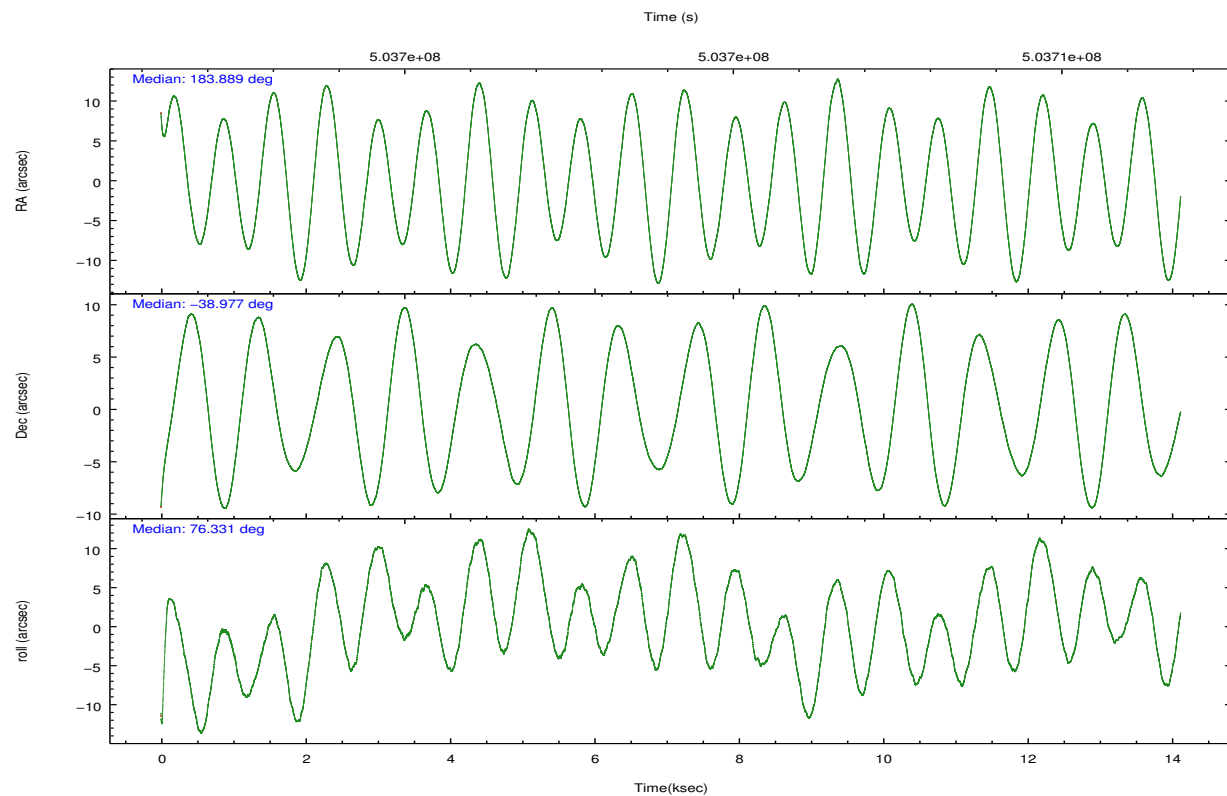
	ccd 0	ccd 1	ccd 2	ccd 3	ccd 6
grade 0 events	2938	3371	4410	7890	2661
	4%	5%	6%	11%	4%
grade 1 events	31	35	49	50	31
	0%	0%	0%	0%	0%
grade 2 events	1993	2213	2131	2352	1735
	3%	3%	3%	3%	2%
grade 3 events	843	851	781	1009	836
	1%	1%	1%	1%	1%
grade 4 events	760	823	862	1003	806
	1%	1%	1%	1%	1%
grade 5 events	3128	3328	3017	3491	3371
	5%	5%	4%	5%	5%
grade 6 events	1717	1925	1632	1706	1892
	2%	3%	2%	2%	2%
grade 7 events	49596	49319	53700	51356	54612
	81%	79%	80%	74%	82%

2.2 Compared Parameters

Parameter	Planned	Actual	Parameter	Planned	Actual
Instrument	ACIS	ACIS	Obspar format version number	7	7
Detector	ACIS-01236	ACIS-01236	Obspar file type	PREDICTED	ACTUAL
Grating	NONE	NONE	Obspar update status	NONE	UPDATED
Data mode	VFAINT	VFAINT	CCD I0 on	Y	Y
Observation mode	POINTING	POINTING	CCD I1 on	Y	Y
[deg] Pointing RA	183.899029	183.8889521551663	CCD I2 on	Y	Y
[deg] Pointing Dec	-39.003706	-38.97736003271658	CCD I3 on	Y	Y
[deg] Pointing Roll	76.137852	76.34018340991912	CCD S0 on	N	N
[mm] SIM focus pos	-0.782348	-0.7809083437167272	CCD S1 on	N	N
[mm] SIM defocus	0	0.001439871863259334	CCD S2 on	O1	Y
[mm] SIM translation stage pos	-225.840463	-225.8433433320239	CCD S3 on	N	N
[mm] SIM translation stage offset	-7.752	-7.749109670905796	CCD S4 on	N	N
[s] Observation start time (MET)	503697104.184000	503695935.0517	CCD S5 on	N	N
Observation start date	2013-12-17T19:50:37	2013-12-17T19:32:15	Number of optional ACIS chips dropped	0	0
[s] Observation end time (MET)	503711104.184000	503712108.01508	On-chip summing requested	N	N
Observation end date	2013-12-17T23:43:57	2013-12-18T00:01:48	Subarray requested	NONE	NONE
Read mode	TIMED	TIMED	Alternating exposures requested	N	N
			[s] Primary exposure time	0.000000	3.1

2.3 Aspect



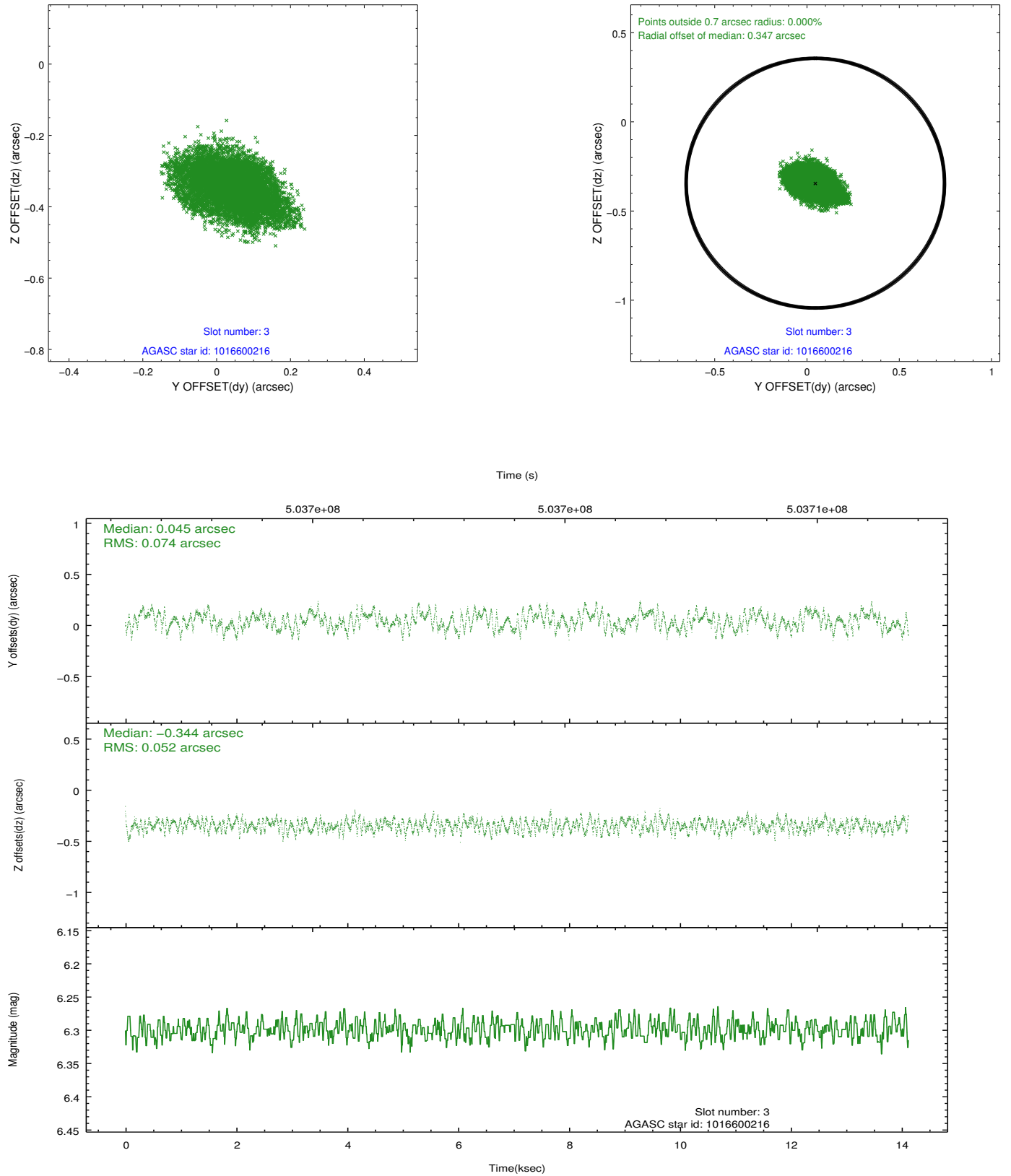


Slot Statistics

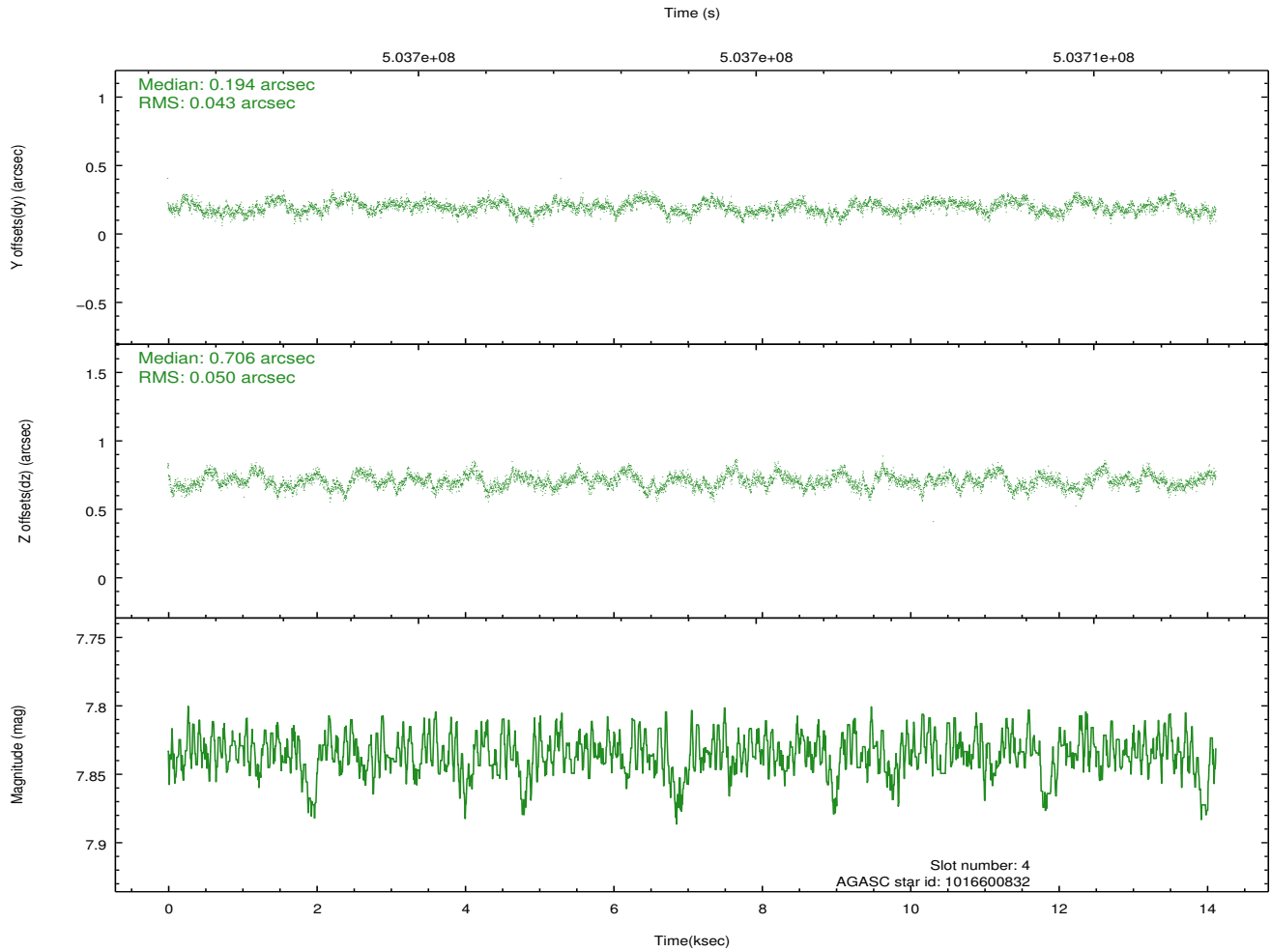
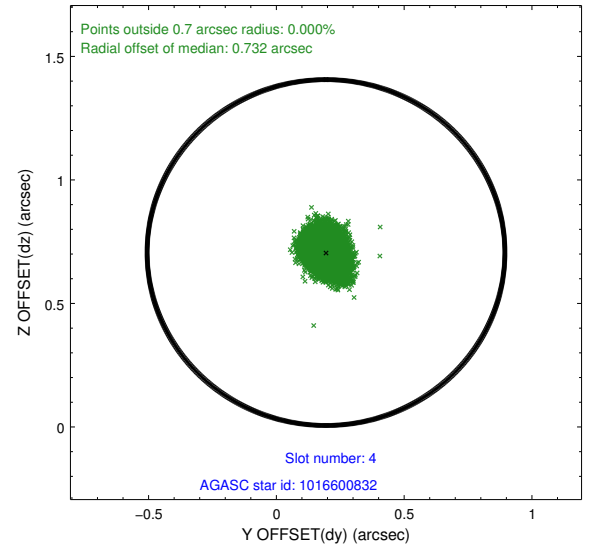
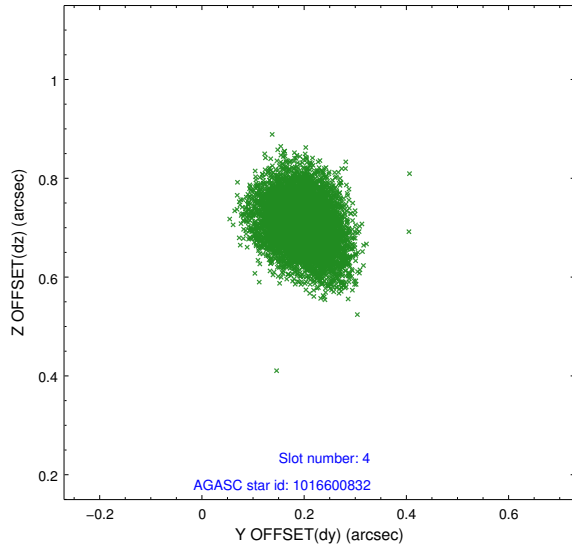
slot	status	used	id	mag	n_pts	med_dy	med_dz	dr1	dr2	ra	dec	mean_y	mean_z
0	FID		ACIS-I-1	7.11	3446	0.134	-0.176	0.012	0.019	0.000000	0.000000	923.93	-999.48
1	FID		ACIS-I-4	7.00	3445	0.089	0.083	0.010	0.016	0.000000	0.000000	2143.60	901.39
2	FID		ACIS-I-5	7.09	3445	-0.321	0.165	0.008	0.014	0.000000	0.000000	-1824.18	898.57
3	GUIDE	used	1016600216	6.30	6891	0.045	-0.344	0.097	0.155	183.354325	-38.929184	-109.65	1544.52
4	GUIDE	used	1016600832	7.84	6890	0.194	0.706	0.070	0.113	184.593242	-39.271285	-478.15	-2109.74
5	GUIDE	used	1016603776	9.04	6889	-0.276	-0.460	0.126	0.190	183.896334	-38.769093	818.05	209.41
6	GUIDE	used	1016605312	9.36	6887	-0.138	-0.274	0.123	0.193	183.129714	-38.711449	494.74	2348.21
7	GUIDE	used	1017127072	7.49	6890	0.184	0.378	0.069	0.105	184.654151	-39.418400	-953.77	-2397.21

2.4 Star Slots

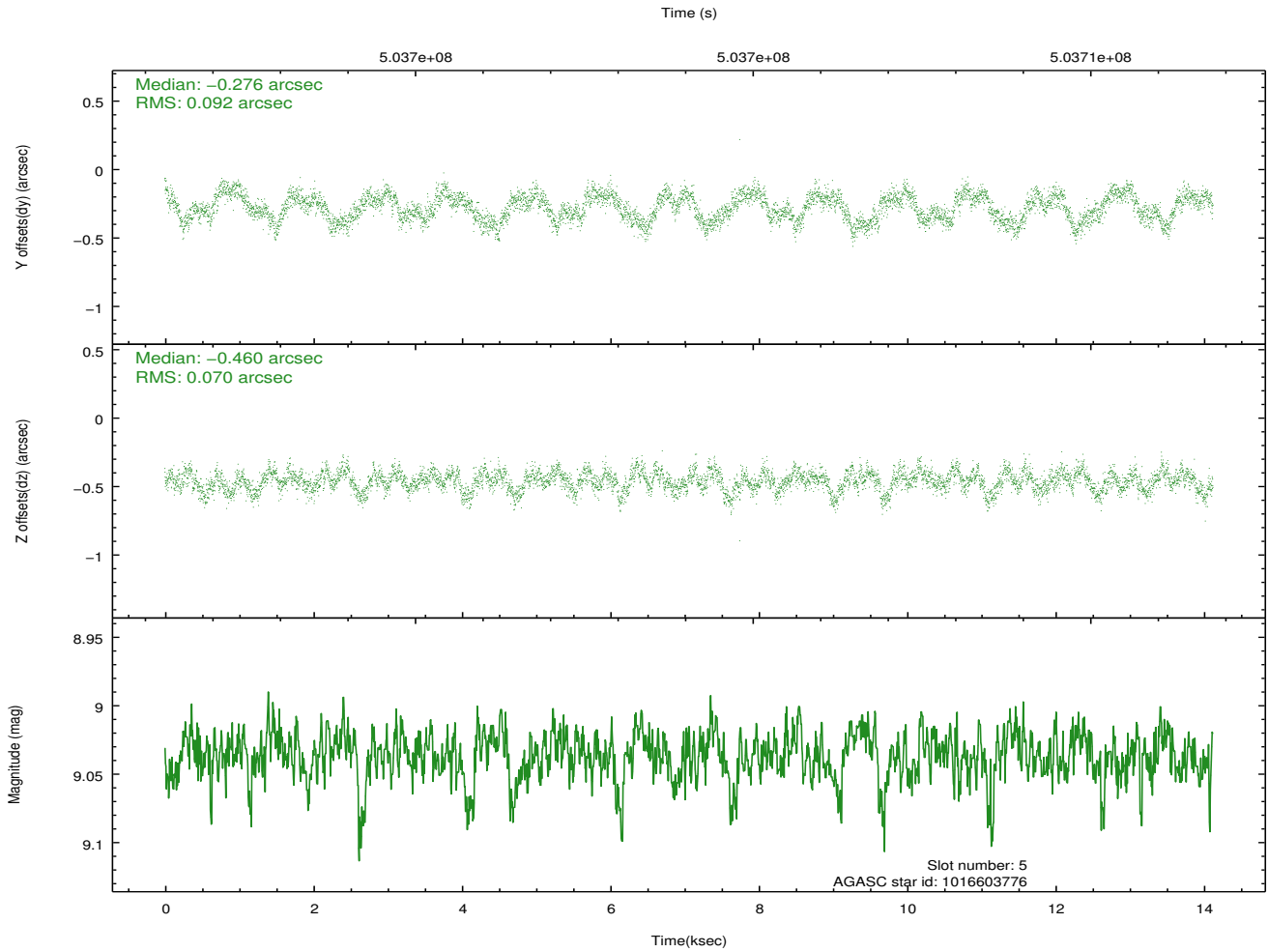
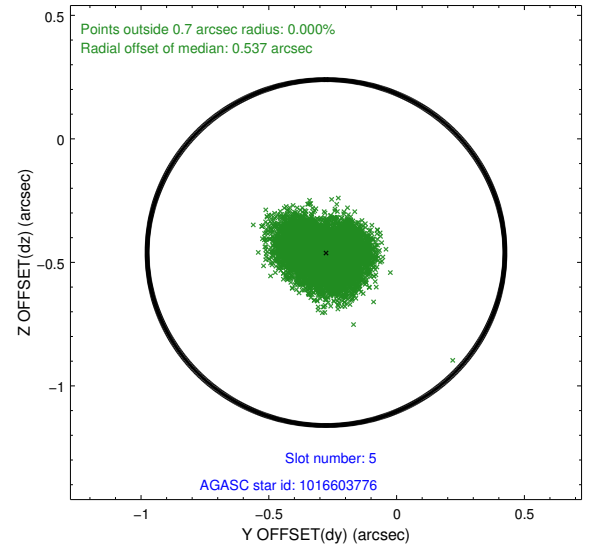
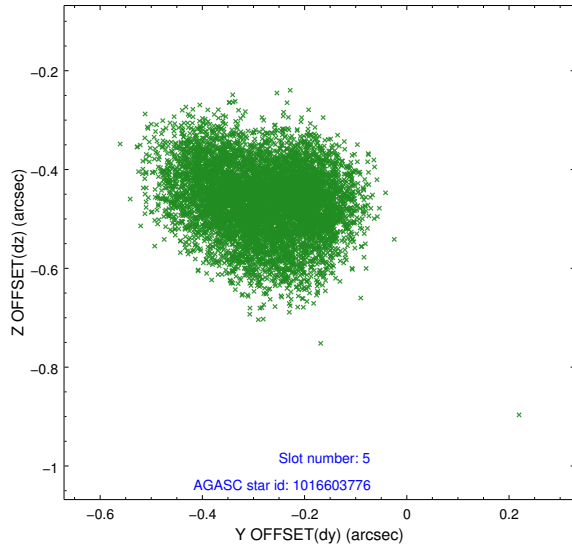
2.4.1 Slot 3



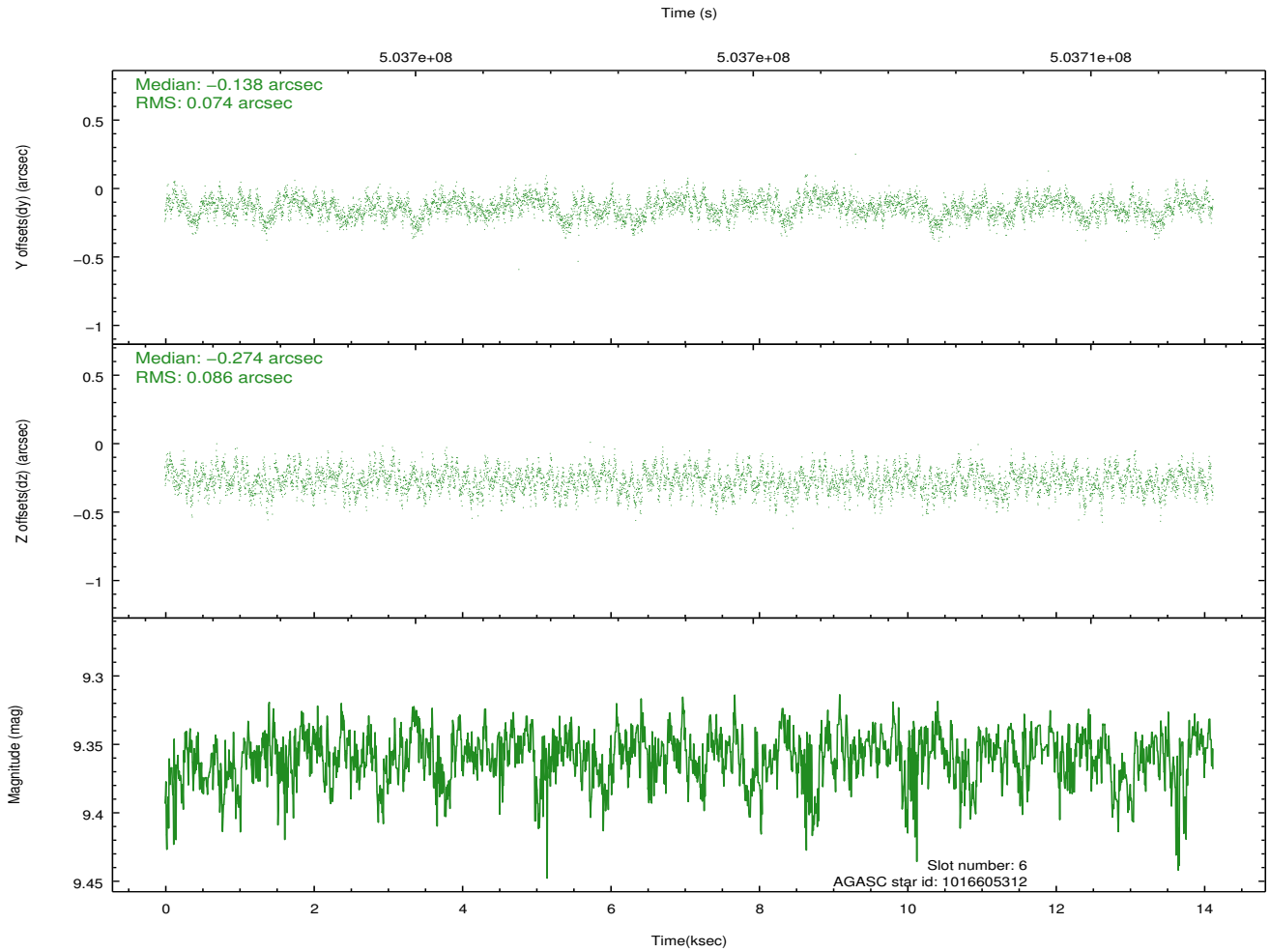
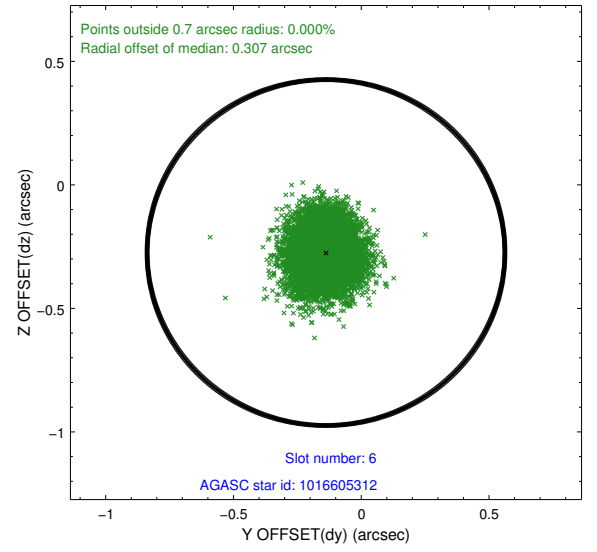
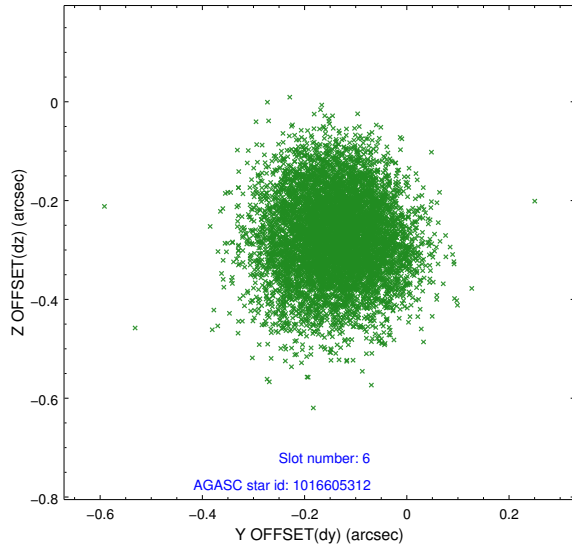
2.4.2 Slot 4



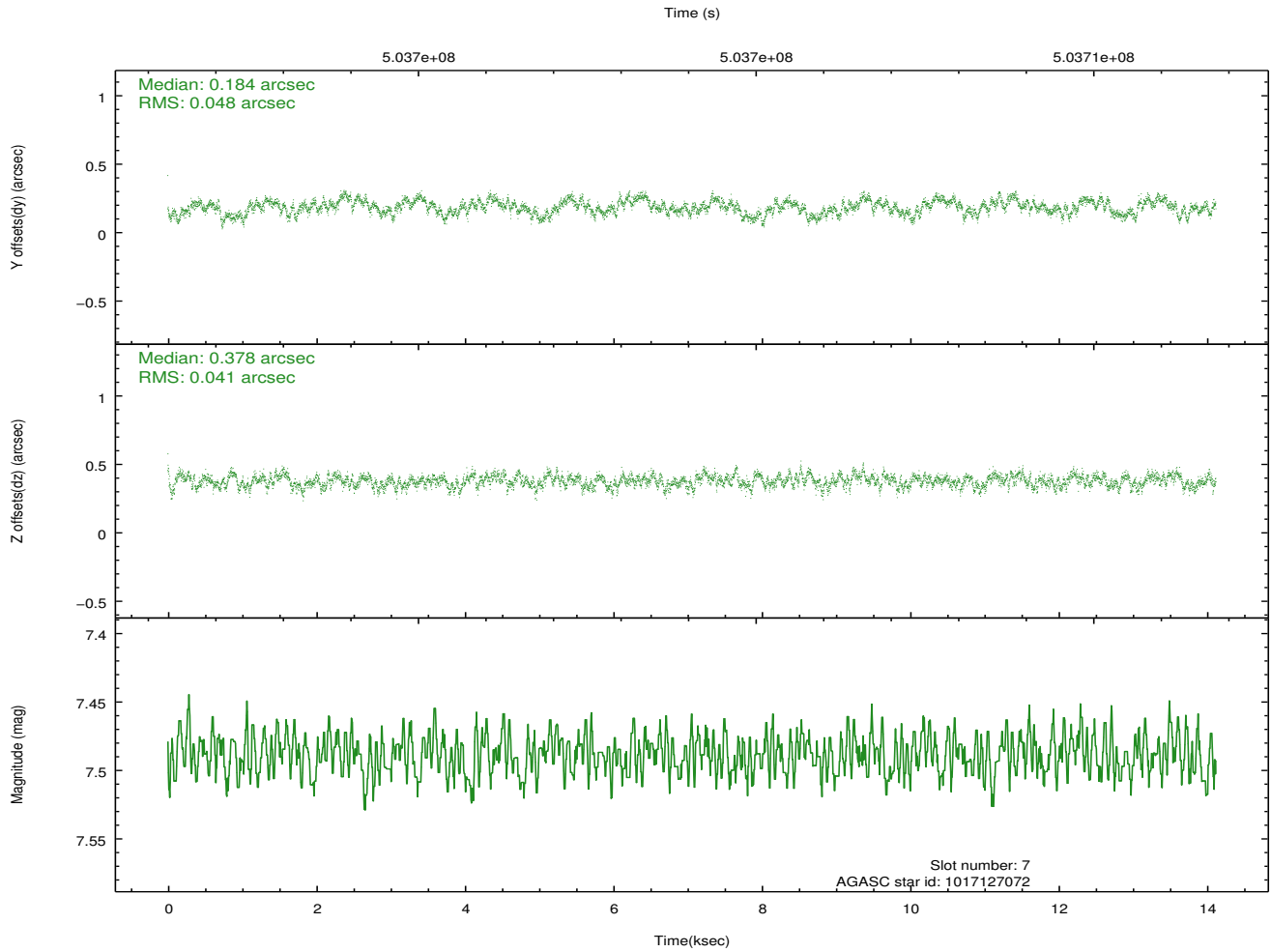
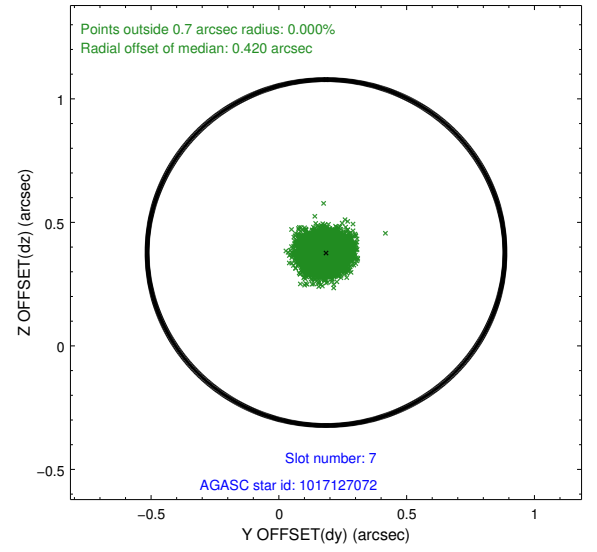
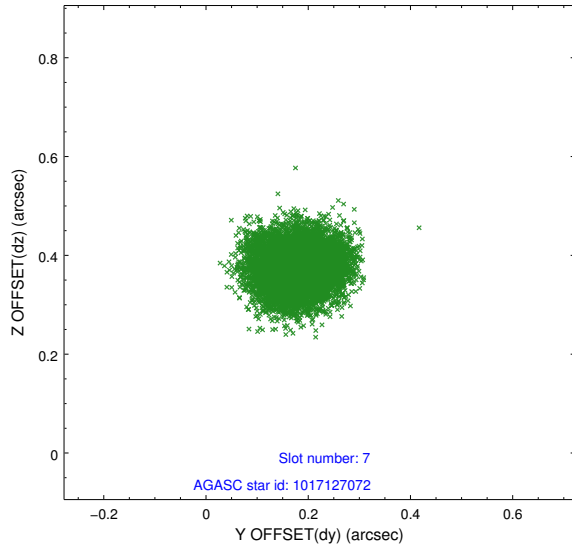
2.4.3 Slot 5



2.4.4 Slot 6

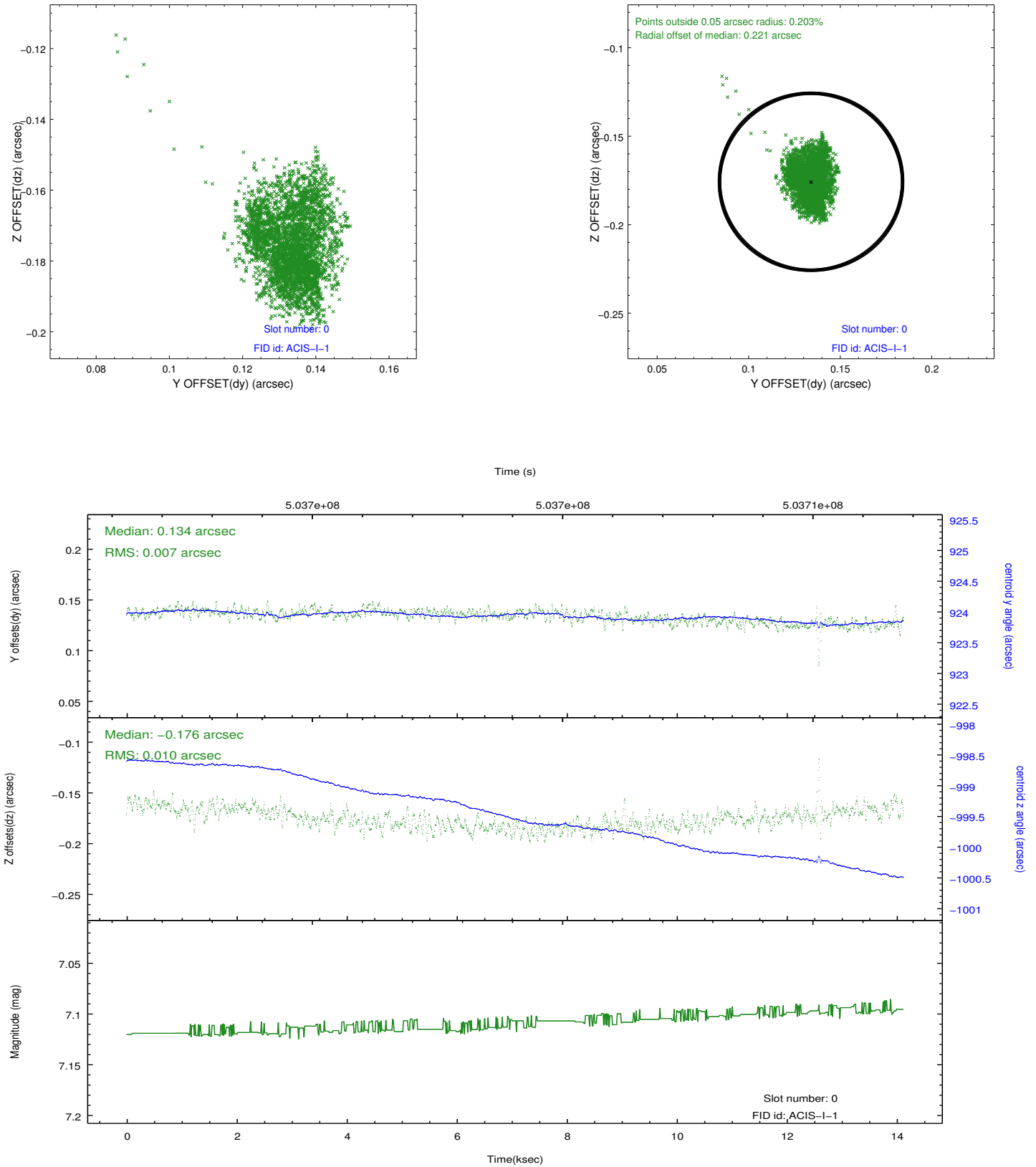


2.4.5 Slot 7

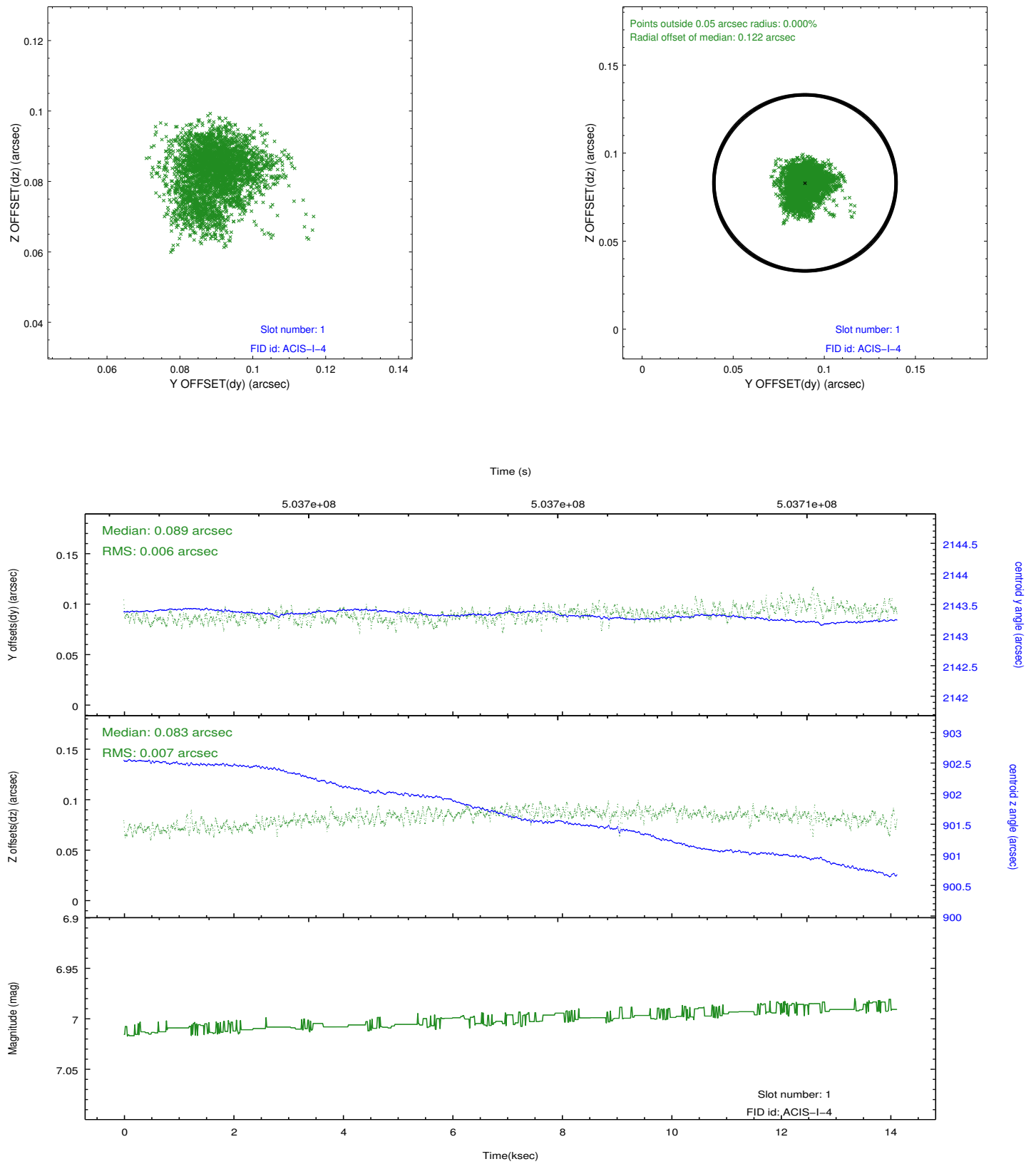


2.5 FID Slots

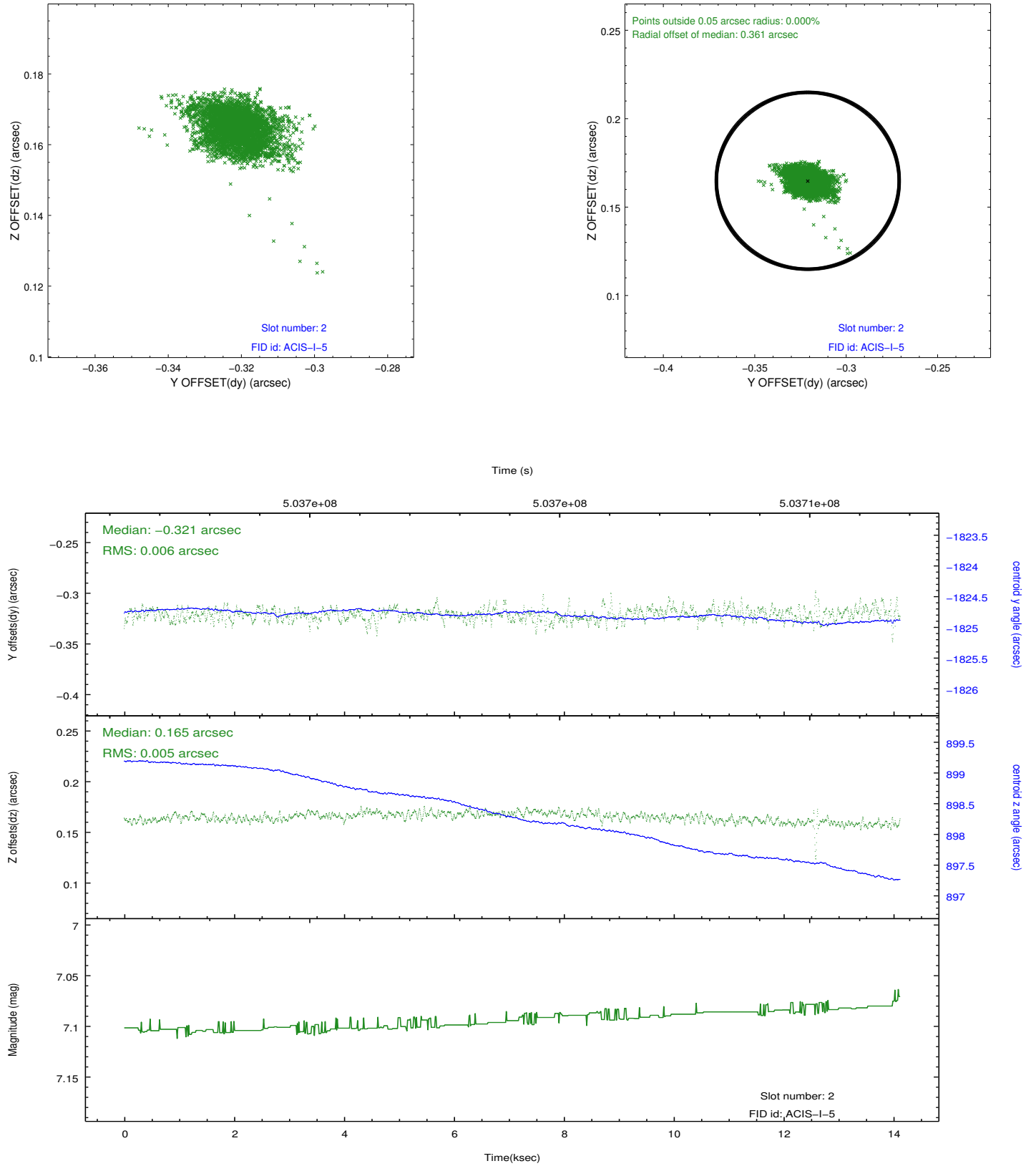
2.5.1 Slot 0



2.5.2 Slot 1



2.5.3 Slot 2



A Summary

A.1 Status

V&V Scientist	Beth Sundheim
V&V Date (YYYY-MM-DD)	2014.12.15
V&V Edition	1
V&V Disposition and Status	OK
V&V Charge Time	14.086400108337

A.2 Comments