

V&V Reference Report

L2 ASCDS Version : 7.6.9

Observation 1530 - L2 Version 001
Chandra X-Ray Center

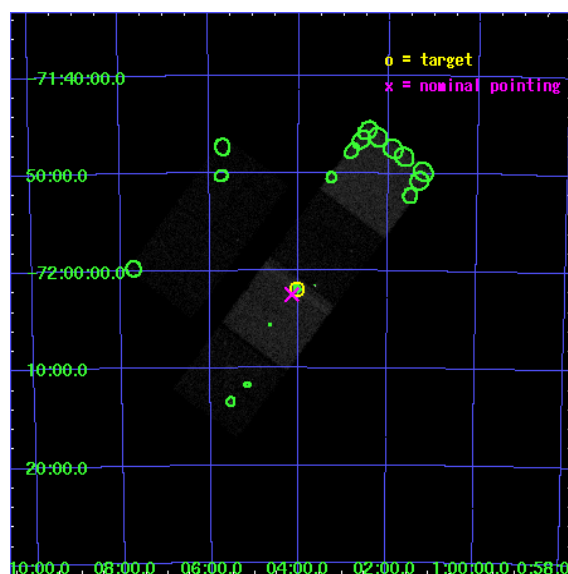
L2 Processing Date : Nov 25 2006

Contents

1	Front	2
2	OBI	3
2.1	OBI	3
2.1.1	Images	3
2.1.2	Bias	3
2.1.3	Parameters	4
2.1.4	Events	4
2.2	Compared Parameters	5
2.3	Aspect	6
2.4	Star Slots	9
2.4.1	Slot 3	9
2.4.2	Slot 4	10
2.4.3	Slot 5	11
2.4.4	Slot 6	12
2.4.5	Slot 7	13
2.5	FID Slots	14
2.5.1	Slot 0	14
2.5.2	Slot 1	15
2.5.3	Slot 2	16
3	Point Sources	17
A	Summary	18
A.1	Status	18
A.2	Comments	18

1 Front

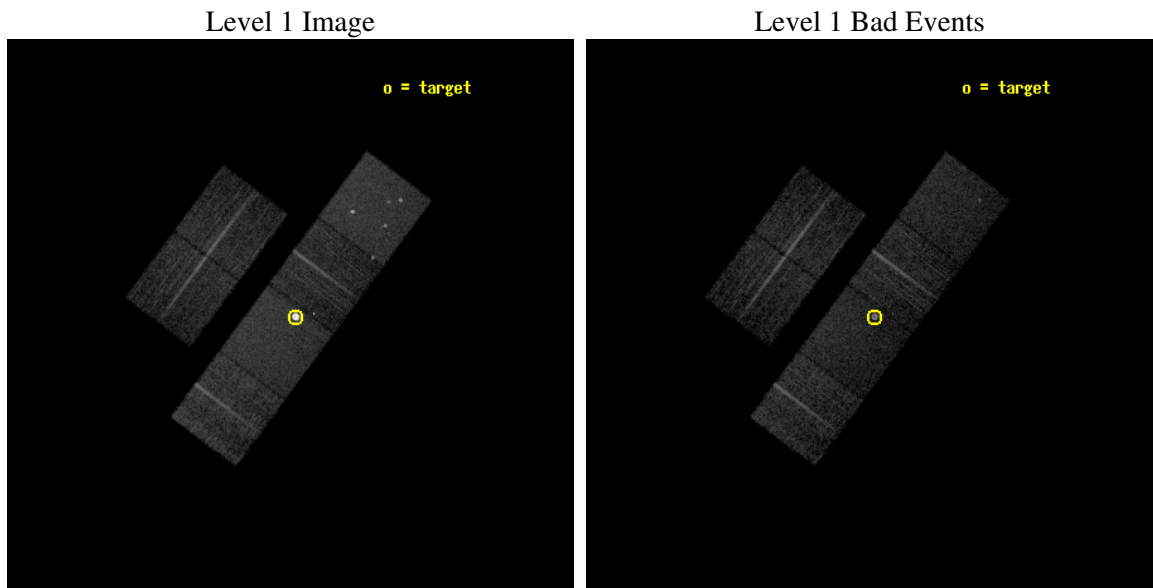
seq_num	590139
obs_id	1530
title	ACIS CALIBRATION OBSERVATION OF THE SUPERNOVA REMNANT E0102-72 (JUNE 2001)
observer	Dr. CXC Calibration
object	E0102-72.3 [Chip S3, T=120, Offsets=1,0,0]
dtcycle	0
cycle	P
ra_targ	16.01
dec_targ	-72.032028
ra_nom	16.038613157423
dec_nom	-72.04110347123
roll_nom	126.75376915415
revision	2
ontime	7705.6000071764
livetime	7608.0270601302
ontime2	7702.3590469211
ontime3	7705.6000071764
ontime5	7705.6000071764
ontime6	7705.6000071764
ontime7	7705.6000071764
ontime8	7705.6000071764
l2events	138877



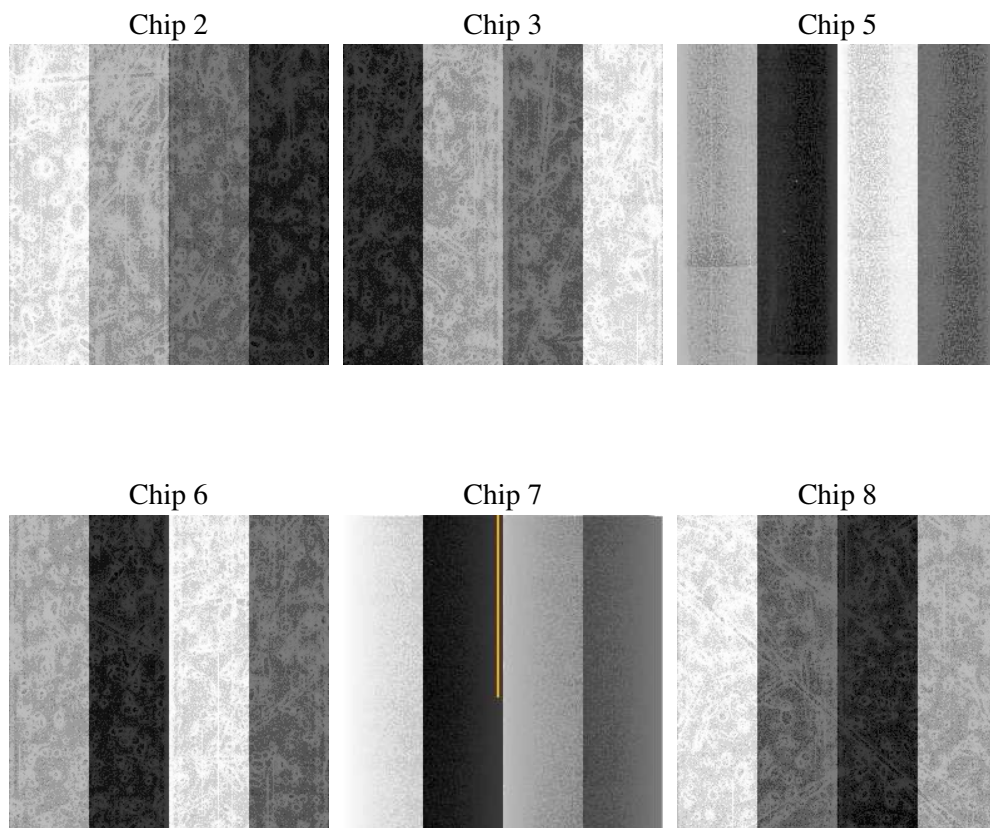
2 OBI

2.1 OBI

2.1.1 Images



2.1.2 Bias



2.1.3 Parameters

obi_num	0
ascdsver	7.6.9
caldsver	3.2.4
date	2006-11-25T08:04:22
revision	2

sched_exp_time	7755.000000
ontime	7710.3360704333
ontime2	7707.095110178
ontime3	7710.3360704333
ontime5	7710.3360704333
ontime6	7710.3360704333
ontime7	7710.3360704333
ontime8	7710.3360704333
l1events	423047

2.1.4 Events

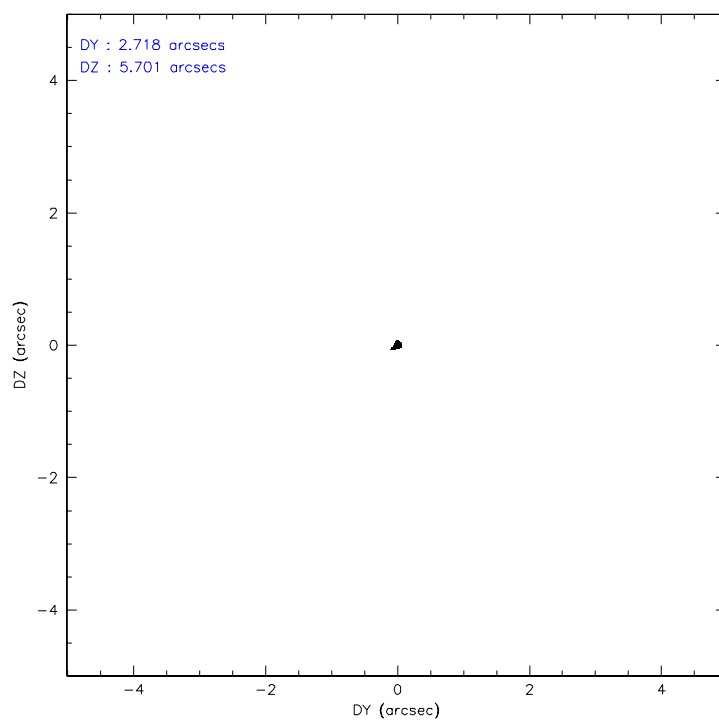
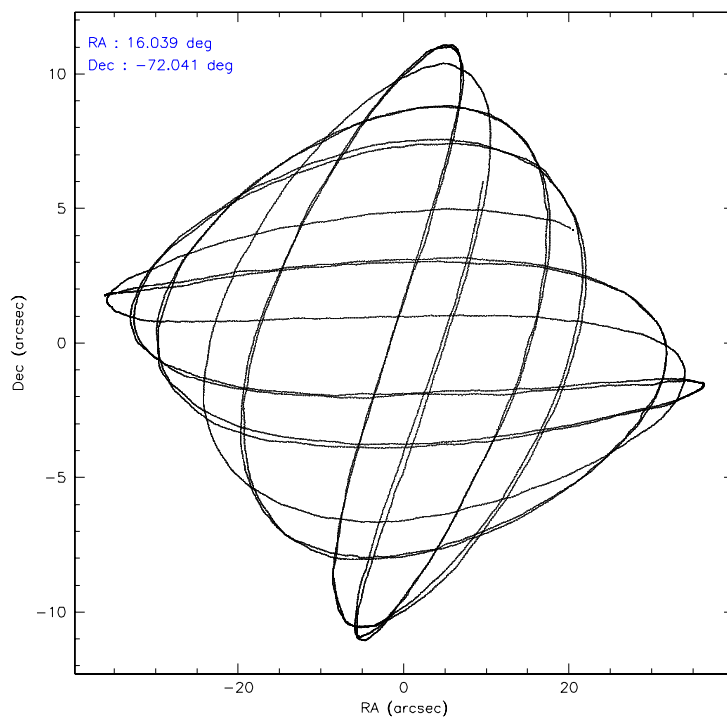
	ccd 2	ccd 3	ccd 5	ccd 6	ccd 7	ccd 8
level 1 events	52017	48628	73607	53377	129622	65796
rejected events	46289	43058	39449	46124	41990	51333
rejected %	88%	88%	53%	86%	32%	78%

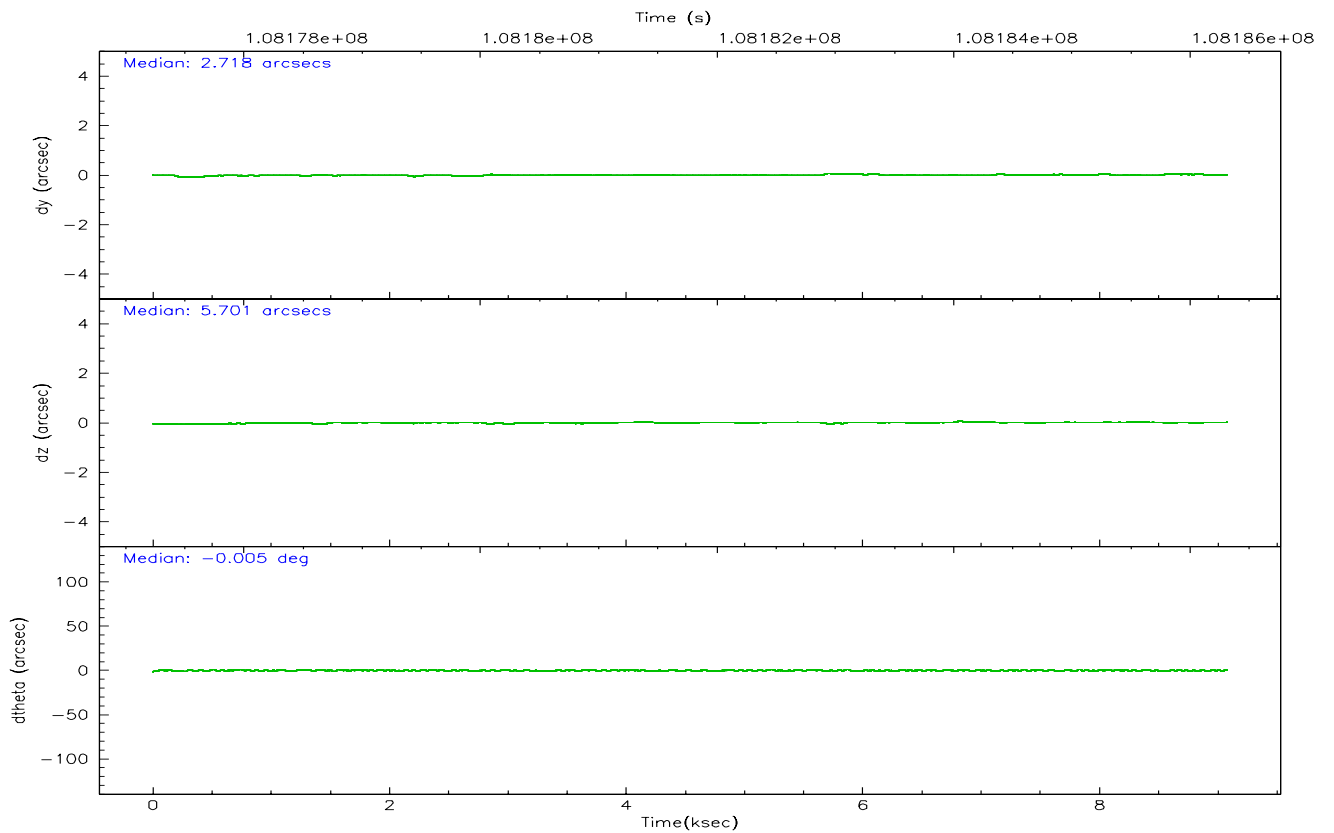
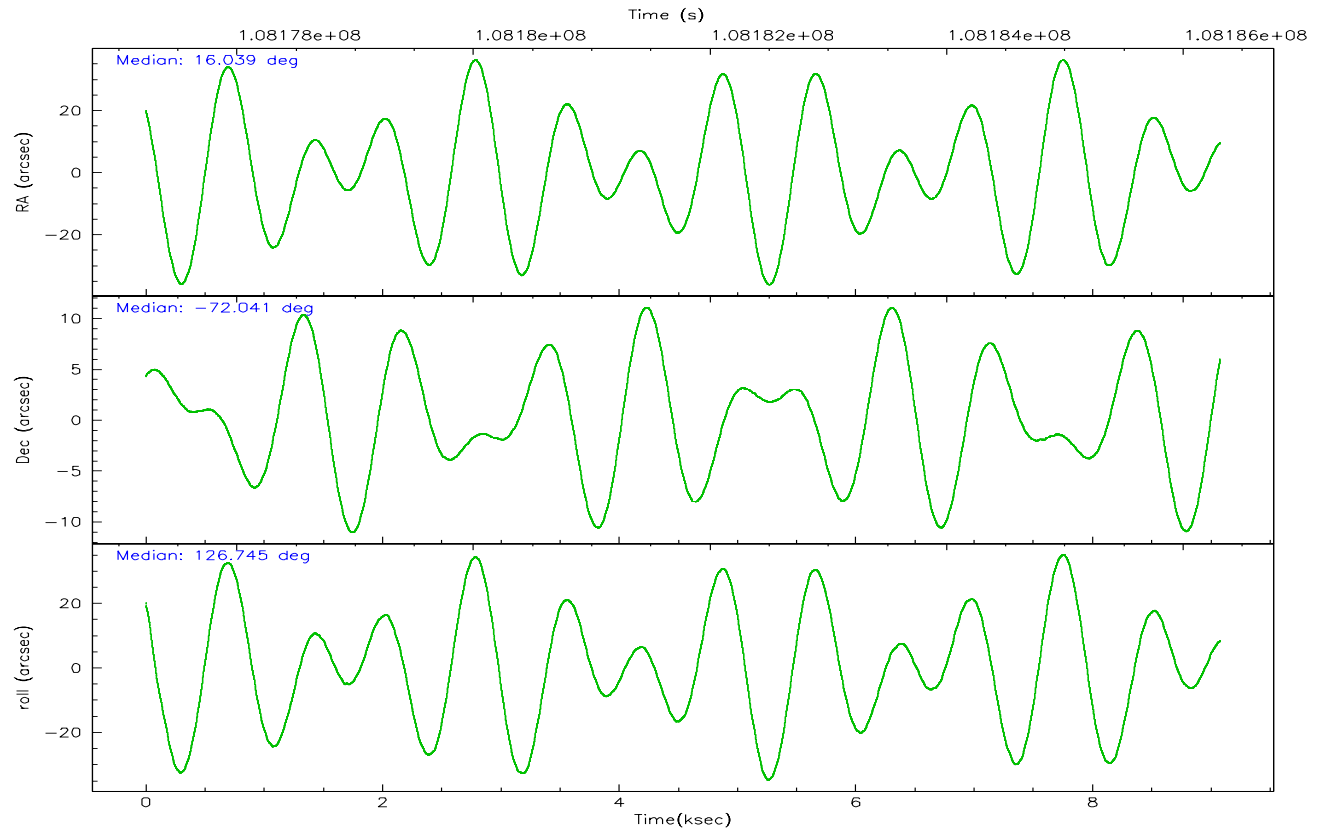
	ccd 2	ccd 3	ccd 5	ccd 6	ccd 7	ccd 8
grade 0 events	2472	2379	5121	3488	20222	4892
	4%	4%	6%	6%	15%	7%
grade 1 events	19	21	94	77	433	31
	0%	0%	0%	0%	0%	0%
grade 2 events	1219	1166	9787	1382	24434	2976
	2%	2%	13%	2%	18%	4%
grade 3 events	489	506	800	590	8874	1576
	0%	1%	1%	1%	6%	2%
grade 4 events	522	530	770	577	8760	1462
	1%	1%	1%	1%	6%	2%
grade 5 events	1751	1928	3461	2167	5559	2774
	3%	3%	4%	4%	4%	4%
grade 6 events	1026	990	17693	1217	25381	3558
	1%	2%	24%	2%	19%	5%
grade 7 events	44519	41108	35881	43879	35959	48527
	85%	84%	48%	82%	27%	73%

2.2 Compared Parameters

Parameter	Planned	Actual	Parameter	Planned	Actual
Instrument	ACIS	ACIS	Obspar format version number	6	6
Detector	ACIS-235678	ACIS-235678	Obspar file type	PREDICTED	ACTUAL
Grating	NONE	NONE	Obspar update status	NONE	UPDATED
Data mode	FAINT	FAINT	Number of optional ACIS chips dropped	0	0
Observation mode	POINTING	POINTING	On-chip summing requested	N	N
Pointing RA	16.120428	16.03861315742325	Subarray requested	NONE	NONE
Pointing Dec	-72.051560	-72.04110347123027	Alternating exposures requested	N	N
Pointing Roll	126.674971	126.7537691541508	Primary exposure time	0.000000	3.2
Window start time	107740864.184000	107740864.184000			
Window stop time	110246464.184000	110246464.184000			
SIM focus pos (mm)	-0.684267	-0.6828225247311905			
SIM defocus (mm)	0	0.001444936568705701			
SIM translation stage pos (mm)	-190.132523	-190.1425803651734			
SIM translation stage offset (mm)	0	0.01005778216563158			
Observation start time	108178556.184000	108177025.2351			
Observation start date	2001-06-06T01:34:52	2001-06-06T01:10:25			
Observation end time	108186311.184000	108186444.47297			
Observation end date	2001-06-06T03:44:07	2001-06-06T03:47:24			
Read mode	TIMED	TIMED			

2.3 Aspect



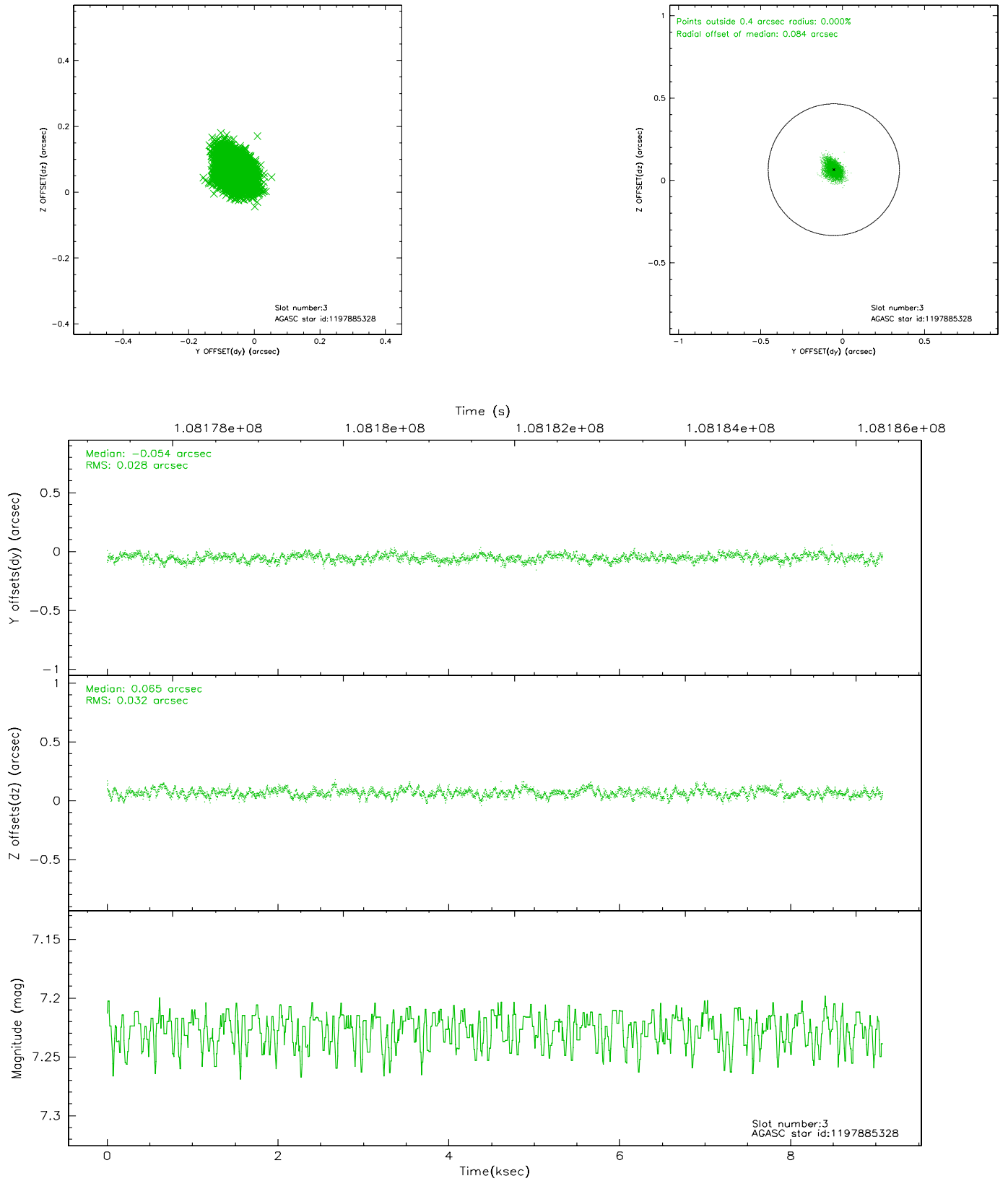


Slot Statistics

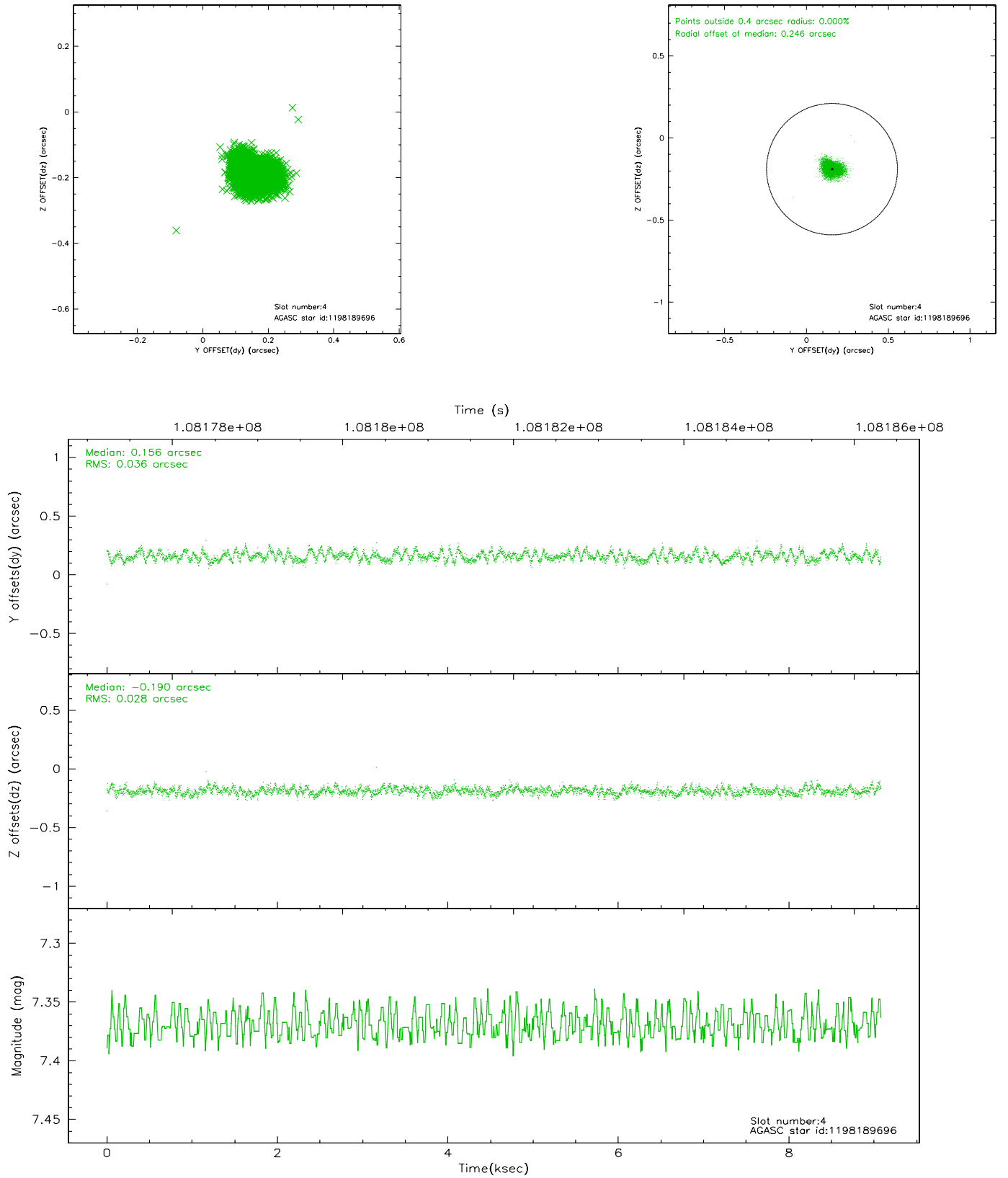
slot	status	id	mag	n_pts	med_dy	med_dz	dr1	dr2	ra	dec	mean_y	mean_z
0	FID	ACIS-S-2	7.12	2214	-0.016	0.035	0.007	0.012	0.000000	0.000000	-755.32	-1726.76
1	FID	ACIS-S-4	7.20	2214	-0.088	-0.001	0.005	0.009	0.000000	0.000000	2157.56	181.14
2	FID	ACIS-S-5	7.24	2214	0.074	-0.025	0.006	0.011	0.000000	0.000000	-1807.35	175.37
3	GUIDE	1197885328	7.23	4428	-0.054	0.065	0.044	0.075	16.283090	-71.733943	808.10	-829.97
4	GUIDE	1198189696	7.37	4428	0.156	-0.190	0.049	0.078	15.223750	-72.697522	-1296.73	2162.63
5	GUIDE	1197750936	7.58	4429	-0.171	0.088	0.047	0.073	15.387940	-71.549550	1944.20	-406.16
6	GUIDE	1197884536	8.51	4426	0.005	0.078	0.070	0.112	17.160729	-71.835289	-79.47	-1395.41
7	GUIDE	1197884712	8.30	4428	0.064	-0.038	0.062	0.100	16.087398	-72.252690	-558.33	461.08

2.4 Star Slots

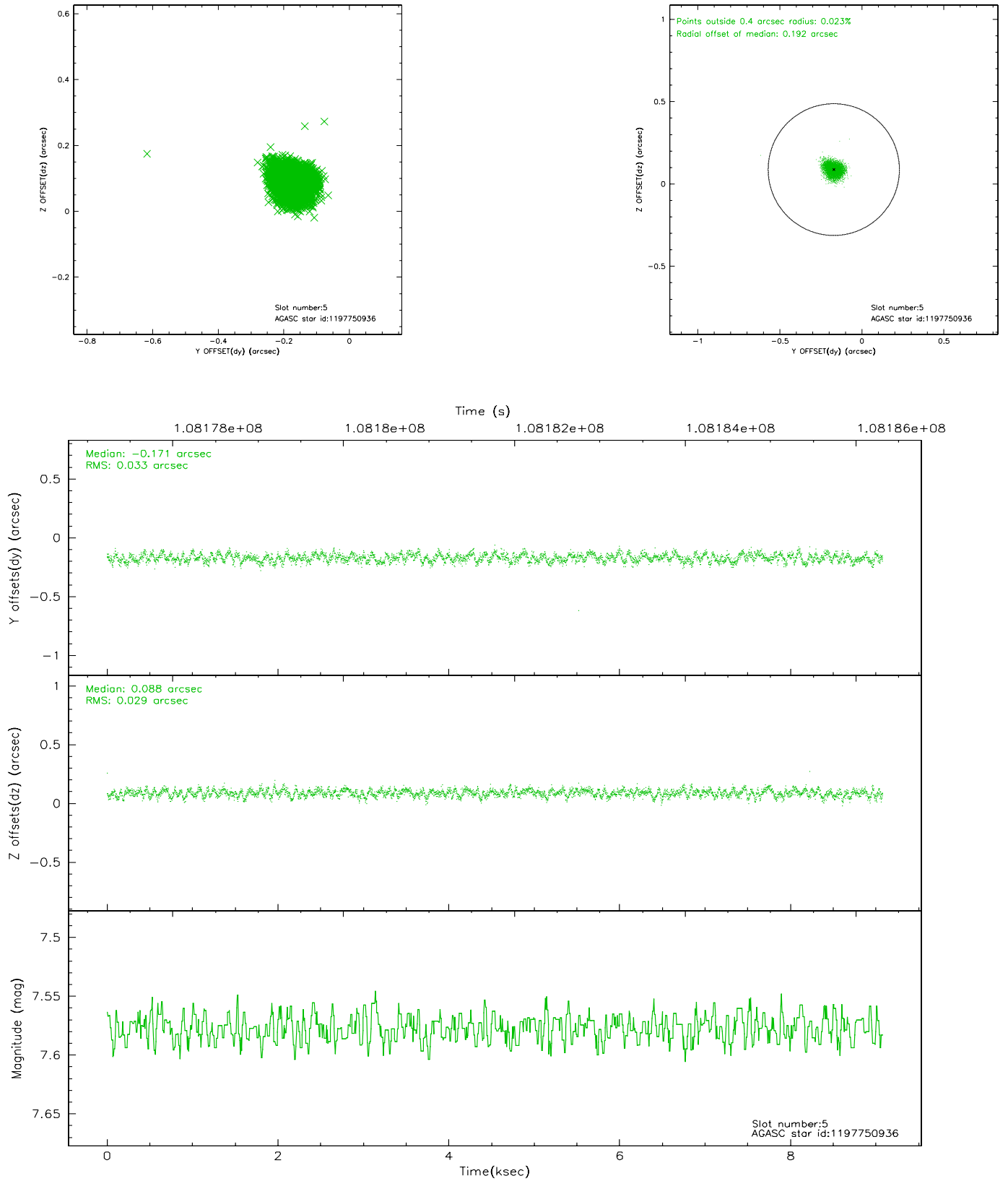
2.4.1 Slot 3



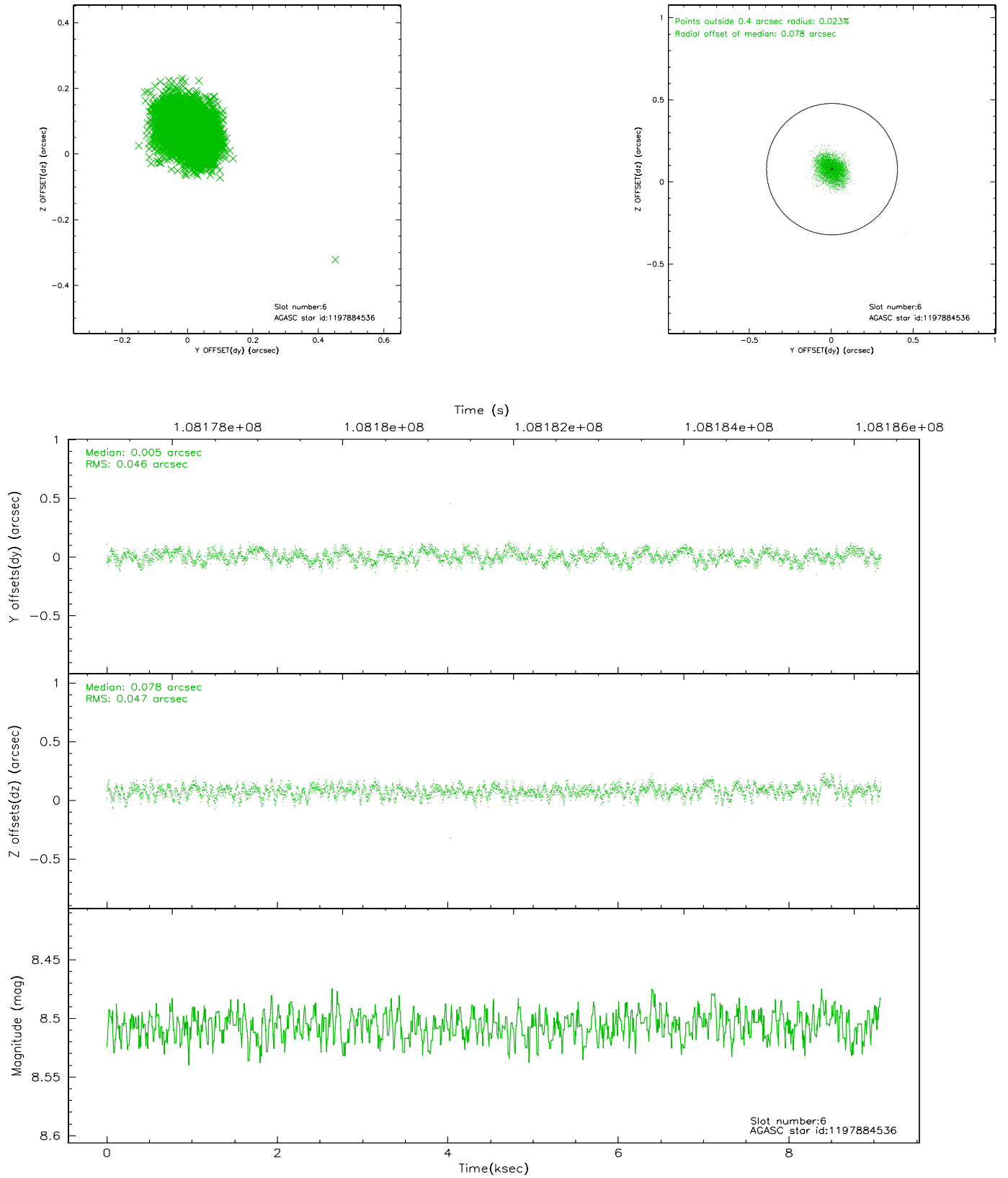
2.4.2 Slot 4



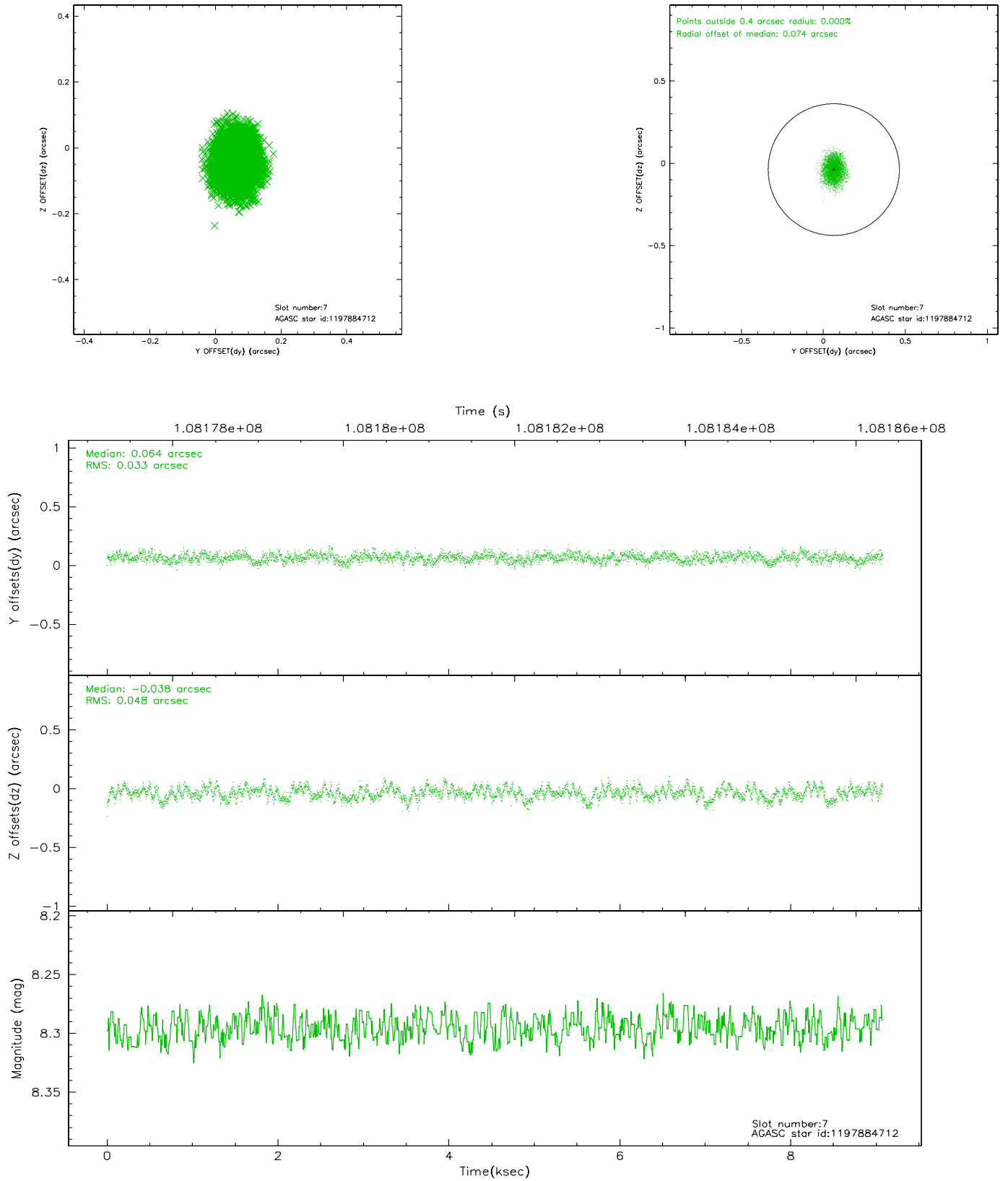
2.4.3 Slot 5



2.4.4 Slot 6

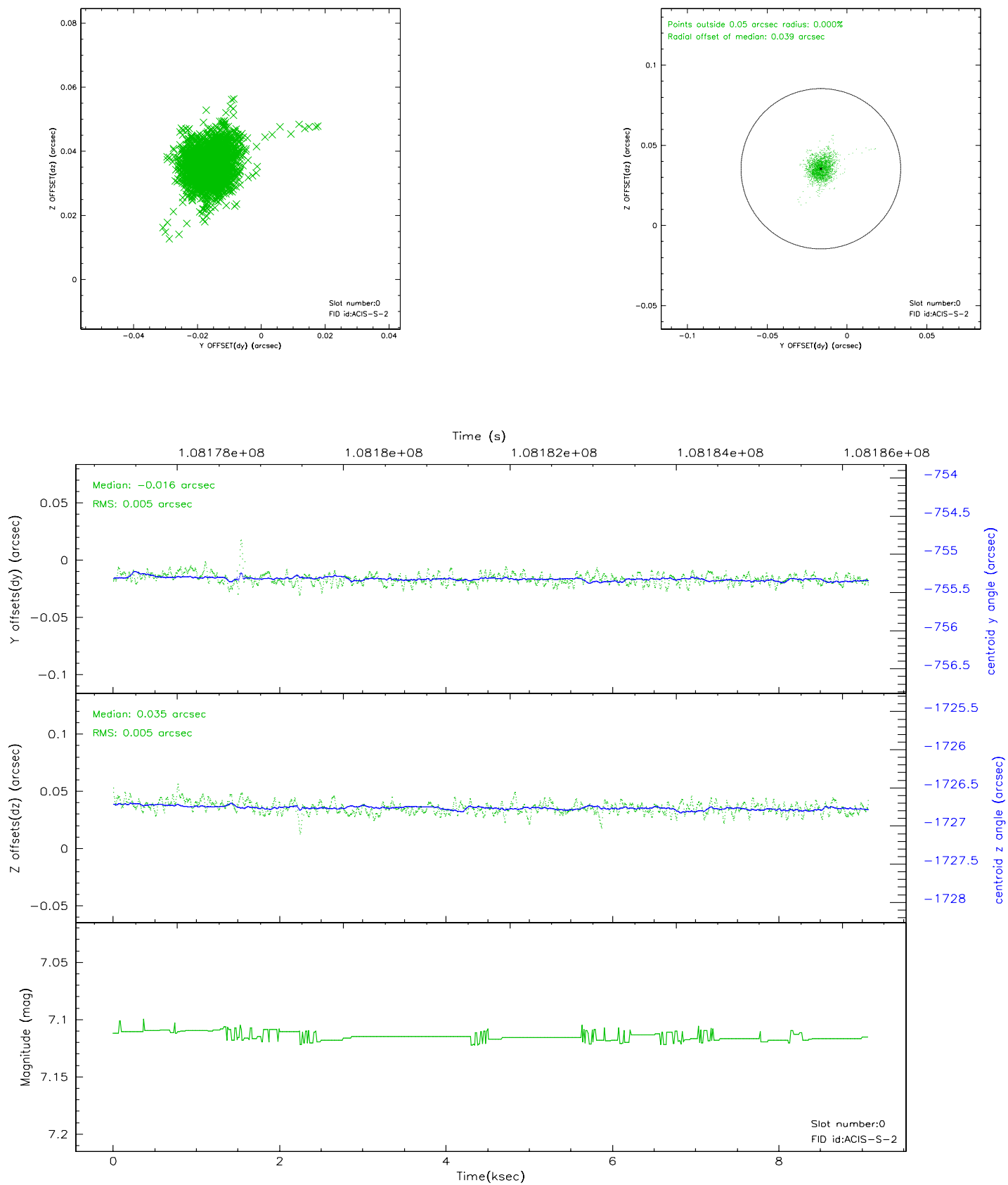


2.4.5 Slot 7

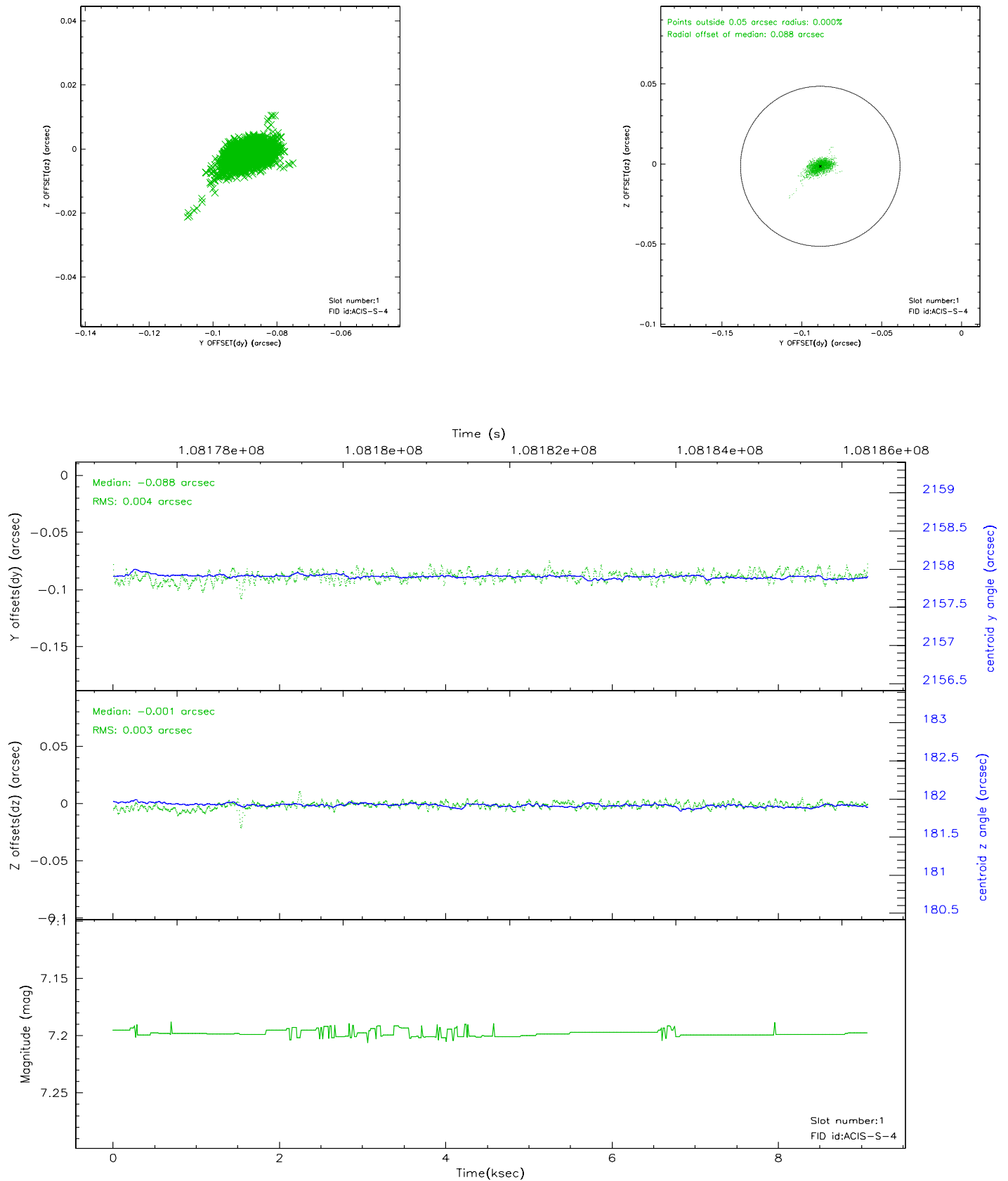


2.5 FID Slots

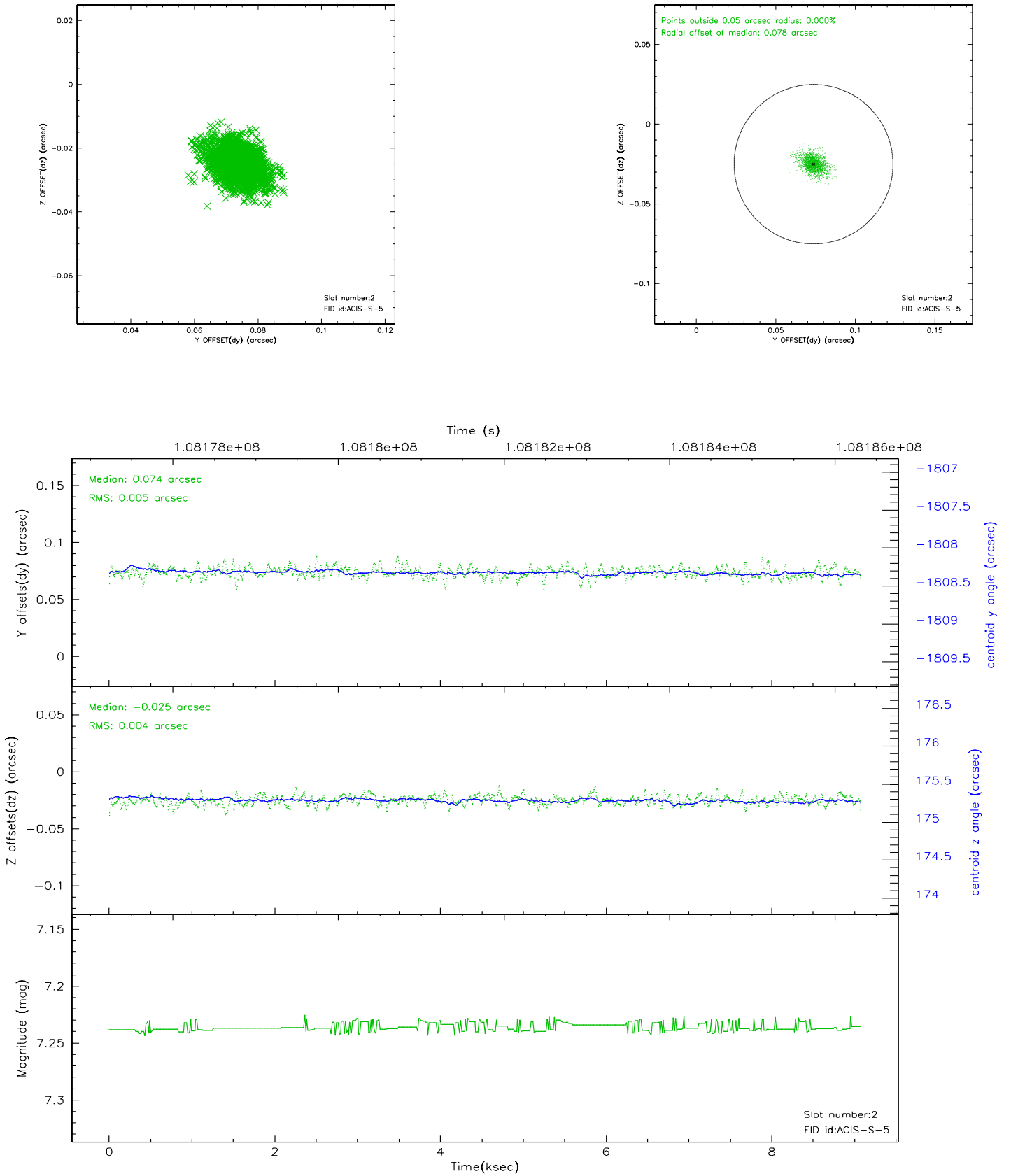
2.5.1 Slot 0



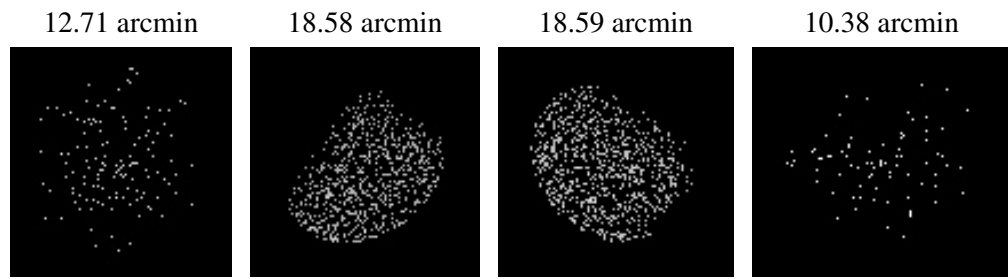
2.5.2 Slot 1



2.5.3 Slot 2



3 Point Sources



A Summary

A.1 Status

V&V Scientist	Beth Sundheim
V&V Date (YYYY-MM-DD)	2006.11.27
V&V Edition	1
V&V Disposition and Status	OK
V&V Charge Time	7.7

A.2 Comments

Window constraint OK.