

V&V Reference Report

L2 ASCDS Version : 8.5.1.1

Observation 15110 - L2 Version 3
Chandra X-Ray Center

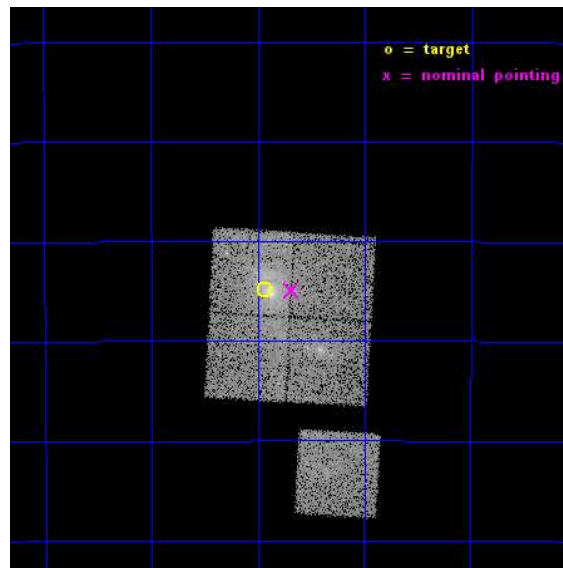
L2 Processing Date : Dec 3 2014

Contents

1	Front	2
2	OBI	3
2.1	OBI	3
2.1.1	Images	3
2.1.2	Bias	3
2.1.3	Parameters	4
2.1.4	Events	4
2.2	Compared Parameters	5
2.3	Aspect	6
2.4	Star Slots	9
2.4.1	Slot 3	9
2.4.2	Slot 4	10
2.4.3	Slot 5	11
2.4.4	Slot 6	12
2.4.5	Slot 7	13
2.5	FID Slots	14
2.5.1	Slot 0	14
2.5.2	Slot 1	15
2.5.3	Slot 2	16
A	Summary	17
A.1	Status	17
A.2	Comments	17

1 Front

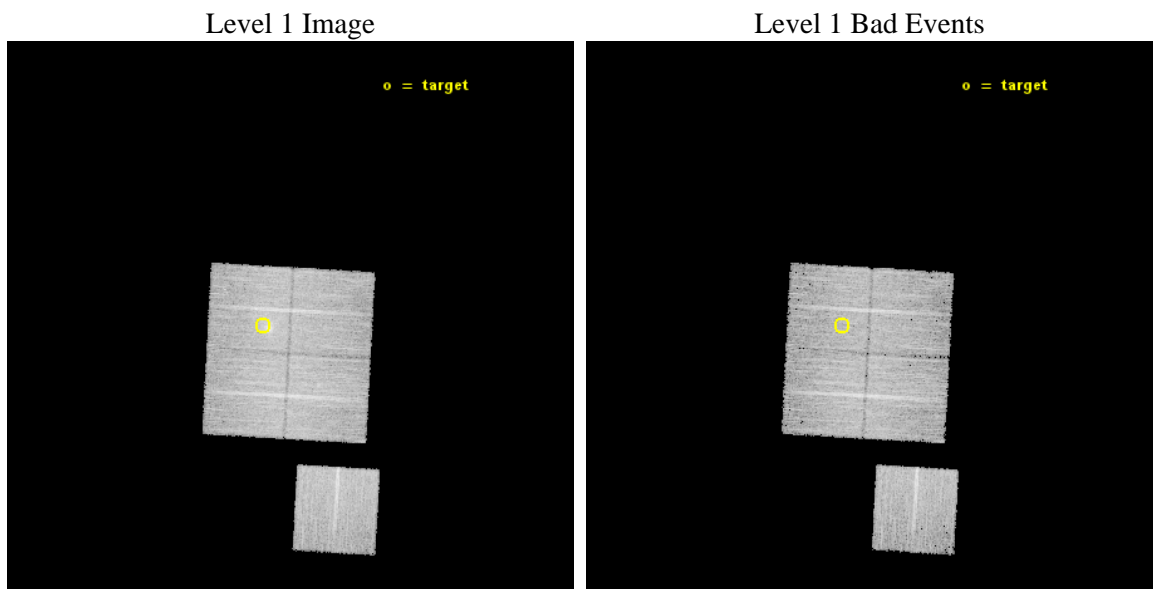
seq_num	801239	Sequence number
obs_id	15110	Observation id
title	A Chandra-Planck Legacy Program for Massive Clusters of Galaxies	P
observer	Dr. Christine Jones	Principal investigator
object	G256.45-65.71	Source name
dtcycle	0	
cycle	P	events from which exps? Prim/Second/Both
ra_targ	36.483333	Observer's specified target RA [deg]
dec_targ	-41.914722	Observer's specified target Dec [deg]
ra_nom	36.421398560807	Nominal RA [deg]
dec_nom	-41.915346202759	Nominal Dec [deg]
roll_nom	183.16730810174	Nominal Roll [deg]
revision	3	Processing version of data
ontime	15078.318165421	Sum of GTIs [s]
livetime	14881.308838094	Livetime [s]
ontime0	15081.459145665	Sum of GTIs [s]
ontime1	15078.318165421	Sum of GTIs [s]
ontime2	15081.459125757	Sum of GTIs [s]
ontime3	15084.600116014	Sum of GTIs [s]
ontime6	15084.600116014	Sum of GTIs [s]
l2events	51154	Number of level 2 events



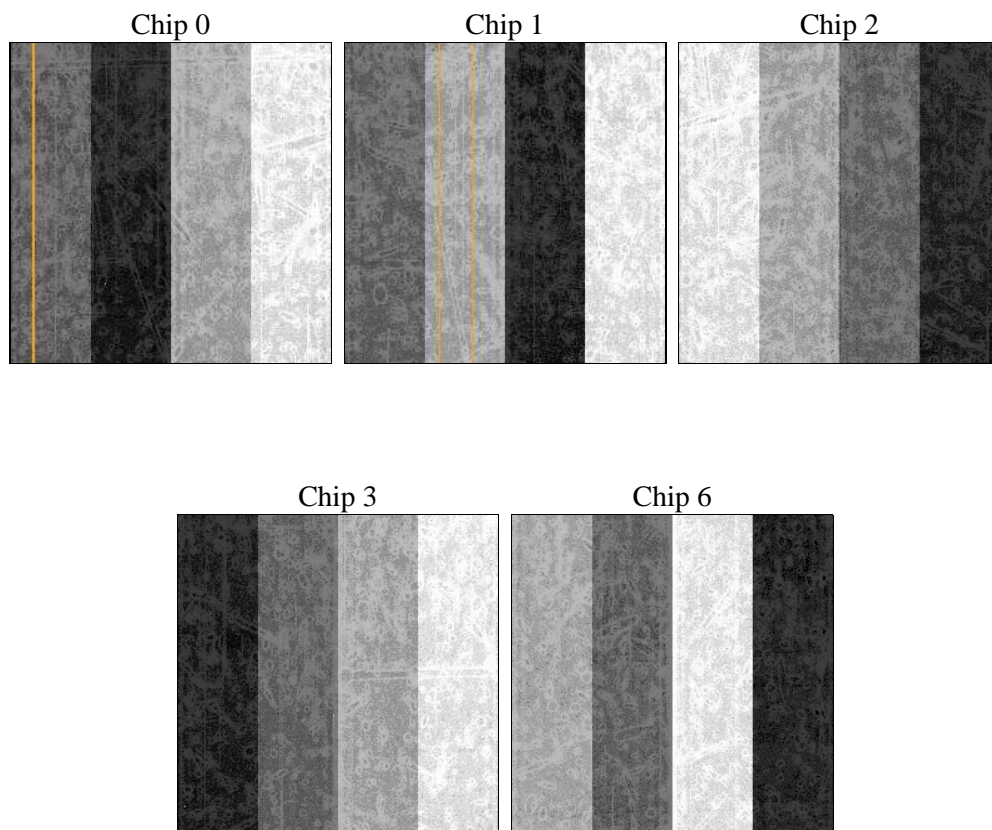
2 OBI

2.1 OBI

2.1.1 Images



2.1.2 Bias



2.1.3 Parameters

obi_num	0	Obi number	sched_exp_time	15000.000000	[s] Scheduled observation exposure time
ascdsver	10.3	Processing system revision	ontime	15078.318165421	Sum of GTIs [s]
caldbver	4.6.4	 	ontime0	15081.459145665	Sum of GTIs [s]
date	2014-12-03T06:09:46	Date and time of file creation	ontime1	15078.318165421	Sum of GTIs [s]
revision	3	Processing version of data	ontime2	15081.459125757	Sum of GTIs [s]
			ontime3	15084.600116014	Sum of GTIs [s]
			ontime6	15084.600116014	Sum of GTIs [s]
			l1events	401726	Number of level 1 events

2.1.4 Events

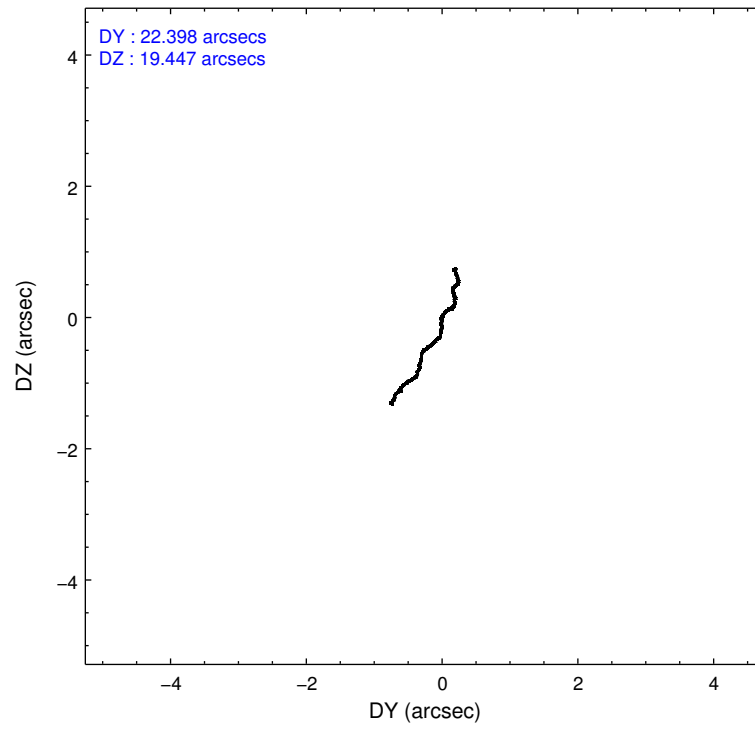
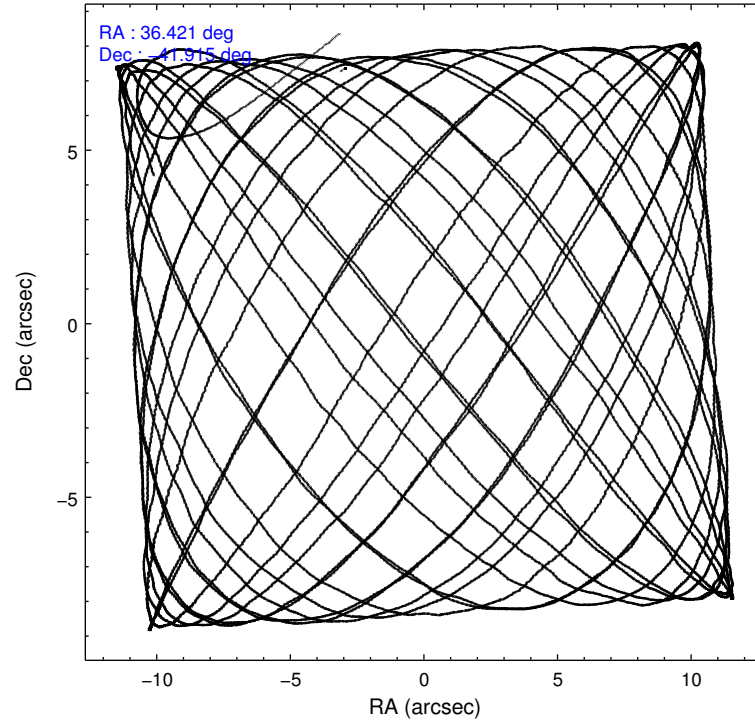
	ccd 0	ccd 1	ccd 2	ccd 3	ccd 6
level 1 events	73351	84664	82346	80244	81121
rejected events	63467	65344	71898	70283	71206
rejected %	86%	77%	87%	87%	87%

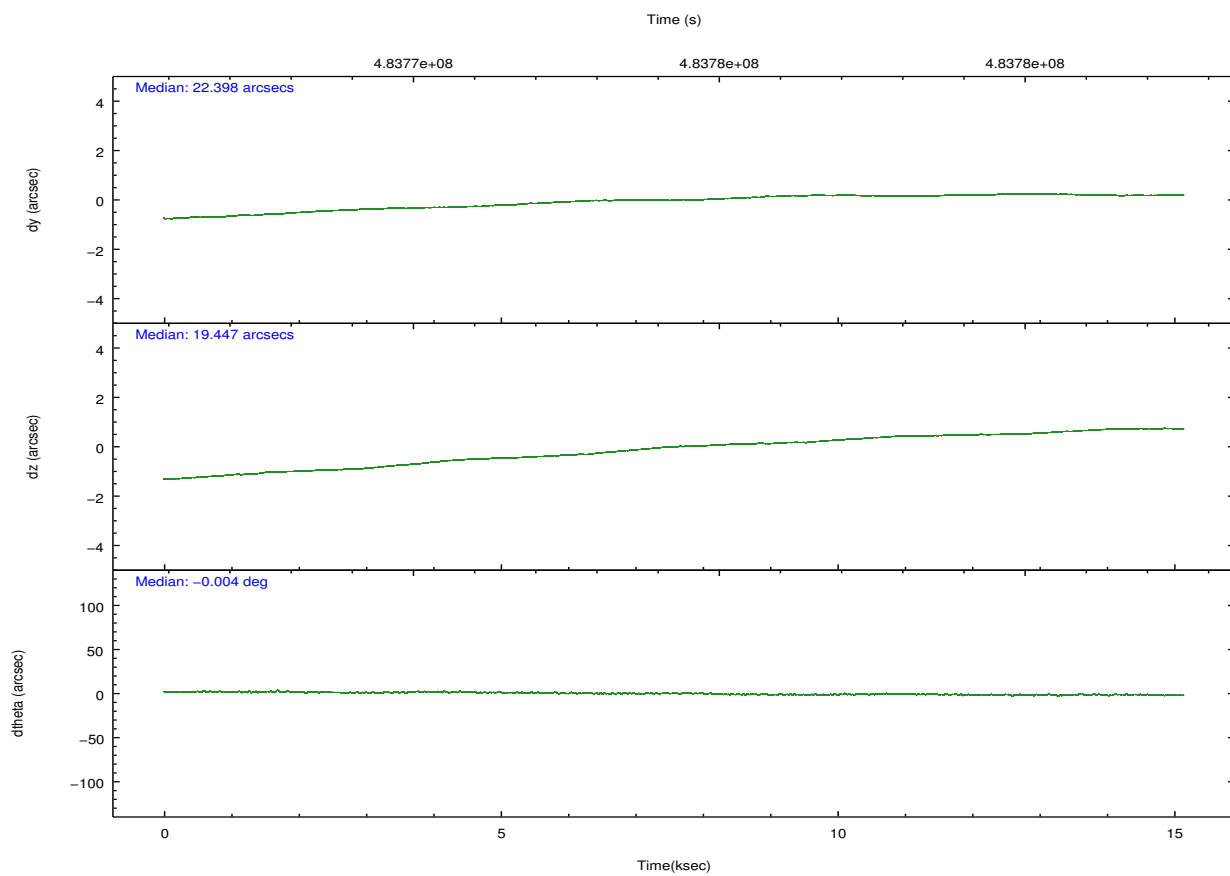
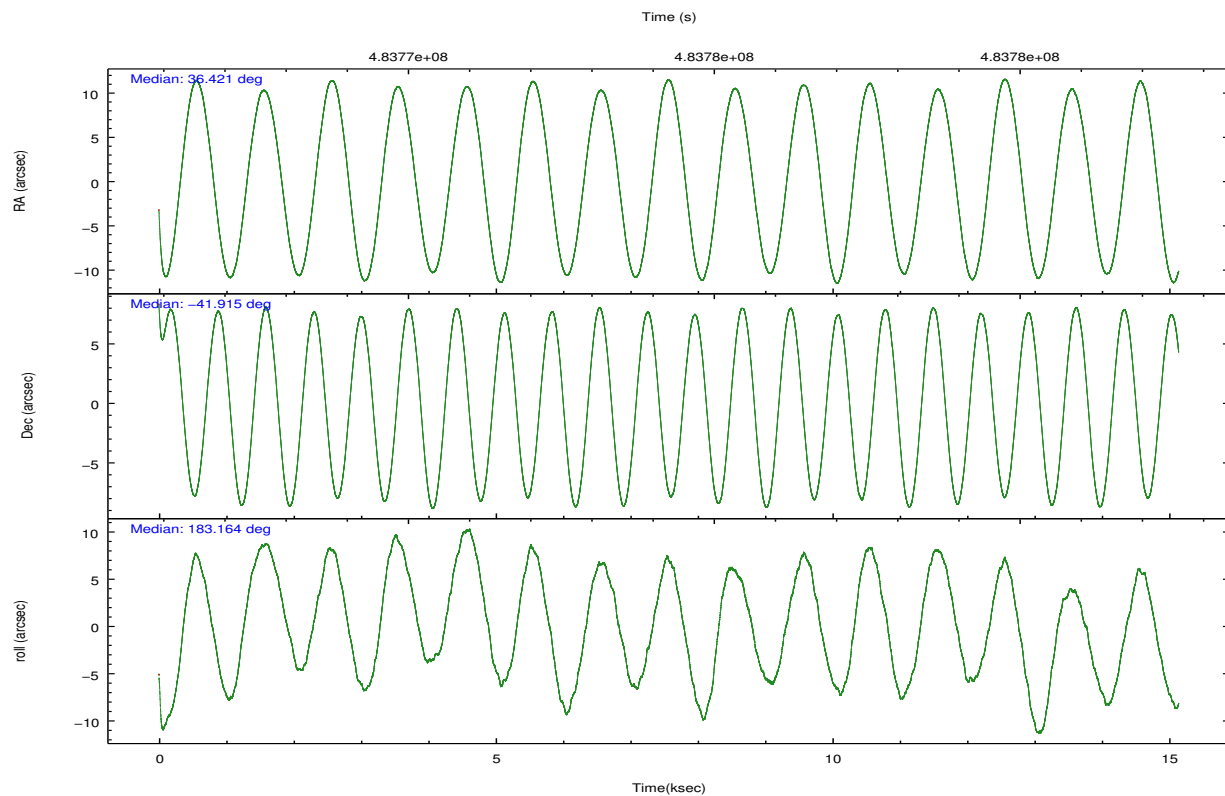
	ccd 0	ccd 1	ccd 2	ccd 3	ccd 6
grade 0 events	3585	10686	4316	3857	3359
	4%	12%	5%	4%	4%
grade 1 events	43	83	49	44	54
	0%	0%	0%	0%	0%
grade 2 events	2487	3502	2360	2127	2262
	3%	4%	2%	2%	2%
grade 3 events	1010	1311	977	973	1003
	1%	1%	1%	1%	1%
grade 4 events	872	1364	928	1014	996
	1%	1%	1%	1%	1%
grade 5 events	3769	4175	3481	4140	3984
	5%	4%	4%	5%	4%
grade 6 events	1931	2462	1871	1992	2298
	2%	2%	2%	2%	2%
grade 7 events	59654	61081	68364	66097	67165
	81%	72%	83%	82%	82%

2.2 Compared Parameters

Parameter	Planned	Actual	Parameter	Planned	Actual
Instrument	ACIS	ACIS	Obspar format version number	7	7
Detector	ACIS-01236	ACIS-01236	Obspar file type	PREDICTED	ACTUAL
Grating	NONE	NONE	Obspar update status	NONE	UPDATED
Data mode	VFAINT	VFAINT	CCD I0 on	Y	Y
Observation mode	POINTING	POINTING	CCD I1 on	Y	Y
[deg] Pointing RA	36.452271	36.42139856080746	CCD I2 on	Y	Y
[deg] Pointing Dec	-41.900245	-41.9153462027592	CCD I3 on	Y	Y
[deg] Pointing Roll	182.979249	183.1673081017426	CCD S0 on	N	N
[mm] SIM focus pos	-0.782348	-0.7809083437167272	CCD S1 on	N	N
[mm] SIM defocus	0	0.001439871863259334	CCD S2 on	O1	Y
[mm] SIM translation stage pos	-243.592463	-243.5843520998312	CCD S3 on	N	N
[mm] SIM translation stage offset	10	9.991899096901562	CCD S4 on	N	N
[s] Observation start time (MET)	483766820.184000	483765505.9648	CCD S5 on	N	N
Observation start date	2013-05-01T03:39:13	2013-05-01T03:18:25	Number of optional ACIS chips dropped	0	0
[s] Observation end time (MET)	483781820.184000	483783331.22827	On-chip summing requested	N	N
Observation end date	2013-05-01T07:49:13	2013-05-01T08:15:31	Subarray requested	NONE	NONE
Read mode	TIMED	TIMED	Alternating exposures requested	N	N
			[s] Primary exposure time	0.000000	3.1

2.3 Aspect



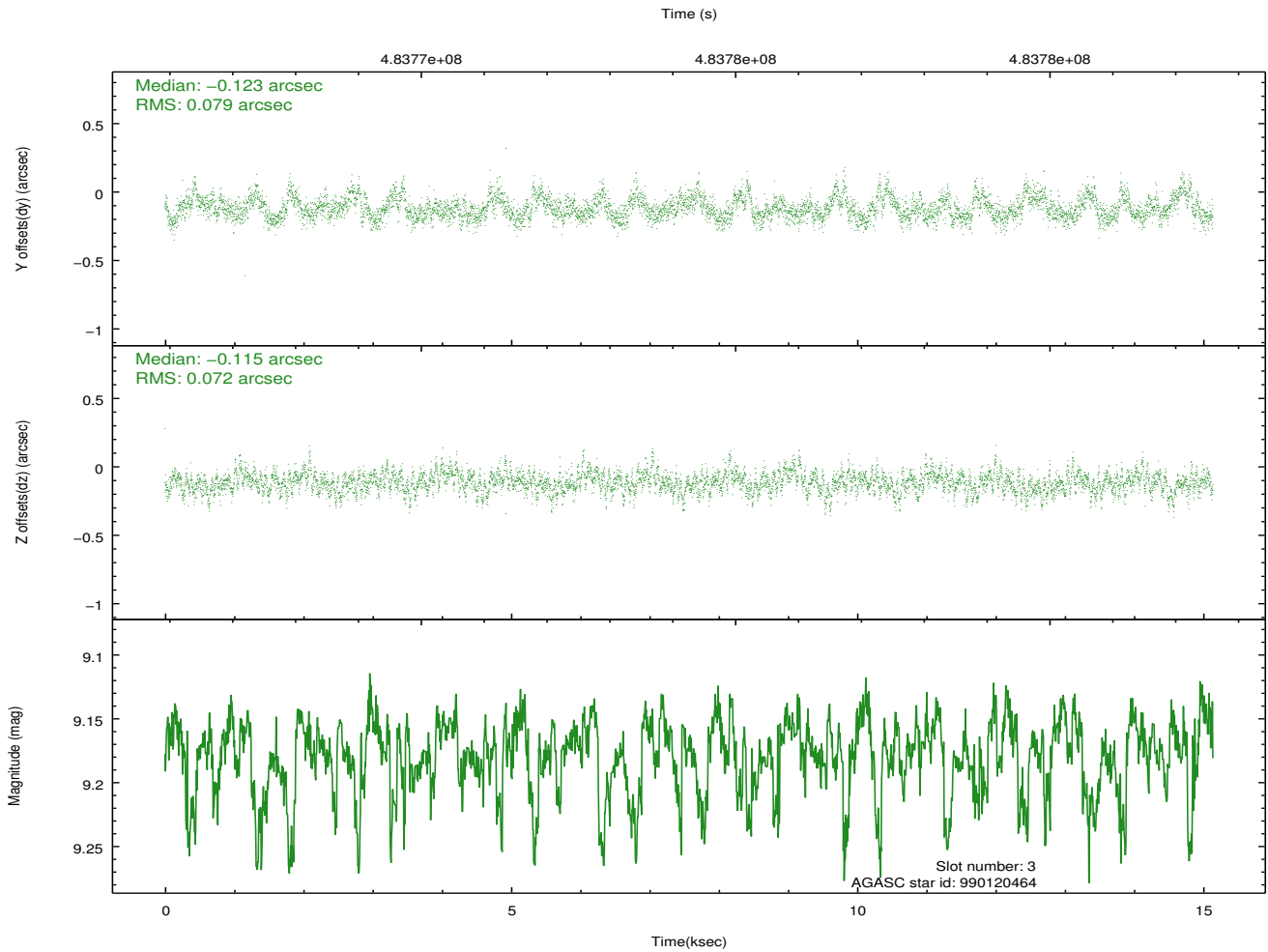
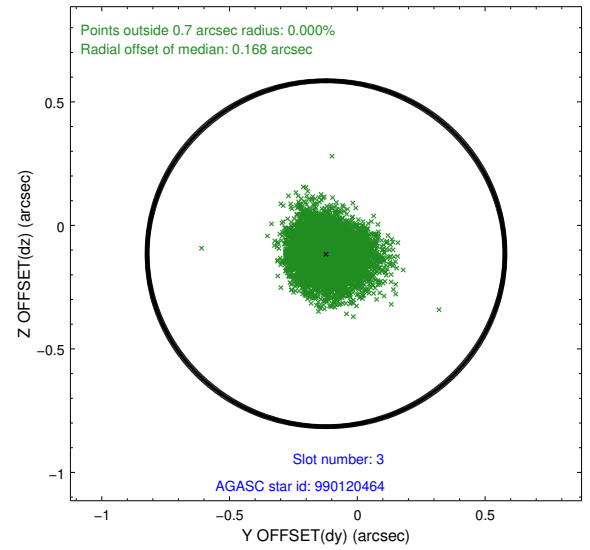
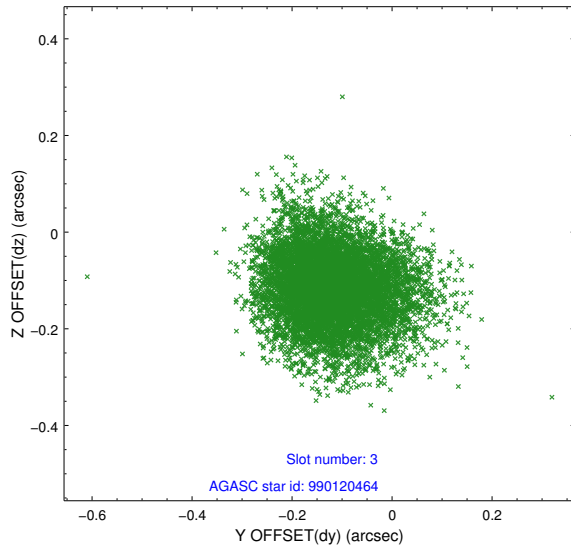


Slot Statistics

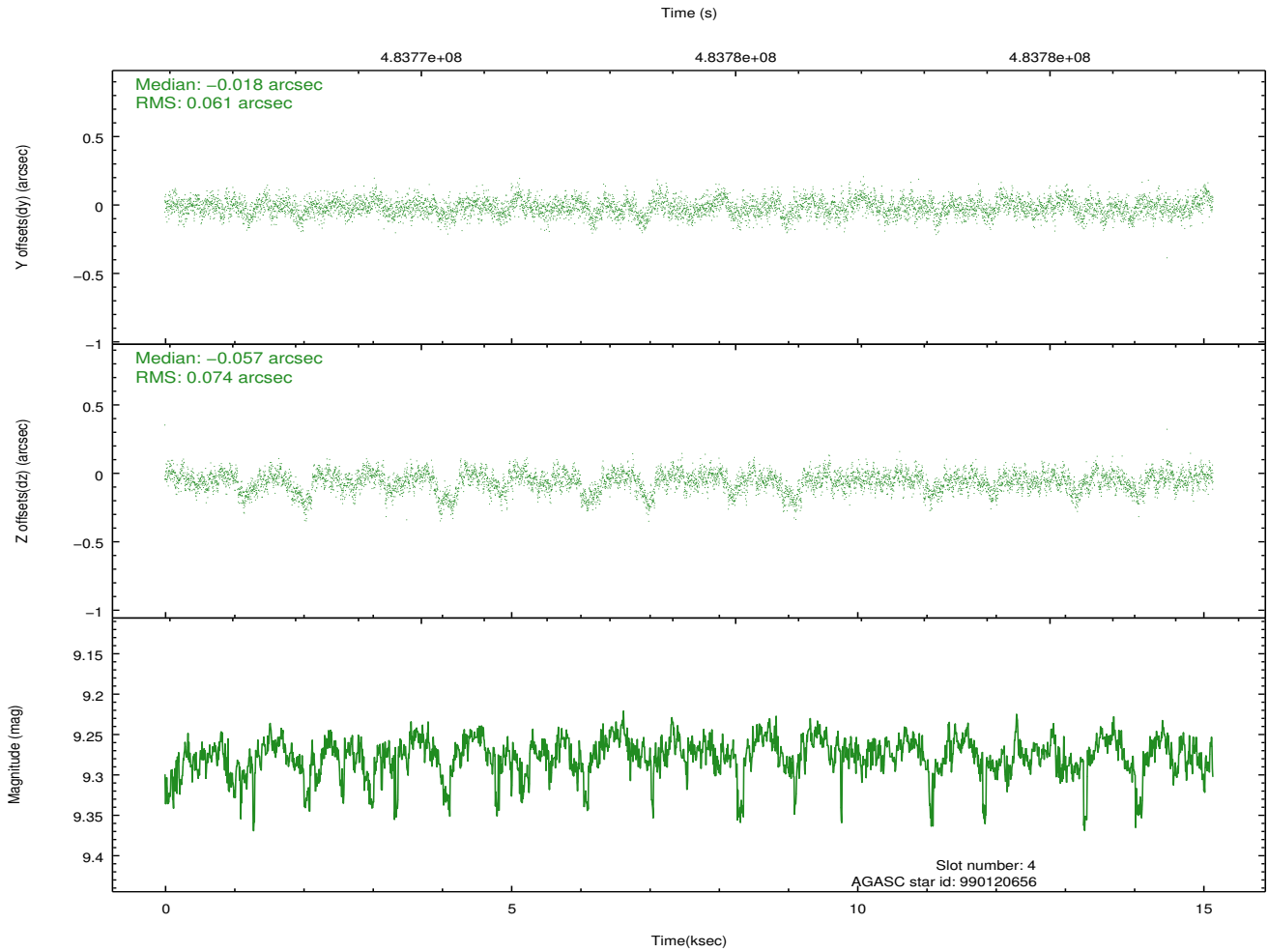
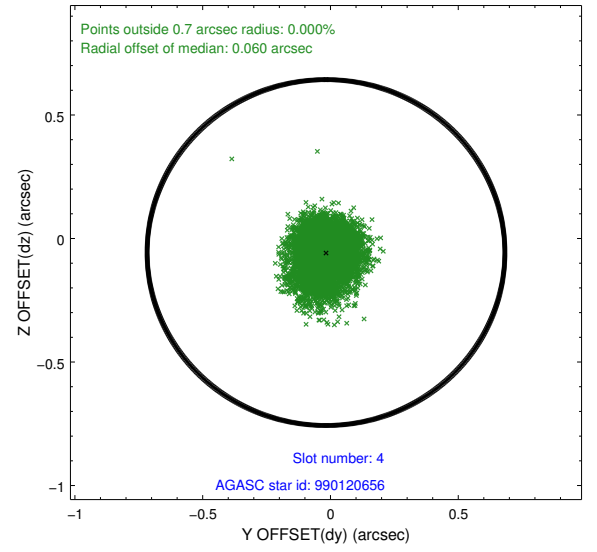
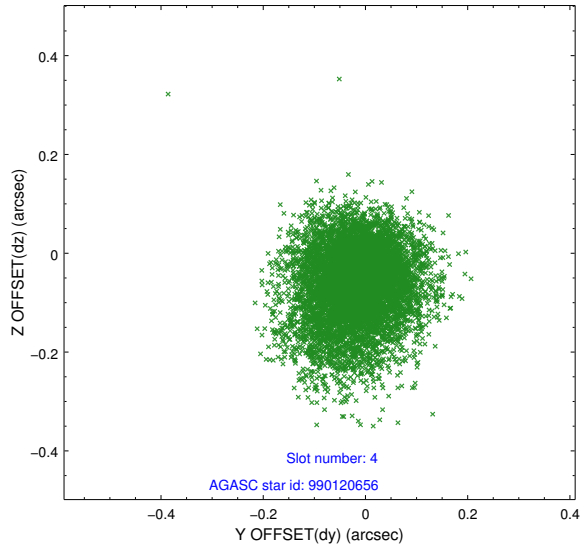
slot	status	used	id	mag	n_pts	med_dy	med_dz	dr1	dr2	ra	dec	mean_y	mean_z
0	FID		ACIS-I-1	7.14	3694	-0.013	0.097	0.034	0.044	0.000000	0.000000	917.14	-637.53
1	FID		ACIS-I-5	7.09	3694	-0.174	0.017	0.011	0.018	0.000000	0.000000	-1831.04	1259.68
2	FID		ACIS-I-6	7.07	3694	0.099	-0.047	0.029	0.046	0.000000	0.000000	382.37	1904.54
3	GUIDE	used	990120464	9.18	7365	-0.123	-0.115	0.113	0.184	35.748957	-41.990436	1896.84	234.65
4	GUIDE	used	990120656	9.28	7362	-0.018	-0.057	0.100	0.170	35.758117	-42.047149	1881.12	439.59
5	GUIDE	used	990251616	8.07	7384	0.029	-0.002	0.070	0.109	37.299909	-42.075422	-2229.43	759.89
6	GUIDE	used	990252000	8.40	7382	-0.037	-0.166	0.072	0.120	37.059802	-42.424951	-1513.78	1976.92
7	GUIDE	used	990252840	7.89	7383	0.137	0.341	0.067	0.107	36.693454	-41.366849	-750.54	-1881.95

2.4 Star Slots

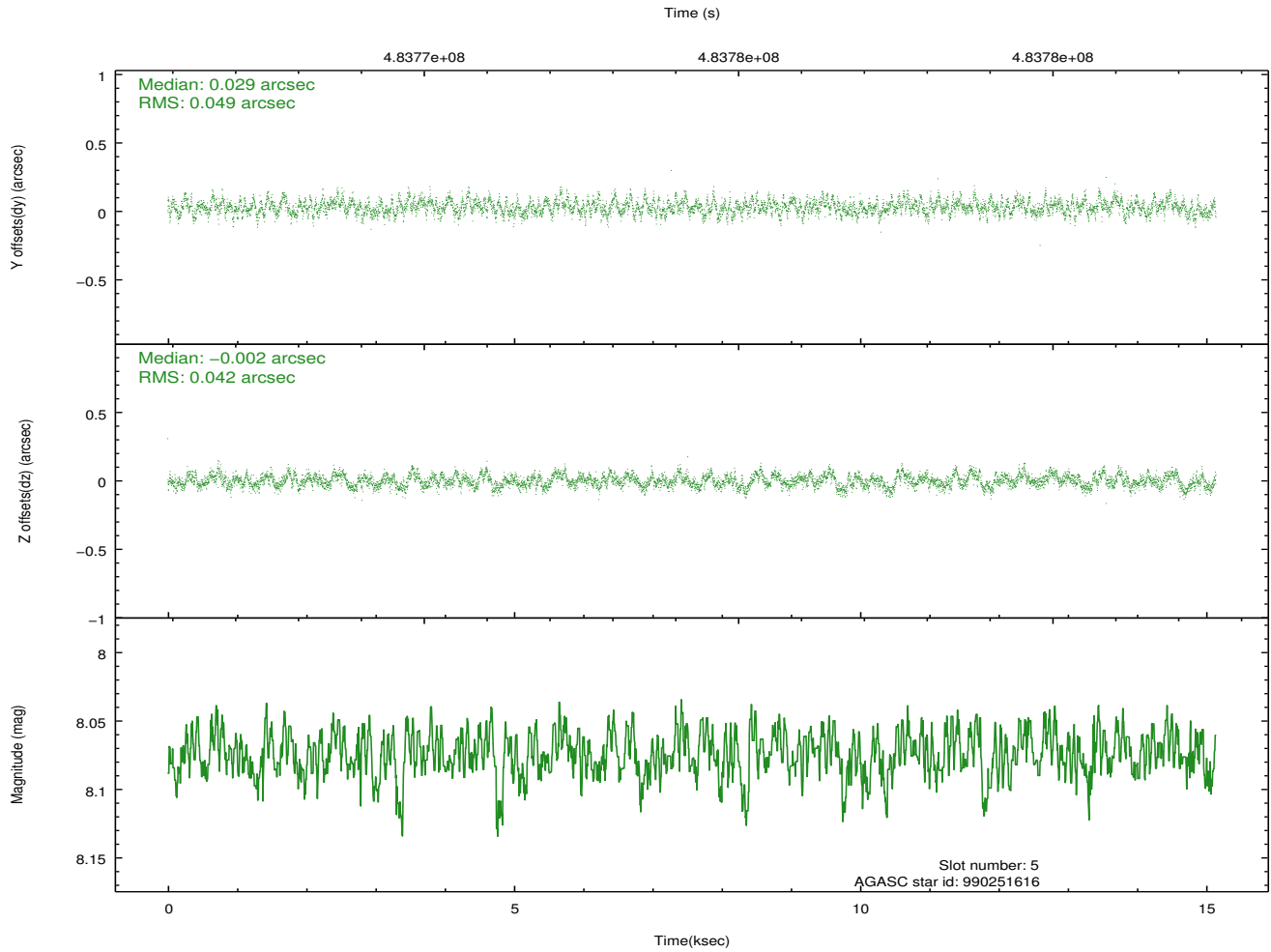
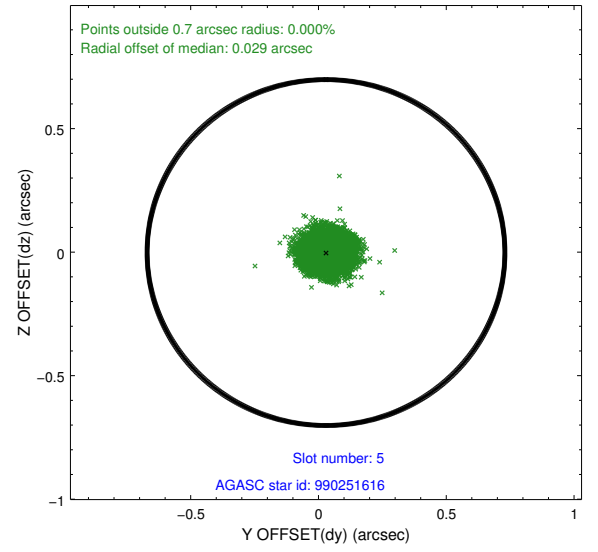
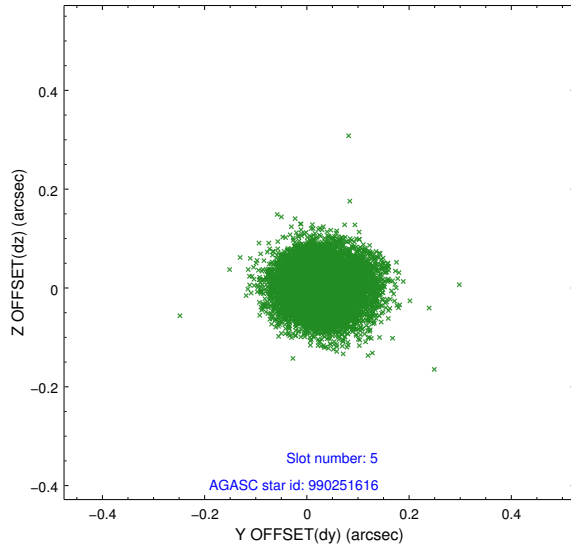
2.4.1 Slot 3



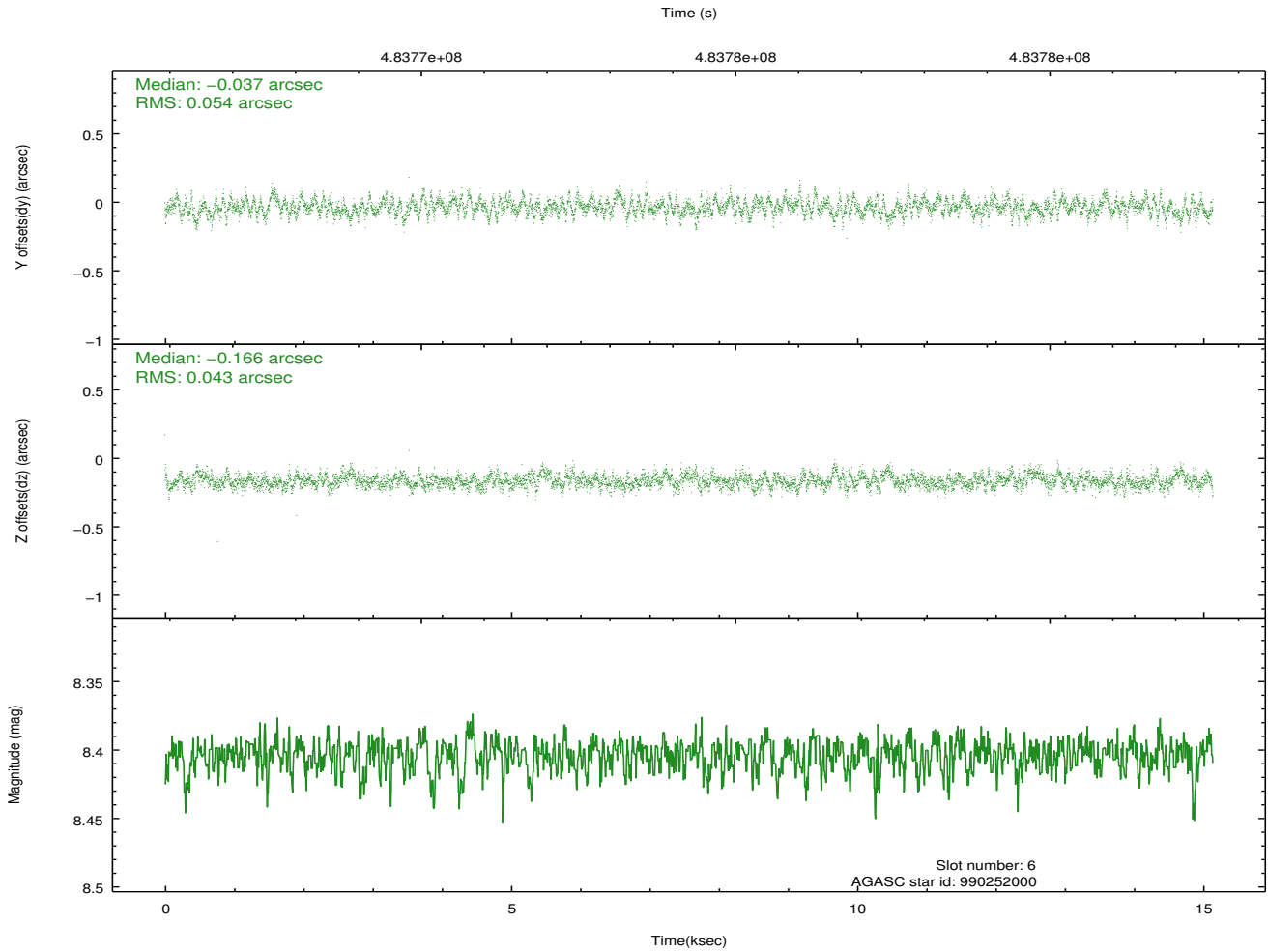
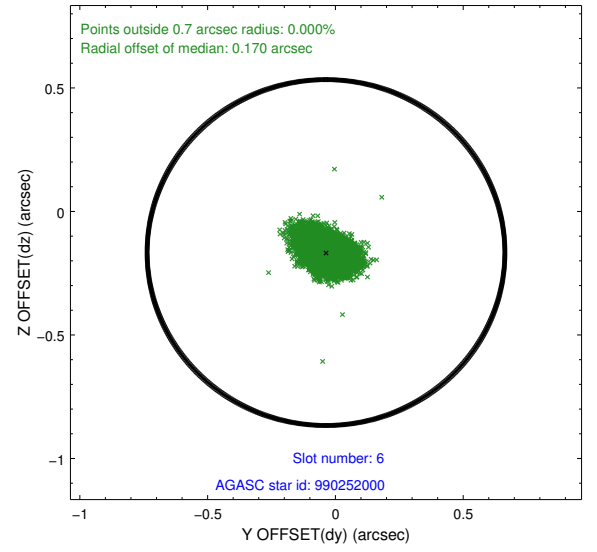
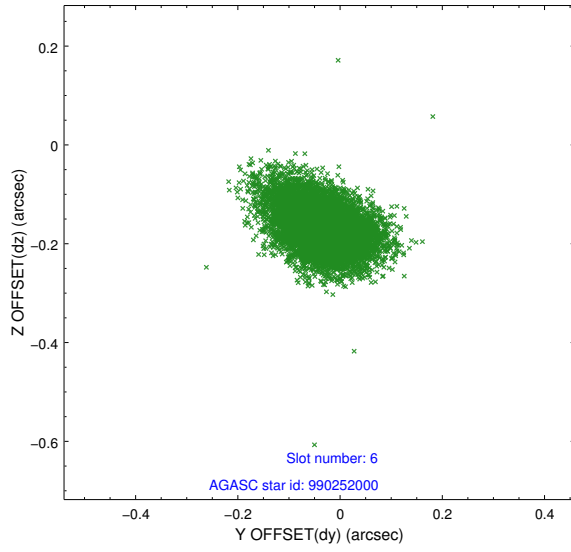
2.4.2 Slot 4



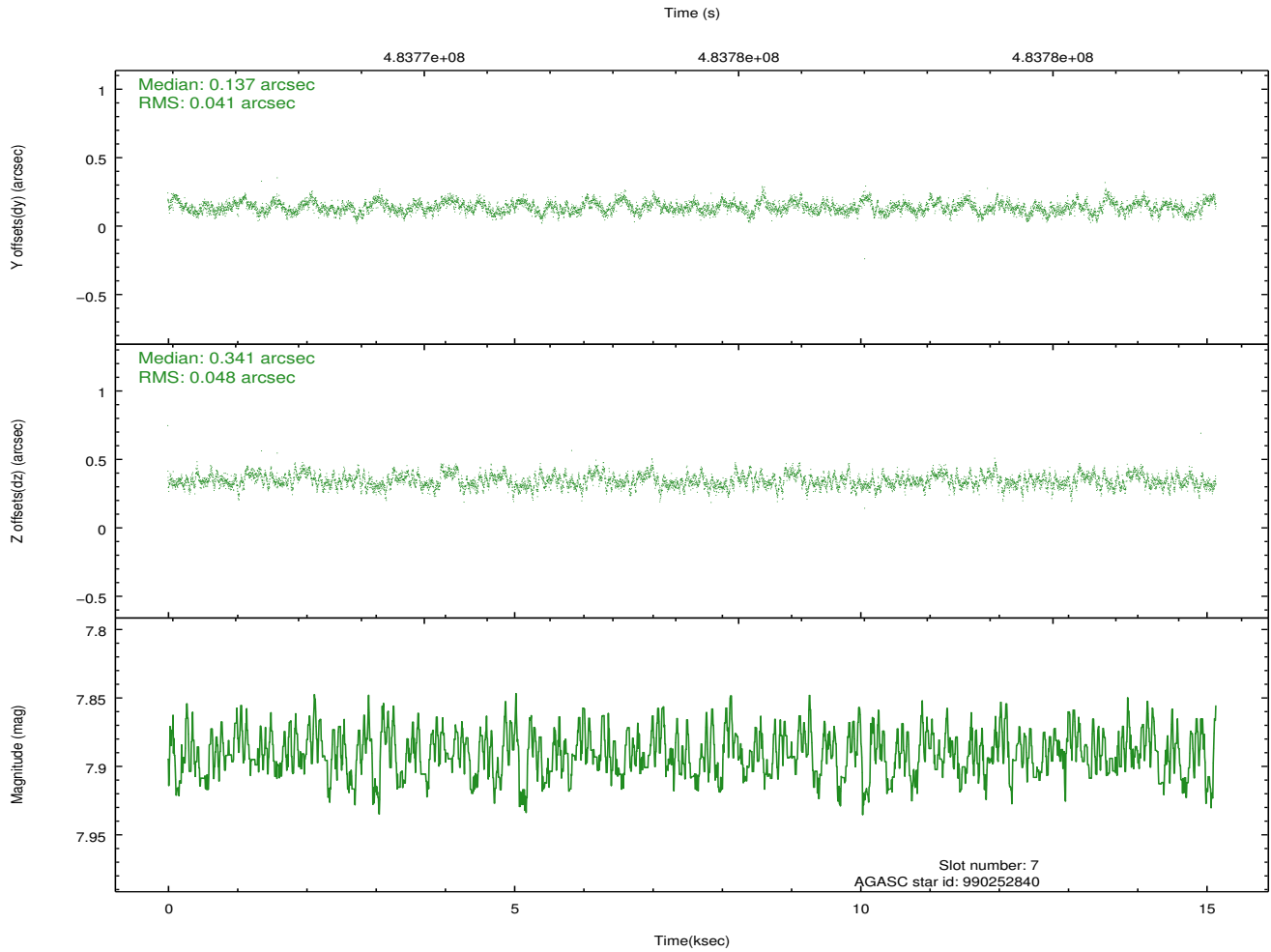
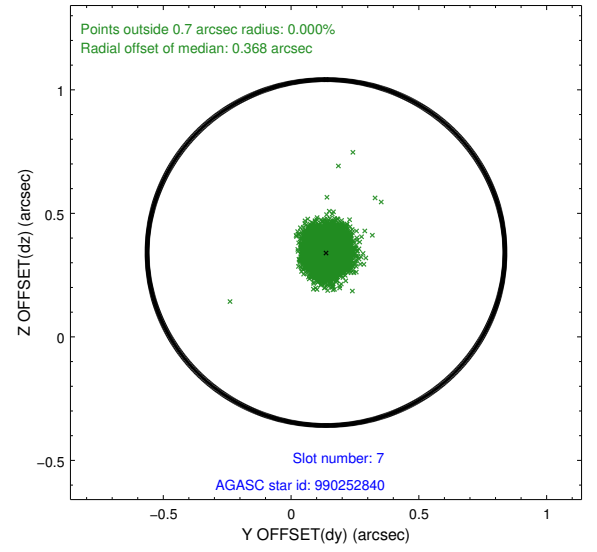
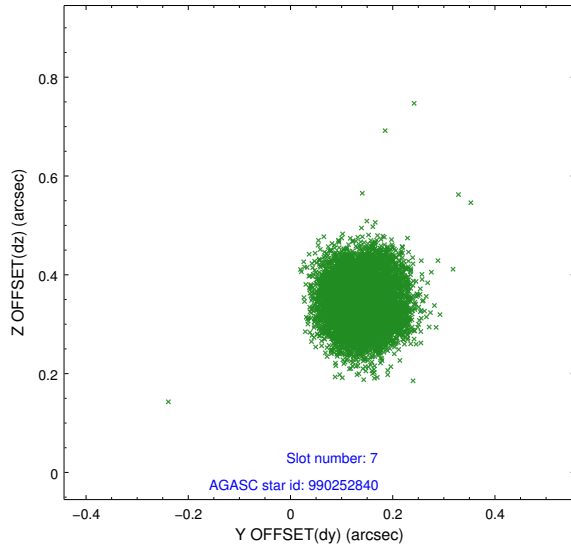
2.4.3 Slot 5



2.4.4 Slot 6

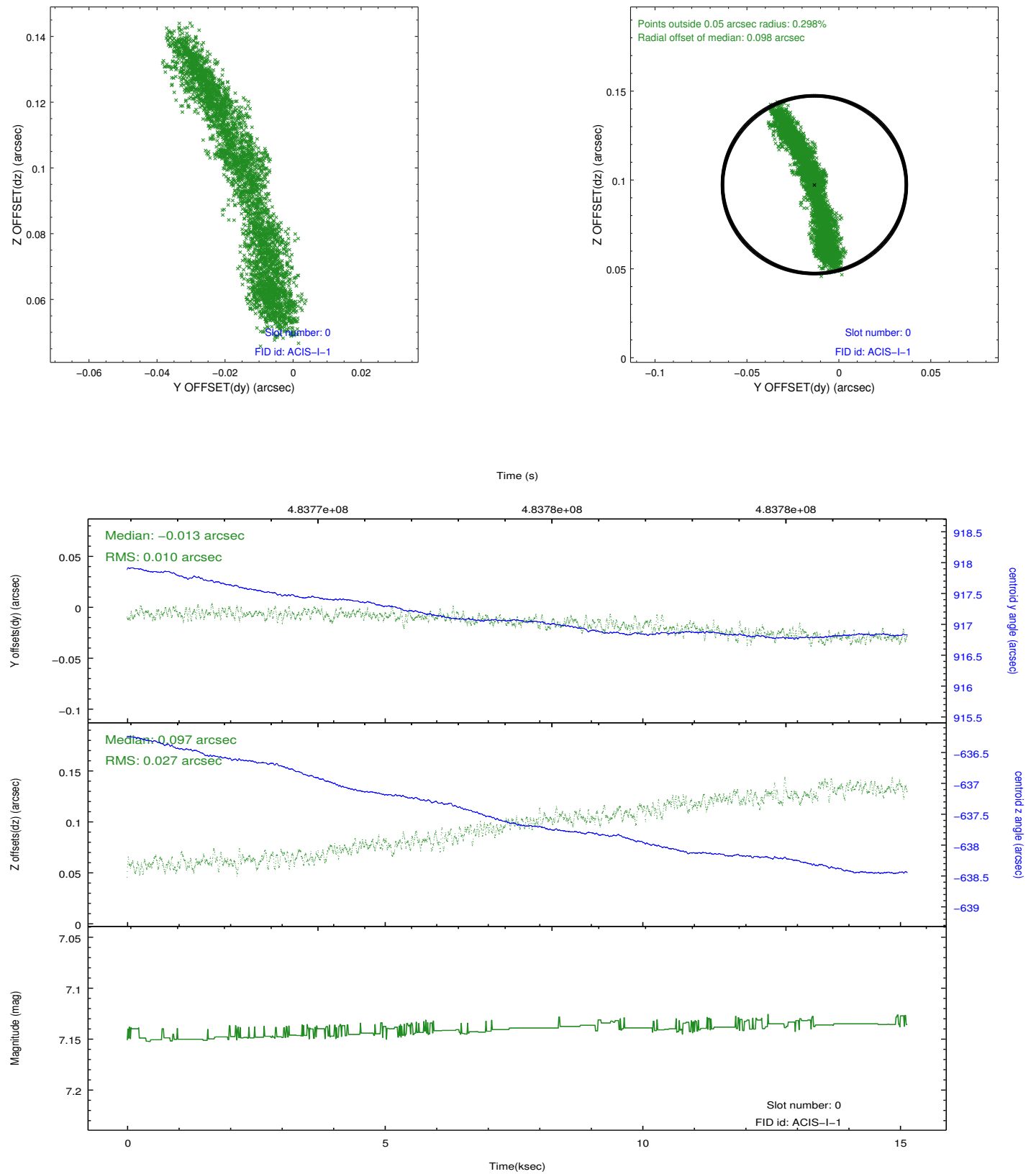


2.4.5 Slot 7

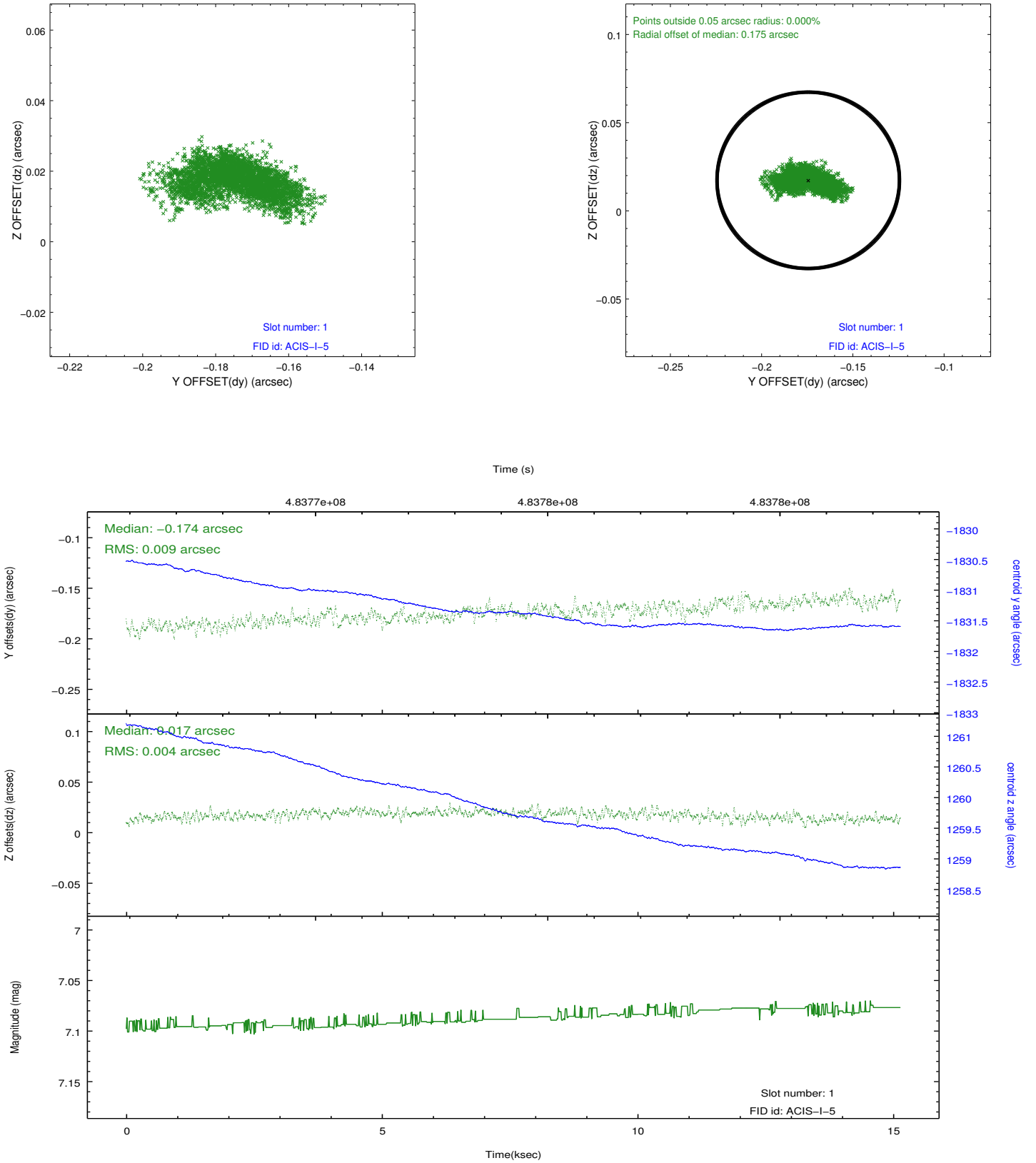


2.5 FID Slots

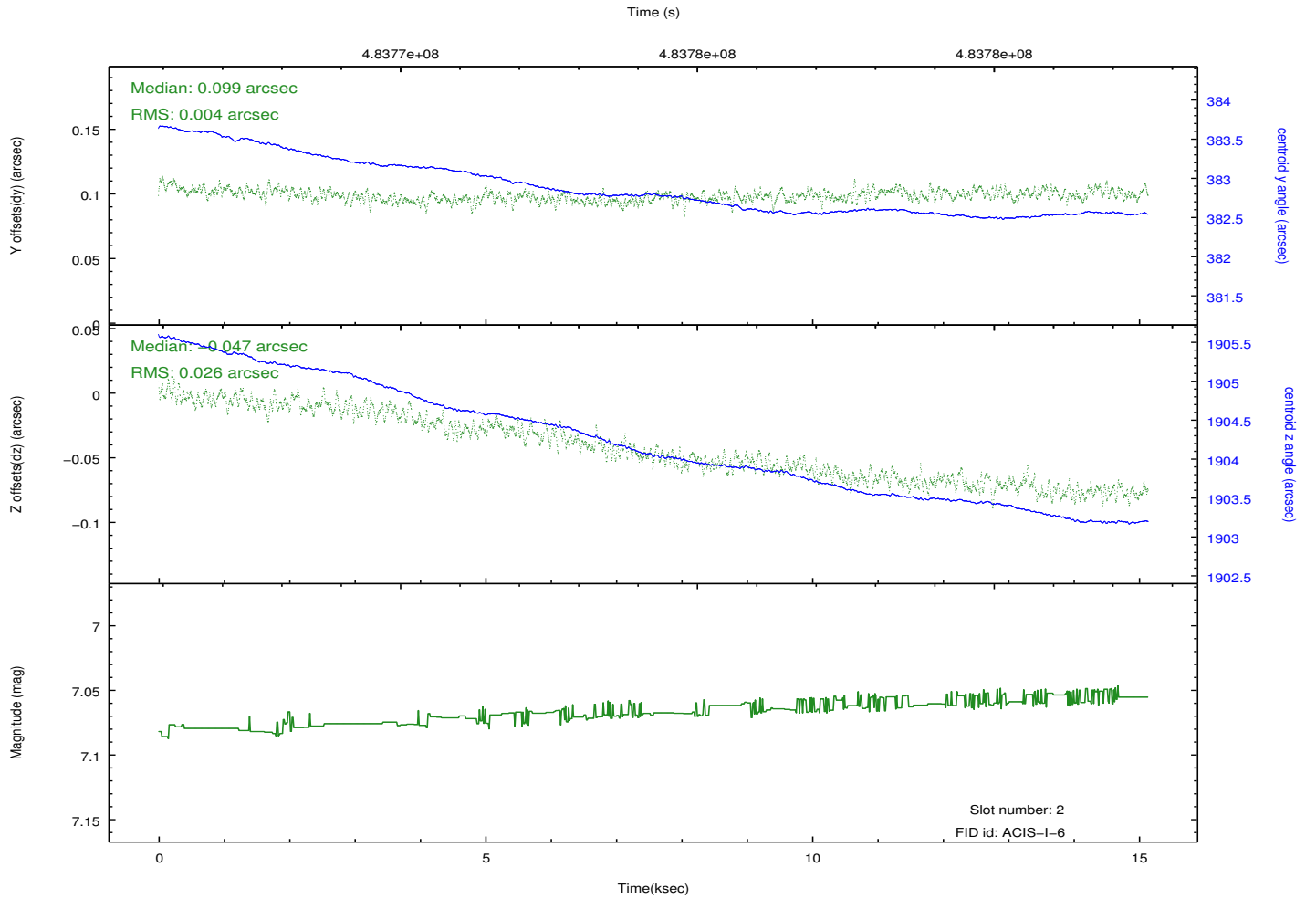
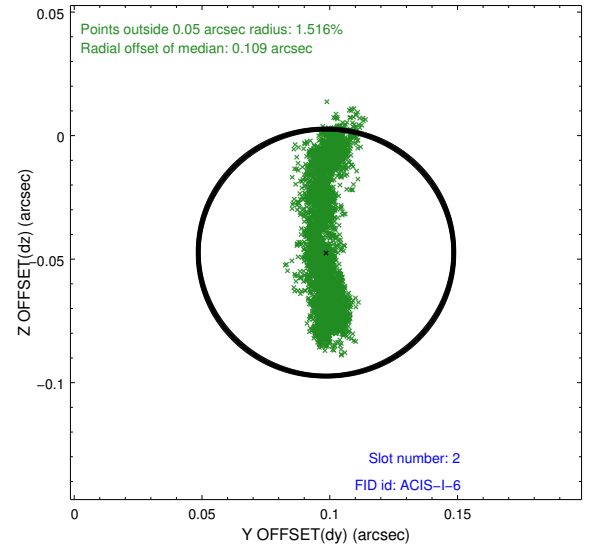
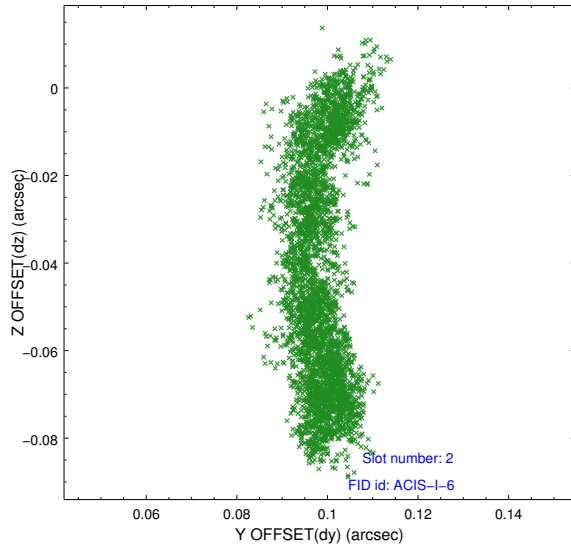
2.5.1 Slot 0



2.5.2 Slot 1



2.5.3 Slot 2



A Summary

A.1 Status

V&V Scientist	Beth Sundheim
V&V Date (YYYY-MM-DD)	2014.12.10
V&V Edition	1
V&V Disposition and Status	OK
V&V Charge Time	15.078318165421

A.2 Comments

These data have been reprocessed with new aspect alignment calibration files that correct small mean offsets (up to 0.4 arcsecs) and improve overall astrometric accuracy. The new calibration was determined using data from the time period being reprocessed and was performed using cross-correlation of X-ray sources with radio and optical counterparts.