

V&V Reference Report

L2 ASCDS Version : 8.4.3

Observation 14270 - L2 Version 1
Chandra X-Ray Center

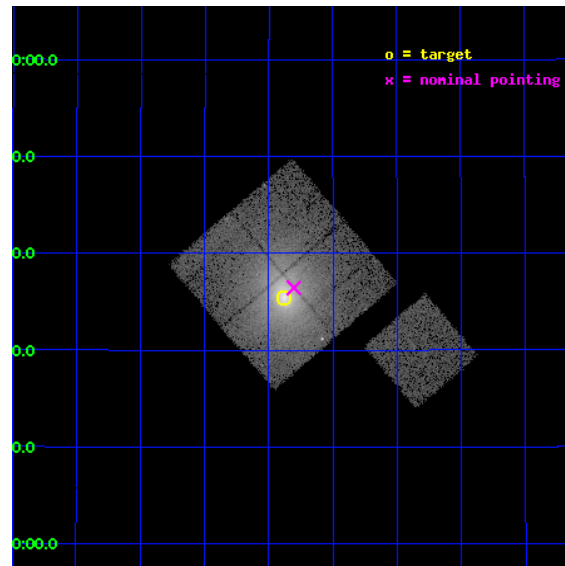
L2 Processing Date : Mar 26 2012

Contents

1	Front	2
2	OBI	3
2.1	OBI	3
2.1.1	Images	3
2.1.2	Bias	3
2.1.3	Parameters	4
2.1.4	Events	4
2.2	Compared Parameters	5
2.3	Aspect	6
2.4	Star Slots	9
2.4.1	Slot 3	9
2.4.2	Slot 4	10
2.4.3	Slot 5	11
2.4.4	Slot 6	12
2.4.5	Slot 7	13
2.5	FID Slots	14
2.5.1	Slot 0	14
2.5.2	Slot 1	15
2.5.3	Slot 2	16
A	Summary	17
A.1	Status	17
A.2	Comments	17

1 Front

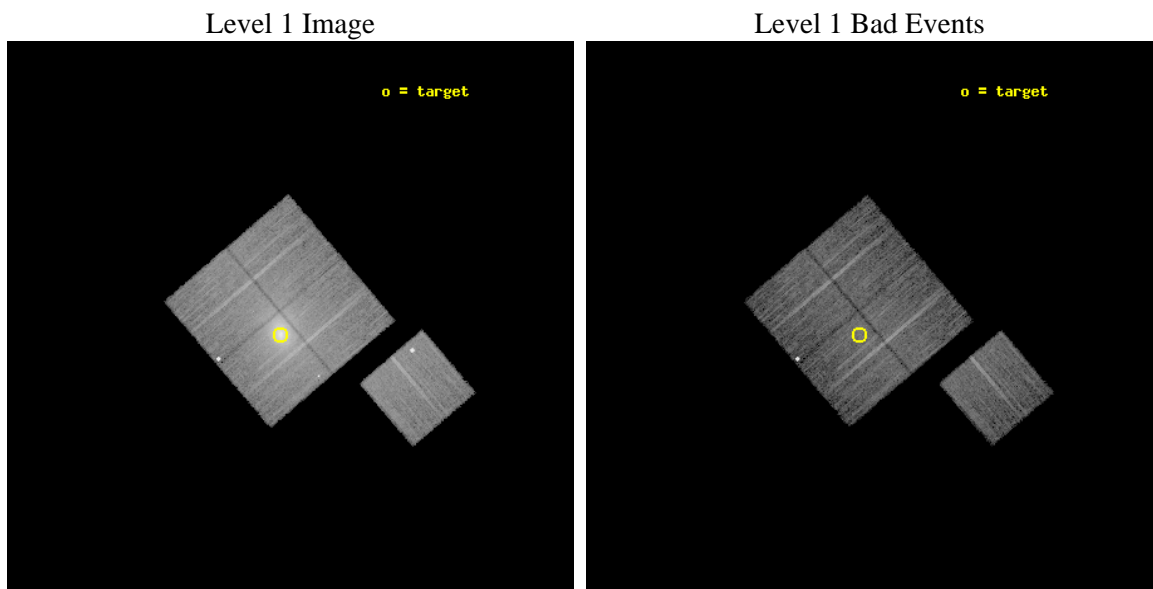
seq_num	890065	Sequence number
obs_id	14270	Observation id
title	AO-13 Calibration Observations of A1795	Proposal title
observer	Dr. CXC Calibration	Principal investigator
object	A1795	Source name
dtcycle	0	
cycle	P	events from which exps? Prim/Second/Both
ra_targ	207.219583	Observer's specified target RA [deg]
dec_targ	26.590833	Observer's specified target Dec [deg]
ra_nom	207.20098156375	Nominal RA [deg]
dec_nom	26.607390059015	Nominal Dec [deg]
roll_nom	139.5634982182	Nominal Roll [deg]
revision	1	Processing version of data
ontime	14467.70011127	Sum of GTIs [s]
livetime	14278.66895835	Livetime [s]
ontime0	14467.70011127	Sum of GTIs [s]
ontime1	14464.559100866	Sum of GTIs [s]
ontime2	14464.559120893	Sum of GTIs [s]
ontime3	14467.70011127	Sum of GTIs [s]
ontime6	14467.70011127	Sum of GTIs [s]
l2events	155152	Number of level 2 events



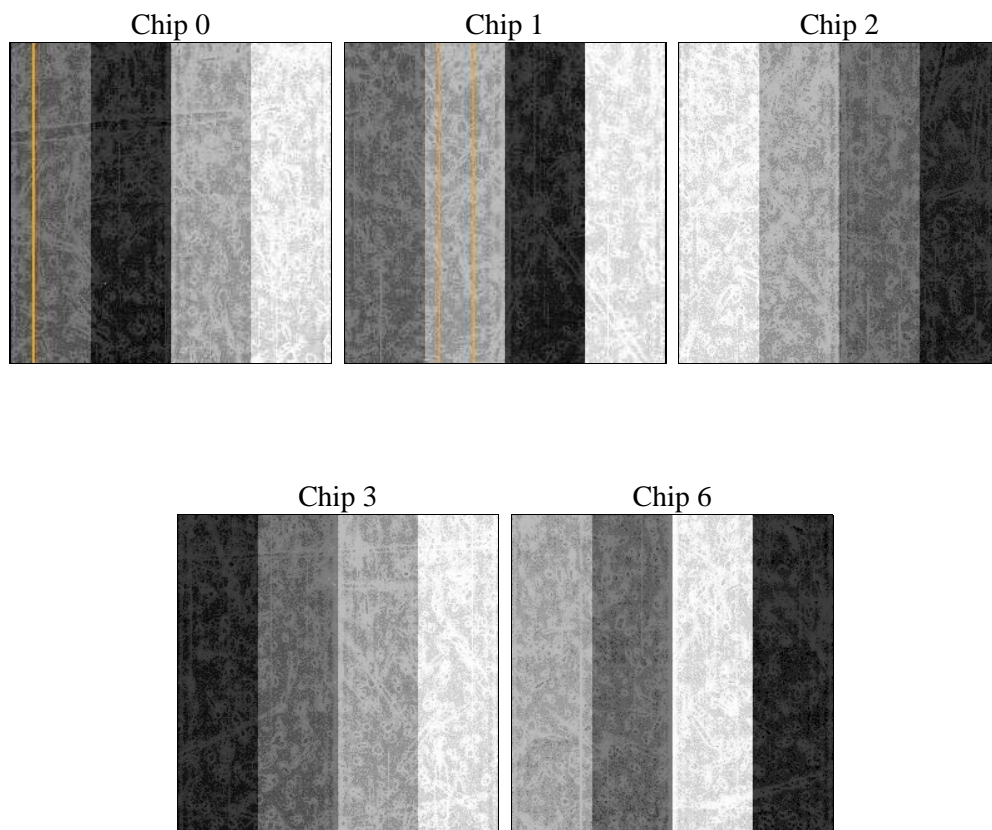
2 OBI

2.1 OBI

2.1.1 Images



2.1.2 Bias



2.1.3 Parameters

obi_num	1	Obi number	sched_exp_time	14388.000000	[s] Scheduled observation exposure time
ascdsver	8.4.3	Processing system revision	ontime	14467.70011127	Sum of GTIs [s]
caldsver	4.4.8	 	ontime0	14467.70011127	Sum of GTIs [s]
date	2012-03-26T13:08:46	Date and time of file creation	ontime1	14464.559100866	Sum of GTIs [s]
revision	1	Processing version of data	ontime2	14464.559120893	Sum of GTIs [s]
			ontime3	14467.70011127	Sum of GTIs [s]
			ontime6	14467.70011127	Sum of GTIs [s]
			l1events	529668	Number of level 1 events

2.1.4 Events

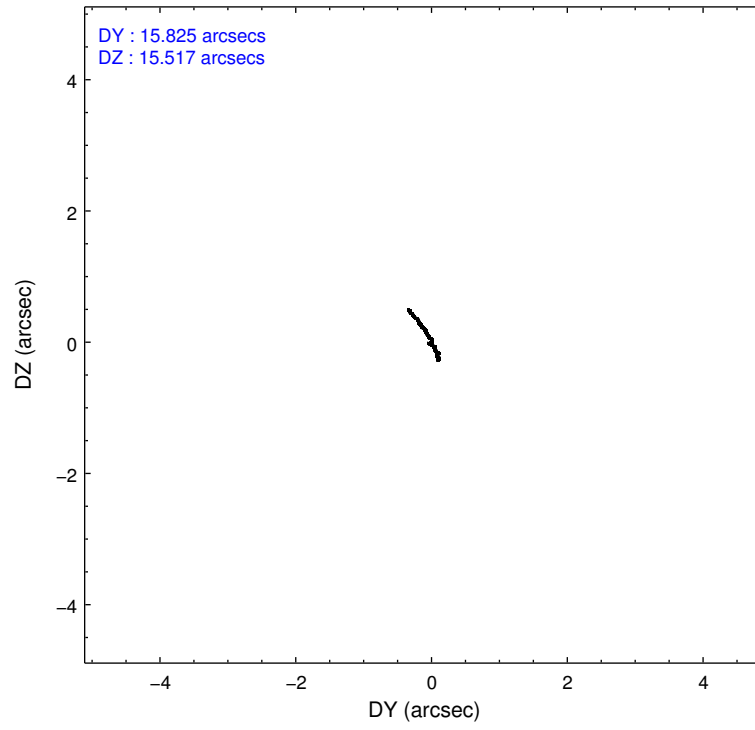
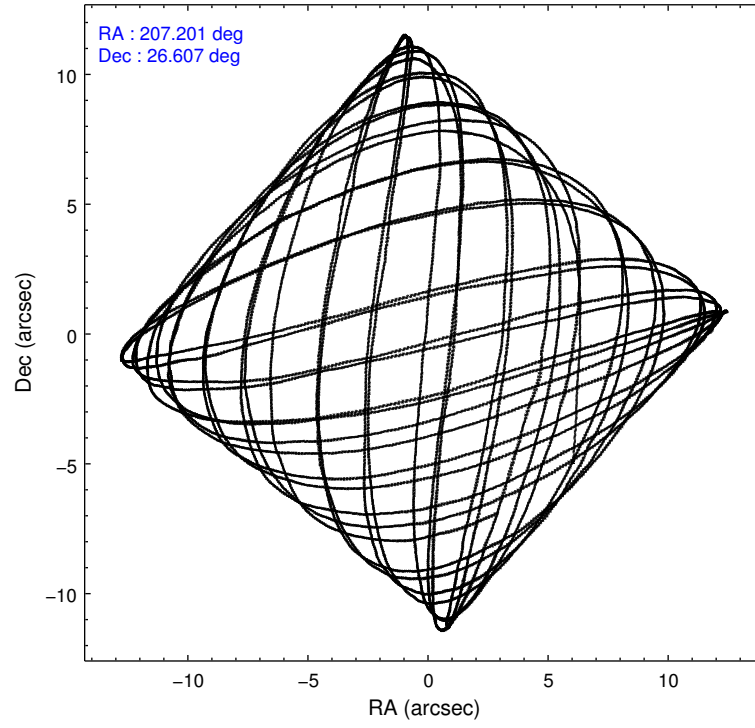
	ccd 0	ccd 1	ccd 2	ccd 3	ccd 6
level 1 events	84134	94973	99277	164419	86865
rejected events	66573	71762	75176	72589	72500
rejected %	79%	75%	75%	44%	83%

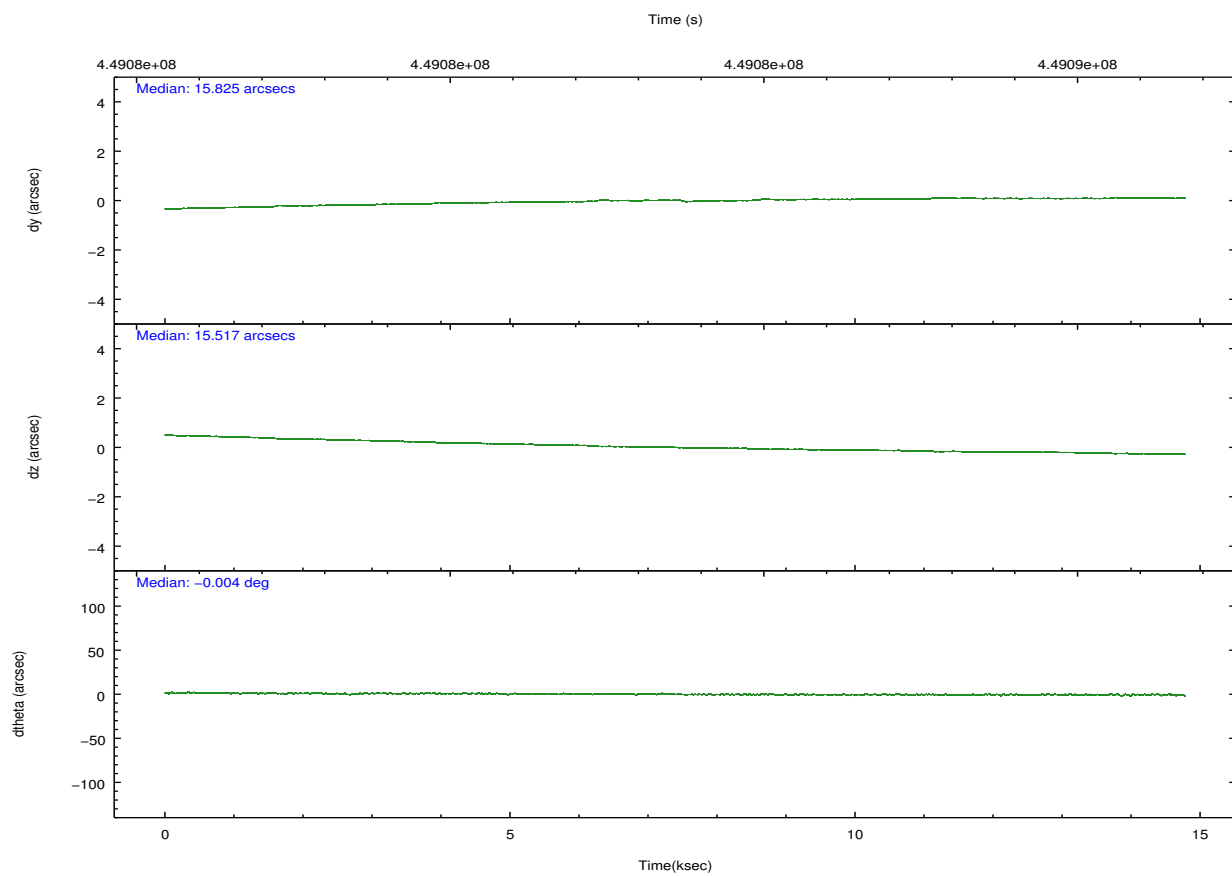
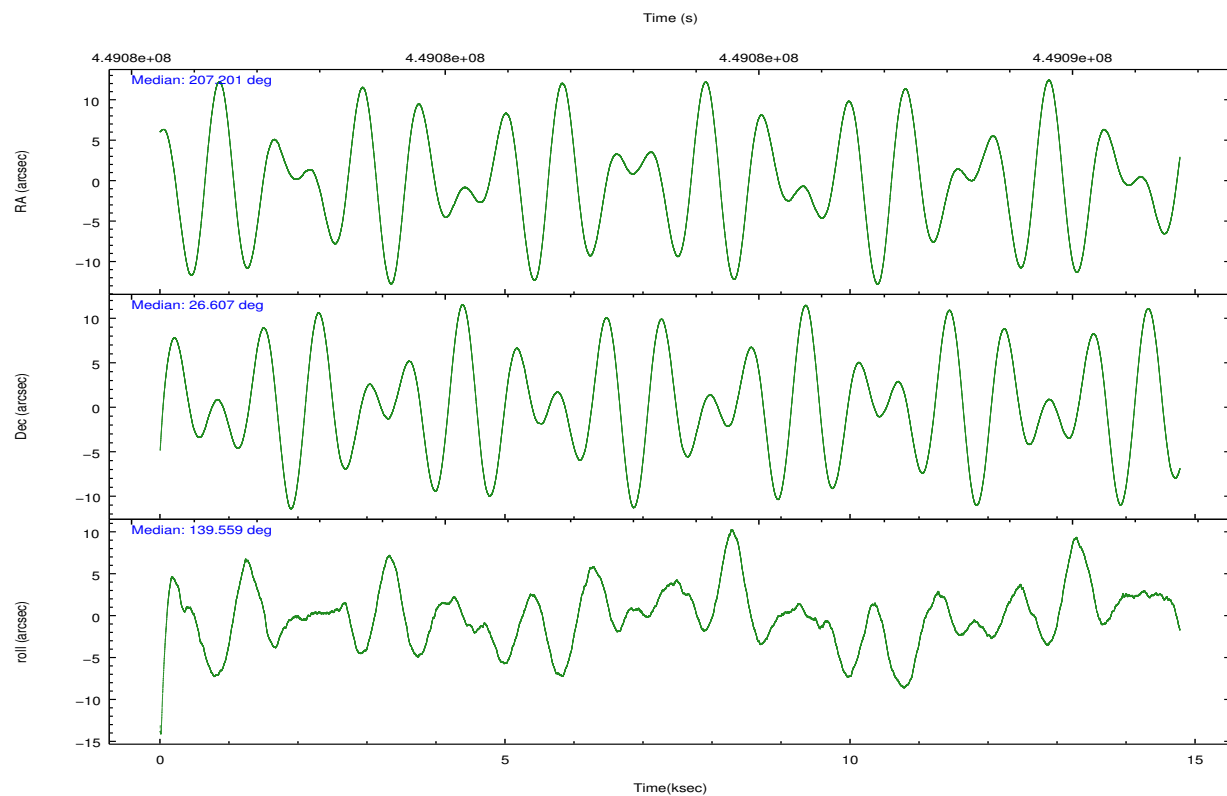
	ccd 0	ccd 1	ccd 2	ccd 3	ccd 6
grade 0 events	9578	13714	15455	71296	7826
	11%	14%	15%	43%	9%
grade 1 events	72	4559	89	378	71
	0%	4%	0%	0%	0%
grade 2 events	3244	3939	3692	10103	2261
	3%	4%	3%	6%	2%
grade 3 events	1314	1421	1346	3362	1017
	1%	1%	1%	2%	1%
grade 4 events	1211	1503	1413	3292	1007
	1%	1%	1%	2%	1%
grade 5 events	3760	4177	3516	4495	4077
	4%	4%	3%	2%	4%
grade 6 events	2219	2647	2211	3829	2261
	2%	2%	2%	2%	2%
grade 7 events	62736	63013	71555	67664	68345
	74%	66%	72%	41%	78%

2.2 Compared Parameters

Parameter	Planned	Actual	Parameter	Planned	Actual
Instrument	ACIS	ACIS	Obspar format version number	7	7
Detector	ACIS-01236	ACIS-01236	Obspar file type	PREDICTED	ACTUAL
Grating	NONE	NONE	Obspar update status	NONE	UPDATED
Data mode	VFAINT	VFAINT	Number of optional ACIS chips dropped	0	0
Observation mode	POINTING	POINTING	On-chip summing requested	N	N
[deg] Pointing RA	207.231284	207.2009815637466	Subarray requested	NONE	NONE
[deg] Pointing Dec	26.602495	26.60739005901454	Alternating exposures requested	N	N
[deg] Pointing Roll	139.341248	139.5634982182031	[s] Primary exposure time	0.000000	3.1
[mm] SIM focus pos	-0.782348	-0.7809083437167272			
[mm] SIM defocus	0	0.001439871863259334			
[mm] SIM translation stage pos	-230.252463	-230.2509380556586			
[mm] SIM translation stage offset	-3.34	-3.341514947271122			
[s] Observation start time (MET)	449076585.184000	449075541.97037			
Observation start date	2012-03-25T15:28:39	2012-03-25T15:12:21			
[s] Observation end time (MET)	449090973.184000	449091106.59619			
Observation end date	2012-03-25T19:28:27	2012-03-25T19:31:46			
Read mode	TIMED	TIMED			

2.3 Aspect



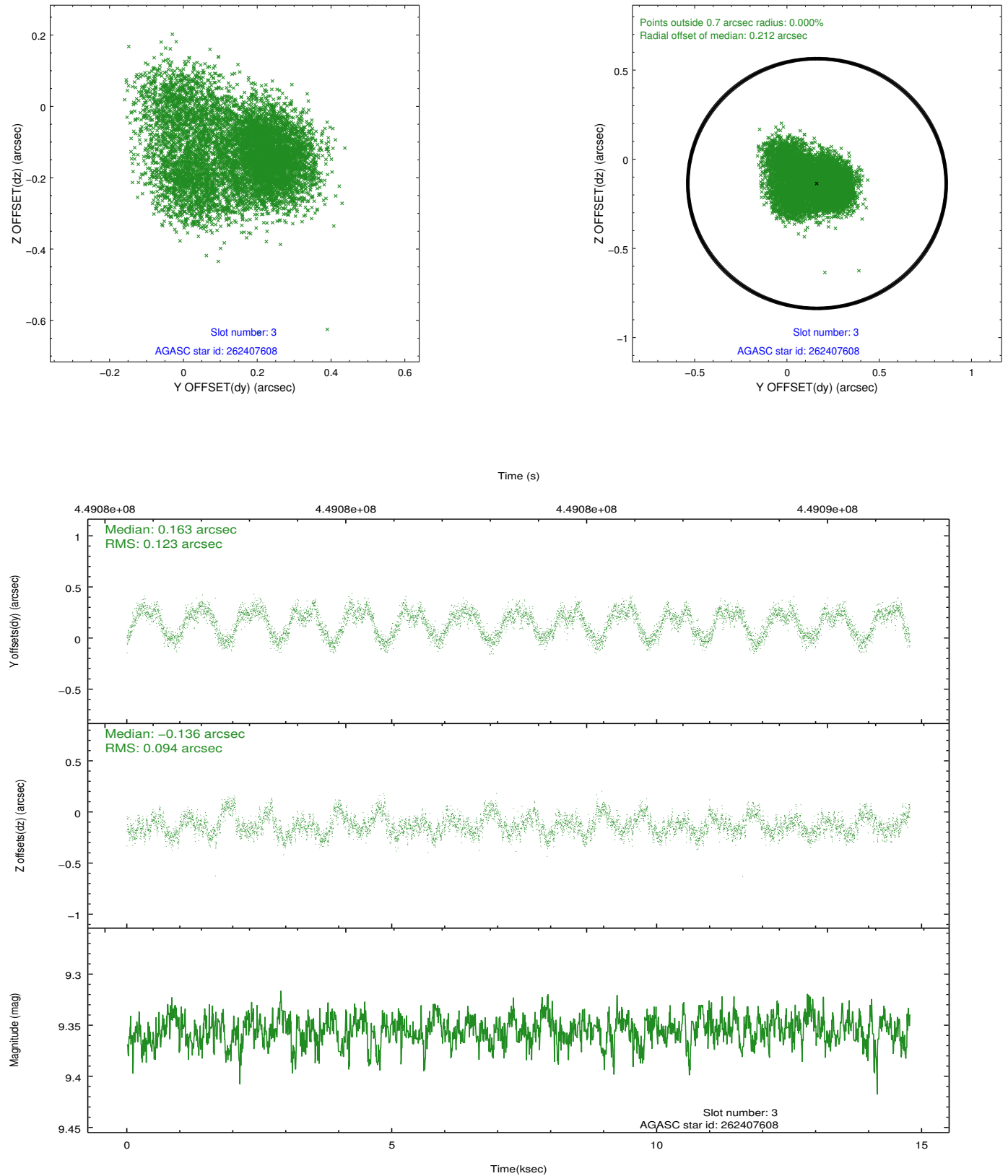


Slot Statistics

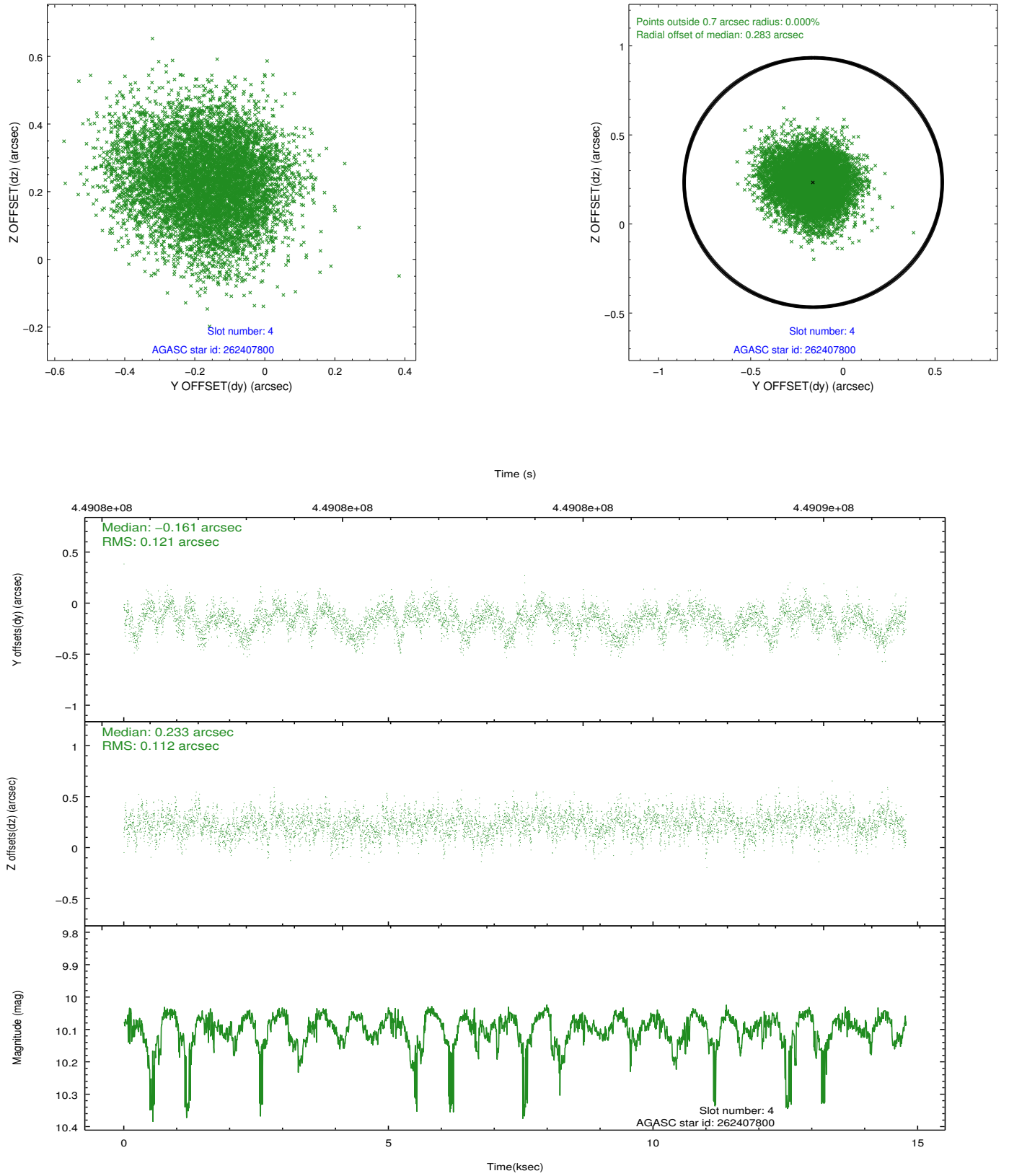
slot	status	id	mag	n_pts	med_dy	med_dz	dr1	dr2	ra	dec	mean_y	mean_z
0	FID	ACIS-I-1	7.06	3605	0.047	0.000	0.019	0.029	0.000000	0.000000	923.67	-907.68
1	FID	ACIS-I-5	7.04	3605	-0.225	0.051	0.011	0.017	0.000000	0.000000	-1824.60	989.60
2	FID	ACIS-I-6	7.05	3605	0.087	0.021	0.014	0.021	0.000000	0.000000	388.83	1634.49
3	GUIDE	262407608	9.36	7203	0.163	-0.136	0.166	0.266	207.378401	26.435507	-751.10	146.79
4	GUIDE	262407800	10.10	7175	-0.161	0.233	0.177	0.279	207.321181	27.251762	1306.33	-1958.34
5	GUIDE	262408096	9.34	7189	-0.151	-0.131	0.129	0.199	207.011678	26.515421	333.42	698.23
6	GUIDE	262408936	9.71	7156	0.009	0.108	0.150	0.237	207.154731	26.726554	477.80	-178.07
7	GUIDE	262411960	9.68	7195	0.177	-0.072	0.159	0.245	207.327895	25.881727	-1927.67	1764.42

2.4 Star Slots

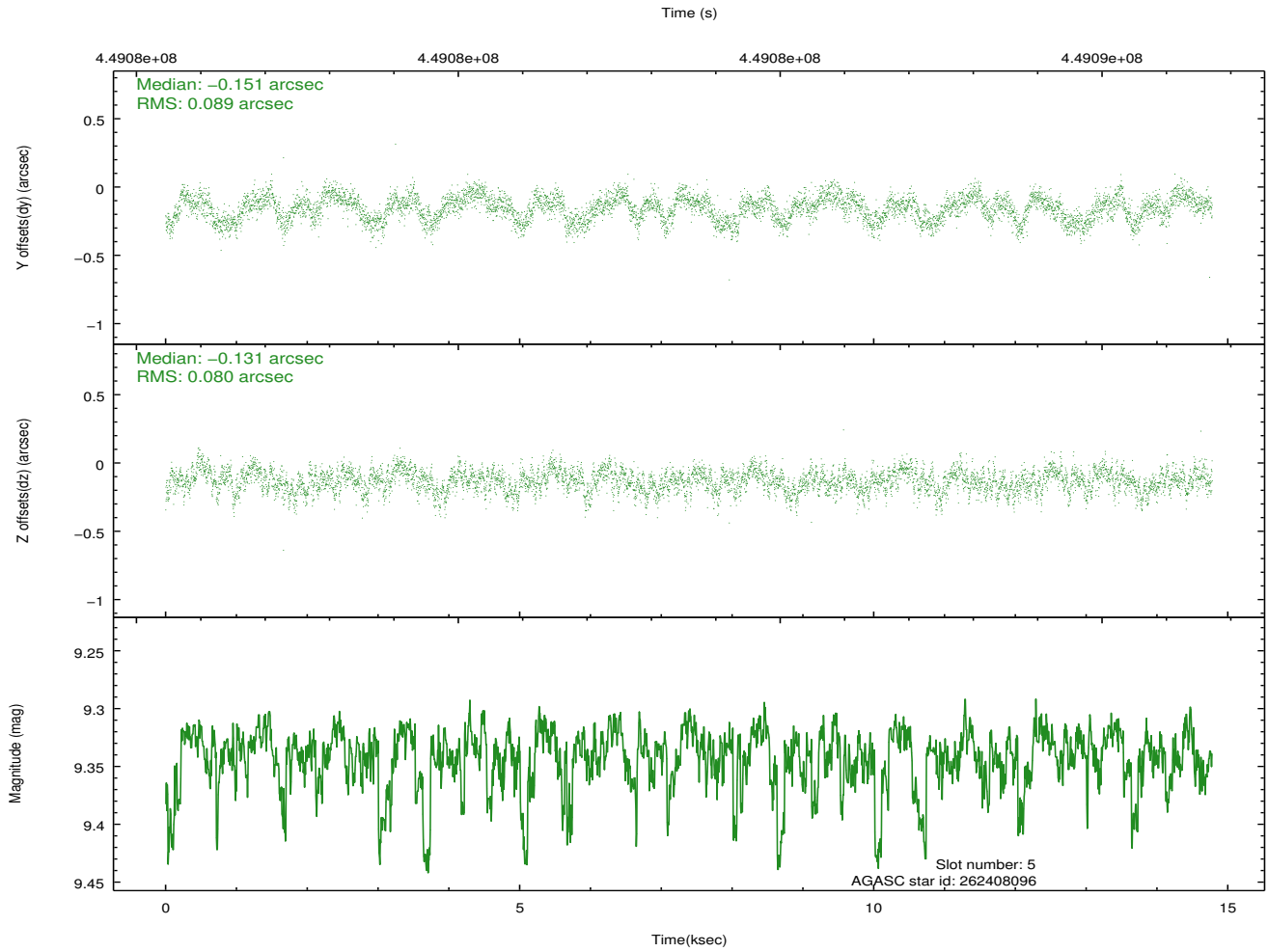
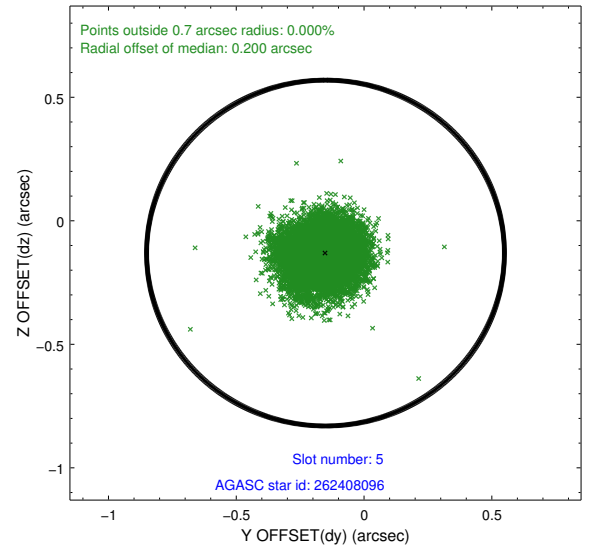
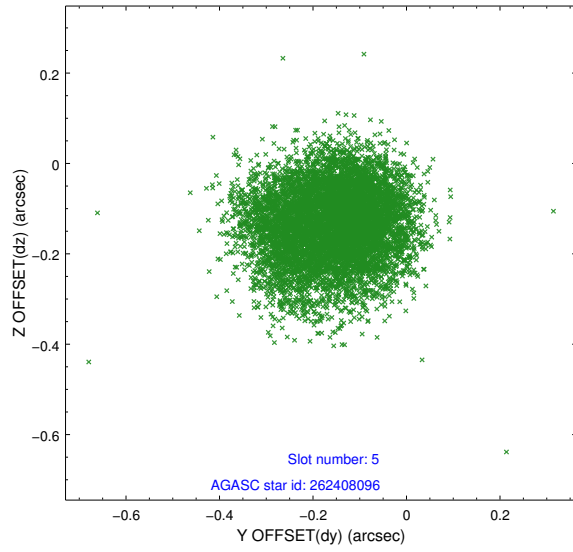
2.4.1 Slot 3



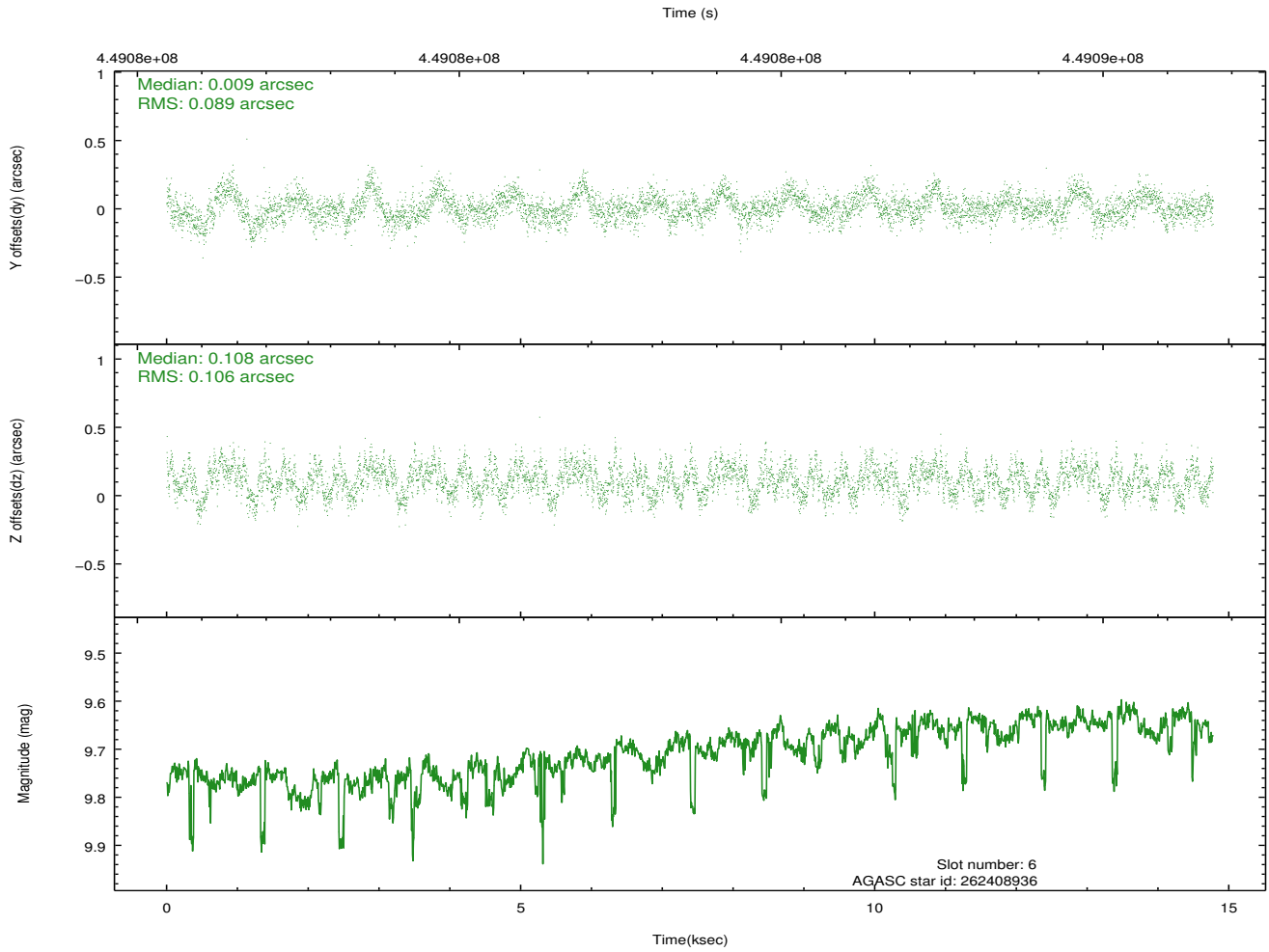
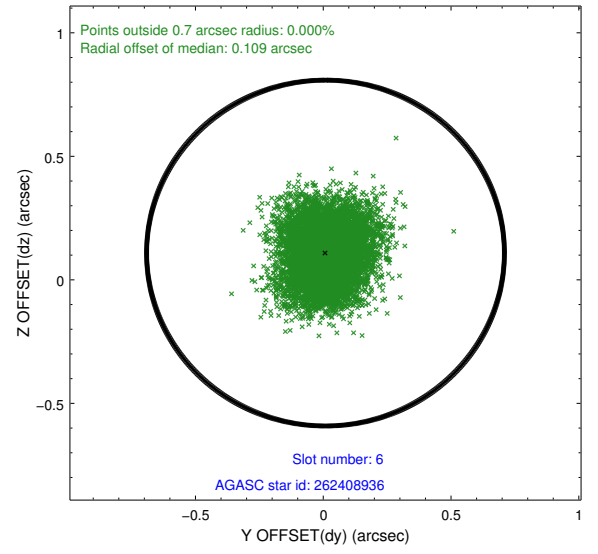
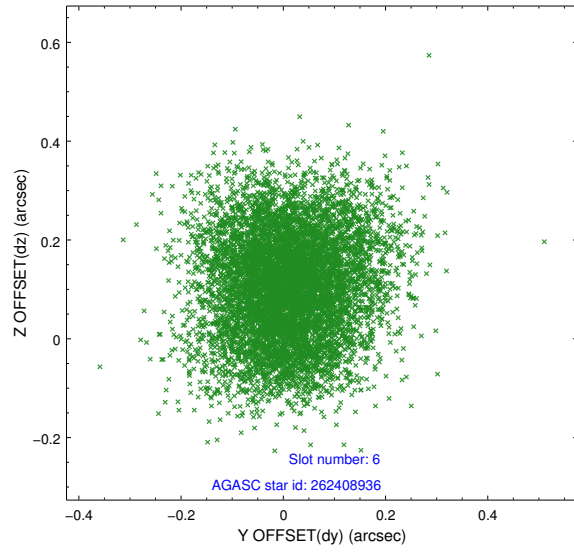
2.4.2 Slot 4



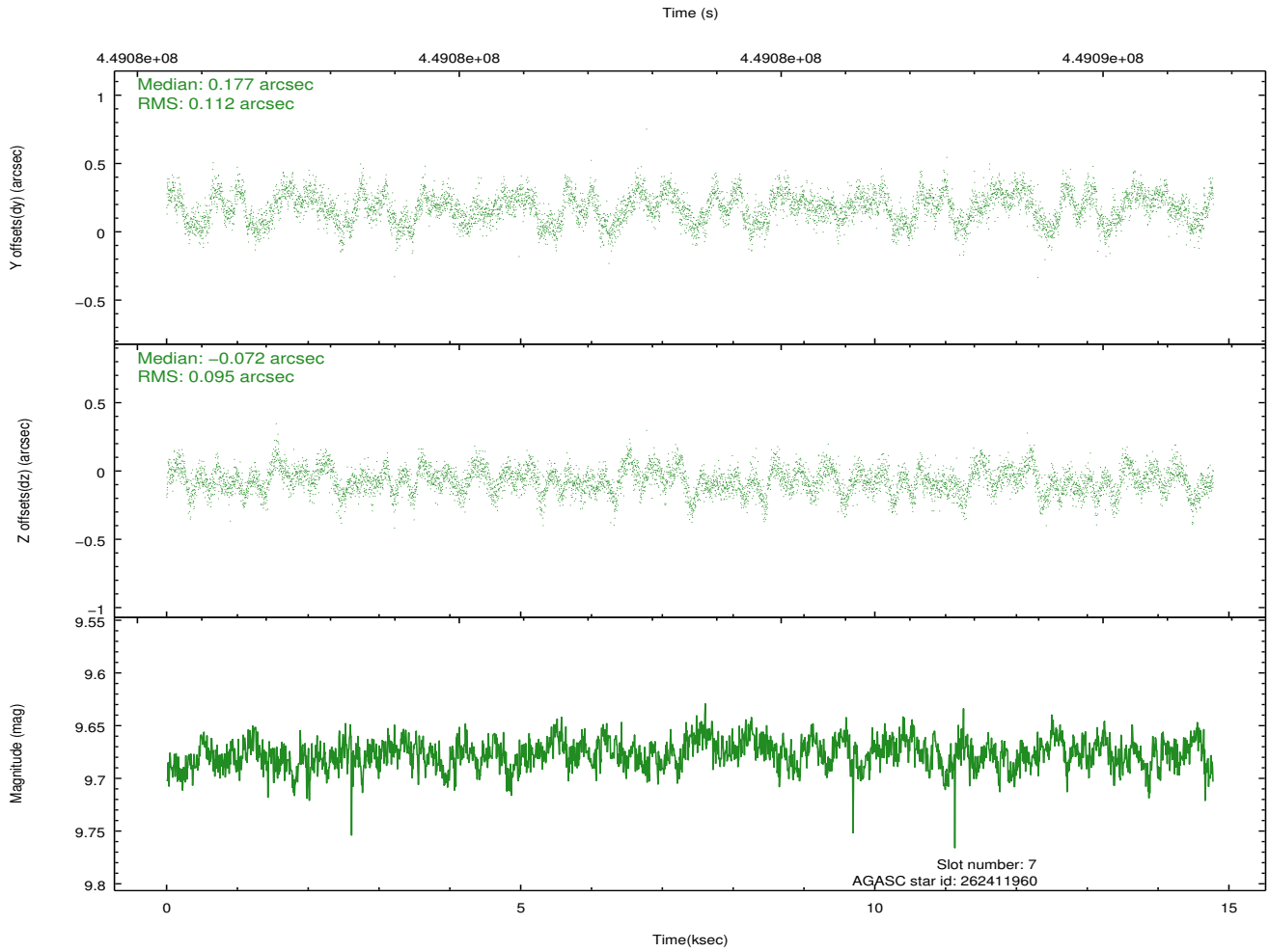
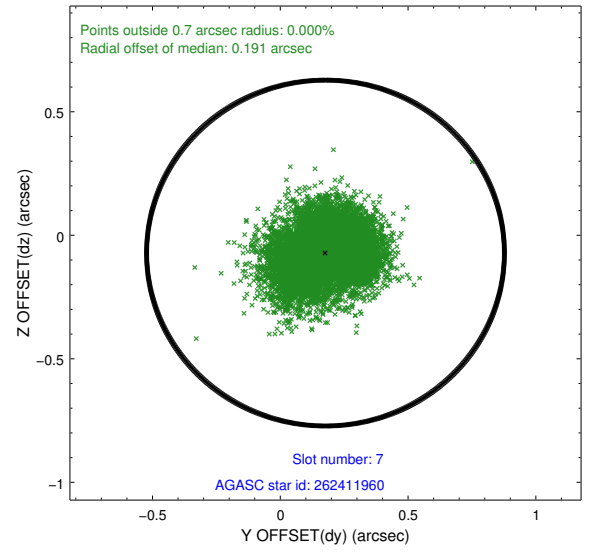
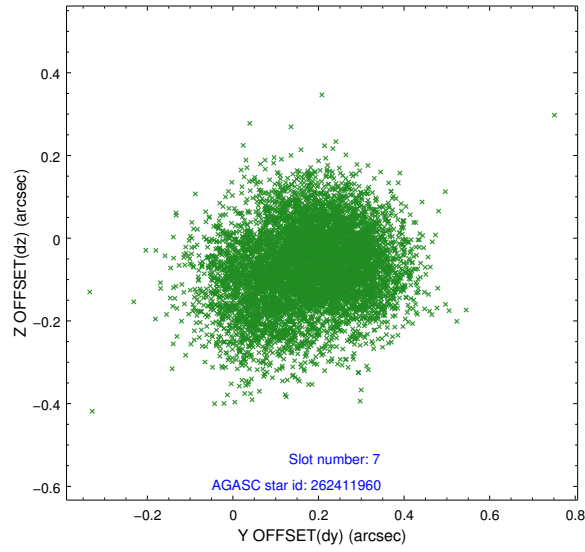
2.4.3 Slot 5



2.4.4 Slot 6

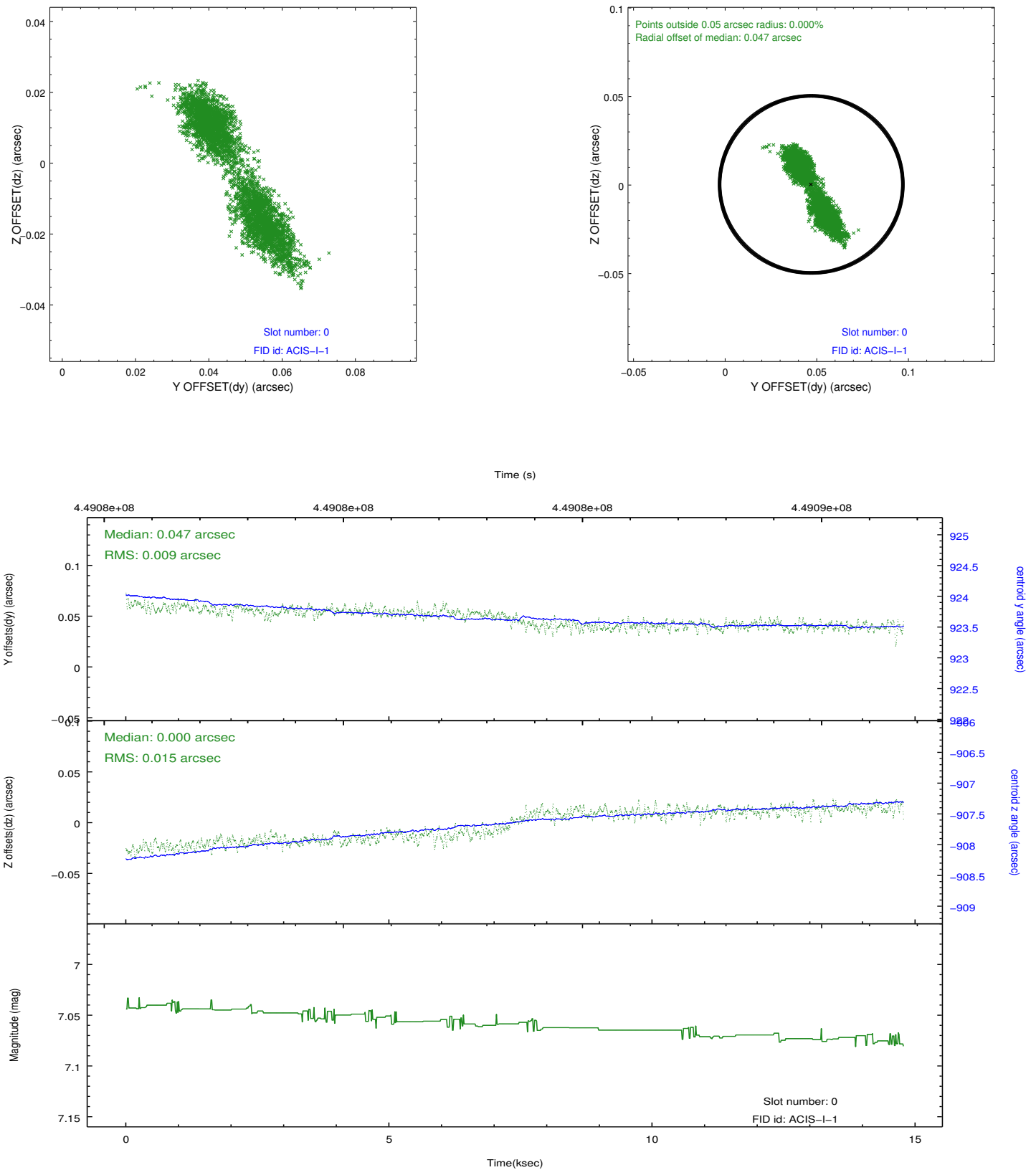


2.4.5 Slot 7

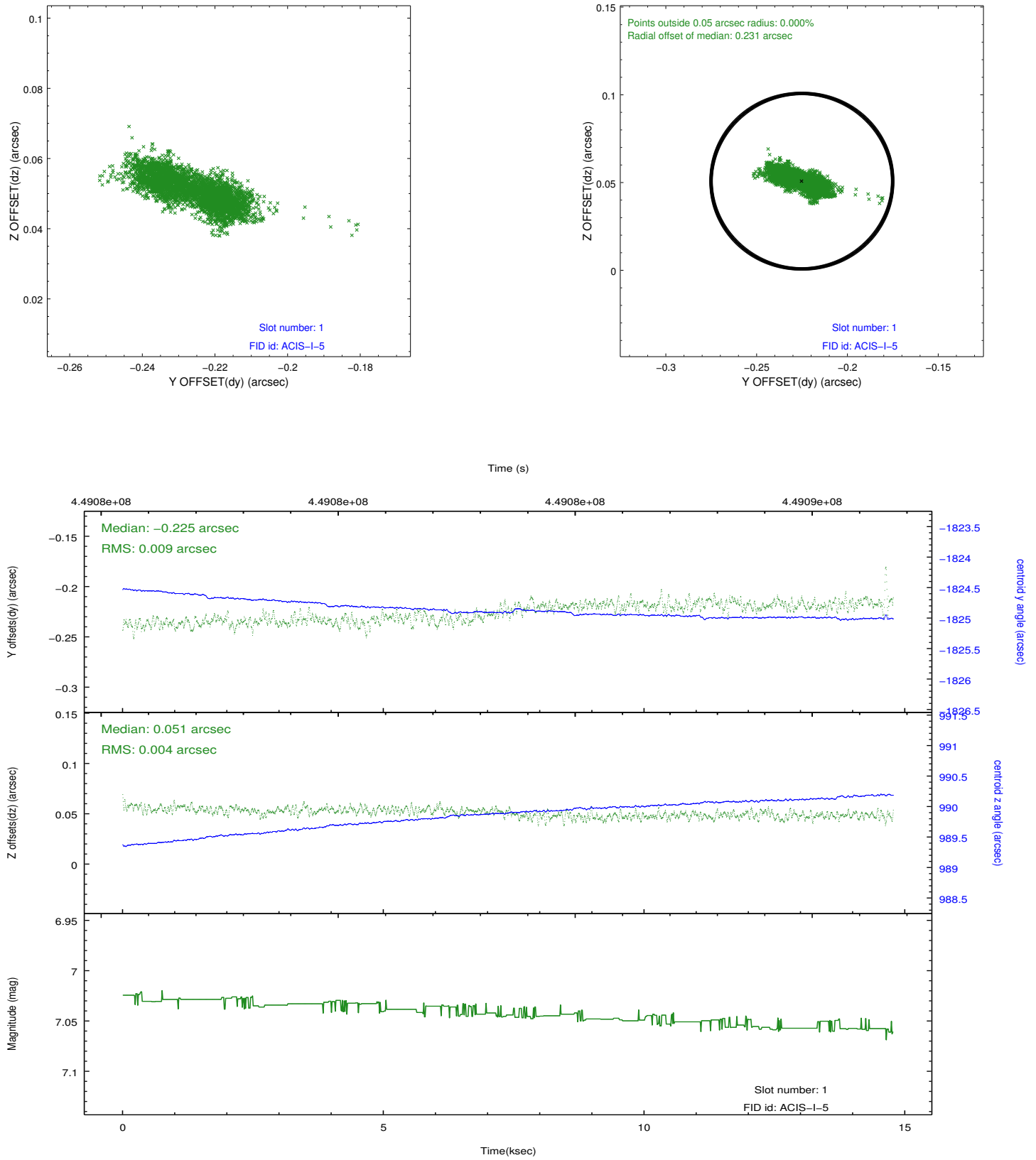


2.5 FID Slots

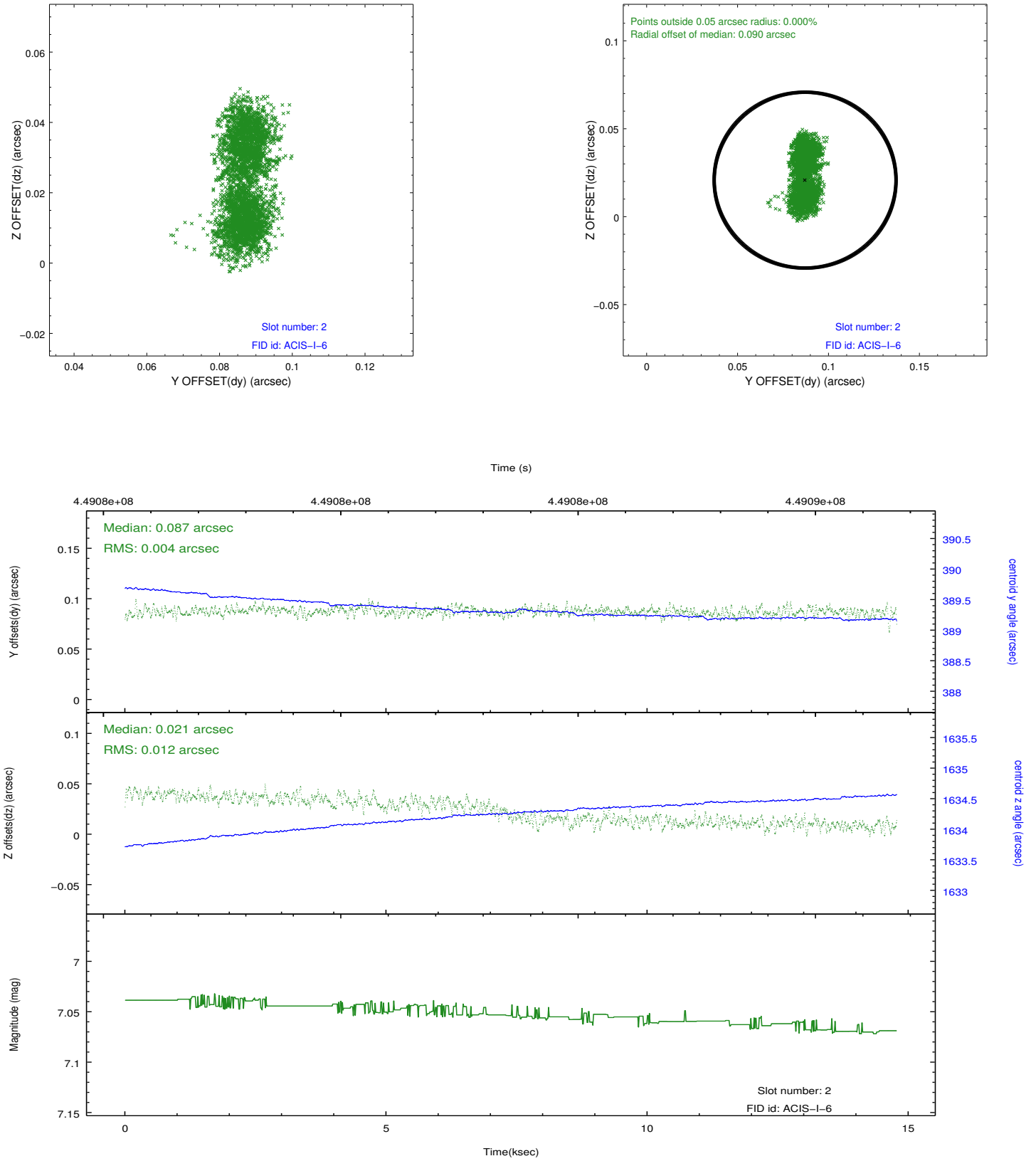
2.5.1 Slot 0



2.5.2 Slot 1



2.5.3 Slot 2



A Summary

A.1 Status

V&V Scientist	Jen Lauer
V&V Date (YYYY-MM-DD)	2012.03.26
V&V Edition	1
V&V Disposition and Status	OK
V&V Charge Time	14.46770011127

A.2 Comments