

# V&V Reference Report

## L2 ASCDS Version : 8.4.3

Observation 12910 - L2 Version 2  
Chandra X-Ray Center

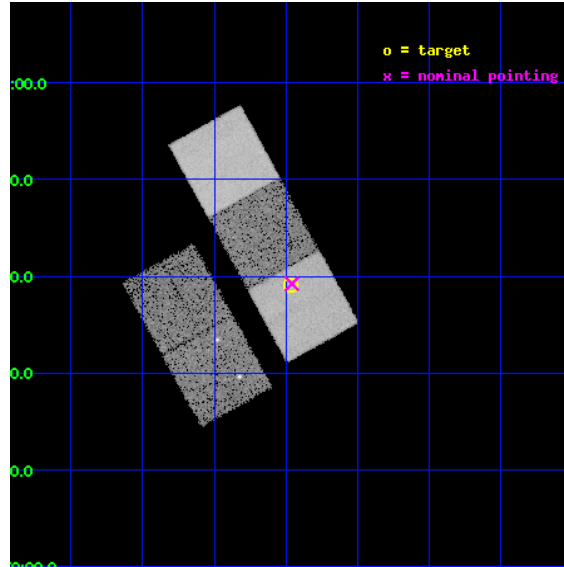
L2 Processing Date : Feb 28 2012

## Contents

<b>1</b>	<b>Front</b>	<b>2</b>
<b>2</b>	<b>OBI</b>	<b>3</b>
2.1	OBI . . . . .	3
2.1.1	Images . . . . .	3
2.1.2	Bias . . . . .	3
2.1.3	Parameters . . . . .	4
2.1.4	Events . . . . .	4
2.2	Compared Parameters . . . . .	5
2.3	Aspect . . . . .	6
2.4	Star Slots . . . . .	9
2.4.1	Slot 3 . . . . .	9
2.4.2	Slot 4 . . . . .	10
2.4.3	Slot 5 . . . . .	11
2.4.4	Slot 6 . . . . .	12
2.4.5	Slot 7 . . . . .	13
2.5	FID Slots . . . . .	14
2.5.1	Slot 0 . . . . .	14
2.5.2	Slot 1 . . . . .	15
2.5.3	Slot 2 . . . . .	16
<b>A</b>	<b>Summary</b>	<b>17</b>
A.1	Status . . . . .	17
A.2	Comments . . . . .	17

# 1 Front

seq_num	801047	Sequence number
obs_id	12910	Observation id
title	Abell 1882: A Proto-cluster at Low Redshift	Proposal title
observer	Professor Christopher Miller	Principal investigator
object	A1882c	Source name
dtcycle	0	&#160
cycle	P	events from which exps? Prim/Second/Both
ra_targ	213.74125	Observer's specified target RA [deg]
dec_targ	-0.348806	Observer's specified target Dec [deg]
ra_nom	213.73981278623	Nominal RA [deg]
dec_nom	-0.3461568222612	Nominal Dec [deg]
roll_nom	61.113007723082	Nominal Roll [deg]
revision	2	Processing version of data
ontime	16712.100128531	Sum of GTIs [s]
livetime	16493.744237083	Livetime [s]
ontime2	16708.959158182	Sum of GTIs [s]
ontime3	16712.100128531	Sum of GTIs [s]
ontime5	16712.100128531	Sum of GTIs [s]
ontime6	16712.100128531	Sum of GTIs [s]
ontime7	16712.100128531	Sum of GTIs [s]
l2events	175056	Number of level 2 events

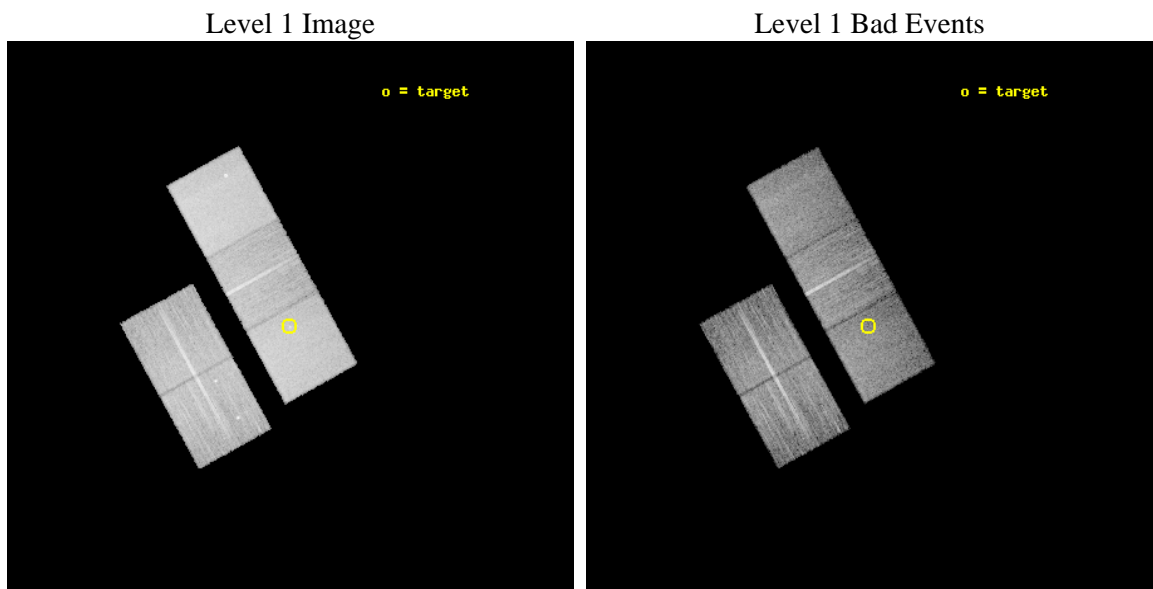




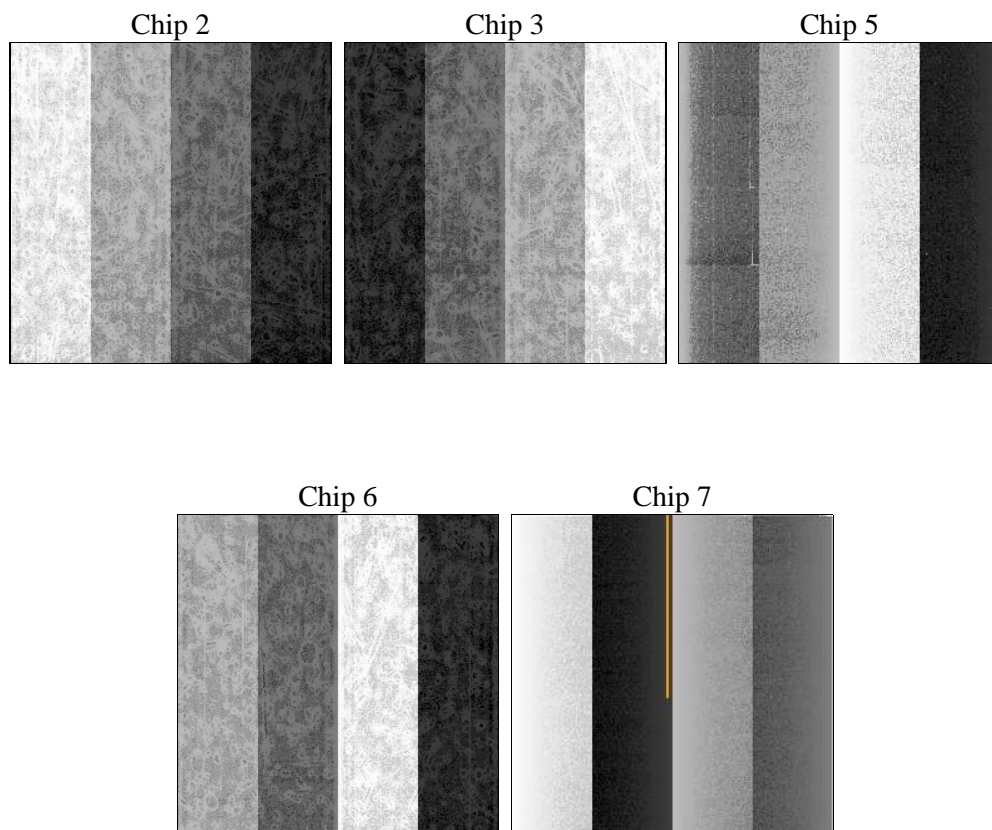
## 2 OBI

### 2.1 OBI

#### 2.1.1 Images



#### 2.1.2 Bias



### 2.1.3 Parameters

obi_num	0	Obi number	sched_exp_time	16667.208000	[s] Scheduled observation exposure time
ascdsver	8.4.3	Processing system revision	ontime	16712.100128531	Sum of GTIs [s]
caldsver	4.4.8	&#160	ontime2	16708.959158182	Sum of GTIs [s]
date	2012-02-28T17:18:10	Date and time of file creation	ontime3	16712.100128531	Sum of GTIs [s]
revision	2	Processing version of data	ontime5	16712.100128531	Sum of GTIs [s]
			ontime6	16712.100128531	Sum of GTIs [s]
			ontime7	16712.100128531	Sum of GTIs [s]
			l1events	638920	Number of level 1 events

### 2.1.4 Events

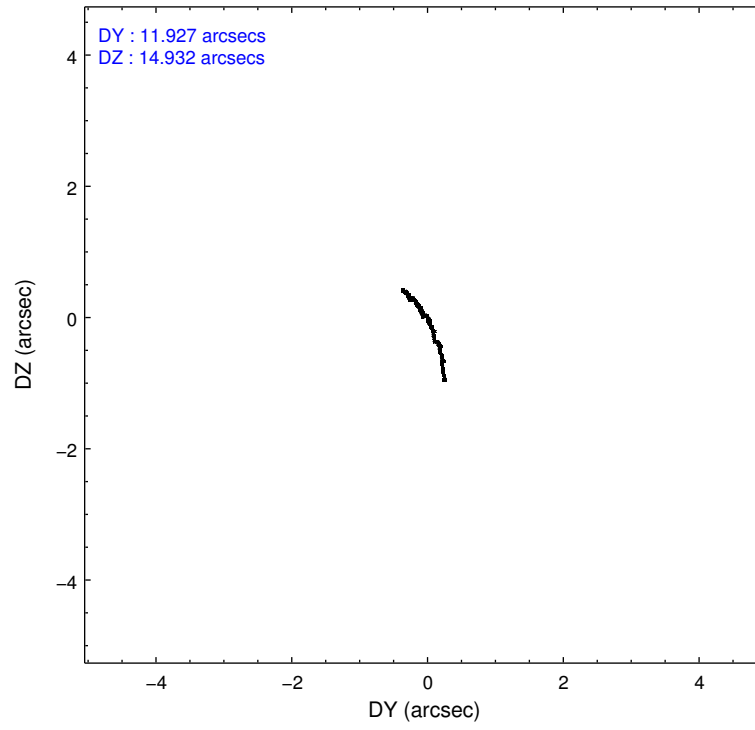
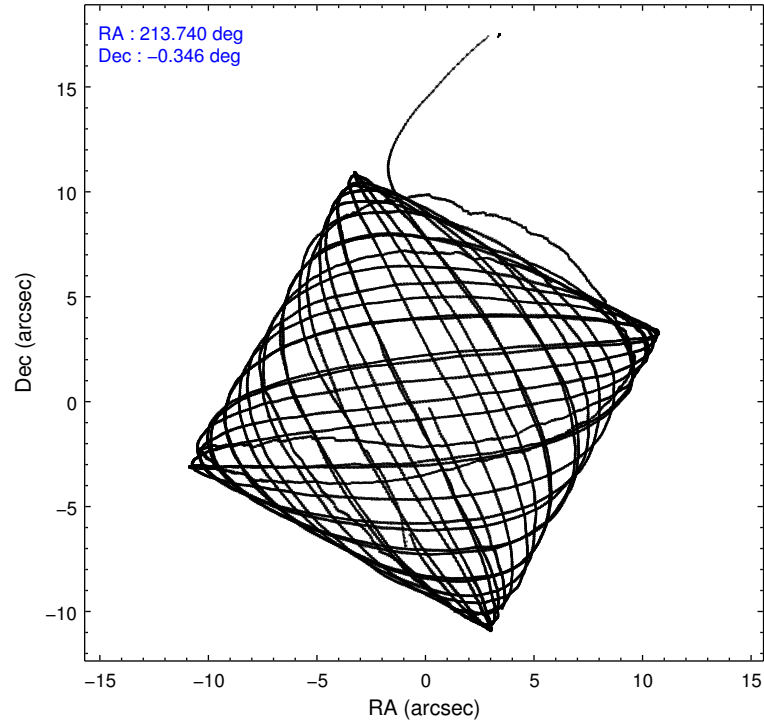
	ccd 2	ccd 3	ccd 5	ccd 6	ccd 7
level 1 events	105012	109086	170257	111351	143214
rejected events	92970	95778	88062	98785	79385
rejected %	88%	87%	51%	88%	55%

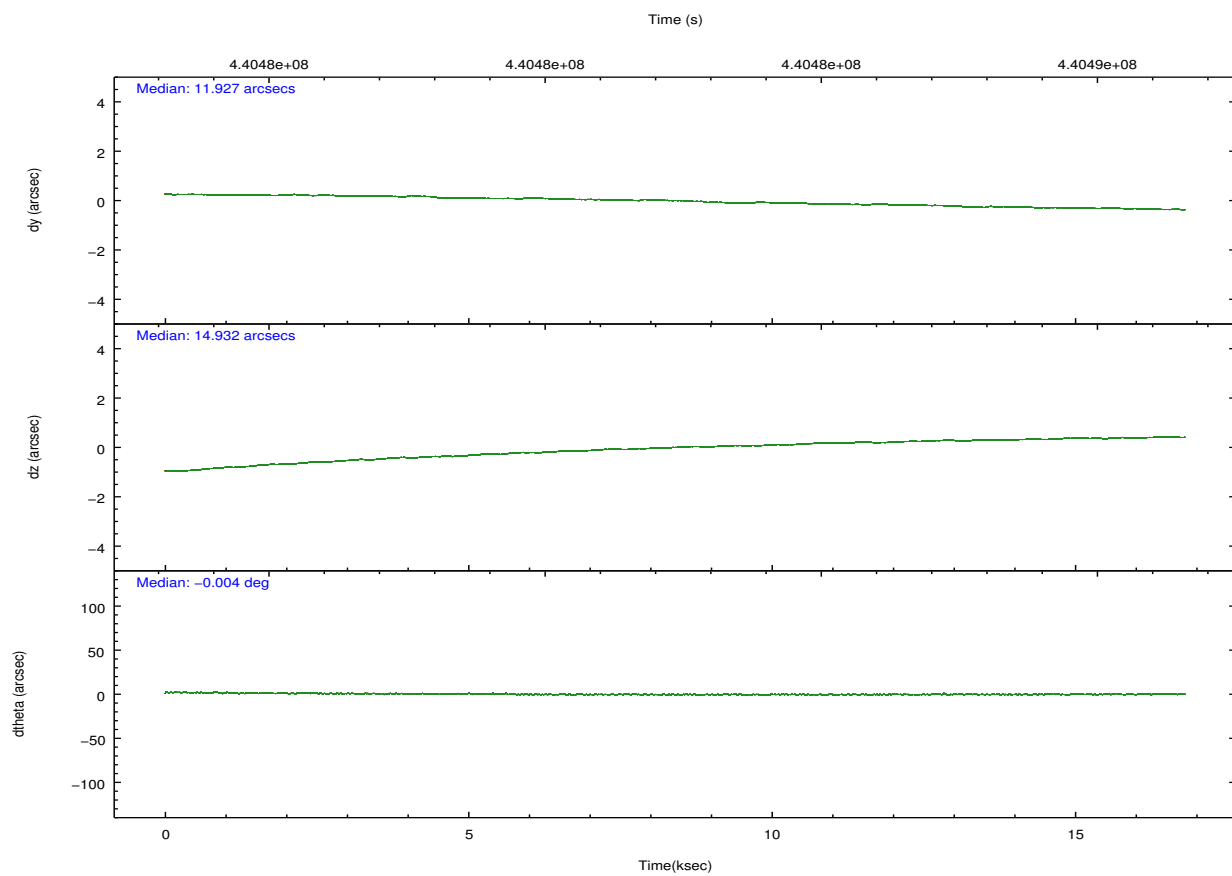
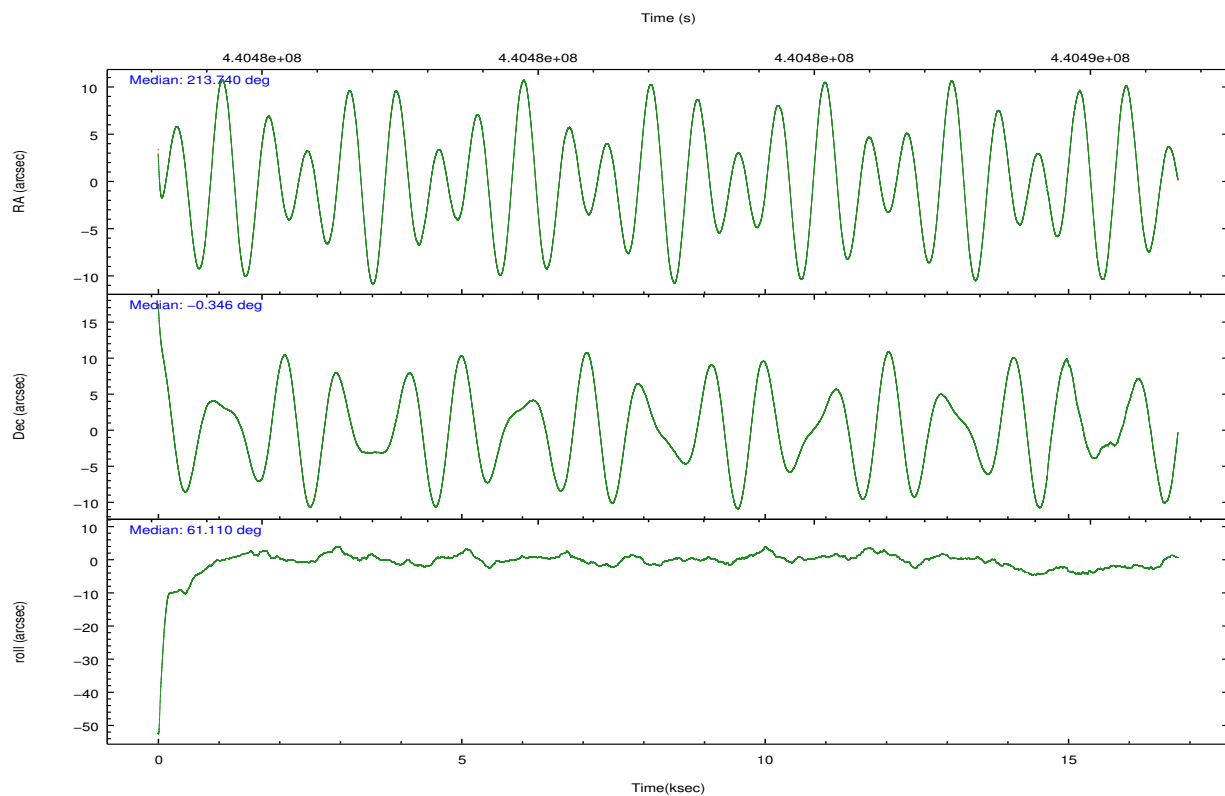
	ccd 2	ccd 3	ccd 5	ccd 6	ccd 7
grade 0 events	4288	5477	5533	4295	6066
	4%	5%	3%	3%	4%
grade 1 events	63	65	326	53	173
	0%	0%	0%	0%	0%
grade 2 events	2910	2725	25196	2769	13137
	2%	2%	14%	2%	9%
grade 3 events	1263	1333	3171	1330	5547
	1%	1%	1%	1%	3%
grade 4 events	1249	1301	3075	1309	5465
	1%	1%	1%	1%	3%
grade 5 events	4276	5092	13101	5203	14765
	4%	4%	7%	4%	10%
grade 6 events	2335	2473	45235	2867	33622
	2%	2%	26%	2%	23%
grade 7 events	88628	90620	74620	93525	64439
	84%	83%	43%	83%	44%

## 2.2 Compared Parameters

Parameter	Planned	Actual	Parameter	Planned	Actual
Instrument	ACIS	ACIS	Obspar format version number	7	7
Detector	ACIS-23567	ACIS-23567	Obspar file type	PREDICTED	ACTUAL
Grating	NONE	NONE	Obspar update status	NONE	UPDATED
Data mode	VFAINT	VFAINT	CCD I0 on	N	N
Observation mode	POINTING	POINTING	CCD I1 on	N	N
[deg] Pointing RA	213.740707	213.7398127862337	CCD I2 on	O1	Y
[deg] Pointing Dec	-0.373475	-0.3461568222611983	CCD I3 on	Y	Y
[deg] Pointing Roll	60.956426	61.11300772308211	CCD S0 on	N	N
[mm] SIM focus pos	-0.684267	-0.6828225247311905	CCD S1 on	Y	Y
[mm] SIM defocus	0	0.001444936568705701	CCD S2 on	Y	Y
[mm] SIM translation stage pos	-190.132523	-190.1425803651734	CCD S3 on	Y	Y
[mm] SIM translation stage offset	0	0.01005778216563158	CCD S4 on	N	N
[s] Observation start time (MET)	440474086.184000	440472749.31516	CCD S5 on	N	N
Observation start date	2011-12-17T01:53:40	2011-12-17T01:32:29	Number of optional ACIS chips dropped	0	0
[s] Observation end time (MET)	440490753.184000	440490982.01612	On-chip summing requested	N	N
Observation end date	2011-12-17T06:31:27	2011-12-17T06:36:22	Subarray requested	NONE	NONE
Read mode	TIMED	TIMED	Alternating exposures requested	N	N
			[s] Primary exposure time	0.000000	3.1

## 2.3 Aspect



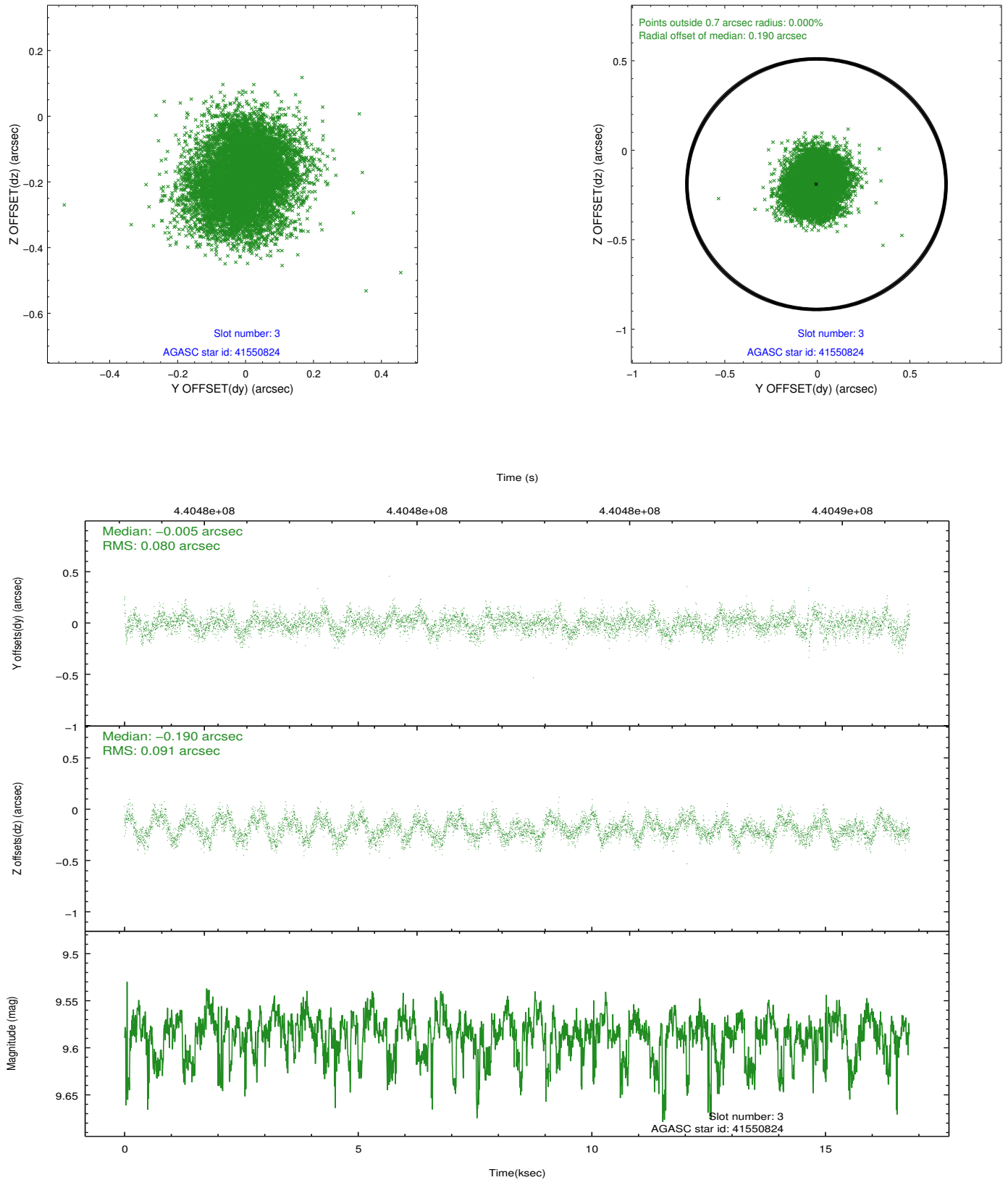


### Slot Statistics

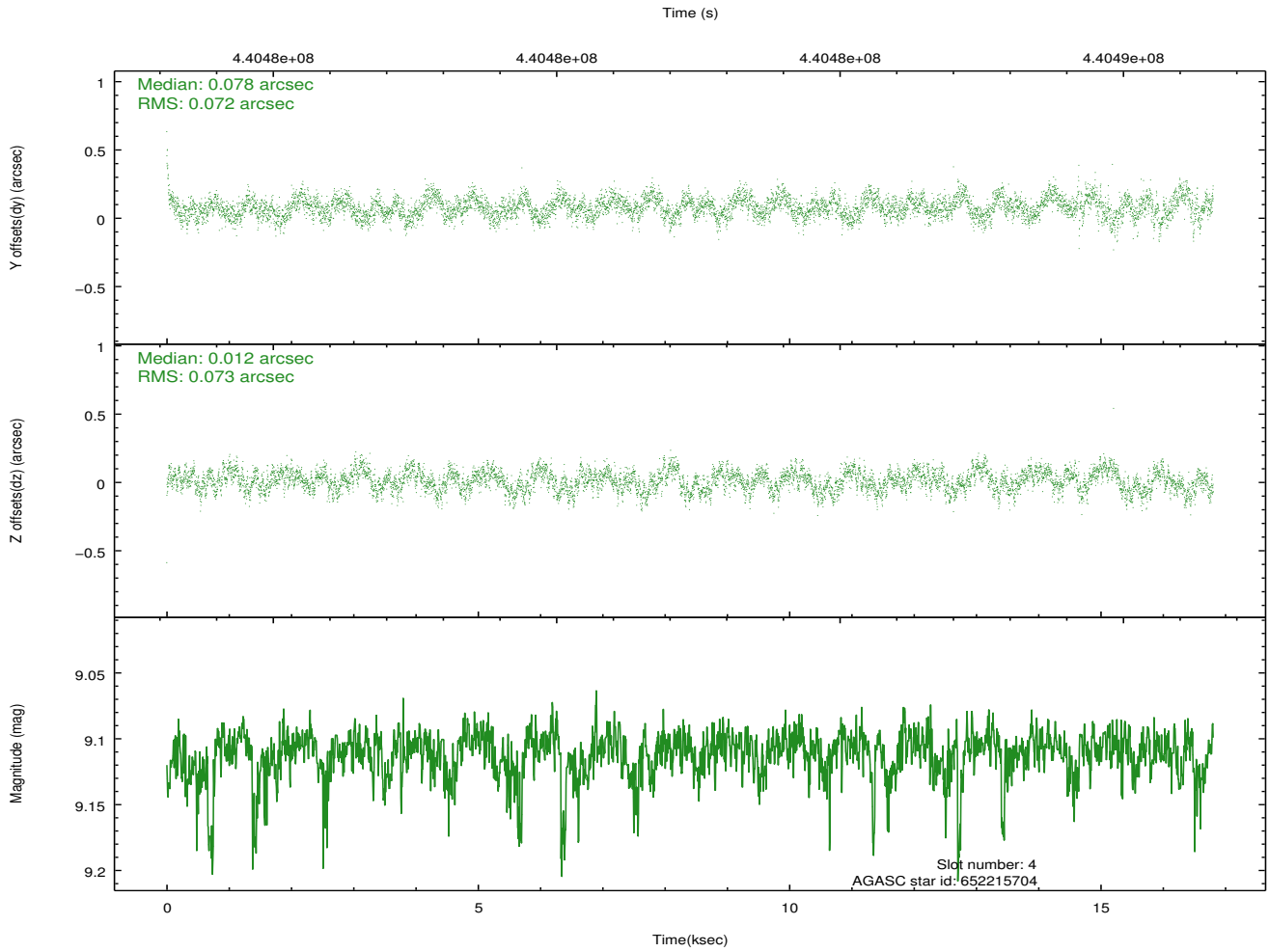
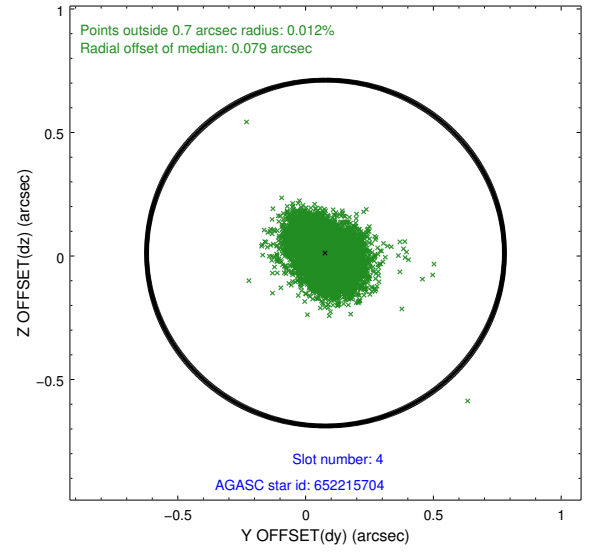
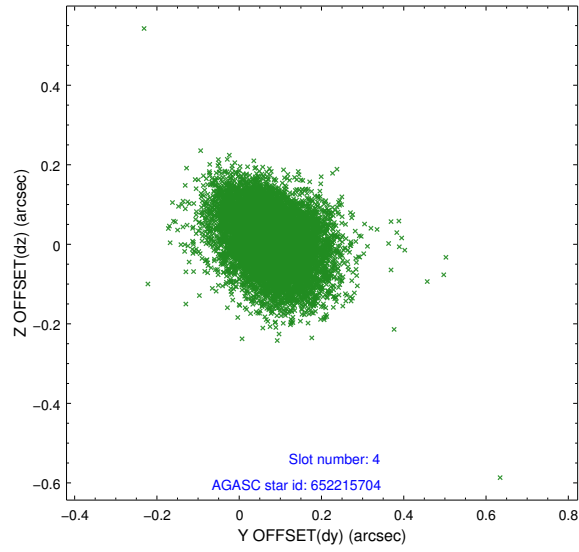
slot	status	id	mag	n_pts	med_dy	med_dz	dr1	dr2	ra	dec	mean_y	mean_z
0	FID	ACIS-S-2	6.99	4100	-0.061	-0.027	0.016	0.028	0.000000	0.000000	-764.83	-1736.19
1	FID	ACIS-S-4	7.08	4100	0.190	0.037	0.006	0.010	0.000000	0.000000	2148.57	172.11
2	FID	ACIS-S-5	7.12	4099	-0.161	-0.001	0.016	0.028	0.000000	0.000000	-1817.46	166.01
3	GUIDE	41550824	9.59	8137	-0.005	-0.190	0.132	0.202	213.709216	0.254022	1919.77	1196.30
4	GUIDE	652215704	9.11	8193	0.078	0.012	0.109	0.174	213.594661	-0.601169	-971.16	62.06
5	GUIDE	652223856	9.11	8173	-0.157	0.193	0.124	0.209	214.256332	-0.079315	1825.96	-1109.72
6	GUIDE	652224488	6.07	8199	0.079	-0.055	0.088	0.151	213.419957	-0.845464	-2045.64	181.35
7	GUIDE	652223976	10.34	8133	-0.012	0.063	0.236	0.366	214.287184	-0.125851	1734.23	-1287.00

## 2.4 Star Slots

### 2.4.1 Slot 3

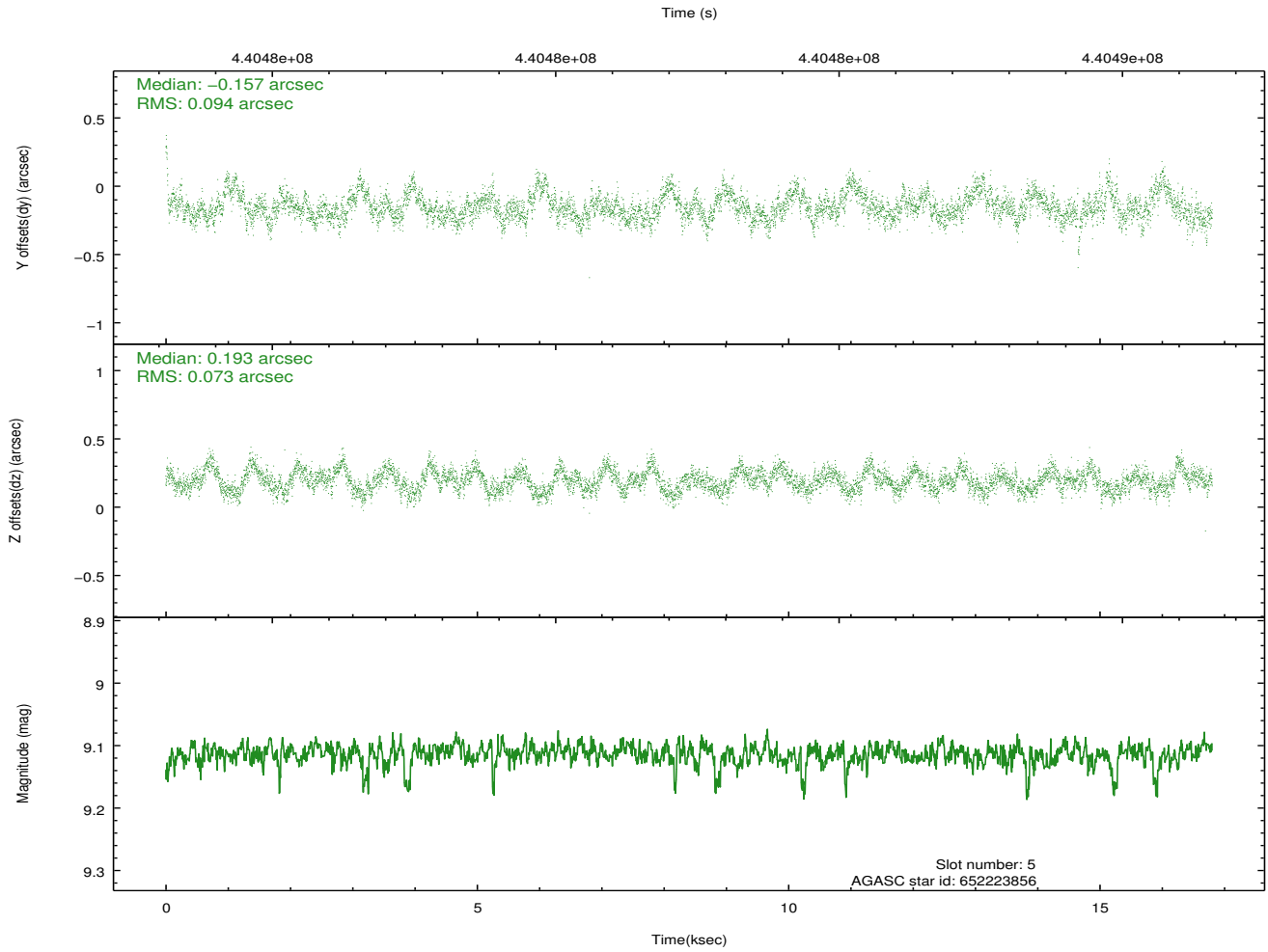
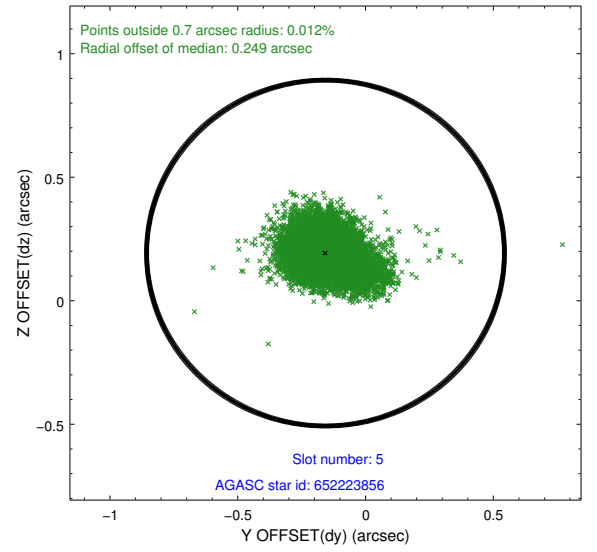
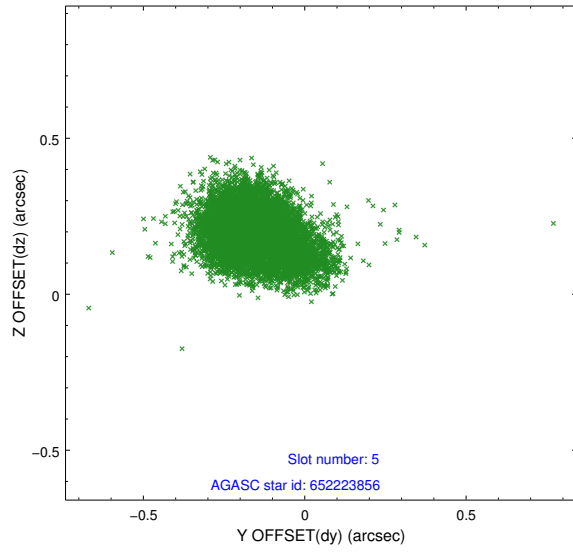


## 2.4.2 Slot 4

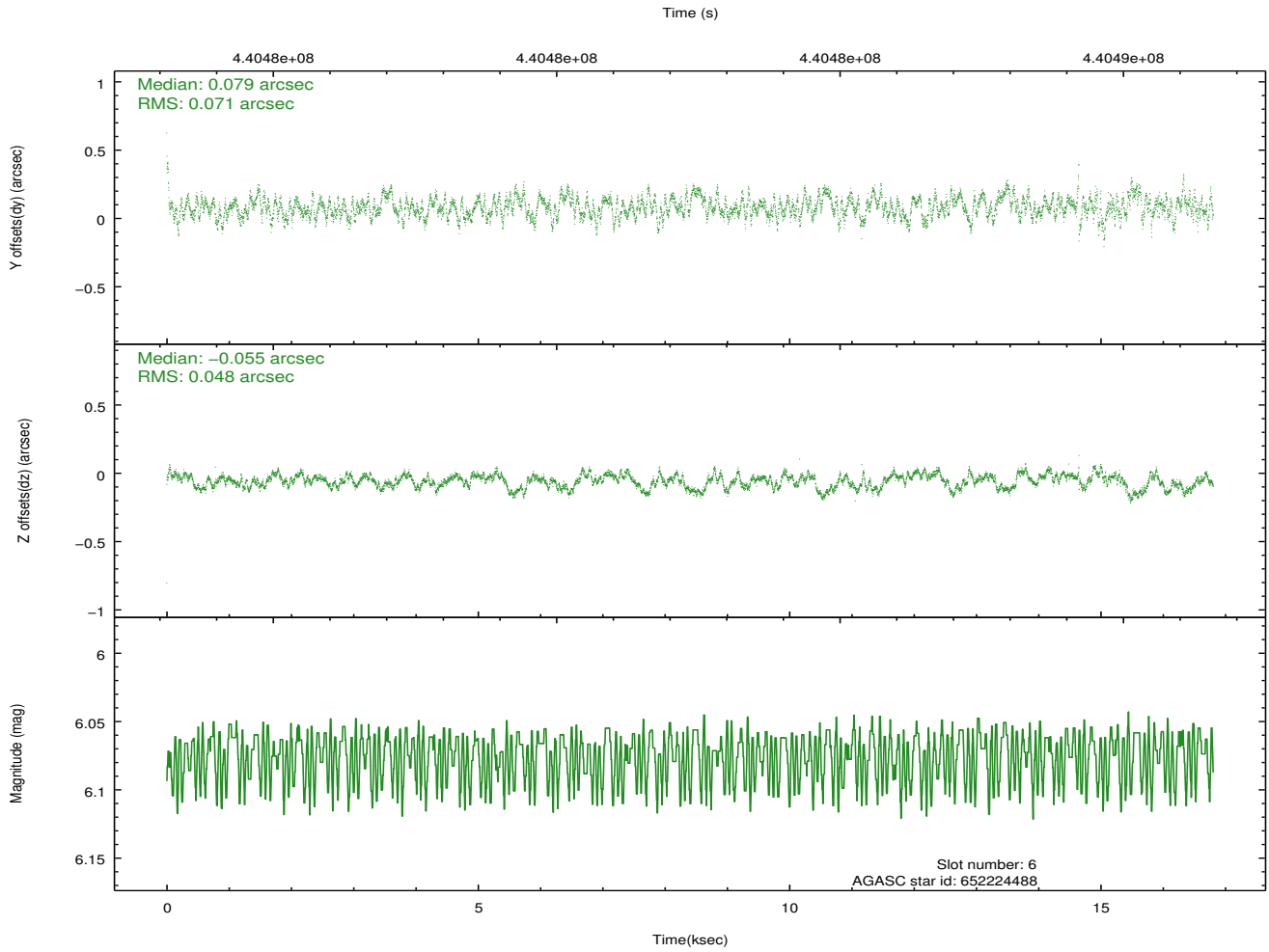
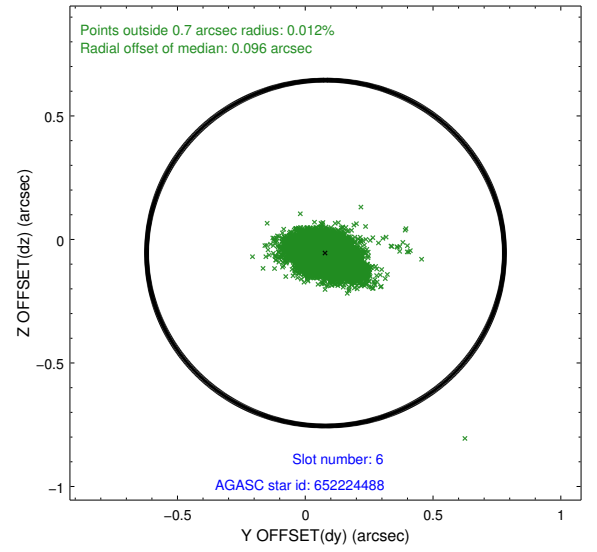
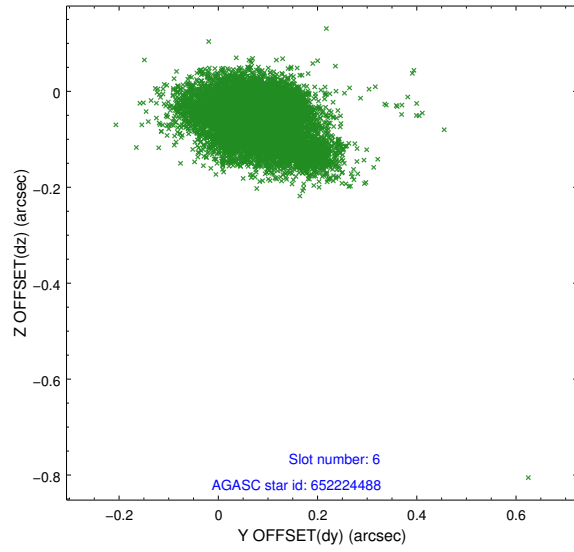




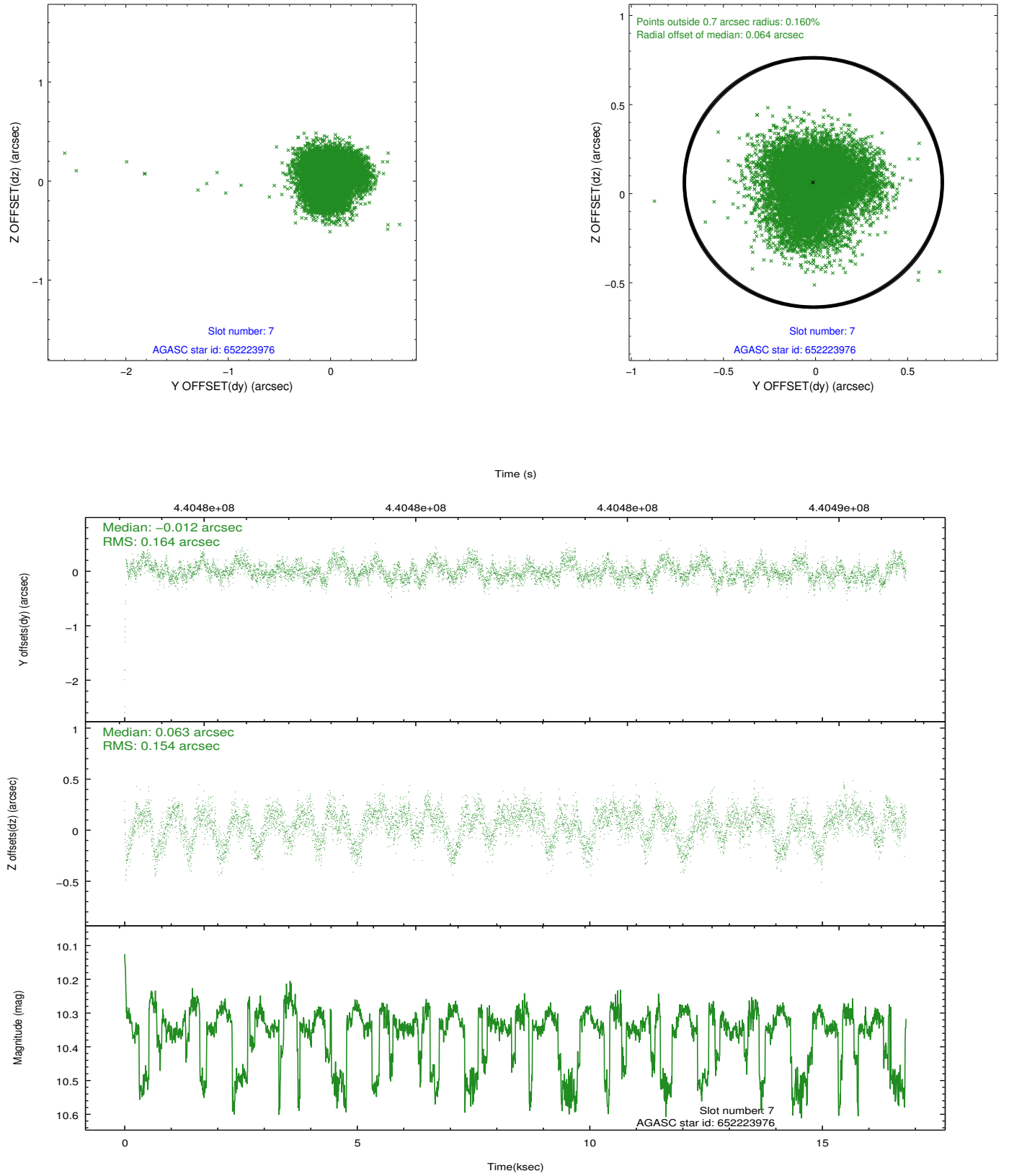
### 2.4.3 Slot 5



## 2.4.4 Slot 6

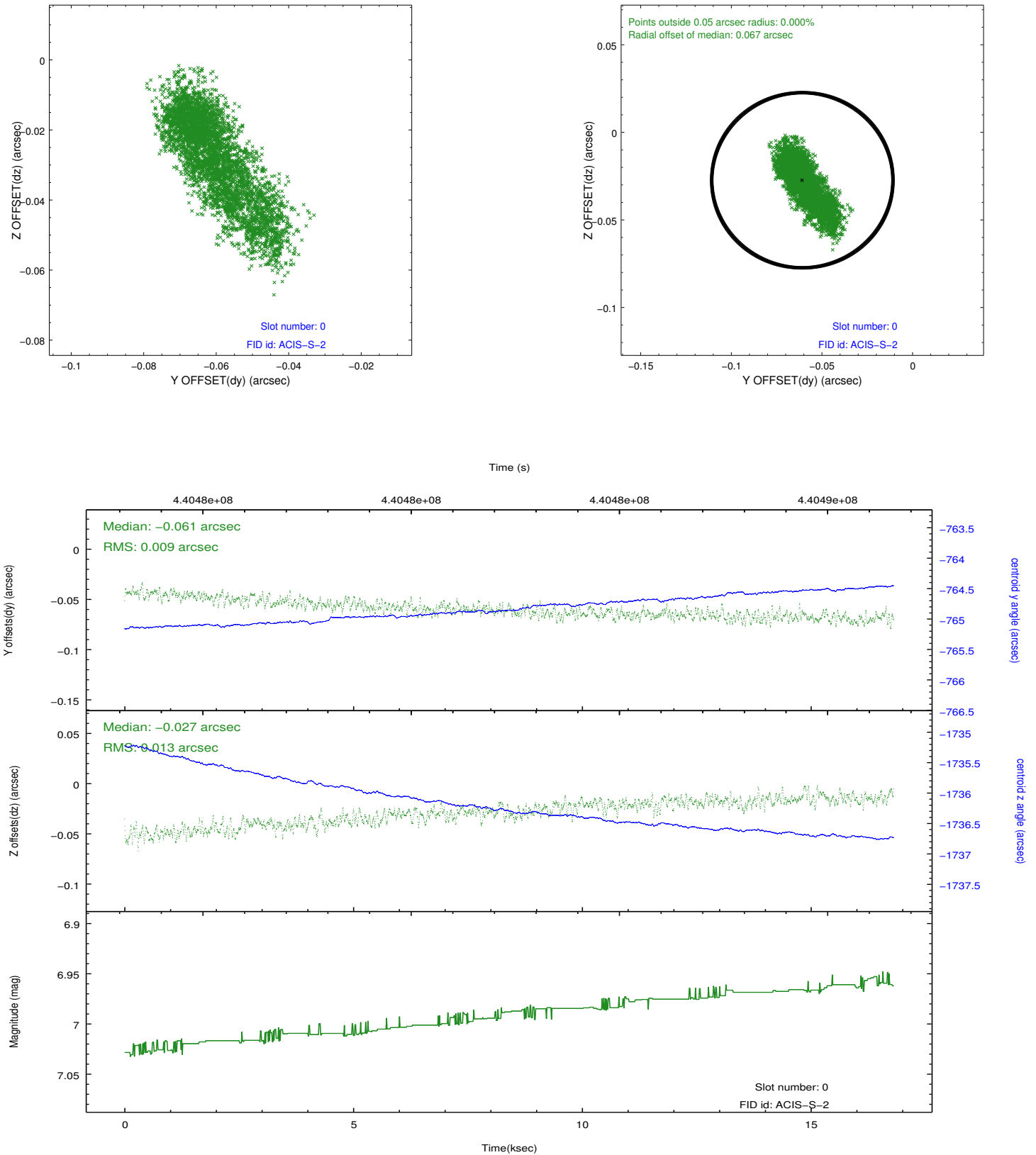


## 2.4.5 Slot 7

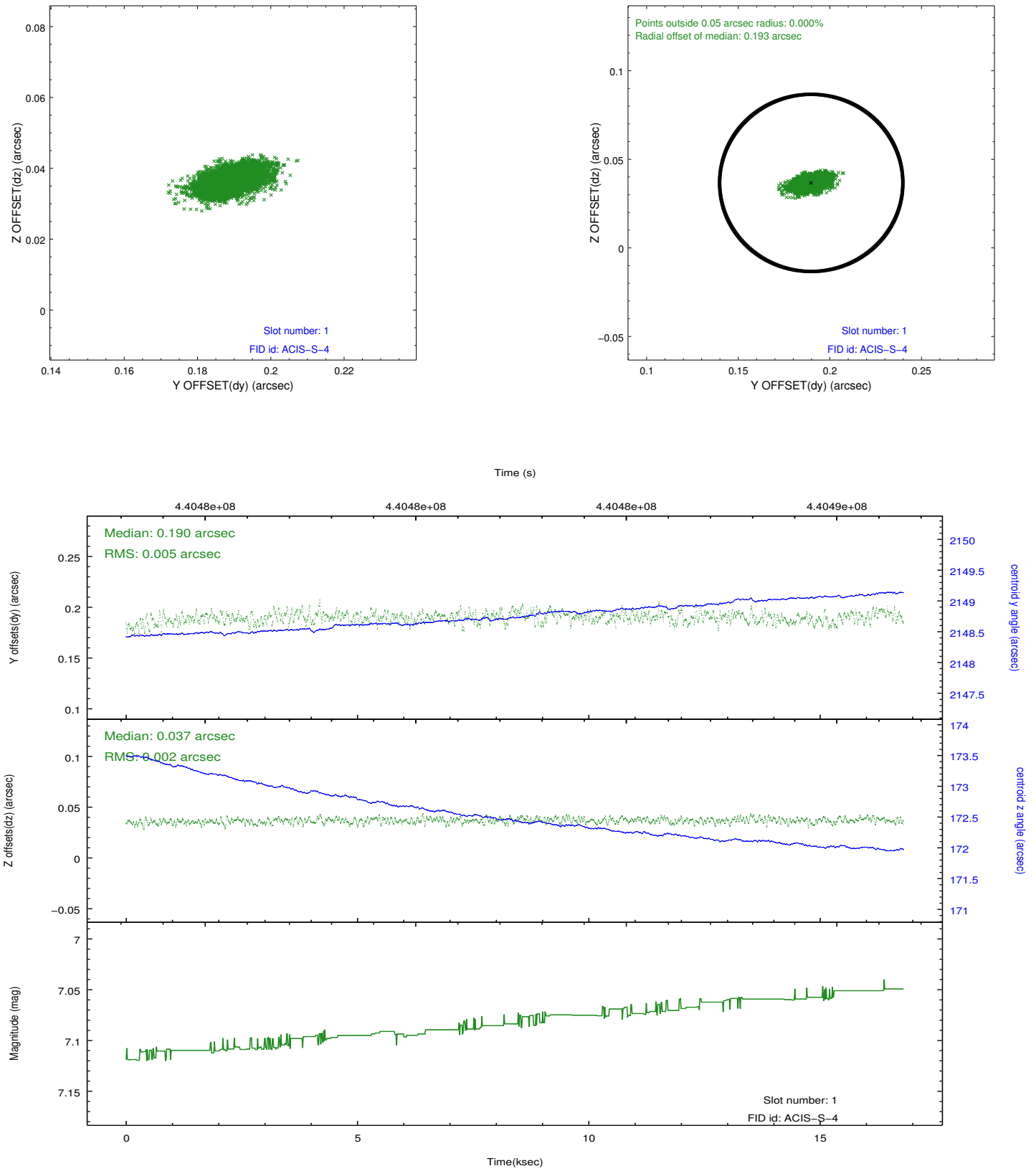


## 2.5 FID Slots

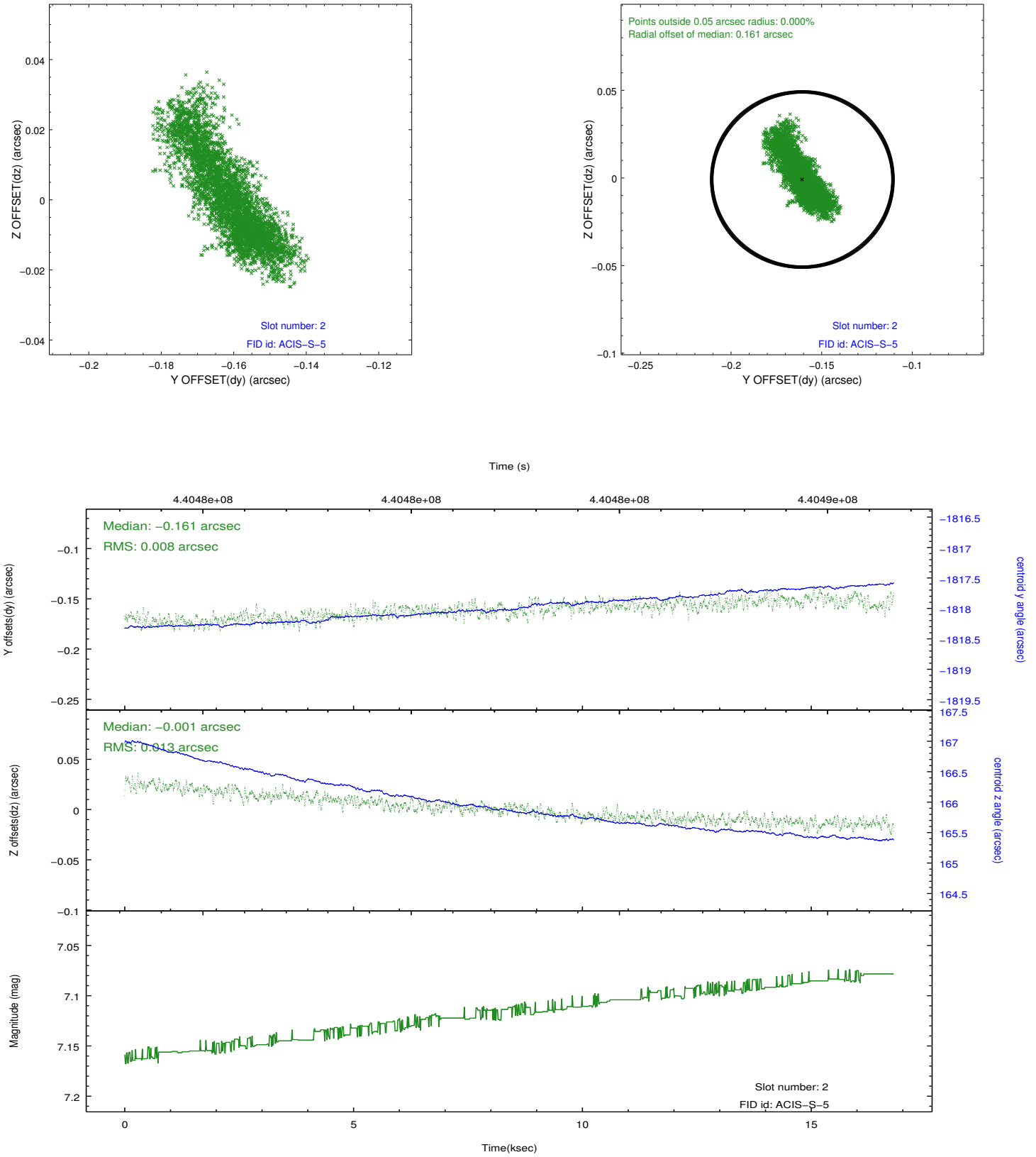
### 2.5.1 Slot 0



## 2.5.2 Slot 1



### 2.5.3 Slot 2



## A Summary

### A.1 Status

V&V Scientist	Beth Sundheim
V&V Date (YYYY-MM-DD)	2012.02.29
V&V Edition	1
V&V Disposition and Status	OK
V&V Charge Time	16.712100128531

### A.2 Comments