

V&V Reference Report

L2 ASCDS Version : 8.4.3

Observation 12900 - L2 Version 2
Chandra X-Ray Center

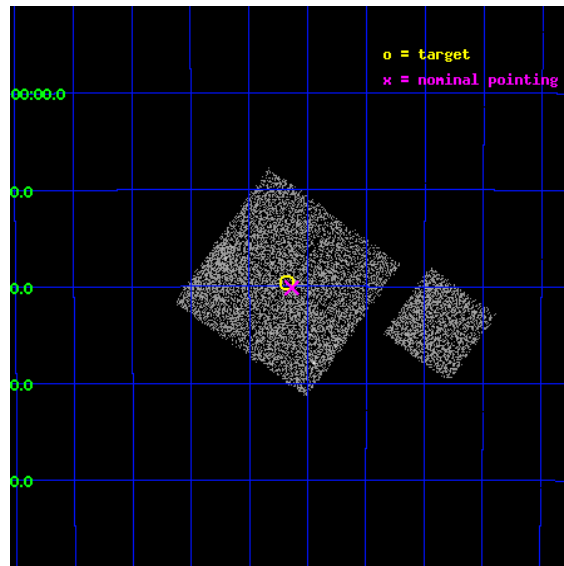
L2 Processing Date : Feb 19 2012

Contents

1	Front	2
2	OBI	3
2.1	OBI	3
2.1.1	Images	3
2.1.2	Bias	3
2.1.3	Parameters	4
2.1.4	Events	4
2.2	Compared Parameters	5
2.3	Aspect	6
2.4	Star Slots	9
2.4.1	Slot 3	9
2.4.2	Slot 4	10
2.4.3	Slot 5	11
2.4.4	Slot 6	12
2.4.5	Slot 7	13
2.5	FID Slots	14
2.5.1	Slot 0	14
2.5.2	Slot 1	15
2.5.3	Slot 2	16
A	Summary	17
A.1	Status	17
A.2	Comments	17

1 Front

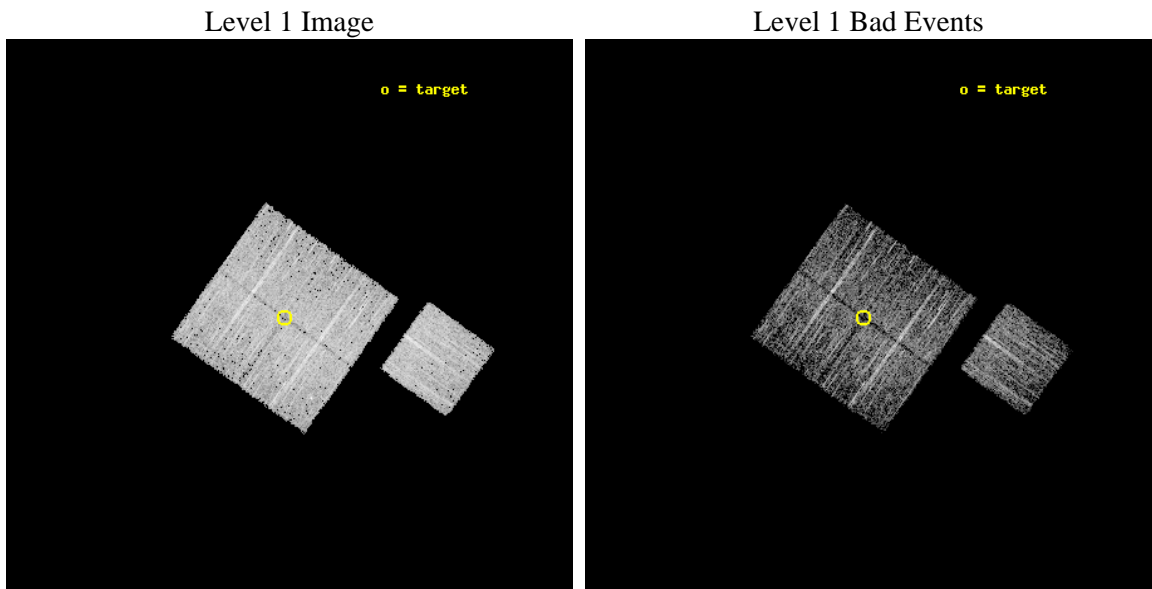
seq_num	801037	Sequence number
obs_id	12900	Observation id
title	The Outer Limits of Clusters with Chandra and Suzaku	Proposal titl
observer	Dr. Eric Miller	Principal investigator
object	RXCJ0605_Field2	Source name
dtcycle	0	
cycle	P	events from which exps? Prim/Second/Both
ra_targ	91.168839	Observer's specified target RA [deg]
dec_targ	-35.327061	Observer's specified target Dec [deg]
ra_nom	91.158893095147	Nominal RA [deg]
dec_nom	-35.335724591916	Nominal Dec [deg]
roll_nom	125.63215366572	Nominal Roll [deg]
revision	2	Processing version of data
ontime	4772.8214615583	Sum of GTIs [s]
livetime	4710.461035463	Livetime [s]
ontime0	4772.780421555	Sum of GTIs [s]
ontime1	4772.8214615583	Sum of GTIs [s]
ontime2	4772.8624917269	Sum of GTIs [s]
ontime3	4769.7625213265	Sum of GTIs [s]
ontime6	4772.739371717	Sum of GTIs [s]
l2events	14573	Number of level 2 events



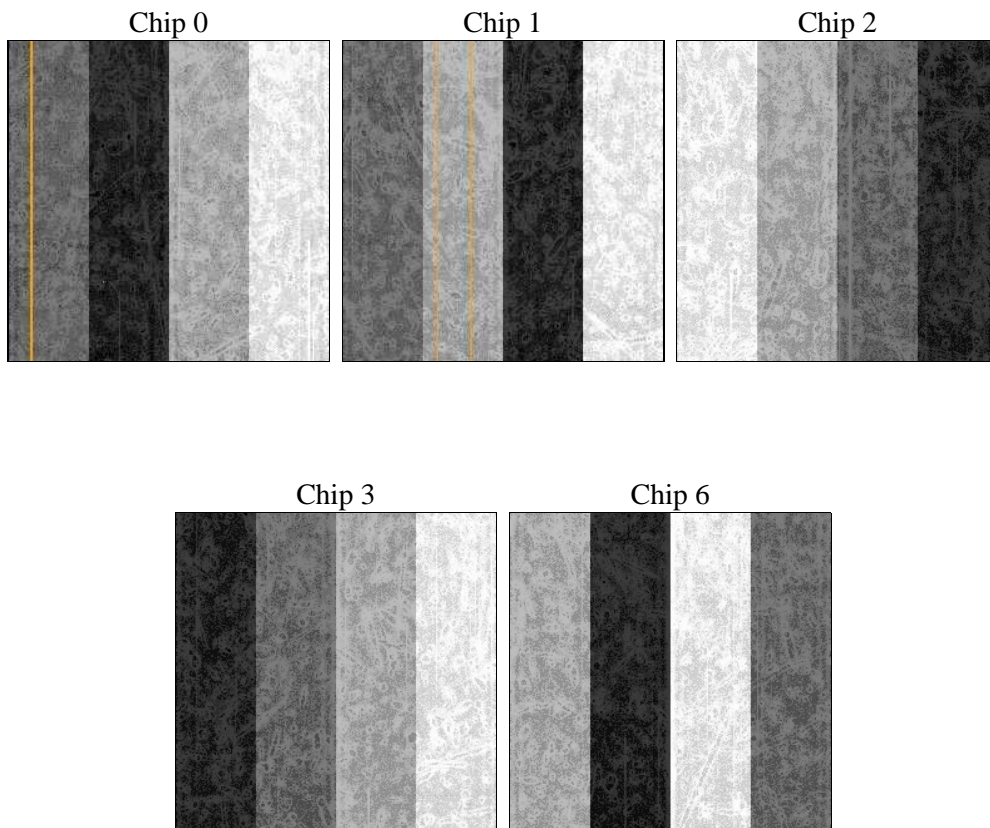
2 OBI

2.1 OBI

2.1.1 Images



2.1.2 Bias



2.1.3 Parameters

obi_num	0	Obi number	sched_exp_time	5000.000000	[s] Scheduled observation exposure time
ascdsver	8.4.3	Processing system revision	ontime	4772.8214615583	Sum of GTIs [s]
caldbver	4.4.8	 	ontime0	4772.780421555	Sum of GTIs [s]
date	2012-02-19T23:30:31	Date and time of file creation	ontime1	4772.8214615583	Sum of GTIs [s]
revision	2	Processing version of data	ontime2	4772.8624917269	Sum of GTIs [s]
			ontime3	4769.7625213265	Sum of GTIs [s]
			ontime6	4772.739371717	Sum of GTIs [s]
			l1events	143082	Number of level 1 events

2.1.4 Events

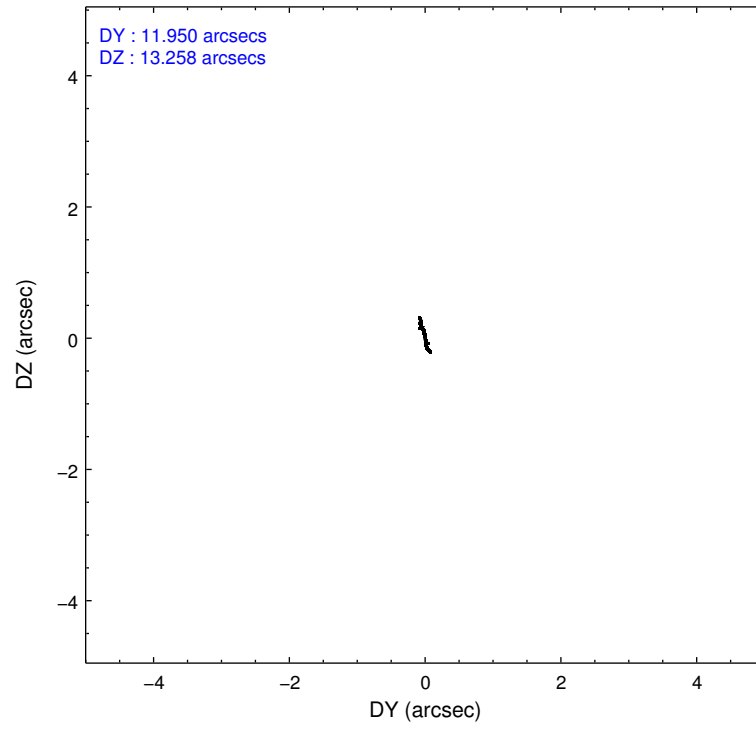
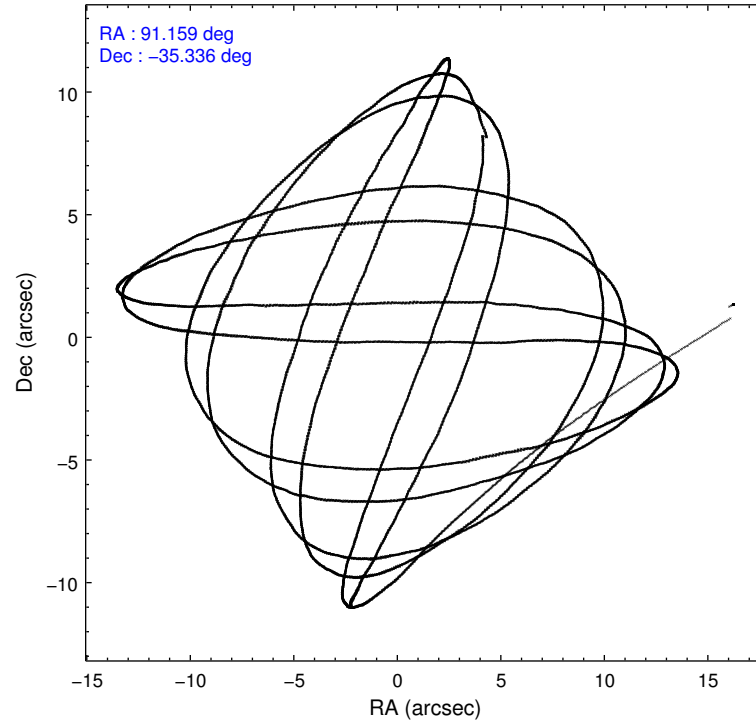
	ccd 0	ccd 1	ccd 2	ccd 3	ccd 6
level 1 events	26784	28447	28823	29193	29835
rejected events	23460	24604	25722	25752	26386
rejected %	87%	86%	89%	88%	88%

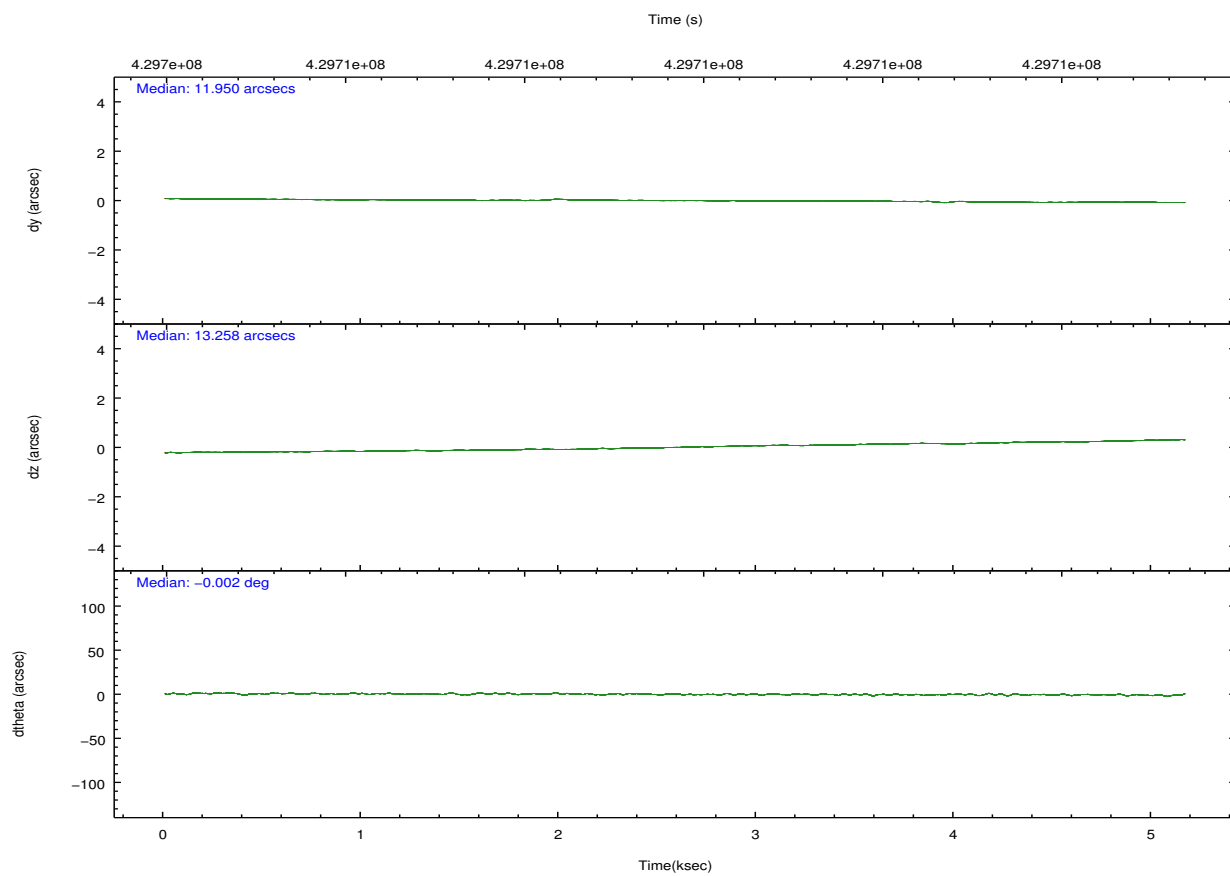
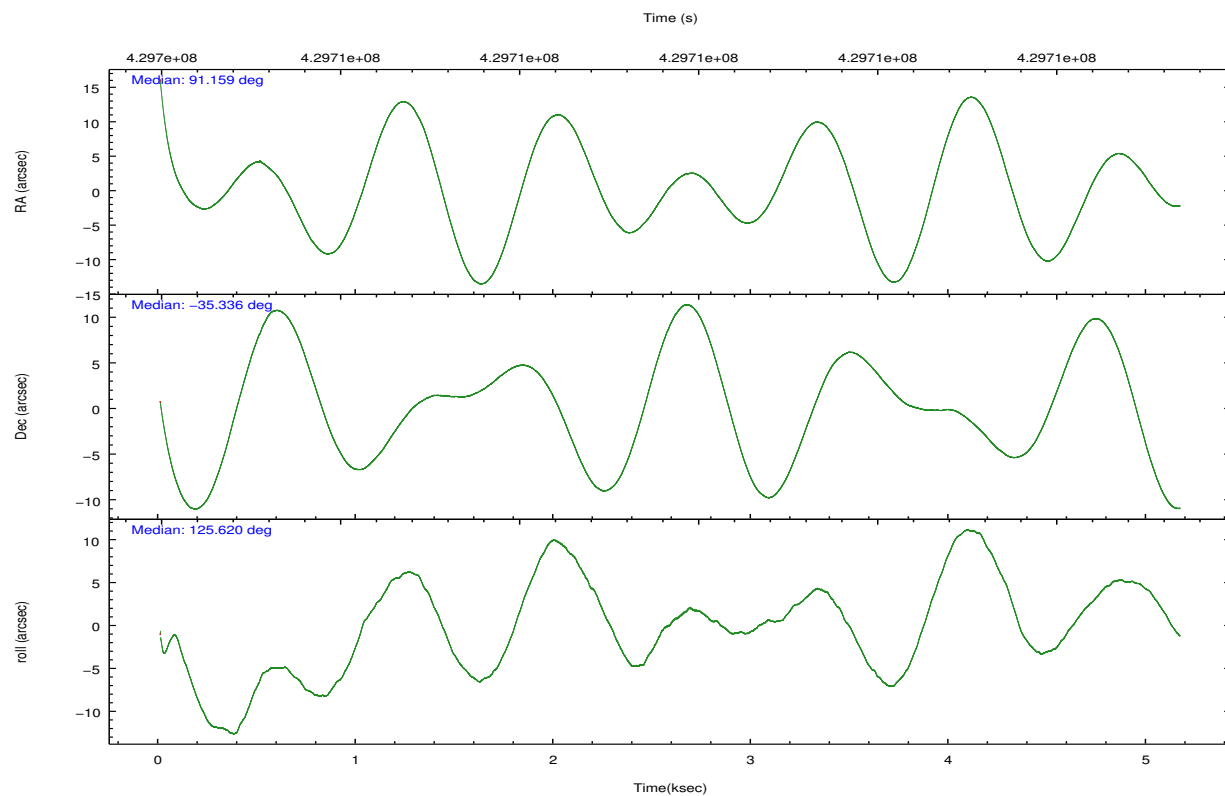
	ccd 0	ccd 1	ccd 2	ccd 3	ccd 6
grade 0 events	1172	1326	1112	1288	1185
	4%	4%	3%	4%	3%
grade 1 events	9	14	15	13	13
	0%	0%	0%	0%	0%
grade 2 events	818	931	763	745	784
	3%	3%	2%	2%	2%
grade 3 events	373	379	310	362	385
	1%	1%	1%	1%	1%
grade 4 events	298	389	303	355	324
	1%	1%	1%	1%	1%
grade 5 events	1277	1341	1251	1366	1426
	4%	4%	4%	4%	4%
grade 6 events	670	818	614	693	773
	2%	2%	2%	2%	2%
grade 7 events	22167	23249	24455	24371	24945
	82%	81%	84%	83%	83%

2.2 Compared Parameters

Parameter	Planned	Actual	Parameter	Planned	Actual
Instrument	ACIS	ACIS	Obspar format version number	7	7
Detector	ACIS-01236	ACIS-01236	Obspar file type	PREDICTED	ACTUAL
Grating	NONE	NONE	Obspar update status	NONE	UPDATED
Data mode	VFAINT	VFAINT	CCD I0 on	Y	Y
Observation mode	POINTING	POINTING	CCD I1 on	Y	Y
[deg] Pointing RA	91.189648	91.15889309514732	CCD I2 on	Y	Y
[deg] Pointing Dec	-35.346888	-35.33572459191612	CCD I3 on	Y	Y
[deg] Pointing Roll	125.441274	125.6321536657196	CCD S0 on	N	N
[mm] SIM focus pos	-0.782348	-0.7809083437167272	CCD S1 on	N	N
[mm] SIM defocus	0	0.001439871863259334	CCD S2 on	O1	Y
[mm] SIM translation stage pos	-233.592463	-233.5874344608287	CCD S3 on	N	N
[mm] SIM translation stage offset	0	-0.005018542100998502	CCD S4 on	N	N
[s] Observation start time (MET)	429705422.184000	429704342.91193	CCD S5 on	N	N
Observation start date	2011-08-14T10:35:56	2011-08-14T10:19:02	Number of optional ACIS chips dropped	0	0
[s] Observation end time (MET)	429710422.184000	429711654.23731	On-chip summing requested	N	N
Observation end date	2011-08-14T11:59:16	2011-08-14T12:20:54	Subarray requested	NONE	NONE
Read mode	TIMED	TIMED	Alternating exposures requested	N	N
			[s] Primary exposure time	0.000000	3.1

2.3 Aspect



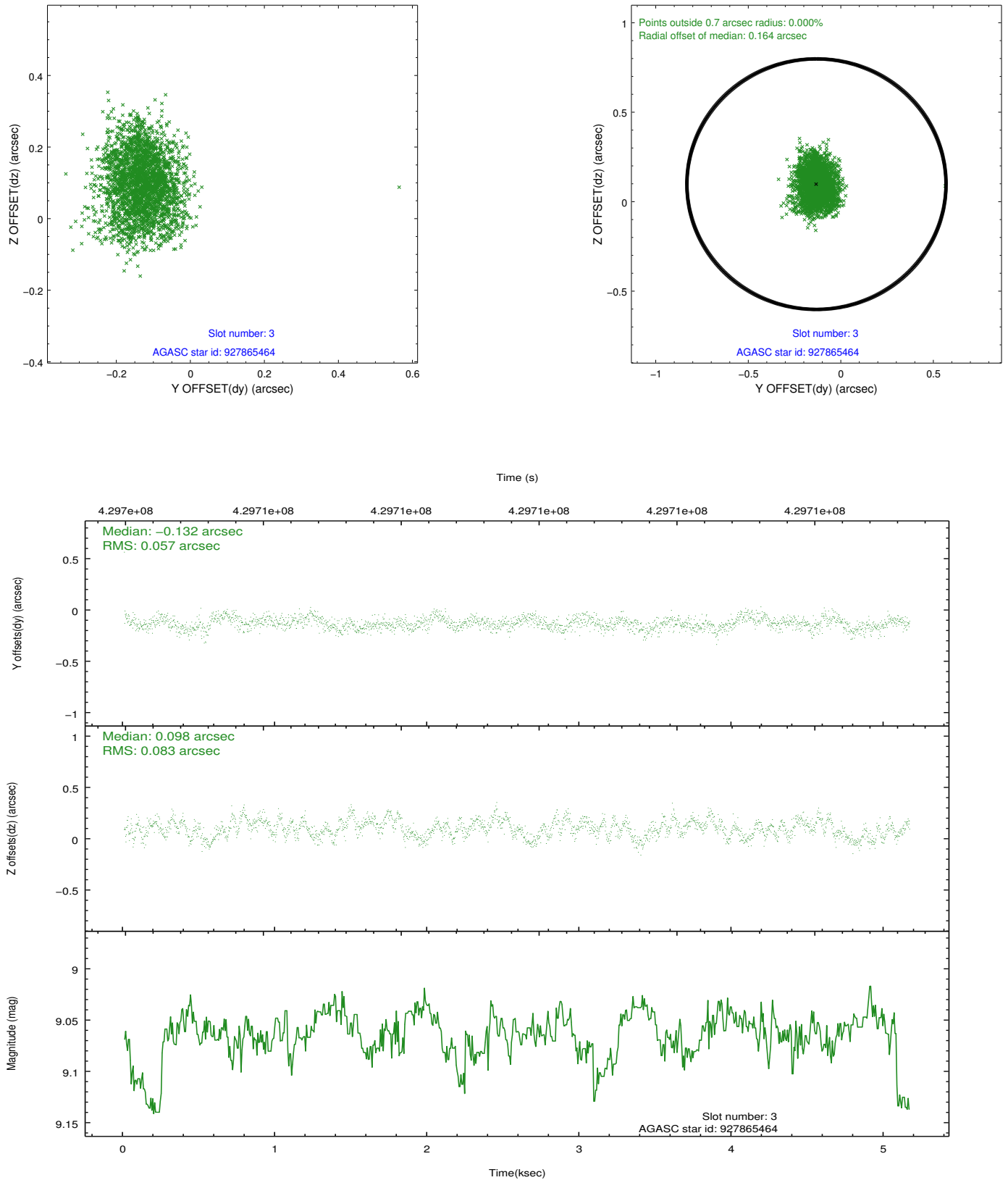


Slot Statistics

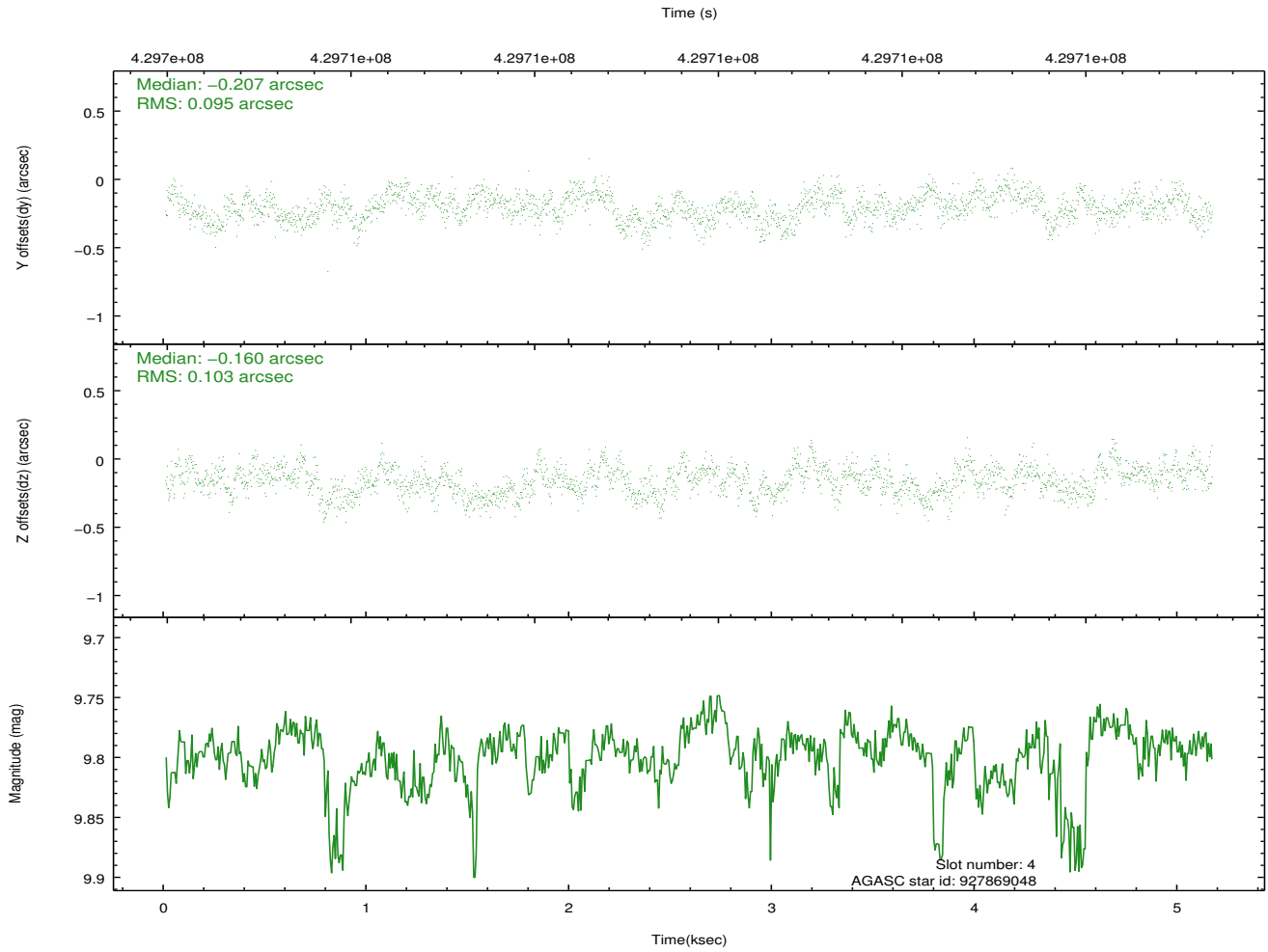
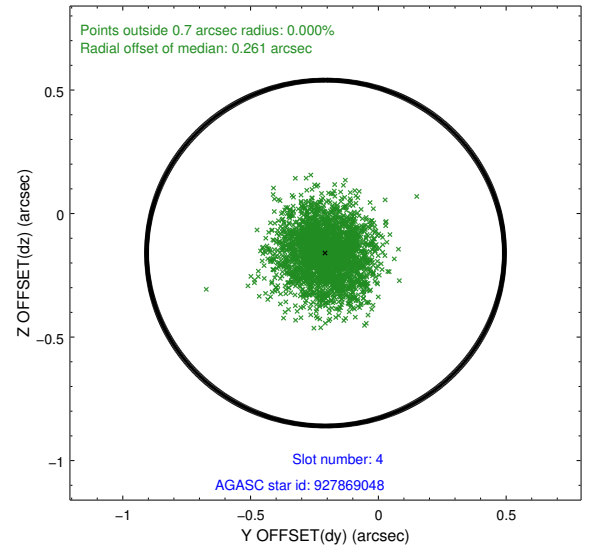
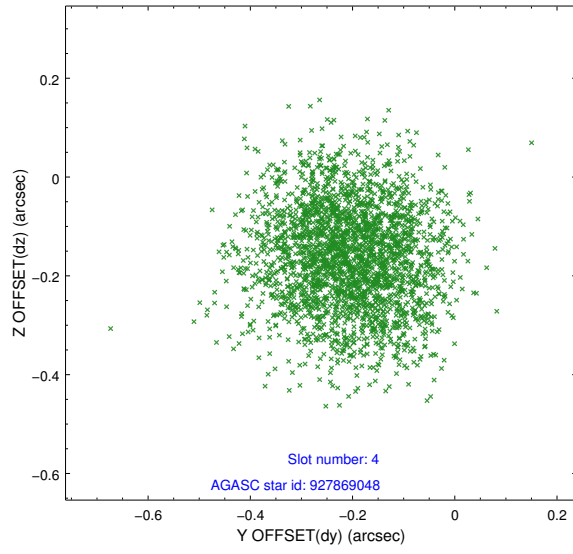
slot	status	id	mag	n_pts	med_dy	med_dz	dr1	dr2	ra	dec	mean_y	mean_z
0	FID	ACIS-I-1	7.11	1260	-0.004	0.004	0.010	0.017	0.000000	0.000000	927.59	-836.83
1	FID	ACIS-I-4	7.04	1260	0.212	0.022	0.008	0.013	0.000000	0.000000	2148.51	1062.40
2	FID	ACIS-I-5	7.11	1260	-0.307	0.044	0.008	0.016	0.000000	0.000000	-1819.19	1061.63
3	GUIDE	927865464	9.06	2518	-0.132	0.098	0.107	0.171	91.609920	-34.974508	371.94	-1785.61
4	GUIDE	927869048	9.80	2507	-0.207	-0.160	0.152	0.237	90.297724	-35.338021	1535.19	2121.80
5	GUIDE	927872808	8.17	2516	0.157	0.156	0.071	0.111	91.871506	-35.224616	-808.23	-1884.07
6	GUIDE	927872816	8.52	2519	-0.003	-0.041	0.084	0.138	91.602635	-34.723224	1119.11	-2296.57
7	GUIDE	928388624	9.72	2517	0.177	-0.052	0.129	0.210	91.126790	-35.747277	-1067.07	984.34

2.4 Star Slots

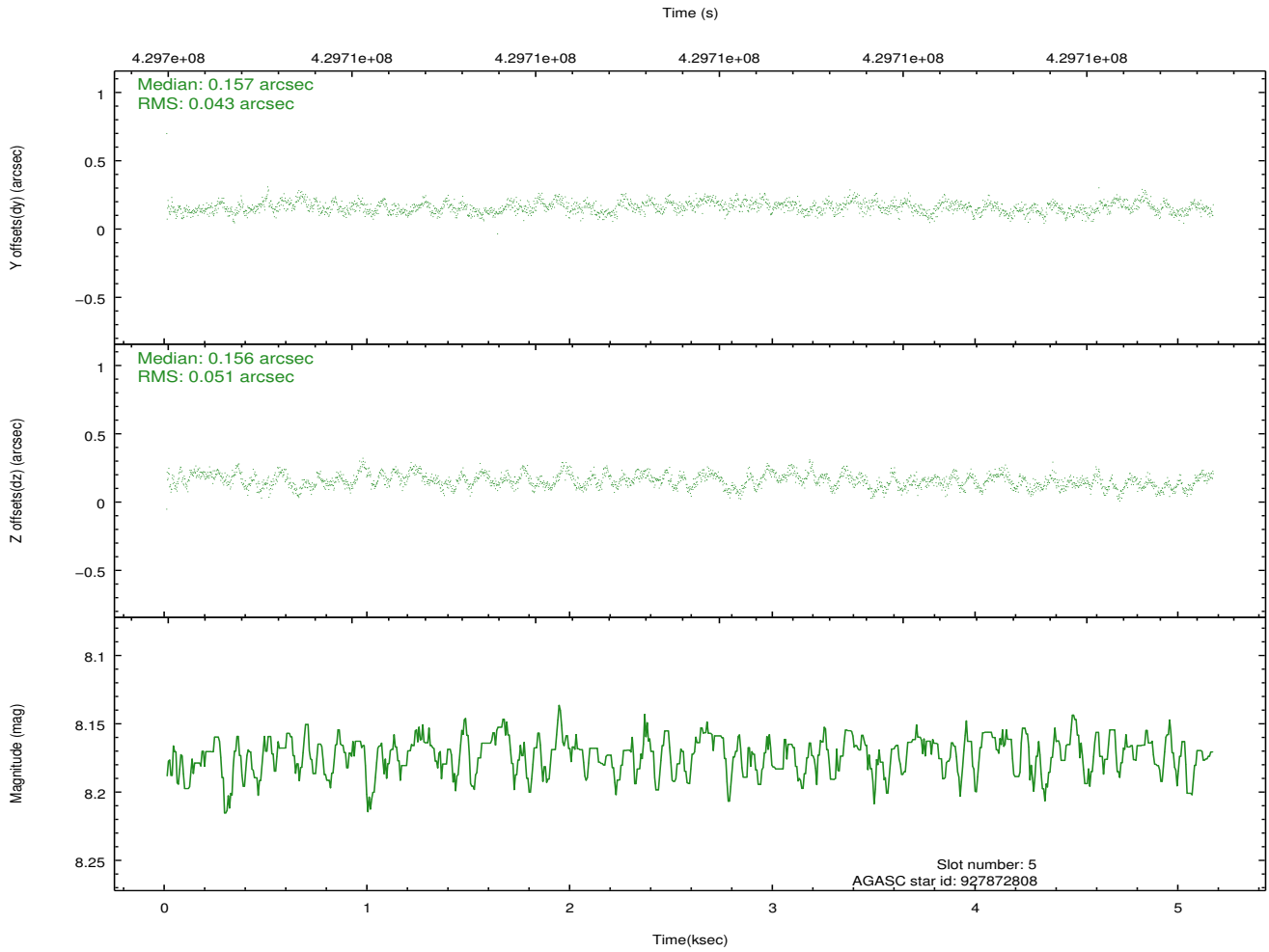
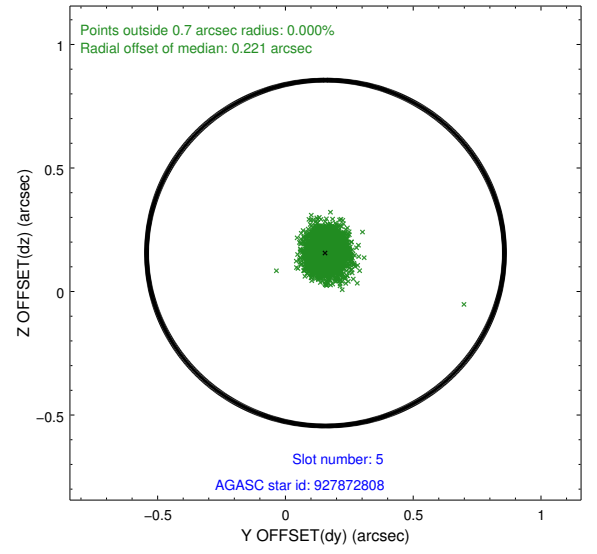
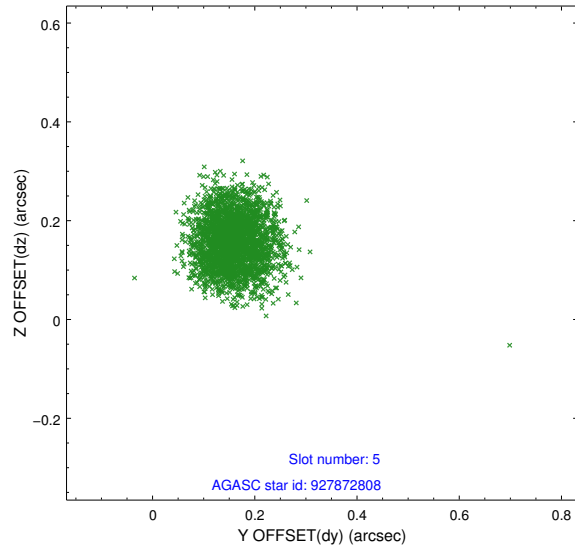
2.4.1 Slot 3



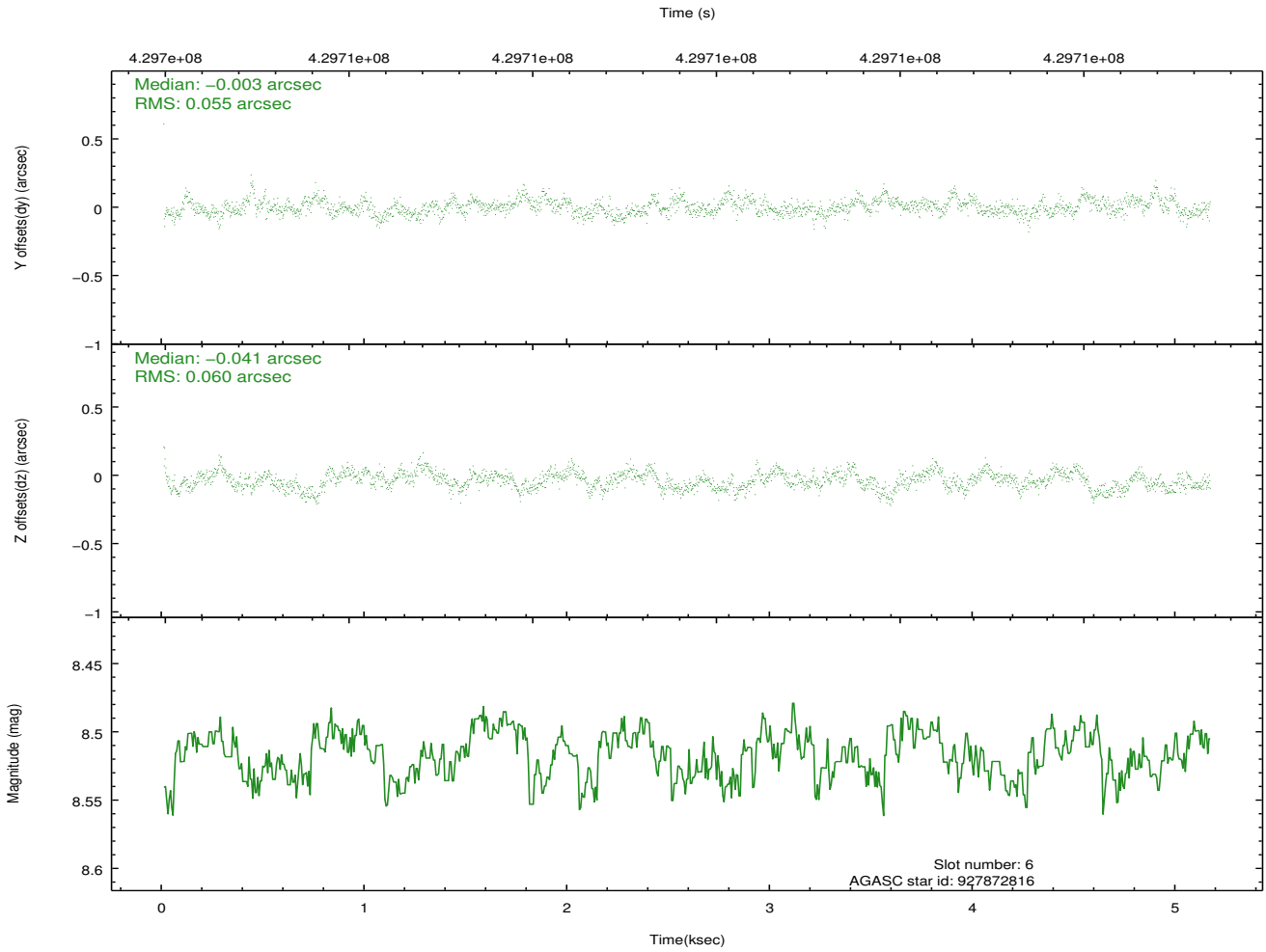
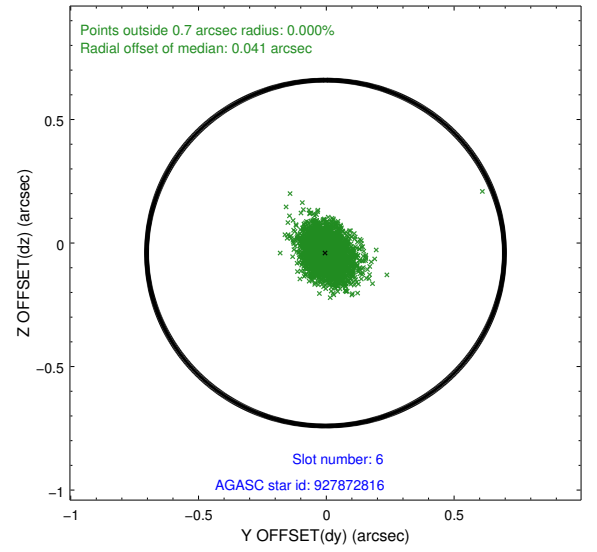
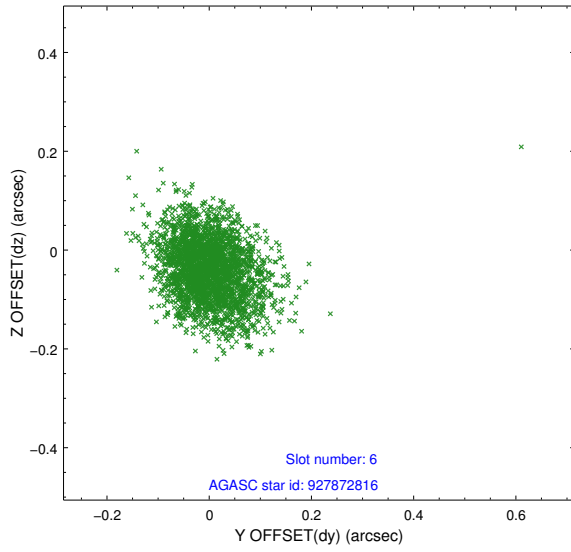
2.4.2 Slot 4



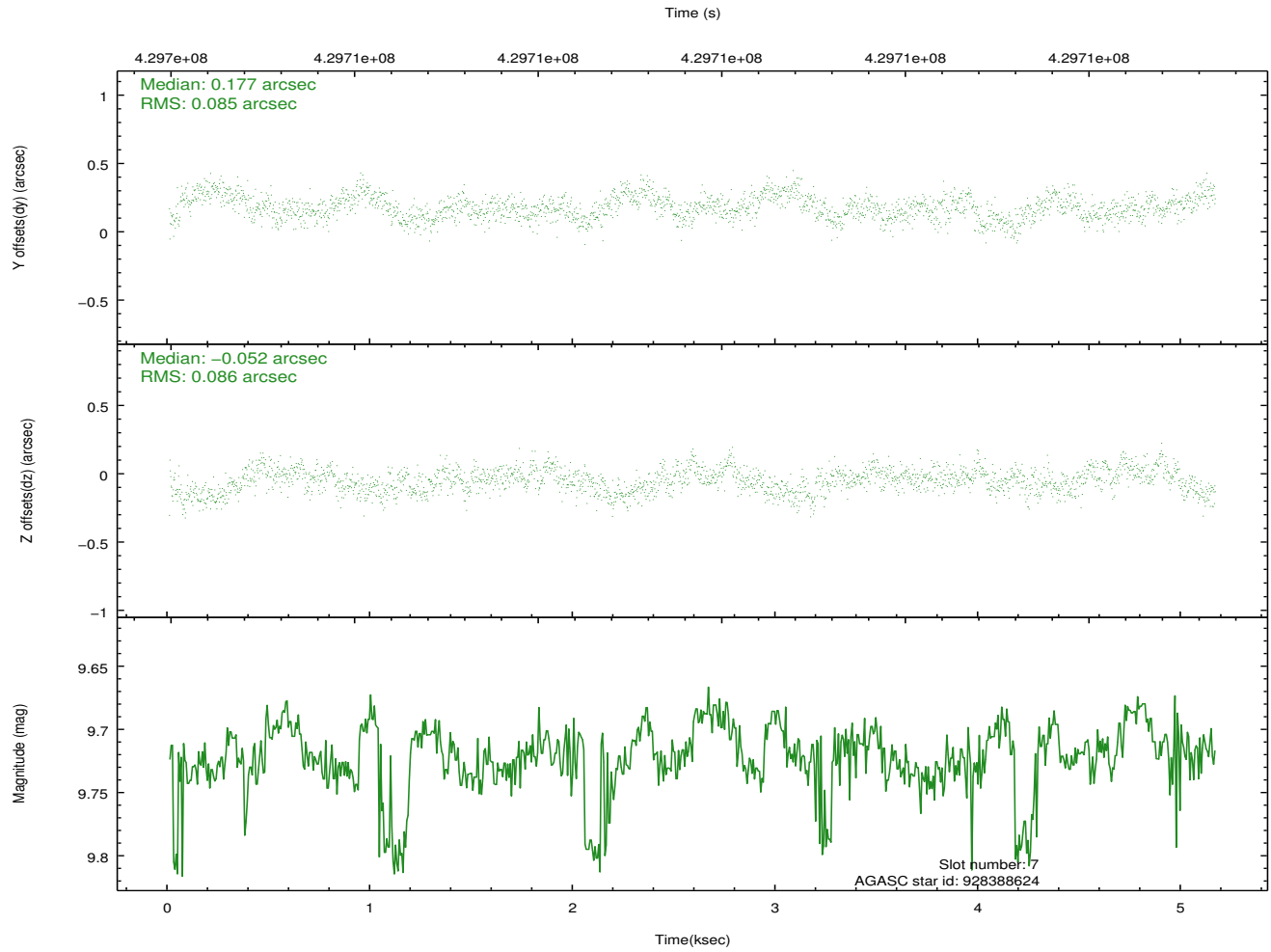
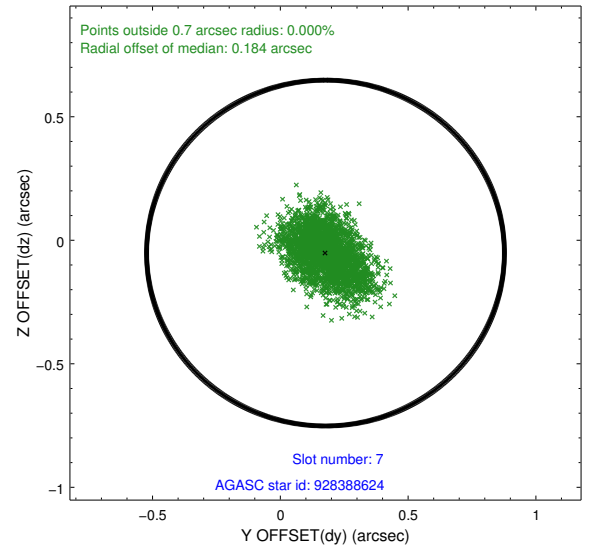
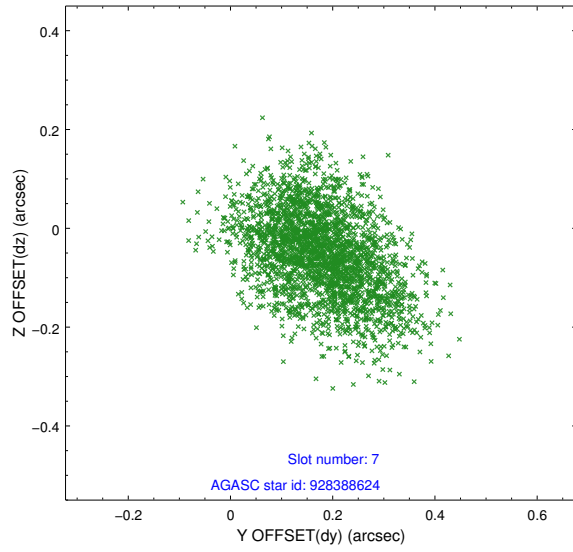
2.4.3 Slot 5



2.4.4 Slot 6

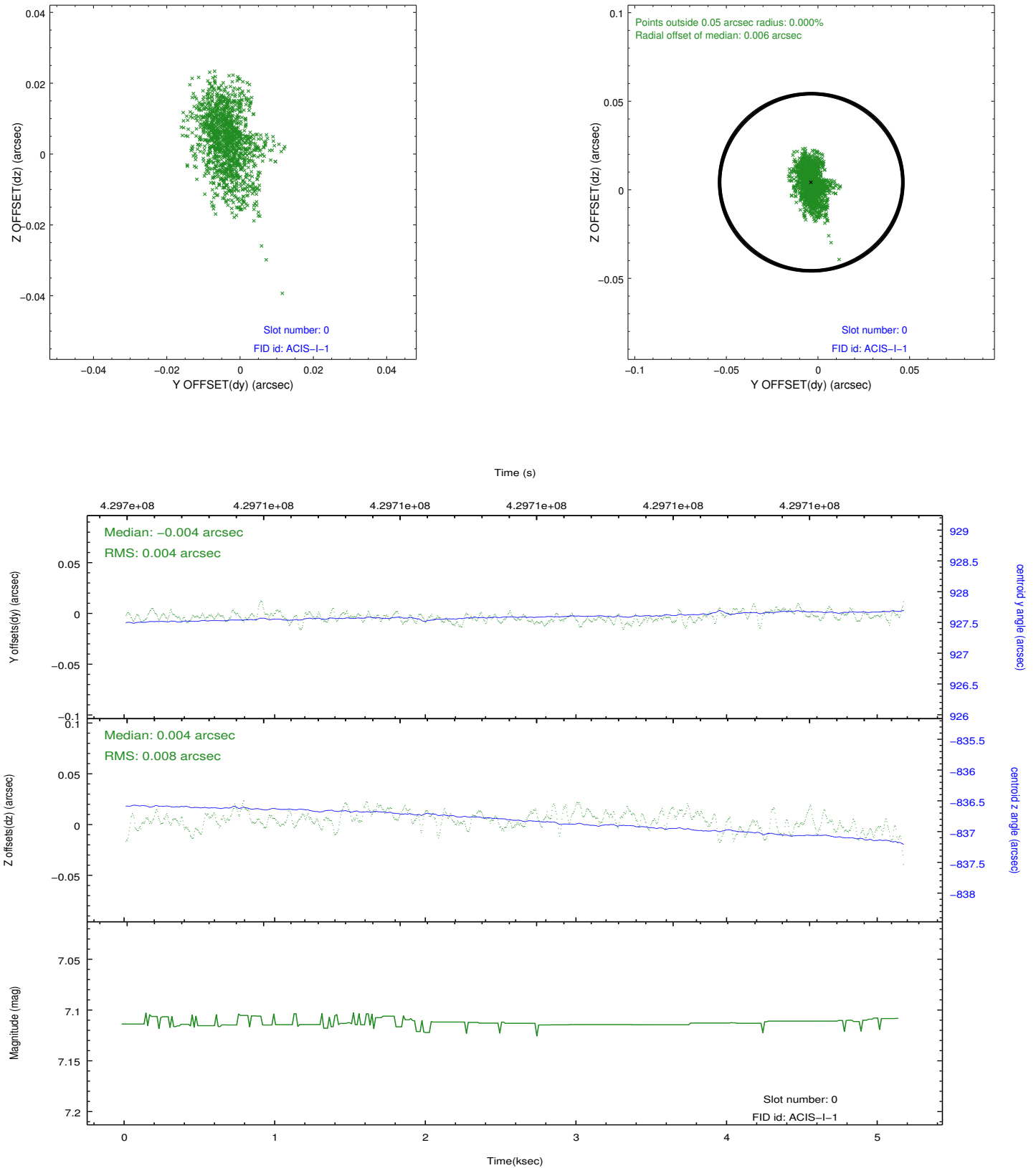


2.4.5 Slot 7

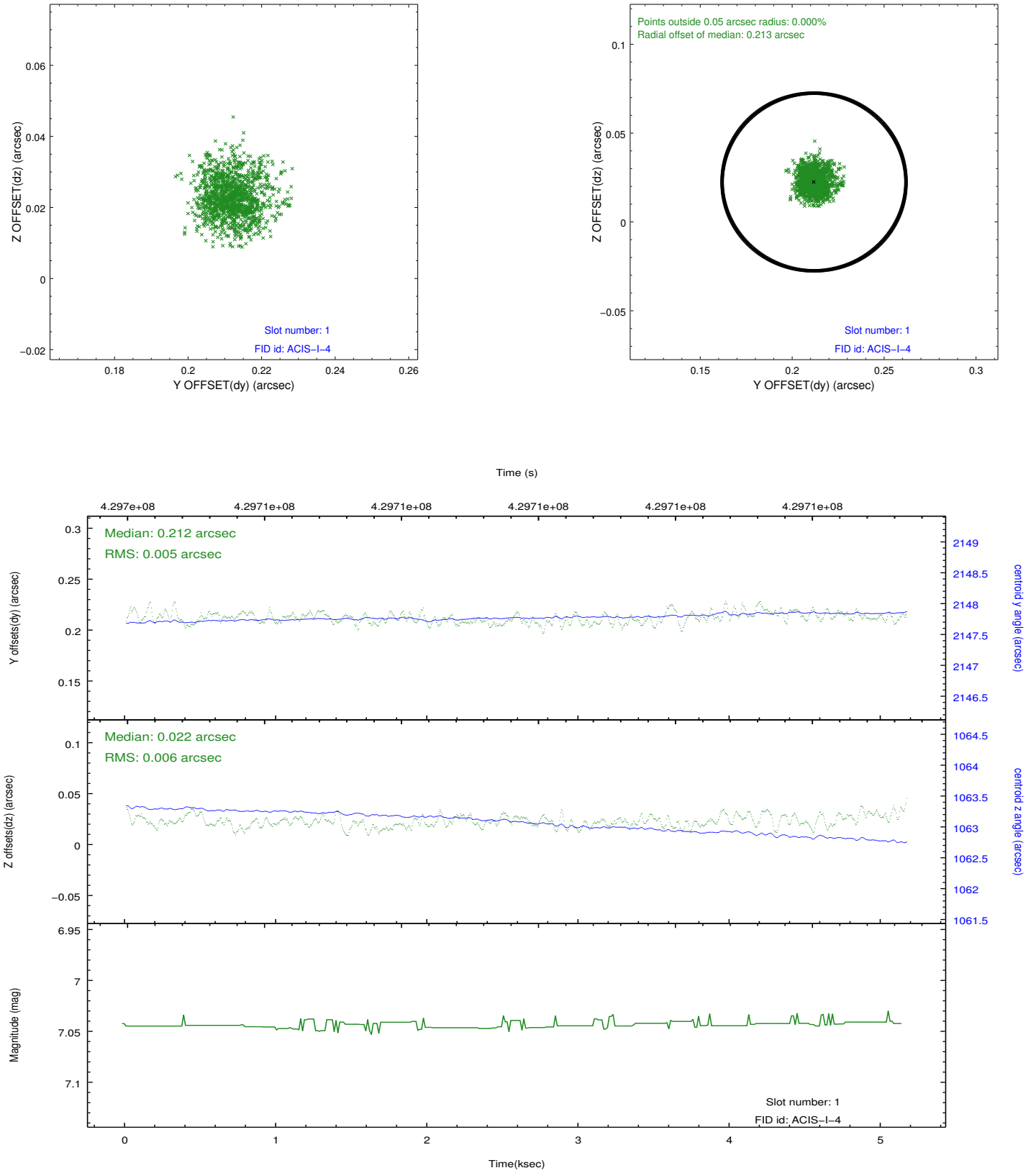


2.5 FID Slots

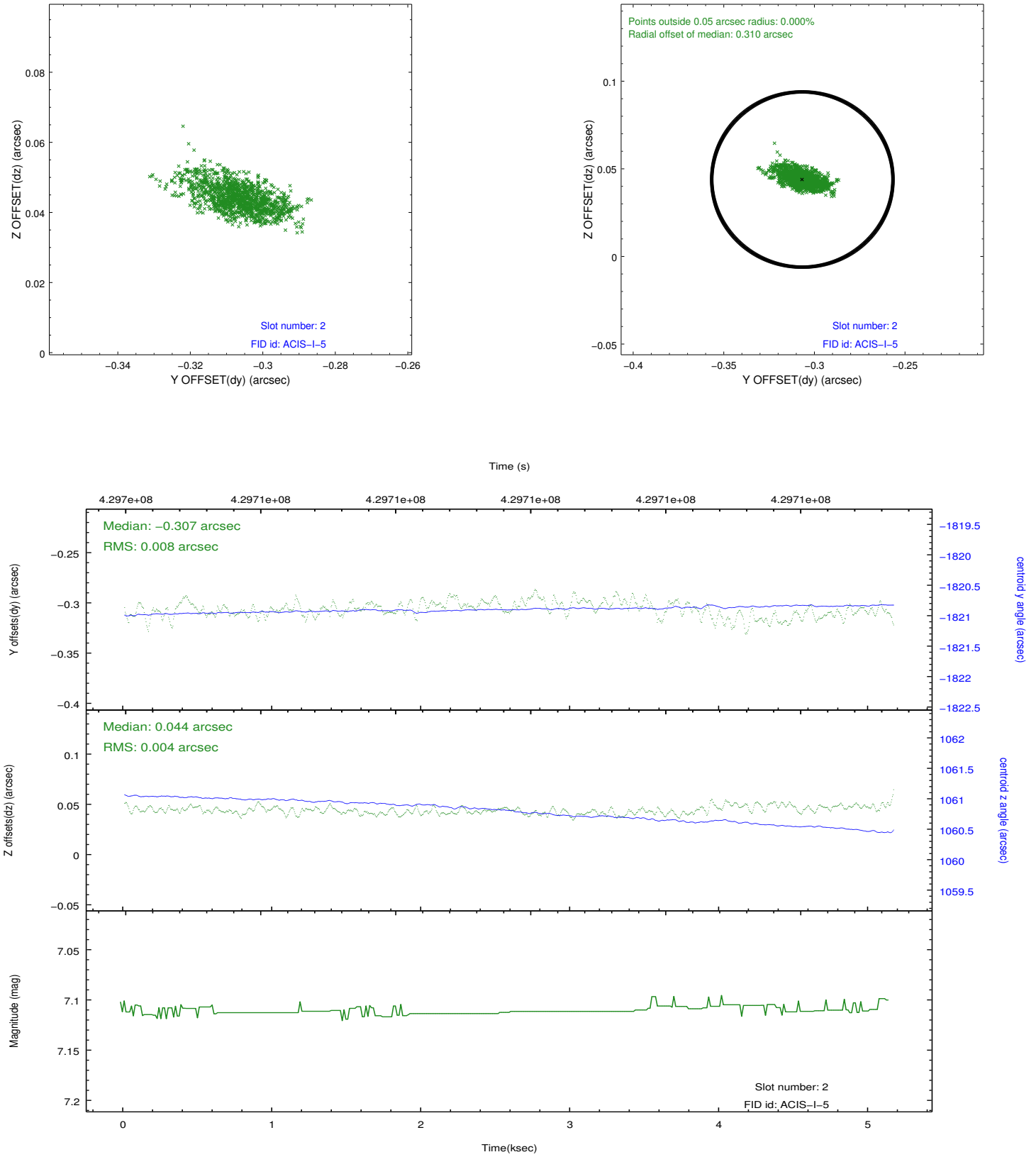
2.5.1 Slot 0



2.5.2 Slot 1



2.5.3 Slot 2



A Summary

A.1 Status

V&V Scientist	Jen Lauer
V&V Date (YYYY-MM-DD)	2012.02.21
V&V Edition	1
V&V Disposition and Status	OK
V&V Charge Time	4.7728214626312

A.2 Comments