

V&V Reference Report

L2 ASCDS Version : 8.4.5

Observation 11240 - L2 Version 3
Chandra X-Ray Center

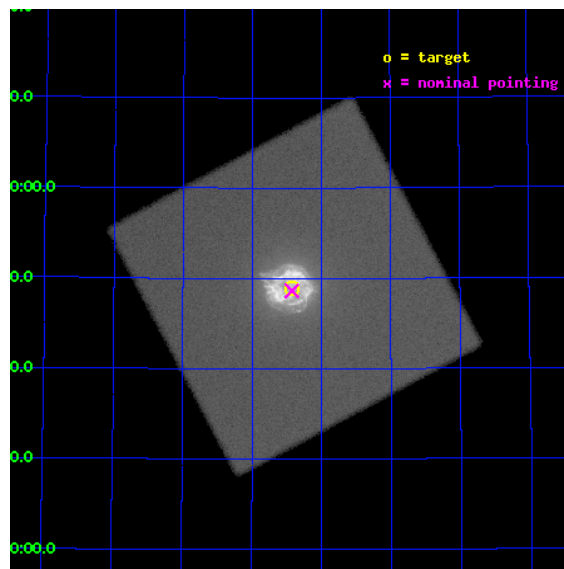
L2 Processing Date : Aug 13 2012

Contents

1	Front	2
2	OBI	3
2.1	OBI	3
2.1.1	Images	3
2.1.2	Parameters	4
2.1.3	Events	4
2.2	Compared Parameters	5
2.3	Aspect	6
2.4	Star Slots	9
2.4.1	Slot 3	9
2.4.2	Slot 4	10
2.4.3	Slot 5	11
2.4.4	Slot 6	12
2.4.5	Slot 7	13
2.5	FID Slots	14
2.5.1	Slot 0	14
2.5.2	Slot 1	15
2.5.3	Slot 2	16
A	Summary	17
A.1	Status	17
A.2	Comments	17

1 Front

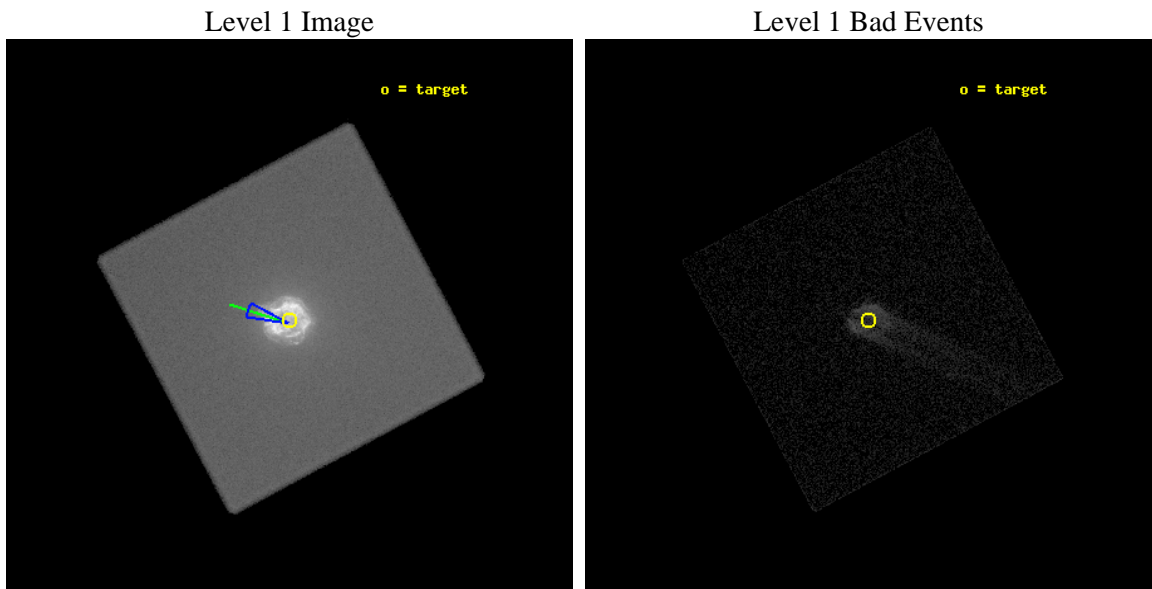
seq_num	501325	Sequence number
obs_id	11240	Observation id
title	The Proper Motion of the Central Compact Object in Cassiopeia A	Pr
observer	Dr. Tracey DeLaney	Principal investigator
object	Cassiopeia A	Source name
ra_targ	350.8575	Observer's specified target RA [deg]
dec_targ	58.814833	Observer's specified target Dec [deg]
ra_nom	350.85677883776	Nominal RA [deg]
dec_nom	58.810592666005	Nominal Dec [deg]
roll_nom	287.03515264659	Nominal Roll [deg]
revision	3	Processing version of data
ontime	14185.231966734	[s]
livetime	12400.476420508	Ontime multiplied by DTCOR
l2events	2125265	Number of level 2 events



2 OBI

2.1 OBI

2.1.1 Images



2.1.2 Parameters

obi_num	0	Obi number	sched_exp_time	14000.000000	[s] Scheduled observation exposure time
ascdsver	8.4.5	Processing system revision	ontime	14185.231966734	[s]
caldbver	4.5.1.1	 	l1events	2724539	Number of level 1 events
date	2012-08-13T19:25:23	Date and time of file creation			
revision	3	Processing version of data			

2.1.3 Events

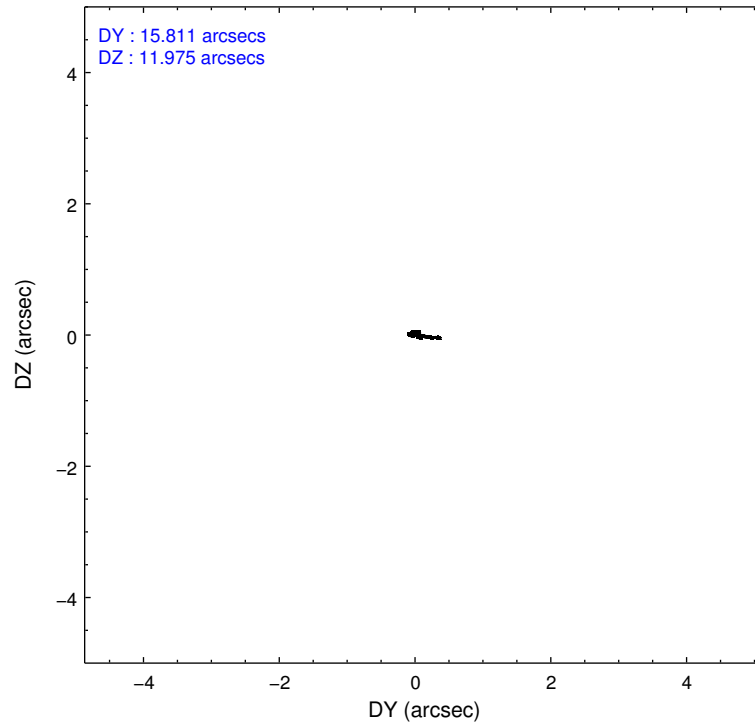
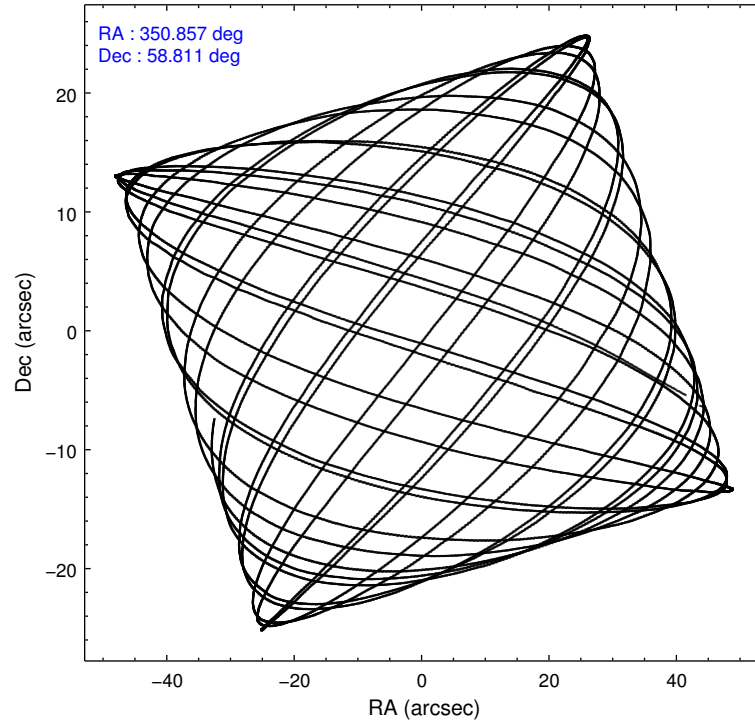
Level 1 Events

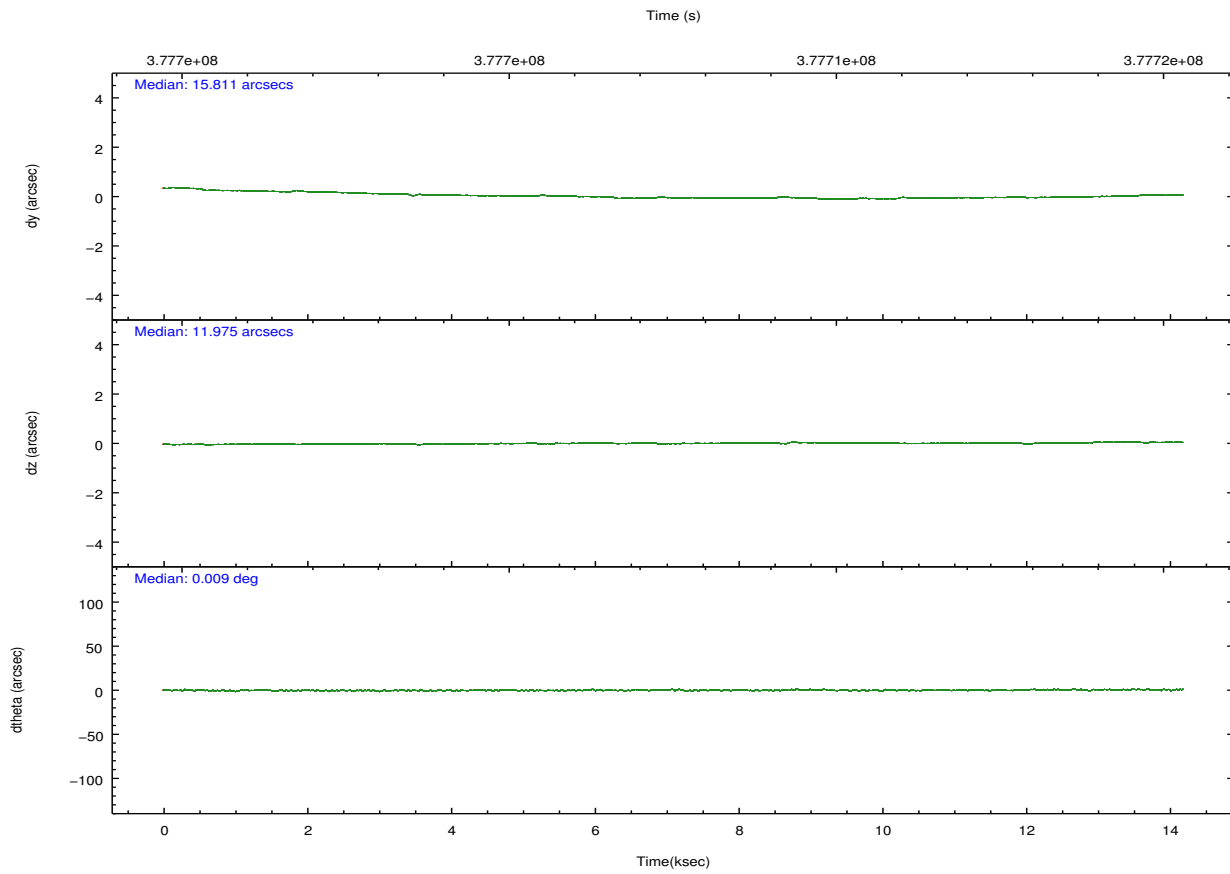
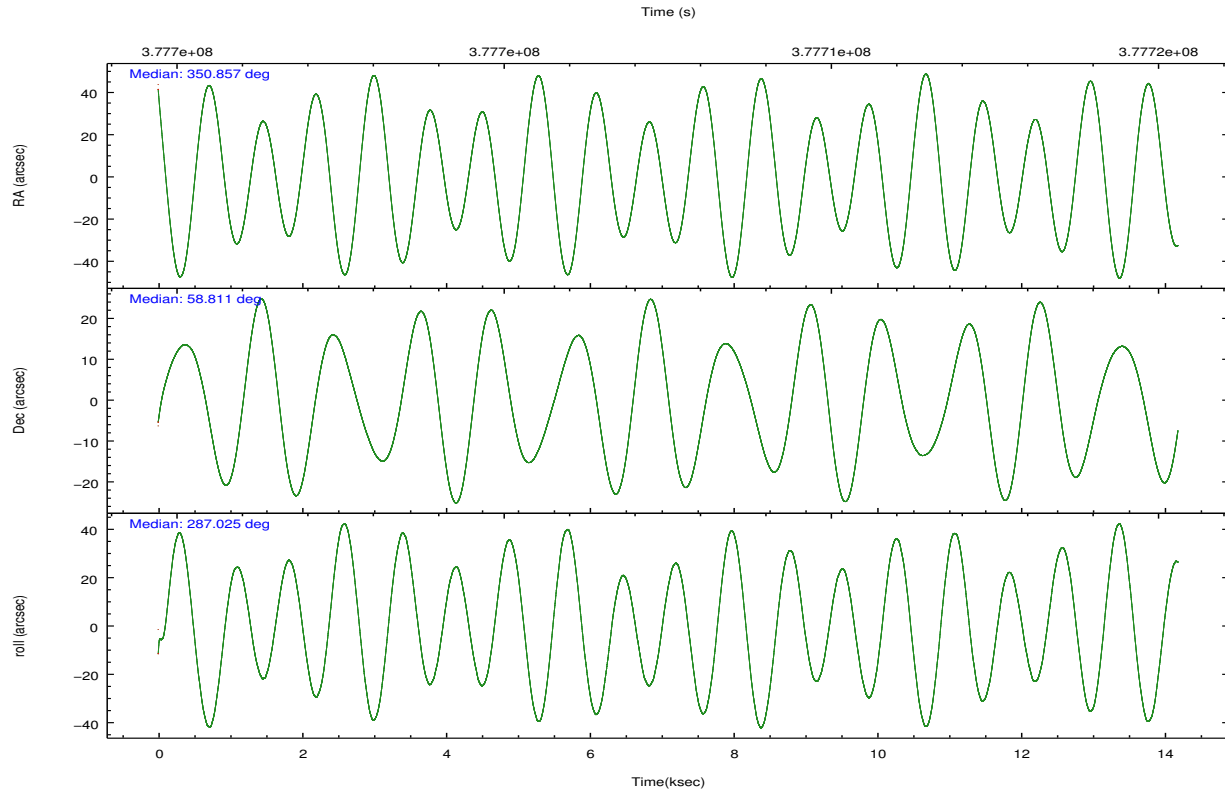
	segment 0
level 1 events	2724539
rejected events	108809
rejected %	3%

2.2 Compared Parameters

Parameter	Planned	Actual	Parameter	Planned	Actual
Instrument	HRC	HRC	Obspar format version number	7	7
Detector	HRC-I	HRC-I	Obspar file type	PREDICTED	ACTUAL
Grating	NONE	NONE	Obspar update status	NONE	UPDATED
Data mode	OBSERVING	OBSERVING			
Observation mode	POINTING	POINTING			
[deg] Pointing RA	350.817578	350.8567788377574			
[deg] Pointing Dec	58.828683	58.8105926660045			
[deg] Pointing Roll	287.164156	287.0351526465901			
[deg] Roll angle	287.130000	287.130000			
[deg] Roll tolerance	10.000000	10.000000			
Roll constraint allows 180D rotation	N	N			
[mm] SIM focus pos	-1.040293	-1.038866356238299			
[mm] SIM defocus	0	0.001426264420575141			
[mm] SIM translation stage pos	126.985494	126.9854943052878			
[mm] SIM translation stage offset	0	-5.413686238853188e-06			
[s] Observation start time (MET)	377700590.184000	377699641.31158			
Observation start date	2009-12-20T12:48:44	2009-12-20T12:34:01			
[s] Observation end time (MET)	377714590.184000	377715257.69987			
Observation end date	2009-12-20T16:42:04	2009-12-20T16:54:17			

2.3 Aspect



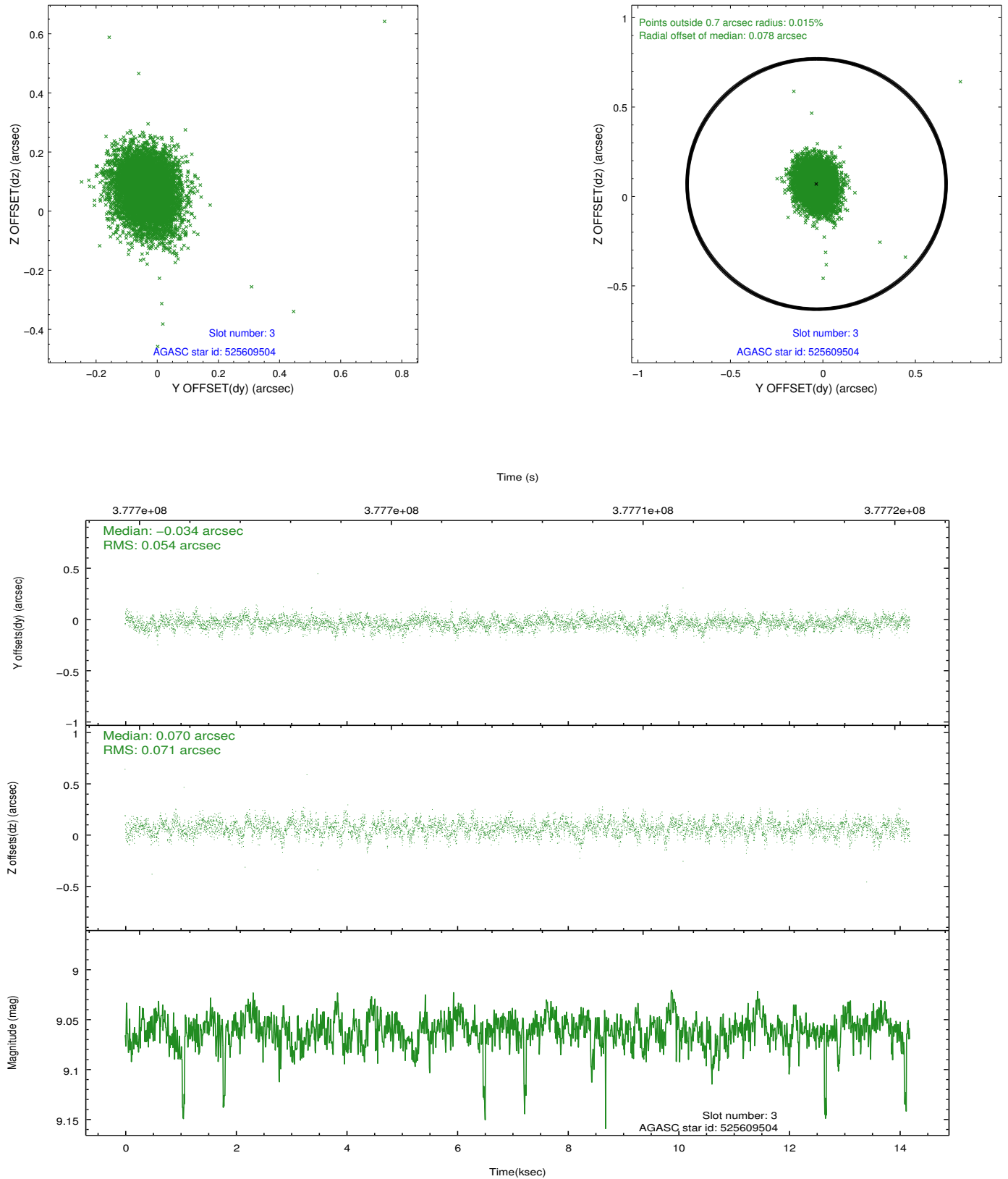


Slot Statistics

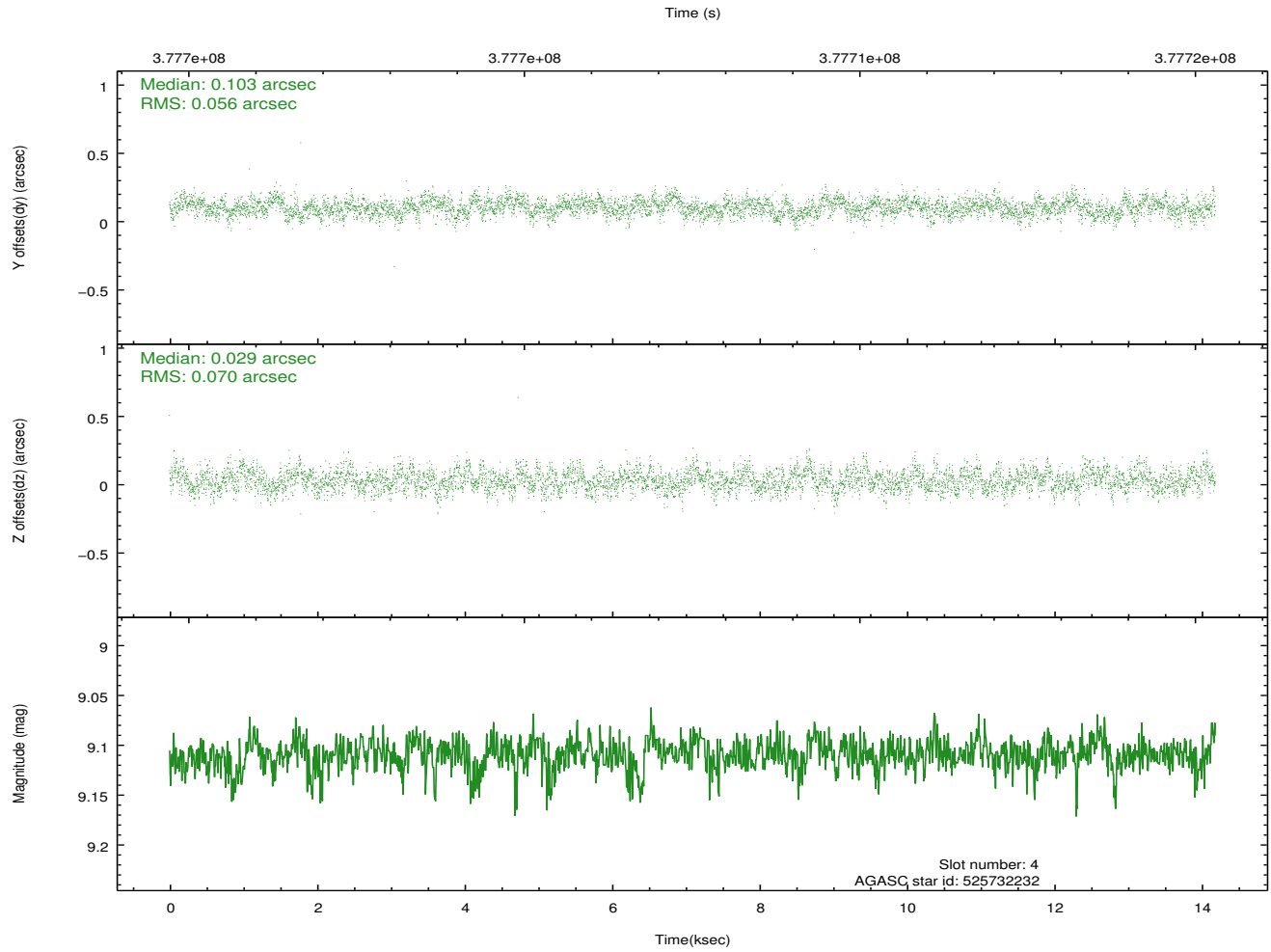
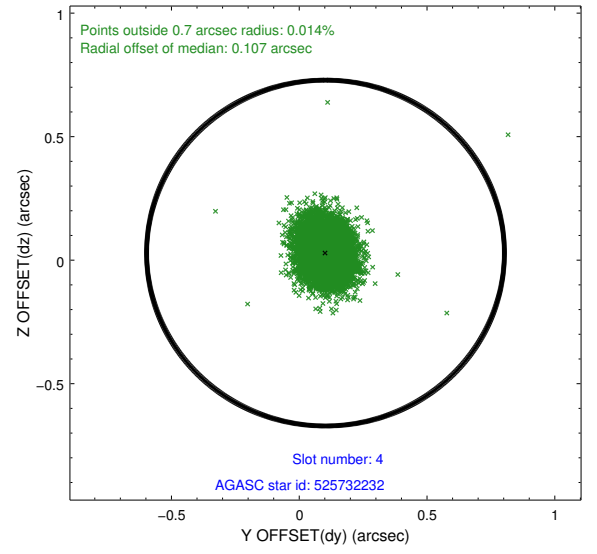
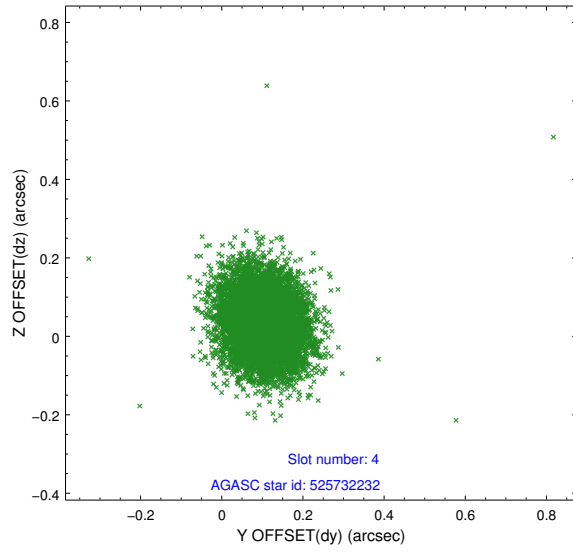
slot	status	id	mag	n_pts	med_dy	med_dz	dr1	dr2	ra	dec	mean_y	mean_z
0	FID	HRC-I-1	7.00	3460	-0.067	0.004	0.006	0.010	0.000000	0.000000	-771.77	-1300.00
1	FID	HRC-I-2	7.03	3461	0.232	-0.135	0.006	0.010	0.000000	0.000000	840.94	-1302.11
2	FID	HRC-I-3	7.09	3461	-0.046	0.041	0.005	0.011	0.000000	0.000000	-1199.95	1004.23
3	GUIDE	525609504	9.06	6897	-0.034	0.070	0.092	0.154	349.896632	58.356658	1099.53	-2159.58
4	GUIDE	525732232	9.11	6914	0.103	0.029	0.094	0.152	351.669550	58.757012	708.08	1447.78
5	GUIDE	525732488	8.41	6913	-0.011	0.019	0.077	0.127	350.087090	58.516915	660.65	-1640.41
6	GUIDE	525735456	7.05	6921	-0.094	-0.069	0.066	0.103	350.628183	59.307249	-1748.98	175.64
7	GUIDE	525735976	8.84	6916	0.036	-0.047	0.088	0.147	350.142956	58.277622	1512.97	-1803.23

2.4 Star Slots

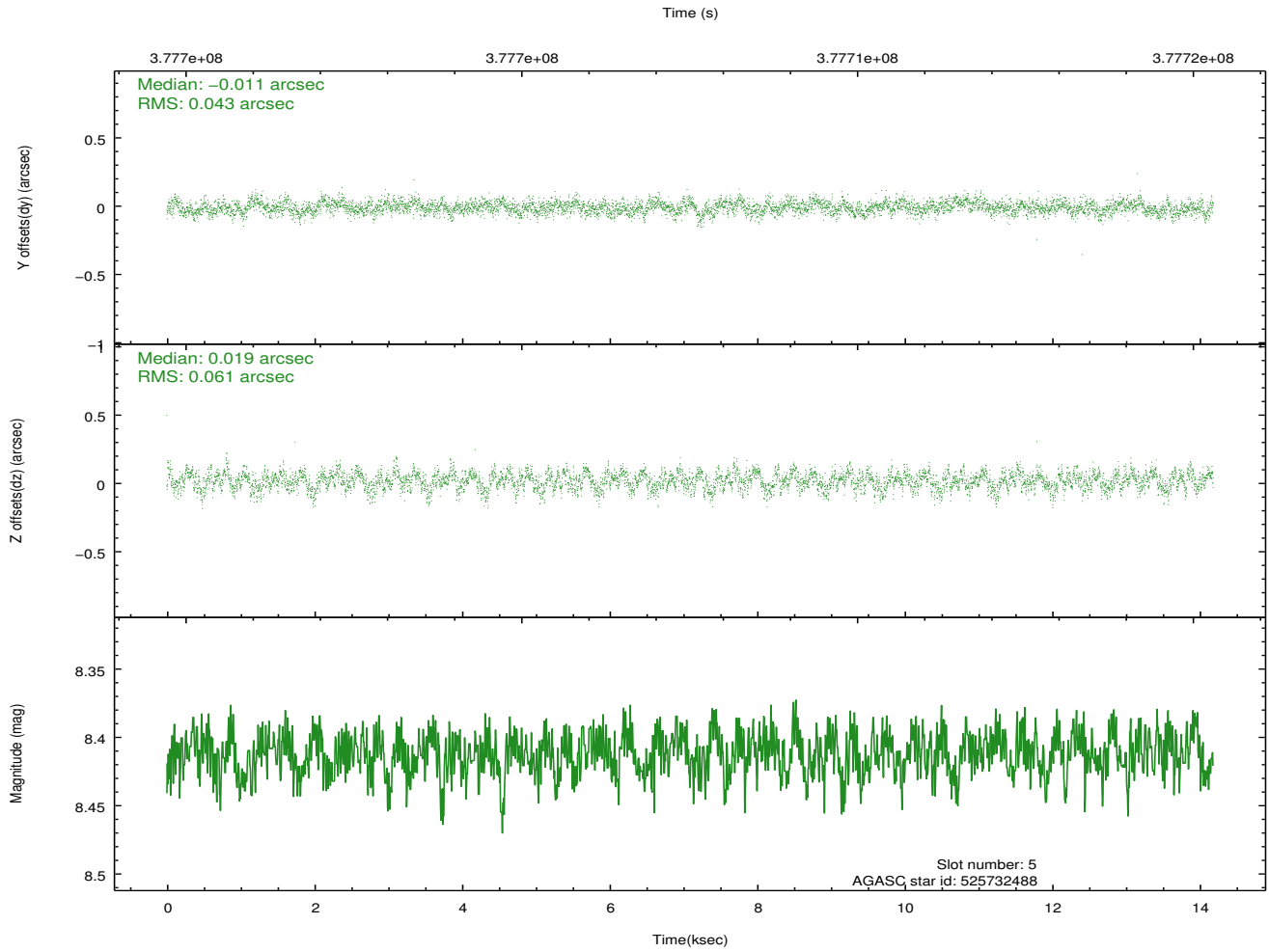
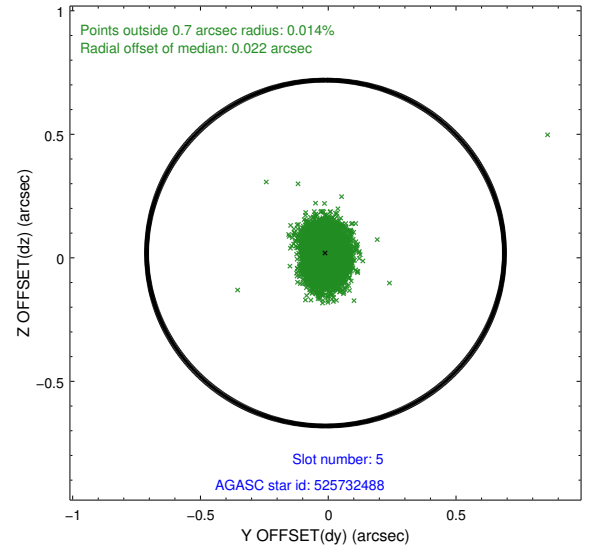
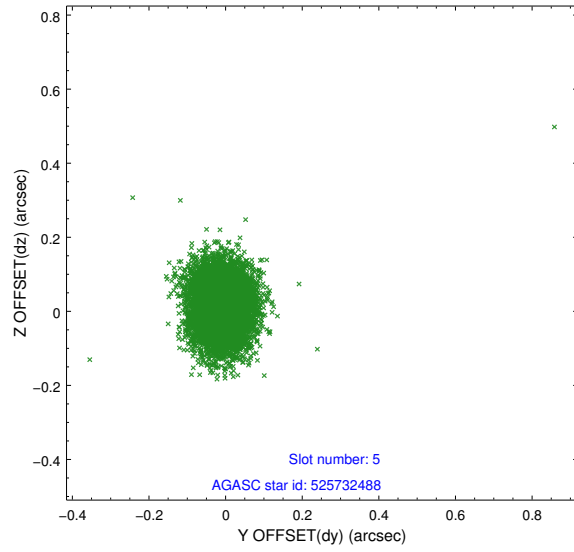
2.4.1 Slot 3



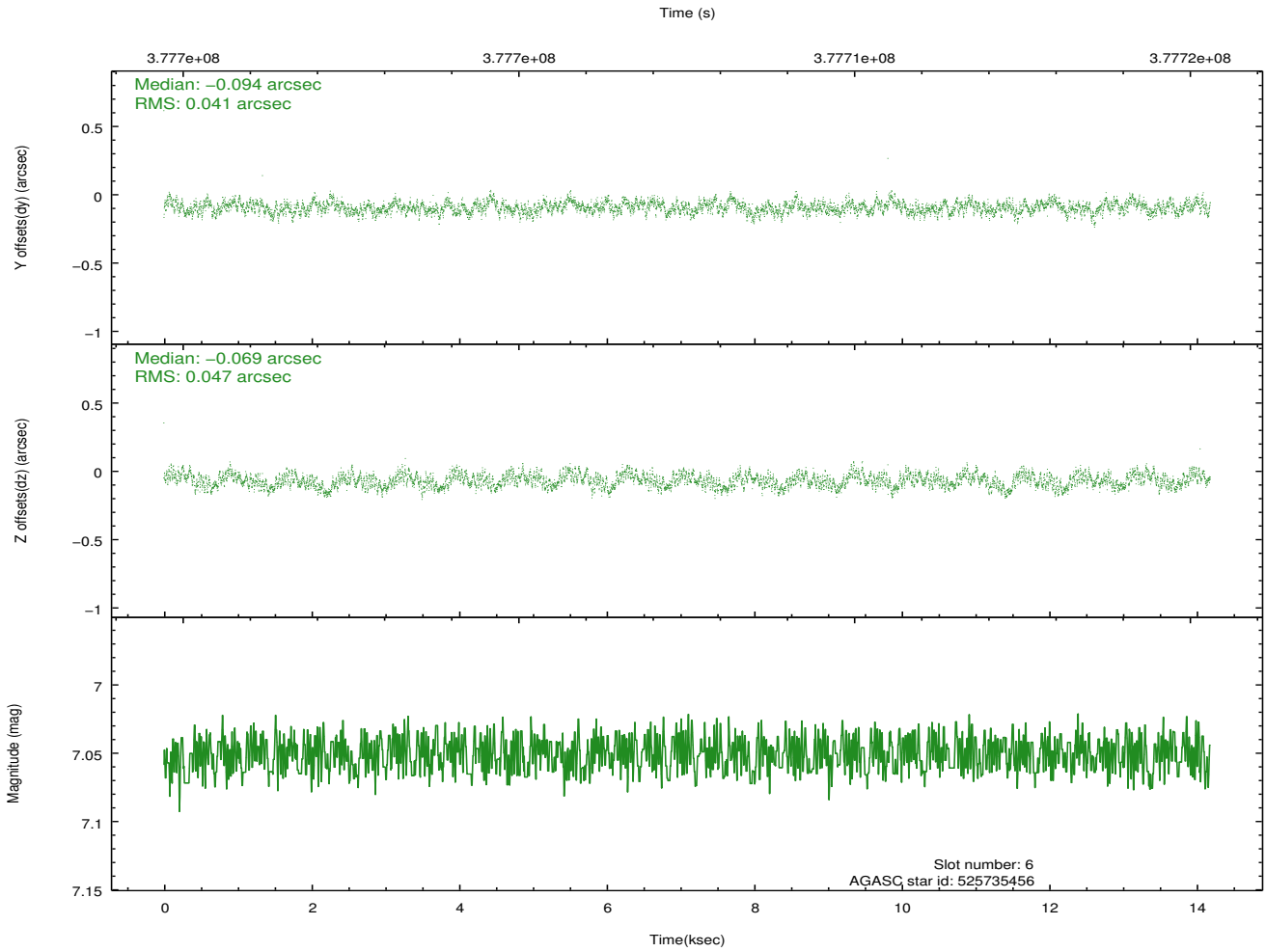
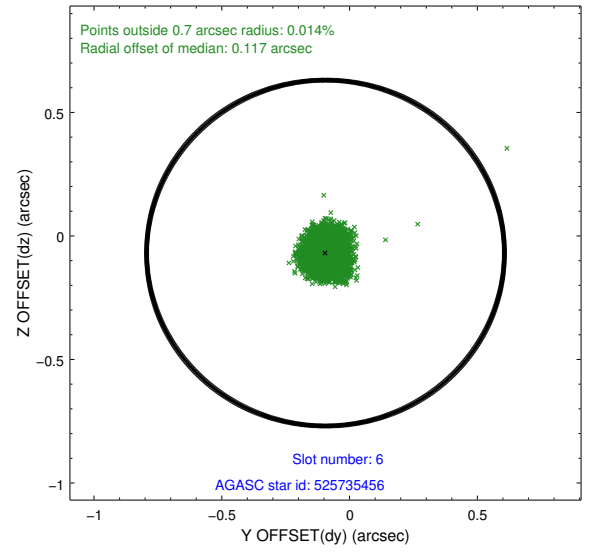
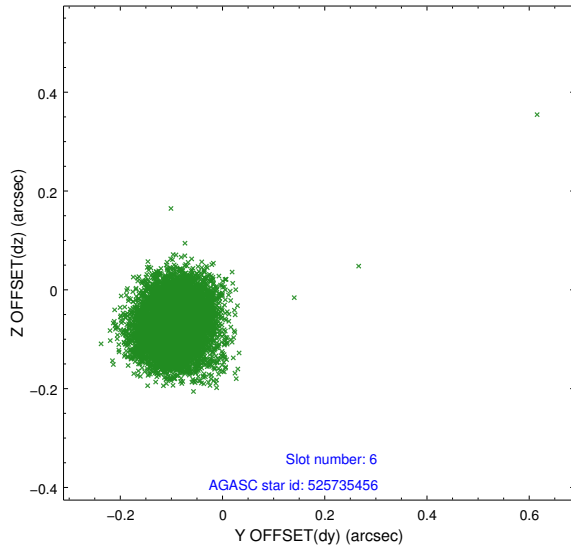
2.4.2 Slot 4



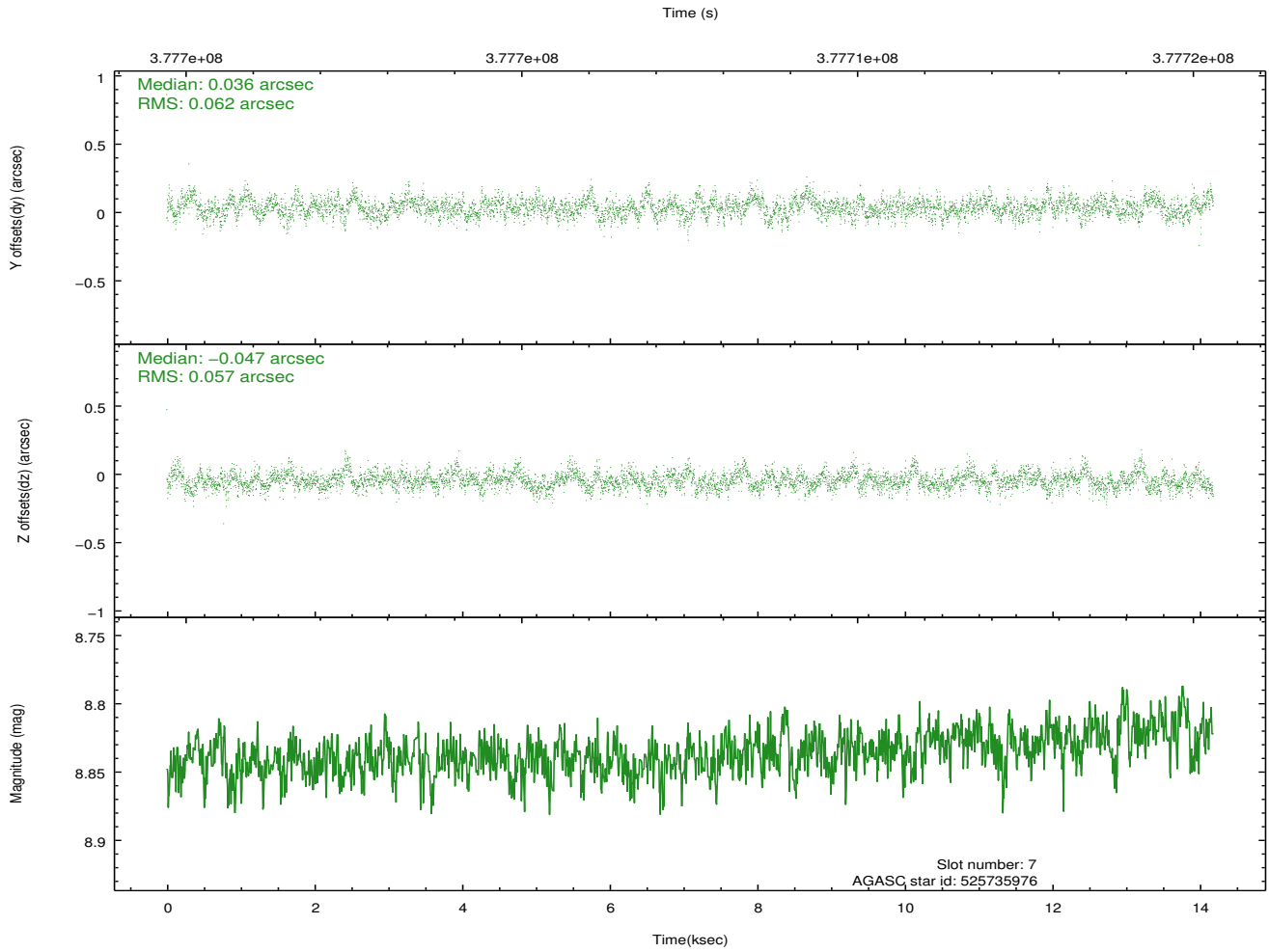
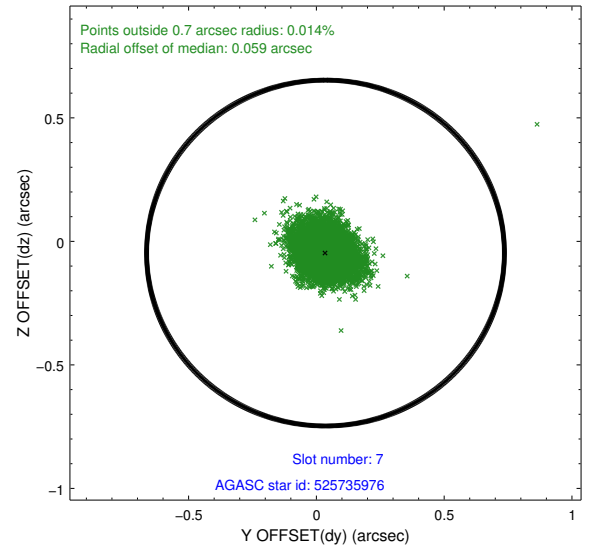
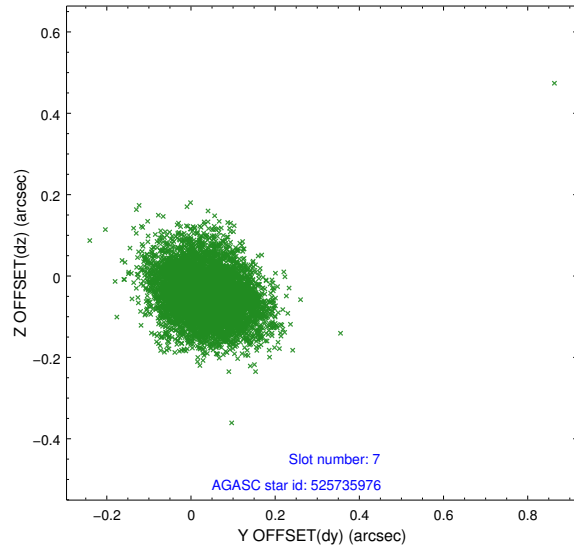
2.4.3 Slot 5



2.4.4 Slot 6

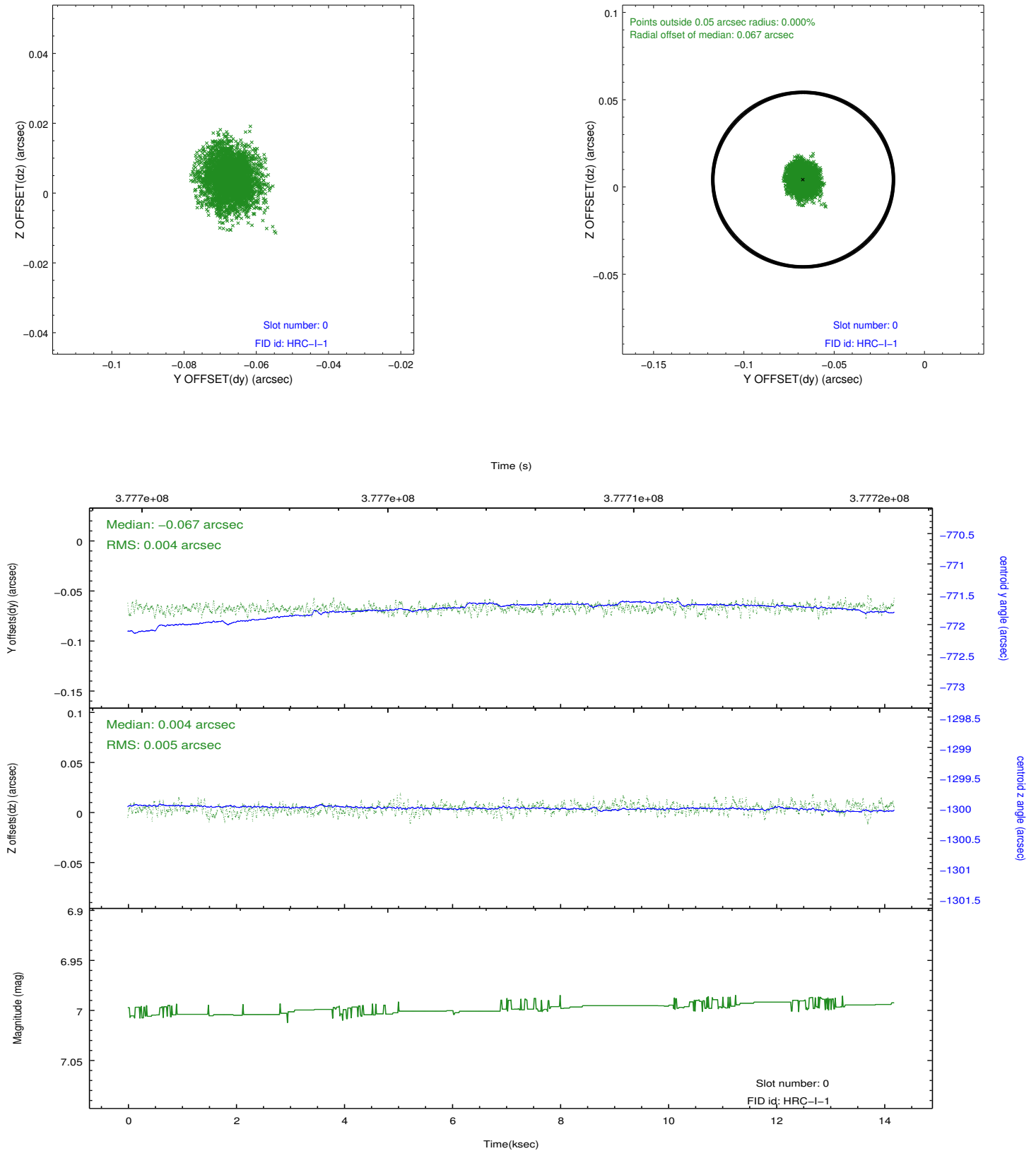


2.4.5 Slot 7

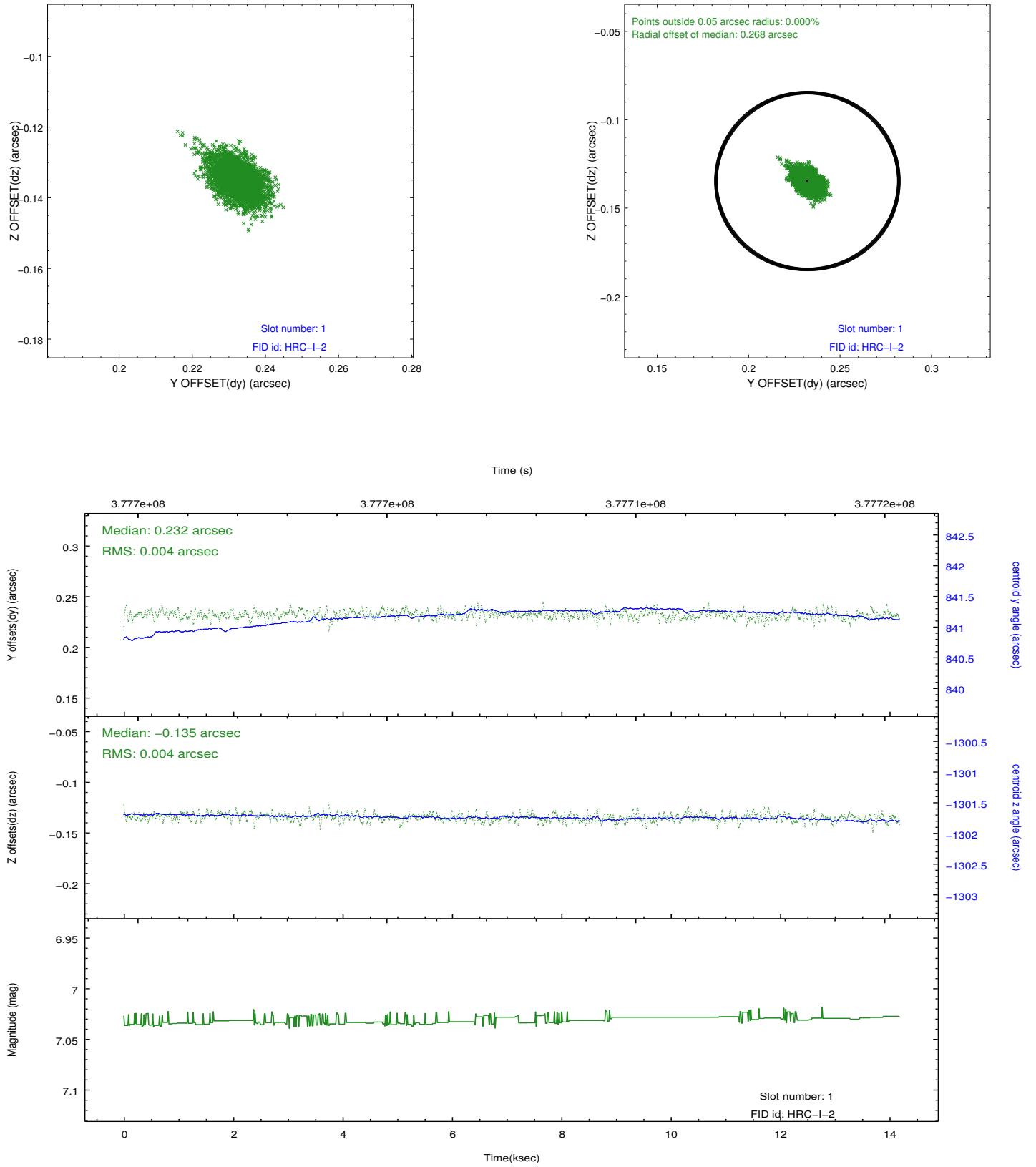


2.5 FID Slots

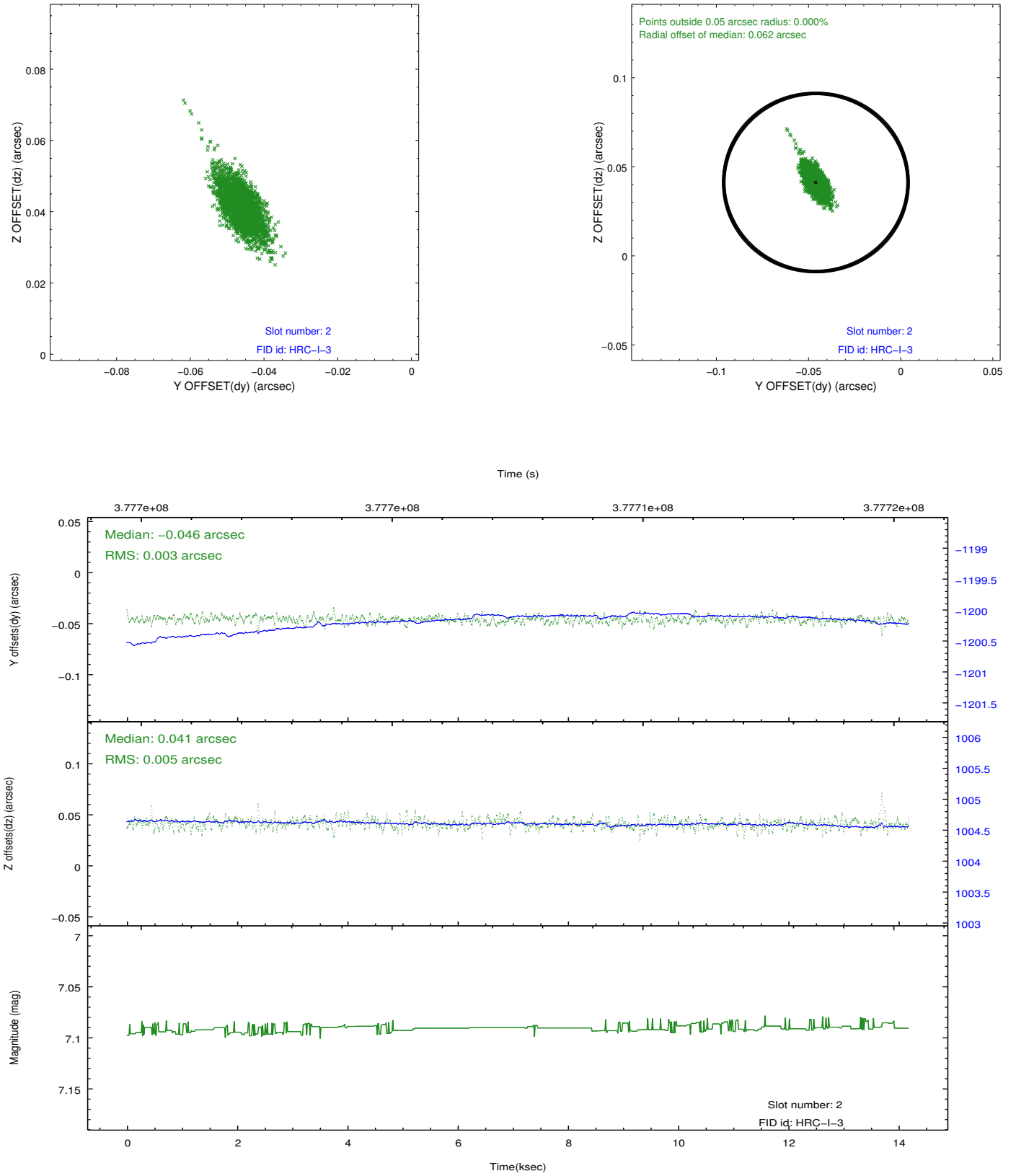
2.5.1 Slot 0



2.5.2 Slot 1



2.5.3 Slot 2



A Summary

A.1 Status

V&V Scientist	Jen Lauer
V&V Date (YYYY-MM-DD)	2012.08.22
V&V Edition	1
V&V Disposition and Status	OK
V&V Charge Time	14.18523196739

A.2 Comments

Roll constraint met.