

V&V Reference Report

L2 ASCDS Version : 8.4.5

Observation 10960 - L2 Version 2
Chandra X-Ray Center

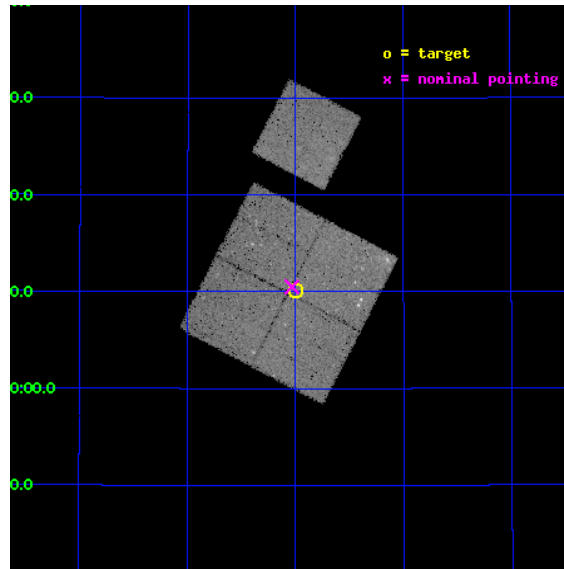
L2 Processing Date : Jun 21 2012

Contents

1	Front	2
2	OBI	3
2.1	OBI	3
2.1.1	Images	3
2.1.2	Bias	3
2.1.3	Parameters	4
2.1.4	Events	4
2.2	Compared Parameters	5
2.3	Aspect	6
2.4	Star Slots	9
2.4.1	Slot 3	9
2.4.2	Slot 4	10
2.4.3	Slot 5	11
2.4.4	Slot 6	12
2.4.5	Slot 7	13
2.5	FID Slots	14
2.5.1	Slot 0	14
2.5.2	Slot 1	15
2.5.3	Slot 2	16
A	Summary	17
A.1	Status	17
A.2	Comments	17

1 Front

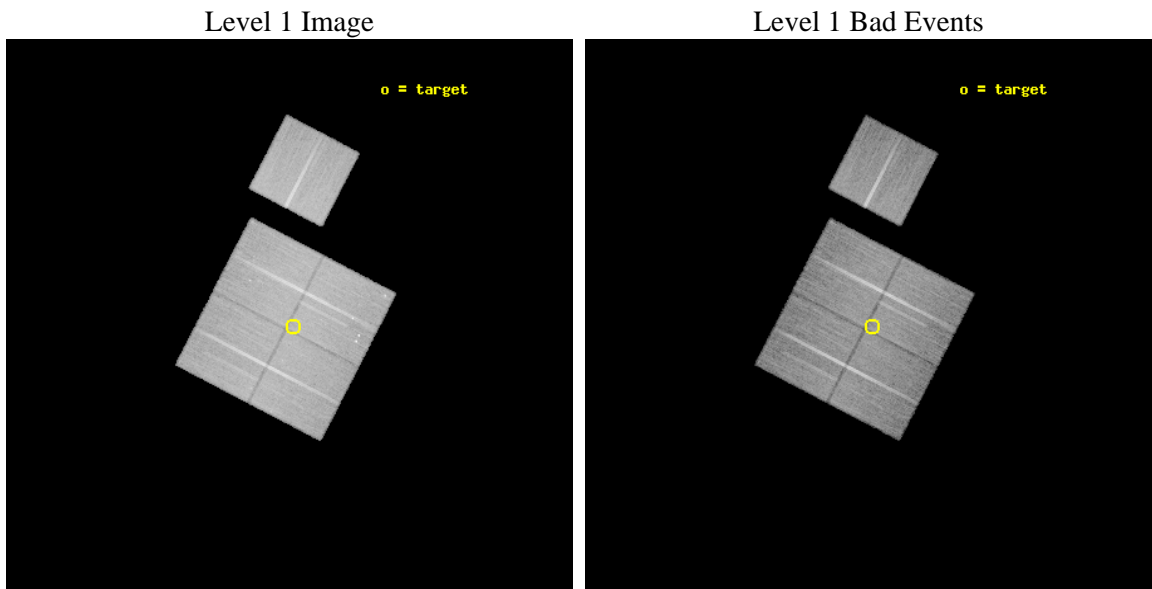
seq_num	200592	Sequence number
obs_id	10960	Observation id
title	The Chandra Cygnus OB2 Survey	Proposal title
observer	Dr. Jeremy Drake	Principal investigator
object	Cygnus OB2	Source name
dtcycle	0	
cycle	P	events from which exps? Prim/Second/Both
ra_targ	308.500666	Observer's specified target RA [deg]
dec_targ	41.16959	Observer's specified target Dec [deg]
ra_nom	308.50832427057	Nominal RA [deg]
dec_nom	41.175276530349	Nominal Dec [deg]
roll_nom	27.403628252561	Nominal Roll [deg]
revision	2	Processing version of data
ontime	28653.25924021	Sum of GTIs [s]
livetime	28278.883314014	Livetime [s]
ontime0	28656.400220394	Sum of GTIs [s]
ontime1	28653.259250045	Sum of GTIs [s]
ontime2	28653.259250045	Sum of GTIs [s]
ontime3	28653.25924021	Sum of GTIs [s]
ontime6	28650.118269861	Sum of GTIs [s]
l2events	115480	Number of level 2 events



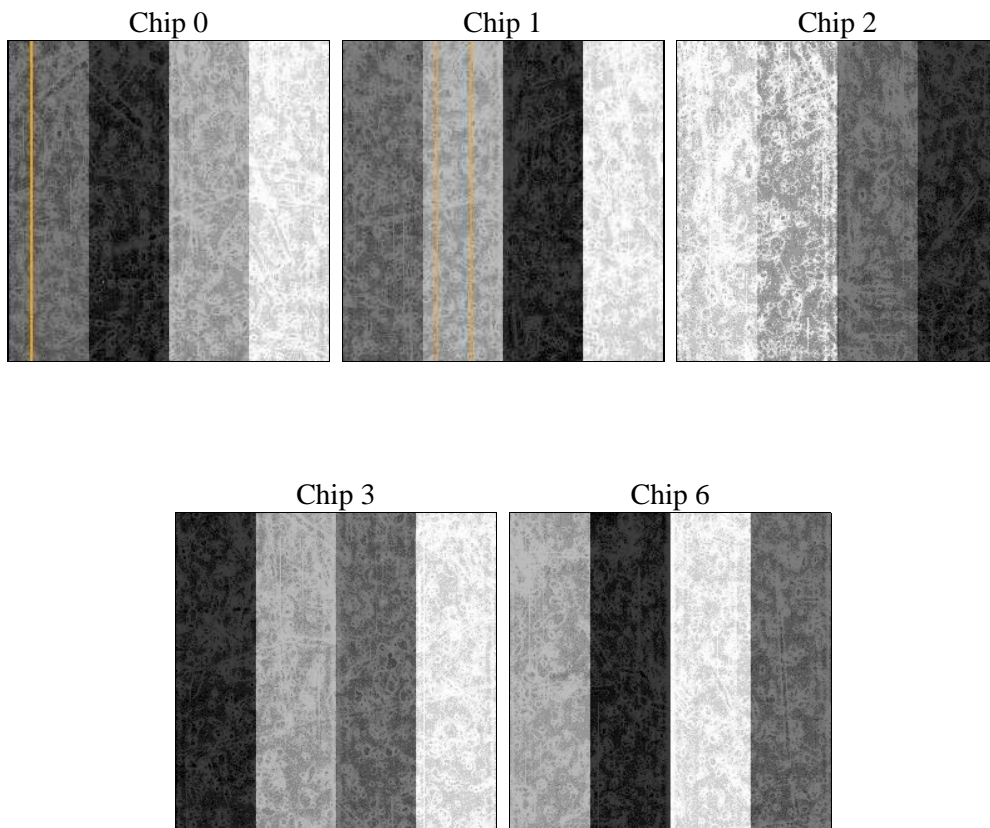
2 OBI

2.1 OBI

2.1.1 Images



2.1.2 Bias



2.1.3 Parameters

obi_num	1	Obi number	sched_exp_time	28500.000000	[s] Scheduled observation exposure time
ascdsver	8.4.5	Processing system revision	ontime	28653.25924021	Sum of GTIs [s]
caldsver	4.4.10	 	ontime0	28656.400220394	Sum of GTIs [s]
date	2012-06-21T15:26:44	Date and time of file creation	ontime1	28653.259250045	Sum of GTIs [s]
revision	2	Processing version of data	ontime2	28653.259250045	Sum of GTIs [s]
			ontime3	28653.25924021	Sum of GTIs [s]
			ontime6	28650.118269861	Sum of GTIs [s]
			l1events	1097818	Number of level 1 events

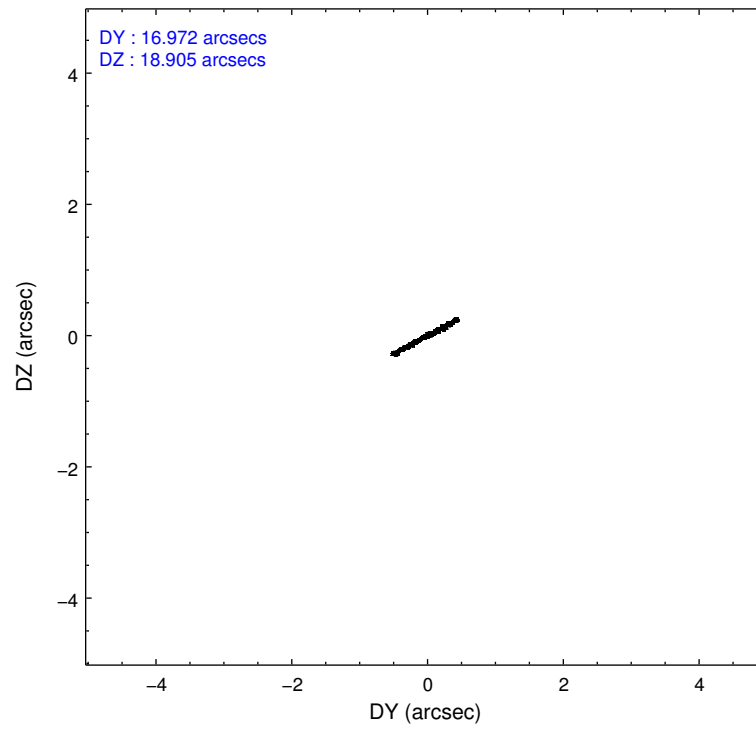
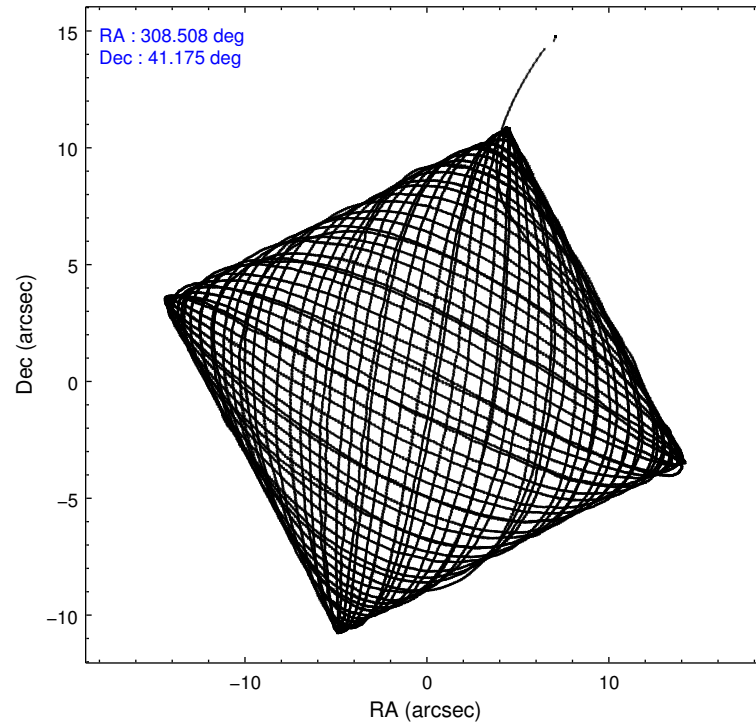
2.1.4 Events

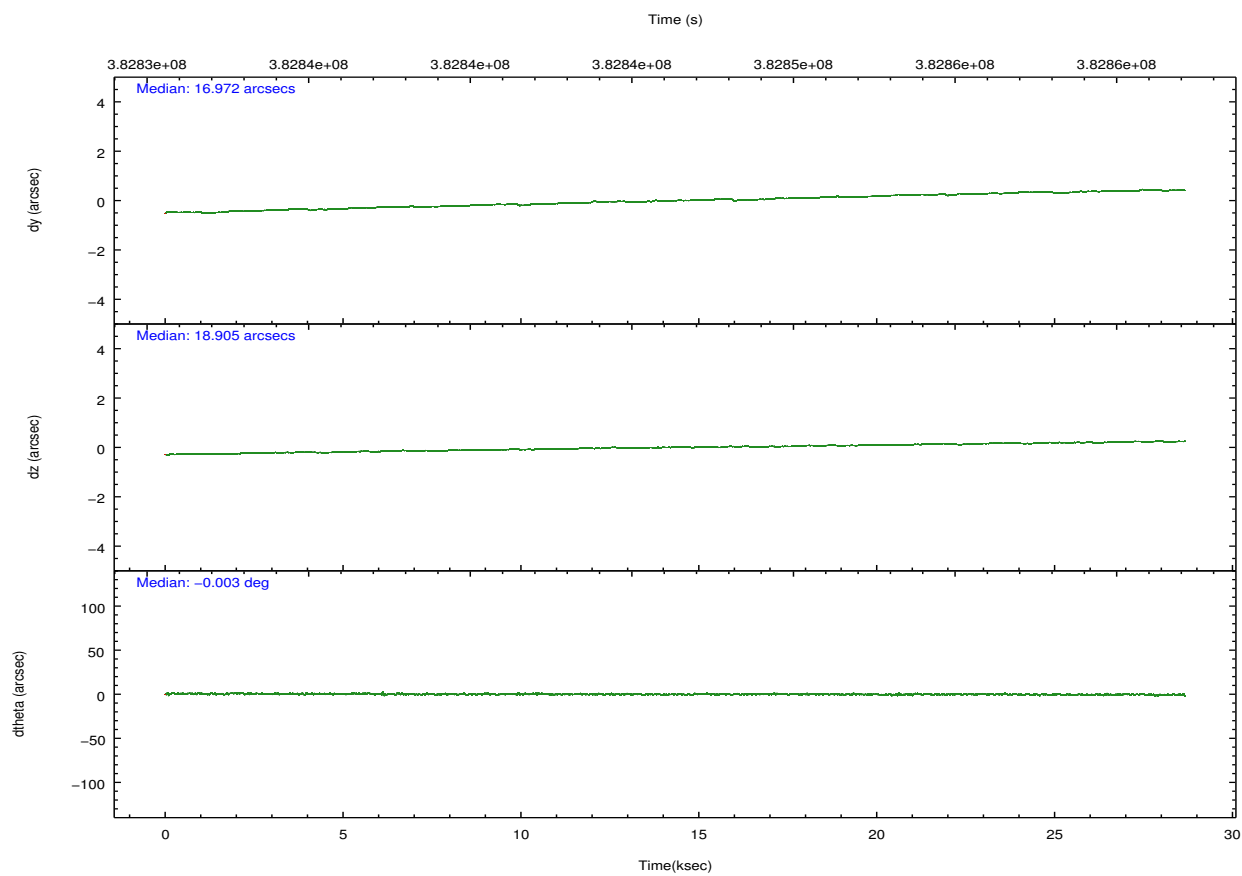
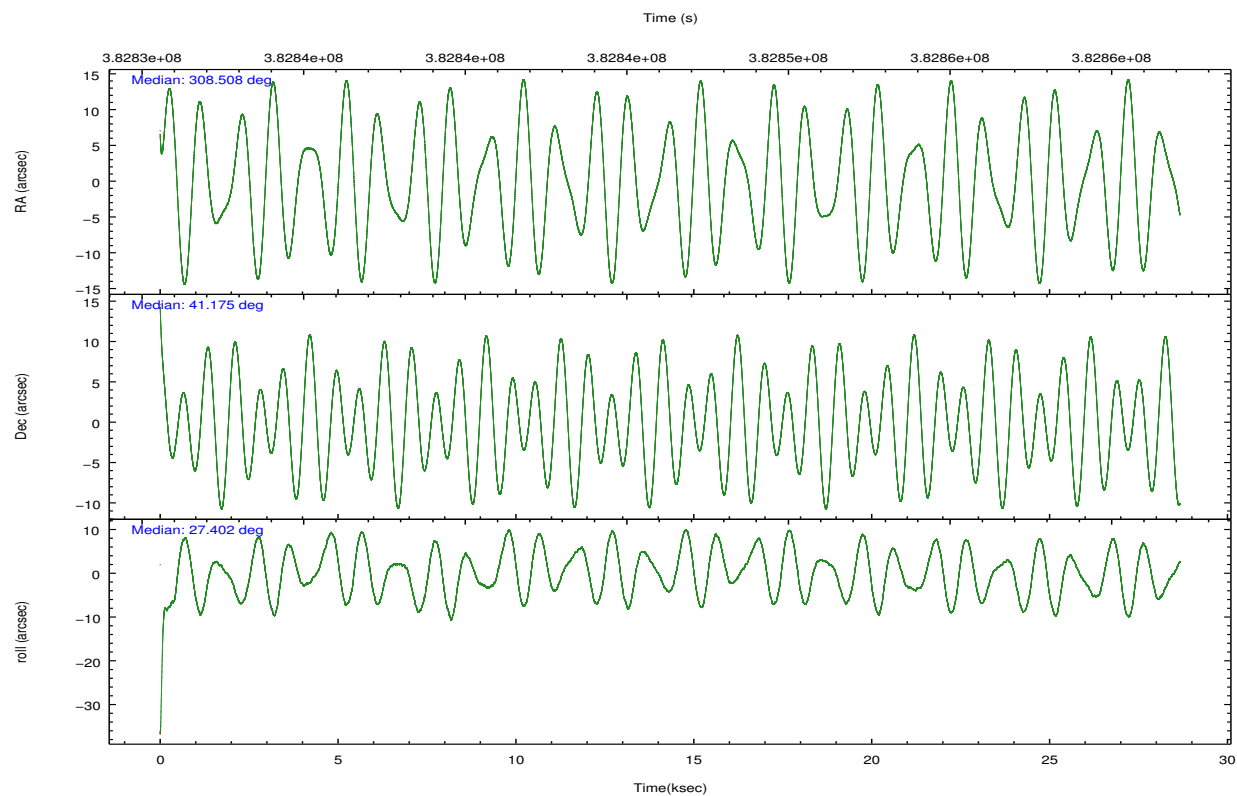
	ccd 0	ccd 1	ccd 2	ccd 3	ccd 6		ccd 0	ccd 1	ccd 2	ccd 3	ccd 6
level 1 events	206111	209205	227874	230010	224618	grade 0 events	10407	12263	11302	16224	11040
rejected events	181372	180996	201454	198250	198497		5%	5%	4%	7%	4%
rejected %	87%	86%	88%	86%	88%	grade 1 events	223	224	140	192	131
							0%	0%	0%	0%	0%
						grade 2 events	6035	6297	6023	5989	5548
							2%	3%	2%	2%	2%
						grade 3 events	2592	2973	2597	2748	2558
							1%	1%	1%	1%	1%
						grade 4 events	2441	2890	2569	2625	2519
							1%	1%	1%	1%	1%
						grade 5 events	7111	7881	6598	8274	7725
							3%	3%	2%	3%	3%
						grade 6 events	4474	5094	4266	4574	4823
							2%	2%	1%	1%	2%
						grade 7 events	172828	171583	194379	189384	190274
							83%	82%	85%	82%	84%

2.2 Compared Parameters

Parameter	Planned	Actual	Parameter	Planned	Actual
Instrument	ACIS	ACIS	Obspar format version number	7	7
Detector	ACIS-01236	ACIS-01236	Obspar file type	PREDICTED	ACTUAL
Grating	NONE	NONE	Obspar update status	NONE	UPDATED
Data mode	VFAINT	VFAINT	CCD I0 on	Y	Y
Observation mode	POINTING	POINTING	CCD I1 on	Y	Y
[deg] Pointing RA	308.488749	308.5083242705736	CCD I2 on	Y	Y
[deg] Pointing Dec	41.152046	41.1752765303487	CCD I3 on	Y	Y
[deg] Pointing Roll	27.207841	27.40362825256094	CCD S0 on	N	N
[mm] SIM focus pos	-0.782348	-0.7809083437167272	CCD S1 on	N	N
[mm] SIM defocus	0	0.001439871863259334	CCD S2 on	O1	Y
[mm] SIM translation stage pos	-233.592463	-233.5874344608287	CCD S3 on	N	N
[mm] SIM translation stage offset	0	-0.005018542100998502	CCD S4 on	N	N
[s] Observation start time (MET)	382832163.184000	382831008.35879	CCD S5 on	N	N
Observation start date	2010-02-17T22:14:57	2010-02-17T21:56:48	Number of optional ACIS chips dropped	0	0
[s] Observation end time (MET)	382860663.184000	382861549.26034	On-chip summing requested	N	N
Observation end date	2010-02-18T06:09:57	2010-02-18T06:25:49	Subarray requested	NONE	NONE
Read mode	TIMED	TIMED	Alternating exposures requested	N	N
			[s] Primary exposure time	0.000000	3.1

2.3 Aspect



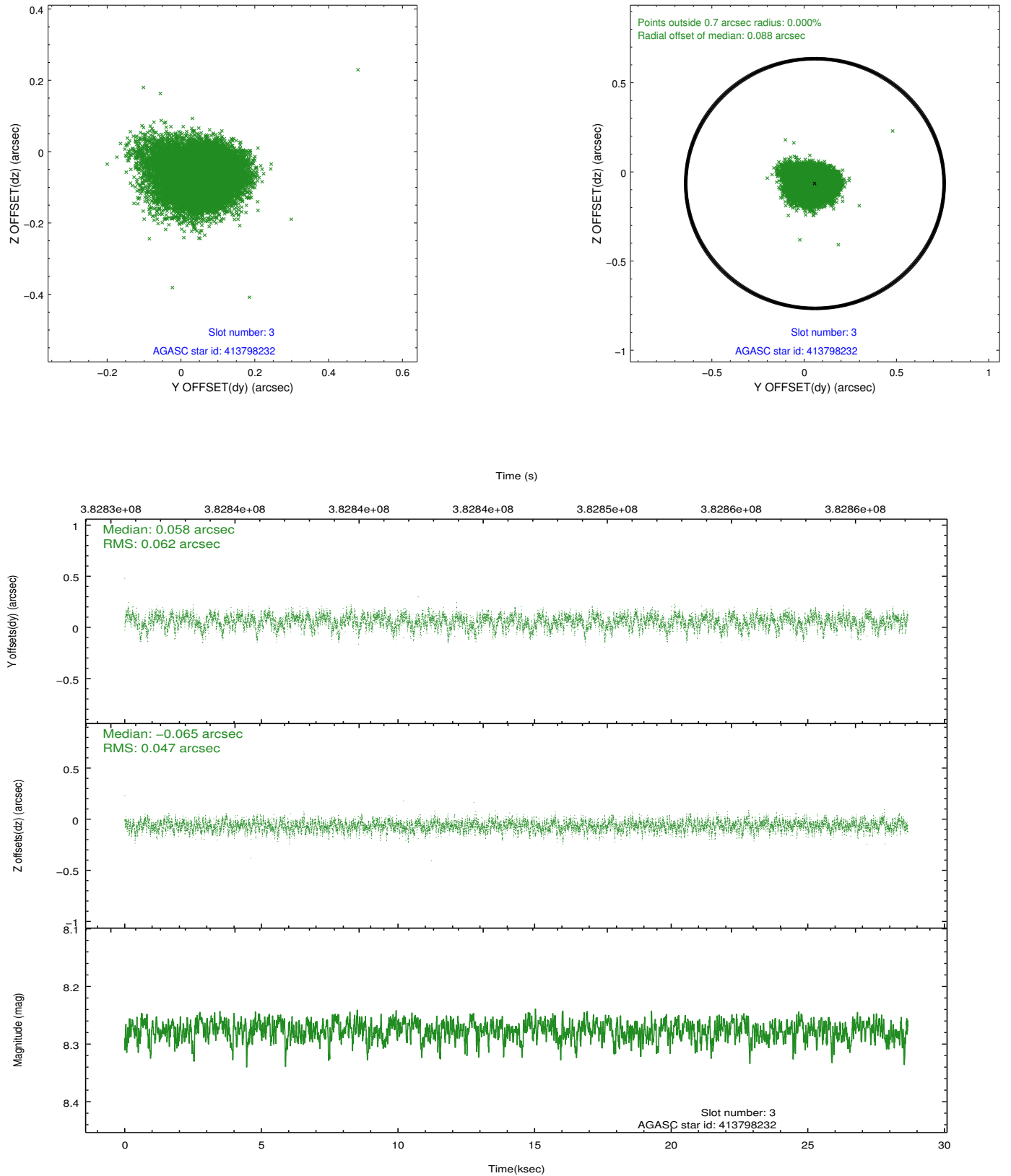


Slot Statistics

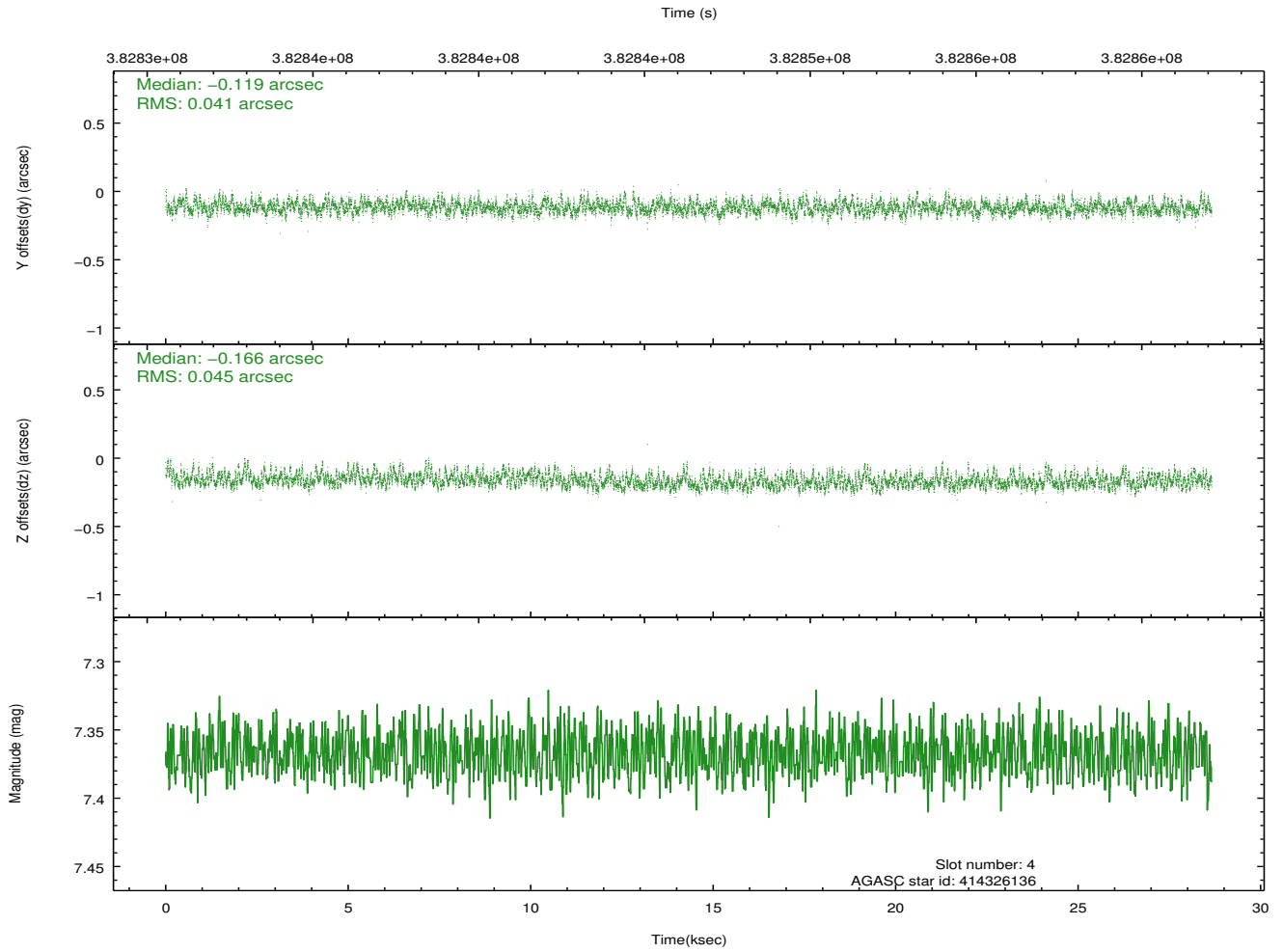
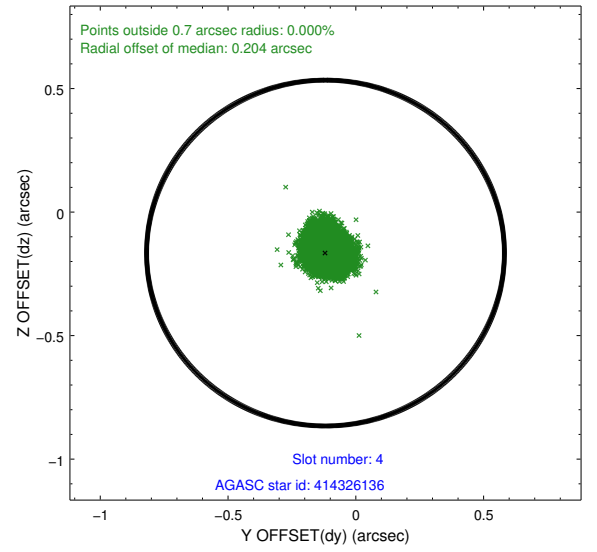
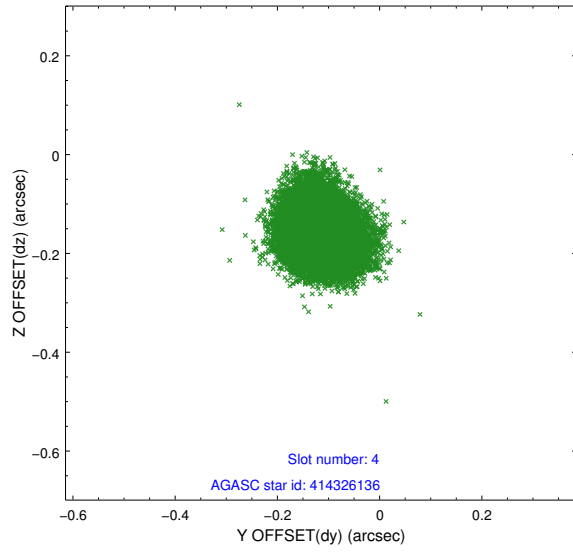
slot	status	id	mag	n_pts	med_dy	med_dz	dr1	dr2	ra	dec	mean_y	mean_z
0	FID	ACIS-I-1	7.00	6992	-0.036	0.010	0.010	0.016	0.000000	0.000000	922.42	-842.58
1	FID	ACIS-I-4	6.94	6992	0.176	0.034	0.013	0.021	0.000000	0.000000	2142.70	1057.23
2	FID	ACIS-I-5	6.99	6991	-0.238	0.027	0.013	0.023	0.000000	0.000000	-1825.70	1055.12
3	GUIDE	413798232	8.28	13973	0.058	-0.065	0.081	0.137	309.116117	41.044272	1340.50	-1118.41
4	GUIDE	414326136	7.37	13980	-0.119	-0.166	0.065	0.104	308.256176	41.473642	-27.68	1317.44
5	GUIDE	413802872	9.32	13973	-0.046	0.075	0.116	0.181	308.231239	40.487807	-1719.00	-1802.71
6	GUIDE	413803744	8.84	13965	0.084	0.159	0.073	0.119	308.586342	40.704904	-498.55	-1552.91
7	GUIDE	413798056	8.90	13970	0.025	0.000	0.094	0.157	309.494500	41.155486	2437.52	-1221.39

2.4 Star Slots

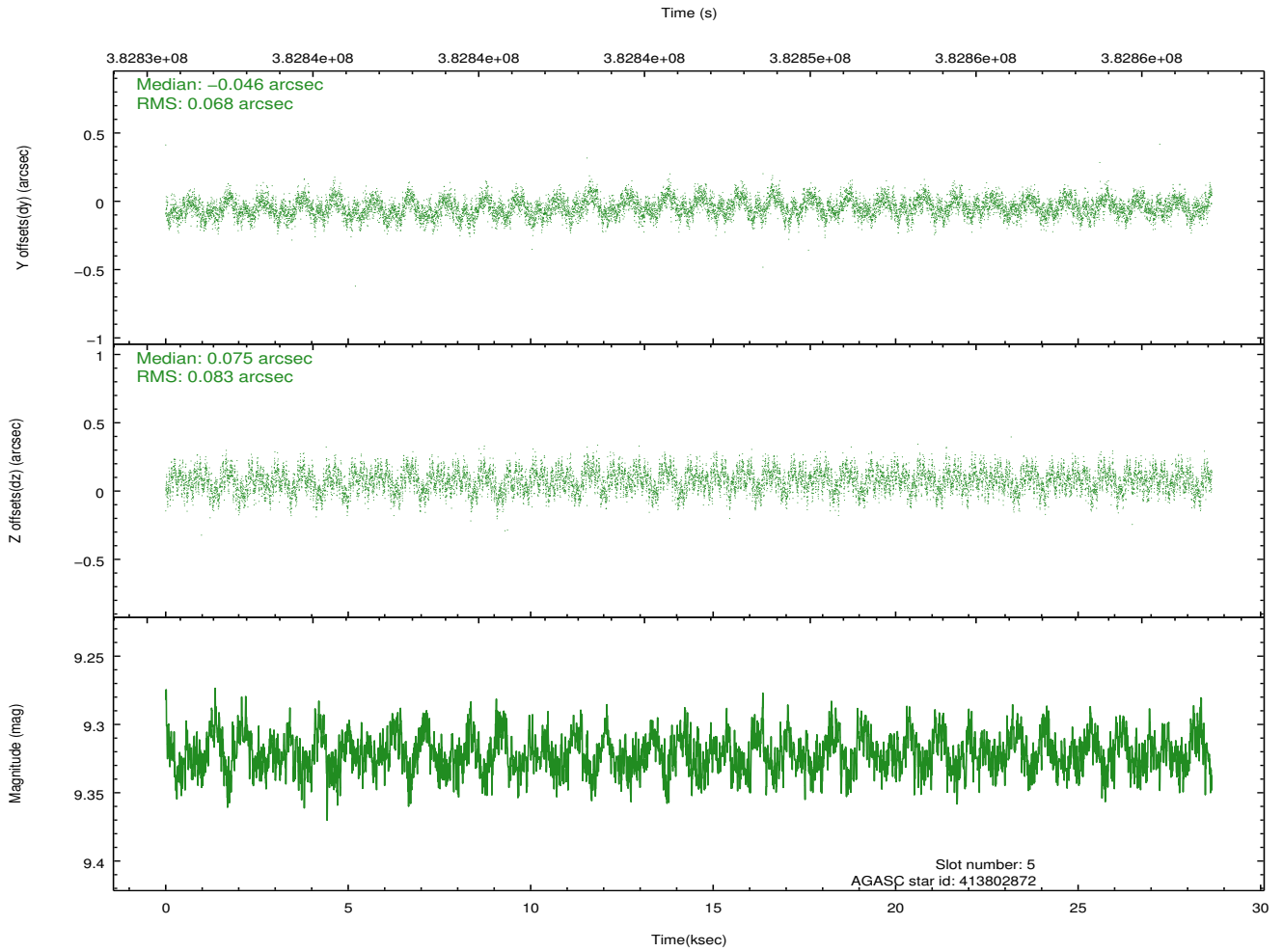
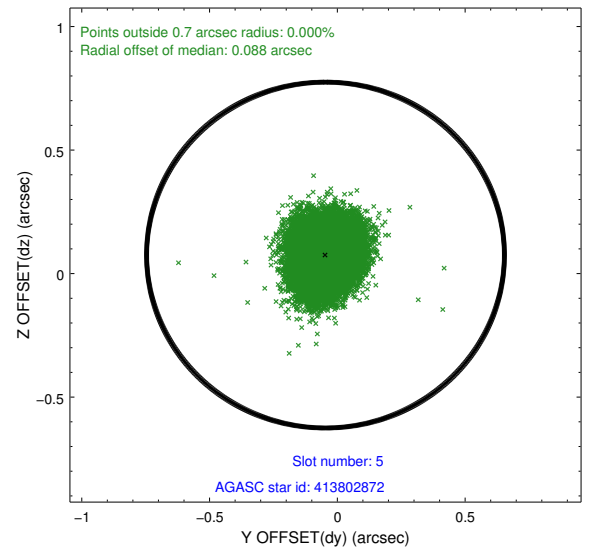
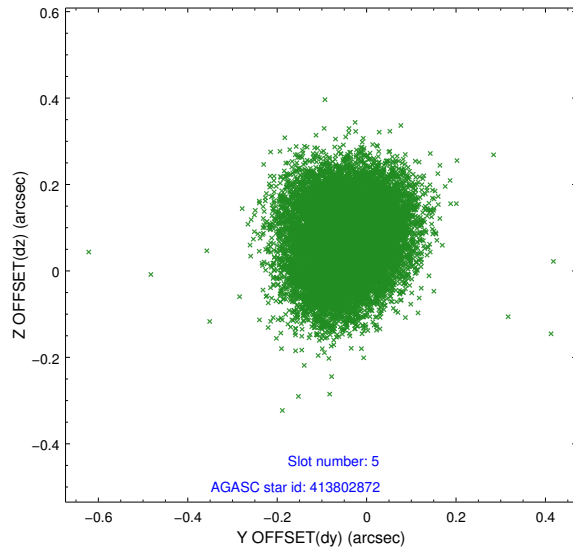
2.4.1 Slot 3



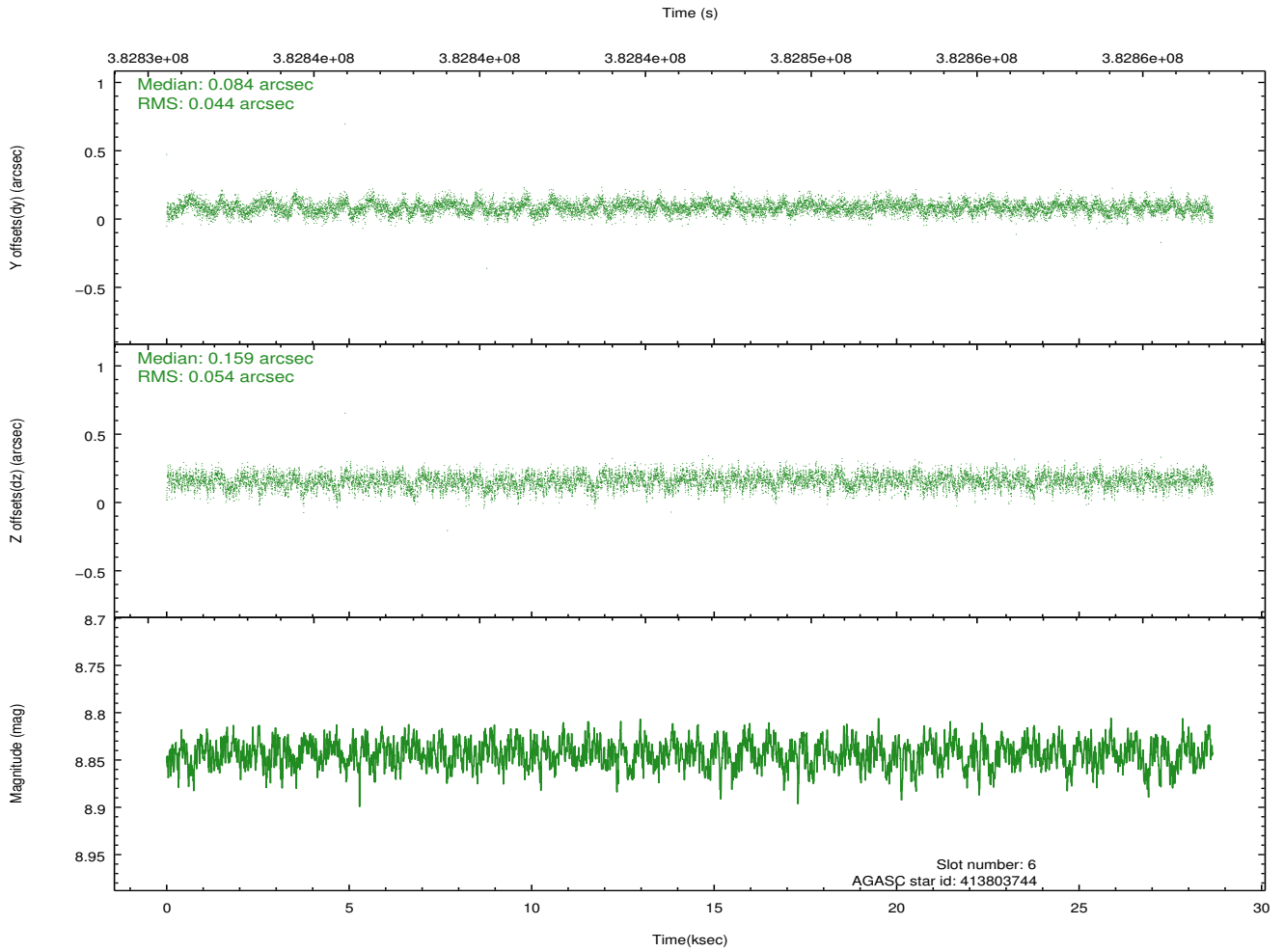
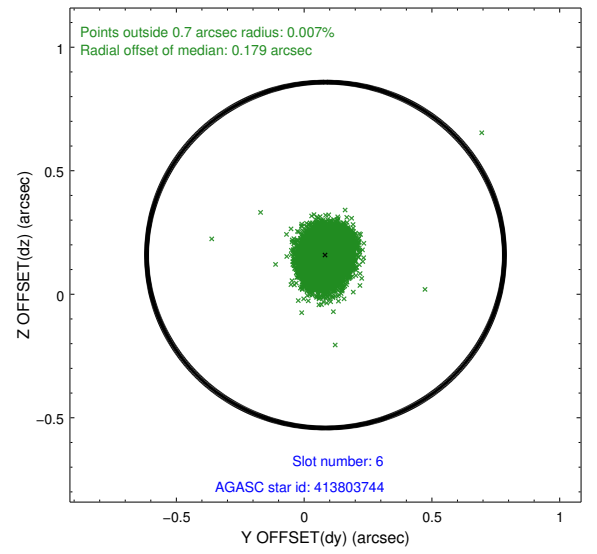
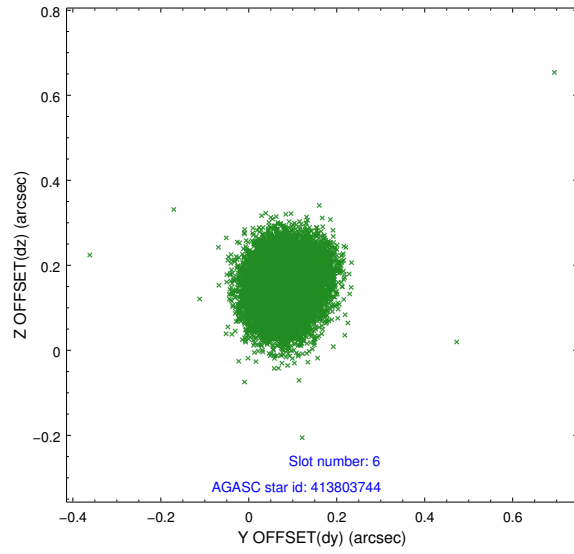
2.4.2 Slot 4



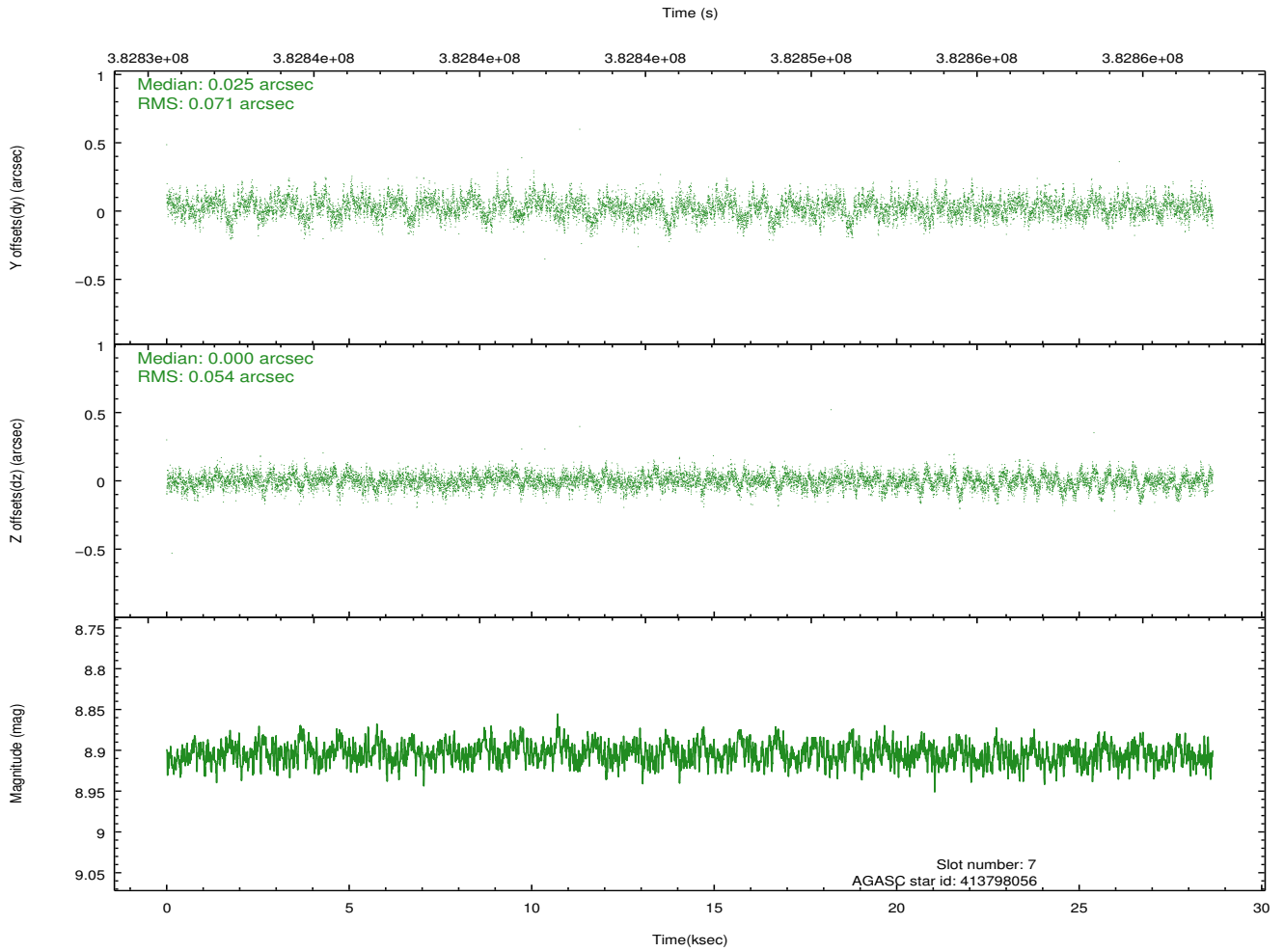
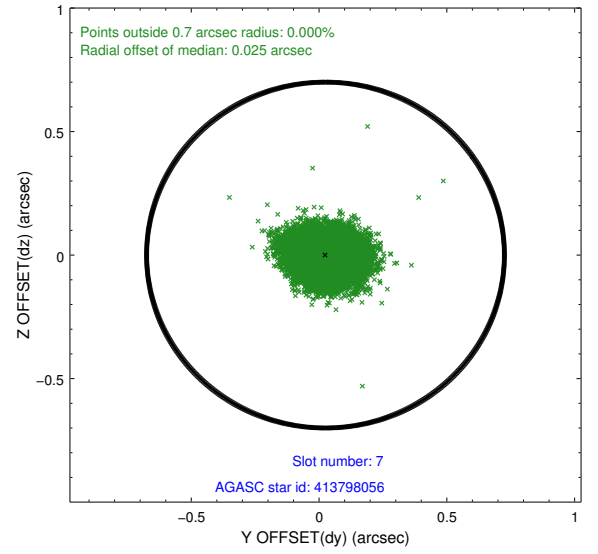
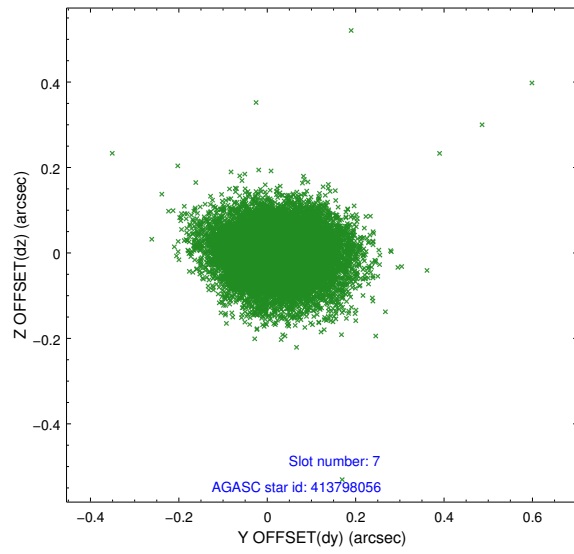
2.4.3 Slot 5



2.4.4 Slot 6

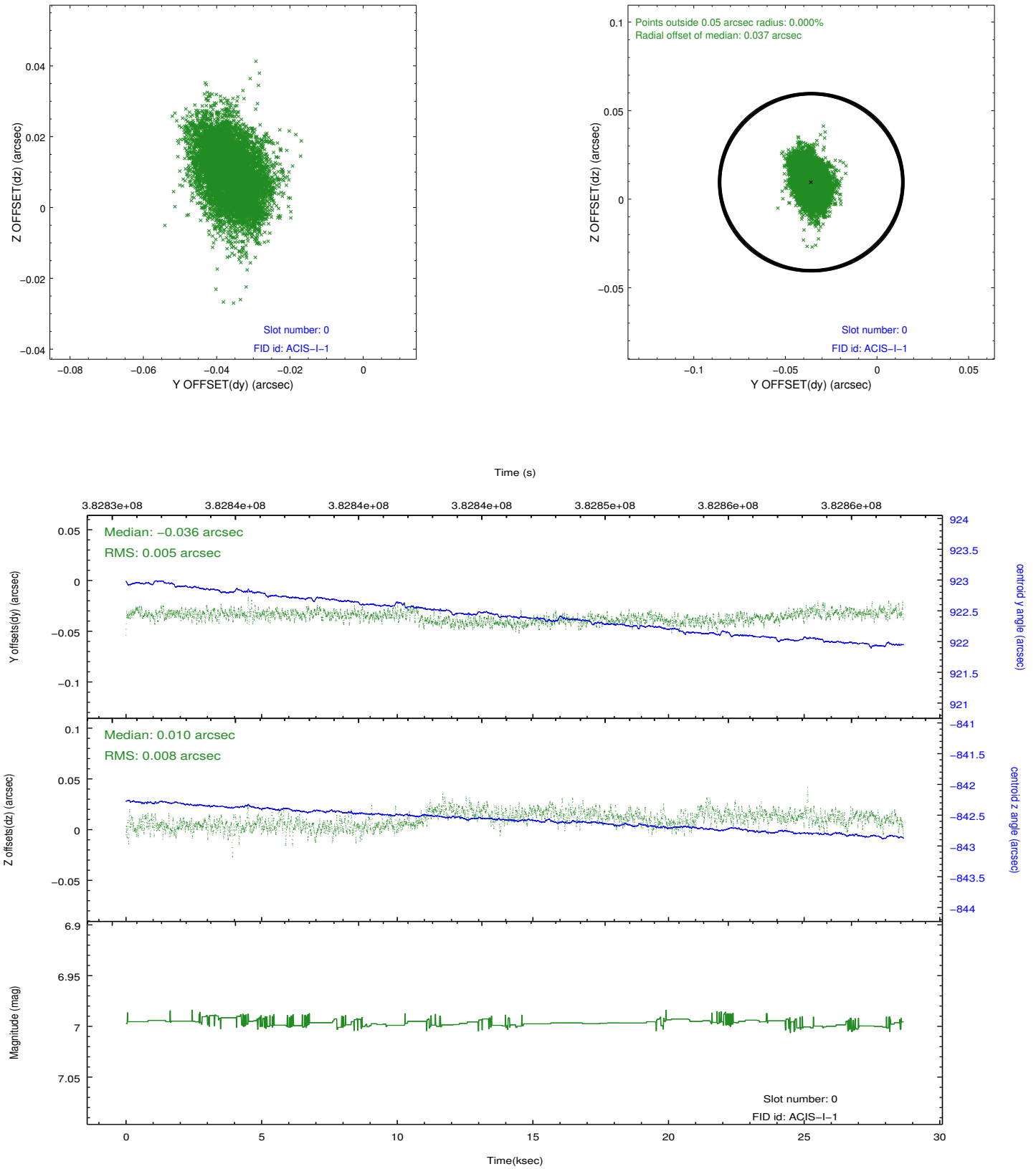


2.4.5 Slot 7

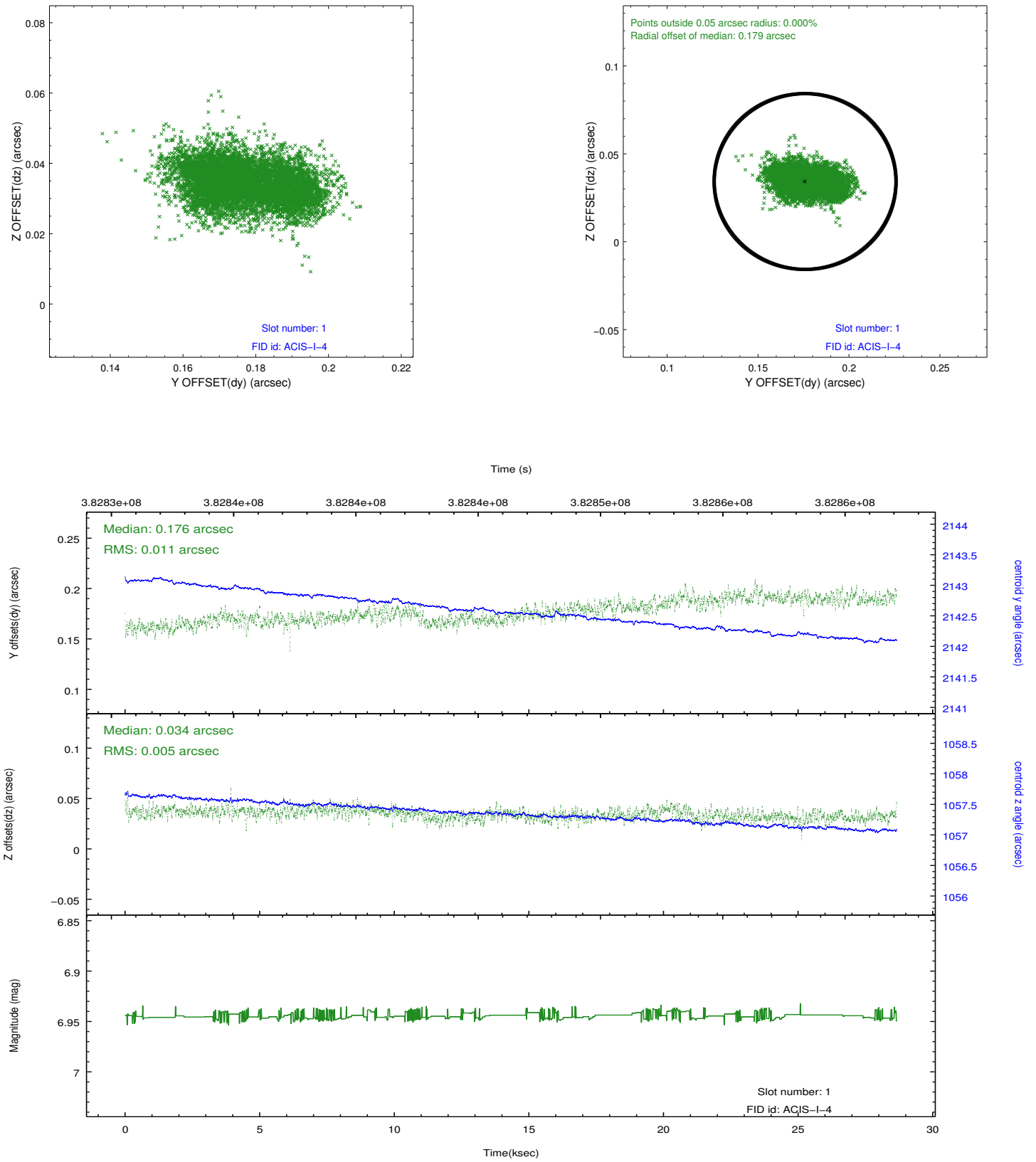


2.5 FID Slots

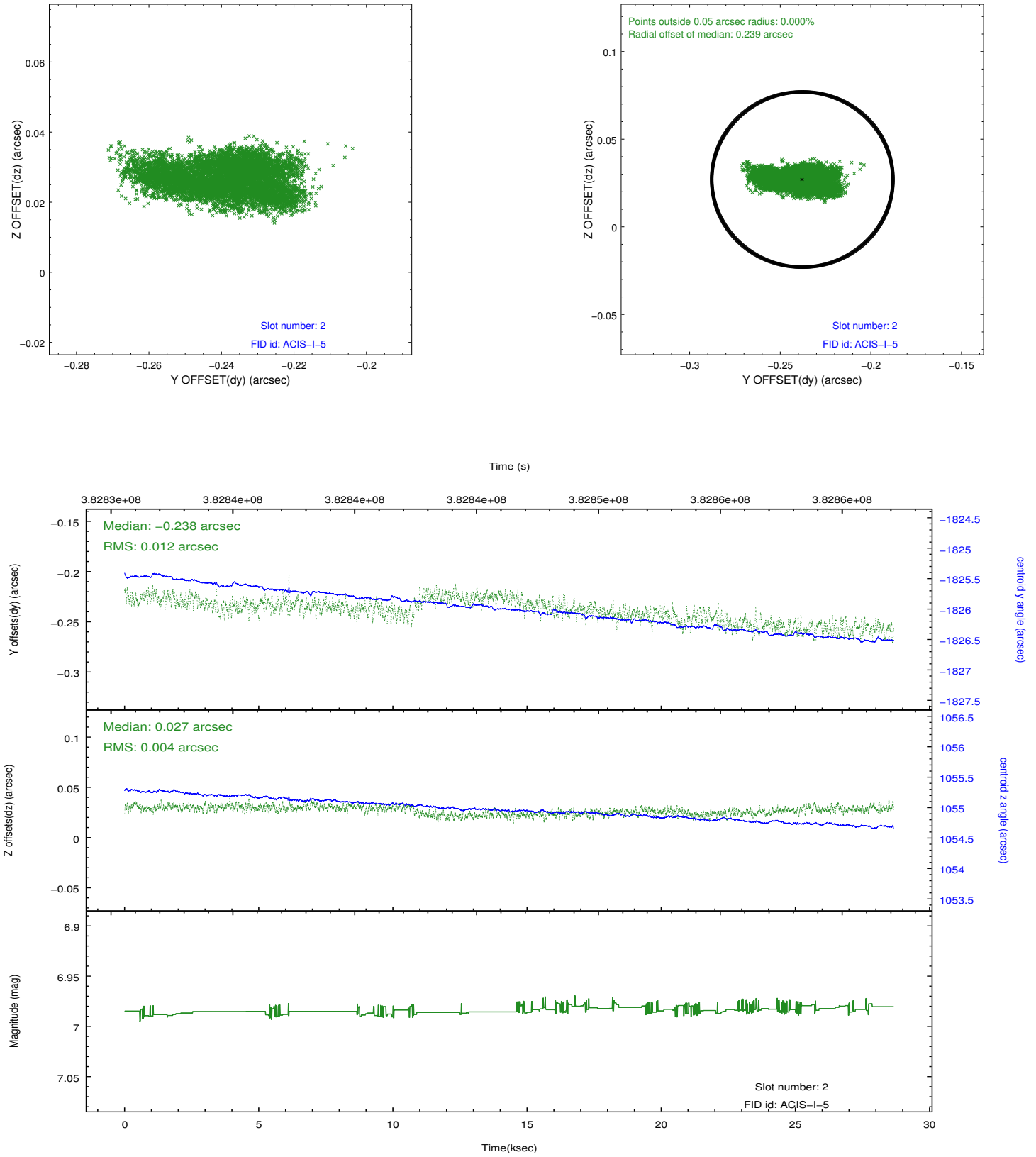
2.5.1 Slot 0



2.5.2 Slot 1



2.5.3 Slot 2



A Summary

A.1 Status

V&V Scientist	Beth Sundheim
V&V Date (YYYY-MM-DD)	2012.06.28
V&V Edition	1
V&V Disposition and Status	OK
V&V Charge Time	28.6532592

A.2 Comments