

V&V Reference Report

L2 ASCDS Version : 8.4.5

Observation 10920 - L2 Version 3
Chandra X-Ray Center

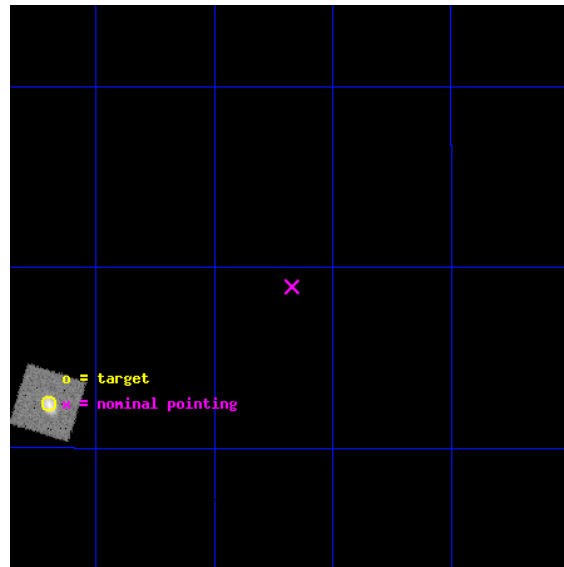
L2 Processing Date : Aug 13 2012

Contents

1	Front	2
2	OBI	3
2.1	OBI	3
2.1.1	Images	3
2.1.2	Parameters	4
2.1.3	Events	4
2.2	Compared Parameters	5
2.3	Aspect	6
2.4	Star Slots	9
2.4.1	Slot 3	9
2.4.2	Slot 4	10
2.4.3	Slot 5	11
2.4.4	Slot 6	12
2.4.5	Slot 7	13
2.5	FID Slots	14
2.5.1	Slot 0	14
2.5.2	Slot 1	15
A	Summary	16
A.1	Status	16
A.2	Comments	16

1 Front

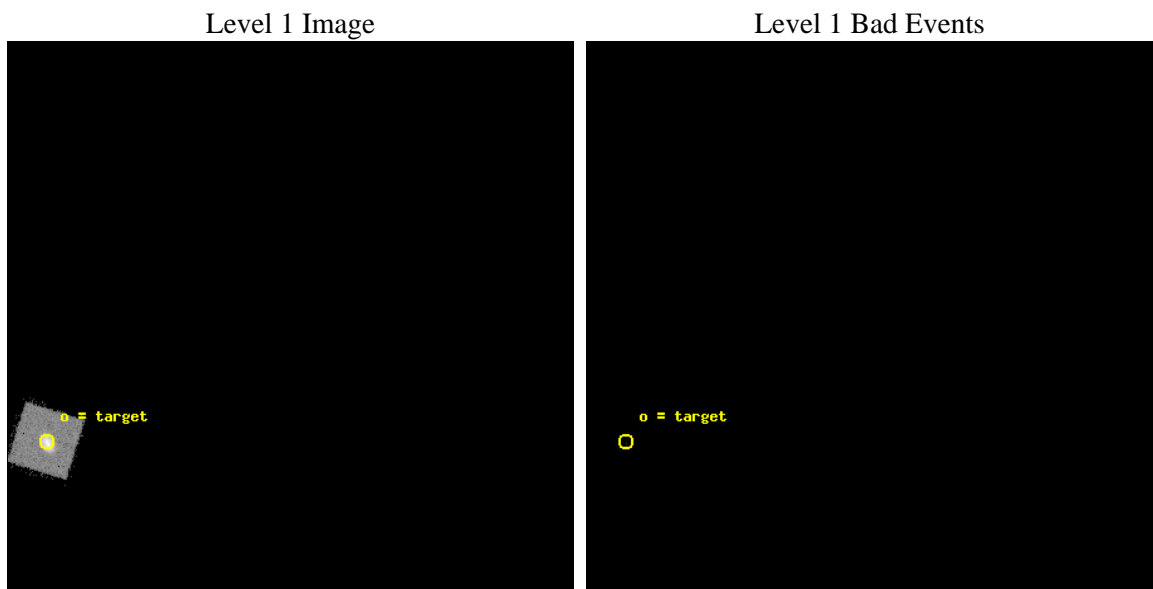
seq_num	990013	Sequence number
obs_id	10920	Observation id
title	AO-10 Calibration Observations of the ACIS charged particle background	Proposal title
observer	Dr. CXC Calibration	Principal investigator
object	31 Com	Source name
ra_targ	192.924583	Observer's specified target RA [deg]
dec_targ	27.540722	Observer's specified target Dec [deg]
ra_nom	192.66819515386	Nominal RA [deg]
dec_nom	27.649037969054	Nominal Dec [deg]
roll_nom	242.52326910378	Nominal Roll [deg]
revision	3	Processing version of data
ontime	13364.975669563	[s]
livetime	10803.480554575	Ontime multiplied by DTCOR
l2events	27192	Number of level 2 events



2 OBI

2.1 OBI

2.1.1 Images



2.1.2 Parameters

obi_num	0	Obi number	sched_exp_time	13300.000000	[s] Scheduled observation exposure time
ascdsver	8.4.5	Processing system revision	ontime	13397.775669575	[s]
caldbver	4.5.1.1	 	l1events	33316	Number of level 1 events
date	2012-08-13T07:26:27	Date and time of file creation			
revision	3	Processing version of data			

2.1.3 Events

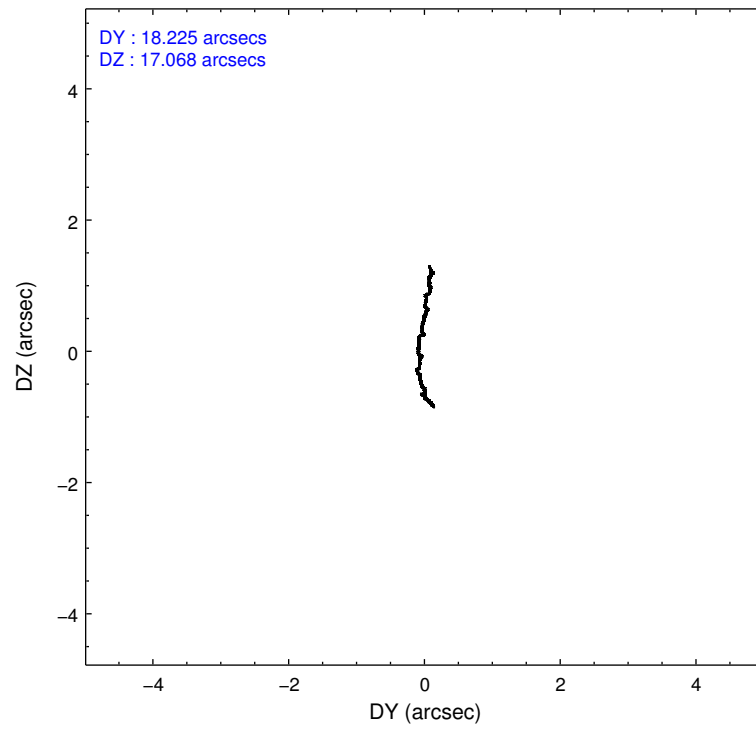
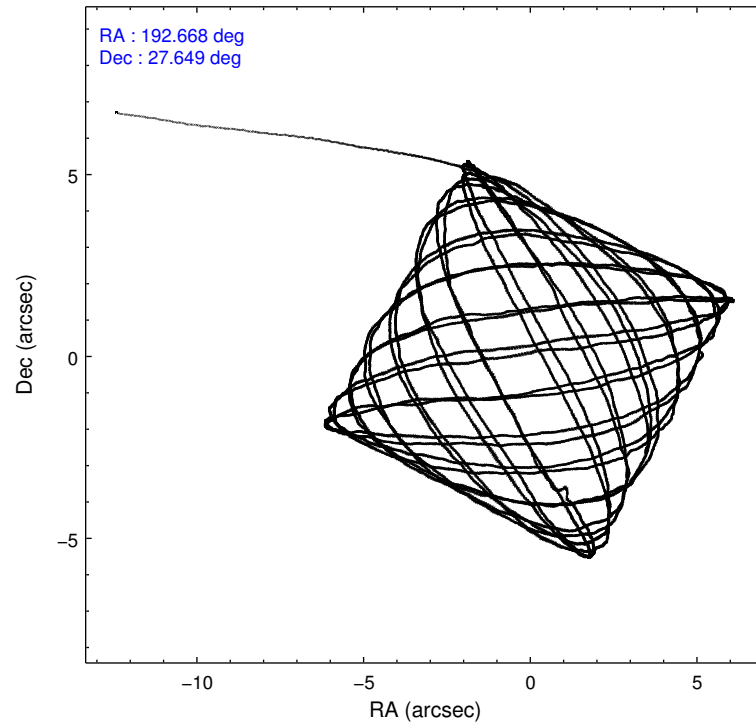
Level 1 Events

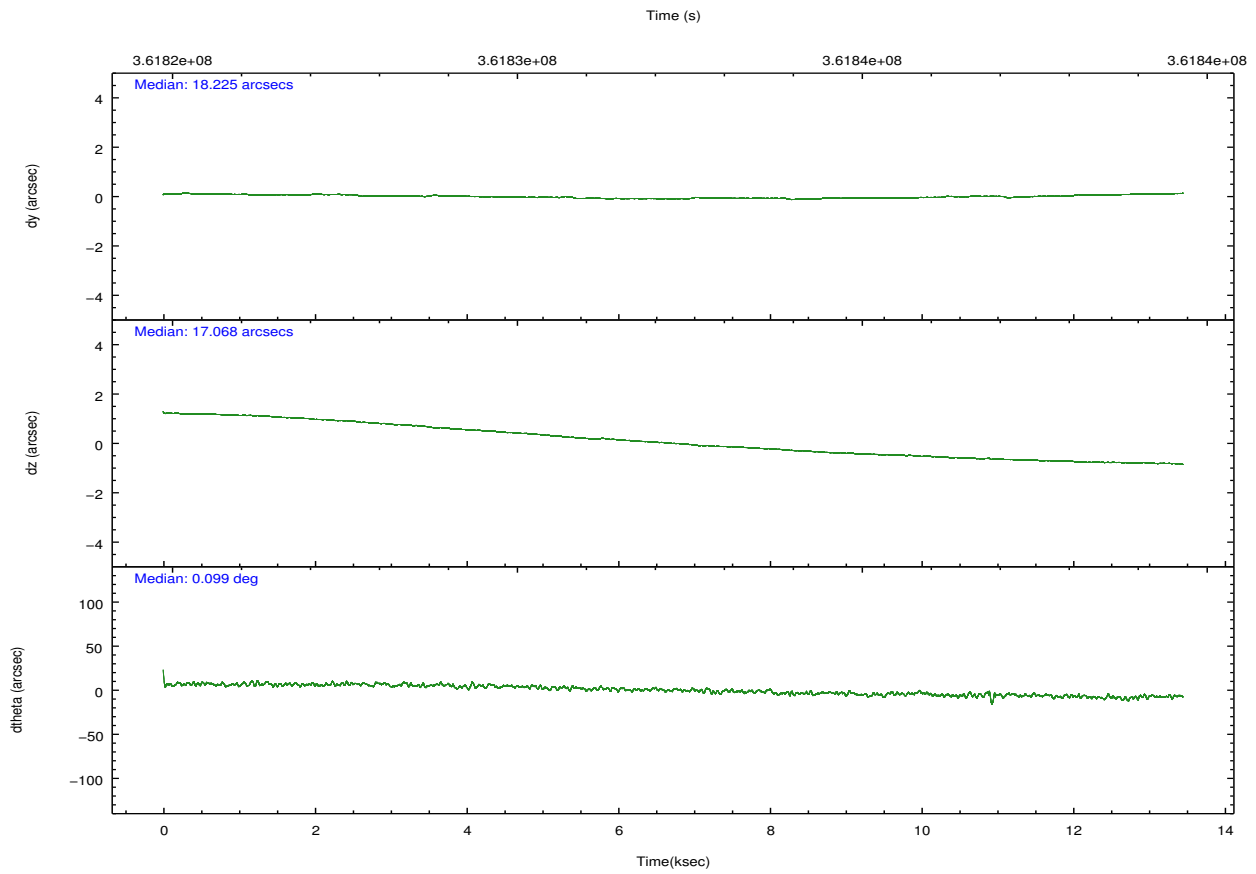
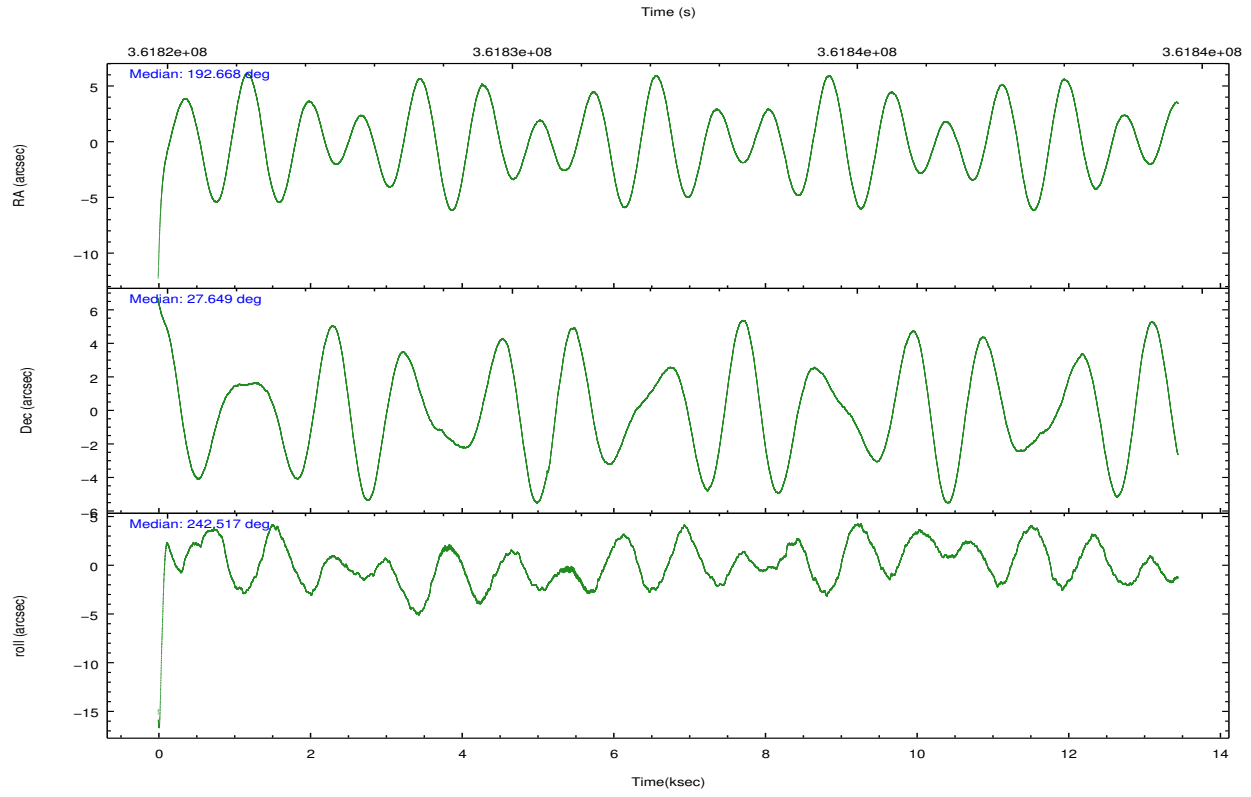
	segment 0
level 1 events	33316
rejected events	1289
rejected %	3%

2.2 Compared Parameters

Parameter	Planned	Actual	Parameter	Planned	Actual
Instrument	HRC	HRC	Obspar format version number	7	7
Detector	HRC-I	HRC-I	Obspar file type	PREDICTED	ACTUAL
Grating	NONE	NONE	Obspar update status	OVERRIDE	OVERRIDE
Data mode	NEXT_IN_LINE	NEXT_IN_LINE			
Observation mode	POINTING	POINTING			
[deg] Pointing RA	192.666132	192.668195153857			
[deg] Pointing Dec	27.676159	27.64903796905363			
[deg] Pointing Roll	242.619738	242.5232691037841			
[s] Window start time (MET)	357523266.184000	357523266.184000			
[s] Window stop time (MET)	365385666.184000	365385666.184000			
[mm] SIM focus pos	-1.038866356238299	-1.038866356238299			
[mm] SIM defocus	0.00142623211714632	0.00142623211714632			
[mm] SIM translation stage pos	51.9960404362608	51.9960404362608			
[mm] SIM translation stage offset	74.989453869027	74.989453869027			
[s] Observation start time (MET)	361824677.80174	361824677.80174			
Observation start date	2009-06-19T19:06:51	2009-06-19T18:51:17			
[s] Observation end time (MET)	361838977.57745	361838977.57745			
Observation end date	2009-06-19T22:48:31	2009-06-19T22:49:37			

2.3 Aspect



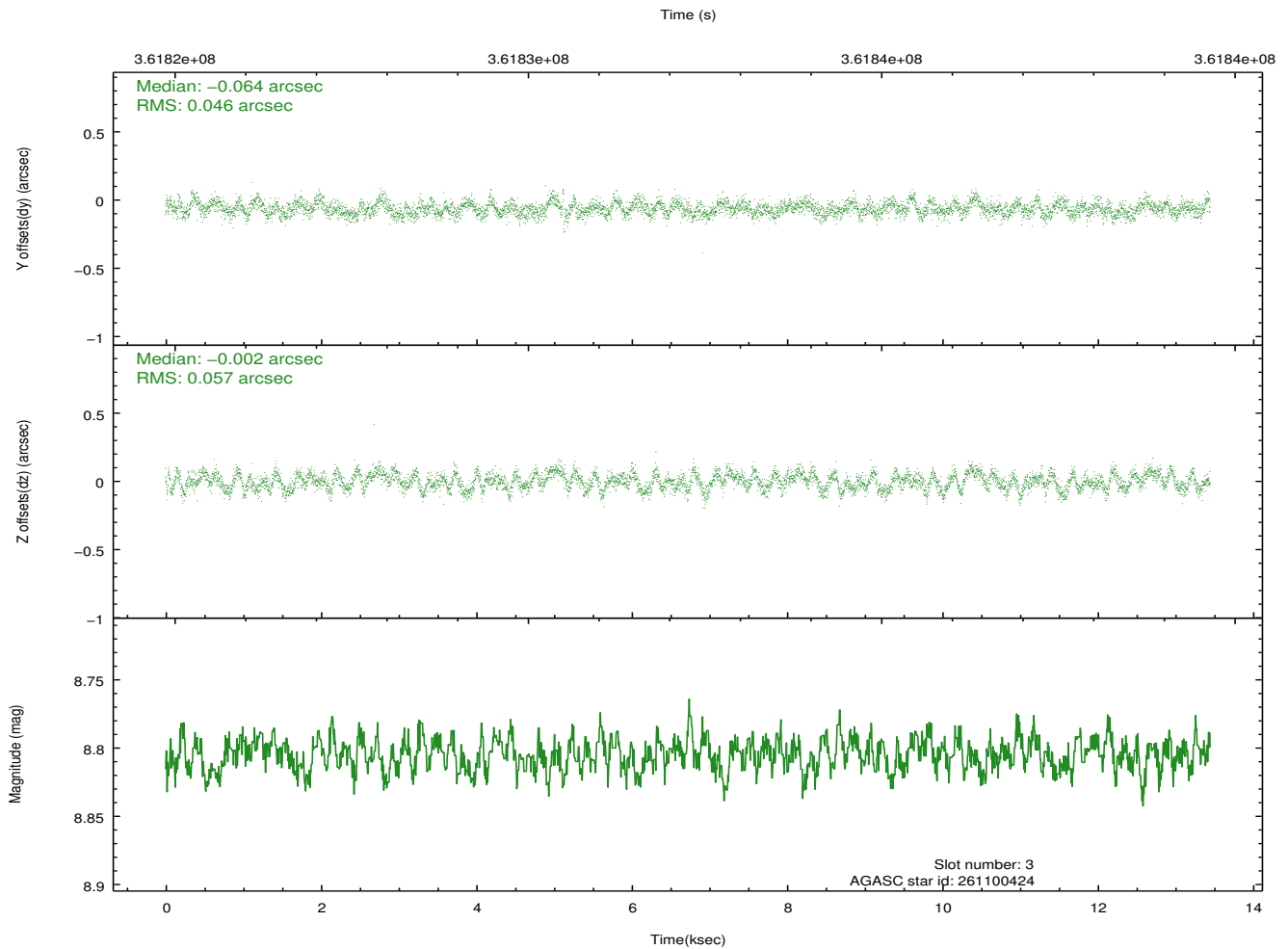
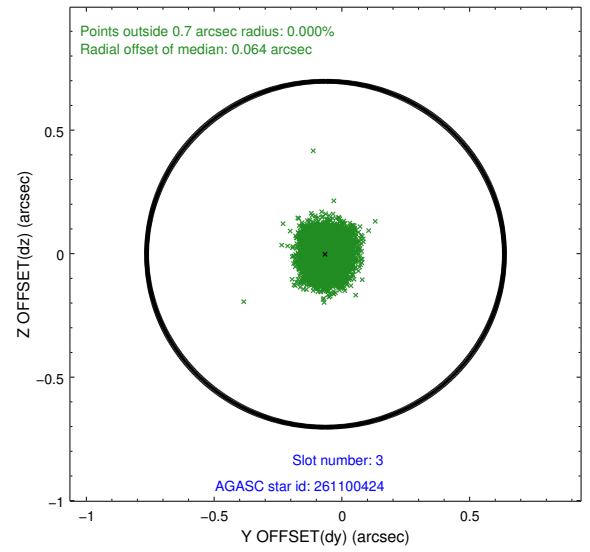
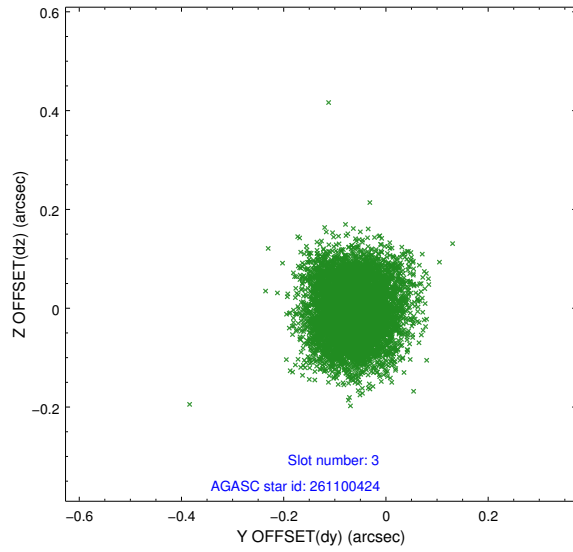


Slot Statistics

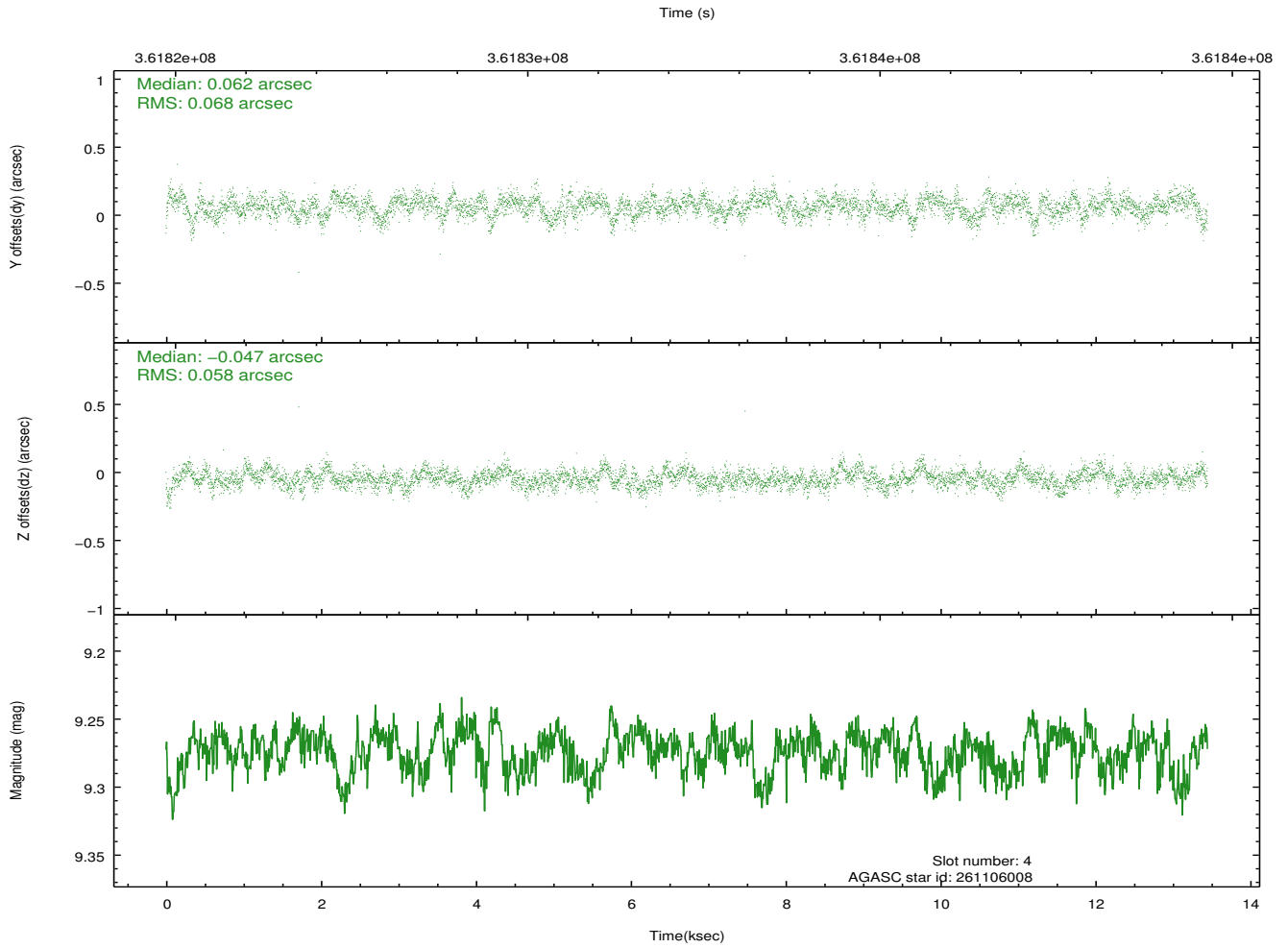
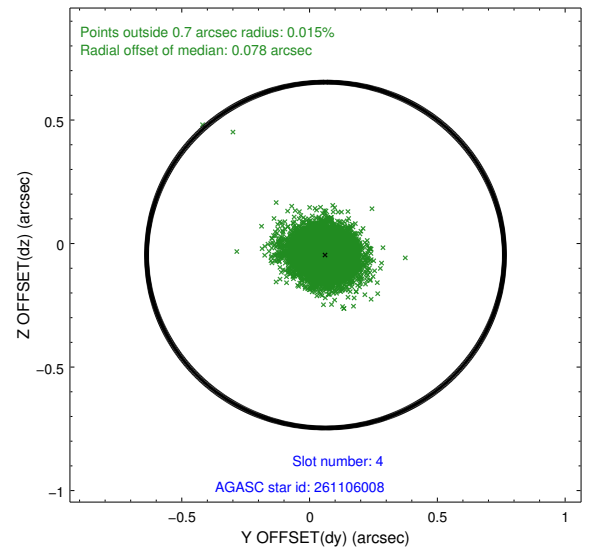
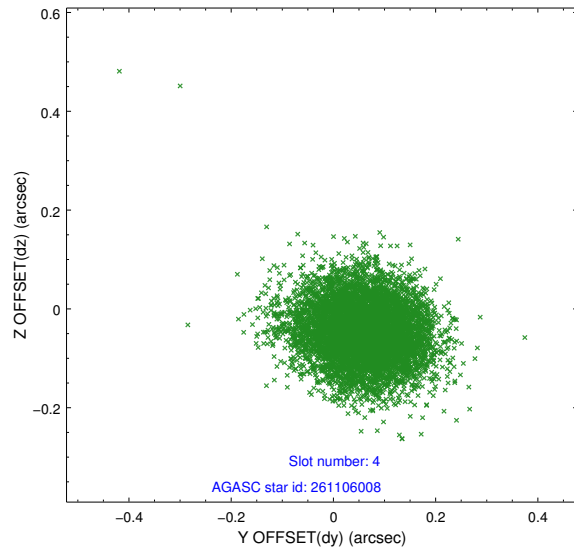
slot	status	id	mag	n_pts	med_dy	med_dz	dr1	dr2	ra	dec	mean_y	mean_z
0	FID	HRC-I-1	6.95	3281	-0.737	-0.029	0.004	0.009	0.000000	0.000000	-772.90	232.56
1	FID	HRC-I-2	7.07	3281	0.816	-0.025	0.004	0.009	0.000000	0.000000	837.96	233.65
2	UNUSED		0.00	0	0.000	0.000	0.000	0.000	0.000000	0.000000	0.00	0.00
3	GUIDE	261100424	8.80	6555	-0.064	-0.002	0.079	0.124	192.107071	27.783953	471.47	-1761.43
4	GUIDE	261106008	9.27	6548	0.062	-0.047	0.094	0.151	191.902860	27.409319	1969.36	-1727.98
5	GUIDE	261113144	6.23	6562	0.038	0.062	0.064	0.110	192.322716	27.552380	899.60	-769.78
6	GUIDE	261507256	8.35	6559	-0.158	-0.044	0.074	0.121	193.022402	28.129301	-1969.68	253.54
7	GUIDE	261507448	9.53	6550	0.121	0.023	0.084	0.137	192.816574	27.341077	849.87	982.10

2.4 Star Slots

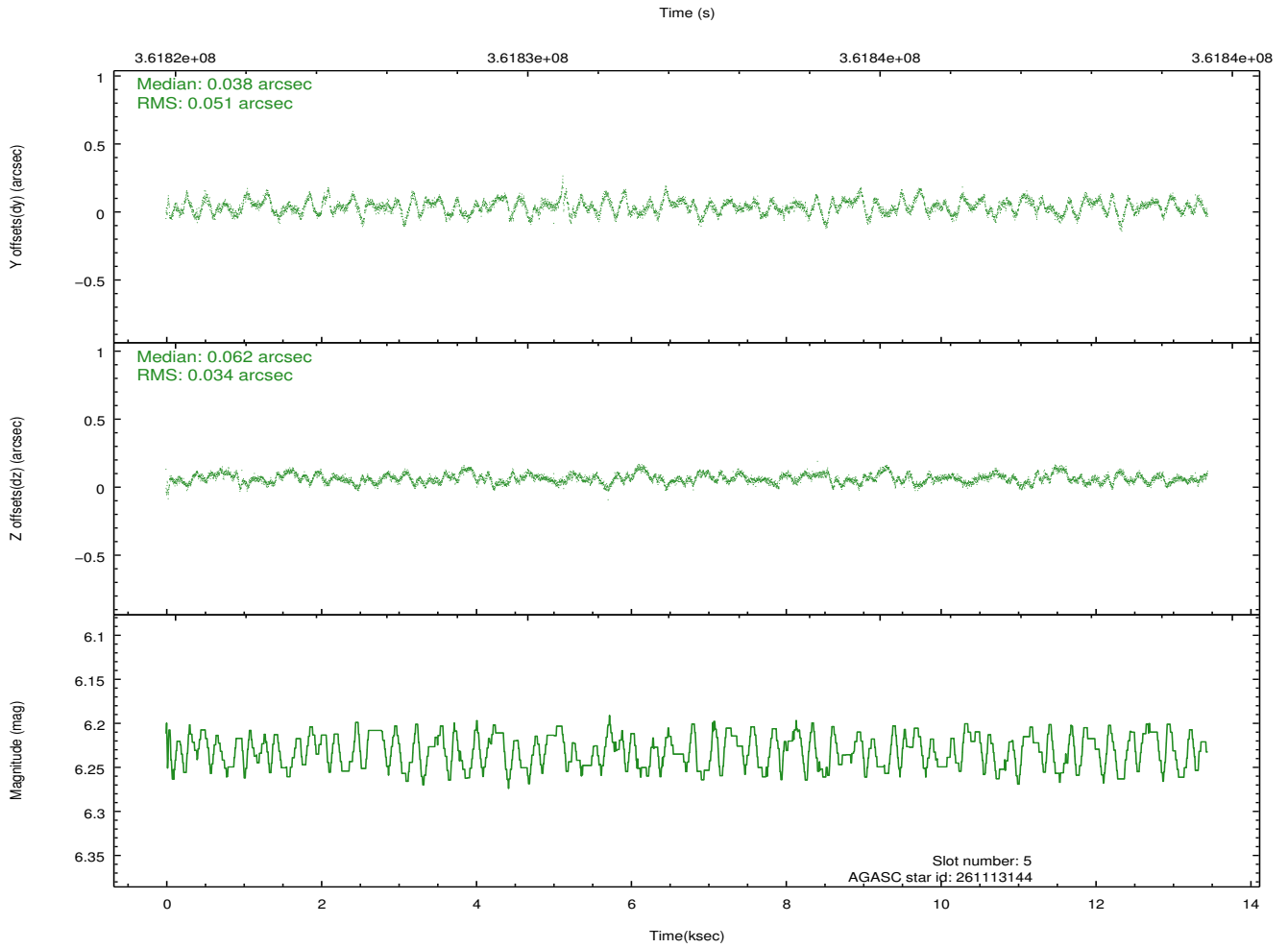
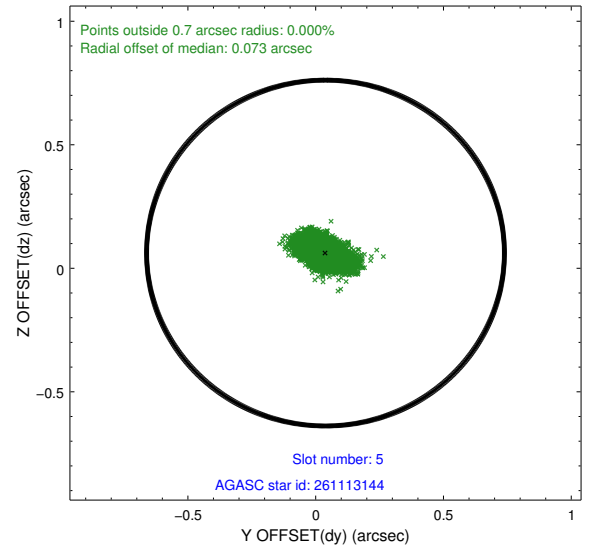
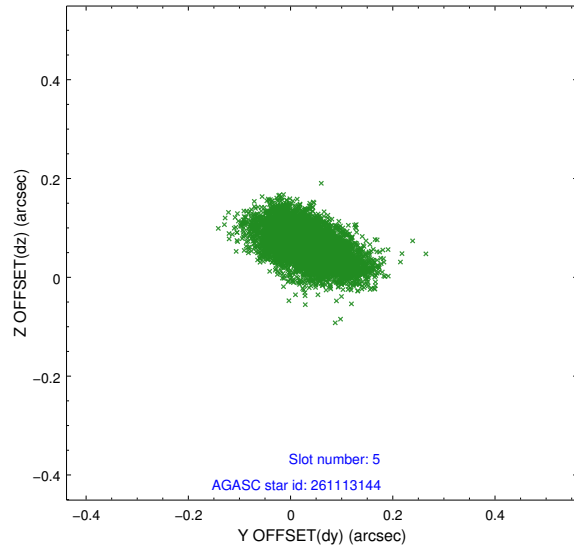
2.4.1 Slot 3



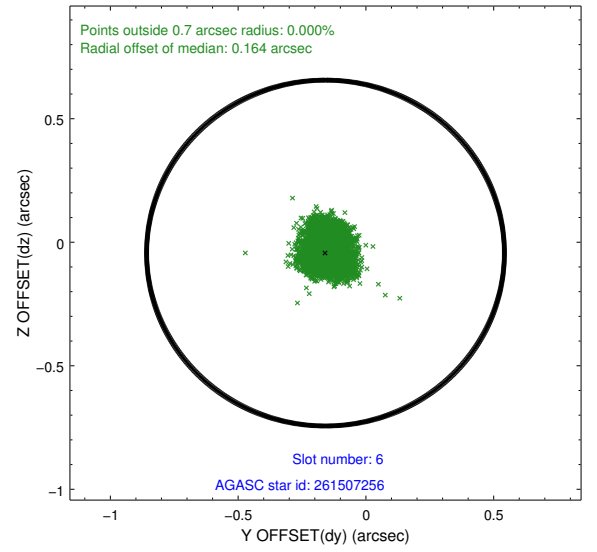
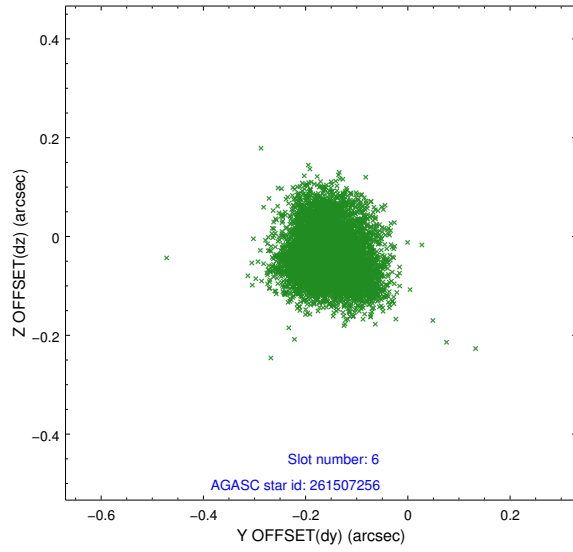
2.4.2 Slot 4



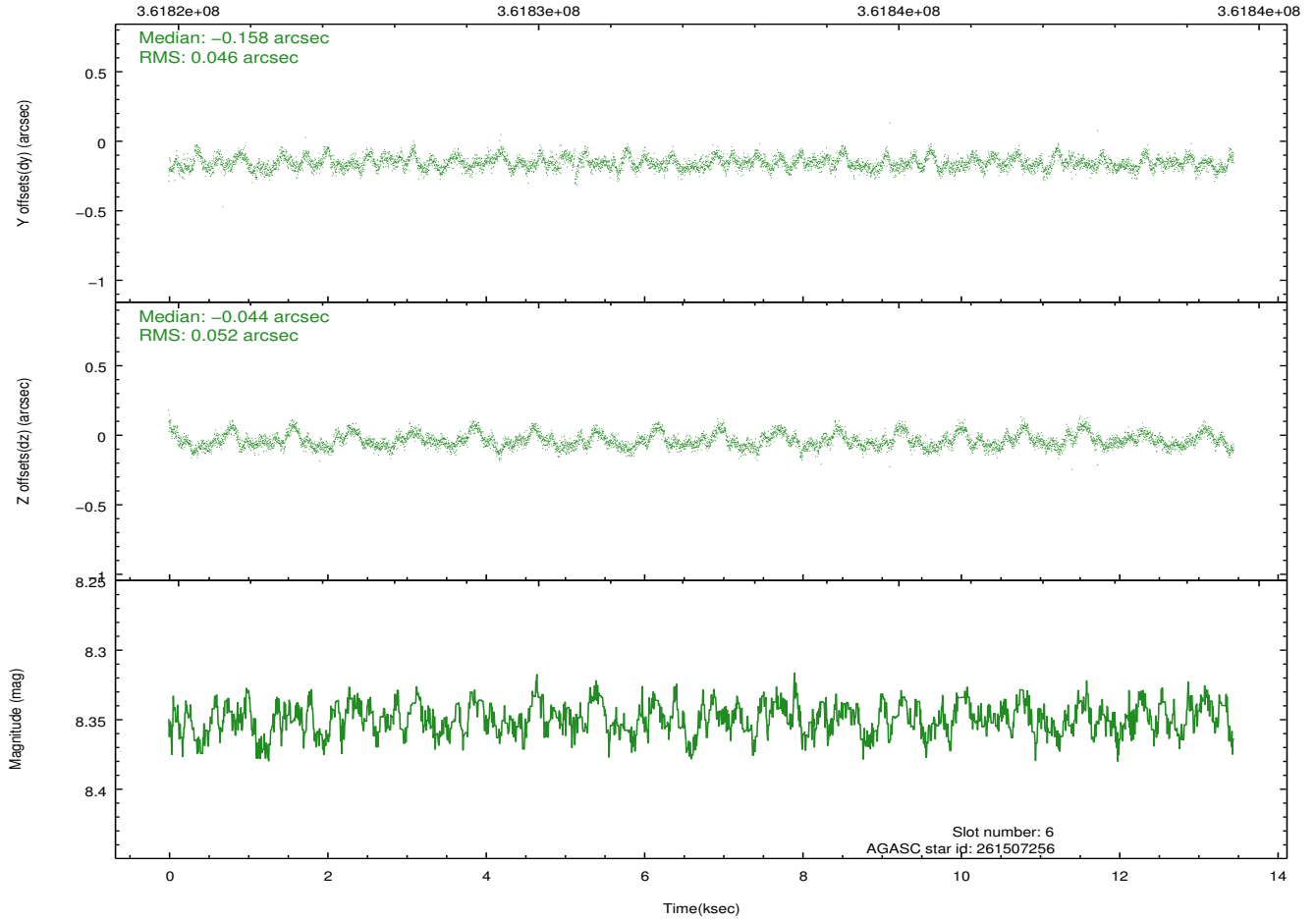
2.4.3 Slot 5



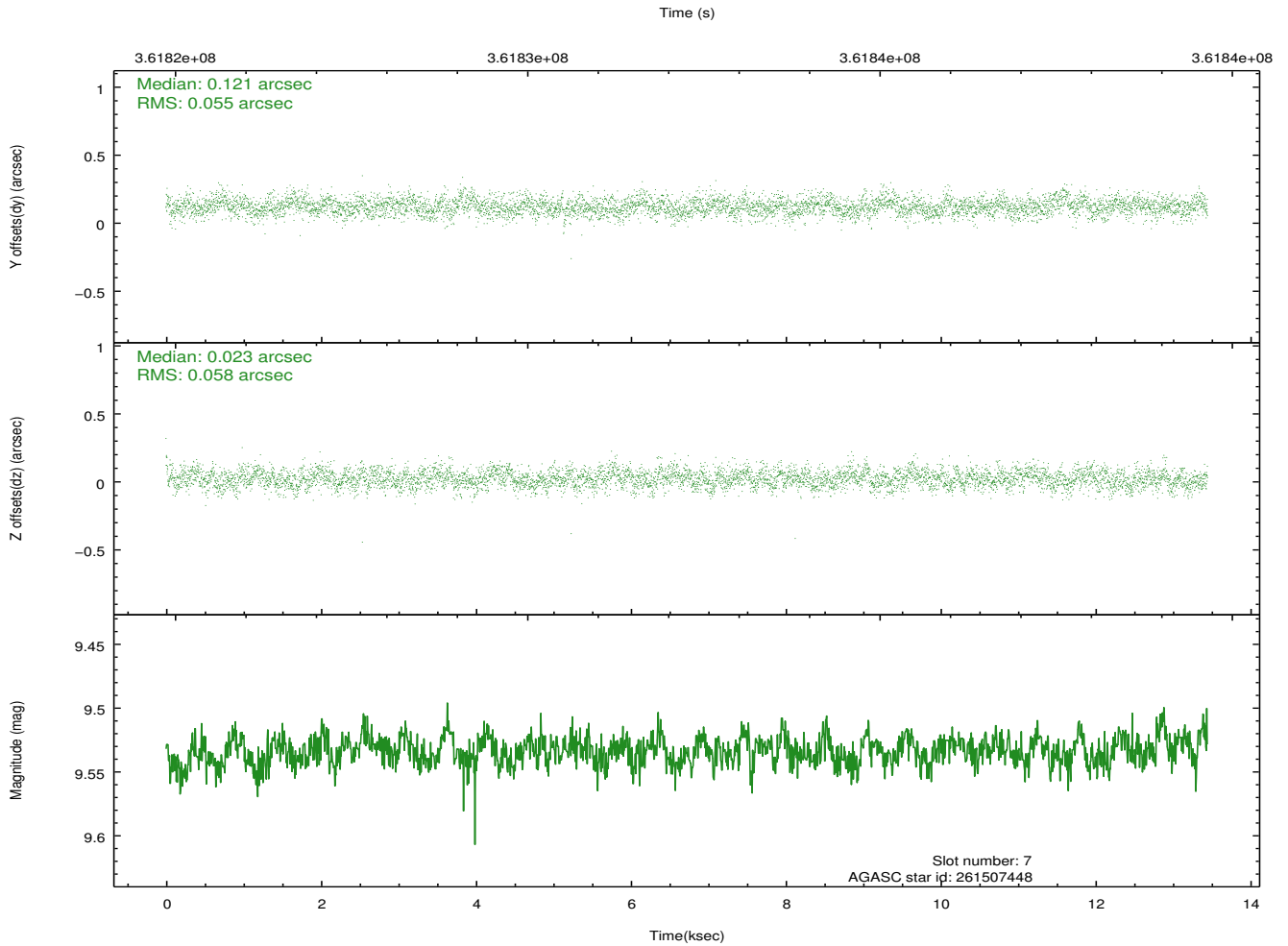
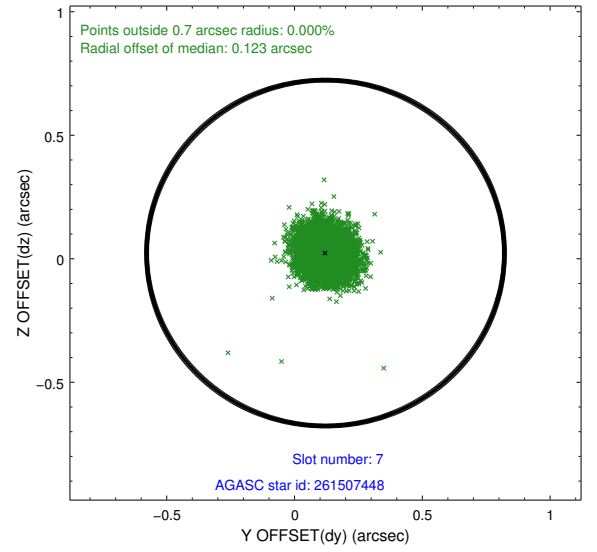
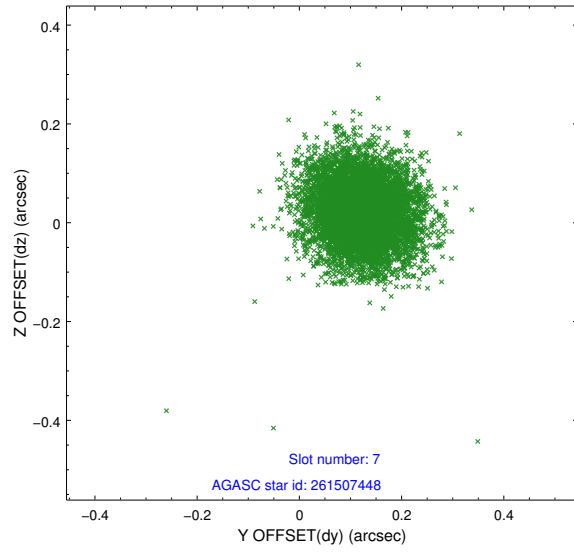
2.4.4 Slot 6



Time (s)

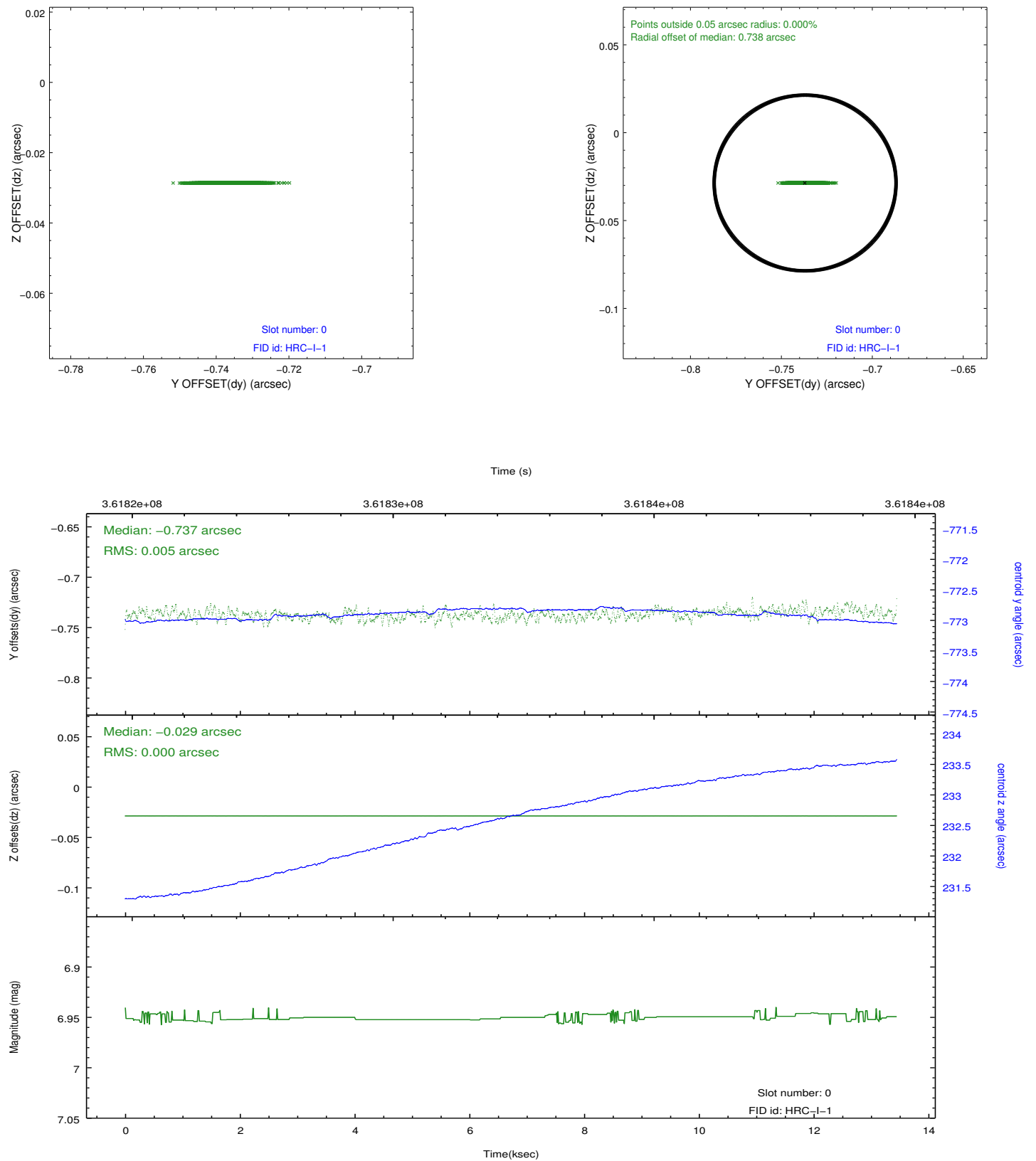


2.4.5 Slot 7

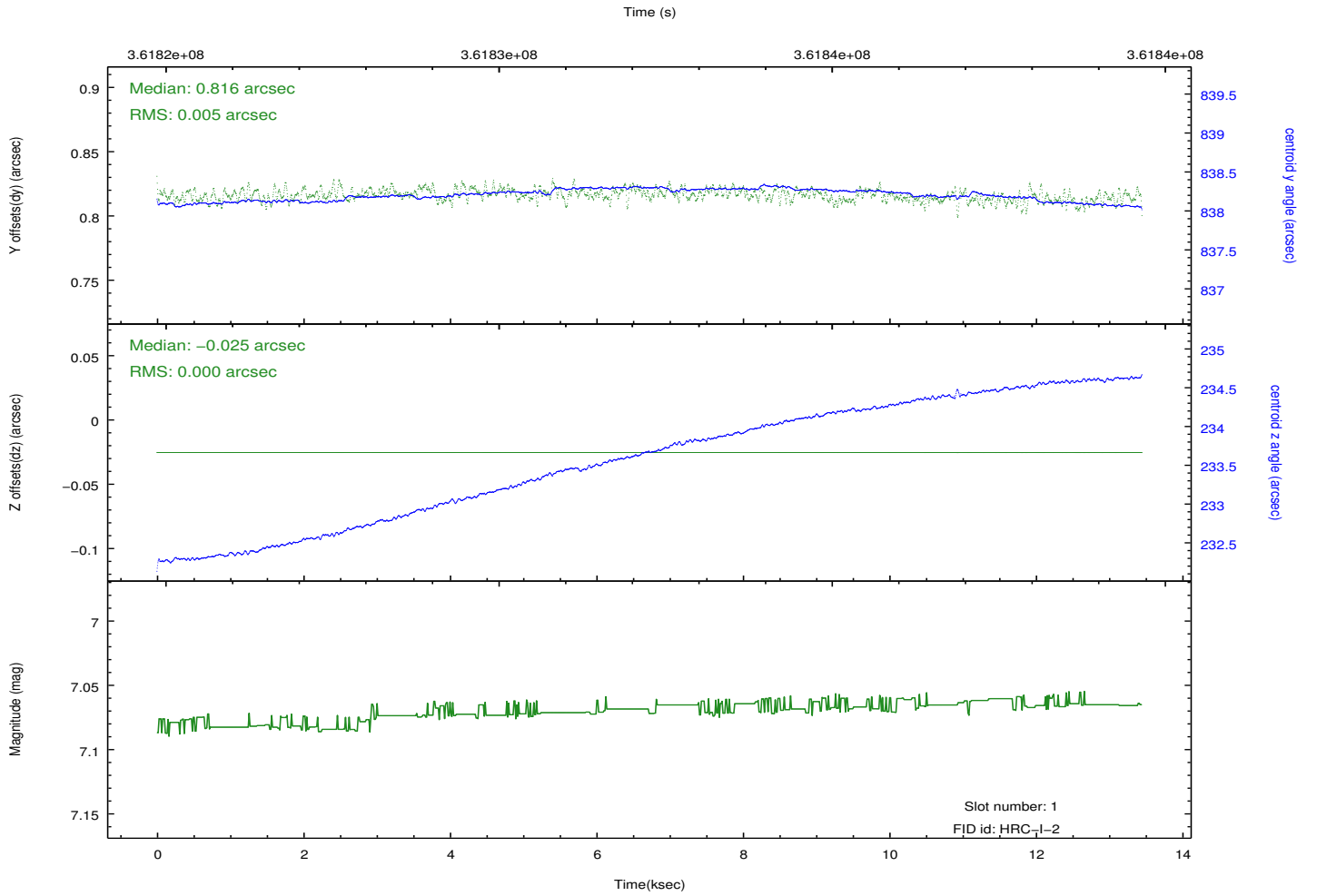
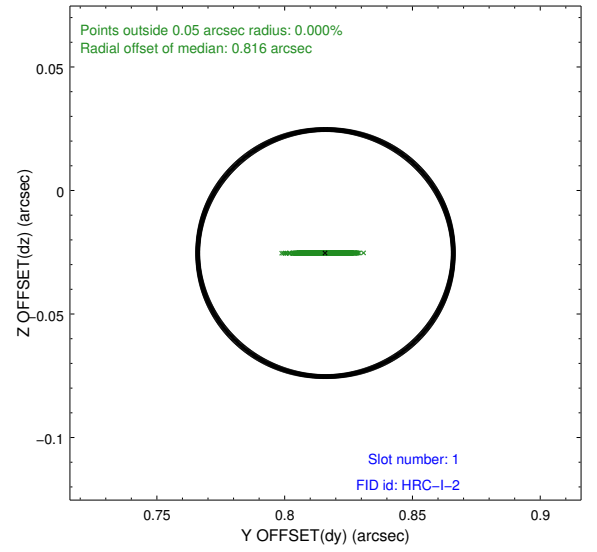
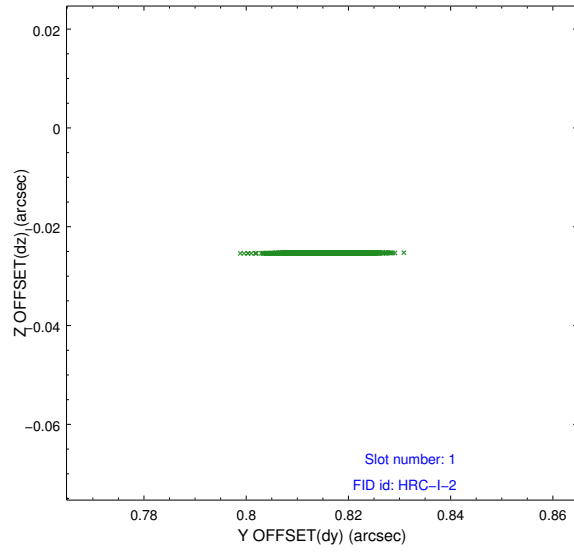


2.5 FID Slots

2.5.1 Slot 0



2.5.2 Slot 1



A Summary

A.1 Status

V&V Scientist	Jen Lauer
V&V Date (YYYY-MM-DD)	2012.08.20
V&V Edition	1
V&V Disposition and Status	OK
V&V Charge Time	13.3649756

A.2 Comments

Window constraint met. This observation has a large offset and only 2 available fid lights. At large SIM offsets we expect larger radial offsets and thus this observation is OK.