

V&V Reference Report

L2 ASCDS Version : 8.4.5

Observation 10520 - L2 Version 2
Chandra X-Ray Center

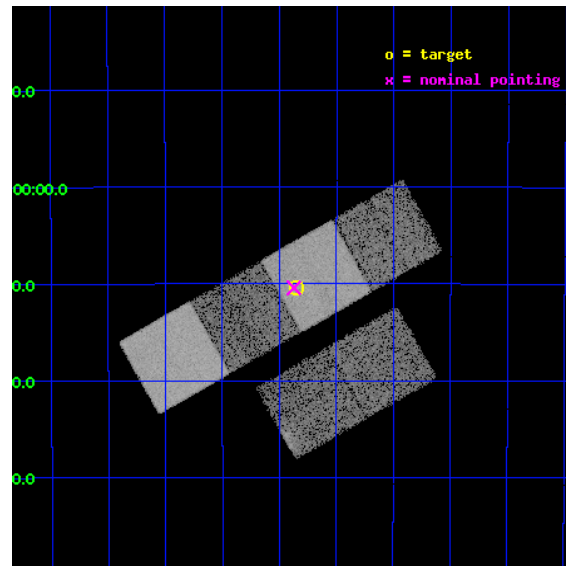
L2 Processing Date : Jun 9 2012

Contents

1	Front	2
2	OBI	3
2.1	OBI	3
2.1.1	Images	3
2.1.2	Bias	3
2.1.3	Parameters	4
2.1.4	Events	4
2.2	Compared Parameters	5
2.3	Aspect	6
2.4	Star Slots	9
2.4.1	Slot 3	9
2.4.2	Slot 4	10
2.4.3	Slot 5	11
2.4.4	Slot 6	12
2.4.5	Slot 7	13
2.5	FID Slots	14
2.5.1	Slot 0	14
2.5.2	Slot 1	15
2.5.3	Slot 2	16
A	Summary	17
A.1	Status	17
A.2	Comments	17

1 Front

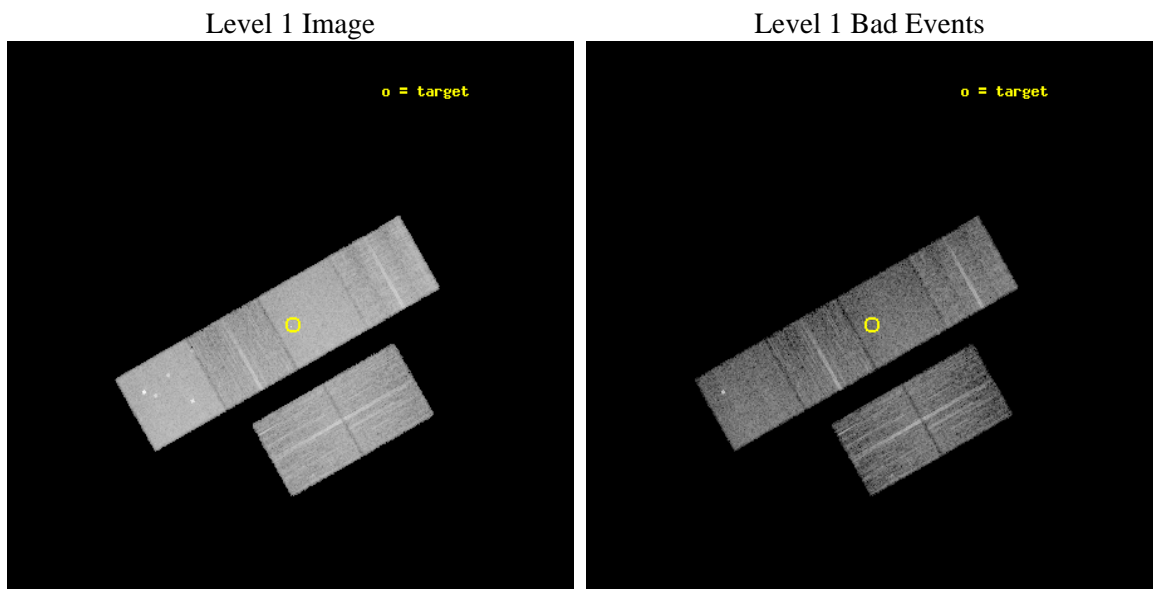
seq_num	900888	Sequence number
obs_id	10520	Observation id
title	ChIcAGO: Chandra Identification of ASCA Galactic Objects	Proposal
observer	Prof. Bryan Gaensler	Principal investigator
object	AX J172050-3710	Source name
dtcycle	0	
cycle	P	events from which exps? Prim/Second/Both
ra_targ	260.212083	Observer's specified target RA [deg]
dec_targ	-37.174	Observer's specified target Dec [deg]
ra_nom	260.21820278	Nominal RA [deg]
dec_nom	-37.173768264634	Nominal Dec [deg]
roll_nom	330.38590638097	Nominal Roll [deg]
revision	2	Processing version of data
ontime	6863.9999744892	Sum of GTIs [s]
livetime	6777.0838738076	Livetime [s]
ontime2	6863.9999744892	Sum of GTIs [s]
ontime3	6863.9999744892	Sum of GTIs [s]
ontime5	6863.9999744892	Sum of GTIs [s]
ontime6	6863.9999744892	Sum of GTIs [s]
ontime7	6863.9999744892	Sum of GTIs [s]
ontime8	6863.9999744892	Sum of GTIs [s]
l2events	126987	Number of level 2 events



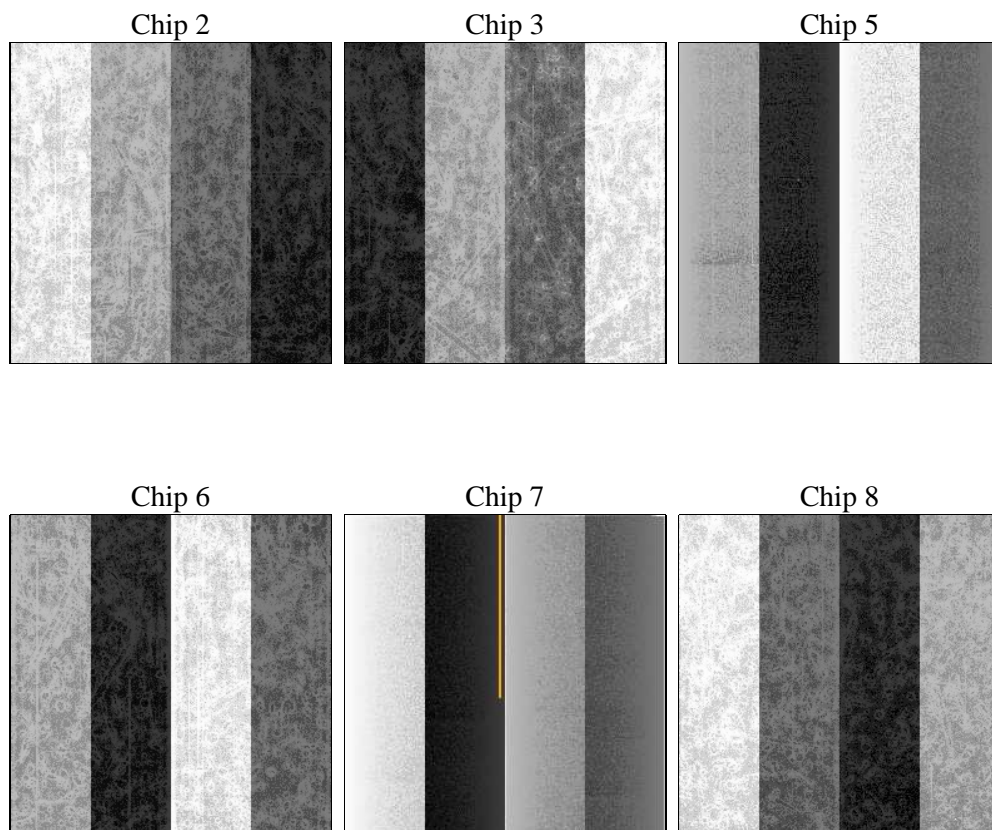
2 OBI

2.1 OBI

2.1.1 Images



2.1.2 Bias



2.1.3 Parameters

obi_num	0	Obi number	sched_exp_time	6700.000000	[s] Scheduled observation exposure time
ascdsver	8.4.5	Processing system revision	ontime	6863.9999744892	Sum of GTIs [s]
caldsver	4.4.10	 	ontime2	6863.9999744892	Sum of GTIs [s]
date	2012-06-09T07:36:59	Date and time of file creation	ontime3	6863.9999744892	Sum of GTIs [s]
revision	2	Processing version of data	ontime5	6863.9999744892	Sum of GTIs [s]
			ontime6	6863.9999744892	Sum of GTIs [s]
			ontime7	6863.9999744892	Sum of GTIs [s]
			ontime8	6863.9999744892	Sum of GTIs [s]
			l1events	532139	Number of level 1 events

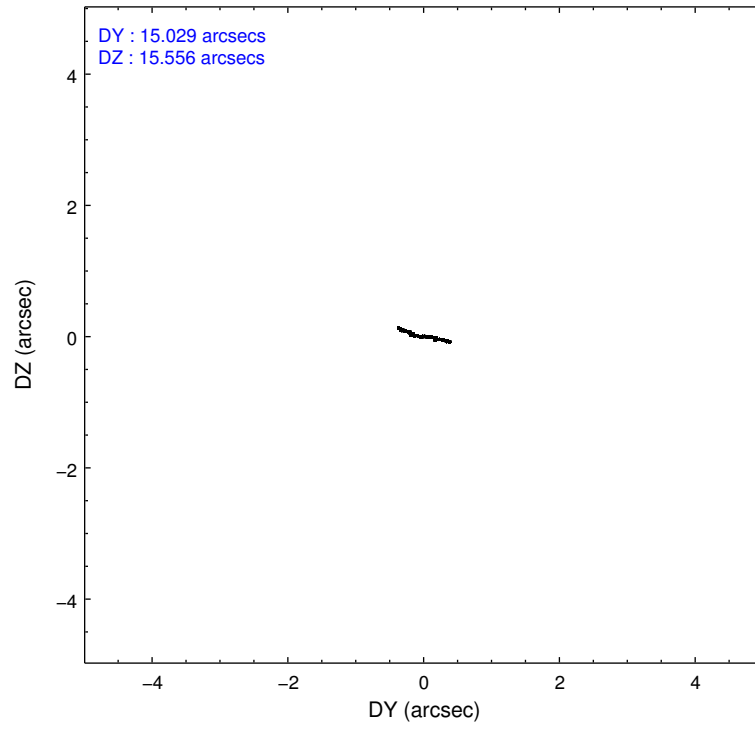
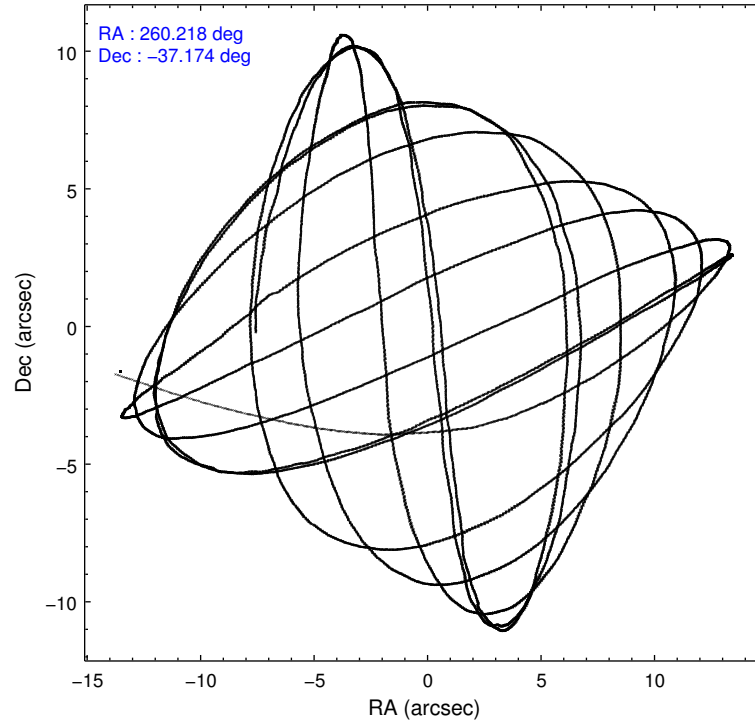
2.1.4 Events

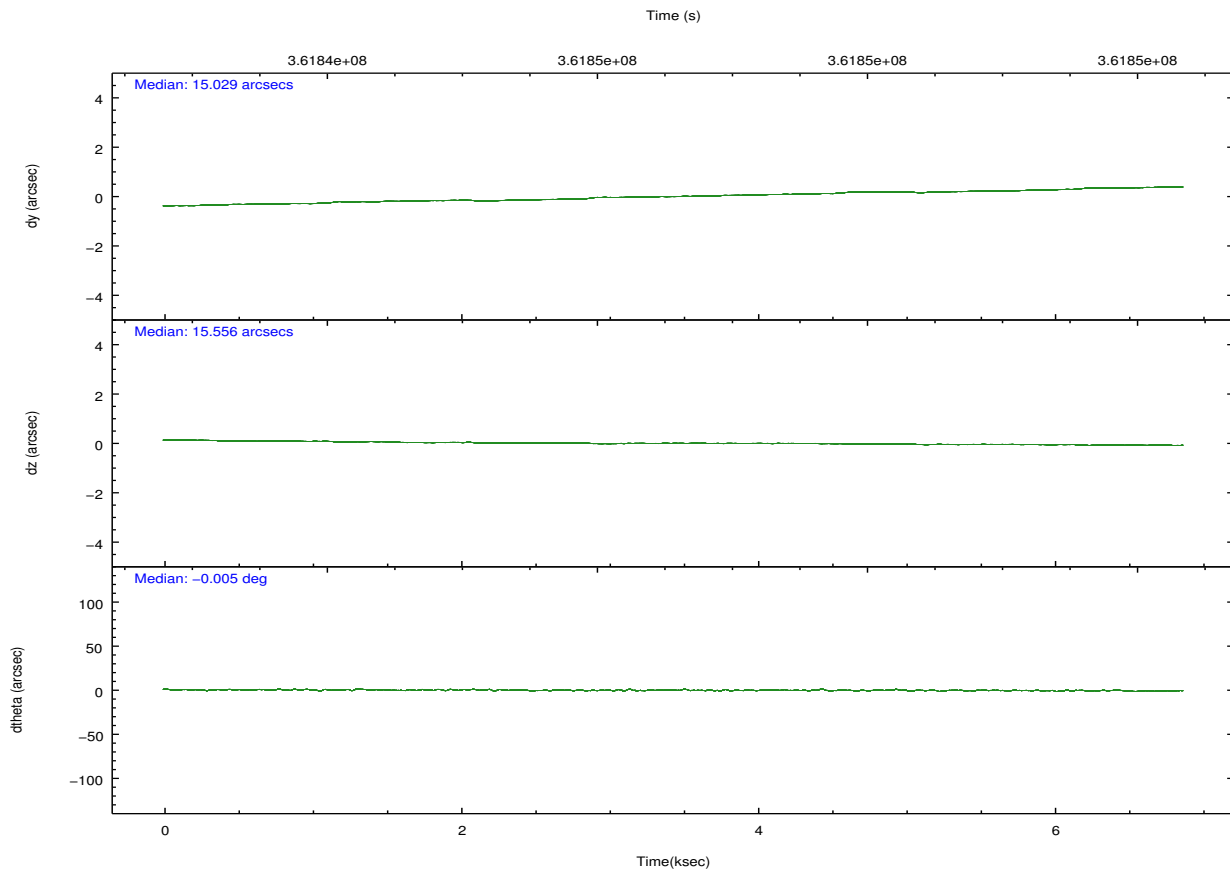
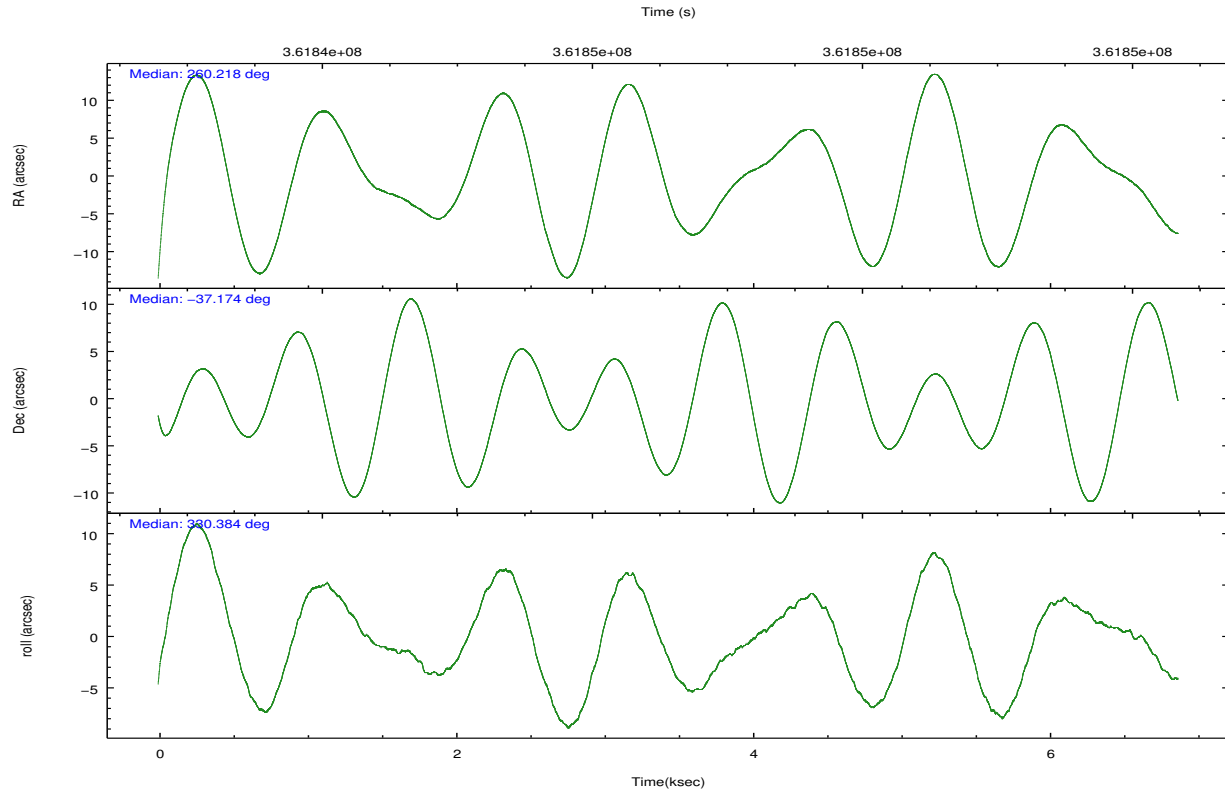
	ccd 2	ccd 3	ccd 5	ccd 6	ccd 7	ccd 8		ccd 2	ccd 3	ccd 5	ccd 6	ccd 7	ccd 8
level 1 events	76436	69209	117632	70793	103729	94340	grade 0 events	4471	4014	5407	3723	3772	7356
rejected events	66724	60213	62740	61639	60053	71119		5%	5%	4%	5%	3%	7%
rejected %	87%	87%	53%	87%	57%	75%	grade 1 events	50	49	209	41	115	68
								0%	0%	0%	0%	0%	0%
							grade 2 events	2119	1799	17564	1985	9084	5335
								2%	2%	14%	2%	8%	5%
							grade 3 events	807	872	1981	841	3634	2498
								1%	1%	1%	1%	3%	2%
							grade 4 events	815	850	1828	845	3740	2278
								1%	1%	1%	1%	3%	2%
							grade 5 events	3032	3455	8234	3405	9520	4728
								3%	4%	6%	4%	9%	5%
							grade 6 events	1565	1509	28493	1829	23693	5931
								2%	2%	24%	2%	22%	6%
							grade 7 events	63577	56661	53916	58124	50171	66146
								83%	81%	45%	82%	48%	70%

2.2 Compared Parameters

Parameter	Planned	Actual	Parameter	Planned	Actual
Instrument	ACIS	ACIS	Obspar format version number	7	7
Detector	ACIS-235678	ACIS-235678	Obspar file type	PREDICTED	ACTUAL
Grating	NONE	NONE	Obspar update status	NONE	UPDATED
Data mode	FAINT	FAINT	CCD I0 on	N	N
Observation mode	POINTING	POINTING	CCD I1 on	N	N
[deg] Pointing RA	260.183854	260.2182027799982	CCD I2 on	O2	Y
[deg] Pointing Dec	-37.174376	-37.17376826463374	CCD I3 on	O3	Y
[deg] Pointing Roll	330.208518	330.385906380972	CCD S0 on	N	N
[mm] SIM focus pos	-0.684267	-0.6828225247311905	CCD S1 on	O1	Y
[mm] SIM defocus	0	0.001444936568705701	CCD S2 on	O5	Y
[mm] SIM translation stage pos	-190.132523	-190.1400660498719	CCD S3 on	Y	Y
[mm] SIM translation stage offset	0	0.00754346686406393	CCD S4 on	O4	Y
[s] Observation start time (MET)	361843293.184000	361842206.84011	CCD S5 on	N	N
Observation start date	2009-06-20T00:00:27	2009-06-19T23:43:26	Number of optional ACIS chips dropped	0	0
[s] Observation end time (MET)	361849993.184000	361850484.74052	On-chip summing requested	N	N
Observation end date	2009-06-20T01:52:07	2009-06-20T02:01:24	Subarray requested	NONE	NONE
Read mode	TIMED	TIMED	Alternating exposures requested	N	N
			[s] Primary exposure time	0.000000	3.2

2.3 Aspect



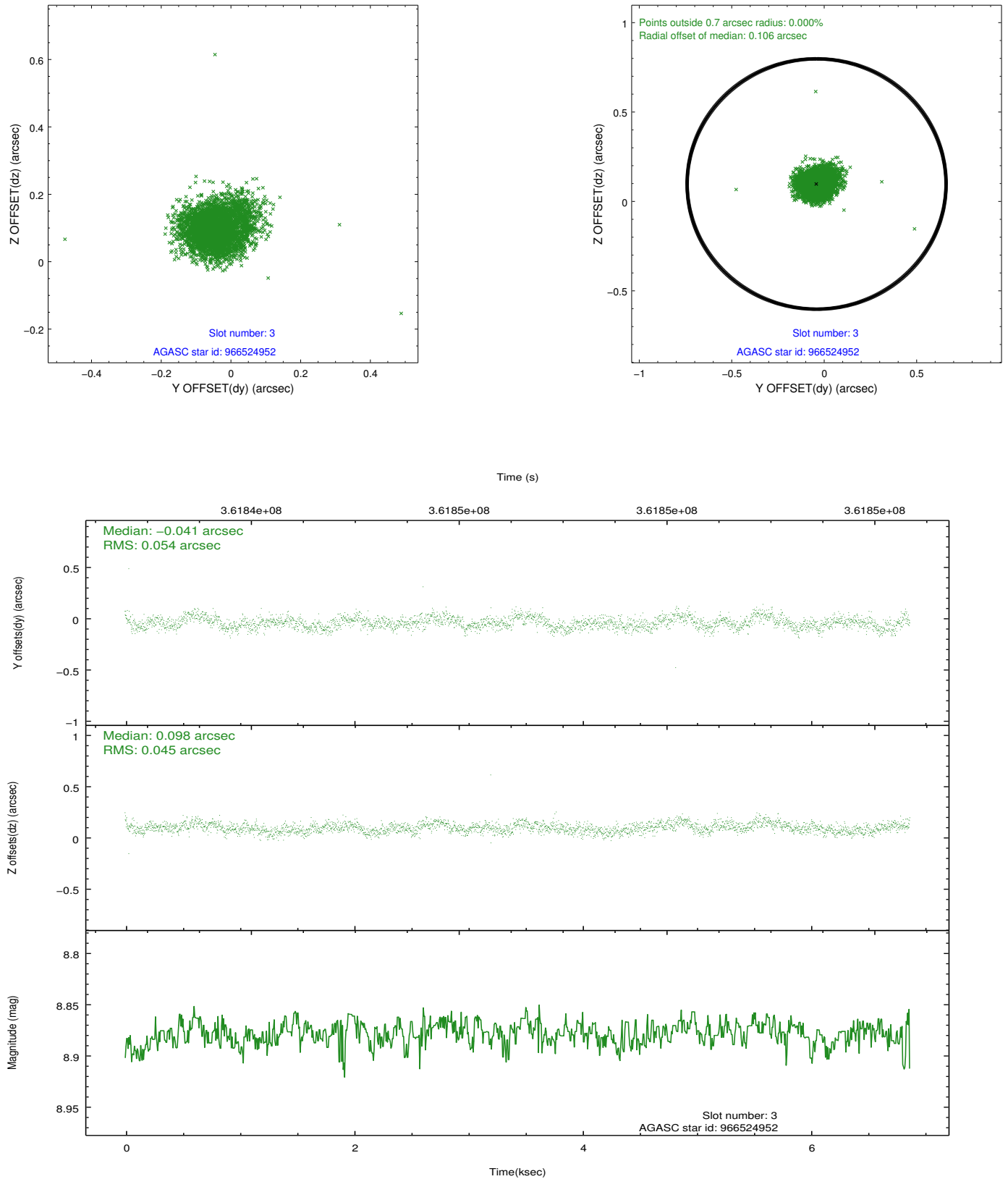


Slot Statistics

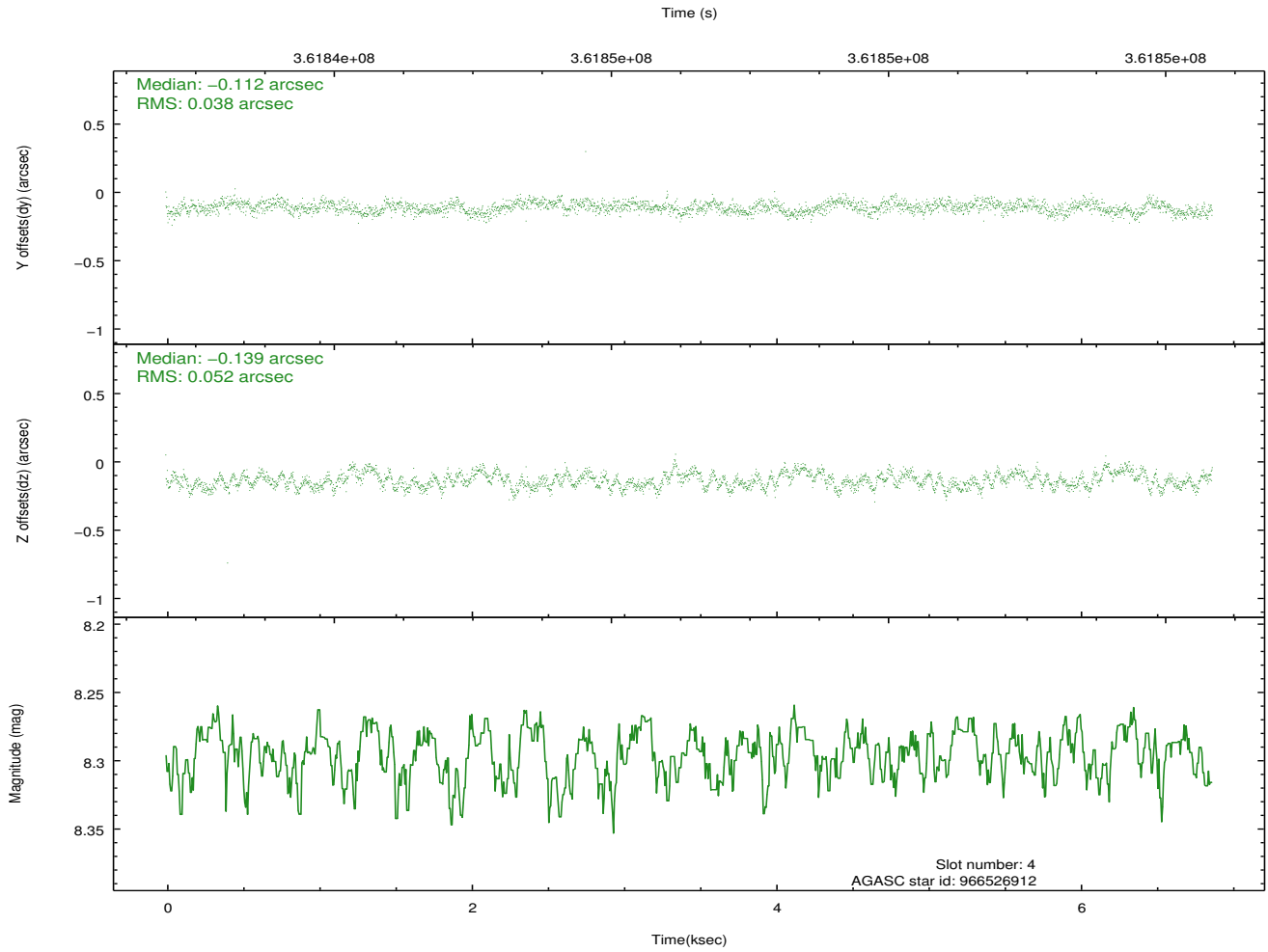
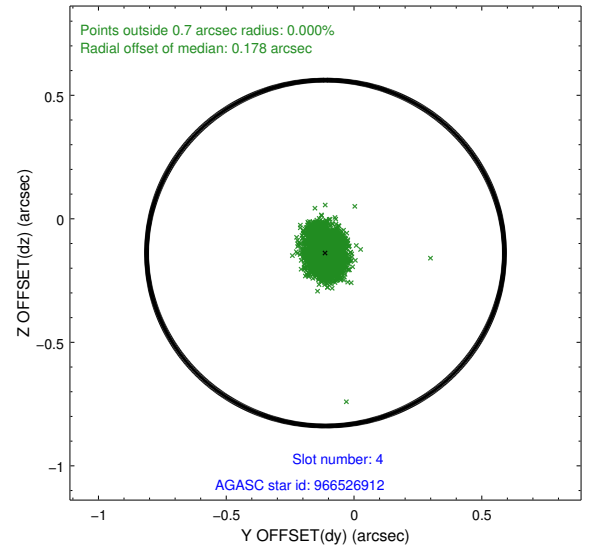
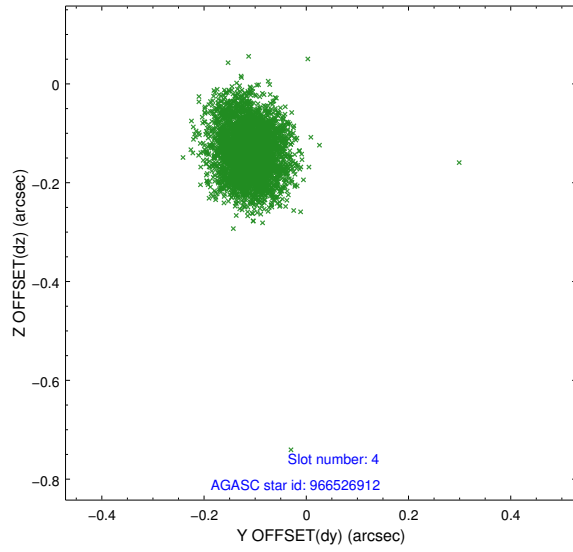
slot	status	id	mag	n_pts	med_dy	med_dz	dr1	dr2	ra	dec	mean_y	mean_z
0	FID	ACIS-S-4	6.96	1676	0.130	-0.005	0.007	0.011	0.000000	0.000000	2145.48	171.72
1	FID	ACIS-S-5	6.99	1676	-0.169	-0.008	0.008	0.015	0.000000	0.000000	-1819.93	165.24
2	FID	ACIS-S-6	7.10	1676	0.010	0.027	0.010	0.015	0.000000	0.000000	392.69	809.03
3	GUIDE	966524952	8.88	3350	-0.041	0.098	0.074	0.118	260.699456	-37.437497	1751.96	-93.25
4	GUIDE	966526912	8.30	3350	-0.112	-0.139	0.069	0.108	260.589606	-37.083992	851.57	858.92
5	GUIDE	966527864	8.15	3352	-0.059	0.178	0.078	0.119	259.198901	-37.409371	-2016.12	-2146.06
6	GUIDE	966527920	8.34	3353	0.155	-0.113	0.077	0.128	259.397566	-37.262380	-1793.11	-1403.31
7	GUIDE	966526152	8.61	3347	0.048	-0.026	0.070	0.112	260.874678	-37.077581	1552.20	1281.45

2.4 Star Slots

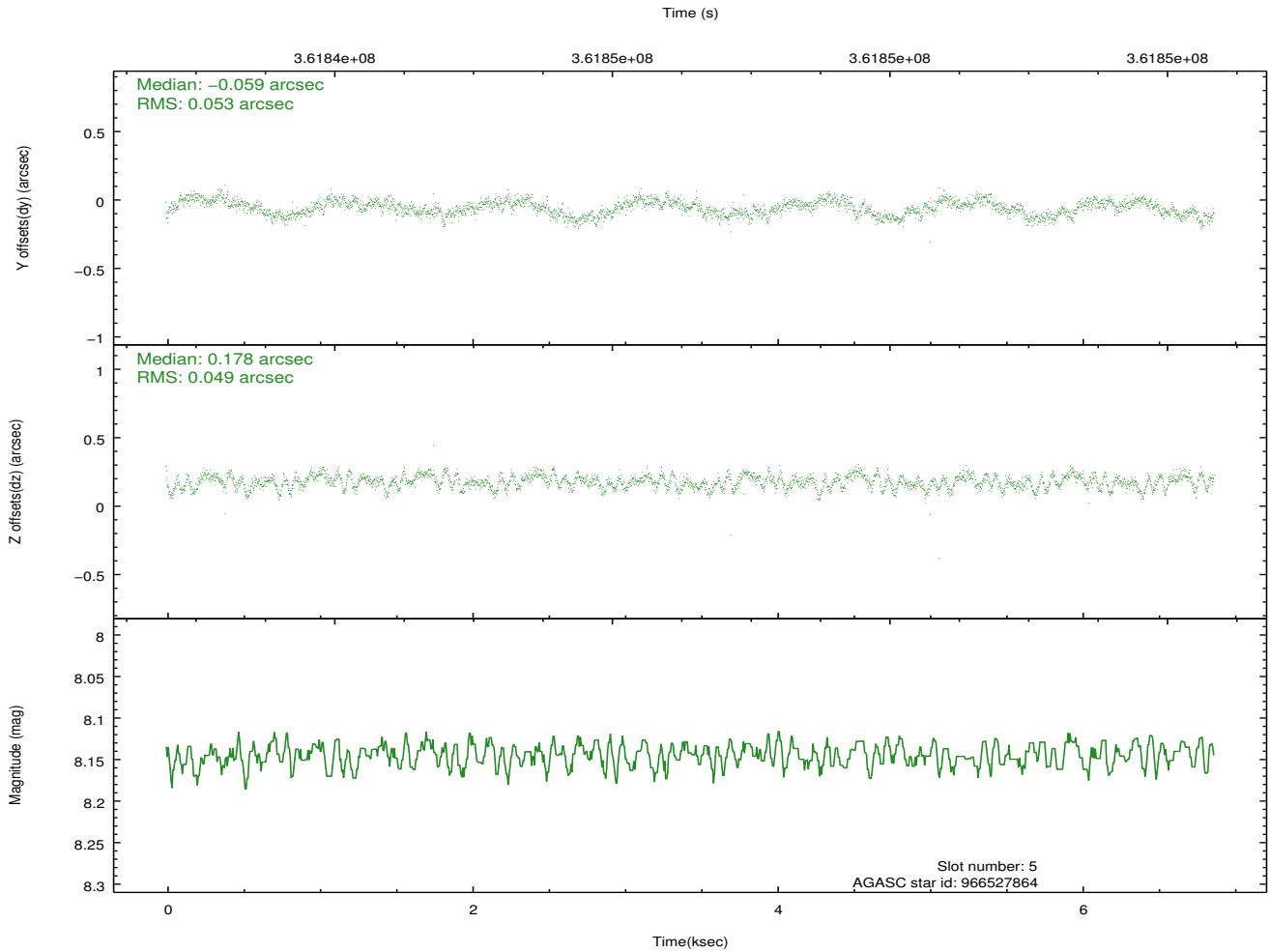
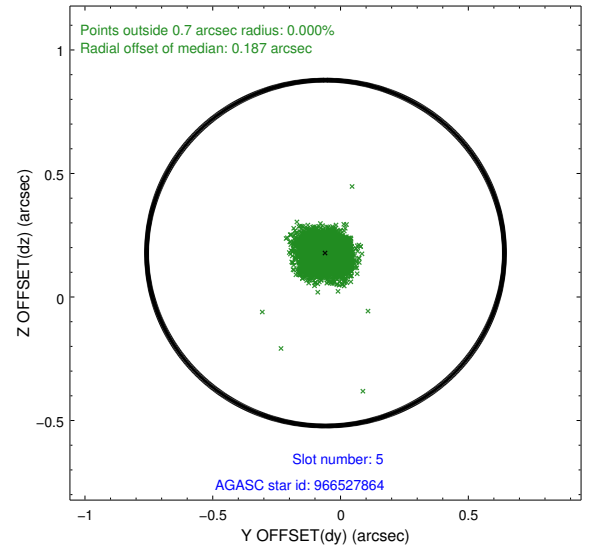
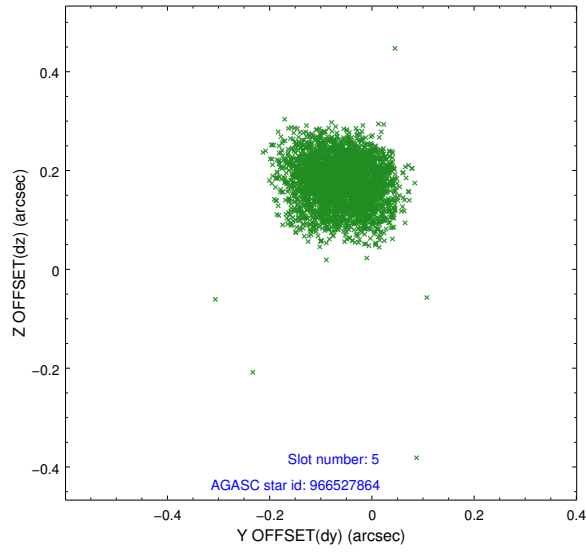
2.4.1 Slot 3



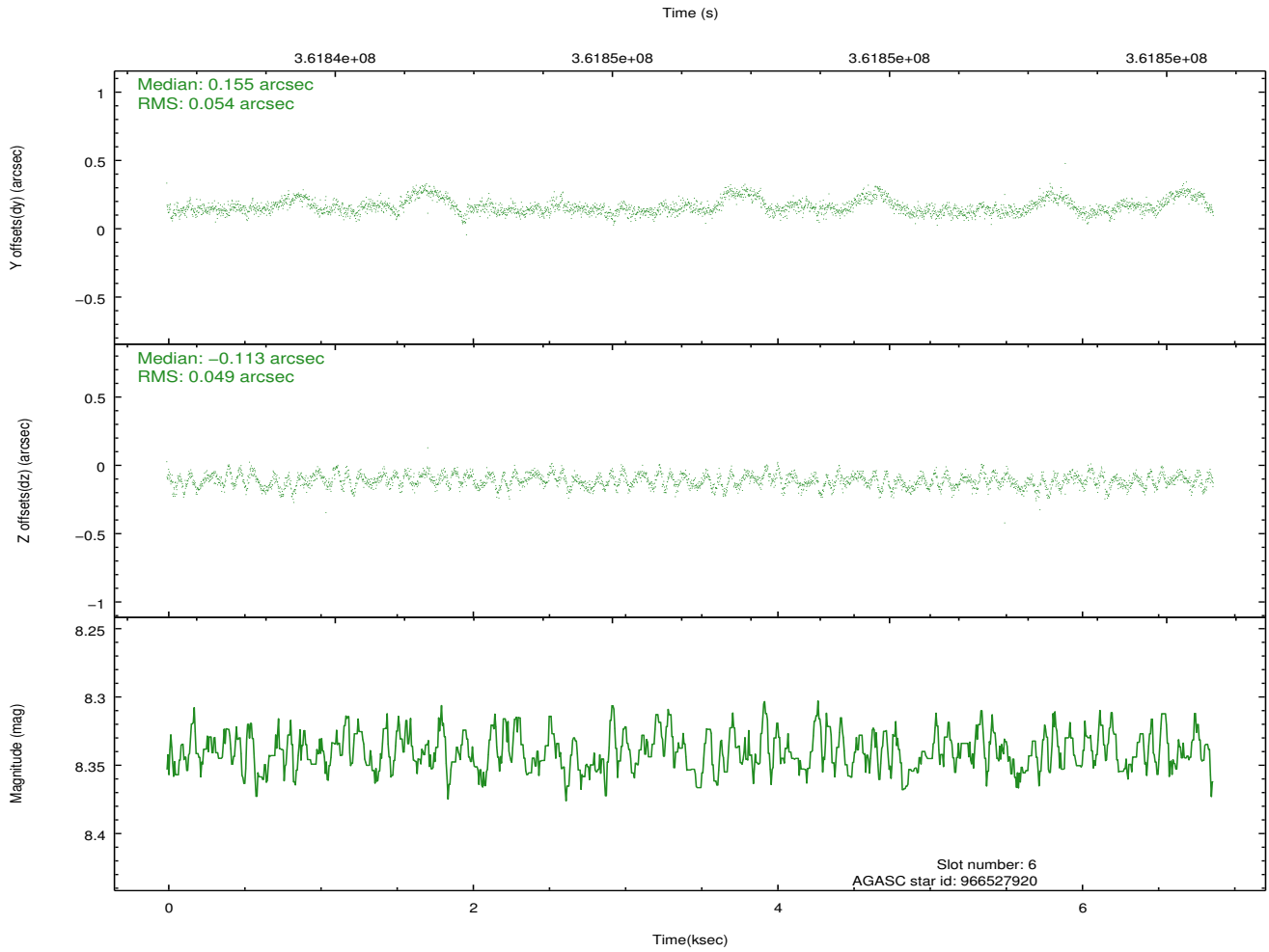
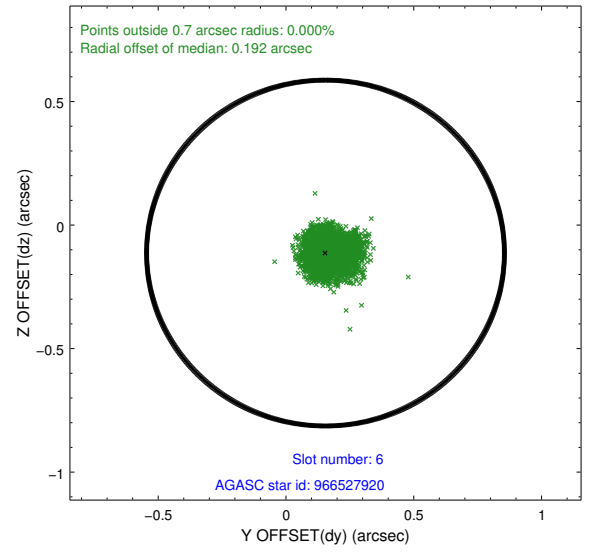
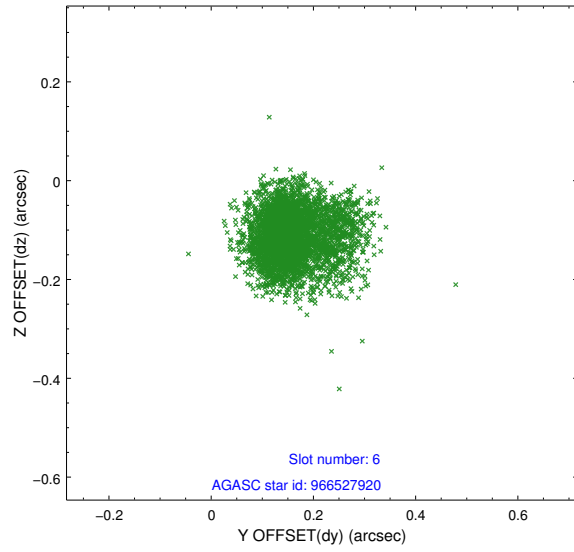
2.4.2 Slot 4



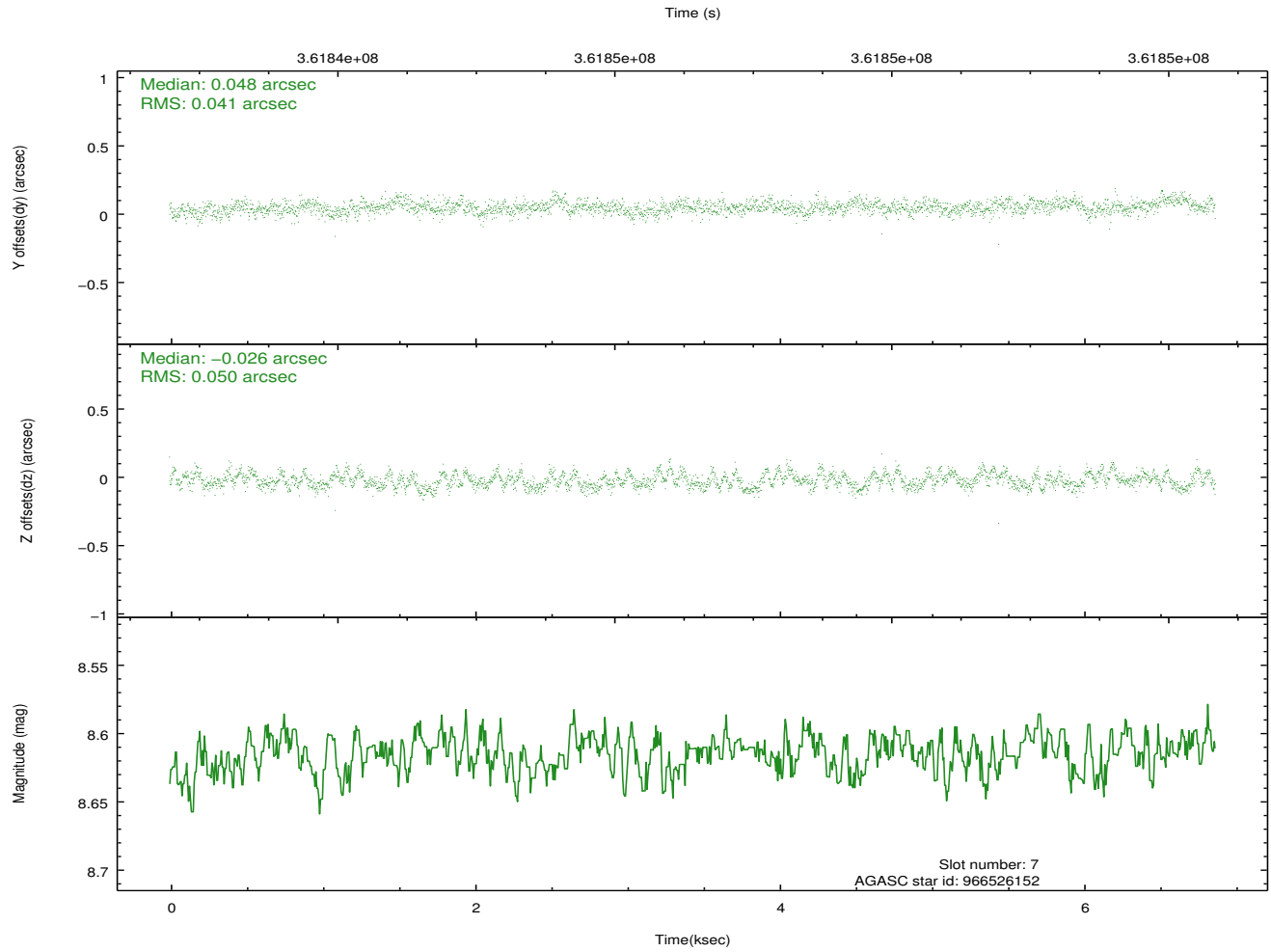
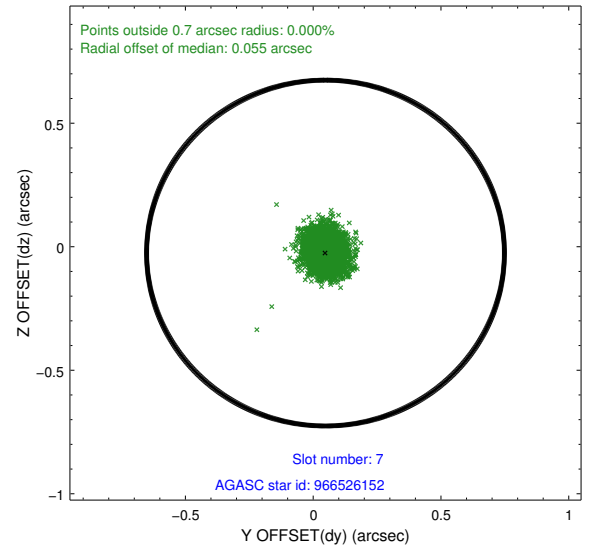
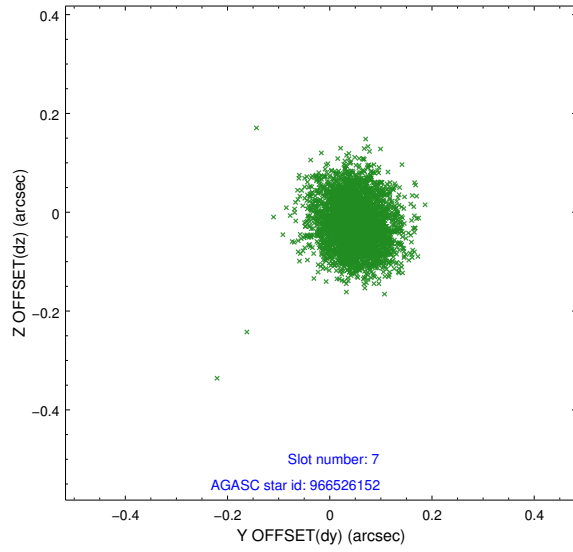
2.4.3 Slot 5



2.4.4 Slot 6

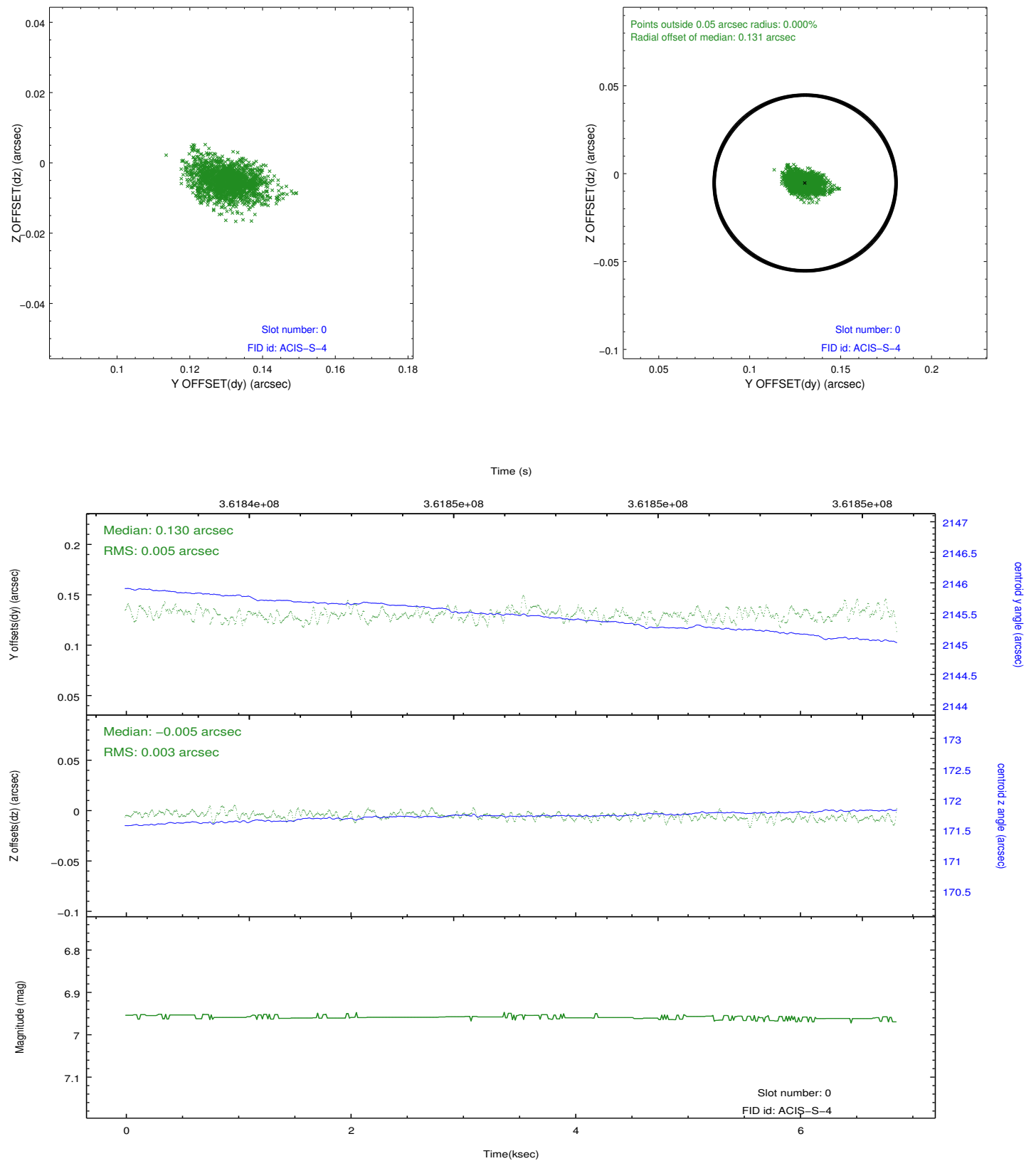


2.4.5 Slot 7

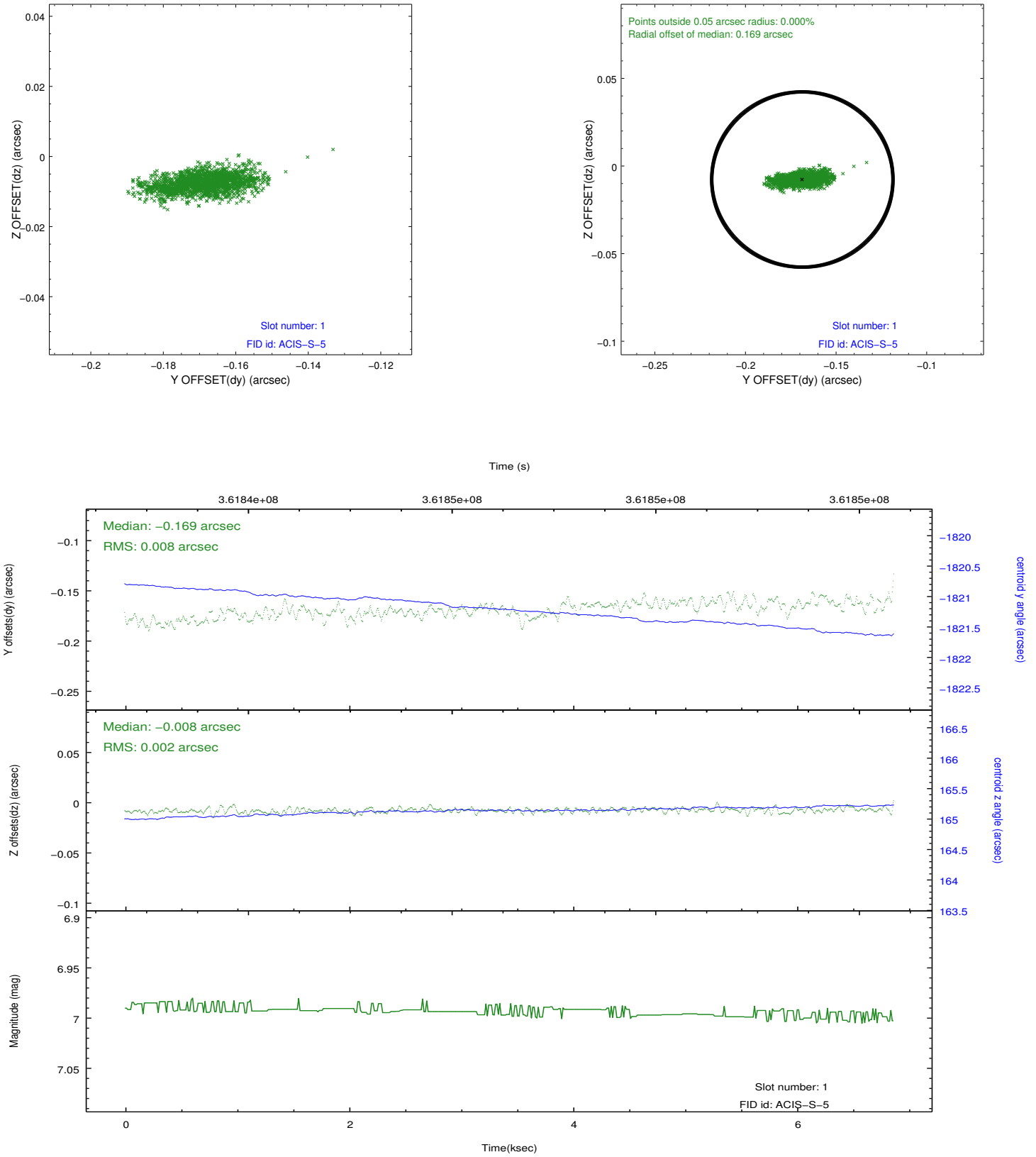


2.5 FID Slots

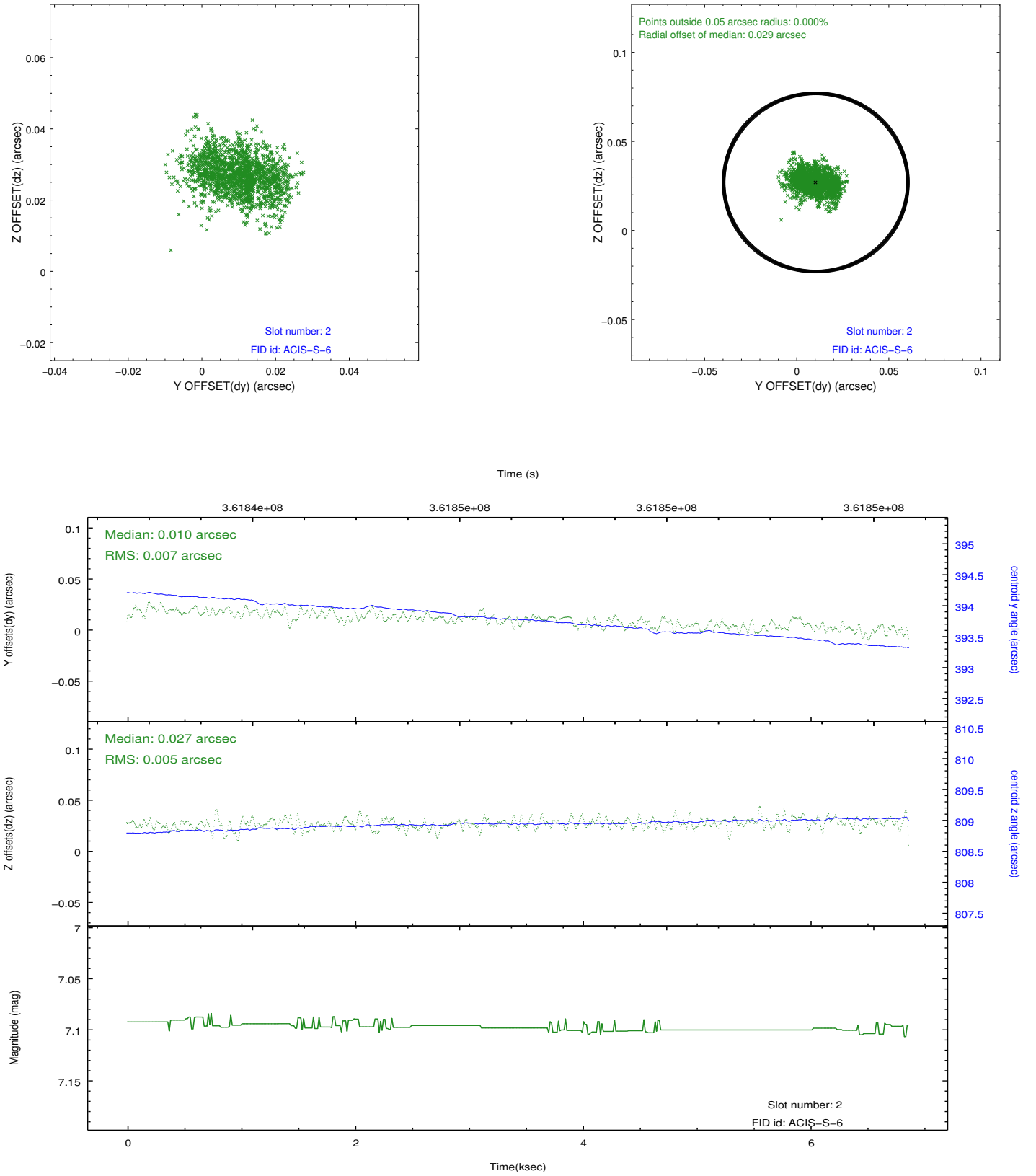
2.5.1 Slot 0



2.5.2 Slot 1



2.5.3 Slot 2



A Summary

A.1 Status

V&V Scientist	Jen Lauer
V&V Date (YYYY-MM-DD)	2012.06.12
V&V Edition	1
V&V Disposition and Status	OK
V&V Charge Time	6.86399997

A.2 Comments