

V&V Reference Report

L2 ASCDS Version : 8.4.4

Observation 10430 - L2 Version 2
Chandra X-Ray Center

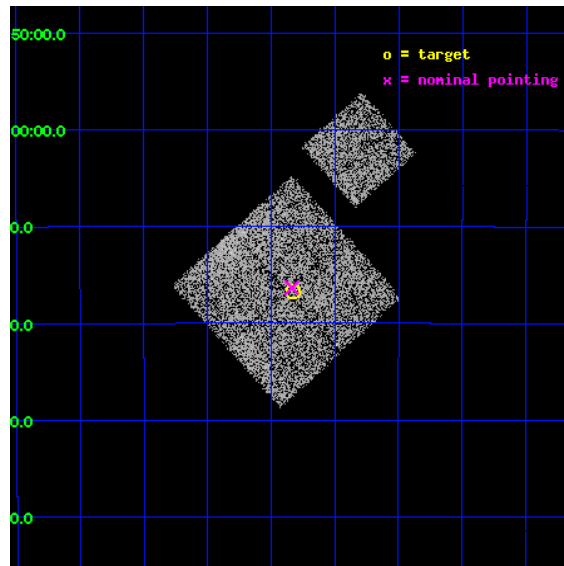
L2 Processing Date : Jun 2 2012

Contents

1	Front	2
2	OBI	3
2.1	OBI	3
2.1.1	Images	3
2.1.2	Bias	3
2.1.3	Parameters	4
2.1.4	Events	4
2.2	Compared Parameters	5
2.3	Aspect	6
2.4	Star Slots	9
2.4.1	Slot 3	9
2.4.2	Slot 4	10
2.4.3	Slot 5	11
2.4.4	Slot 6	12
2.4.5	Slot 7	13
2.5	FID Slots	14
2.5.1	Slot 0	14
2.5.2	Slot 1	15
2.5.3	Slot 2	16
A	Summary	17
A.1	Status	17
A.2	Comments	17

1 Front

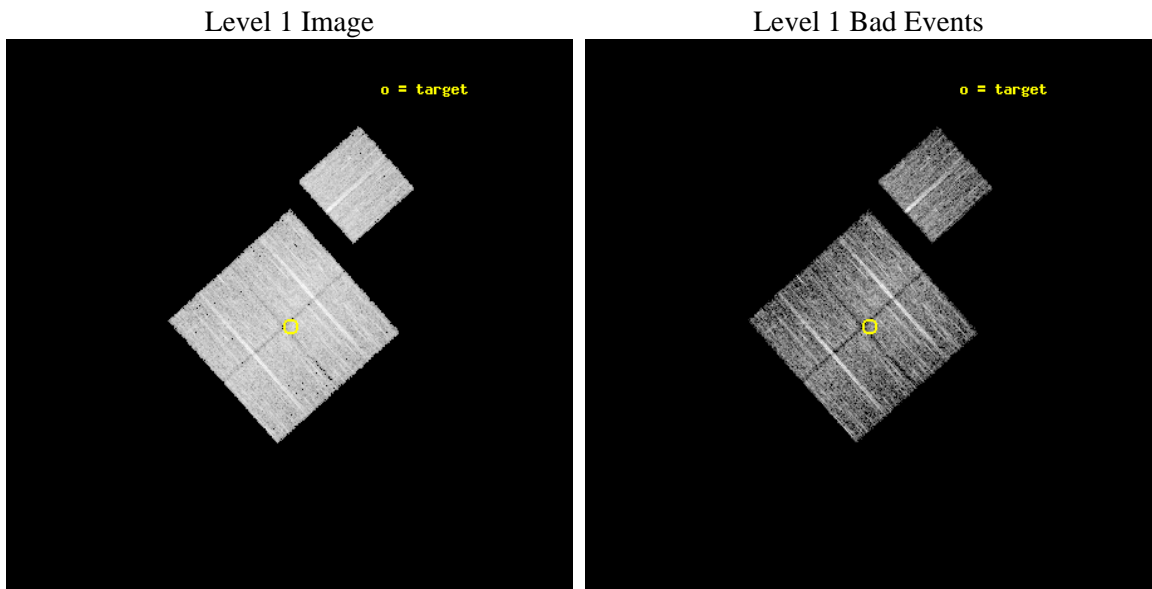
seq_num	800791	Sequence number
obs_id	10430	Observation id
title	A Chandra baseline for galaxy cluster evolution studies	Proposal t
observer	Dr Ben Maughan	Principal investigator
object	A1736	Source name
dtcycle	0	
cycle	P	events from which exps? Prim/Second/Both
ra_targ	201.580679	Observer's specified target RA [deg]
dec_targ	-27.279635	Observer's specified target Dec [deg]
ra_nom	201.58443828007	Nominal RA [deg]
dec_nom	-27.272351086488	Nominal Dec [deg]
roll_nom	48.010430400646	Nominal Roll [deg]
revision	2	Processing version of data
ontime	5042.7290869355	Sum of GTIs [s]
livetime	4976.8421190116	Livetime [s]
ontime0	5042.6059669256	Sum of GTIs [s]
ontime1	5039.50603652	Sum of GTIs [s]
ontime2	5042.6880469322	Sum of GTIs [s]
ontime3	5042.7290869355	Sum of GTIs [s]
ontime6	5042.5649269223	Sum of GTIs [s]
l2events	22085	Number of level 2 events



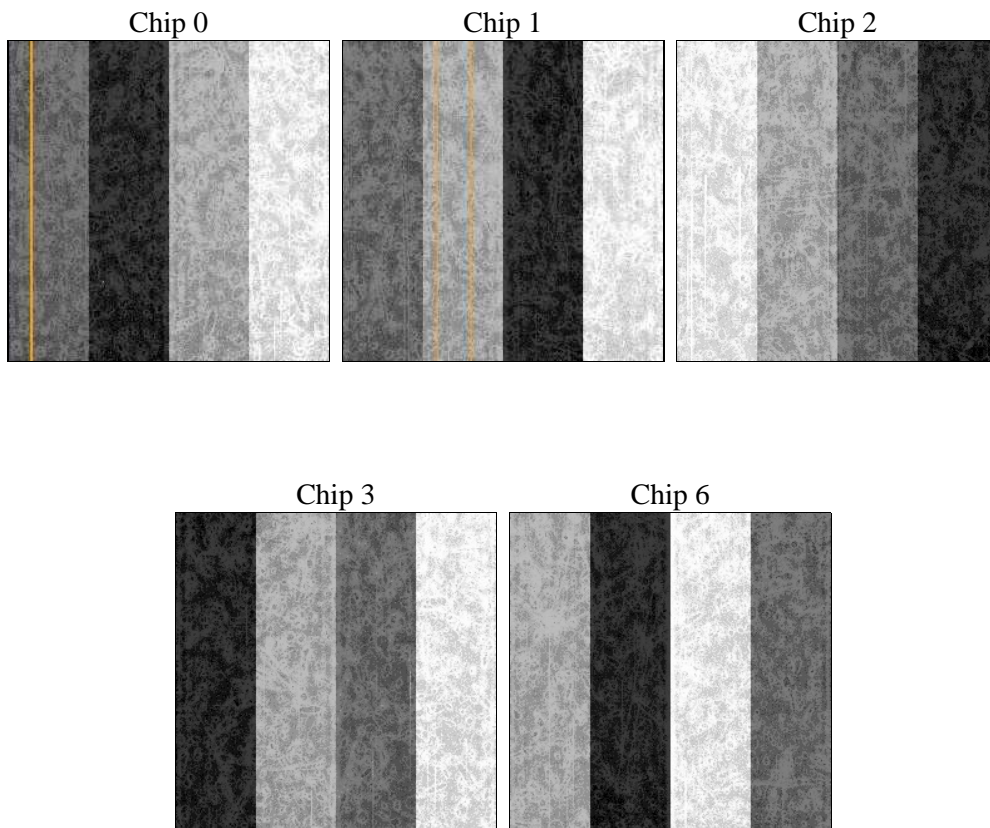
2 OBI

2.1 OBI

2.1.1 Images



2.1.2 Bias



2.1.3 Parameters

obi_num	0	Obi number	sched_exp_time	5000.000000	[s] Scheduled observation exposure time
ascdsver	8.4.4	Processing system revision	ontime	5042.7290869355	Sum of GTIs [s]
caldsver	4.4.9	 	ontime0	5042.6059669256	Sum of GTIs [s]
date	2012-06-02T15:02:12	Date and time of file creation	ontime1	5039.50603652	Sum of GTIs [s]
revision	2	Processing version of data	ontime2	5042.6880469322	Sum of GTIs [s]
			ontime3	5042.7290869355	Sum of GTIs [s]
			ontime6	5042.5649269223	Sum of GTIs [s]
			l1events	219387	Number of level 1 events

2.1.4 Events

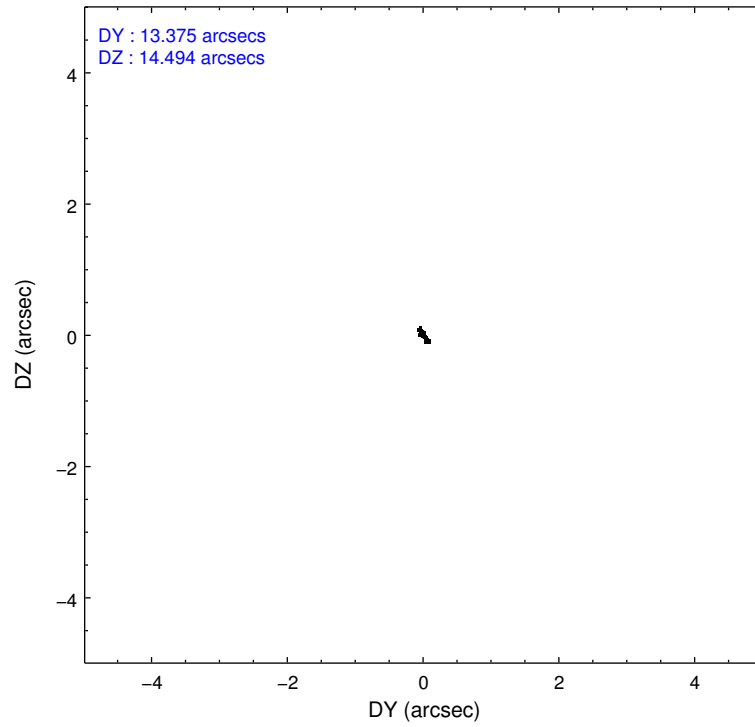
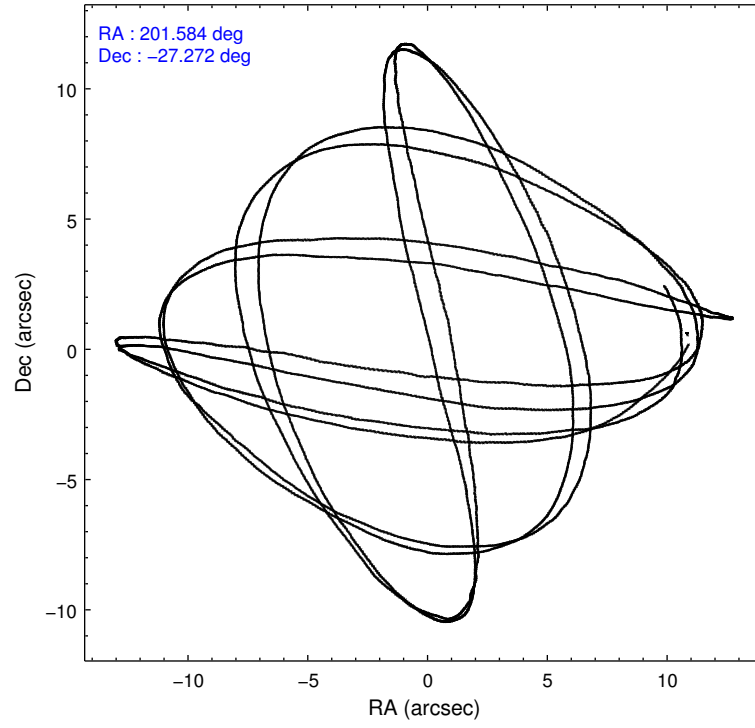
	ccd 0	ccd 1	ccd 2	ccd 3	ccd 6
level 1 events	41874	41495	48541	44095	43382
rejected events	35944	36243	42812	39563	38626
rejected %	85%	87%	88%	89%	89%

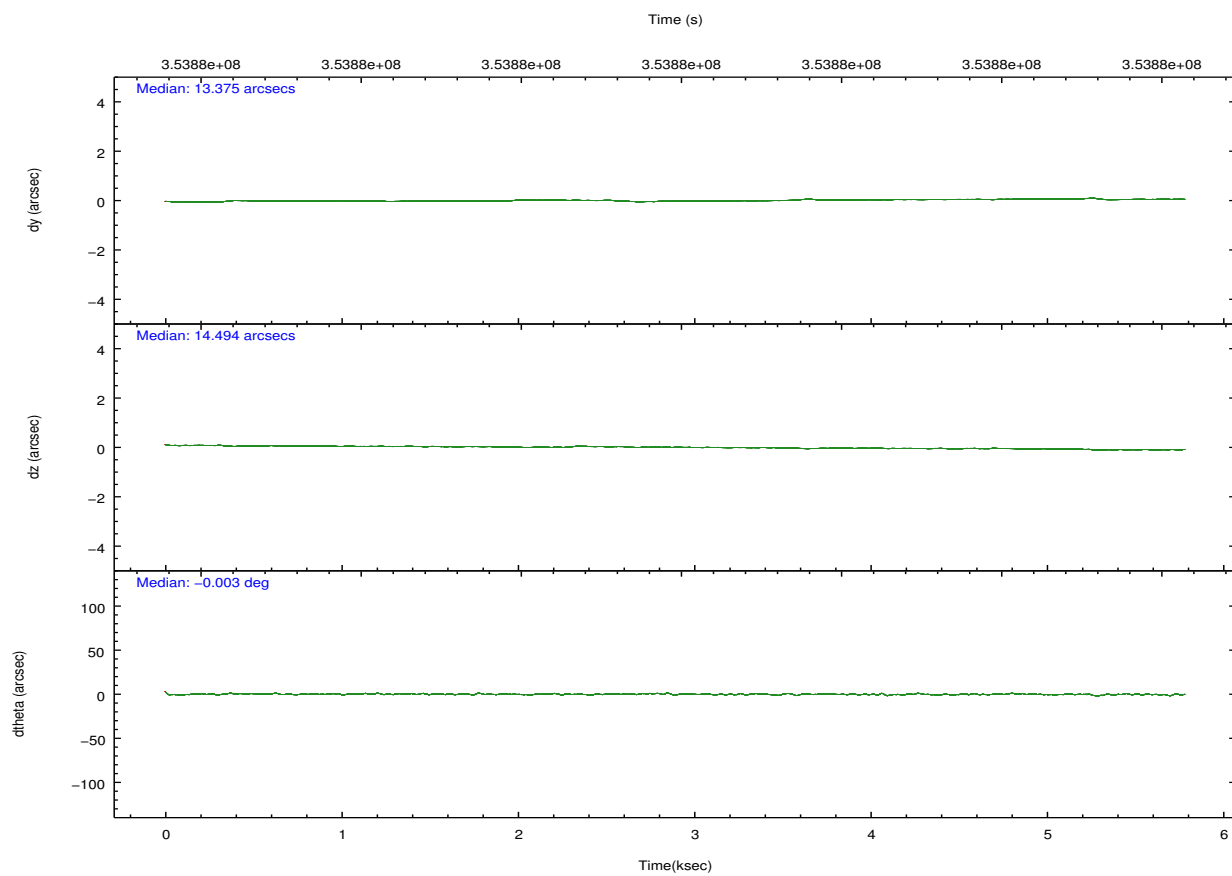
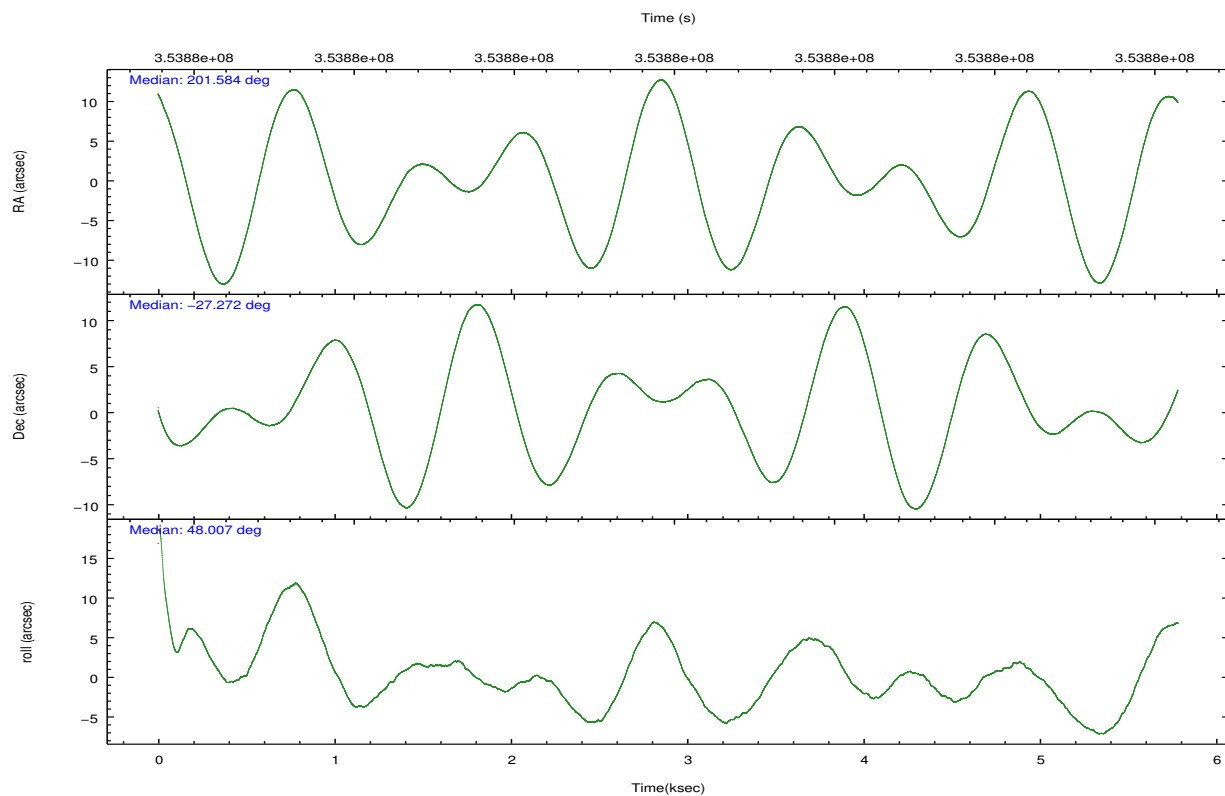
	ccd 0	ccd 1	ccd 2	ccd 3	ccd 6
grade 0 events	2749	2047	2653	1694	1810
	6%	4%	5%	3%	4%
grade 1 events	36	25	26	27	41
	0%	0%	0%	0%	0%
grade 2 events	1261	1146	1253	949	989
	3%	2%	2%	2%	2%
grade 3 events	546	517	461	506	530
	1%	1%	0%	1%	1%
grade 4 events	515	527	514	485	485
	1%	1%	1%	1%	1%
grade 5 events	1528	1772	1540	1788	1759
	3%	4%	3%	4%	4%
grade 6 events	865	1022	853	903	954
	2%	2%	1%	2%	2%
grade 7 events	34374	34439	41241	37743	36814
	82%	82%	84%	85%	84%

2.2 Compared Parameters

Parameter	Planned	Actual	Parameter	Planned	Actual
Instrument	ACIS	ACIS	Obspar format version number	7	7
Detector	ACIS-01236	ACIS-01236	Obspar file type	PREDICTED	ACTUAL
Grating	NONE	NONE	Obspar update status	NONE	UPDATED
Data mode	VFAINT	VFAINT	CCD I0 on	Y	Y
Observation mode	POINTING	POINTING	CCD I1 on	Y	Y
[deg] Pointing RA	201.578174	201.5844382800747	CCD I2 on	Y	Y
[deg] Pointing Dec	-27.299217	-27.27235108648784	CCD I3 on	Y	Y
[deg] Pointing Roll	47.798857	48.01043040064641	CCD S0 on	N	N
[mm] SIM focus pos	-0.782348	-0.7809083437167272	CCD S1 on	N	N
[mm] SIM defocus	0	0.001439871863259334	CCD S2 on	O1	Y
[mm] SIM translation stage pos	-233.592463	-233.5874344608287	CCD S3 on	N	N
[mm] SIM translation stage offset	0	-0.005018542100998502	CCD S4 on	N	N
[s] Observation start time (MET)	353876844.184000	353875615.85581	CCD S5 on	N	N
Observation start date	2009-03-19T19:06:18	2009-03-19T18:46:55	Number of optional ACIS chips dropped	0	0
[s] Observation end time (MET)	353881844.184000	353881978.54363	On-chip summing requested	N	N
Observation end date	2009-03-19T20:29:38	2009-03-19T20:32:58	Subarray requested	NONE	NONE
Read mode	TIMED	TIMED	Alternating exposures requested	N	N
			[s] Primary exposure time	0.000000	3.1

2.3 Aspect



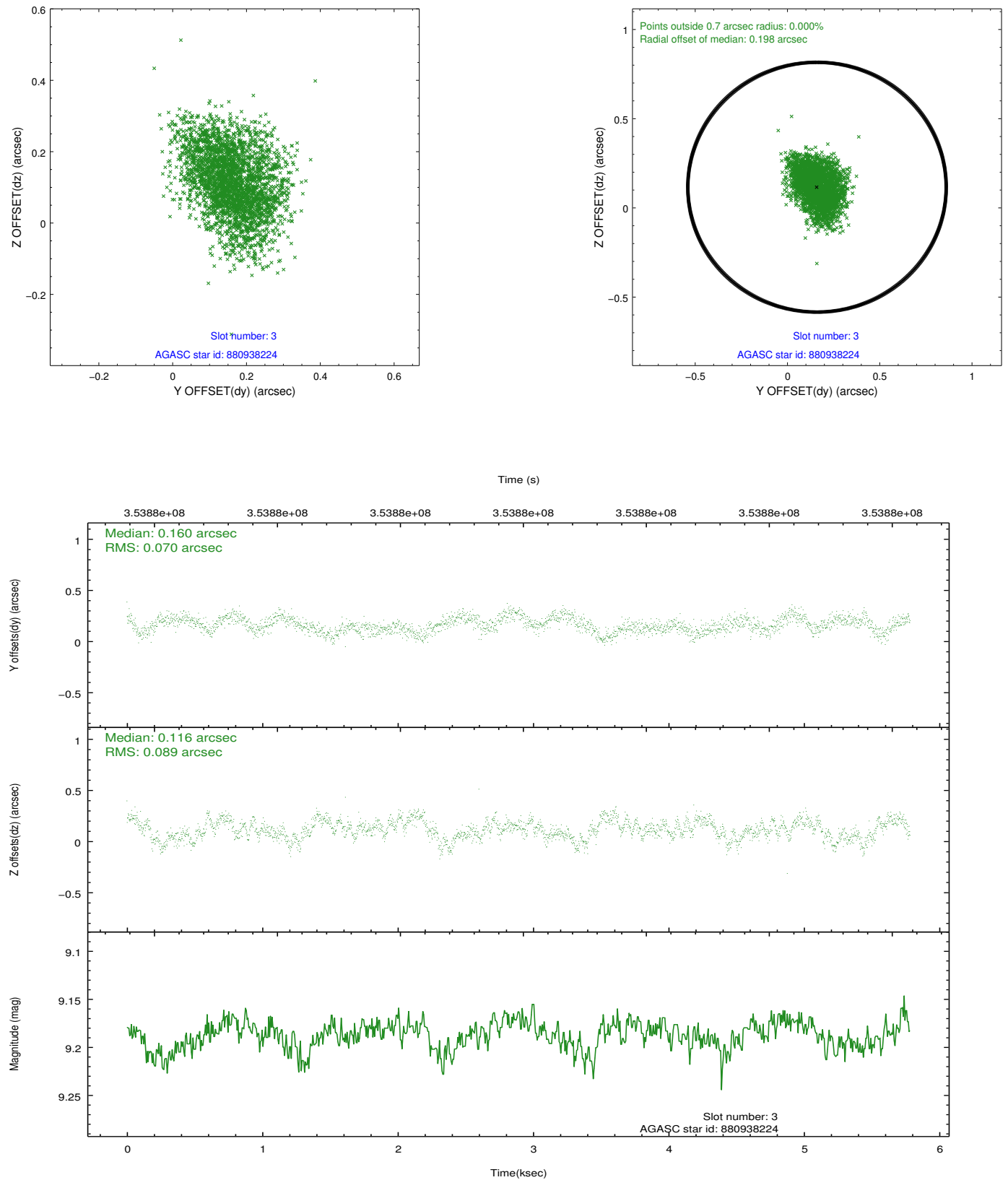


Slot Statistics

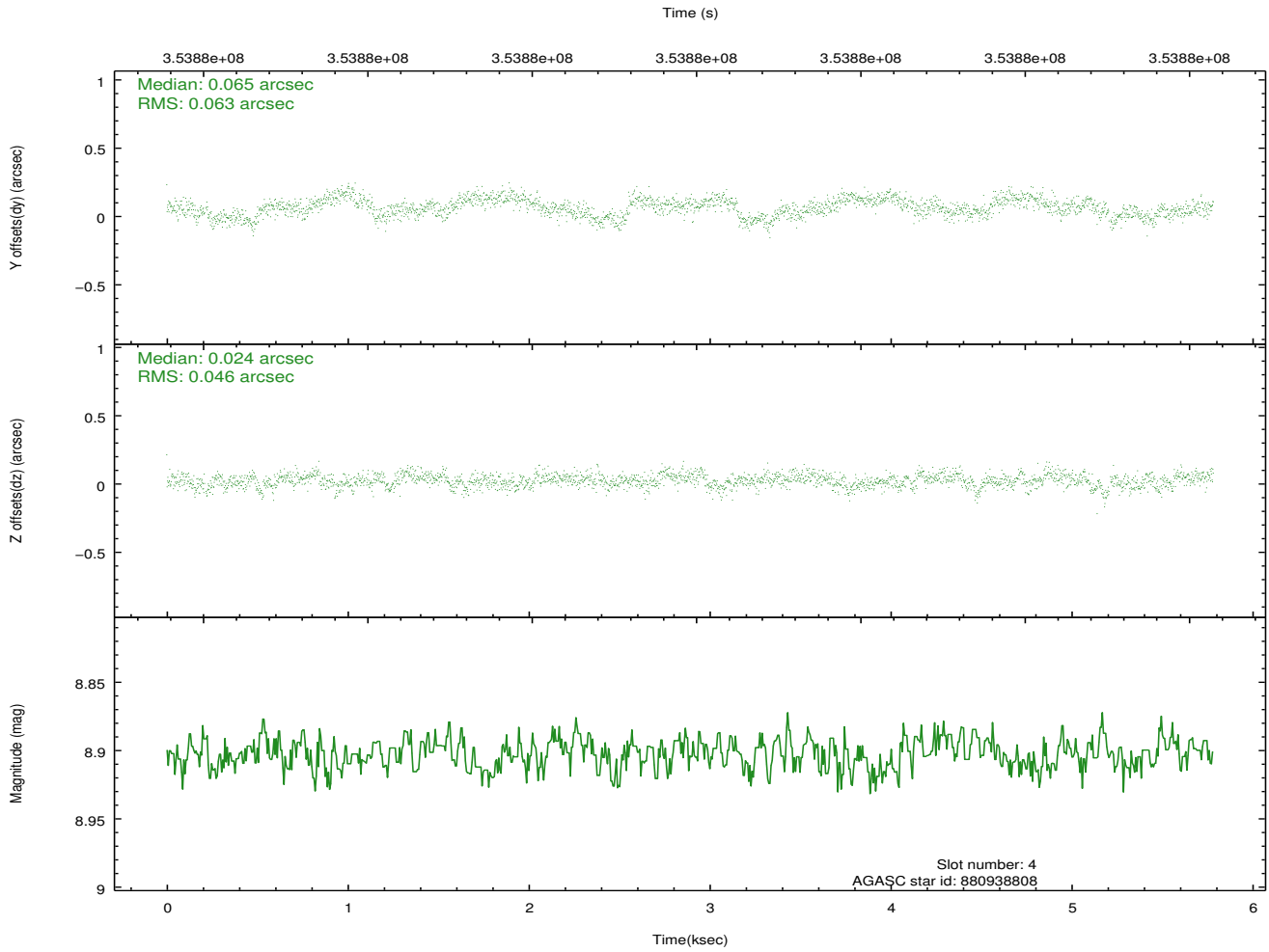
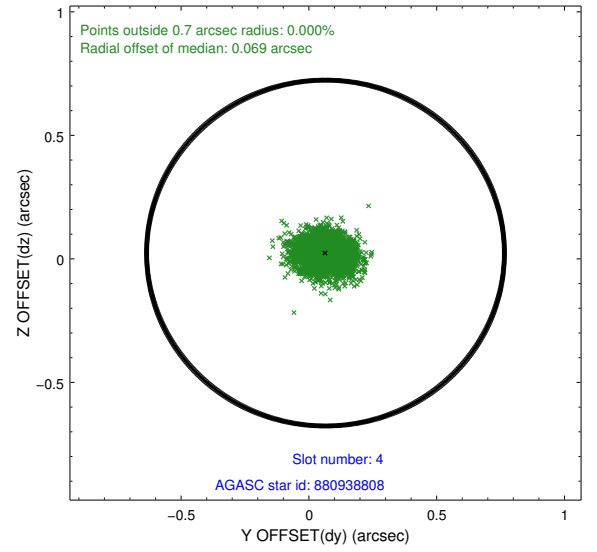
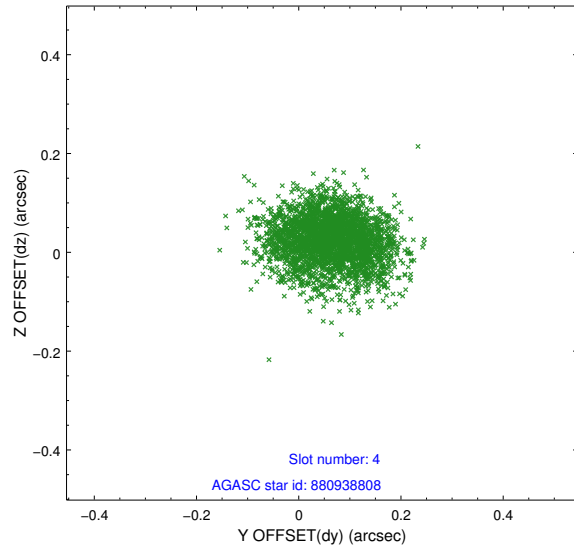
slot	status	id	mag	n_pts	med_dy	med_dz	dr1	dr2	ra	dec	mean_y	mean_z
0	FID	ACIS-I-1	7.04	1411	-0.011	0.011	0.008	0.014	0.000000	0.000000	926.12	-838.05
1	FID	ACIS-I-4	6.96	1411	0.184	0.022	0.007	0.012	0.000000	0.000000	2146.91	1061.26
2	FID	ACIS-I-5	7.03	1411	-0.271	0.038	0.006	0.012	0.000000	0.000000	-1820.83	1060.26
3	GUIDE	880938224	9.19	2819	0.160	0.116	0.123	0.194	201.238253	-27.148228	-329.36	1171.01
4	GUIDE	880938808	8.90	2806	0.065	0.024	0.084	0.132	201.379902	-27.218141	-210.42	666.55
5	GUIDE	880943920	8.92	2822	0.035	-0.215	0.082	0.128	201.335153	-27.473794	-987.16	152.44
6	GUIDE	880945376	8.01	2822	-0.192	-0.148	0.053	0.087	201.527731	-26.606601	1737.30	1795.35
7	GUIDE	880939792	9.74	2813	-0.068	0.220	0.128	0.213	202.282991	-27.623783	641.01	-2453.51

2.4 Star Slots

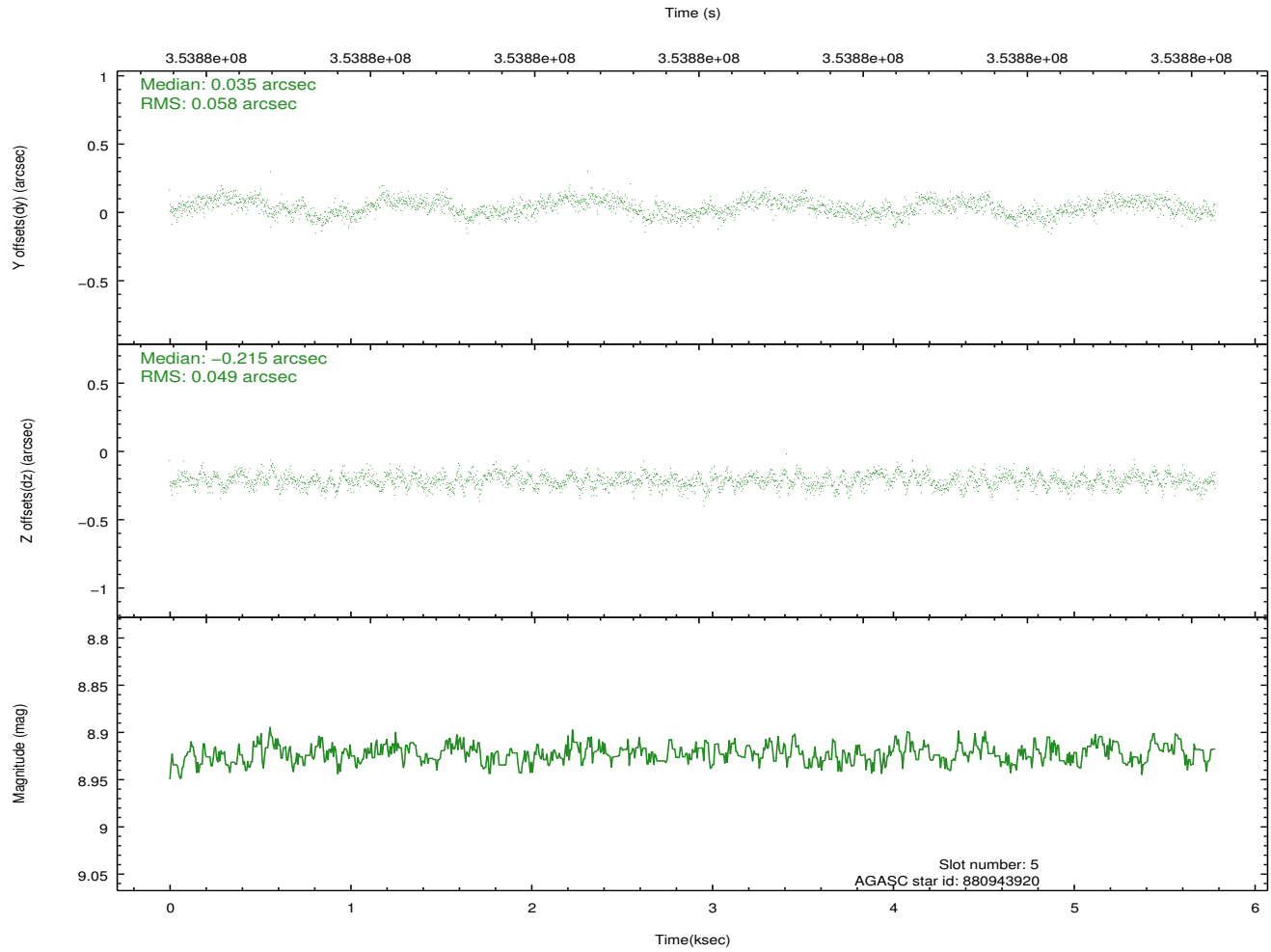
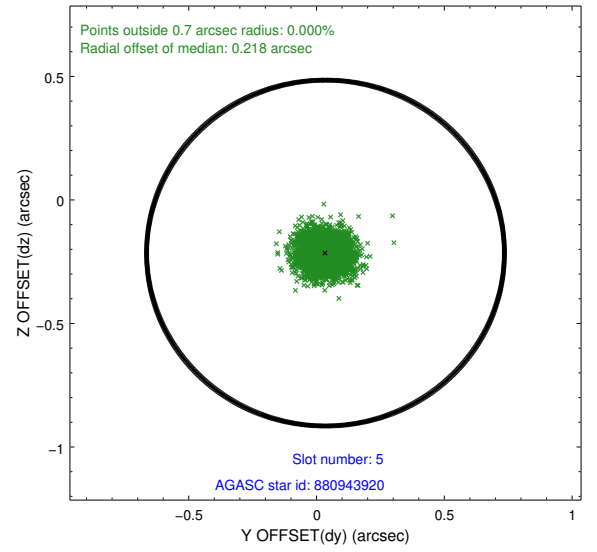
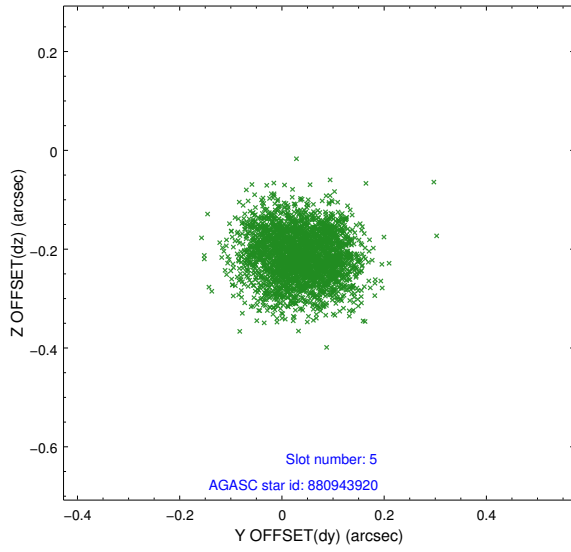
2.4.1 Slot 3



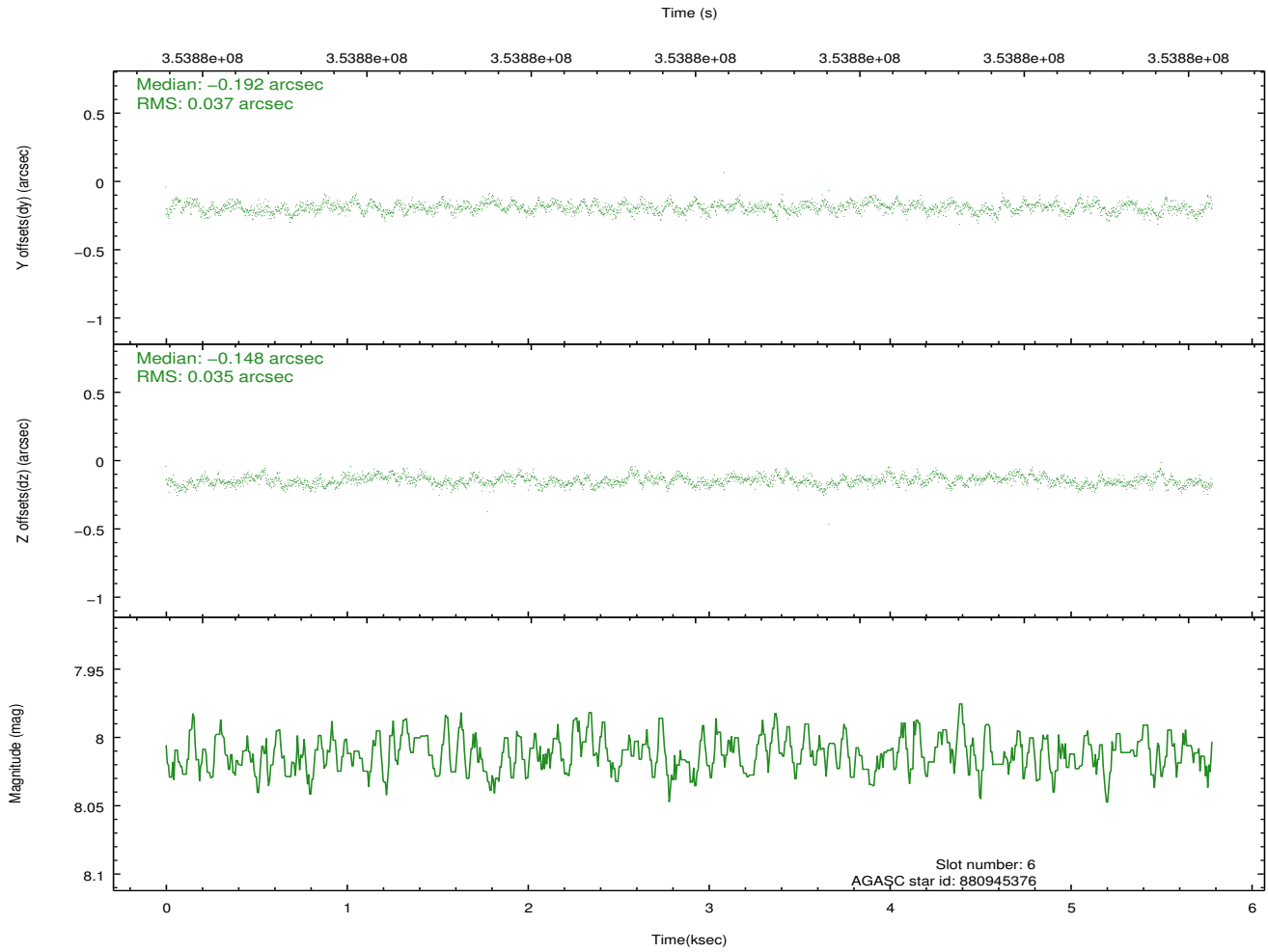
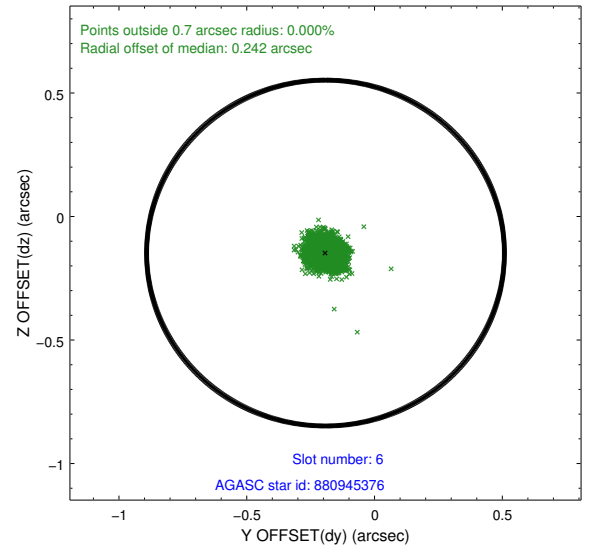
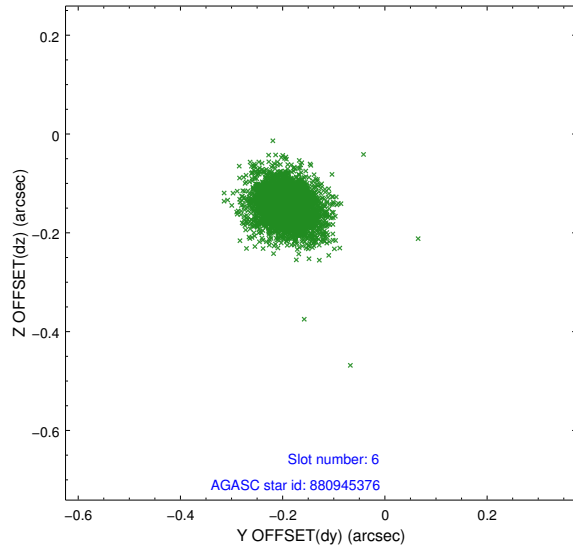
2.4.2 Slot 4



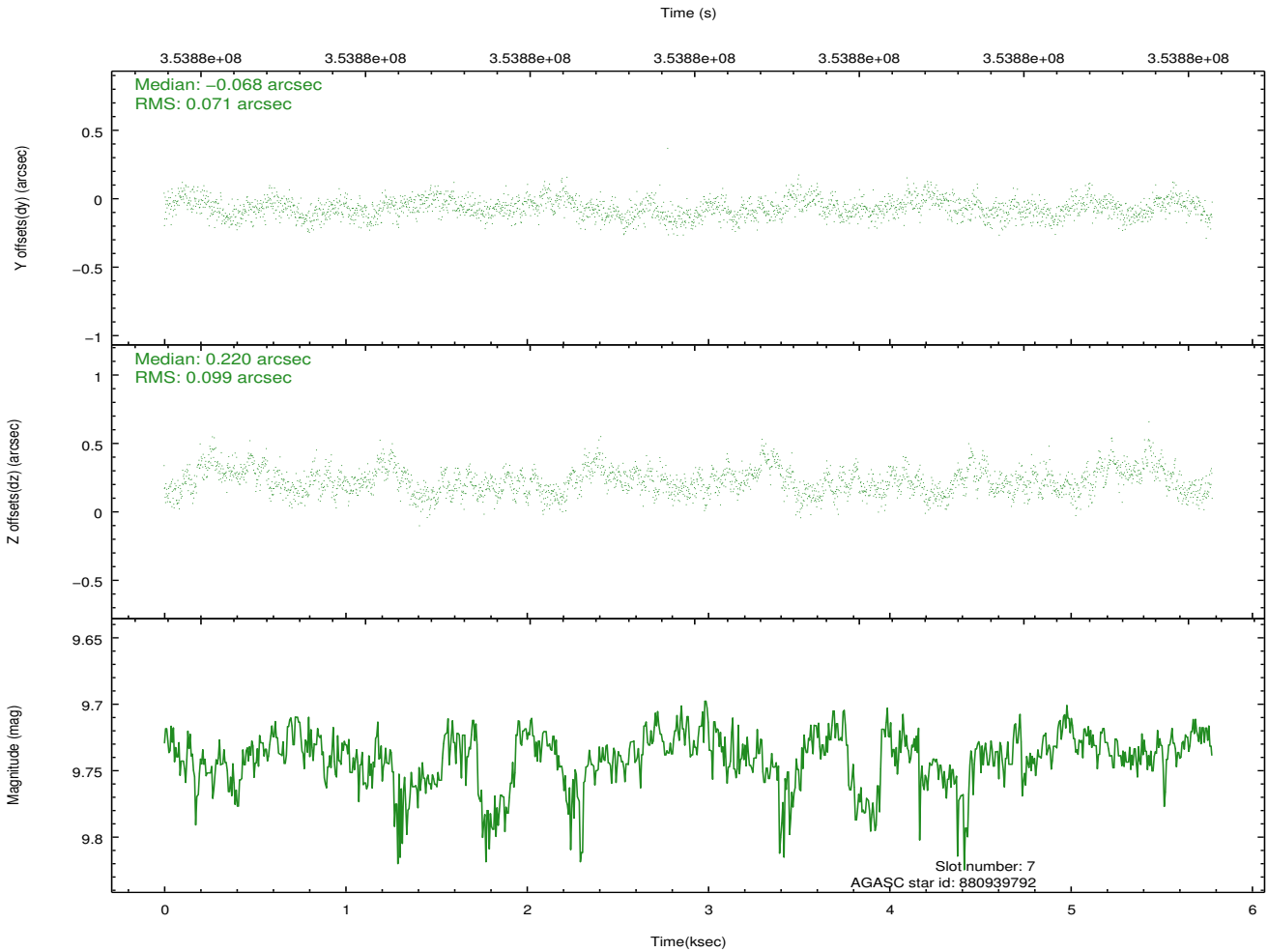
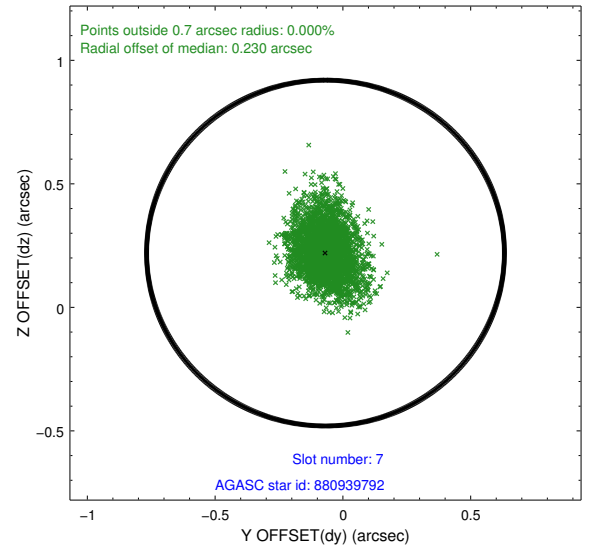
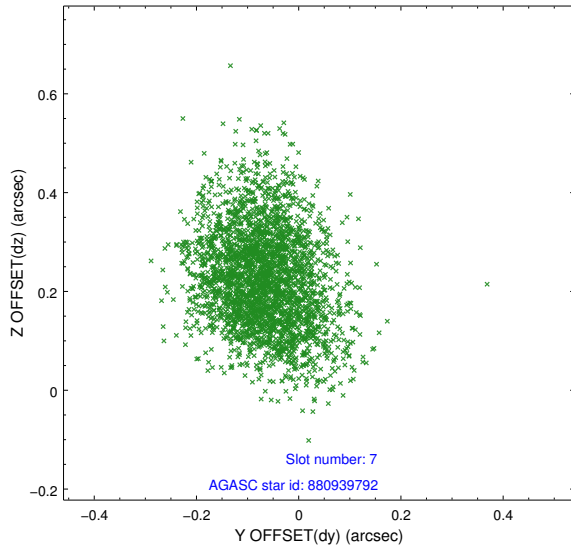
2.4.3 Slot 5



2.4.4 Slot 6

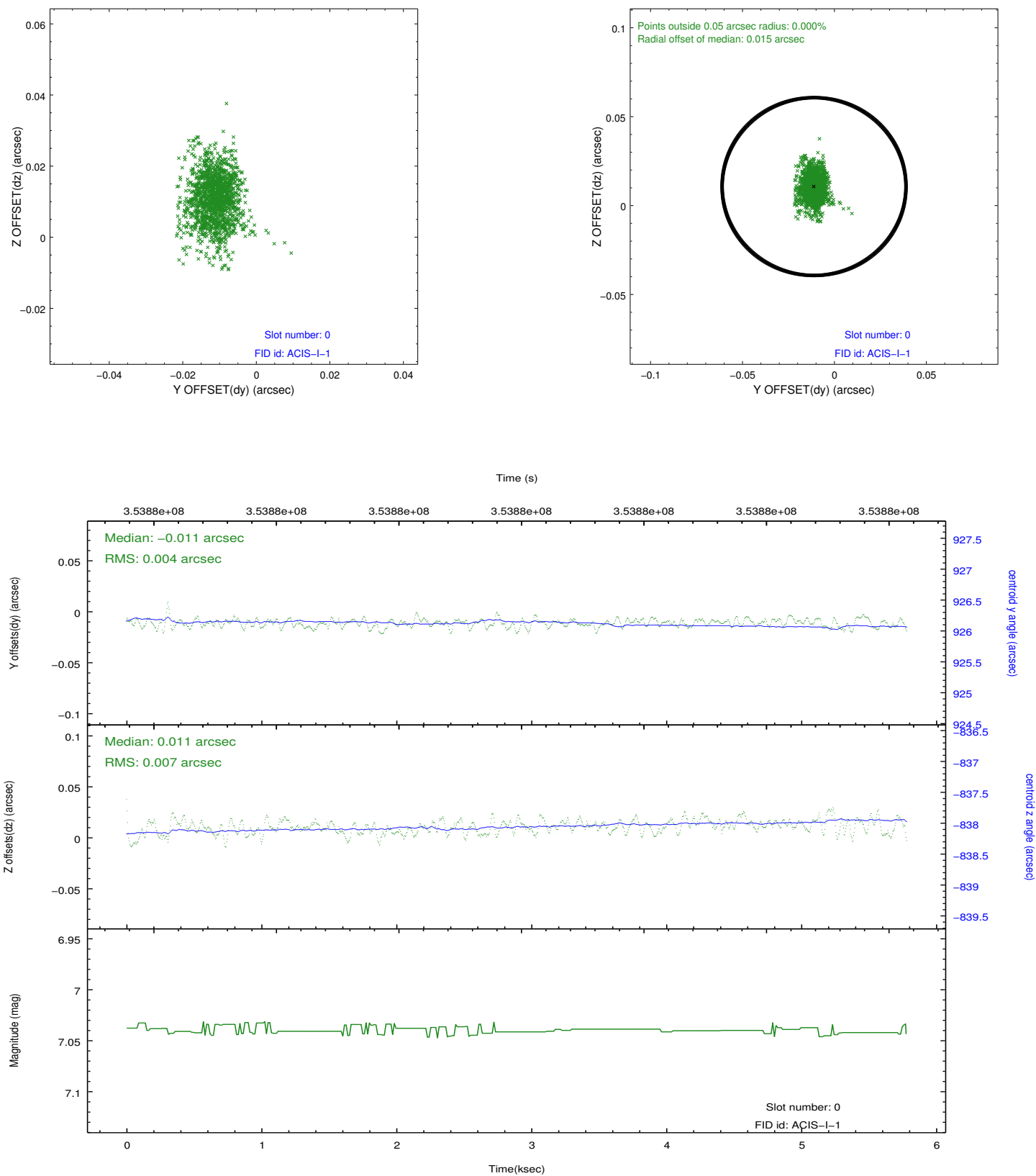


2.4.5 Slot 7

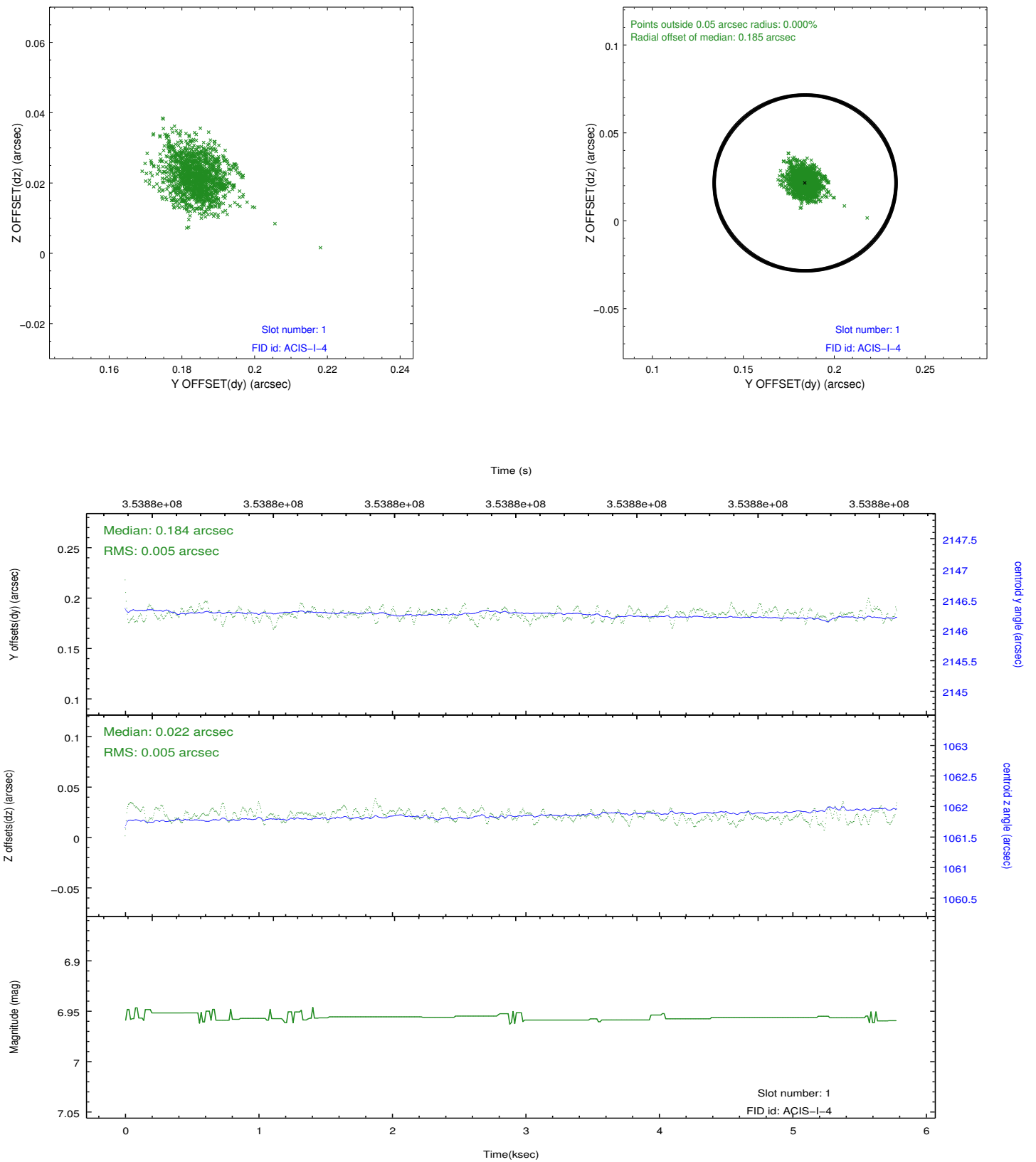


2.5 FID Slots

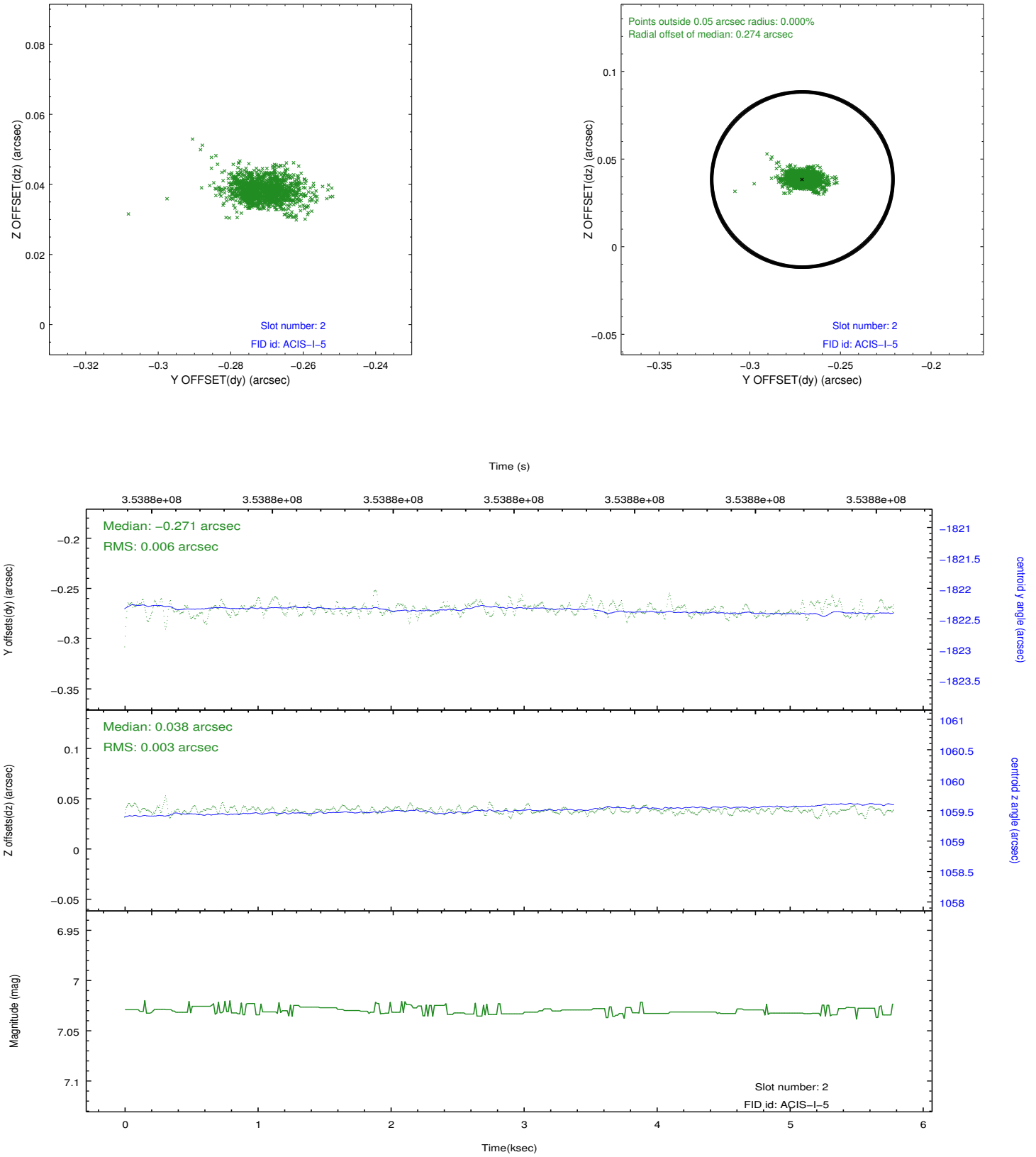
2.5.1 Slot 0



2.5.2 Slot 1



2.5.3 Slot 2



A Summary

A.1 Status

V&V Scientist	Joy Nichols
V&V Date (YYYY-MM-DD)	2012.06.07
V&V Edition	1
V&V Disposition and Status	OK
V&V Charge Time	5.04370003

A.2 Comments