

V&V Reference Report

L2 ASCDS Version : 8.4.4

Observation 10140 - L2 Version 2
Chandra X-Ray Center

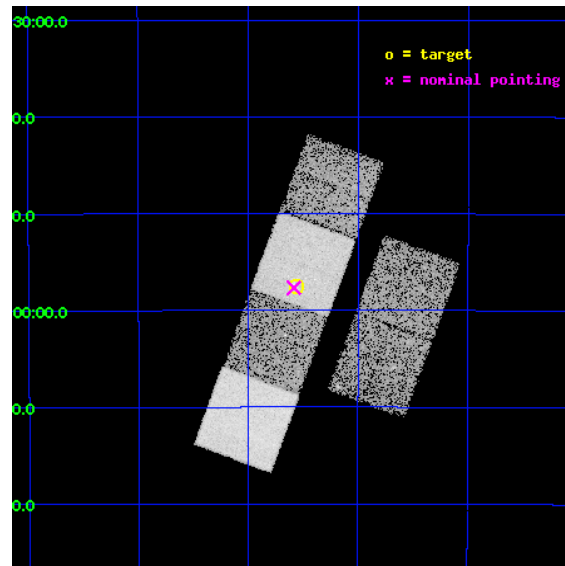
L2 Processing Date : Jun 4 2012

Contents

1	Front	2
2	OBI	3
2.1	OBI	3
2.1.1	Images	3
2.1.2	Bias	3
2.1.3	Parameters	4
2.1.4	Events	4
2.2	Compared Parameters	5
2.3	Aspect	6
2.4	Star Slots	9
2.4.1	Slot 3	9
2.4.2	Slot 4	10
2.4.3	Slot 5	11
2.4.4	Slot 6	12
2.4.5	Slot 7	13
2.5	FID Slots	14
2.5.1	Slot 0	14
2.5.2	Slot 1	15
2.5.3	Slot 2	16
A	Summary	17
A.1	Status	17
A.2	Comments	17

1 Front

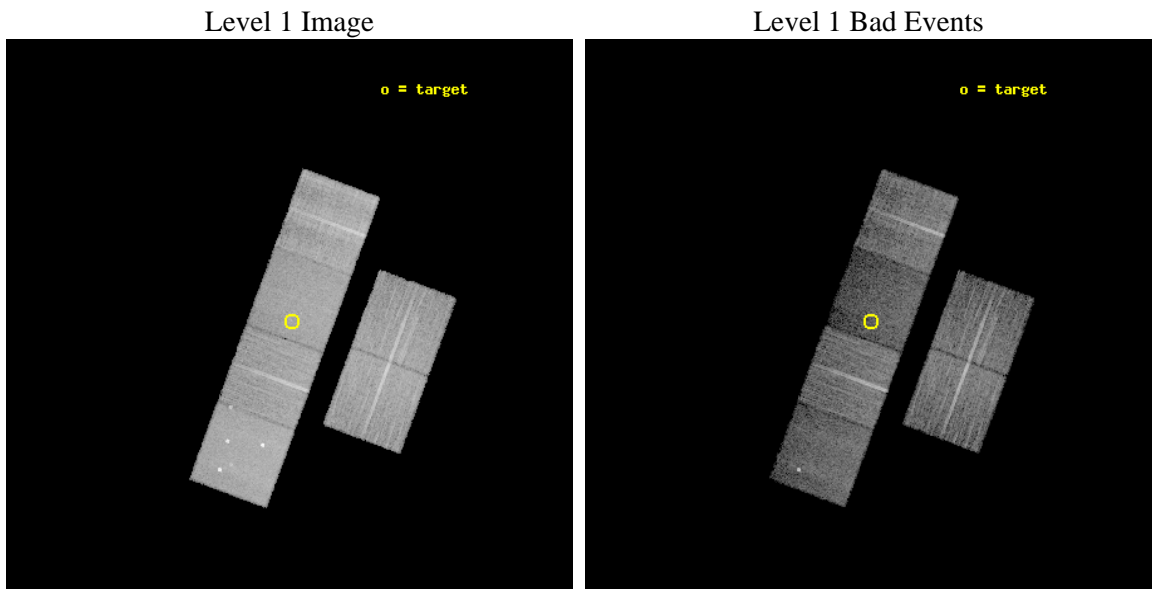
seq_num	501067	Sequence number
obs_id	10140	Observation id
title	The Energetics and Environments of 'Naked' Supernovae	Proposal t
observer	Prof Alicia Soderberg	Principal investigator
object	SN2009bb	Source name
dtcycle	0	
cycle	P	events from which exps? Prim/Second/Both
ra_targ	157.891125	Observer's specified target RA [deg]
dec_targ	-39.958347	Observer's specified target Dec [deg]
ra_nom	157.89609938999	Nominal RA [deg]
dec_nom	-39.961302081658	Nominal Dec [deg]
roll_nom	290.31251053237	Nominal Roll [deg]
revision	2	Processing version of data
ontime	10037.721222818	Sum of GTIs [s]
livetime	9910.6175527045	Livetime [s]
ontime2	10037.762262821	Sum of GTIs [s]
ontime3	10034.357082486	Sum of GTIs [s]
ontime5	10037.680182815	Sum of GTIs [s]
ontime6	10037.639142811	Sum of GTIs [s]
ontime7	10037.721222818	Sum of GTIs [s]
ontime8	10037.557062805	Sum of GTIs [s]
l2events	116675	Number of level 2 events



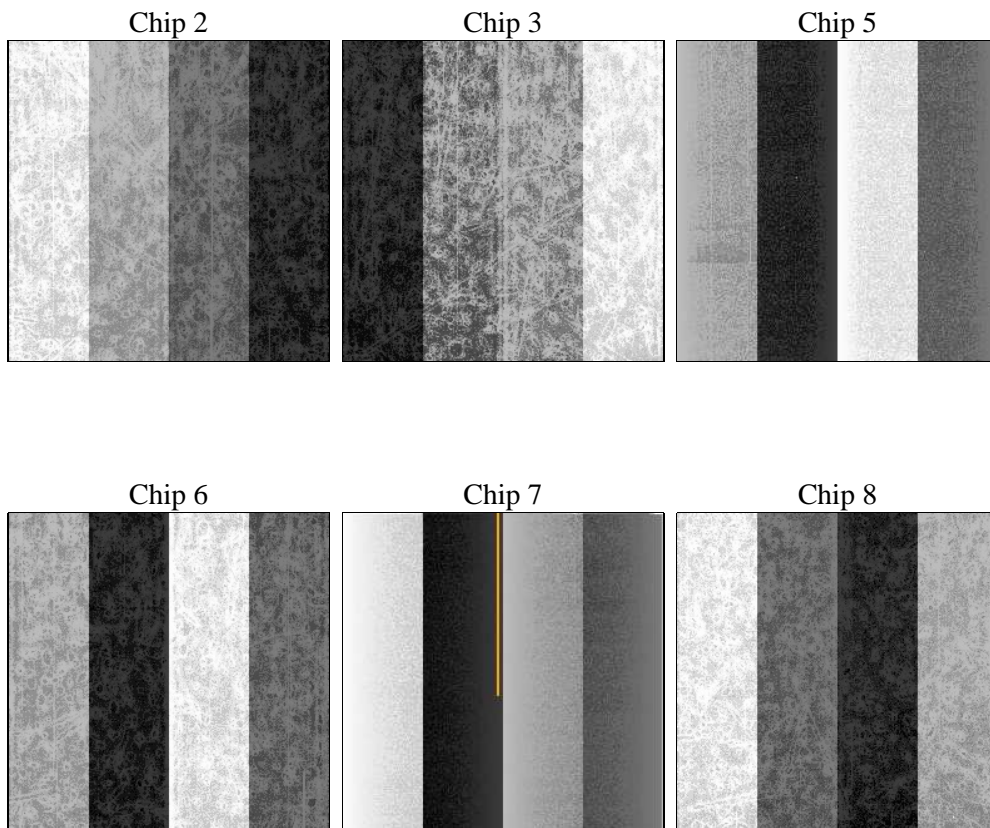
2 OBI

2.1 OBI

2.1.1 Images



2.1.2 Bias



2.1.3 Parameters

obi_num	0	Obi number	sched_exp_time	10000.000000	[s] Scheduled observation exposure time
ascdsver	8.4.4	Processing system revision	ontime	10037.721222818	Sum of GTIs [s]
caldbver	4.4.9	 	ontime2	10037.762262821	Sum of GTIs [s]
date	2012-06-04T14:55:06	Date and time of file creation	ontime3	10034.357082486	Sum of GTIs [s]
revision	2	Processing version of data	ontime5	10037.680182815	Sum of GTIs [s]
			ontime6	10037.639142811	Sum of GTIs [s]
			ontime7	10037.721222818	Sum of GTIs [s]
			ontime8	10037.557062805	Sum of GTIs [s]
			l1events	526616	Number of level 1 events

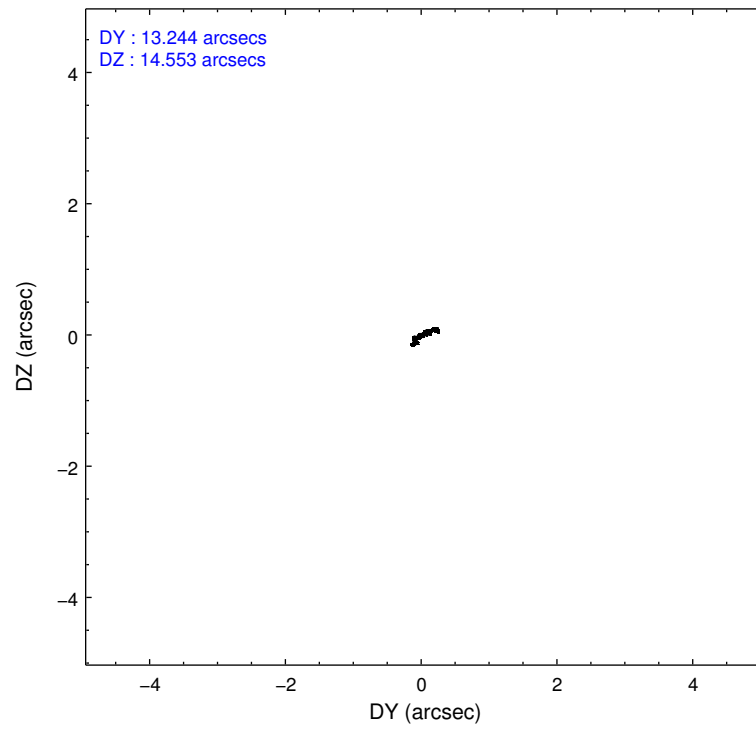
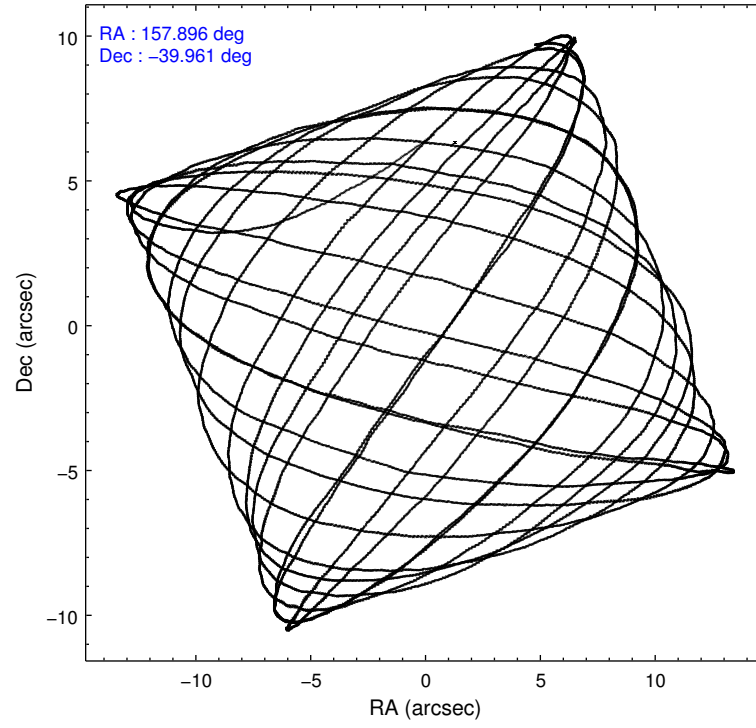
2.1.4 Events

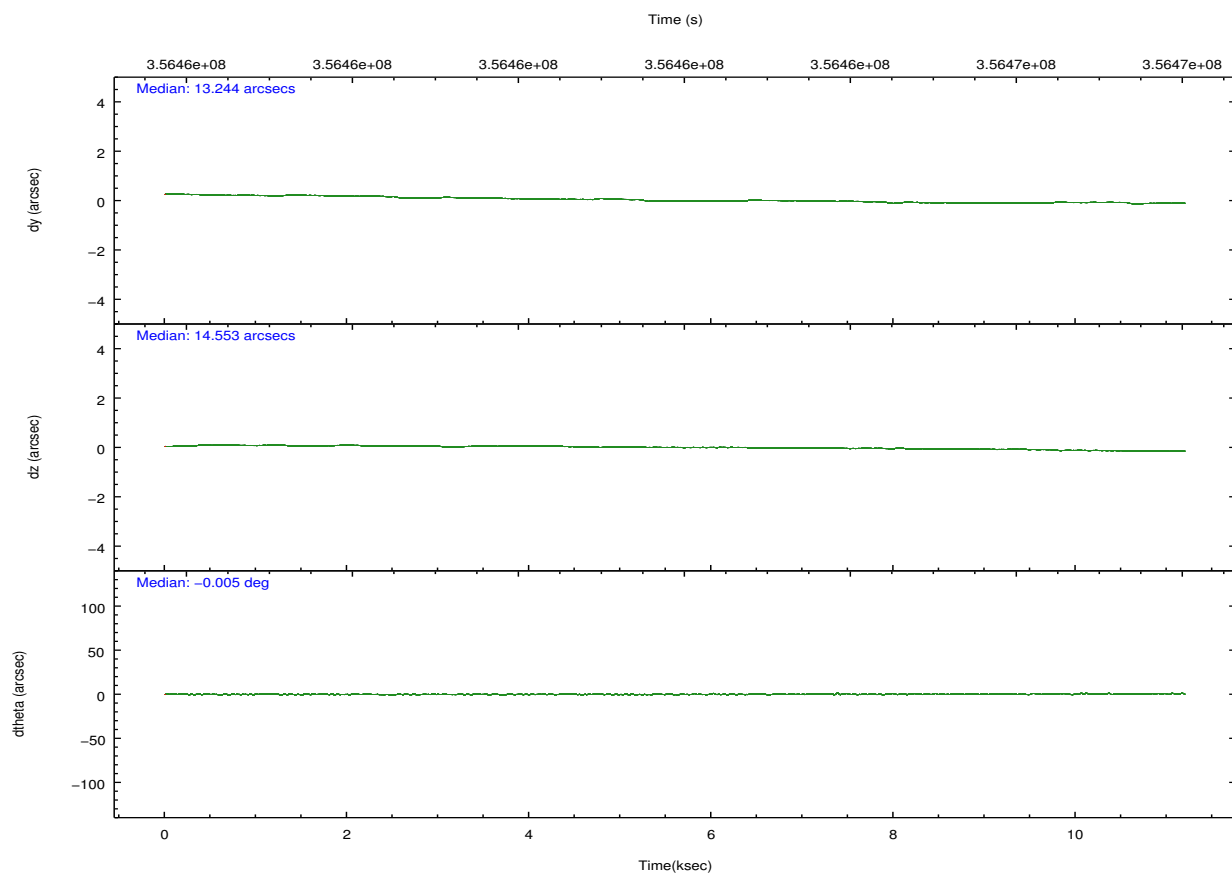
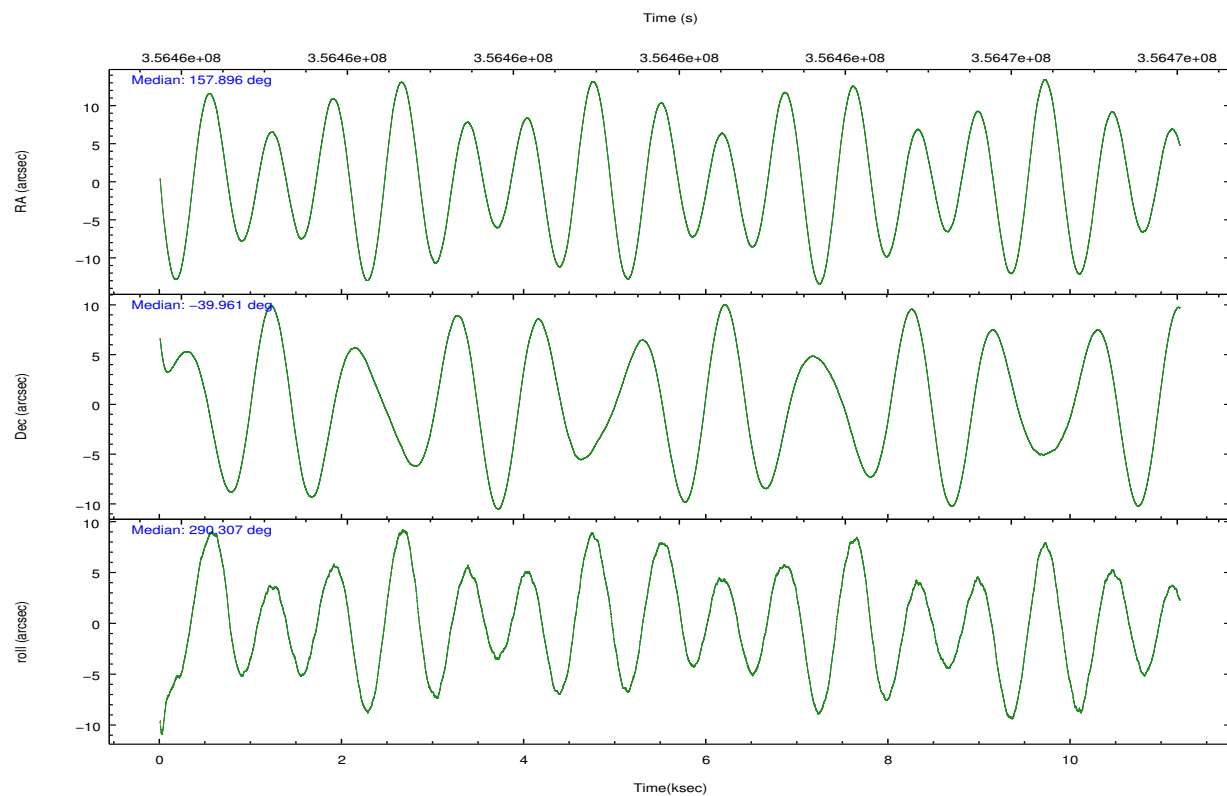
	ccd 2	ccd 3	ccd 5	ccd 6	ccd 7	ccd 8		ccd 2	ccd 3	ccd 5	ccd 6	ccd 7	ccd 8
level 1 events	84866	74774	106553	81599	78975	99849	grade 0 events	2976	2755	7602	3010	4114	6943
rejected events	76924	67298	49179	73200	39855	74667		3%	3%	7%	3%	5%	6%
rejected %	90%	90%	46%	89%	50%	74%	grade 1 events	69	42	209	43	139	93
								0%	0%	0%	0%	0%	0%
							grade 2 events	1942	1694	18037	1895	8309	6022
								2%	2%	16%	2%	10%	6%
							grade 3 events	794	820	2325	911	3715	2768
								0%	1%	2%	1%	4%	2%
							grade 4 events	795	793	2173	892	3521	2566
								0%	1%	2%	1%	4%	2%
							grade 5 events	2360	2780	8673	2768	8344	4311
								2%	3%	8%	3%	10%	4%
							grade 6 events	1444	1416	27269	1694	19484	6896
								1%	1%	25%	2%	24%	6%
							grade 7 events	74486	64474	40265	70386	31349	70250
								87%	86%	37%	86%	39%	70%

2.2 Compared Parameters

Parameter	Planned	Actual	Parameter	Planned	Actual
Instrument	ACIS	ACIS	Obspar format version number	7	7
Detector	ACIS-235678	ACIS-235678	Obspar file type	PREDICTED	ACTUAL
Grating	NONE	NONE	Obspar update status	NONE	UPDATED
Data mode	VFAINT	VFAINT	CCD I0 on	N	N
Observation mode	POINTING	POINTING	CCD I1 on	N	N
[deg] Pointing RA	157.868352	157.8960993899926	CCD I2 on	O1	Y
[deg] Pointing Dec	-39.944155	-39.96130208165784	CCD I3 on	O2	Y
[deg] Pointing Roll	290.138072	290.3125105323663	CCD S0 on	N	N
[mm] SIM focus pos	-0.684267	-0.6828225247311905	CCD S1 on	Y	Y
[mm] SIM defocus	0	0.001444936568705701	CCD S2 on	Y	Y
[mm] SIM translation stage pos	-190.132523	-190.1400660498719	CCD S3 on	Y	Y
[mm] SIM translation stage offset	0	0.00754346686406393	CCD S4 on	Y	Y
[s] Observation start time (MET)	356457494.184000	356455663.98414	CCD S5 on	N	N
Observation start date	2009-04-18T15:57:08	2009-04-18T15:27:43	Number of optional ACIS chips dropped	0	0
[s] Observation end time (MET)	356467494.184000	356468379.10978	On-chip summing requested	N	N
Observation end date	2009-04-18T18:43:48	2009-04-18T18:59:39	Subarray requested	NONE	NONE
Read mode	TIMED	TIMED	Alternating exposures requested	N	N
			[s] Primary exposure time	0.000000	3.2

2.3 Aspect



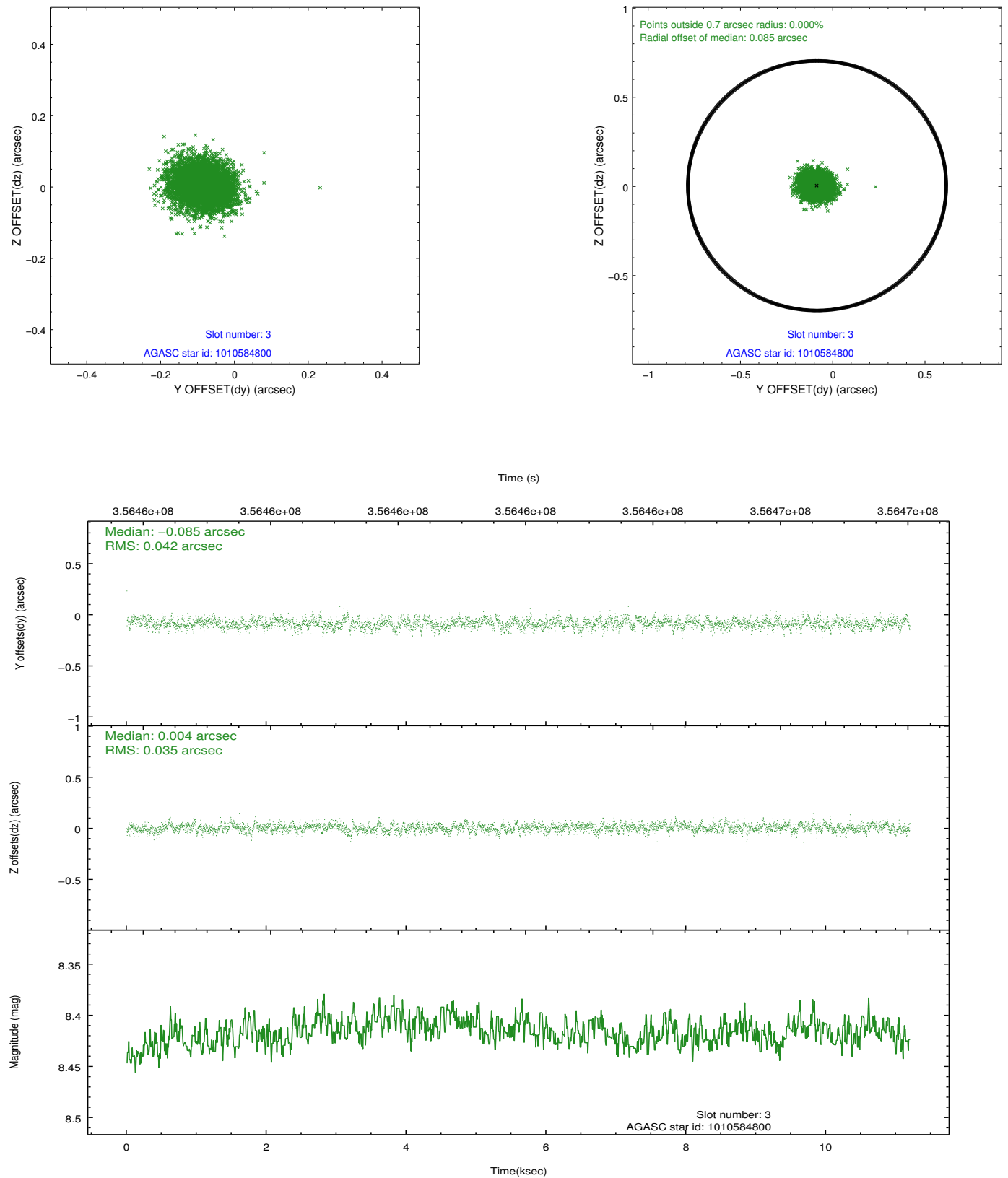


Slot Statistics

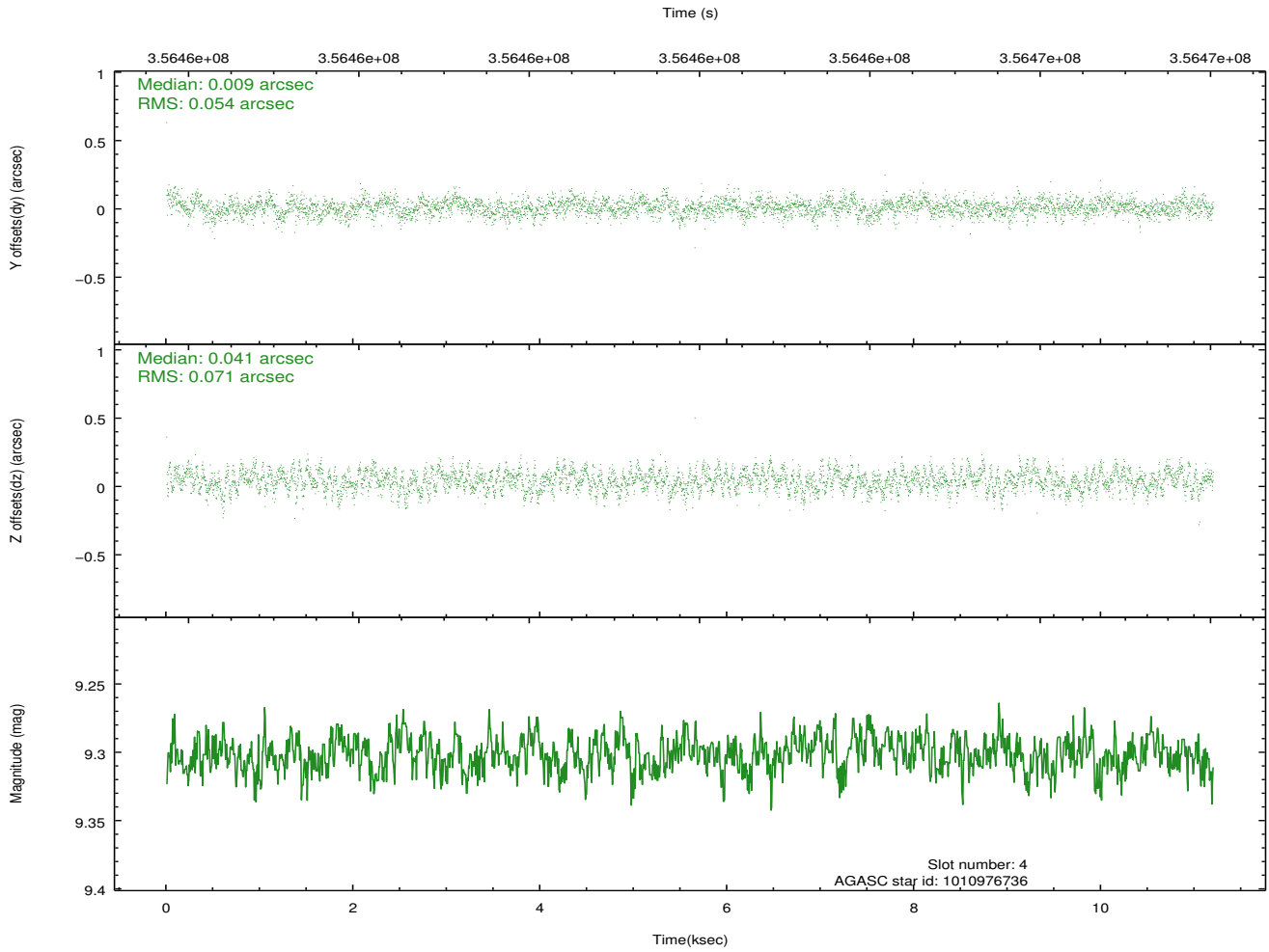
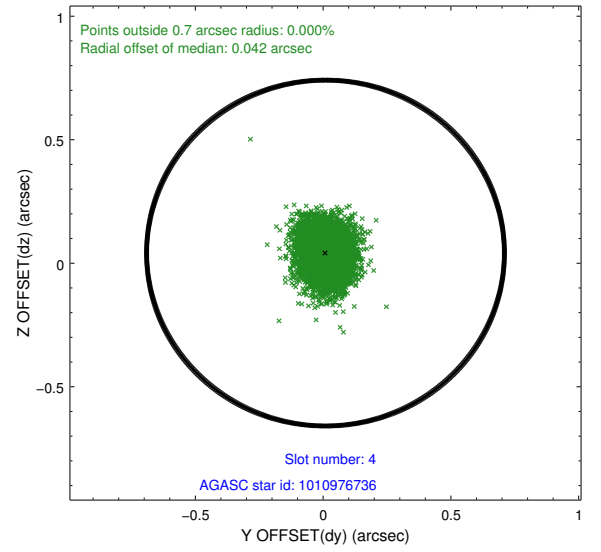
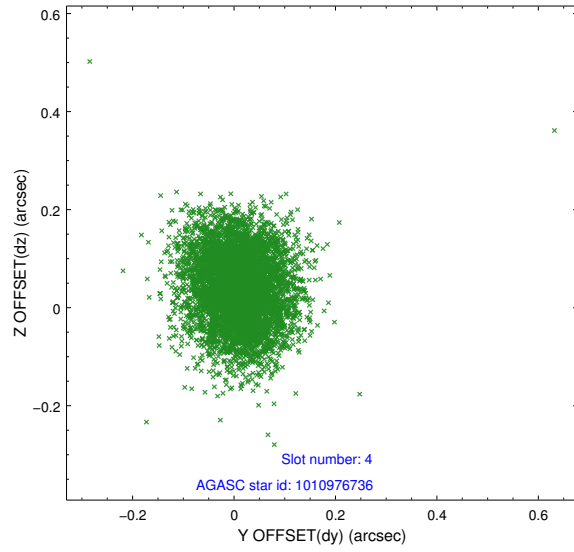
slot	status	id	mag	n_pts	med_dy	med_dz	dr1	dr2	ra	dec	mean_y	mean_z
0	FID	ACIS-S-2	6.88	2732	-0.052	-0.027	0.009	0.014	0.000000	0.000000	-766.23	-1735.95
1	FID	ACIS-S-4	6.96	2732	0.172	0.032	0.015	0.023	0.000000	0.000000	2147.04	172.16
2	FID	ACIS-S-5	7.00	2732	-0.152	0.003	0.009	0.015	0.000000	0.000000	-1818.61	166.27
3	GUIDE	1010584800	8.42	5462	-0.085	0.004	0.058	0.095	157.783346	-39.339835	-2123.80	526.55
4	GUIDE	1010976736	9.30	5460	0.009	0.041	0.095	0.153	157.217326	-40.251556	429.45	-2062.54
5	GUIDE	1011105208	9.26	5454	0.014	0.023	0.094	0.150	158.504862	-39.405441	-1205.11	2327.46
6	GUIDE	1011105384	6.63	5463	-0.014	-0.059	0.070	0.111	158.379693	-40.238438	1482.64	953.91
7	GUIDE	1011103360	9.24	5455	0.081	-0.013	0.101	0.162	157.826625	-40.671990	2421.71	-1008.63

2.4 Star Slots

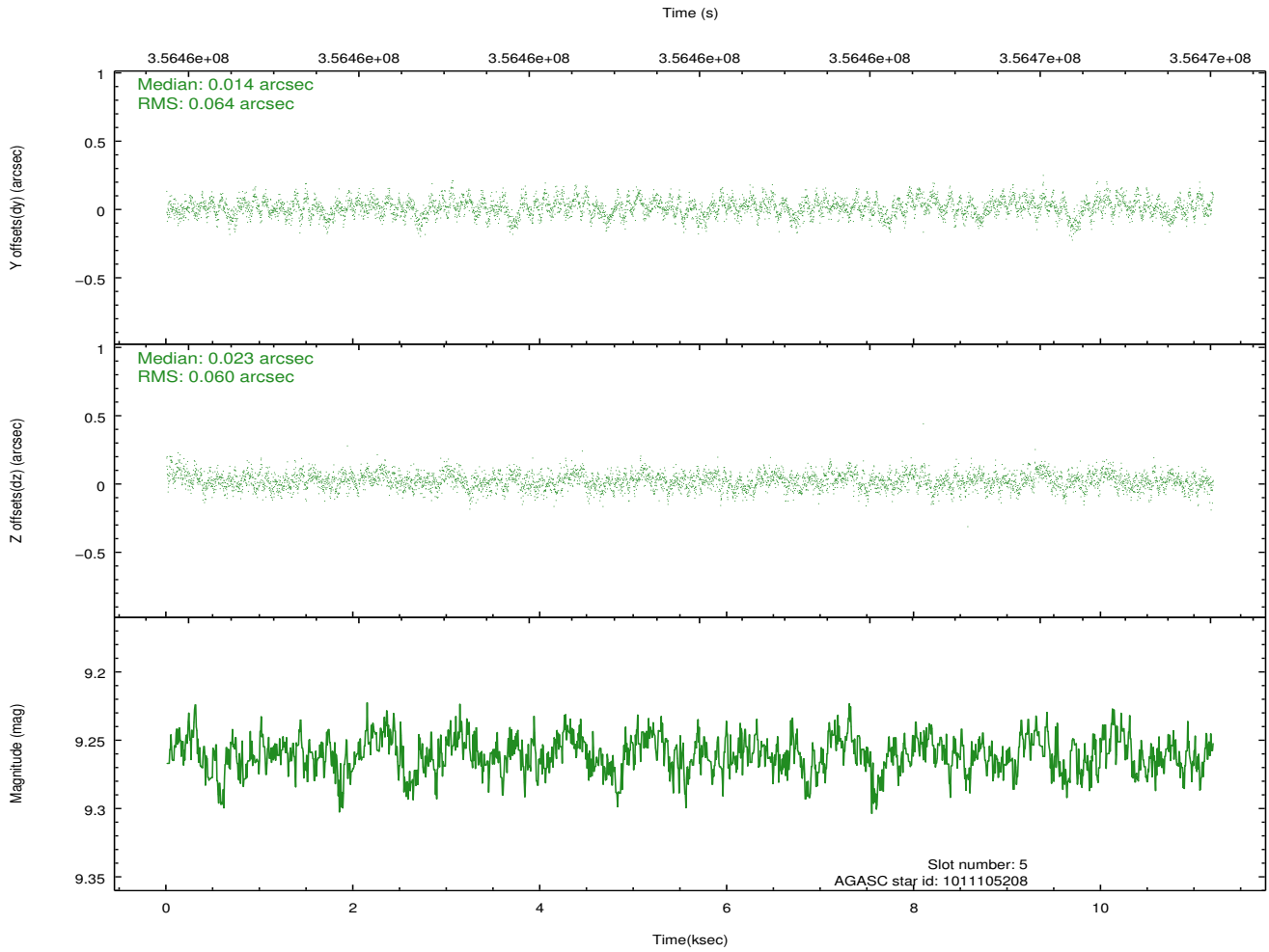
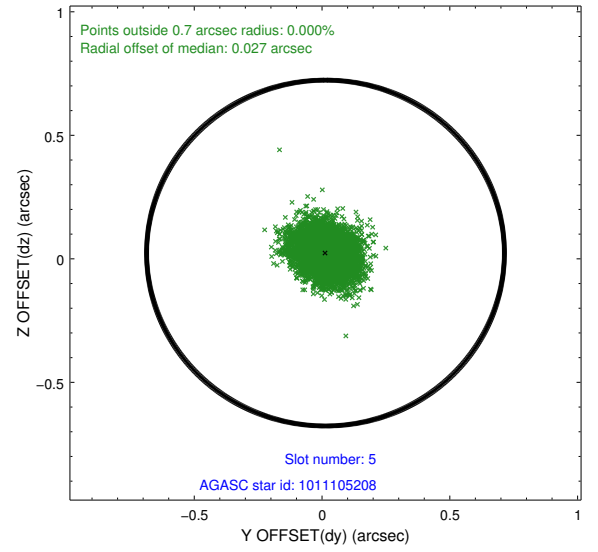
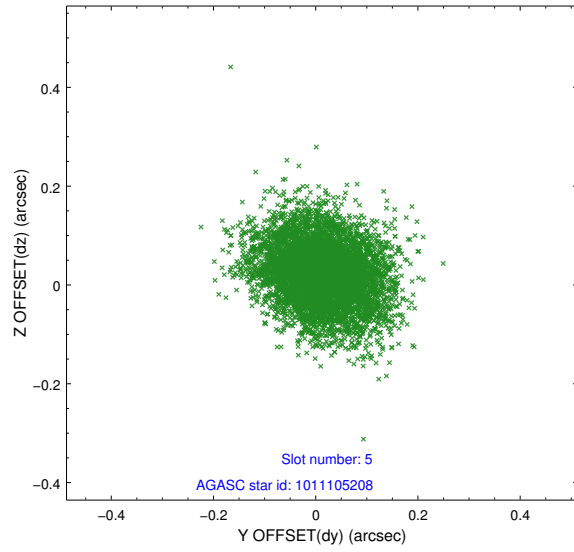
2.4.1 Slot 3



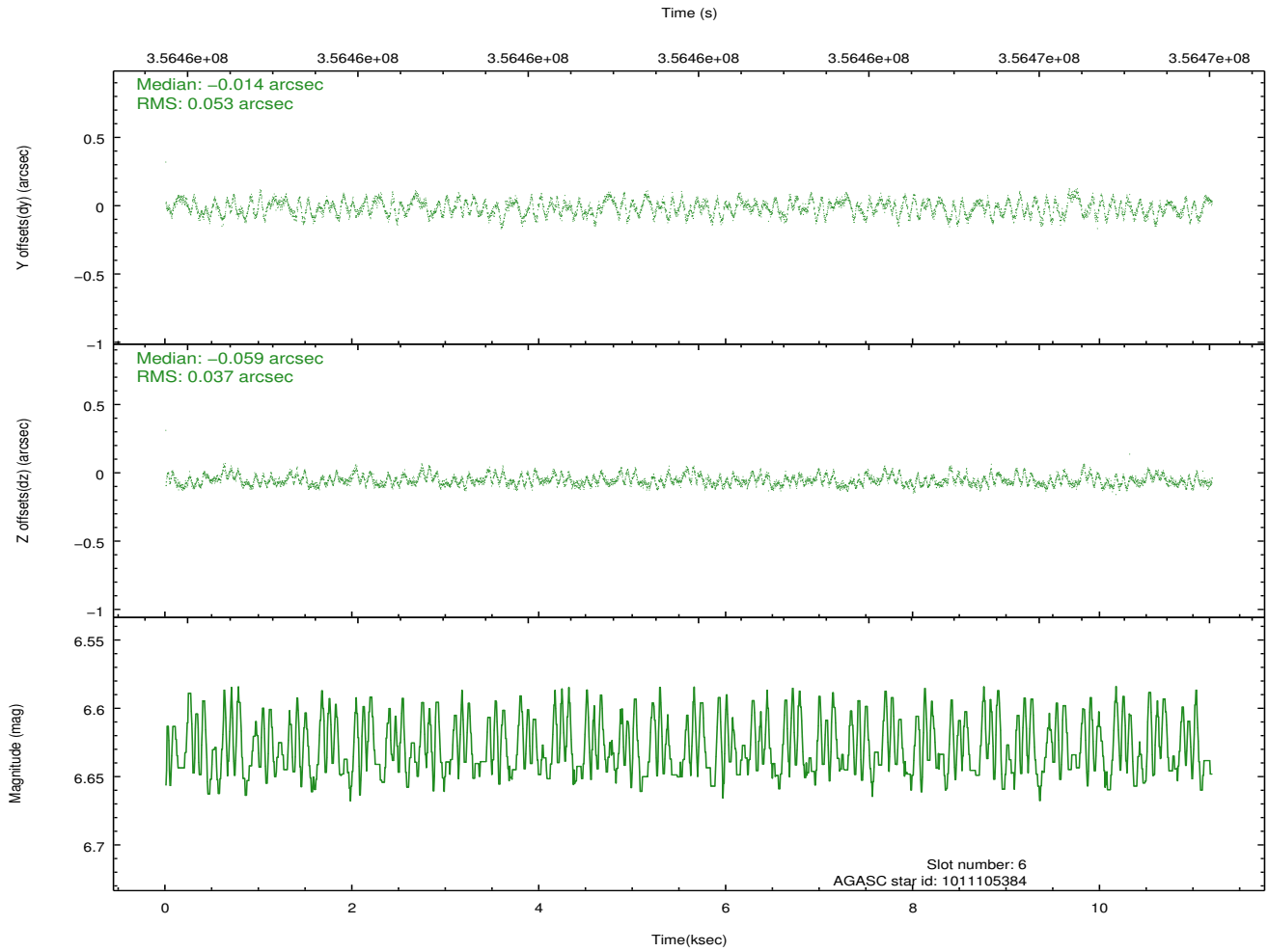
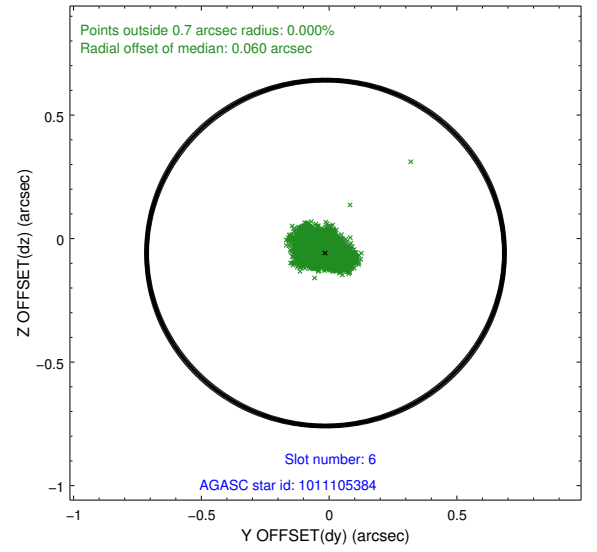
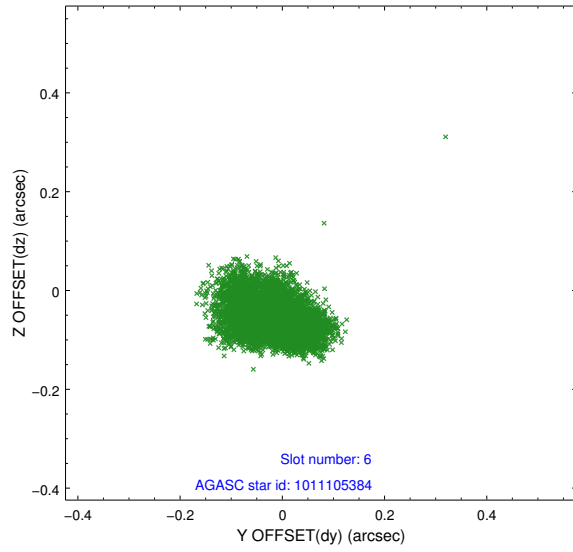
2.4.2 Slot 4



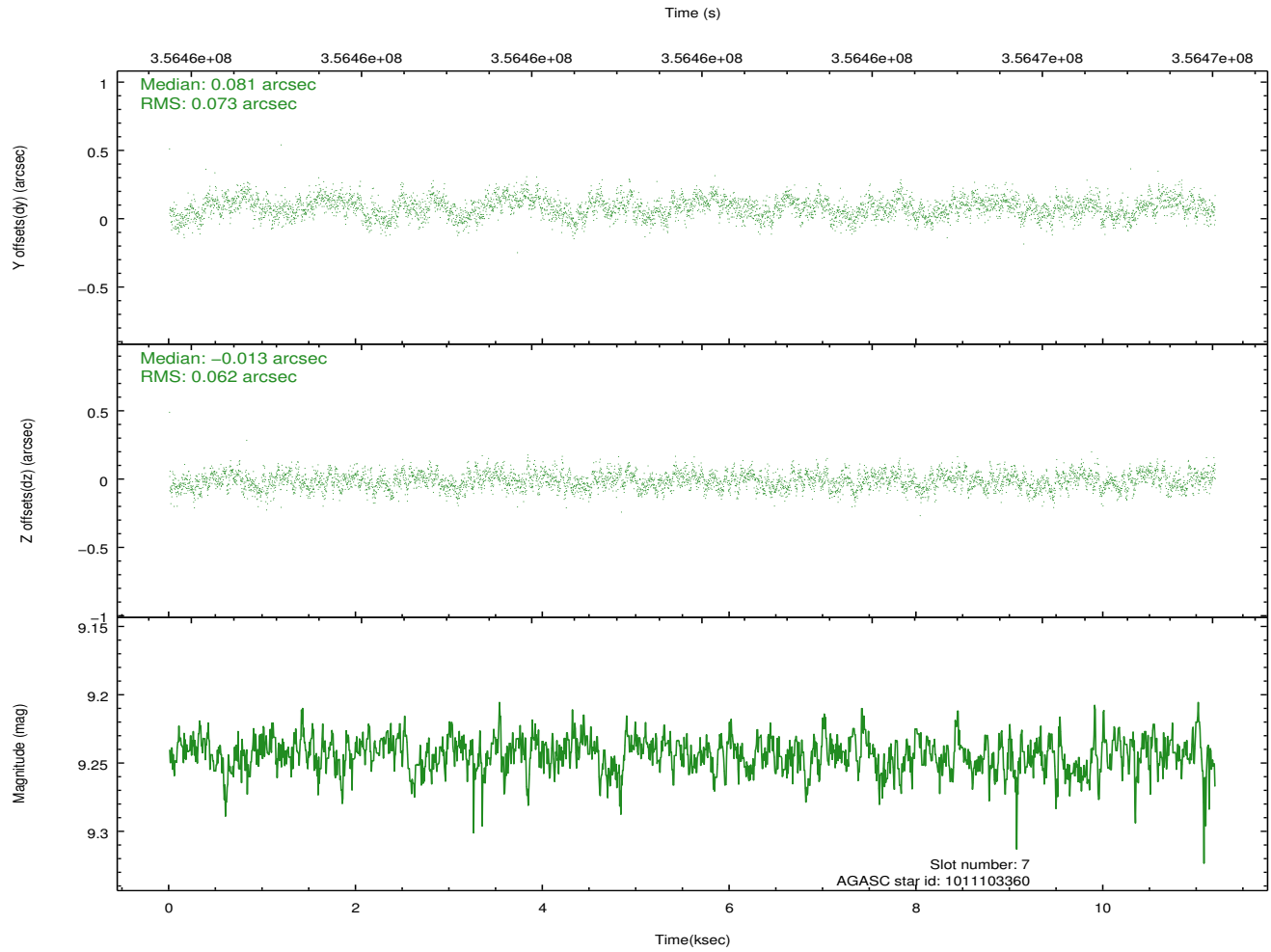
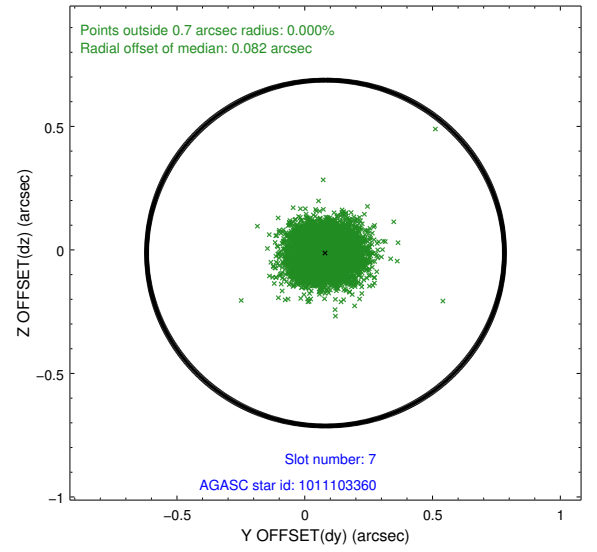
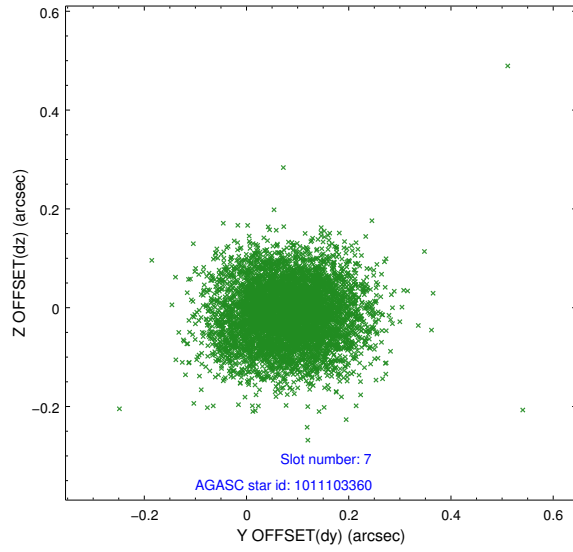
2.4.3 Slot 5



2.4.4 Slot 6

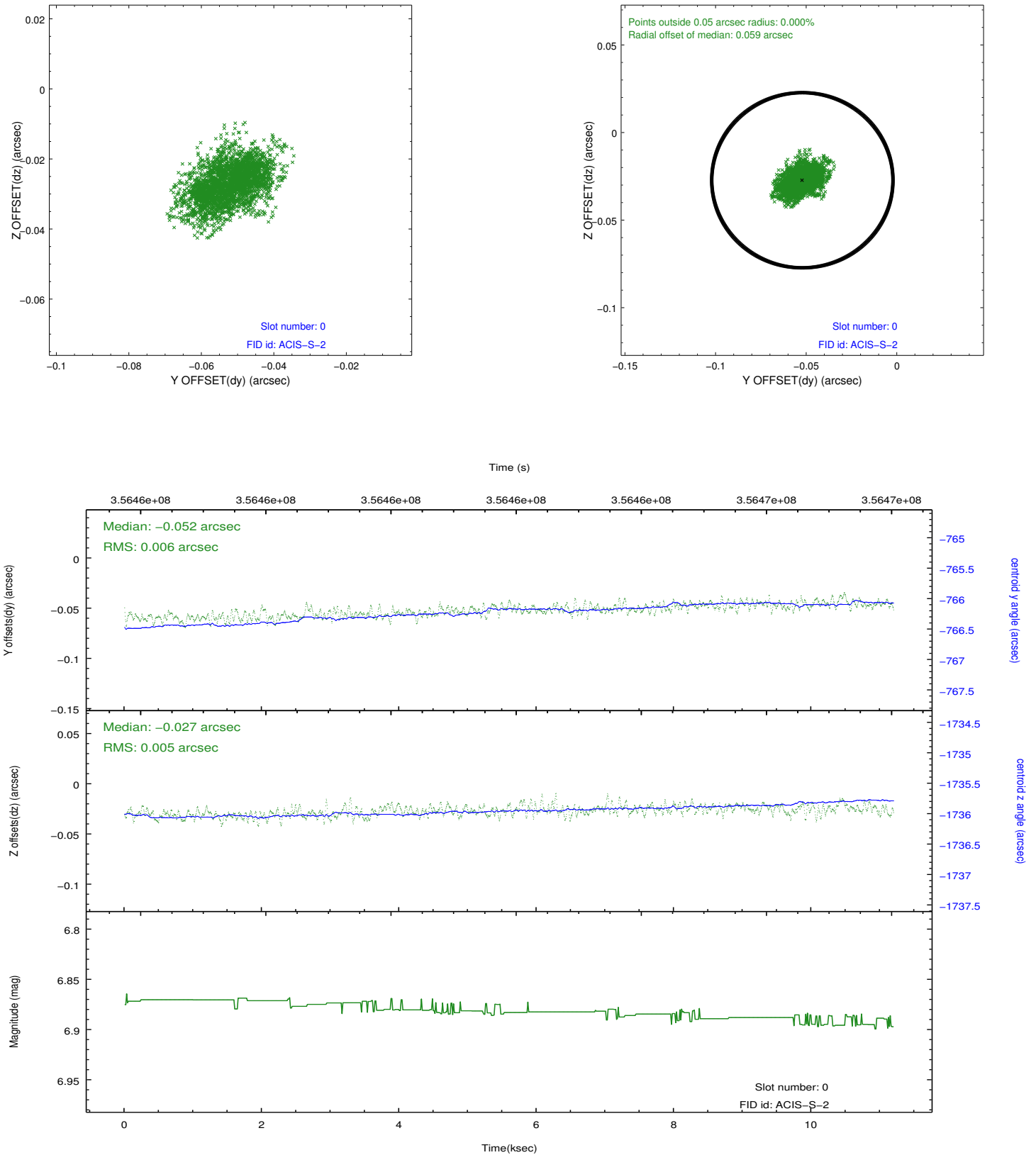


2.4.5 Slot 7

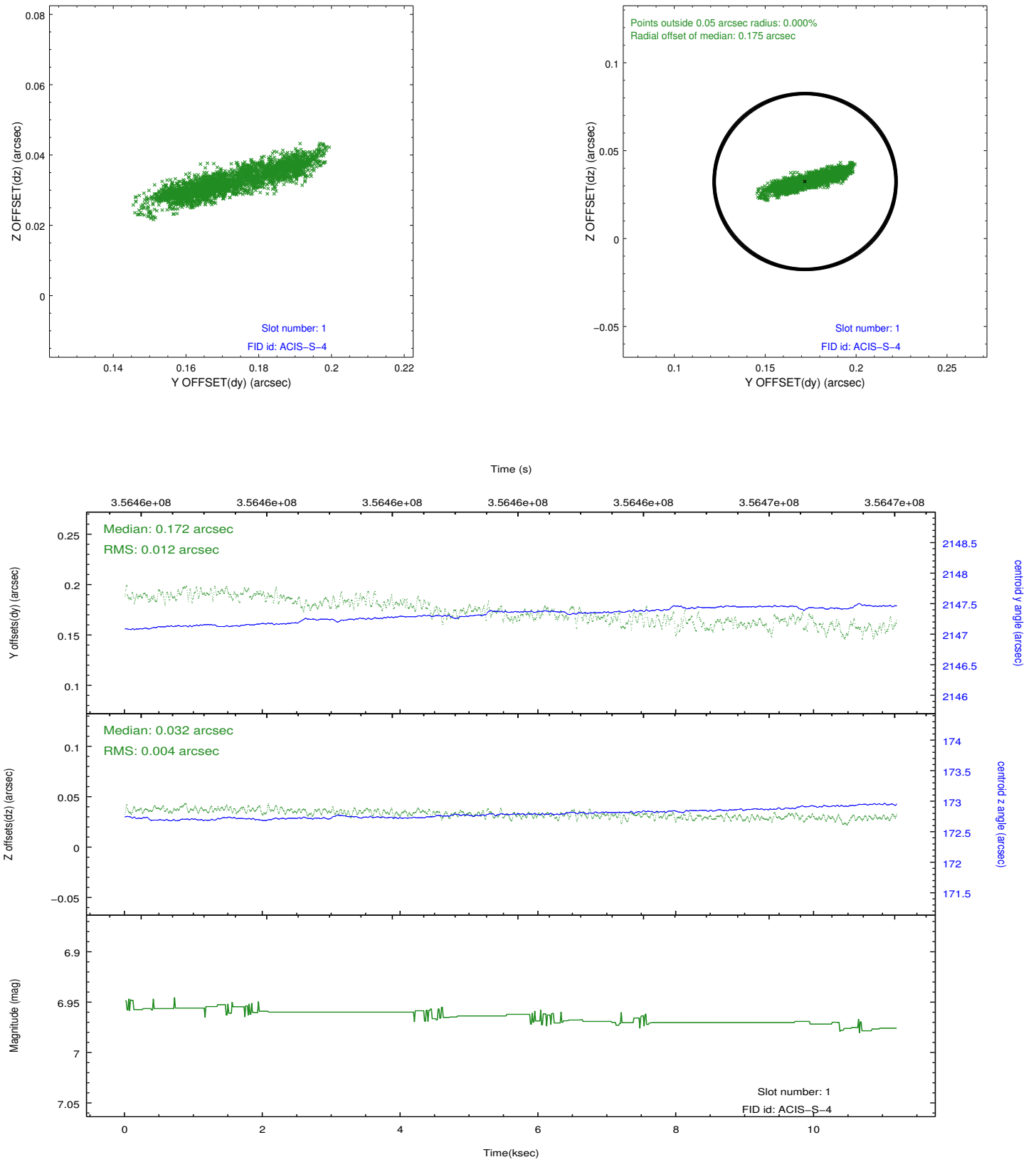


2.5 FID Slots

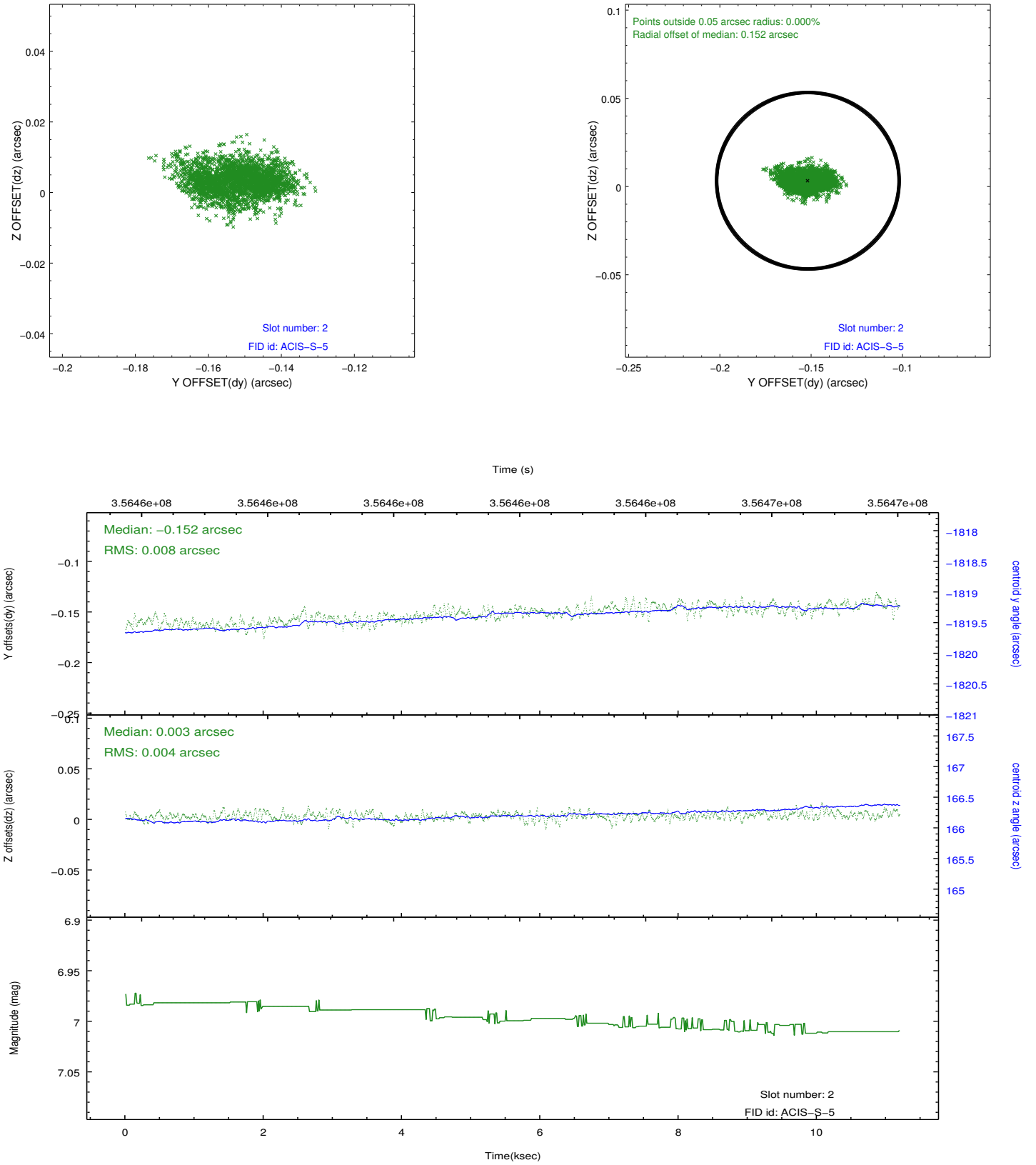
2.5.1 Slot 0



2.5.2 Slot 1



2.5.3 Slot 2



A Summary

A.1 Status

V&V Scientist	Beth Sundheim
V&V Date (YYYY-MM-DD)	2012.06.07
V&V Edition	1
V&V Disposition and Status	OK
V&V Charge Time	10.0415999

A.2 Comments